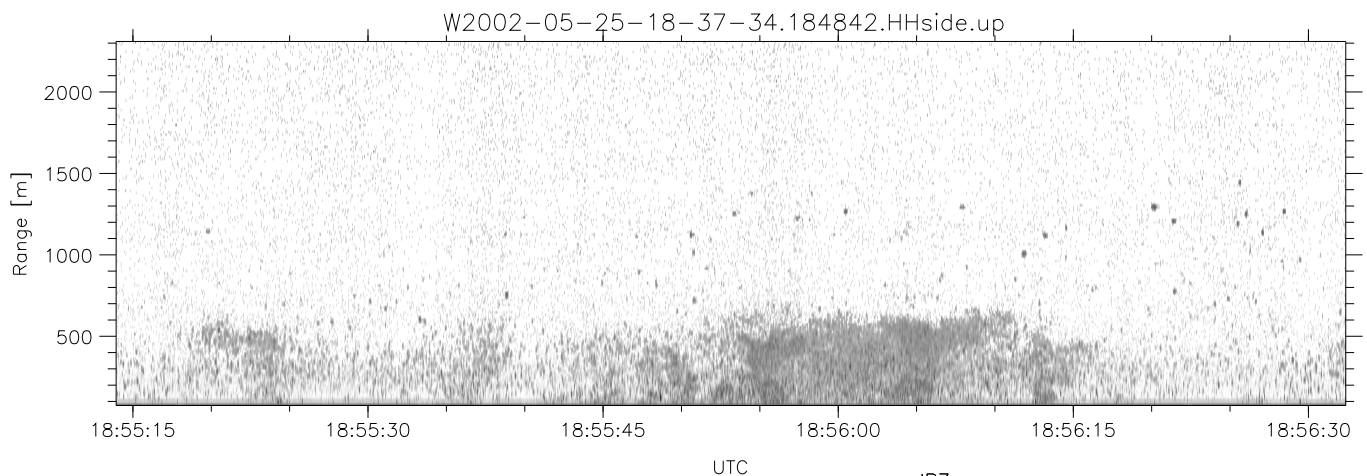
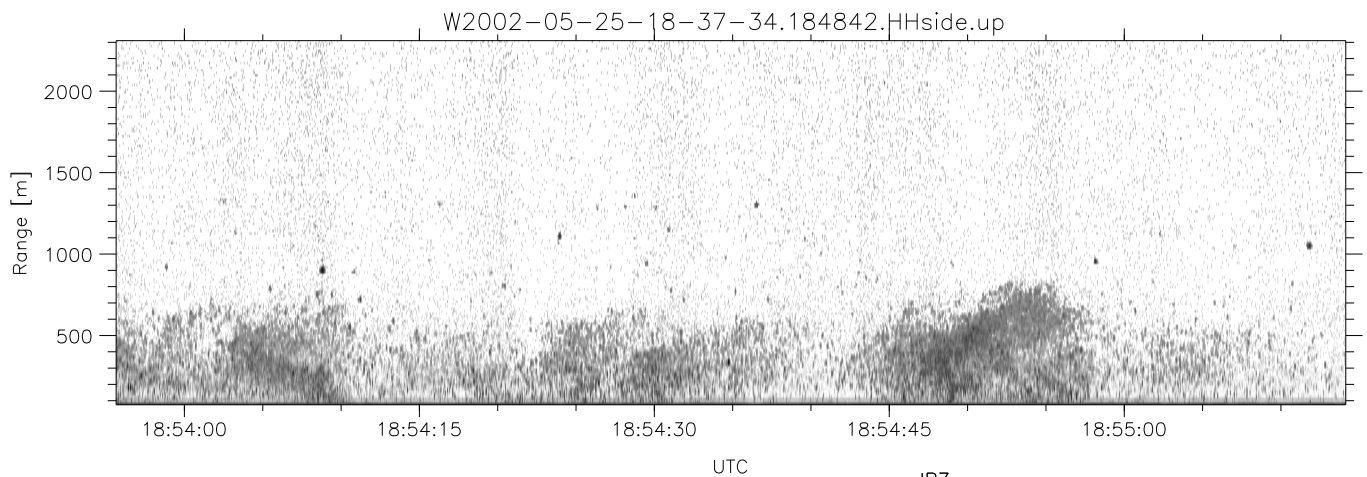
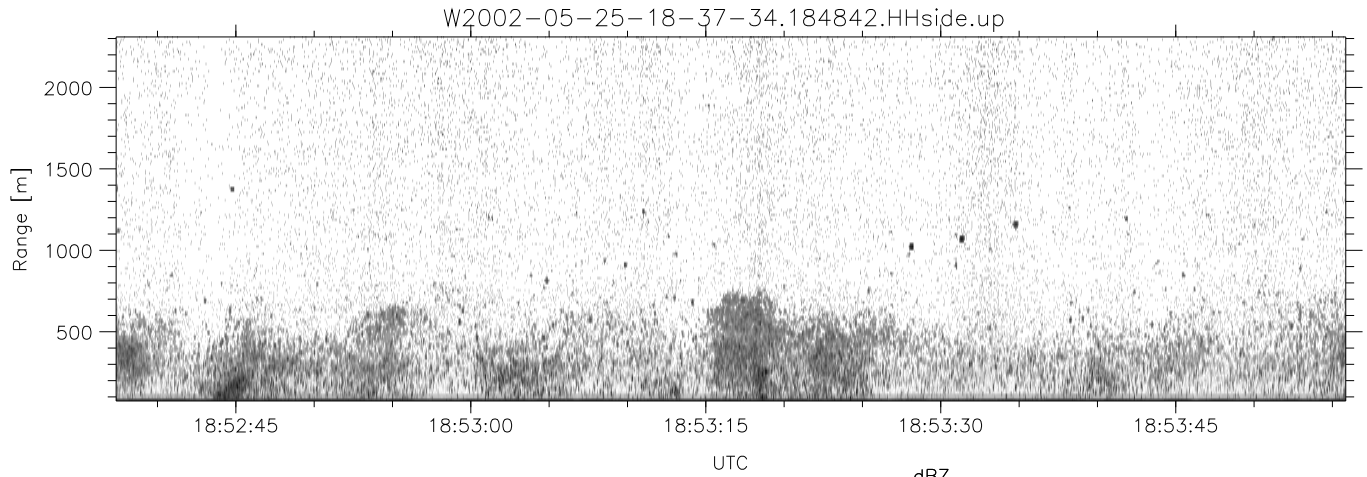


IHOP 2002 (dual-antenna config, modes 1,3,4,7) Data (cal: 49.0,50.0)

W2002-05-25-18-37-34 - SPPMAG  
 IRIG:1,UTC: 18:37:19.18 to 20:21:21.98, Dur: 6242s  
 TimeLngth: 6242.80s, TimeInt: 27ms (35.9pps)  
 TimeCor=-13.0s, DSPDif(mn,mx,min):25,20,288  
 PPS(min,max,std): 31,42,2.93  
 Prof: 1571 to 225383, NumProf(t/r): 223812/26357  
 ProcTime/Recs: 18:48:42-19:00:06/26357-52713  
 MxACQtime: 17ms; DRate: 85.8KB/s; Flags: 0, 0, 0  
 Pulse: 275ns, IFfilt: 5.0MHz; ppPol: HH  
 TxPol: H, PRF: 20 kHz  
 Range: Delay 75m, Spacing 15m, Gates 150  
 Ave. Pulses: 348, Rng/Prof Aspect@90m/s: 6.0

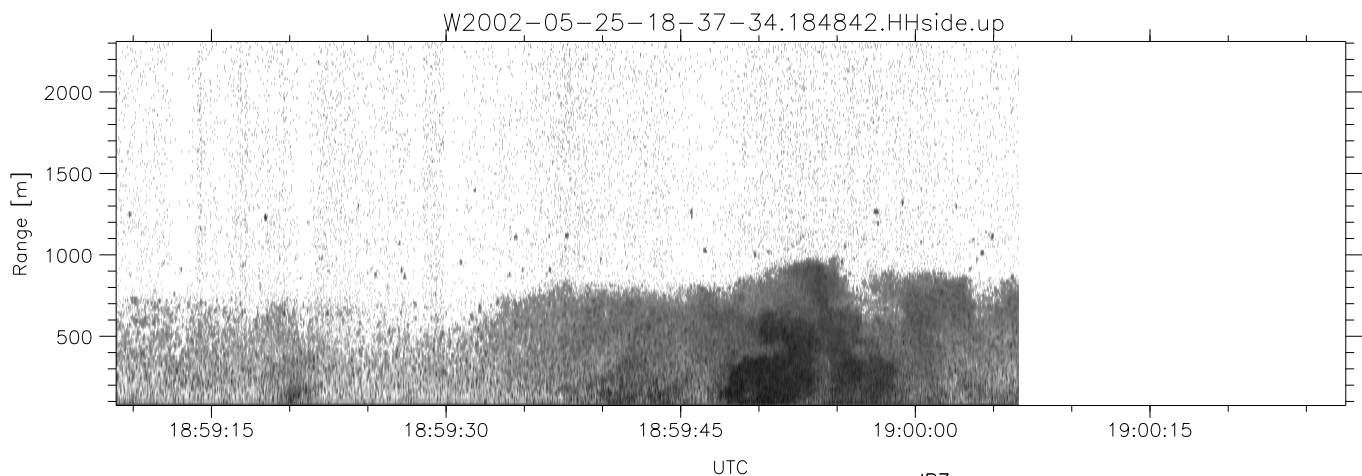
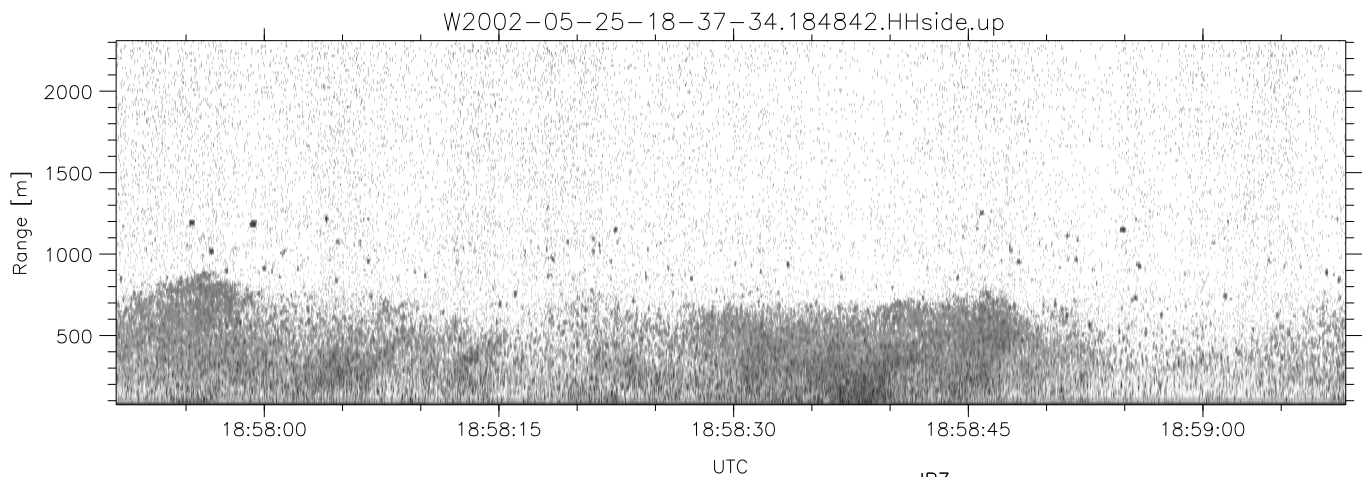
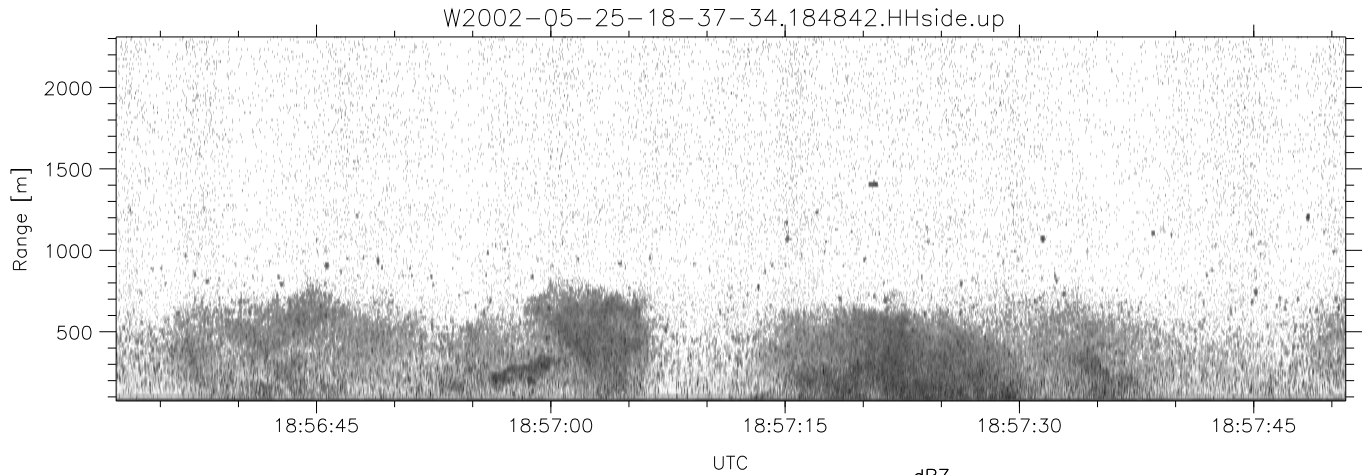
	Min	Max	Mean	Std	Varc%
hhN(dB)	-66.13	-64.31	-65.25	-78.25	5.0
vvN(dB)	-65.96	-64.15	-65.01	-78.05	5.0
hhL(dB)	-15.09	-7.40	-10.22	-16.63	22.8
vhL(dB)	-18.03	-8.50	-11.46	-17.44	25.2
ppN(m/s)	-15.80	15.80	0.11	9.10	
ppT(m/s)	-0.02	0.02	-0.00	0.01	
vh/hh(dB)	-NaN	-1.70	-18.58	-11.57	502.
hnjmp(dB)	-1.29	0.95	-0.10	-11.83	6.7
vnjmp(dB)	-1.22	0.99	-0.10	-11.83	6.7



IHOP 2002 (dual-antenna config, modes 1,3,4,7) Data (cal: 49.0,50.0)

W2002-05-25-18-37-34 - SPPMAG  
 IRIG:1,UTC: 18:37:19.18 to 20:21:21.98, Dur: 6242s  
 TimeLngth: 6242.80s, TimeInt: 27ms (35.9pps)  
 TimeCor=-13.0s, DSPDif(mn,mx,min):25,20,288  
 PPS(min,max,std): 31,42,2.93  
 Prof: 1571 to 225383, NumProf(t/r): 223812/26357  
 ProcTime/Recs: 18:48:42-19:00:06/26357-52713  
 MxACQtime: 17ms; DRate: 85.8KB/s; Flags: 0, 0, 0  
 Pulse: 275ns, IFfilt: 5.0MHz; ppPol: HH  
 TxPol: H, PRF: 20 kHz  
 Range: Delay 75m, Spacing 15m, Gates 150  
 Ave. Pulses: 348, Rng/Prof Aspect@90m/s: 6.0

	Min	Max	Mean	Std	Varc%
hhN(dB)	-66.13	-64.31	-65.25	-78.25	5.0
vvN(dB)	-65.96	-64.15	-65.01	-78.05	5.0
hhL(dB)	-15.09	-7.40	-10.22	-16.63	22.8
vhL(dB)	-18.03	-8.50	-11.46	-17.44	25.2
ppN(m/s)	-15.80	15.80	0.11	9.10	
ppT(m/s)	-0.02	0.02	-0.00	0.01	
vh/hh(dB)	-NaN	-1.70	-18.58	-11.57	502.
hnjmp(dB)	-1.29	0.95	-0.10	-11.83	6.7
vnjmp(dB)	-1.22	0.99	-0.10	-11.83	6.7



IHOP 2002 (dual-antenna config, modes 1,3,4,7) Data (cal: 49.0,50.0)

W2002-05-25-18-37-34 - SPPMAG  
 IRIG:1,UTC: 18:37:19.18 to 20:21:21.98, Dur: 6242s  
 TimeLngth: 6242.80s, TimeInt: 27ms (35.9pps)  
 TimeCor=-13.0s, DSPDif(mn,mx,min):25,20,288  
 PPS(min,max,std): 31,42,2.93  
 Prof: 1571 to 225383, NumProf(t/r): 223812/26357  
 ProcTime/Recs: 18:48:42-19:00:06/26357-52713  
 MxACQtime: 17ms; DRate: 85.8KB/s; Flags: 0, 0, 0  
 Pulse: 275ns, IFfilt: 5.0MHz; ppPol: HH  
 TxPol: H, PRF: 20 kHz  
 Range: Delay 75m, Spacing 15m, Gates 150  
 Ave. Pulses: 348, Rng/Prof Aspect@90m/s: 6.0

	Min	Max	Mean	Std	Varc%
hhN(dB)	-66.13	-64.31	-65.25	-78.25	5.0
vvN(dB)	-65.96	-64.15	-65.01	-78.05	5.0
hhL(dB)	-15.09	-7.40	-10.22	-16.63	22.8
vhL(dB)	-18.03	-8.50	-11.46	-17.44	25.2
ppN(m/s)	-15.80	15.80	0.11	9.10	
ppT(m/s)	-0.02	0.02	-0.00	0.01	
vh/hh(dB)	-NaN	-1.70	-18.58	-11.57	502.
hnjmp(dB)	-1.29	0.95	-0.10	-11.83	6.7
vnjmp(dB)	-1.22	0.99	-0.10	-11.83	6.7