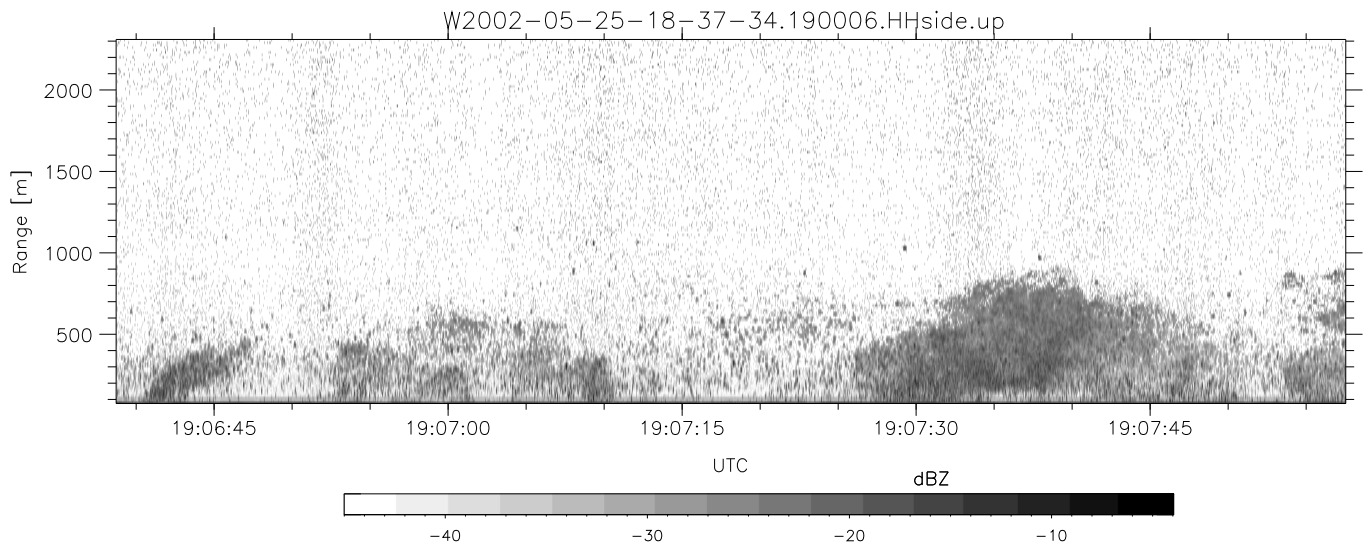
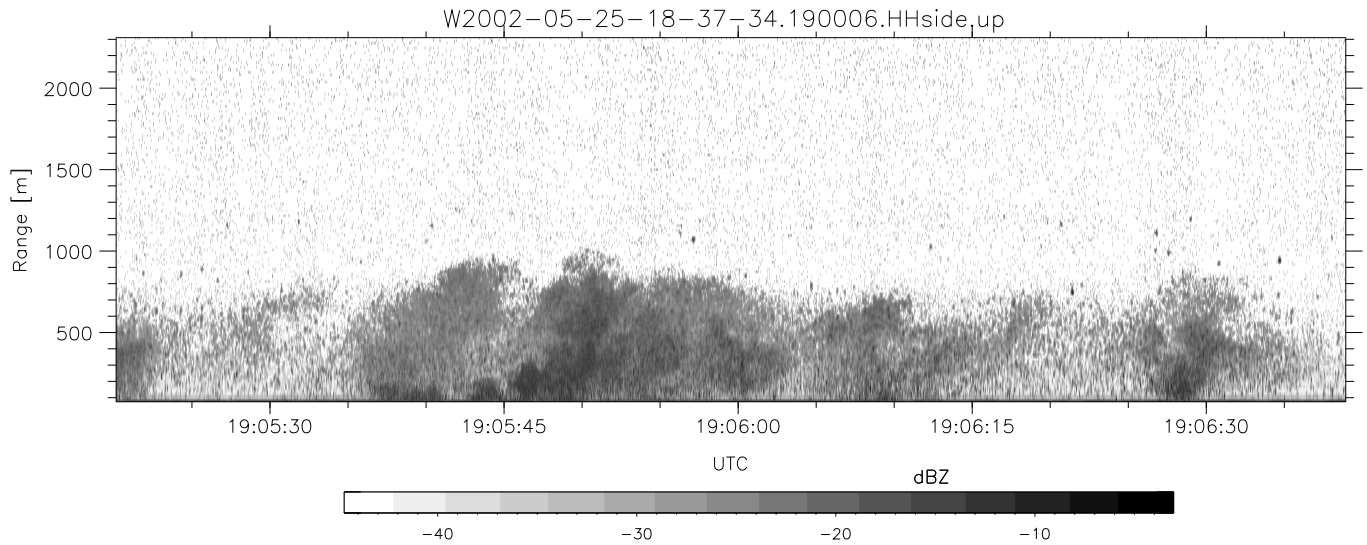
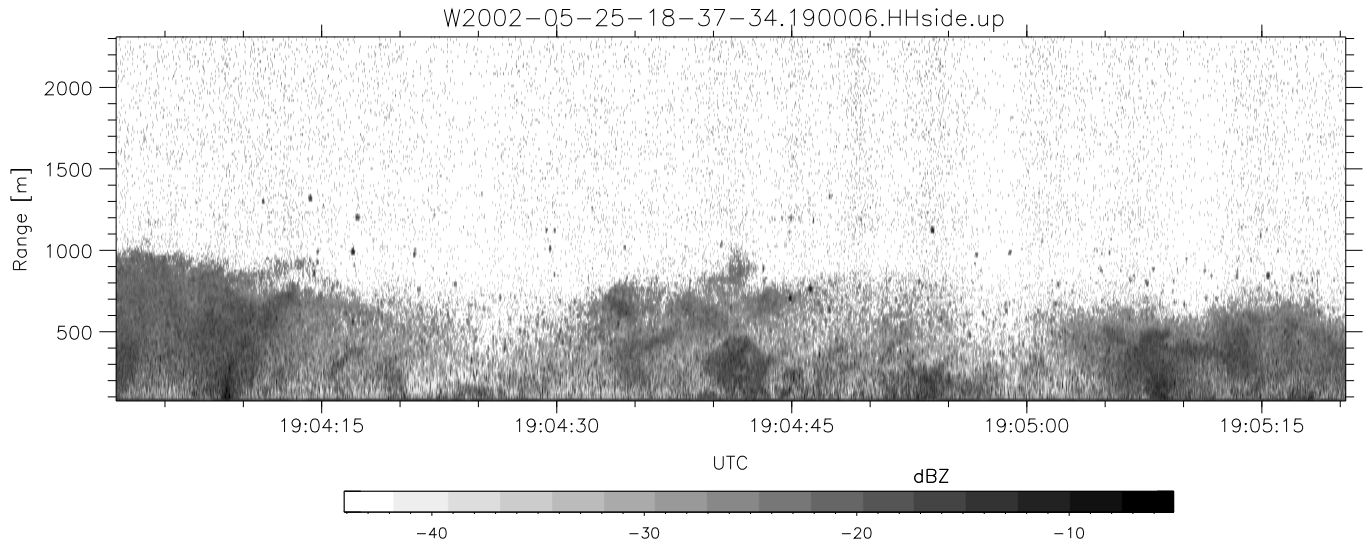


IHOP 2002 (dual-antenna config, modes 1,3,4,7) Data (cal: 49.0,50.0)

W2002-05-25-18-37-34 - SPPMAG
 IRIG:1,UTC: 18:37:19.18 to 20:21:21.98, Dur: 6242s
 TimeLngth: 6242.80s, TimeInt: 27ms (35.9pps)
 TimeCor=-13.0s, DSPDif(mn,mx,min):29,20,459
 PPS(min,max,std): 18,42,7.47
 Prof: 1571 to 225383, NumProf(t/r): 223812/26357
 ProcTime/Recs: 19:00:06-19:13:23/52714-79070
 MxACQtime: 17ms; DRate: 85.8KB/s; Flags: 0, 0, 0
 Pulse: 275ns, IFfilt: 5.0MHz; ppPol: HH
 TxPol: H, PRF: 20 kHz
 Range: Delay 75m, Spacing 15m, Gates 150
 Ave. Pulses: 348, Rng/Prof Aspect@90m/s: 6.0

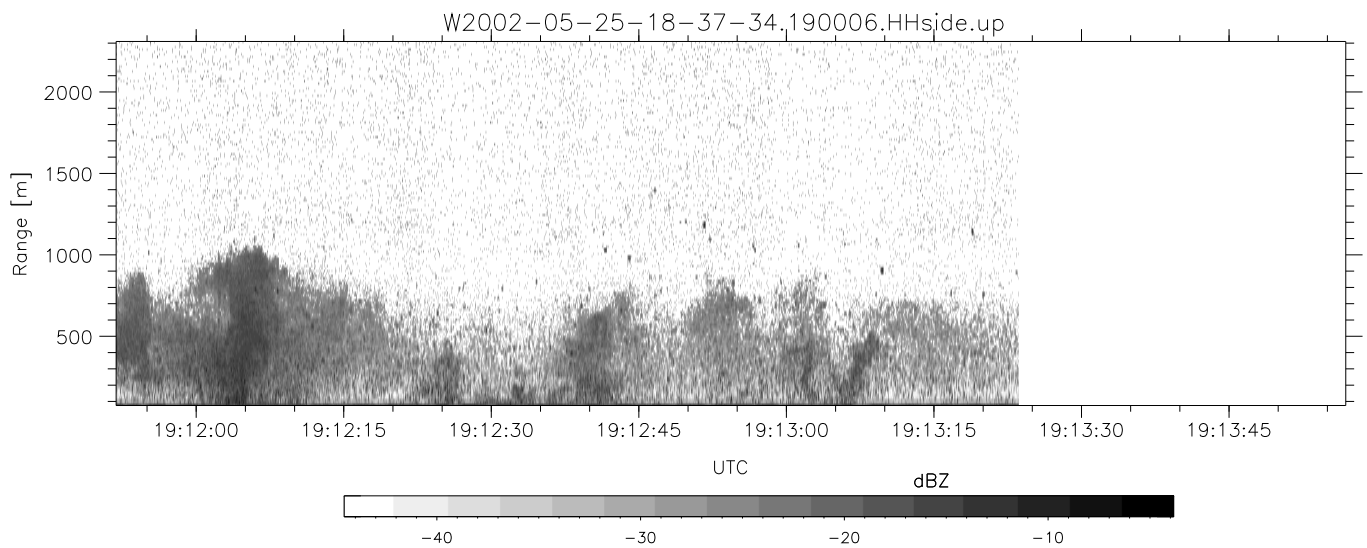
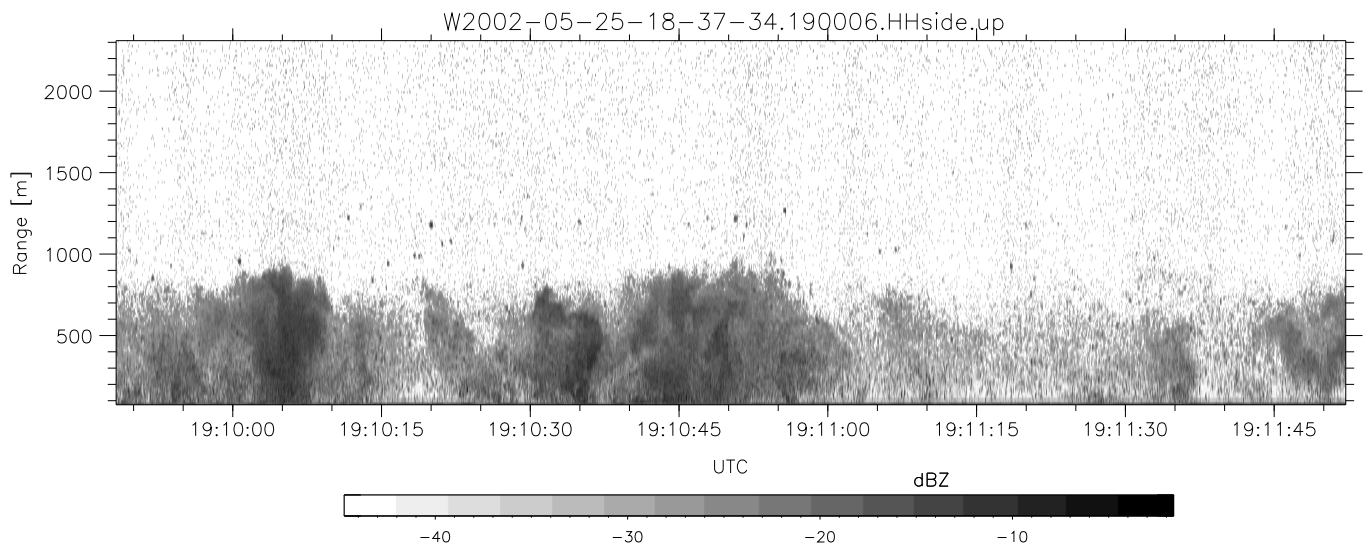
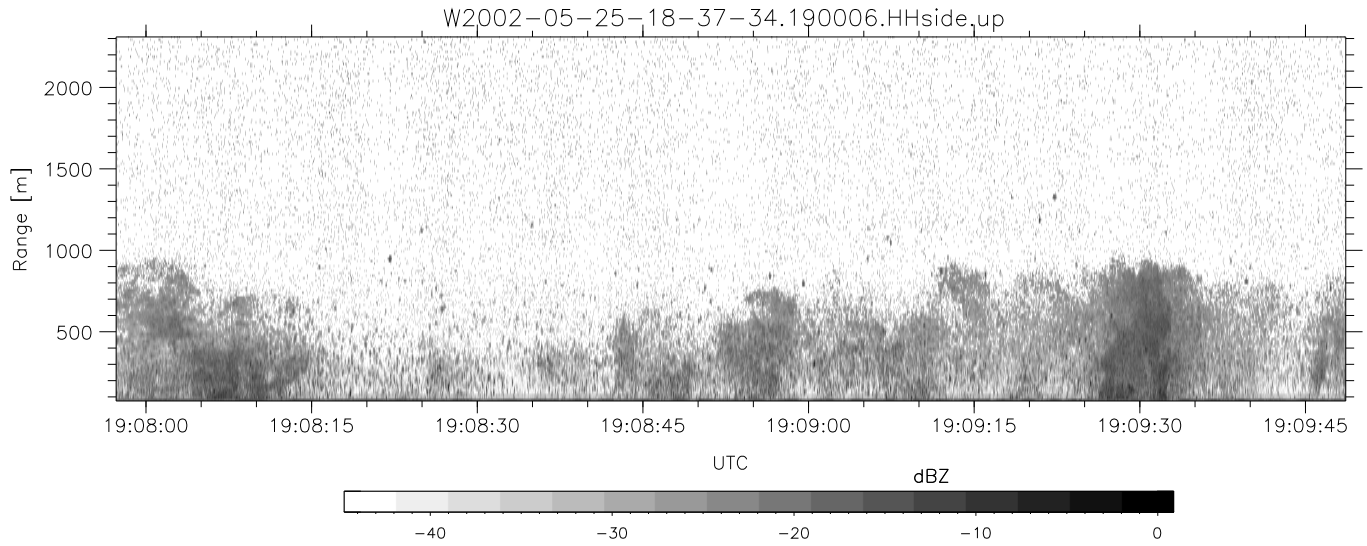
	Min	Max	Mean	Std	Varc%
hhN(dB)	-66.14	-64.49	-65.29	-78.32	5.0
vvN(dB)	-65.87	-64.19	-65.03	-78.07	5.0
hhL(dB)	-19.04	-6.26	-10.17	-15.00	32.9
vhL(dB)	-28.96	-7.92	-11.41	-15.91	35.5
ppN(m/s)	-15.80	15.80	0.01	9.11	
ppT(m/s)	-0.03	0.02	-0.00	0.01	
vh/hh(dB)	-NaN	1.02	-16.65	-10.09	452.
hnjmp(dB)	-0.99	1.23	0.12	-11.56	6.8
vnjmp(dB)	-1.12	1.37	0.12	-11.60	6.7



IHOP 2002 (dual-antenna config, modes 1,3,4,7) Data (cal: 49.0,50.0)

W2002-05-25-18-37-34 - SPPMAG
 IRIG:1,UTC: 18:37:19.18 to 20:21:21.98, Dur: 6242s
 TimeLngth: 6242.80s, TimeInt: 27ms (35.9pps)
 TimeCor=-13.0s, DSPDif(mn,mx,min):29,20,459
 PPS(min,max,std): 18,42,7.47
 Prof: 1571 to 225383, NumProf(t/r): 223812/26357
 ProcTime/Recs: 19:00:06-19:13:23/52714-79070
 MxACQtime: 17ms; DRate: 85.8KB/s; Flags: 0, 0, 0
 Pulse: 275ns, IFfilt: 5.0MHz; ppPol: HH
 TxPol: H, PRF: 20 kHz
 Range: Delay 75m, Spacing 15m, Gates 150
 Ave. Pulses: 348, Rng/Prof Aspect@90m/s: 6.0

	Min	Max	Mean	Std	Varc%
hhN(dB)	-66.14	-64.49	-65.29	-78.32	5.0
vvN(dB)	-65.87	-64.19	-65.03	-78.07	5.0
hhL(dB)	-19.04	-6.26	-10.17	-15.00	32.9
vhL(dB)	-28.96	-7.92	-11.41	-15.91	35.5
ppN(m/s)	-15.80	15.80	0.01	9.11	
ppT(m/s)	-0.03	0.02	-0.00	0.01	
vh/hh(dB)	-NaN	1.02	-16.65	-10.09	452.
hn_jmp(dB)	-0.99	1.23	0.12	-11.56	6.8
vn_jmp(dB)	-1.12	1.37	0.12	-11.60	6.7



IHOP 2002 (dual-antenna config, modes 1,3,4,7) Data (cal: 49.0,50.0)

W2002-05-25-18-37-34 - SPPMAG
 IRIG:1,UTC: 18:37:19.18 to 20:21:21.98, Dur: 6242s
 TimeLngth: 6242.80s, TimeInt: 27ms (35.9pps)
 TimeCor=-13.0s, DSPDif(mn,mx,min):29,20,459
 PPS(min,max,std): 18,42,7.47
 Prof: 1571 to 225383, NumProf(t/r): 223812/26357
 ProcTime/Recs: 19:00:06-19:13:23/52714-79070
 MxACQtime: 17ms; DRate: 85.8KB/s; Flags: 0, 0, 0
 Pulse: 275ns, IFfilt: 5.0MHz; ppPol: HH
 TxPol: H, PRF: 20 kHz
 Range: Delay 75m, Spacing 15m, Gates 150
 Ave. Pulses: 348, Rng/Prof Aspect@90m/s: 6.0

	Min	Max	Mean	Std	Varc%
hhN(dB)	-66.14	-64.49	-65.29	-78.32	5.0
vvN(dB)	-65.87	-64.19	-65.03	-78.07	5.0
hhL(dB)	-19.04	-6.26	-10.17	-15.00	32.9
vhL(dB)	-28.96	-7.92	-11.41	-15.91	35.5
ppN(m/s)	-15.80	15.80	0.01	9.11	
ppT(m/s)	-0.03	0.02	-0.00	0.01	
vh/hh(dB)	-NaN	1.02	-16.65	-10.09	452.
hnjmp(dB)	-0.99	1.23	0.12	-11.56	6.8
vnjmp(dB)	-1.12	1.37	0.12	-11.60	6.7