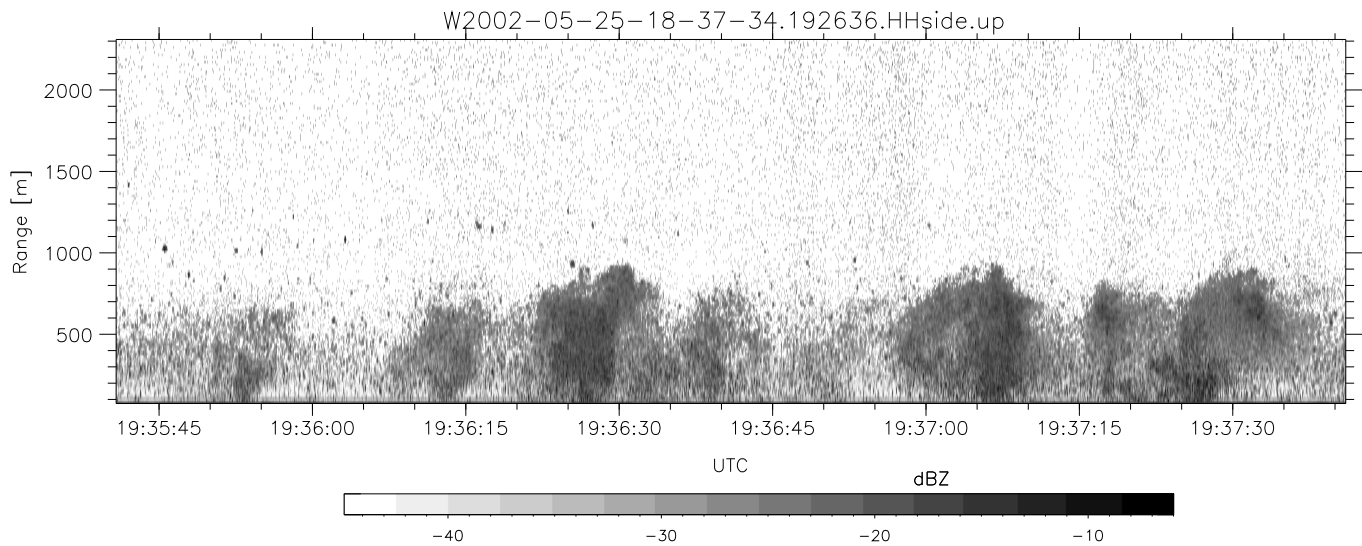
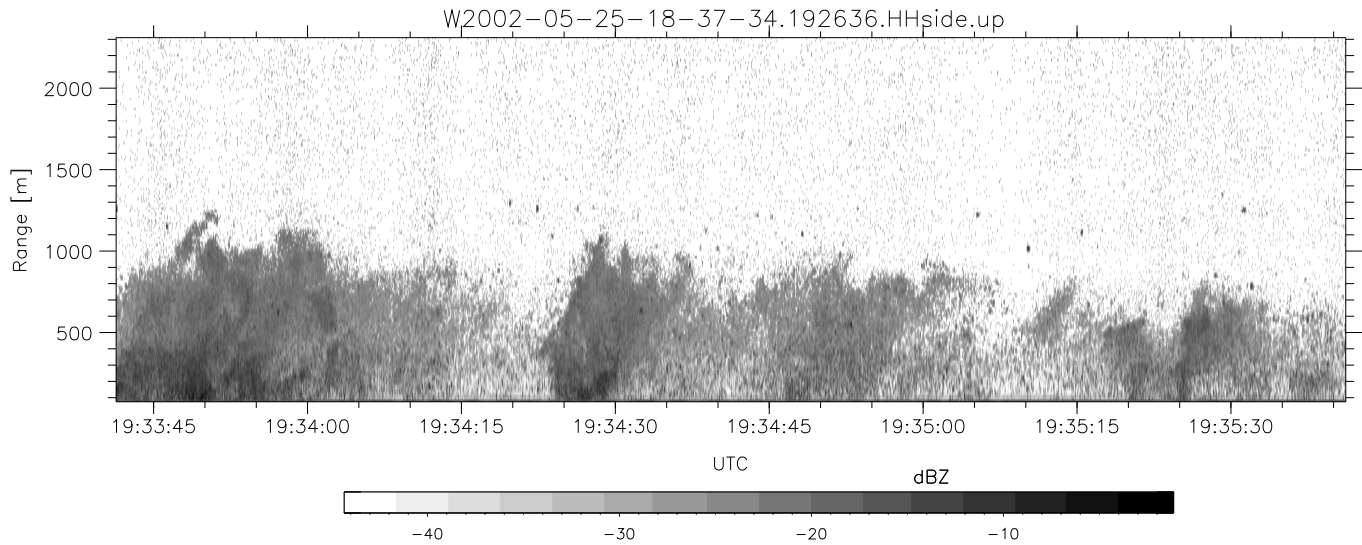
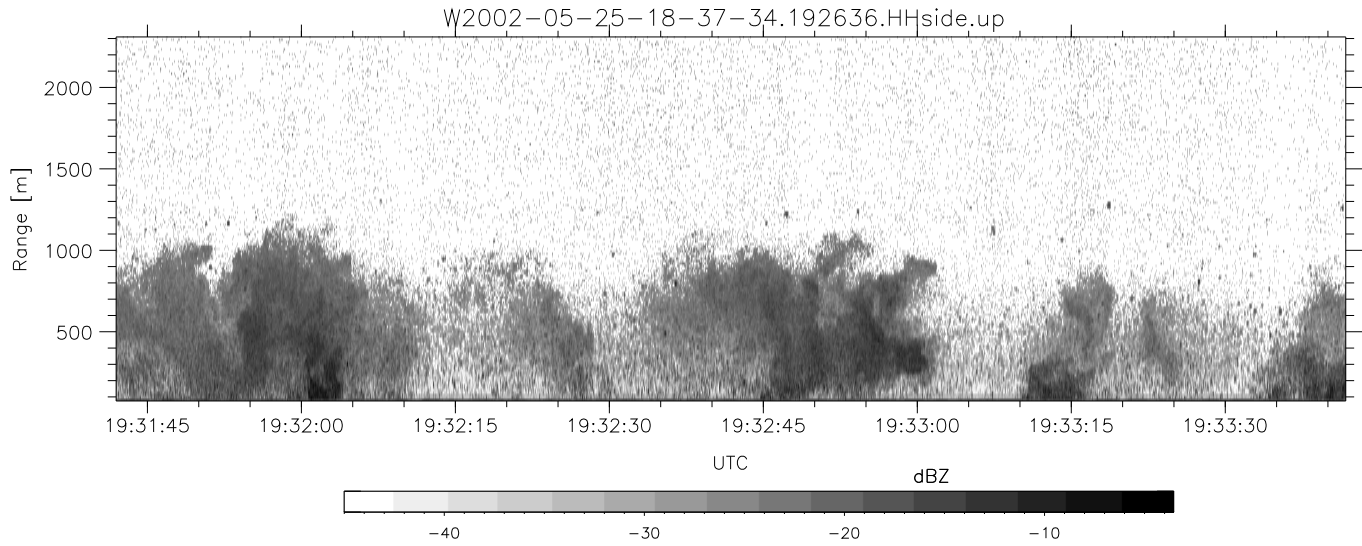


IHOP 2002 (dual-antenna config, modes 1,3,4,7) Data (cal: 49.0,50.0)

W2002-05-25-18-37-34 - SPPMAG
 IRIG:1,UTC: 18:37:19.18 to 20:21:21.98, Dur: 6242s
 TimeLngth: 6242.80s, TimeInt: 27ms (35.9pps)
 TimeCor=-13.0s, DSPDif(mn,mx,min):32,20,396
 PPS(min,max,std): 15,42,6.85
 Prof: 1571 to 225383, NumProf(t/r): 223812/26357
 ProcTime/Recs: 19:26:36-19:41:25/105428-131784
 MxACQtime: 17ms; DRate: 85.8KB/s; Flags: 0, 0, 0
 Pulse: 275ns, IFfilt: 5.0MHz; ppPol: HH
 TxPol: H, PRF: 20 kHz
 Range: Delay 75m, Spacing 15m, Gates 150
 Ave. Pulses: 348, Rng/Prof Aspect@90m/s: 6.0

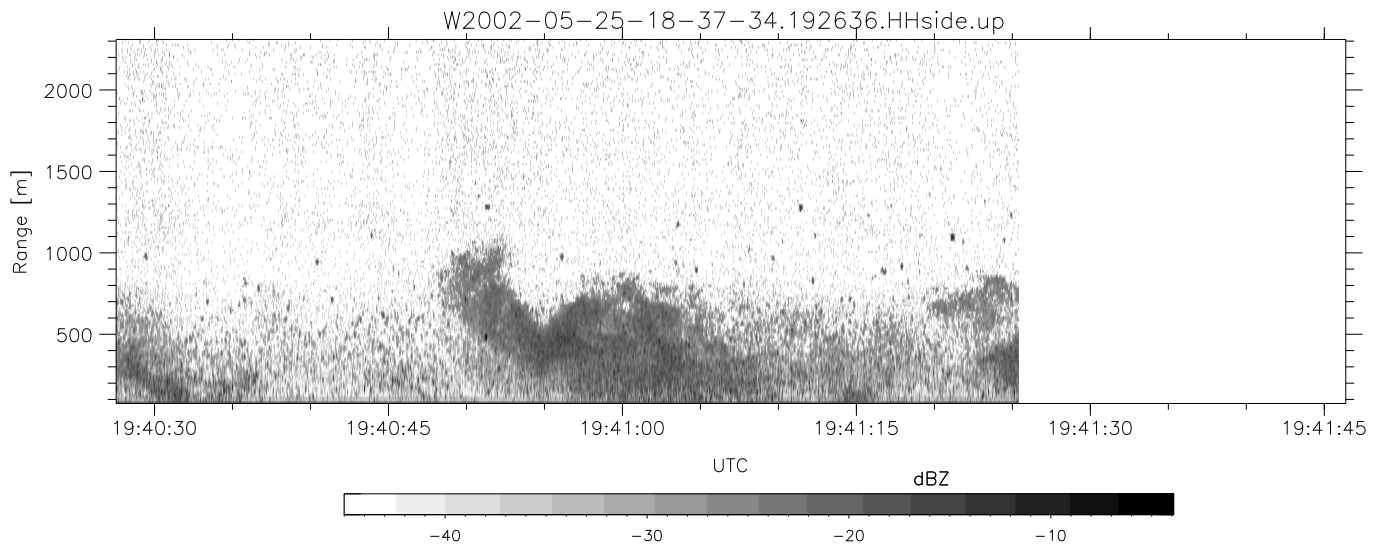
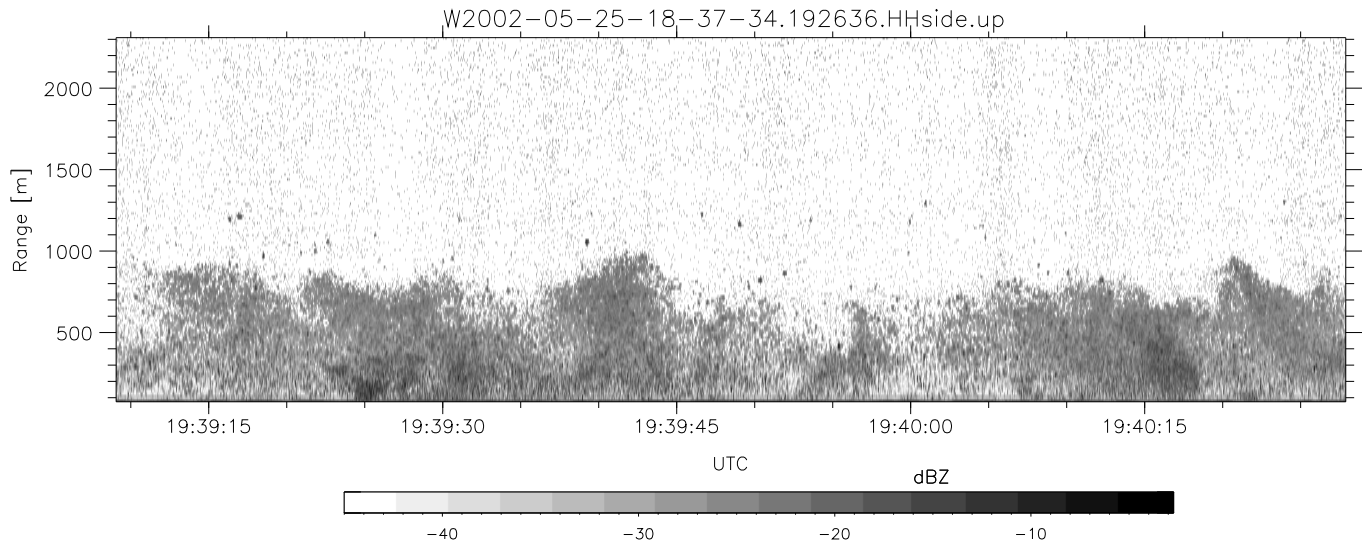
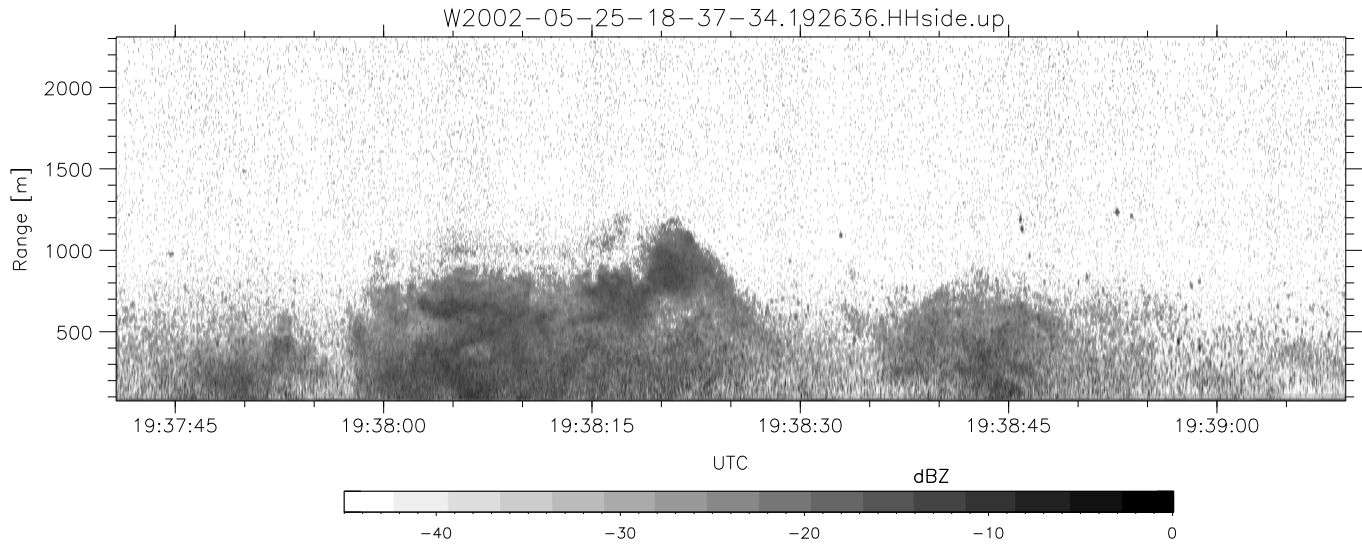
	Min	Max	Mean	Std	Varc%
hhN(dB)	-66.32	-64.52	-65.43	-78.46	5.0
vvN(dB)	-66.08	-64.28	-65.18	-78.16	5.0
hhL(dB)	-19.31	-6.87	-11.39	-15.54	38.4
vhL(dB)	-21.91	-8.53	-12.37	-16.96	34.8
ppN(m/s)	-15.80	15.80	0.05	9.12	
ppT(m/s)	-0.03	0.03	-0.00	0.01	
vh/hh(dB)	-NaN	-1.15	-16.55	-10.74	380.
hnjmp(dB)	-1.14	1.18	0.12	-11.56	6.8
vnjmp(dB)	-1.07	1.36	0.12	-11.53	6.8



IHOP 2002 (dual-antenna config, modes 1,3,4,7) Data (cal: 49.0,50.0)

W2002-05-25-18-37-34 - SPPMAG
 IRIG:1,UTC: 18:37:19.18 to 20:21:21.98, Dur: 6242s
 TimeLngth: 6242.80s, TimeInt: 27ms (35.9pps)
 TimeCor=-13.0s, DSPDif(mn,mx,min):32,20,396
 PPS(min,max,std): 15,42,6.85
 Prof: 1571 to 225383, NumProf(t/r): 223812/26357
 ProcTime/Recs: 19:26:36-19:41:25/105428-131784
 MxACQtime: 17ms; DRate: 85.8KB/s; Flags: 0, 0, 0
 Pulse: 275ns, IFfilt: 5.0MHz; ppPol: HH
 TxPol: H, PRF: 20 kHz
 Range: Delay 75m, Spacing 15m, Gates 150
 Ave. Pulses: 348, Rng/Prof Aspect@90m/s: 6.0

	Min	Max	Mean	Std	Varc%
hhN(dB)	-66.32	-64.52	-65.43	-78.46	5.0
vvN(dB)	-66.08	-64.28	-65.18	-78.16	5.0
hhL(dB)	-19.31	-6.87	-11.39	-15.54	38.4
vhL(dB)	-21.91	-8.53	-12.37	-16.96	34.8
ppN(m/s)	-15.80	15.80	0.05	9.12	
ppT(m/s)	-0.03	0.03	-0.00	0.01	
vh/hh(dB)	-NaN	-1.15	-16.55	-10.74	380.
hnjmp(dB)	-1.14	1.18	0.12	-11.56	6.8
vnjmp(dB)	-1.07	1.36	0.12	-11.53	6.8



IHOP 2002 (dual-antenna config, modes 1,3,4,7) Data (cal: 49.0,50.0)

W2002-05-25-18-37-34 - SPPMAG
 IRIG:1,UTC: 18:37:19.18 to 20:21:21.98, Dur: 6242s
 TimeLngth: 6242.80s, TimeInt: 27ms (35.9pps)
 TimeCor=-13.0s, DSPDif(mn,mx,min):32,20,396
 PPS(min,max,std): 15,42,6.85
 Prof: 1571 to 225383, NumProf(t/r): 223812/26357
 ProcTime/Recs: 19:26:36-19:41:25/105428-131784
 MxACQtime: 17ms; DRate: 85.8KB/s; Flags: 0, 0, 0
 Pulse: 275ns, IFfilt: 5.0MHz; ppPol: HH
 TxPol: H, PRF: 20 kHz
 Range: Delay 75m, Spacing 15m, Gates 150
 Ave. Pulses: 348, Rng/Prof Aspect@90m/s: 6.0

	Min	Max	Mean	Std	Varc%
hhN(dB)	-66.32	-64.52	-65.43	-78.46	5.0
vvN(dB)	-66.08	-64.28	-65.18	-78.16	5.0
hhL(dB)	-19.31	-6.87	-11.39	-15.54	38.4
vhL(dB)	-21.91	-8.53	-12.37	-16.96	34.8
ppN(m/s)	-15.80	15.80	0.05	9.12	
ppT(m/s)	-0.03	0.03	-0.00	0.01	
vh/hh(dB)	-NaN	-1.15	-16.55	-10.74	380.
hn_jmp(dB)	-1.14	1.18	0.12	-11.56	6.8
vn_jmp(dB)	-1.07	1.36	0.12	-11.53	6.8