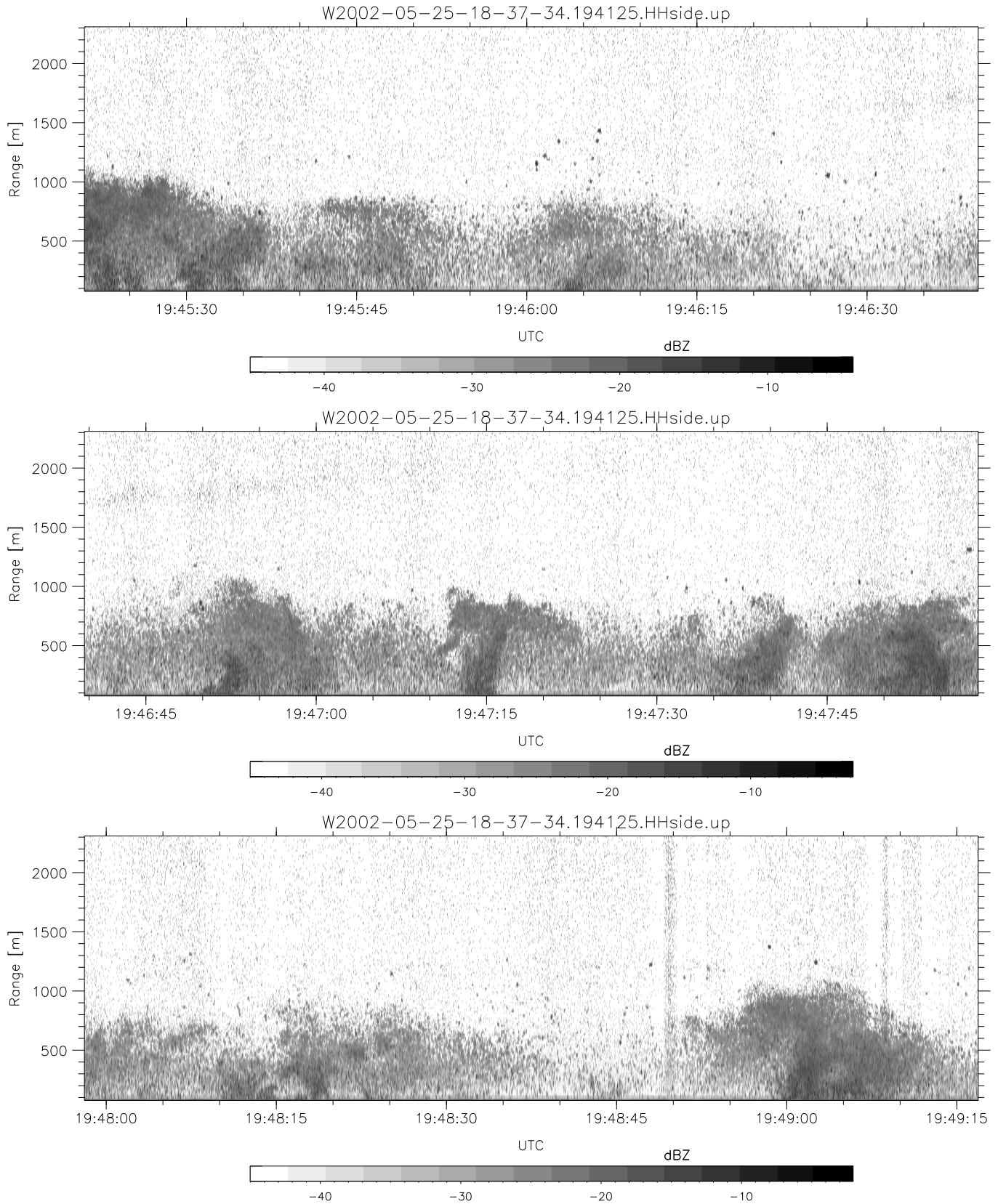


IHOP 2002 (dual-antenna config, modes 1,3,4,7) Data (cal: 49.0,50.0)

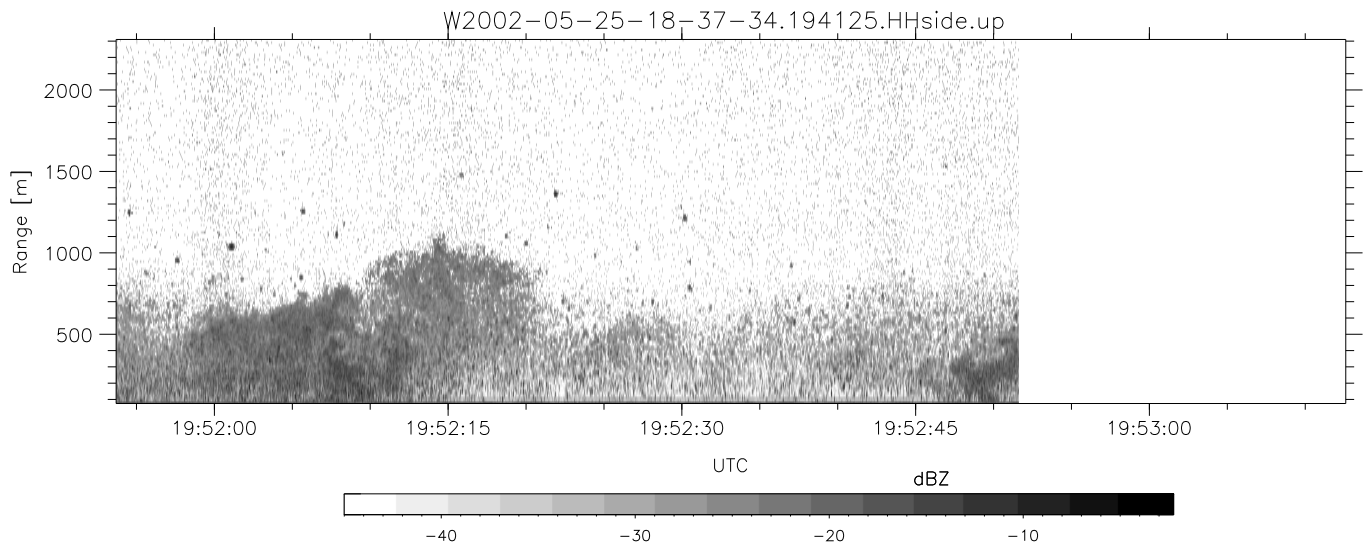
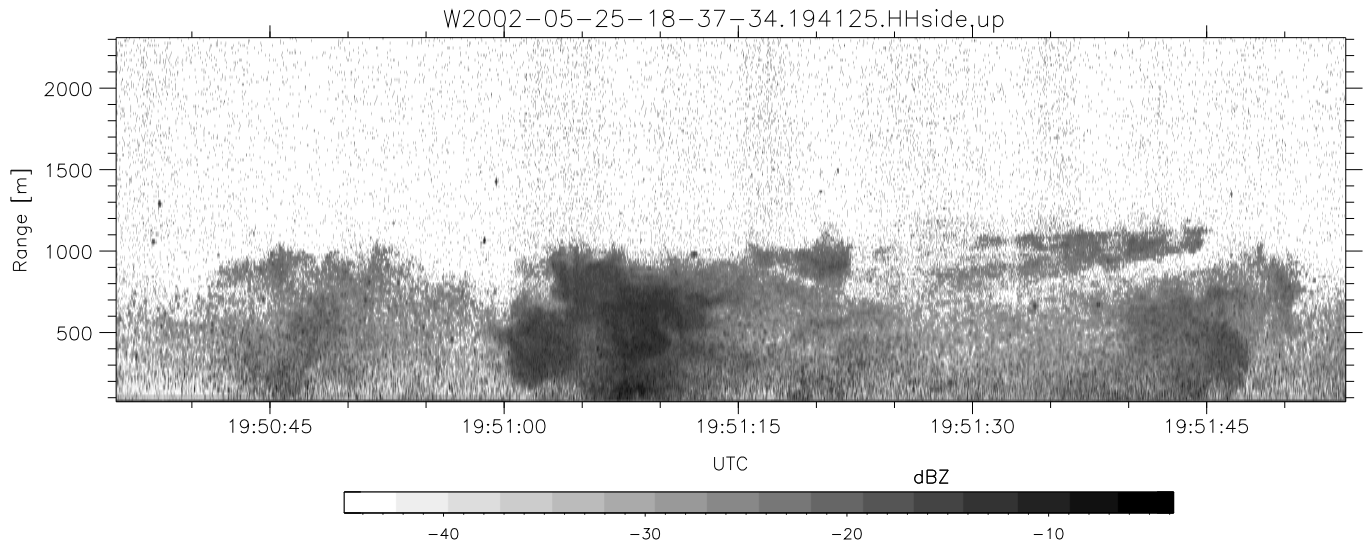
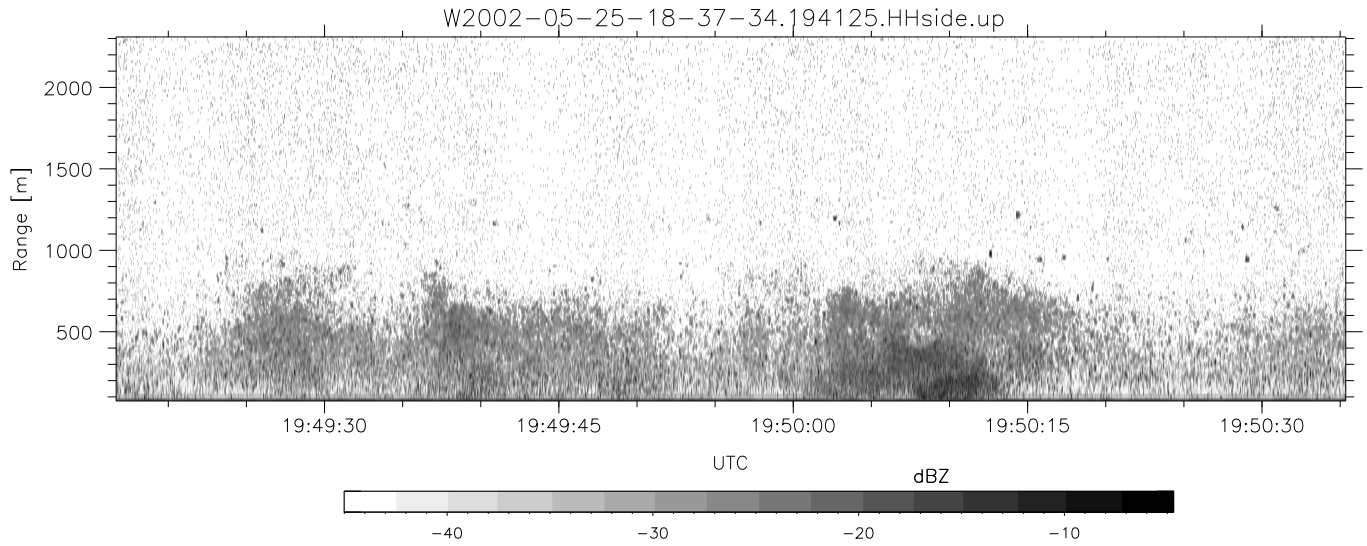
W2002-05-25-18-37-34 - SPPMAG
 IRIG:1,UTC: 18:37:19.18 to 20:21:21.98, Dur: 6242s
 TimeLngth: 6242.80s, TimeInt: 27ms (35.9pps)
 TimeCor=-13.0s, DSPDif(mn,mx,min):25,20,296
 PPS(min,max,std): 30,42,2.98
 Prof: 1571 to 225383, NumProf(t/r): 223812/26357
 ProcTime/Recs: 19:41:25-19:52:51/131785-158141
 MxACQtime: 17ms; DRate: 85.8KB/s; Flags: 0, 0, 0
 Pulse: 275ns, IFfilt: 5.0MHz; ppPol: HH
 TxPol: H, PRF: 20 kHz
 Range: Delay 75m, Spacing 15m, Gates 150
 Ave. Pulses: 348, Rng/Prof Aspect@90m/s: 6.0

	Min	Max	Mean	Std	Varc%
hhN(dB)	-66.35	-64.60	-65.49	-78.50	5.0
vvN(dB)	-66.22	-64.46	-65.25	-78.20	5.1
hhL(dB)	-19.90	-8.25	-12.38	-16.77	36.4
vhL(dB)	-22.20	-9.17	-12.84	-17.68	32.8
ppN(m/s)	-15.80	15.80	0.11	9.13	
ppT(m/s)	-0.04	0.03	-0.00	0.01	
vh/hh(dB)	-NaN	-1.22	-13.13	-9.10	253.
hnjmp(dB)	-1.42	1.10	-0.10	-11.82	6.7
vnjmp(dB)	-1.30	1.00	-0.10	-11.70	6.9



IHOP 2002 (dual-antenna config, modes 1,3,4,7) Data (cal: 49.0,50.0)

W2002-05-25-18-37-34 - SPPMAG		Min	Max	Mean	Std	Varc%
IRIG:1,UTC: 18:37:19.18 to 20:21:21.98, Dur: 6242s	hhN (dB)	-66.35	-64.60	-65.49	-78.50	5.0
TimeLngth: 6242.80s, TimeInt: 27ms (35.9pps)	vvN (dB)	-66.22	-64.46	-65.25	-78.20	5.1
TimeCor=-13.0s, DSPDif(mn,mx,min):25,20,296	hhL (dB)	-19.90	-8.25	-12.38	-16.77	36.4
PPS(min,max,std): 30,42,2.98	vhL (dB)	-22.20	-9.17	-12.84	-17.68	32.8
Prof: 1571 to 225383, NumProf(t/r): 223812/26357	ppN (m/s)	-15.80	15.80	0.11	9.13	
ProcTime/Recs: 19:41:25-19:52:51/131785-158141	ppT (m/s)	-0.04	0.03	-0.00	0.01	
MxACQtime: 17ms; DRate: 85.8KB/s; Flags: 0, 0, 0	vh/hh (dB)	-NaN	-1.22	-13.13	-9.10	253.
Pulse: 275ns, IFfilt: 5.0MHz; ppPol: HH	hn_jmp (dB)	-1.42	1.10	-0.10	-11.82	6.7
TxPol: H, PRF: 20 kHz	vn_jmp (dB)	-1.30	1.00	-0.10	-11.70	6.9
Range: Delay 75m, Spacing 15m, Gates 150						
Ave. Pulses: 348, Rng/Prof Aspect@90m/s: 6.0						



IHOP 2002 (dual-antenna config, modes 1,3,4,7) Data (cal: 49.0,50.0)

W2002-05-25-18-37-34 - SPPMAG
 IRIG:1,UTC: 18:37:19.18 to 20:21:21.98, Dur: 6242s
 TimeLngth: 6242.80s, TimeInt: 27ms (35.9pps)
 TimeCor=-13.0s, DSPDif(mn,mx,min):25,20,296
 PPS(min,max,std): 30,42,2.98
 Prof: 1571 to 225383, NumProf(t/r): 223812/26357
 ProcTime/Recs: 19:41:25-19:52:51/131785-158141
 MxACQtime: 17ms; DRate: 85.8KB/s; Flags: 0, 0, 0
 Pulse: 275ns, IFfilt: 5.0MHz; ppPol: HH
 TxPol: H, PRF: 20 kHz
 Range: Delay 75m, Spacing 15m, Gates 150
 Ave. Pulses: 348, Rng/Prof Aspect@90m/s: 6.0

	Min	Max	Mean	Std	Varc%
hhN(dB)	-66.35	-64.60	-65.49	-78.50	5.0
vvN(dB)	-66.22	-64.46	-65.25	-78.20	5.1
hhL(dB)	-19.90	-8.25	-12.38	-16.77	36.4
vhL(dB)	-22.20	-9.17	-12.84	-17.68	32.8
ppN(m/s)	-15.80	15.80	0.11	9.13	
ppT(m/s)	-0.04	0.03	-0.00	0.01	
vh/hh(dB)	-NaN	-1.22	-13.13	-9.10	253.
hnjmp(dB)	-1.42	1.10	-0.10	-11.82	6.7
vnjmp(dB)	-1.30	1.00	-0.10	-11.70	6.9