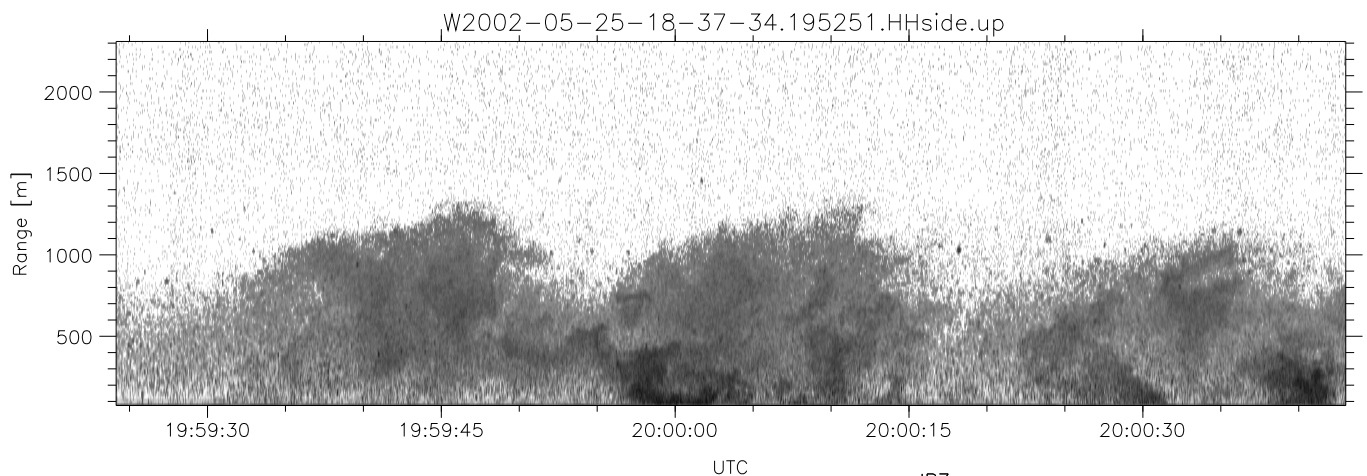
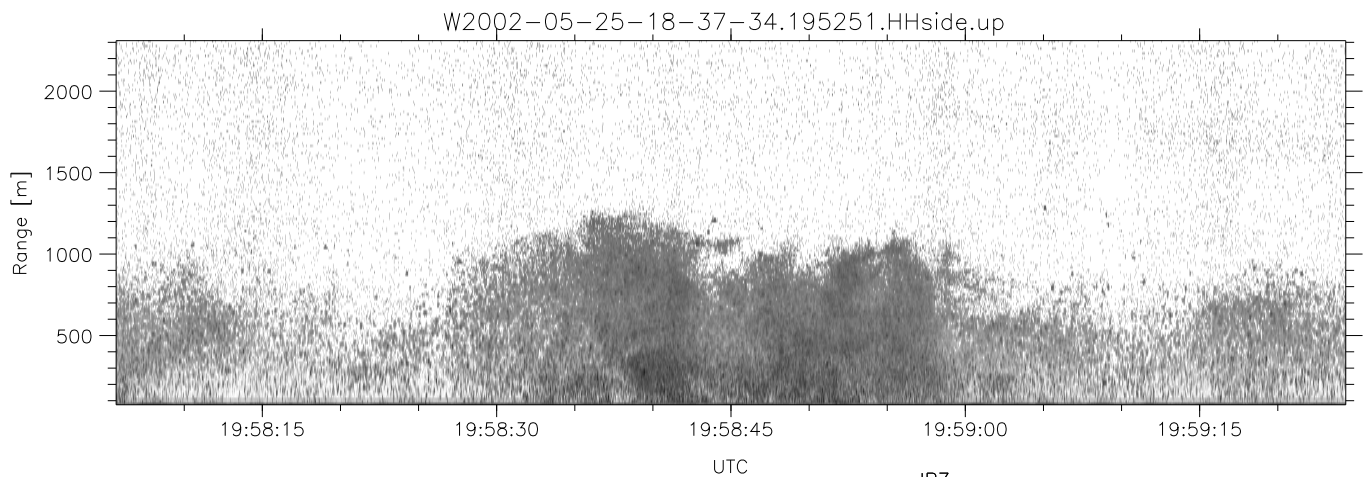
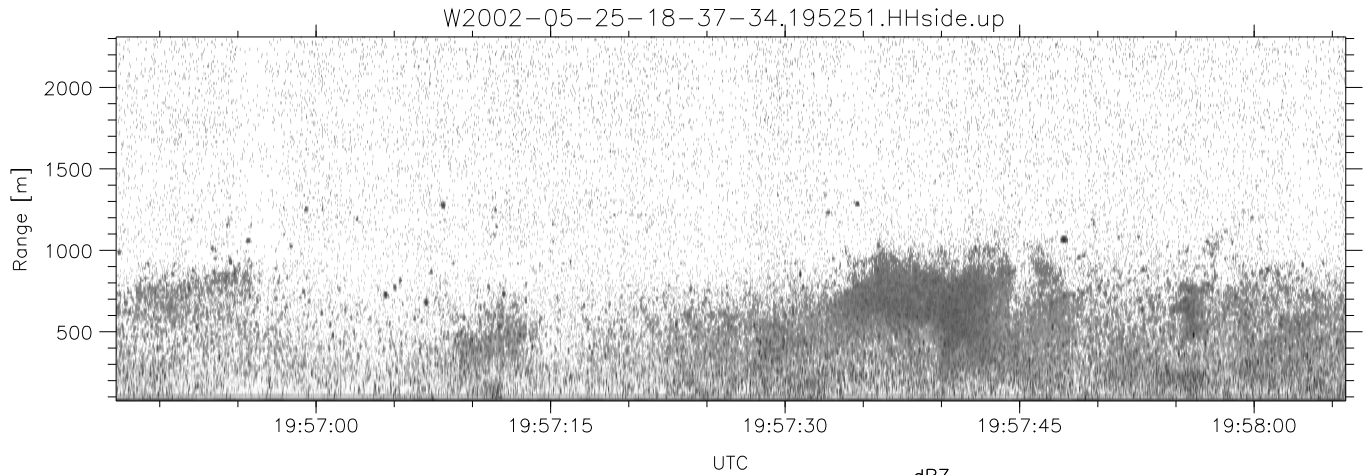


IHOP 2002 (dual-antenna config, modes 1,3,4,7) Data (cal: 49.0,50.0)

W2002-05-25-18-37-34 - SPPMAG
 IRIG:1,UTC: 18:37:19.18 to 20:21:21.98, Dur: 6242s
 TimeLngth: 6242.80s, TimeInt: 27ms (35.9pps)
 TimeCor=-13.0s, DSPDif(mn,mx,min):26,20,408
 PPS(min,max,std): 26,42,2.98
 Prof: 1571 to 225383, NumProf(t/r): 223812/26357
 ProcTime/Recs: 19:52:51-20:04:17/158142-184498
 MxACQtime: 17ms; DRate: 85.8KB/s; Flags: 0, 0, 0
 Pulse: 275ns, IFfilt: 5.0MHz; ppPol: HH
 TxPol: H, PRF: 20 kHz
 Range: Delay 75m, Spacing 15m, Gates 150
 Ave. Pulses: 348, Rng/Prof Aspect@90m/s: 6.0

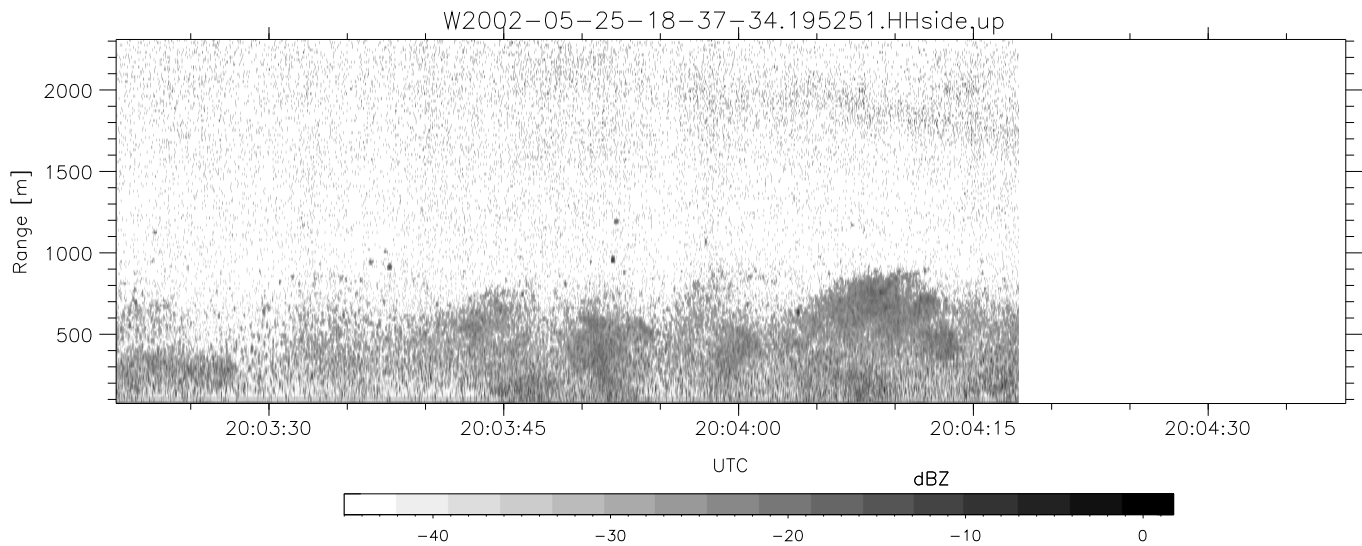
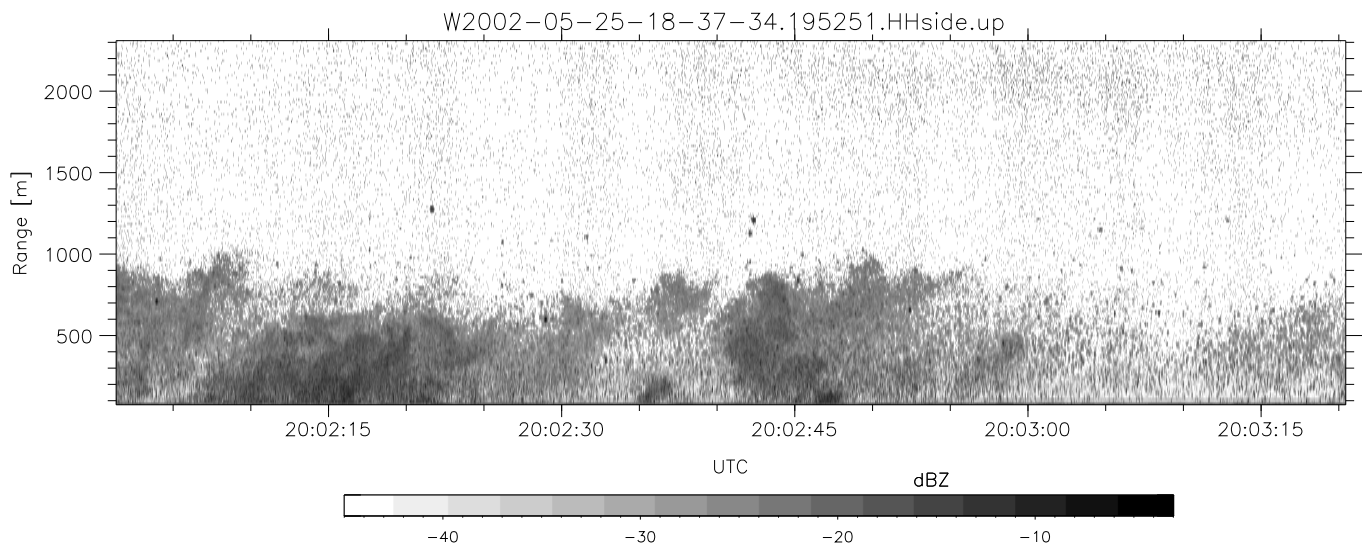
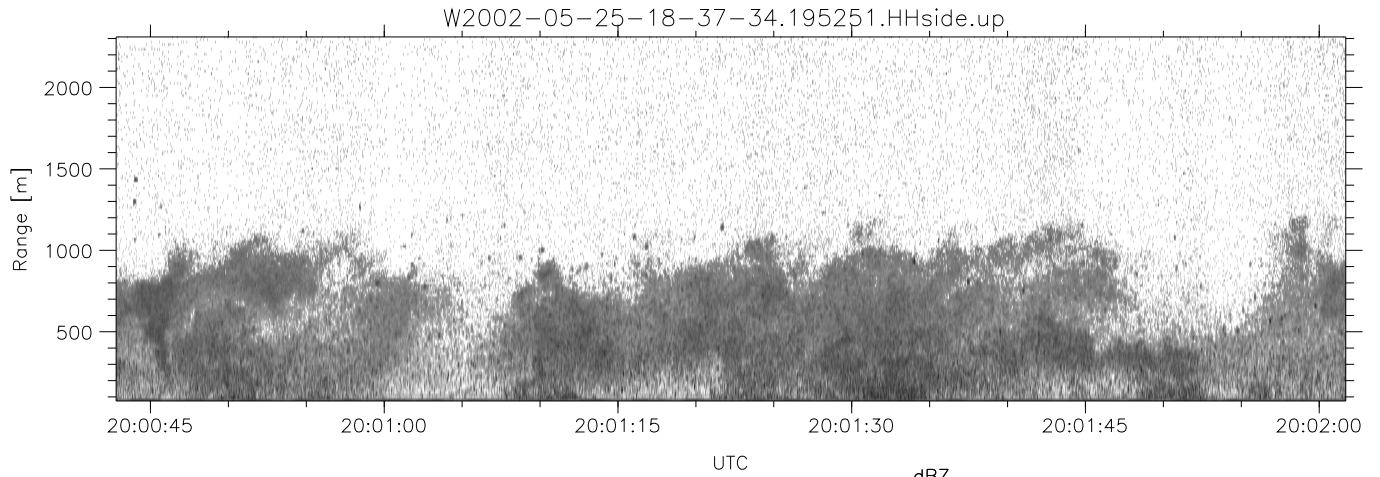
| | Min | Max | Mean | Std | Varc% |
|-----------|--------|--------|--------|--------|-------|
| hhN(dB) | -66.36 | -64.69 | -65.53 | -78.60 | 4.9 |
| vvN(dB) | -66.16 | -64.46 | -65.30 | -78.30 | 5.0 |
| hhL(dB) | -20.04 | -8.35 | -12.78 | -16.93 | 38.5 |
| vhL(dB) | -20.79 | -9.28 | -12.92 | -17.81 | 32.5 |
| ppN(m/s) | -15.80 | 15.80 | 0.06 | 9.07 | |
| ppT(m/s) | -0.04 | 0.03 | -0.00 | 0.01 | |
| vh/hh(dB) | -NaN | -4.85 | -25.25 | -17.86 | 548. |
| hnjmp(dB) | -1.12 | 1.14 | 0.12 | -11.58 | 6.8 |
| vnjmp(dB) | -0.97 | 1.23 | 0.13 | -11.51 | 6.9 |



IHOP 2002 (dual-antenna config, modes 1,3,4,7) Data (cal: 49.0,50.0)

W2002-05-25-18-37-34 - SPPMAG
 IRIG:1,UTC: 18:37:19.18 to 20:21:21.98, Dur: 6242s
 TimeLngth: 6242.80s, TimeInt: 27ms (35.9pps)
 TimeCor=-13.0s, DSPDif(mn,mx,min):26,20,408
 PPS(min,max,std): 26,42,2.98
 Prof: 1571 to 225383, NumProf(t/r): 223812/26357
 ProcTime/Recs: 19:52:51-20:04:17/158142-184498
 MxACQtime: 17ms; DRate: 85.8KB/s; Flags: 0, 0, 0
 Pulse: 275ns, IFfilt: 5.0MHz; ppPol: HH
 TxPol: H, PRF: 20 kHz
 Range: Delay 75m, Spacing 15m, Gates 150
 Ave. Pulses: 348, Rng/Prof Aspect@90m/s: 6.0

| | Min | Max | Mean | Std | Varc% |
|-----------|--------|--------|--------|--------|-------|
| hhN(dB) | -66.36 | -64.69 | -65.53 | -78.60 | 4.9 |
| vvN(dB) | -66.16 | -64.46 | -65.30 | -78.30 | 5.0 |
| hhL(dB) | -20.04 | -8.35 | -12.78 | -16.93 | 38.5 |
| vhL(dB) | -20.79 | -9.28 | -12.92 | -17.81 | 32.5 |
| ppN(m/s) | -15.80 | 15.80 | 0.06 | 9.07 | |
| ppT(m/s) | -0.04 | 0.03 | -0.00 | 0.01 | |
| vh/hh(dB) | -NaN | -4.85 | -25.25 | -17.86 | 548. |
| hnjmp(dB) | -1.12 | 1.14 | 0.12 | -11.58 | 6.8 |
| vnjmp(dB) | -0.97 | 1.23 | 0.13 | -11.51 | 6.9 |



IHOP 2002 (dual-antenna config, modes 1,3,4,7) Data (cal: 49.0,50.0)

W2002-05-25-18-37-34 - SPPMAG
 IRIG:1,UTC: 18:37:19.18 to 20:21:21.98, Dur: 6242s
 TimeLngth: 6242.80s, TimeInt: 27ms (35.9pps)
 TimeCor=-13.0s, DSPDif(mn,mx,min):26,20,408
 PPS(min,max,std): 26,42,2.98
 Prof: 1571 to 225383, NumProf(t/r): 223812/26357
 ProcTime/Recs: 19:52:51-20:04:17/158142-184498
 MxACQtime: 17ms; DRate: 85.8KB/s; Flags: 0, 0, 0
 Pulse: 275ns, IFfilt: 5.0MHz; ppPol: HH
 TxPol: H, PRF: 20 kHz
 Range: Delay 75m, Spacing 15m, Gates 150
 Ave. Pulses: 348, Rng/Prof Aspect@90m/s: 6.0

| | Min | Max | Mean | Std | Varc% |
|-----------|--------|--------|--------|--------|-------|
| hhN(dB) | -66.36 | -64.69 | -65.53 | -78.60 | 4.9 |
| vvN(dB) | -66.16 | -64.46 | -65.30 | -78.30 | 5.0 |
| hhL(dB) | -20.04 | -8.35 | -12.78 | -16.93 | 38.5 |
| vhL(dB) | -20.79 | -9.28 | -12.92 | -17.81 | 32.5 |
| ppN(m/s) | -15.80 | 15.80 | 0.06 | 9.07 | |
| ppT(m/s) | -0.04 | 0.03 | -0.00 | 0.01 | |
| vh/hh(dB) | -NaN | -4.85 | -25.25 | -17.86 | 548. |
| hnjmp(dB) | -1.12 | 1.14 | 0.12 | -11.58 | 6.8 |
| vnjmp(dB) | -0.97 | 1.23 | 0.13 | -11.51 | 6.9 |