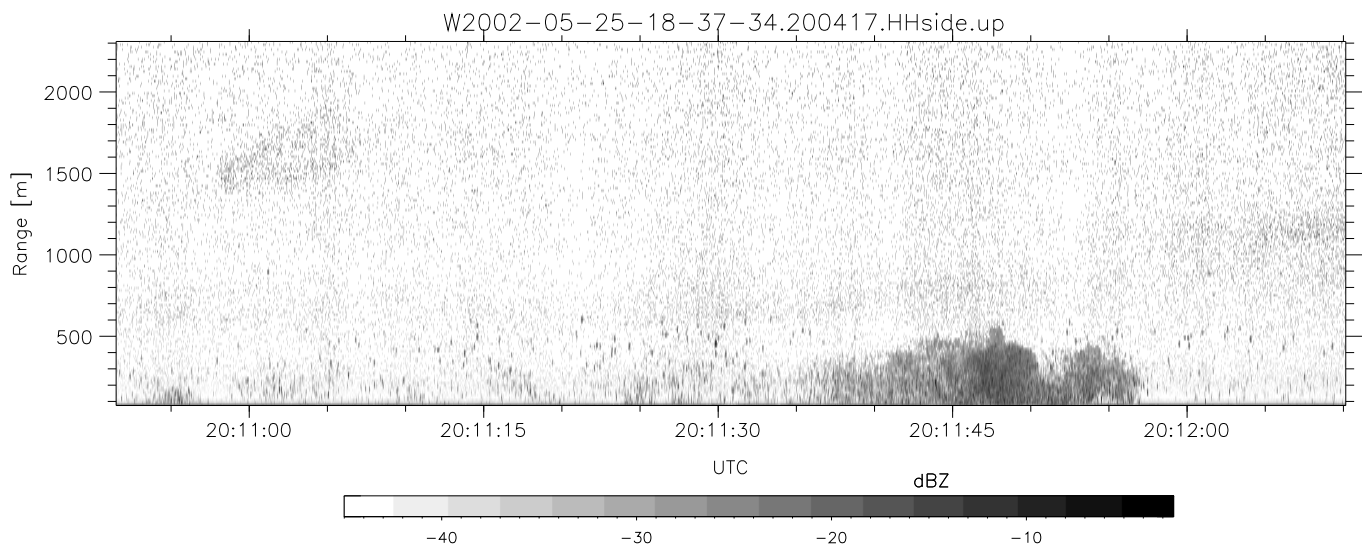
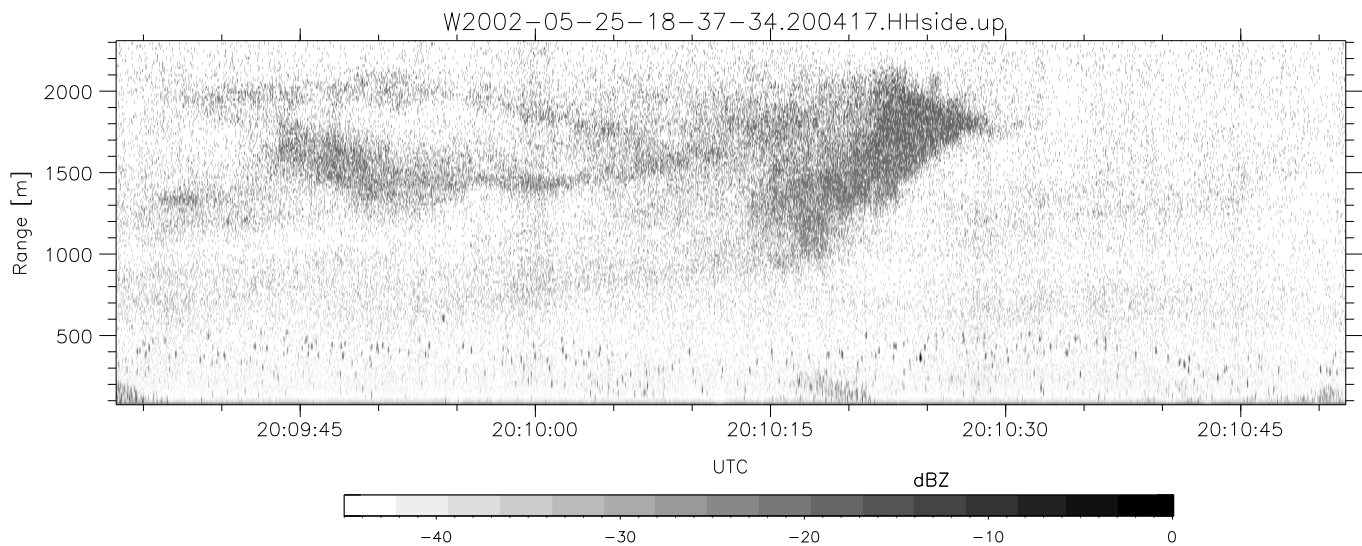
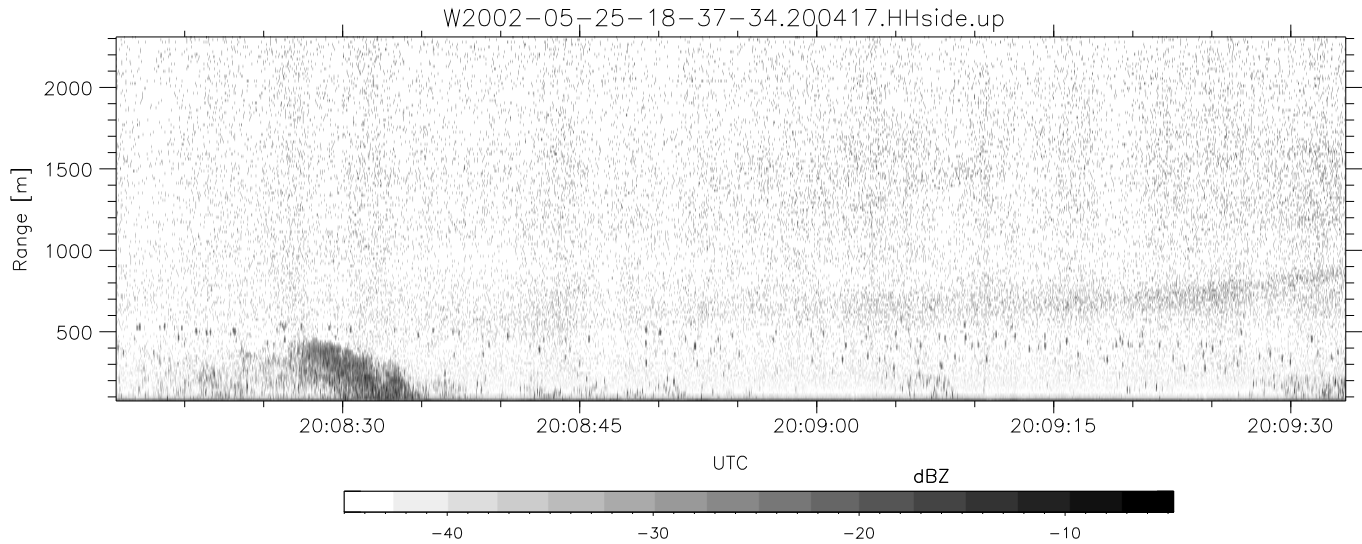


IHOP 2002 (dual-antenna config, modes 1,3,4,7) Data (cal: 49.0,50.0)

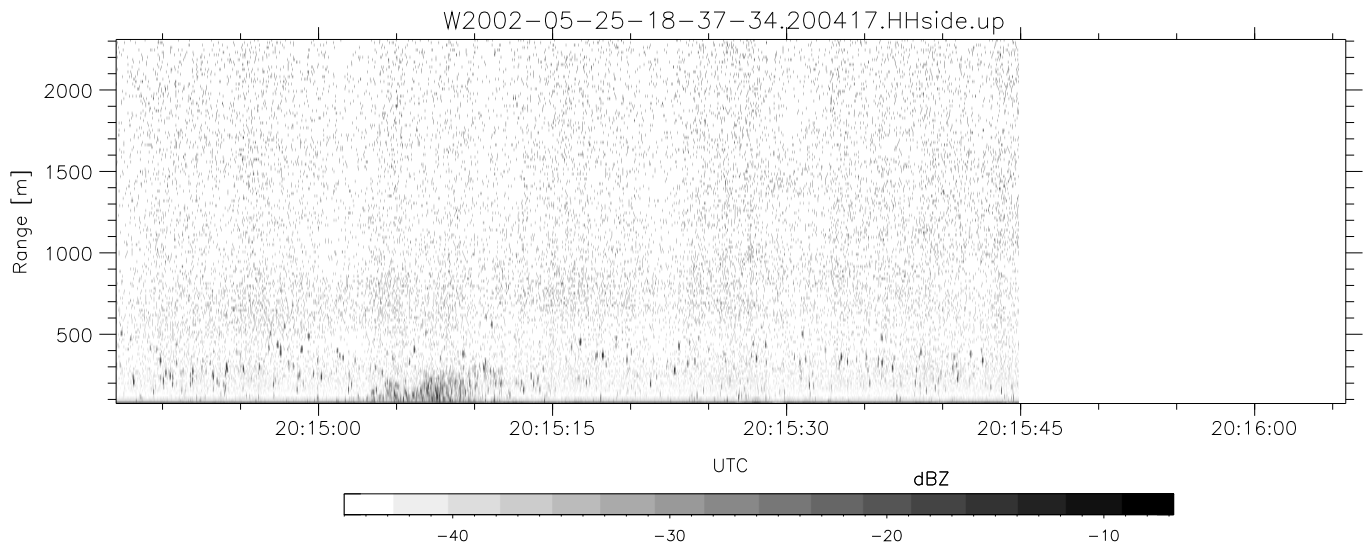
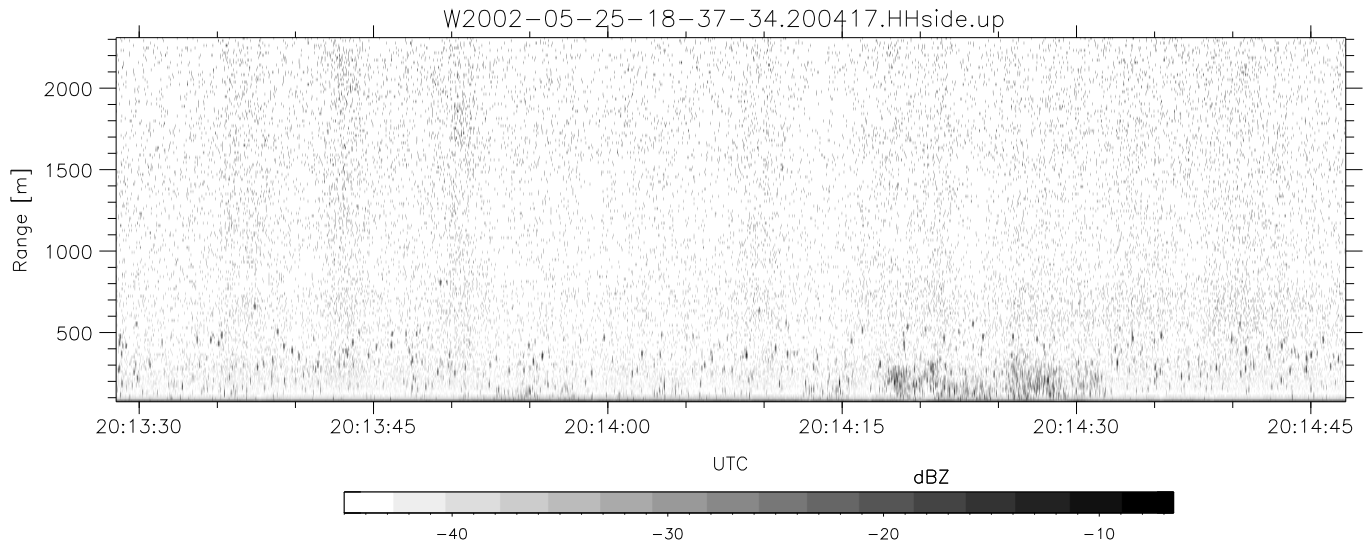
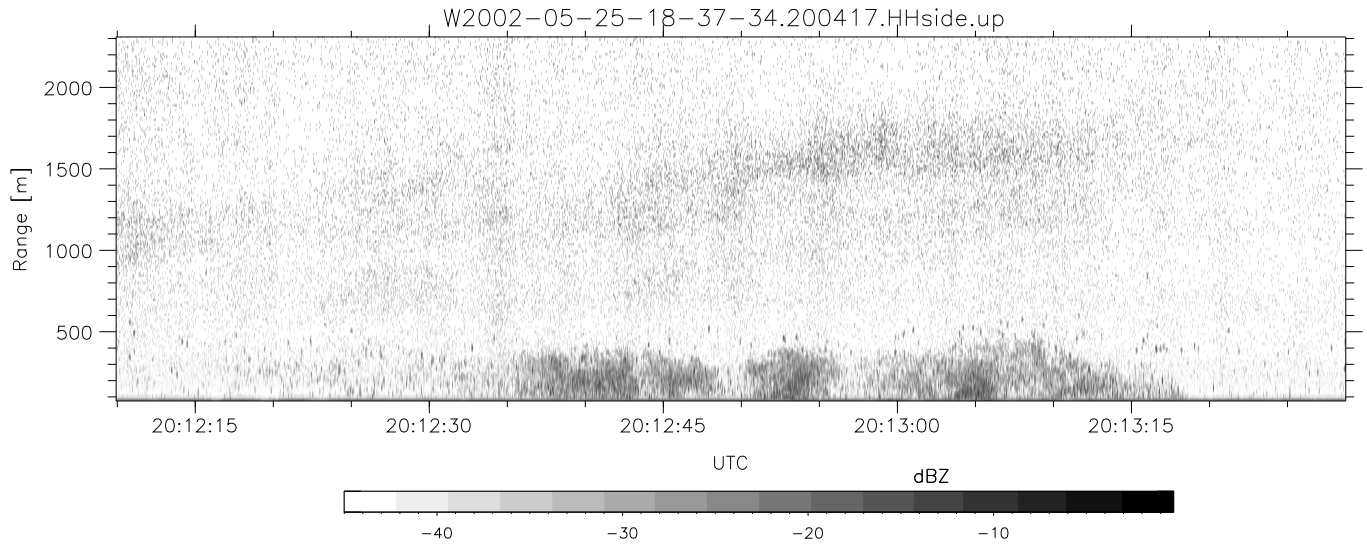
W2002-05-25-18-37-34 - SPPMAG	Min	Max	Mean	Std	Varc%	
IRIG:1,UTC: 18:37:19.18 to 20:21:21.98, Dur: 6242s	hhN (dB)	-66.48	-64.71	-65.58	-78.59	5.0
TimeLngth: 6242.80s, TimeInt: 27ms (35.9pps)	vvN (dB)	-66.27	-64.46	-65.33	-78.34	5.0
TimeCor=-13.0s, DSPDif(mn,mx,min):25,20,472	hhL (dB)	-25.28	-8.85	-15.61	-18.54	50.9
PPS(min,max,std): 22,42,3.22	vhL (dB)	-24.99	-9.65	-16.09	-18.69	55.0
Prof: 1571 to 225383, NumProf(t/r): 223812/26357	ppN (m/s)	-15.80	15.80	-0.02	9.08	
ProcTime/Recs: 20:04:17-20:15:44/184499-210855	ppT (m/s)	-0.04	0.03	-0.00	0.01	
MxACQtime: 17ms; DRate: 85.8KB/s; Flags: 0, 0, 0	vh/hh (dB)	-NaN	-5.67	-28.18	-18.54	920.
Pulse: 275ns, IFfilt: 5.0MHz; ppPol: HH	hn_jmp (dB)	-1.15	1.08	-0.10	-11.79	6.8
TxPol: H, PRF: 20 kHz	vn_jmp (dB)	-1.24	1.04	-0.11	-11.75	6.8
Range: Delay 75m, Spacing 15m, Gates 150						
Ave. Pulses: 348, Rng/Prof Aspect@90m/s: 6.0						



IHOP 2002 (dual-antenna config, modes 1,3,4,7) Data (cal: 49.0,50.0)

W2002-05-25-18-37-34 - SPPMAG
 IRIG:1,UTC: 18:37:19.18 to 20:21:21.98, Dur: 6242s
 TimeLngth: 6242.80s, TimeInt: 27ms (35.9pps)
 TimeCor=-13.0s, DSPDif(mn,mx,min):25,20,472
 PPS(min,max,std): 22,42,3.22
 Prof: 1571 to 225383, NumProf(t/r): 223812/26357
 ProcTime/Recs: 20:04:17-20:15:44/184499-210855
 MxACQtime: 17ms; DRate: 85.8KB/s; Flags: 0, 0, 0
 Pulse: 275ns, IFfilt: 5.0MHz; ppPol: HH
 TxPol: H, PRF: 20 kHz
 Range: Delay 75m, Spacing 15m, Gates 150
 Ave. Pulses: 348, Rng/Prof Aspect@90m/s: 6.0

	Min	Max	Mean	Std	Varc%
hhN (dB)	-66.48	-64.71	-65.58	-78.59	5.0
vvN (dB)	-66.27	-64.46	-65.33	-78.34	5.0
hhL (dB)	-25.28	-8.85	-15.61	-18.54	50.9
vhL (dB)	-24.99	-9.65	-16.09	-18.69	55.0
ppN (m/s)	-15.80	15.80	-0.02	9.08	
ppT (m/s)	-0.04	0.03	-0.00	0.01	
vh/hh (dB)	-NaN	-5.67	-28.18	-18.54	920.
hn_jmp (dB)	-1.15	1.08	-0.10	-11.79	6.8
vn_jmp (dB)	-1.24	1.04	-0.11	-11.75	6.8



IHOP 2002 (dual-antenna config, modes 1,3,4,7) Data (cal: 49.0,50.0)

W2002-05-25-18-37-34 - SPPMAG
 IRIG:1,UTC: 18:37:19.18 to 20:21:21.98, Dur: 6242s
 TimeLngth: 6242.80s, TimeInt: 27ms (35.9pps)
 TimeCor=-13.0s, DSPDif(mn,mx,min):25,20,472
 PPS(min,max,std): 22,42,3.22
 Prof: 1571 to 225383, NumProf(t/r): 223812/26357
 ProcTime/Recs: 20:04:17-20:15:44/184499-210855
 MxACQtime: 17ms; DRate: 85.8KB/s; Flags: 0, 0, 0
 Pulse: 275ns, IFfilt: 5.0MHz; ppPol: HH
 TxPol: H, PRF: 20 kHz
 Range: Delay 75m, Spacing 15m, Gates 150
 Ave. Pulses: 348, Rng/Prof Aspect@90m/s: 6.0

	Min	Max	Mean	Std	Varc%
hhN(dB)	-66.48	-64.71	-65.58	-78.59	5.0
vvN(dB)	-66.27	-64.46	-65.33	-78.34	5.0
hhL(dB)	-25.28	-8.85	-15.61	-18.54	50.9
vhL(dB)	-24.99	-9.65	-16.09	-18.69	55.0
ppN(m/s)	-15.80	15.80	-0.02	9.08	
ppT(m/s)	-0.04	0.03	-0.00	0.01	
vh/hh(dB)	-NaN	-5.67	-28.18	-18.54	920.
hnjmp(dB)	-1.15	1.08	-0.10	-11.79	6.8
vnjmp(dB)	-1.24	1.04	-0.11	-11.75	6.8