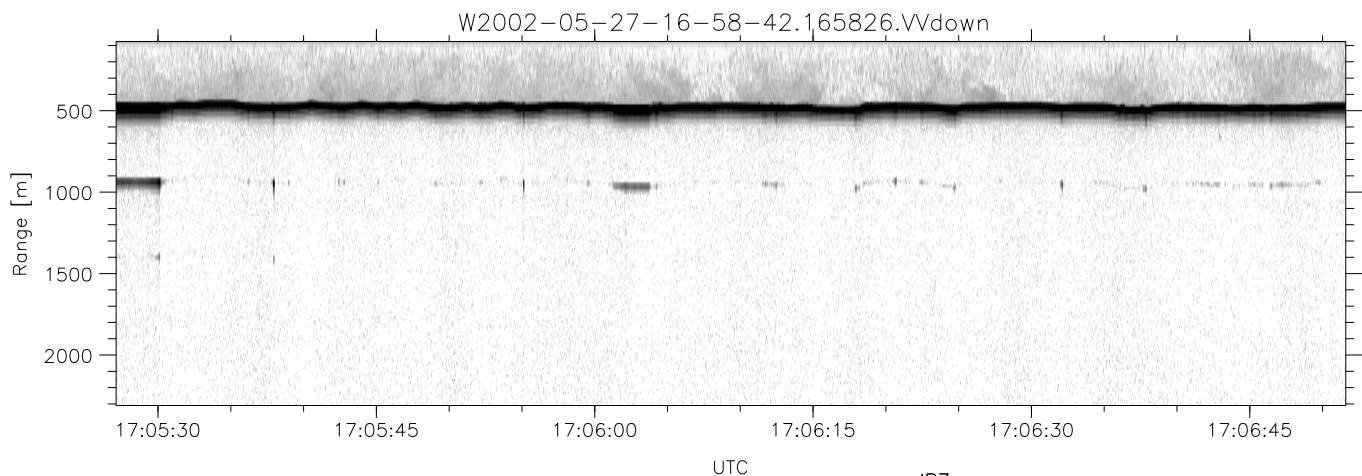
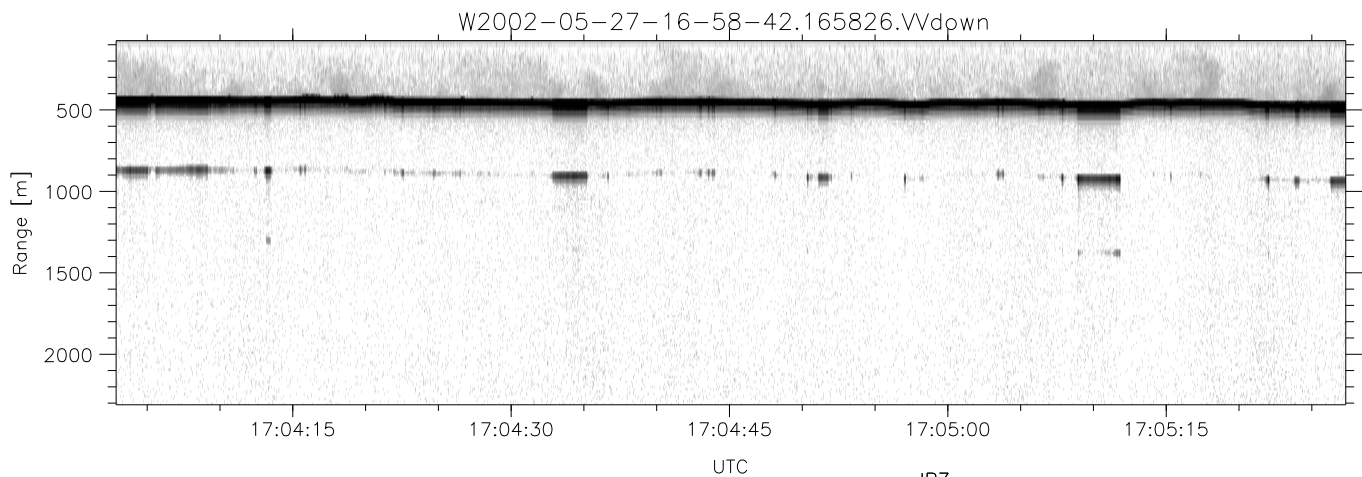
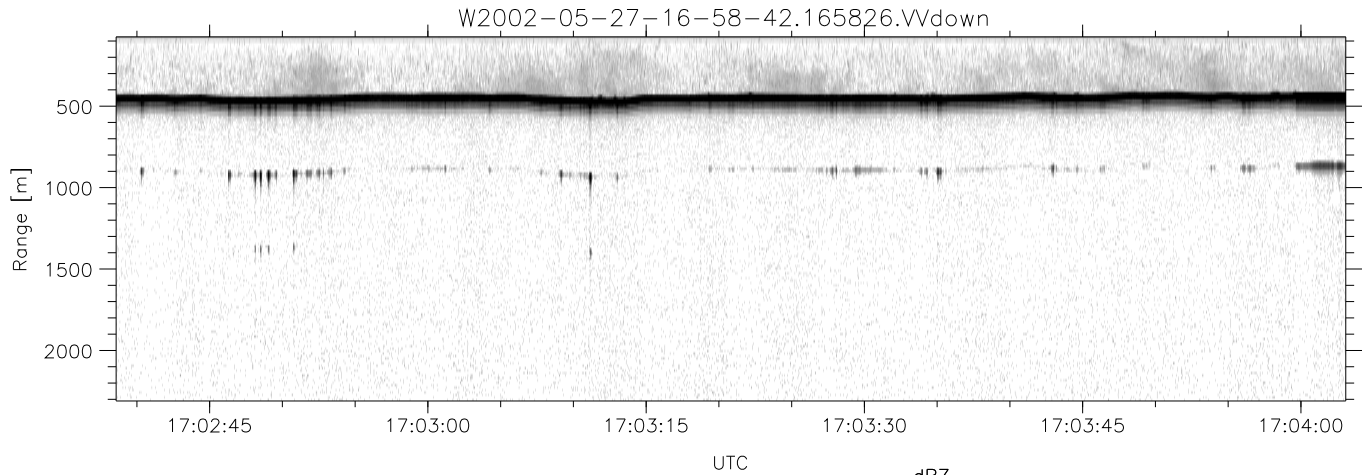


IHOP 2002 (dual-antenna config, modes 1,3,4,7) Data (cal: 49.0,50.0)

W2002-05-27-16-58-42 - SPPMAG
 IRIG:1,UTC: 16:58:26.30 to 17:10:05.78, Dur: 699s
 TimeLngth: 699.48s, TimeInt: 25ms (38.8pps)
 TimeCor=-13.0s, DSPDif(mn,mx,min):24,20,286
 PPS(min,max,std): 15,42,3.20
 Prof: 368 to 27482, NumProf(t/r): 27114/27114
 MxACQtime: 17ms; DRate: 92.8KB/s; Flags: 0, 0, 0
 Pulse: 275ns, IFfilt: 5.0MHz; ppPol: VV
 TxPol: V, PRF: 20 kHz
 Range: Delay 75m, Spacing 15m, Gates 150
 Ave. Pulses: 348, Rng/Prof Aspect@90m/s: 6.5

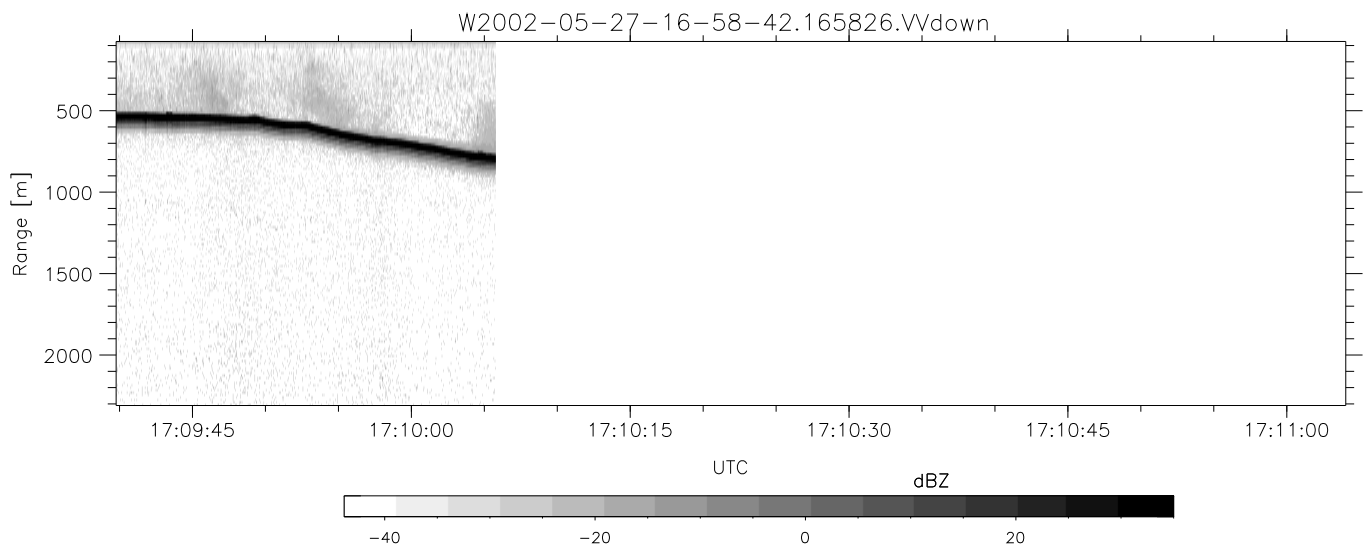
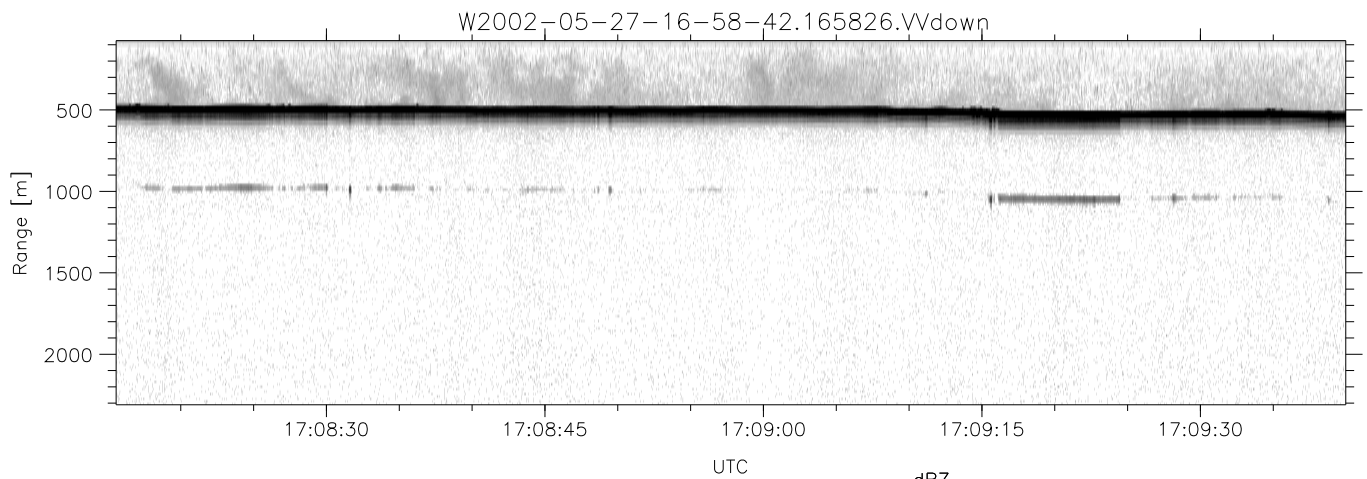
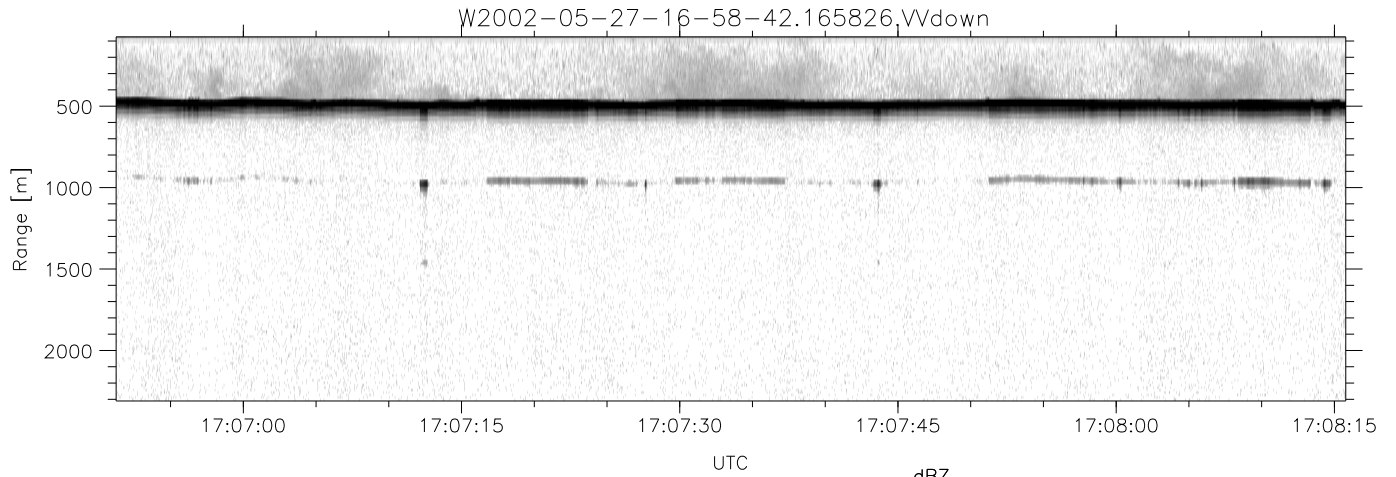
	Min	Max	Mean	Std	Varc%
hhN(dB)	-66.13	-64.21	-65.19	-78.19	5.0
vvN(dB)	-65.81	-64.03	-64.92	-77.96	5.0
vvL(dB)	-15.74	-9.34	-11.21	-19.48	14.9
hvL(dB)	-18.71	-12.40	-15.34	-22.92	17.5
ppN(m/s)	-15.80	15.80	0.01	8.94	
ppT(m/s)	-0.02	0.02	-0.00	0.01	
hv/vv(dB)	-NaN	-32.62	-52.78	-47.43	342.
hnjmp(dB)	-1.18	0.99	-0.11	-11.79	6.8
vnjmp(dB)	-1.23	0.96	-0.10	-11.80	6.8



IHOP 2002 (dual-antenna config, modes 1,3,4,7) Data (cal: 49.0,50.0)

W2002-05-27-16-58-42 - SPPMAG
 IRIG:1,UTC: 16:58:26.30 to 17:10:05.78, Dur: 699s
 TimeLngth: 699.48s, TimeInt: 25ms (38.8pps)
 TimeCor=-13.0s, DSPDif(mn,mx,min):24,20,286
 PPS(min,max,std): 15,42,3.20
 Prof: 368 to 27482, NumProf(t/r): 27114/27114
 MxACQtime: 17ms; DRate: 92.8KB/s; Flags: 0, 0, 0
 Pulse: 275ns, IFfilt: 5.0MHz; ppPol: VV
 TxPol: V, PRF: 20 kHz
 Range: Delay 75m, Spacing 15m, Gates 150
 Ave. Pulses: 348, Rng/Prof Aspect@90m/s: 6.5

	Min	Max	Mean	Std	Varc%
hhN(dB)	-66.13	-64.21	-65.19	-78.19	5.0
vvN(dB)	-65.81	-64.03	-64.92	-77.96	5.0
vvL(dB)	-15.74	-9.34	-11.21	-19.48	14.9
hvL(dB)	-18.71	-12.40	-15.34	-22.92	17.5
ppN(m/s)	-15.80	15.80	0.01	8.94	
ppT(m/s)	-0.02	0.02	-0.00	0.01	
hv/vv(dB)	-NaN	-32.62	-52.78	-47.43	342.
hnjmp(dB)	-1.18	0.99	-0.11	-11.79	6.8
vnjmp(dB)	-1.23	0.96	-0.10	-11.80	6.8



IHOP 2002 (dual-antenna config, modes 1,3,4,7) Data (cal: 49.0,50.0)

W2002-05-27-16-58-42 - SPPMAG
 IRIG:1,UTC: 16:58:26.30 to 17:10:05.78, Dur: 699s
 TimeLngth: 699.48s, TimeInt: 25ms (38.8pps)
 TimeCor=-13.0s, DSPDif(mn,mx,min):24,20,286
 PPS(min,max,std): 15,42,3.20
 Prof: 368 to 27482, NumProf(t/r): 27114/27114
 MxACQtime: 17ms; DRate: 92.8KB/s; Flags: 0, 0, 0
 Pulse: 275ns, IFfilt: 5.0MHz; ppPol: VV
 TxPol: V, PRF: 20 kHz
 Range: Delay 75m, Spacing 15m, Gates 150
 Ave. Pulses: 348, Rng/Prof Aspect@90m/s: 6.5

	Min	Max	Mean	Std	Varc%
hhN(dB)	-66.13	-64.21	-65.19	-78.19	5.0
vvN(dB)	-65.81	-64.03	-64.92	-77.96	5.0
vvL(dB)	-15.74	-9.34	-11.21	-19.48	14.9
hvL(dB)	-18.71	-12.40	-15.34	-22.92	17.5
ppN(m/s)	-15.80	15.80	0.01	8.94	
ppT(m/s)	-0.02	0.02	-0.00	0.01	
hv/vv(dB)	-NaN	-32.62	-52.78	-47.43	342.
hnjmp(dB)	-1.18	0.99	-0.11	-11.79	6.8
vnjmp(dB)	-1.23	0.96	-0.10	-11.80	6.8