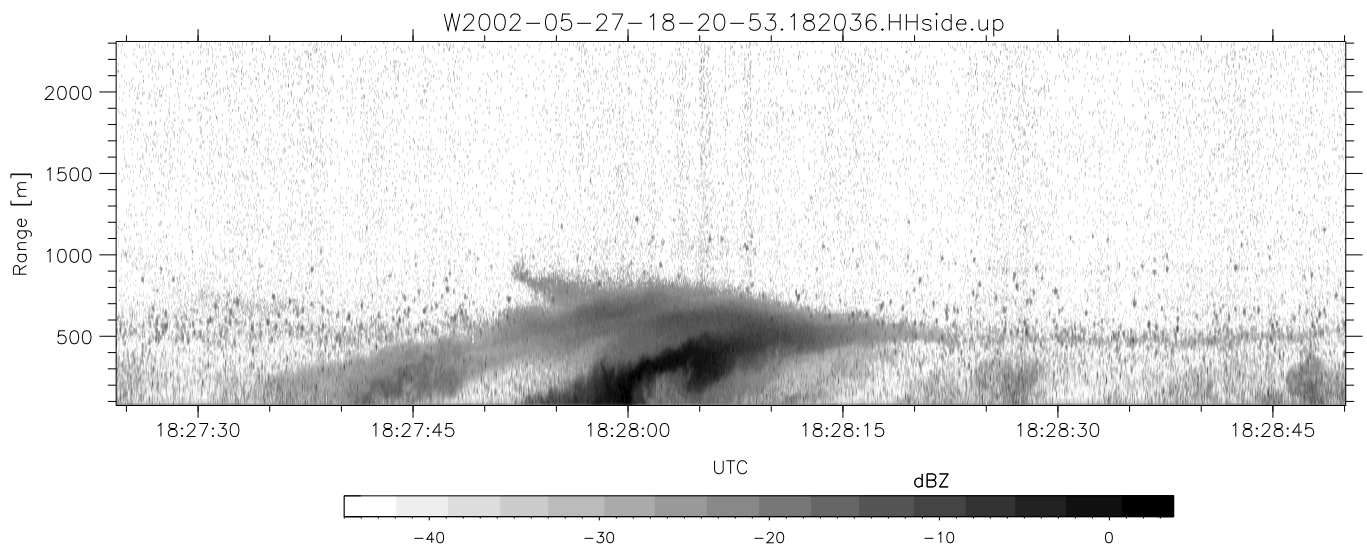
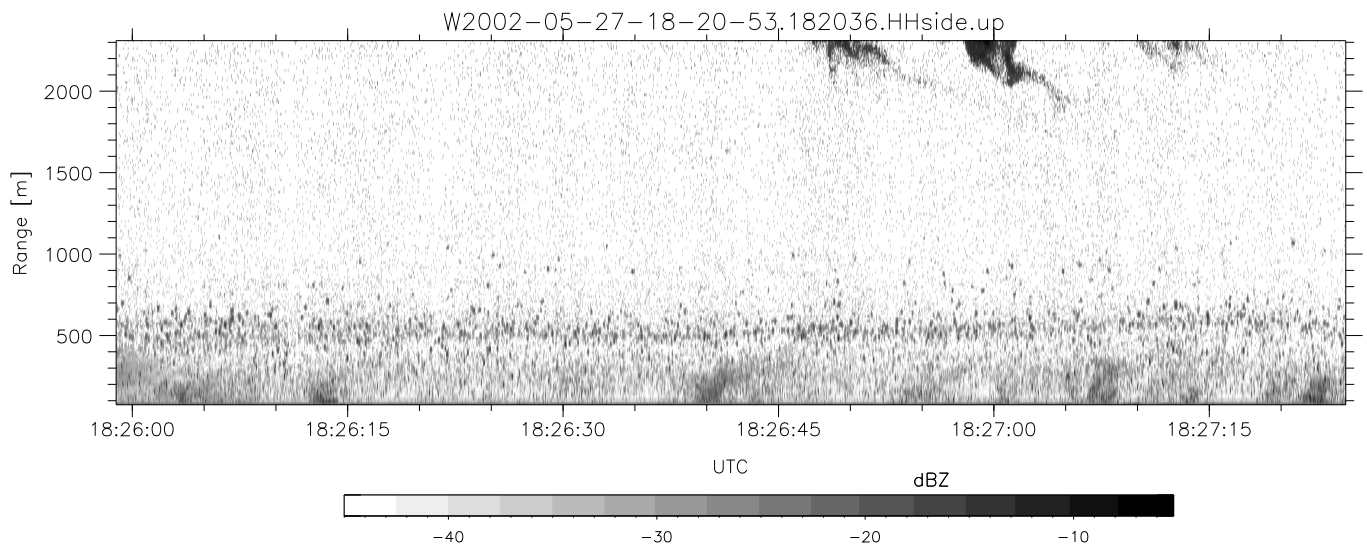
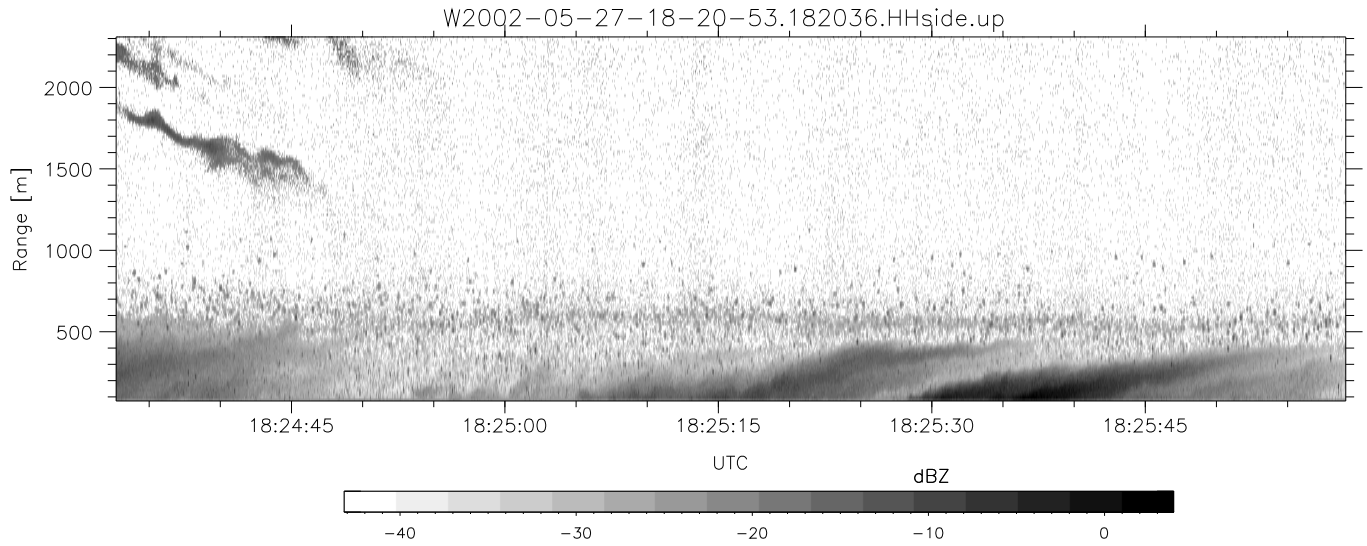


IHOP 2002 (dual-antenna config, modes 1,3,4,7) Data (cal: 49.0,50.0)

W2002-05-27-18-20-53 - SPPMAG
 IRIG:1,UTC: 18:20:36.18 to 18:41:23.17, Dur: 1247s
 TimeLngth: 1246.98s, TimeInt: 25ms (39.2pps)
 TimeCor=-13.0s, DSPDif(mn,mx,min):25,20,556
 PPS(min,max,std): 15,42,3.21
 Prof: 213 to 49043, NumProf(t/r): 48830/29369
 ProcTime/Recs: 18:20:36-18:32:58/0-29368
 MxACQtime: 17ms; DRate: 93.8KB/s; Flags: 0, 0, 0
 Pulse: 275ns, IFfilt: 5.0MHz; ppPol: HH
 TxPol: H, PRF: 20 kHz
 Range: Delay 75m, Spacing 15m, Gates 150
 Ave. Pulses: 348, Rng/Prof Aspect@90m/s: 6.5

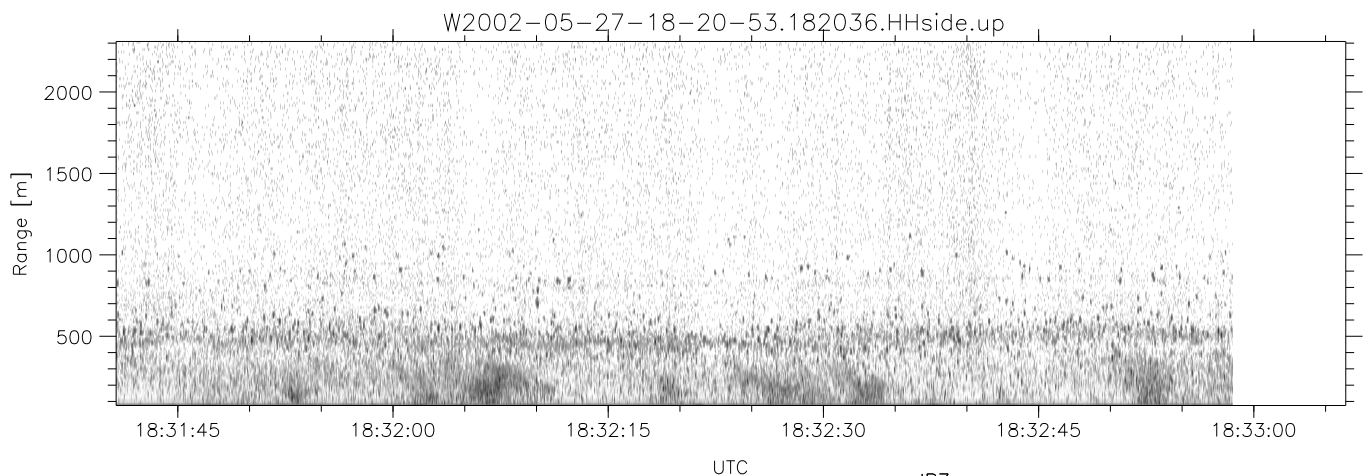
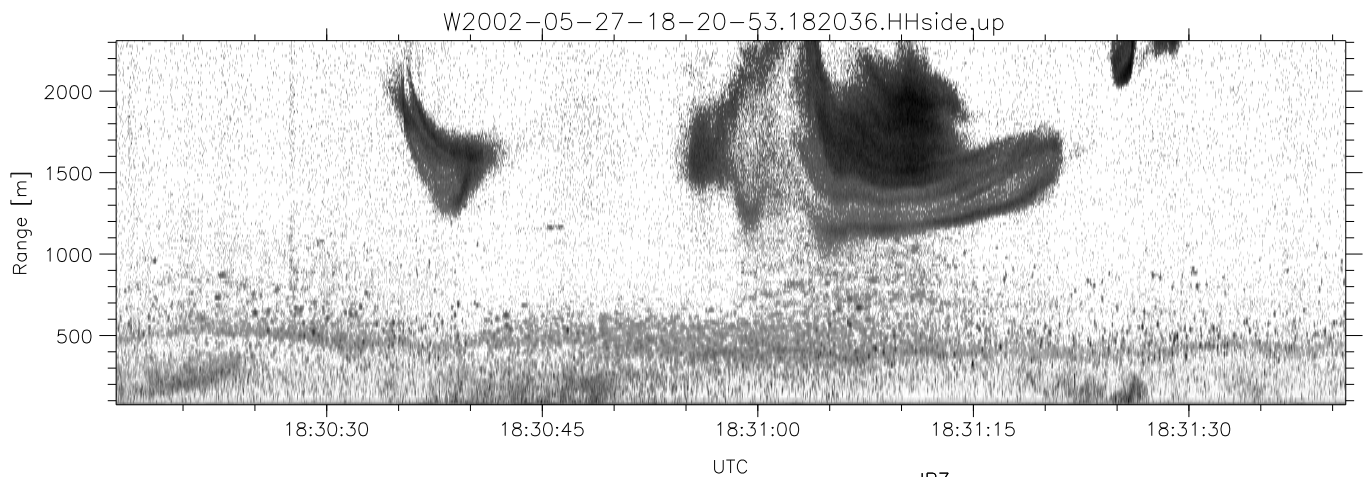
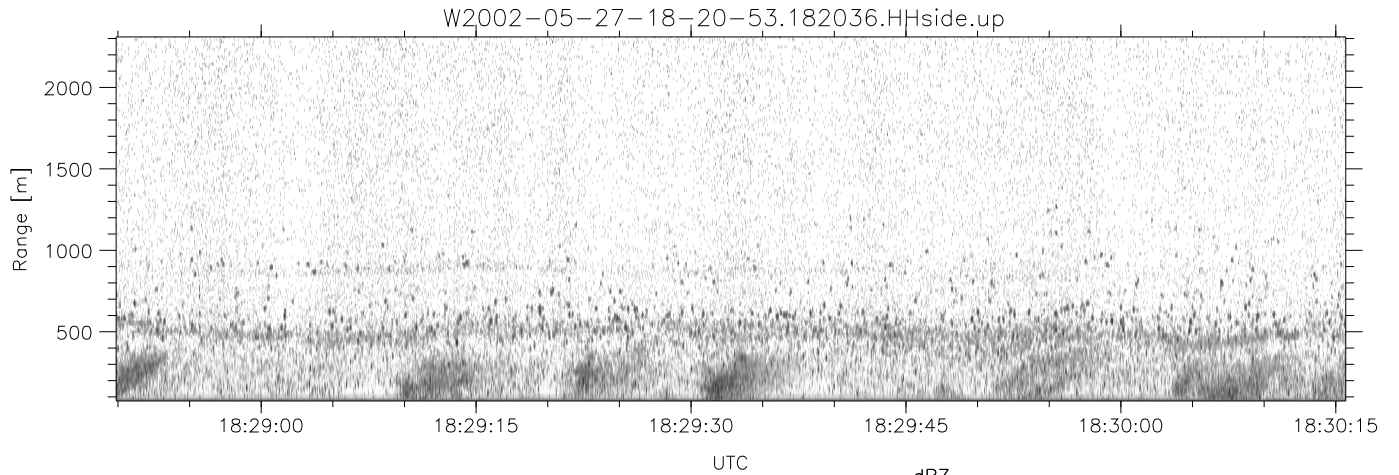
	Min	Max	Mean	Std	Varc%
hhN(dB)	-66.39	-64.59	-65.47	-78.30	5.2
vvN(dB)	-66.31	-64.48	-65.34	-78.32	5.0
hhL(dB)	-22.85	-9.79	-16.53	-20.43	40.7
vhL(dB)	-22.00	-9.99	-15.98	-19.61	43.3
ppN(m/s)	-15.80	15.80	0.24	9.03	
ppT(m/s)	-0.05	0.05	-0.00	0.01	
vh/hh(dB)	-NaN	14.77	-18.01	-4.10	2462
hnjmp(dB)	-1.03	1.11	0.12	-11.57	6.8
vnjmp(dB)	-0.98	1.25	0.13	-11.51	6.9



IHOP 2002 (dual-antenna config, modes 1,3,4,7) Data (cal: 49.0,50.0)

W2002-05-27-18-20-53 - SPPMAG
 IRIG:1,UTC: 18:20:36.18 to 18:41:23.17, Dur: 1247s
 TimeLngth: 1246.98s, TimeInt: 25ms (39.2pps)
 TimeCor=-13.0s, DSPDif(mn,mx,min):25,20,556
 PPS(min,max,std): 15,42,3.21
 Prof: 213 to 49043, NumProf(t/r): 48830/29369
 ProcTime/Recs: 18:20:36-18:32:58/0-29368
 MxACQtime: 17ms; DRate: 93.8KB/s; Flags: 0, 0, 0
 Pulse: 275ns, IFfilt: 5.0MHz; ppPol: HH
 TxPol: H, PRF: 20 kHz
 Range: Delay 75m, Spacing 15m, Gates 150
 Ave. Pulses: 348, Rng/Prof Aspect@90m/s: 6.5

	Min	Max	Mean	Std	Varc%
hhN(dB)	-66.39	-64.59	-65.47	-78.30	5.2
vvN(dB)	-66.31	-64.48	-65.34	-78.32	5.0
hhL(dB)	-22.85	-9.79	-16.53	-20.43	40.7
vhL(dB)	-22.00	-9.99	-15.98	-19.61	43.3
ppN(m/s)	-15.80	15.80	0.24	9.03	
ppT(m/s)	-0.05	0.05	-0.00	0.01	
vh/hh(dB)	-NaN	14.77	-18.01	-4.10	2462
hnjmp(dB)	-1.03	1.11	0.12	-11.57	6.8
vnjmp(dB)	-0.98	1.25	0.13	-11.51	6.9



IHOP 2002 (dual-antenna config, modes 1,3,4,7) Data (cal: 49.0,50.0)

W2002-05-27-18-20-53 - SPPMAG
 IRIG:1,UTC: 18:20:36.18 to 18:41:23.17, Dur: 1247s
 TimeLngth: 1246.98s, TimeInt: 25ms (39.2pps)
 TimeCor=-13.0s, DSPDif(mn,mx,min):25,20,556
 PPS(min,max,std): 15,42,3.21
 Prof: 213 to 49043, NumProf(t/r): 48830/29369
 ProcTime/Recs: 18:20:36-18:32:58/0-29368
 MxACQtime: 17ms; DRate: 93.8KB/s; Flags: 0, 0, 0
 Pulse: 275ns, IFfilt: 5.0MHz; ppPol: HH
 TxPol: H, PRF: 20 kHz
 Range: Delay 75m, Spacing 15m, Gates 150
 Ave. Pulses: 348, Rng/Prof Aspect@90m/s: 6.5

	Min	Max	Mean	Std	Varc%
hhN(dB)	-66.39	-64.59	-65.47	-78.30	5.2
vvN(dB)	-66.31	-64.48	-65.34	-78.32	5.0
hhL(dB)	-22.85	-9.79	-16.53	-20.43	40.7
vhL(dB)	-22.00	-9.99	-15.98	-19.61	43.3
ppN(m/s)	-15.80	15.80	0.24	9.03	
ppT(m/s)	-0.05	0.05	-0.00	0.01	
vh/hh(dB)	-NaN	14.77	-18.01	-4.10	2462
hnjmp(dB)	-1.03	1.11	0.12	-11.57	6.8
vnjmp(dB)	-0.98	1.25	0.13	-11.51	6.9