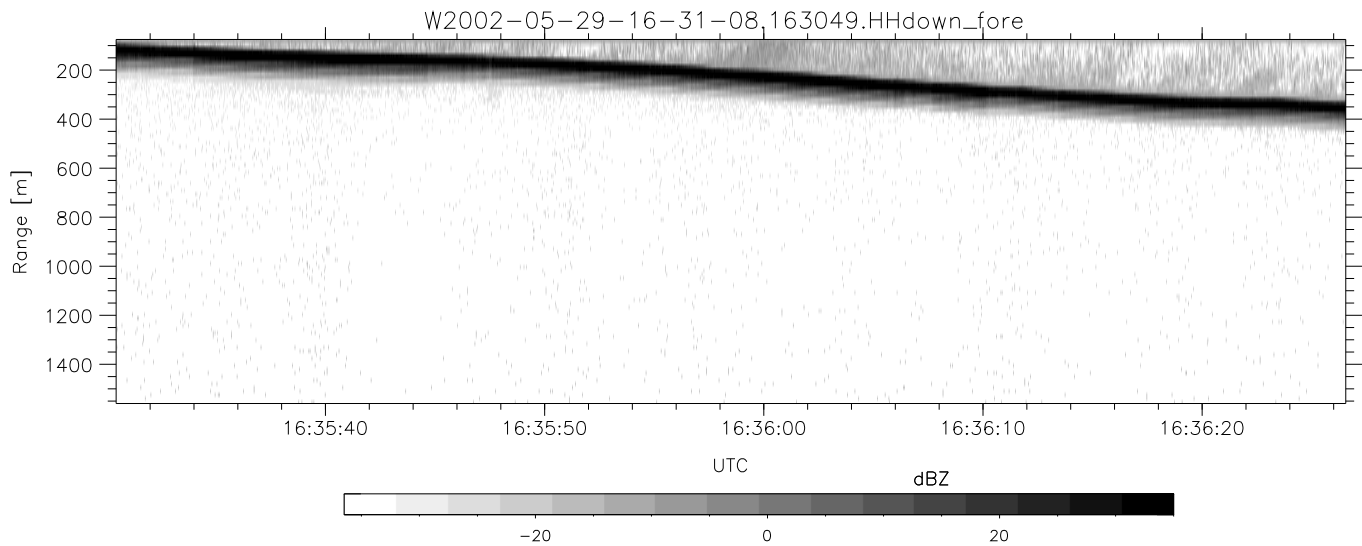
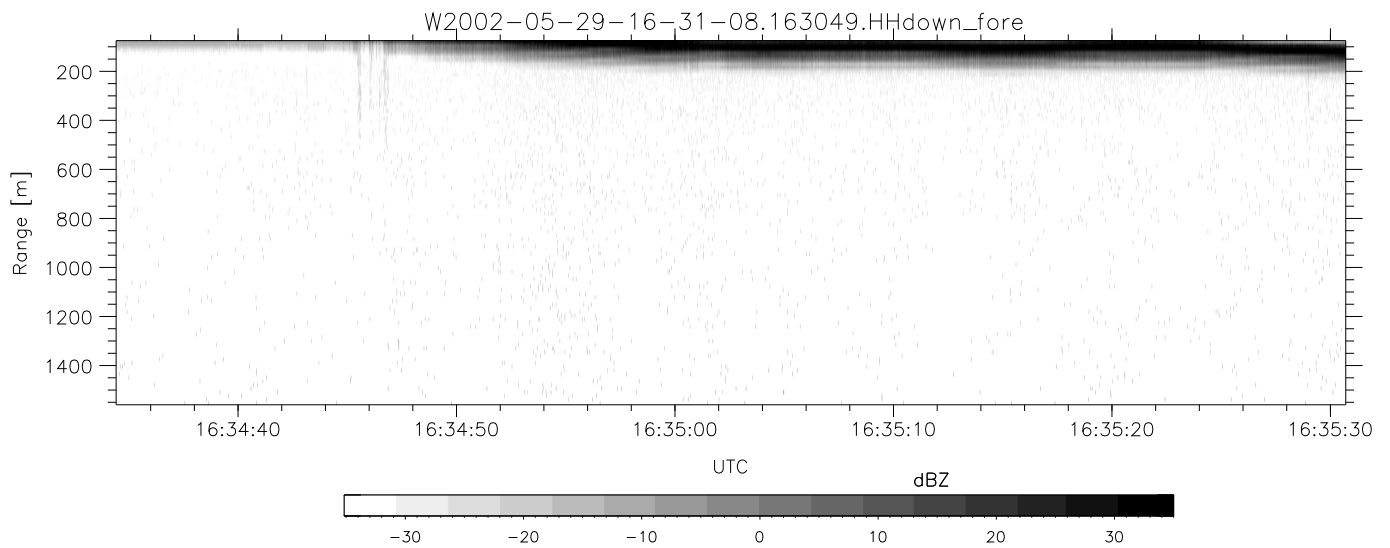
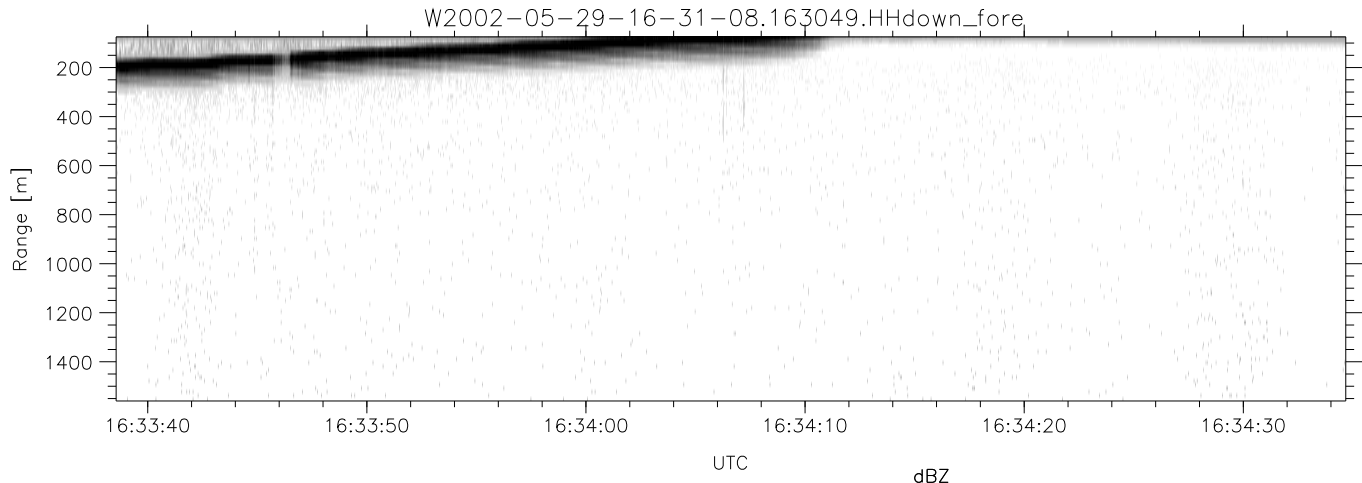


IHOP 2002 (dual-antenna config, modes 1,3,4,7) Data (cal: 55.0,50.0)

W2002-05-29-16-31-08 - PPMAG4
 IRIG:1,UTC: 16:30:49.58 to 16:50:20.68, Dur: 1171s
 TimeLngth: 1171.10s, TimeInt: 28ms (34.7pps)
 TimeCor=-13.0s, DSPDif(mn,mx,min):28,28,349
 PPS(min,max,std): 22,36,2.24
 Prof: 18310 to 58985, NumProf(t/r): 40675/17069
 ProcTime/Recs: 16:30:49-16:39:01/0-17068
 MxACQtime: 33ms; DRate: 194.4KB/s; Flags: 0, 0, 0
 Pulse: 275ns, IFilt: 5.0MHz; ppPol: HH HV VV
 TxPol: HHVV, PRF: 20 10 20 10 kHz
 Range: Delay 75m, Spacing 15m, Gates 100
 Ave. Pulses: 84, Rng/Prof Aspect@90m/s: 5.8

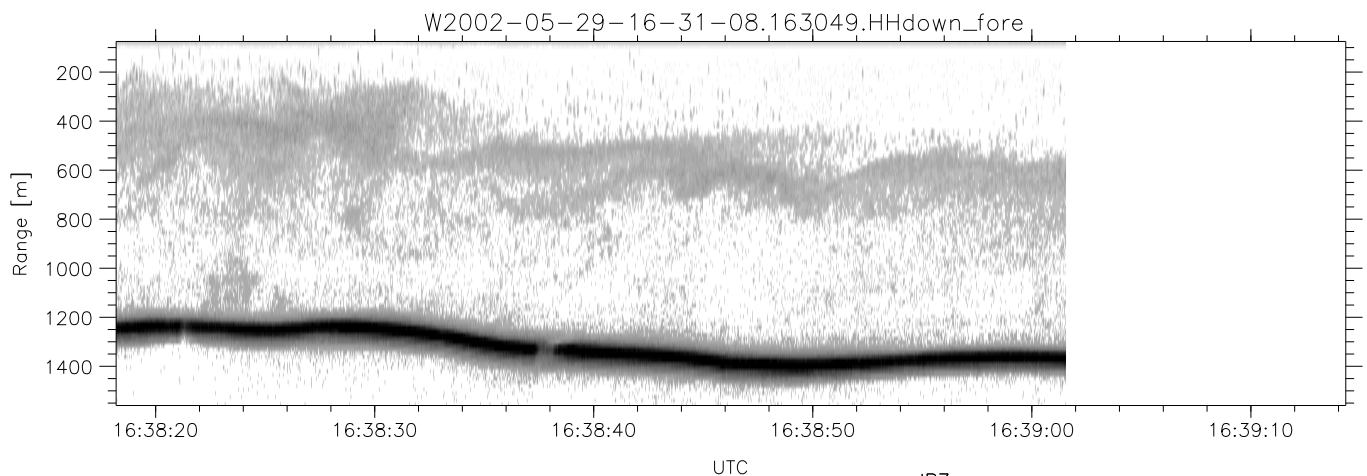
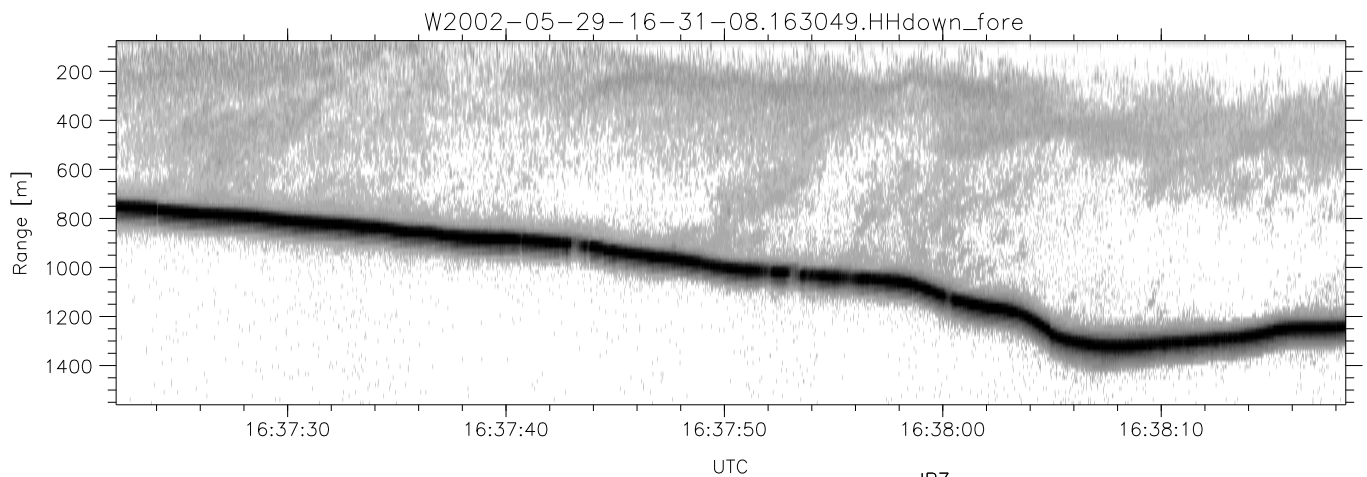
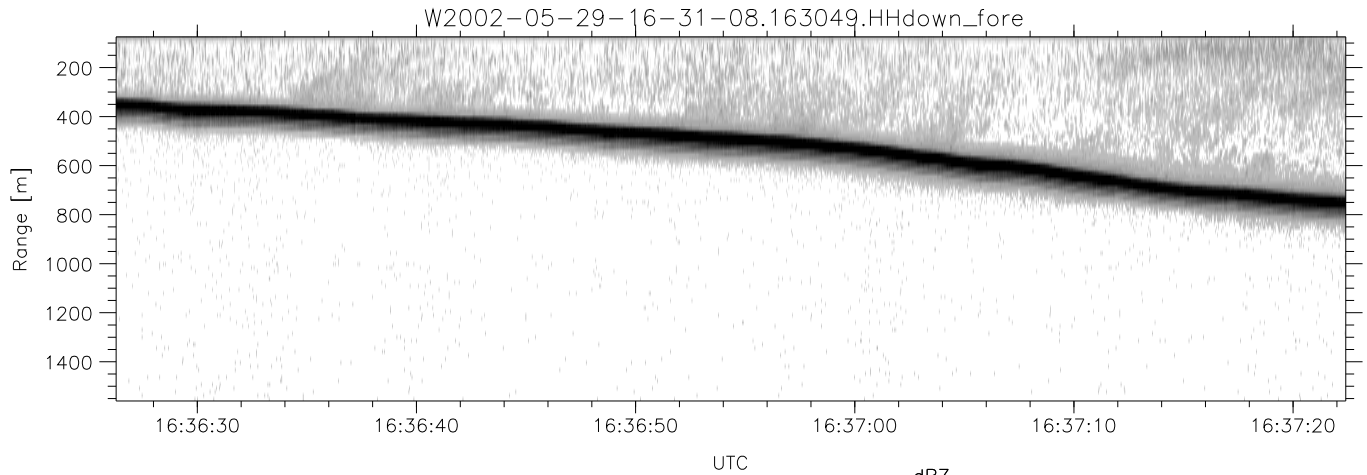
	Min	Max	Mean	Std	Varc%
hhN(dB)	-66.61	-63.17	-64.64	-74.79	9.6
vvN(dB)	-66.67	-63.27	-64.91	-74.97	9.9
hhL(dB)	-18.26	-5.30	-9.58	-12.95	46.1
vvL(dB)	-22.76	-9.34	-13.61	-17.34	42.4
ppN(m/s)	-12.34	12.42	0.01	4.13	
ppT(m/s)	-97.46	98.10	0.07	32.62	
hh/vv(dB)	-NaN	98.84	49.67	73.10	2202
vh/hh(dB)	-NaN	12.88	-19.70	-6.76	1965
hv/vv(dB)	-NaN	-6.15	-35.13	-25.00	1030
hnjmp(dB)	-2.07	2.20	-0.04	-8.72	13.6
vnjmp(dB)	-2.25	2.32	-0.04	-8.63	13.8



IHOP 2002 (dual-antenna config, modes 1,3,4,7) Data (cal: 55.0,50.0)

W2002-05-29-16-31-08 - PPMAG4
 IRIG:1,UTC: 16:30:49.58 to 16:50:20.68, Dur: 1171s
 TimeLngth: 1171.10s, TimeInt: 28ms (34.7pps)
 TimeCor=-13.0s, DSPDif(mn,mx,min):28,28,349
 PPS(min,max,std): 22,36,2.24
 Prof: 18310 to 58985, NumProf(t/r): 40675/17069
 ProcTime/Recs: 16:30:49-16:39:01/0-17068
 MxAcQtime: 33ms; DRate: 194.4KB/s; Flags: 0, 0, 0
 Pulse: 275ns, IFilt: 5.0MHz; ppPol: HH HV VV
 TxPol: HHVV, PRF: 20 10 20 10 kHz
 Range: Delay 75m, Spacing 15m, Gates 100
 Ave. Pulses: 84, Rng/Prof Aspect@90m/s: 5.8

	Min	Max	Mean	Std	Varc%
hhN(dB)	-66.61	-63.17	-64.64	-74.79	9.6
vvN(dB)	-66.67	-63.27	-64.91	-74.97	9.9
hhL(dB)	-18.26	-5.30	-9.58	-12.95	46.1
vvL(dB)	-22.76	-9.34	-13.61	-17.34	42.4
ppN(m/s)	-12.34	12.42	0.01	4.13	
ppT(m/s)	-97.46	98.10	0.07	32.62	
hh/vv(dB)	-NaN	98.84	49.67	73.10	2202
vh/hh(dB)	-NaN	12.88	-19.70	-6.76	1965
hv/vv(dB)	-NaN	-6.15	-35.13	-25.00	1030
hnjmp(dB)	-2.07	2.20	-0.04	-8.72	13.6
vnjmp(dB)	-2.25	2.32	-0.04	-8.63	13.8



IHOP 2002 (dual-antenna config, modes 1,3,4,7) Data (cal: 55.0,50.0)

W2002-05-29-16-31-08 - PPMAG4
 IRIG:1,UTC: 16:30:49.58 to 16:50:20.68, Dur: 1171s
 TimeLngth: 1171.10s, TimeInt: 28ms (34.7pps)
 TimeCor=-13.0s, DSPDif(mn,mx,min):28,28,349
 PPS(min,max,std): 22,36,2.24
 Prof: 18310 to 58985, NumProf(t/r): 40675/17069
 ProcTime/Recs: 16:30:49-16:39:01/0-17068
 MxAcQtime: 33ms; DRate: 194.4KB/s; Flags: 0, 0, 0
 Pulse: 275ns, IFfilt: 5.0MHz; ppPol: HH HV VV
 TxPol: HHVV, PRF: 20 10 20 10 kHz
 Range: Delay 75m, Spacing 15m, Gates 100
 Ave. Pulses: 84, Rng/Prof Aspect@90m/s: 5.8

	Min	Max	Mean	Std	Varc%
hhN (dB)	-66.61	-63.17	-64.64	-74.79	9.6
vvN (dB)	-66.67	-63.27	-64.91	-74.97	9.9
hhL (dB)	-18.26	-5.30	-9.58	-12.95	46.1
vvL (dB)	-22.76	-9.34	-13.61	-17.34	42.4
ppN (m/s)	-12.34	12.42	0.01	4.13	
ppT (m/s)	-97.46	98.10	0.07	32.62	
hh/vv (dB)	-NaN	98.84	49.67	73.10	2202
vh/hh (dB)	-NaN	12.88	-19.70	-6.76	1965
hv/vv (dB)	-NaN	-6.15	-35.13	-25.00	1030
hnjmp (dB)	-2.07	2.20	-0.04	-8.72	13.6
vnjmp (dB)	-2.25	2.32	-0.04	-8.63	13.8