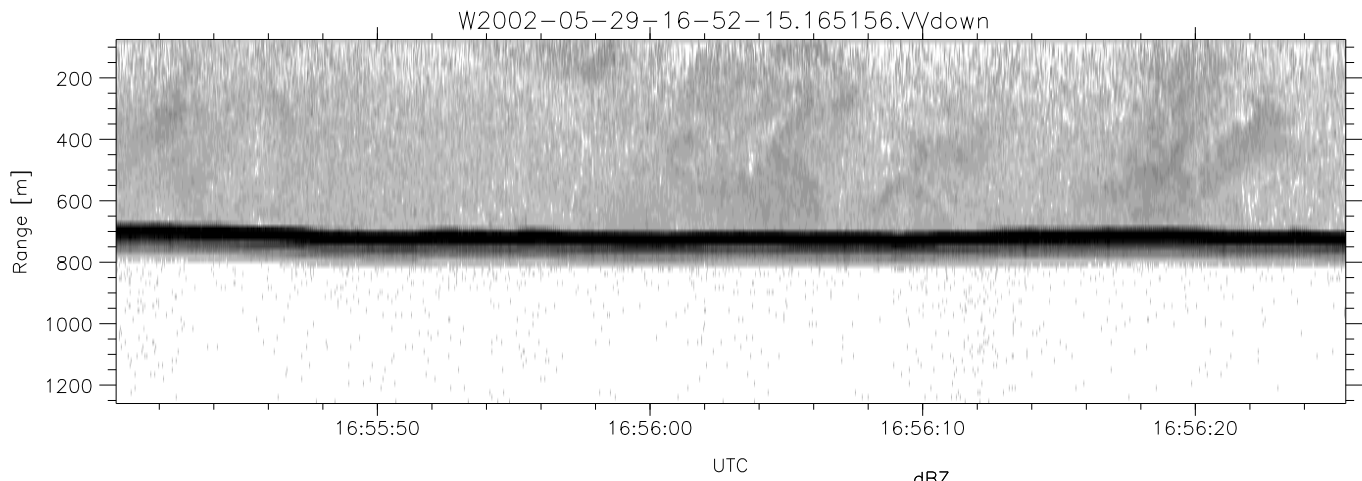
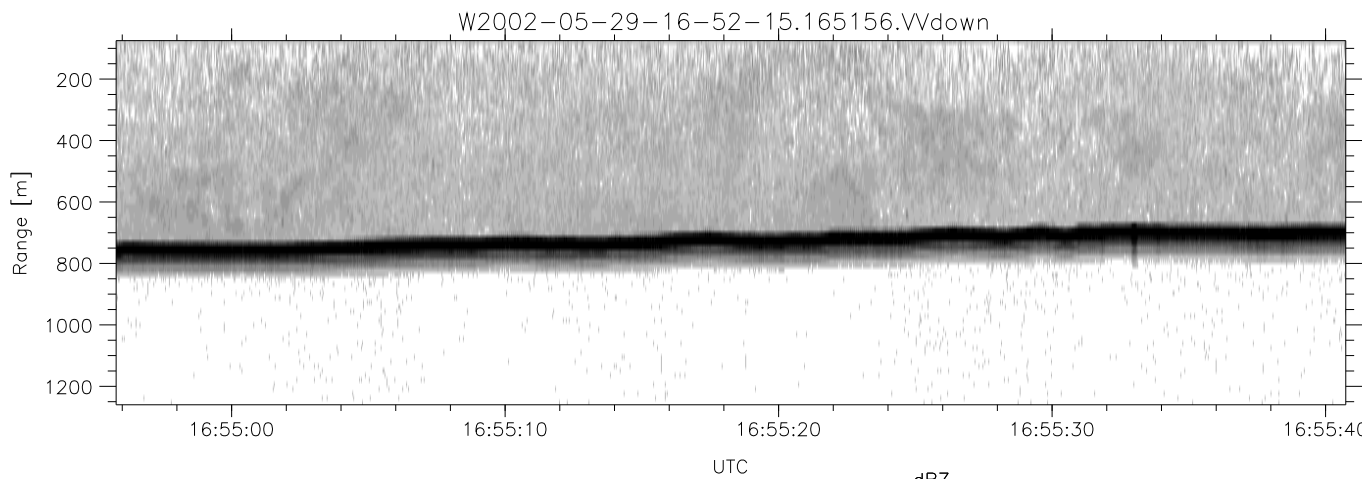
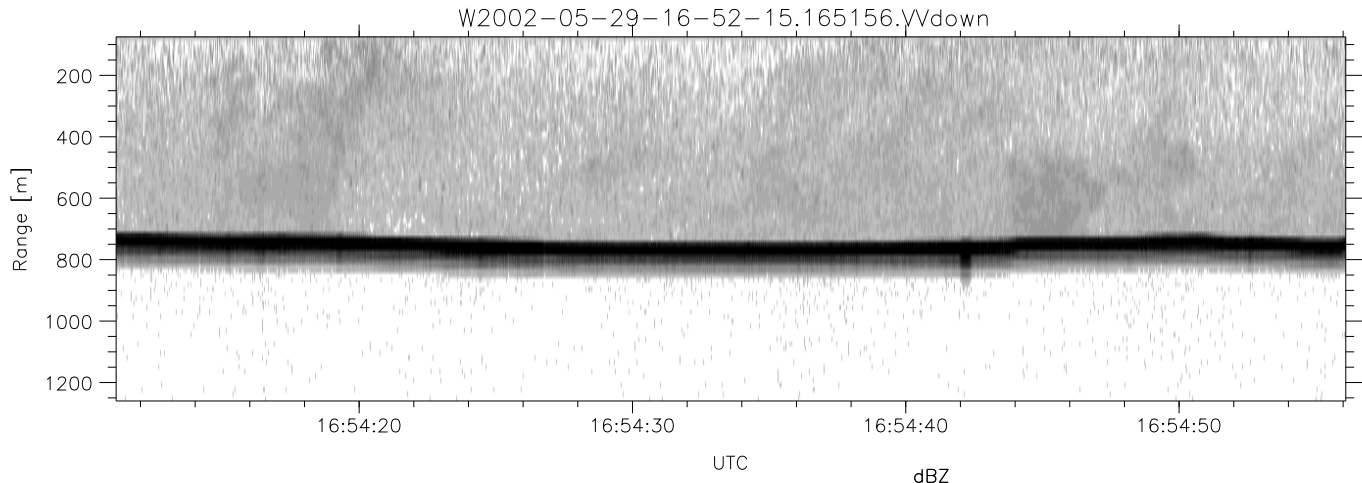


IHOP 2002 (dual-antenna config, modes 1,3,4,7) Data (cal: 49.0,50.0)

W2002-05-29-16-52-15 - PPMAG4  
 IRIG:1,UTC: 16:51:56.94 to 17:48:51.00, Dur: 3415s  
 TimeLngth: 3415.06s, TimeInt: 35ms (27.9pps)  
 TimeCor=-13.0s, DSPDif(mn,mx,min):35,35,394  
 PPS(min,max,std): 19,29,1.25  
 Prof: 375 to 95530, NumProf(t/r): 95155/10844  
 ProcTime/Recs: 16:51:56-16:58:26/0-10843  
 MxACQtime: 43ms; DRate: 125.5KB/s; Flags: 0, 0, 0  
 Pulse: 275ns, IFfilt: 5.0MHz; ppPol: HH HV VV  
 TxPol: HHVV, PRF: 20 10 20 10 kHz  
 Range: Delay 75m, Spacing 15m, Gates 80  
 Ave. Pulses: 108, Rng/Prof Aspect@90m/s: 4.6

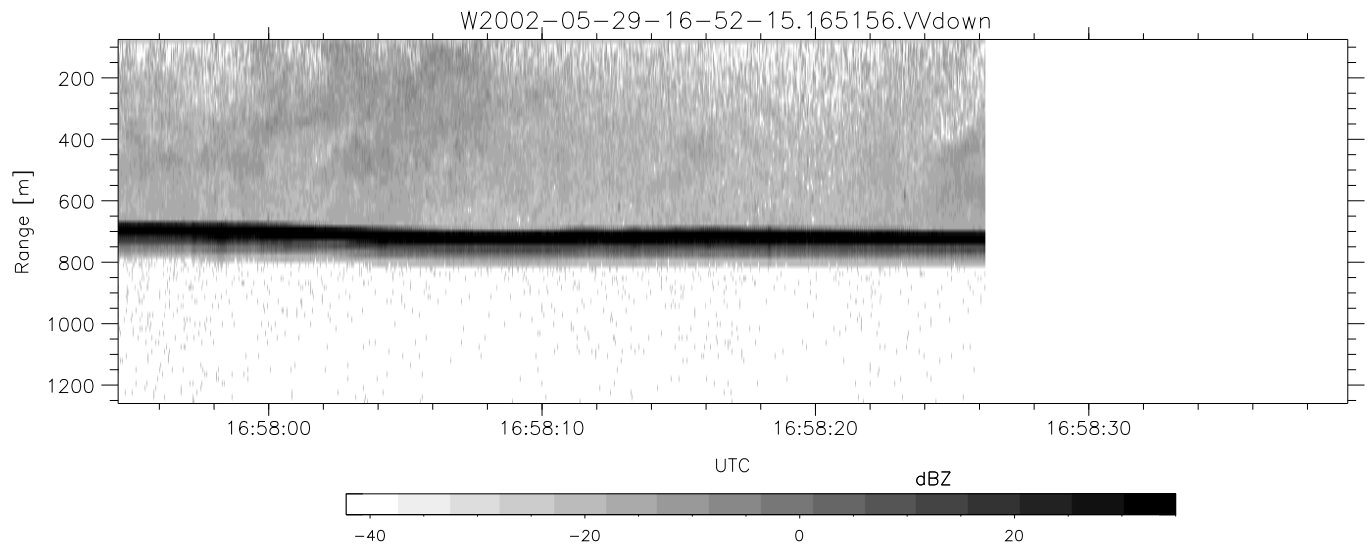
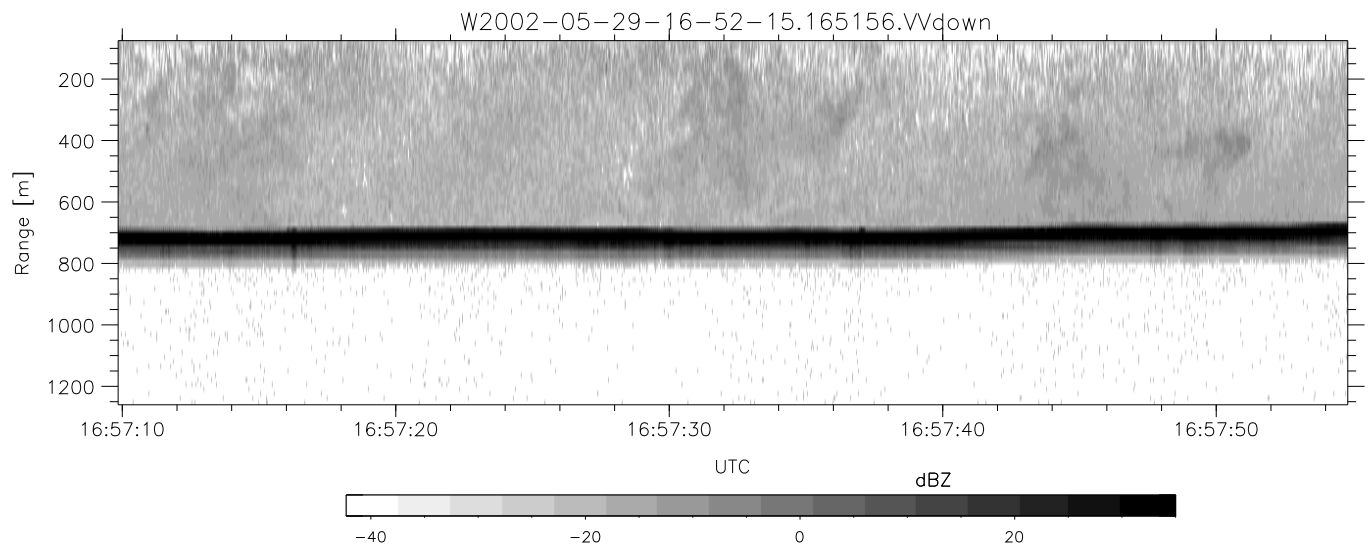
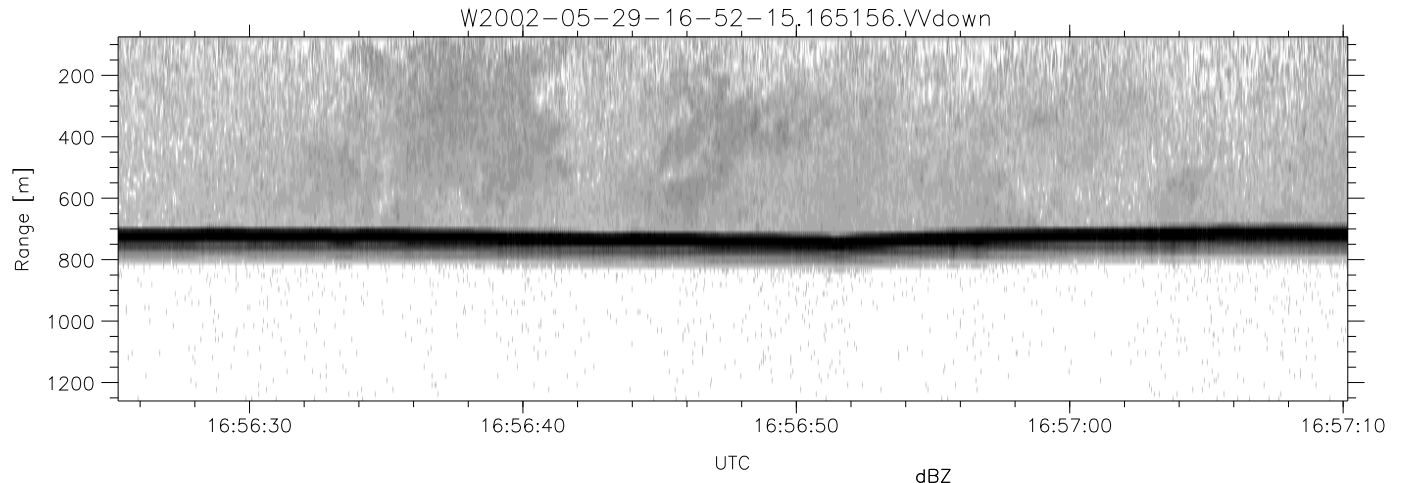
	Min	Max	Mean	Std	Varc%
hhN (dB)	-66.49	-63.52	-64.92	-75.63	8.5
vvN (dB)	-66.23	-63.43	-64.72	-75.36	8.6
hhL (dB)	-11.71	-6.54	-8.94	-16.61	17.1
vvL (dB)	-19.31	-10.82	-13.22	-19.40	24.1
ppN (m/s)	-12.49	12.12	-0.01	4.15	
ppT (m/s)	-98.66	95.76	-0.05	32.81	
hh/vv (dB)	-NaN	51.50	11.79	32.60	1204
vh/hh (dB)	-NaN	-29.04	-33.96	-35.28	73.8
hv/vv (dB)	-NaN	-34.05	-52.33	-44.98	544.1
hnjmp (dB)	-1.95	2.03	0.13	-9.14	11.8
vnjmp (dB)	-1.60	2.06	0.13	-9.00	12.2



IHOP 2002 (dual-antenna config, modes 1,3,4,7) Data (cal: 49.0,50.0)

W2002-05-29-16-52-15 - PPMAG4  
 IRIG:1,UTC: 16:51:56.94 to 17:48:51.00, Dur: 3415s  
 TimeLngth: 3415.06s, TimeInt: 35ms (27.9pps)  
 TimeCor=-13.0s, DSPDif(mn,mx,min):35,35,394  
 PPS(min,max,std): 19,29,1.25  
 Prof: 375 to 95530, NumProf(t/r): 95155/10844  
 ProcTime/Recs: 16:51:56-16:58:26/0-10843  
 MxACQtime: 43ms; DRate: 125.5KB/s; Flags: 0, 0, 0  
 Pulse: 275ns, IFfilt: 5.0MHz; ppPol: HH HV VV  
 TxPol: HHVV, PRF: 20 10 20 10 kHz  
 Range: Delay 75m, Spacing 15m, Gates 80  
 Ave. Pulses: 108, Rng/Prof Aspect@90m/s: 4.6

	Min	Max	Mean	Std	Varc%
hhN(dB)	-66.49	-63.52	-64.92	-75.63	8.5
vvN(dB)	-66.23	-63.43	-64.72	-75.36	8.6
hhL(dB)	-11.71	-6.54	-8.94	-16.61	17.1
vvL(dB)	-19.31	-10.82	-13.22	-19.40	24.1
ppN(m/s)	-12.49	12.12	-0.01	4.15	
ppT(m/s)	-98.66	95.76	-0.05	32.81	
hh/vv(dB)	-NaN	51.50	11.79	32.60	1204
vh/hh(dB)	-NaN	-29.04	-33.96	-35.28	73.8
hv/vv(dB)	-NaN	-34.05	-52.33	-44.98	544.
hnjmp(dB)	-1.95	2.03	0.13	-9.14	11.8
vnjmp(dB)	-1.60	2.06	0.13	-9.00	12.2



IHOP 2002 (dual-antenna config, modes 1,3,4,7) Data (cal: 49.0,50.0)

W2002-05-29-16-52-15 - PPMAG4  
 IRIG:1,UTC: 16:51:56.94 to 17:48:51.00, Dur: 3415s  
 TimeLngth: 3415.06s, TimeInt: 35ms (27.9pps)  
 TimeCor=-13.0s, DSPDif(mn,mx,min):35,35,394  
 PPS(min,max,std): 19,29,1.25  
 Prof: 375 to 95530, NumProf(t/r): 95155/10844  
 ProcTime/Recs: 16:51:56-16:58:26/0-10843  
 MxACQtime: 43ms; DRate: 125.5KB/s; Flags: 0, 0, 0  
 Pulse: 275ns, IFfilt: 5.0MHz; ppPol: HH HV VV  
 TxPol: HHVV, PRF: 20 10 20 10 kHz  
 Range: Delay 75m, Spacing 15m, Gates 80  
 Ave. Pulses: 108, Rng/Prof Aspect@90m/s: 4.6

	Min	Max	Mean	Std	Varc%
hhN(dB)	-66.49	-63.52	-64.92	-75.63	8.5
vvN(dB)	-66.23	-63.43	-64.72	-75.36	8.6
hhL(dB)	-11.71	-6.54	-8.94	-16.61	17.1
vvL(dB)	-19.31	-10.82	-13.22	-19.40	24.1
ppN(m/s)	-12.49	12.12	-0.01	4.15	
ppT(m/s)	-98.66	95.76	-0.05	32.81	
hh/vv(dB)	-NaN	51.50	11.79	32.60	1204
vh/hh(dB)	-NaN	-29.04	-33.96	-35.28	73.8
hv/vv(dB)	-NaN	-34.05	-52.33	-44.98	544.
hnjmp(dB)	-1.95	2.03	0.13	-9.14	11.8
vnjmp(dB)	-1.60	2.06	0.13	-9.00	12.2