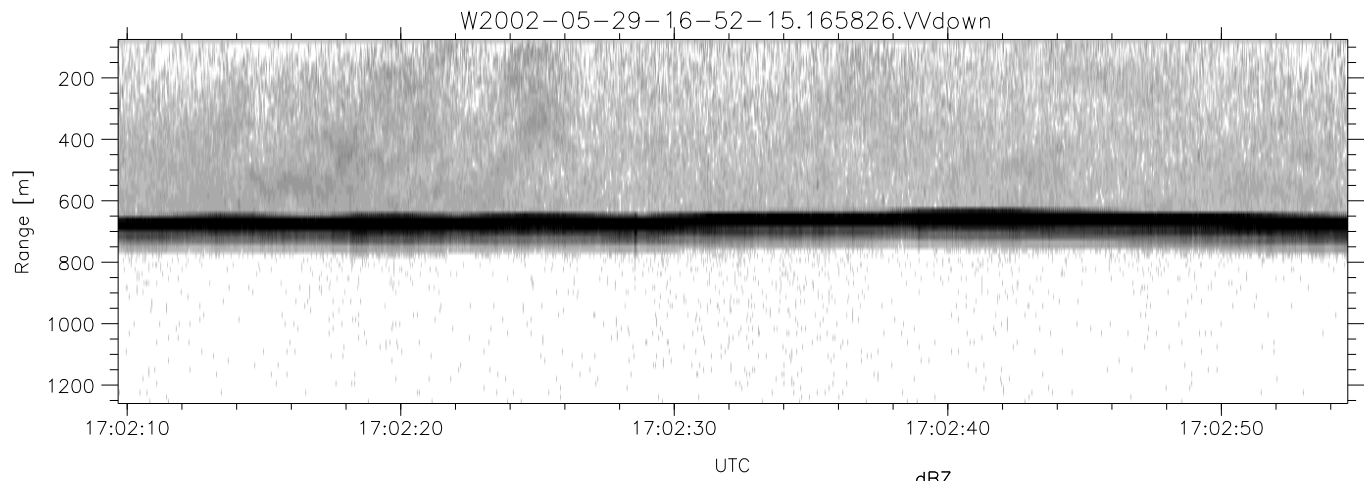
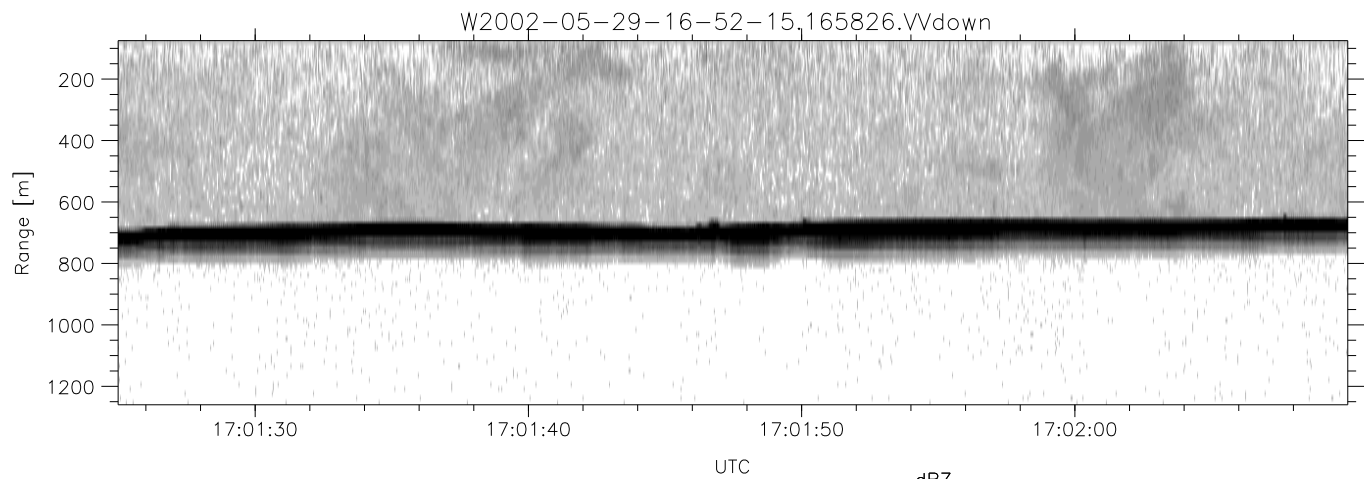
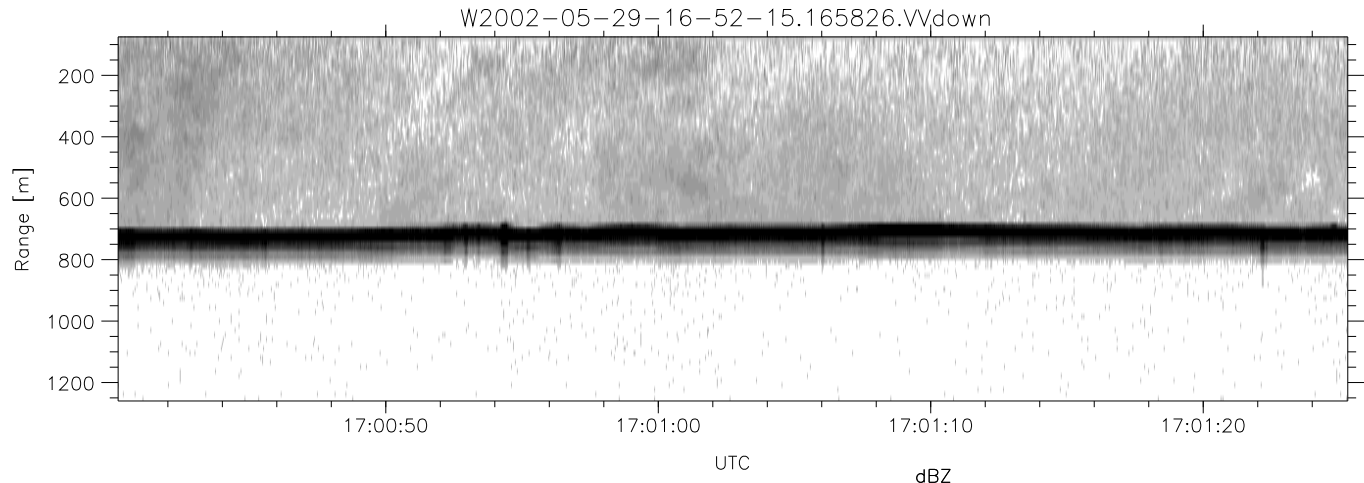


IHOP 2002 (dual-antenna config, modes 1,3,4,7) Data (cal: 49.0,50.0)

W2002-05-29-16-52-15 - PPMAG4
 IRIG:1,UTC: 16:51:56.94 to 17:48:51.00, Dur: 3415s
 TimeLngth: 3415.06s, TimeInt: 35ms (27.9pps)
 TimeCor=-13.0s, DSPDif(mn,mx,min):35,35,196
 PPS(min,max,std): 23,29,1.19
 Prof: 375 to 95530, NumProf(t/r): 95155/10844
 ProcTime/Recs: 16:58:26-17:04:55/10844-21687
 MxAcQtime: 43ms; DRate: 125.5KB/s; Flags: 0, 0, 0
 Pulse: 275ns, IFfilt: 5.0MHz; ppPol: HH HV VV
 TxPol: HHVV, PRF: 20 10 20 10 kHz
 Range: Delay 75m, Spacing 15m, Gates 80
 Ave. Pulses: 108, Rng/Prof Aspect@90m/s: 4.6

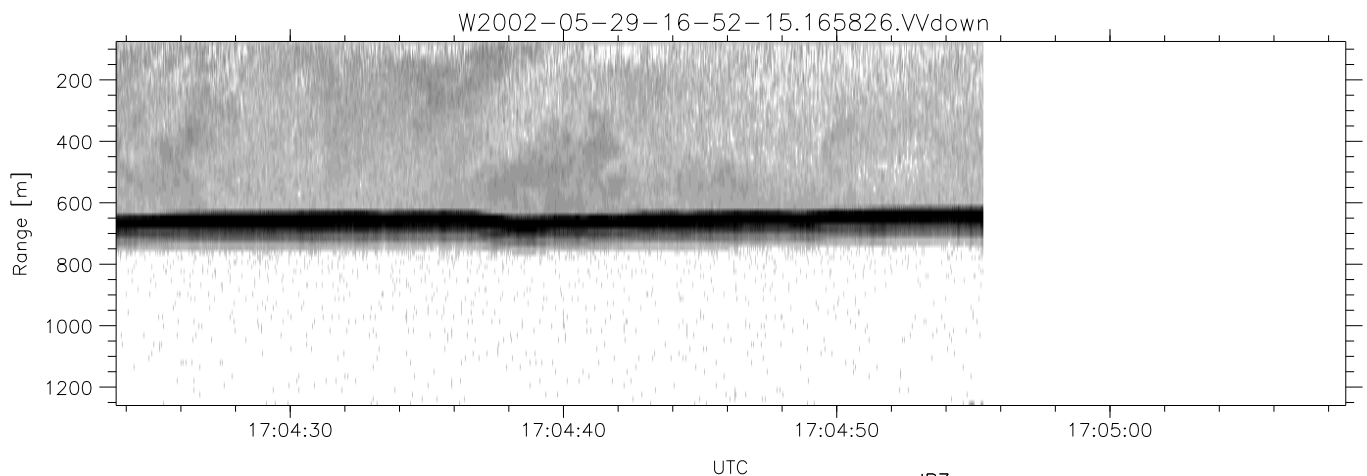
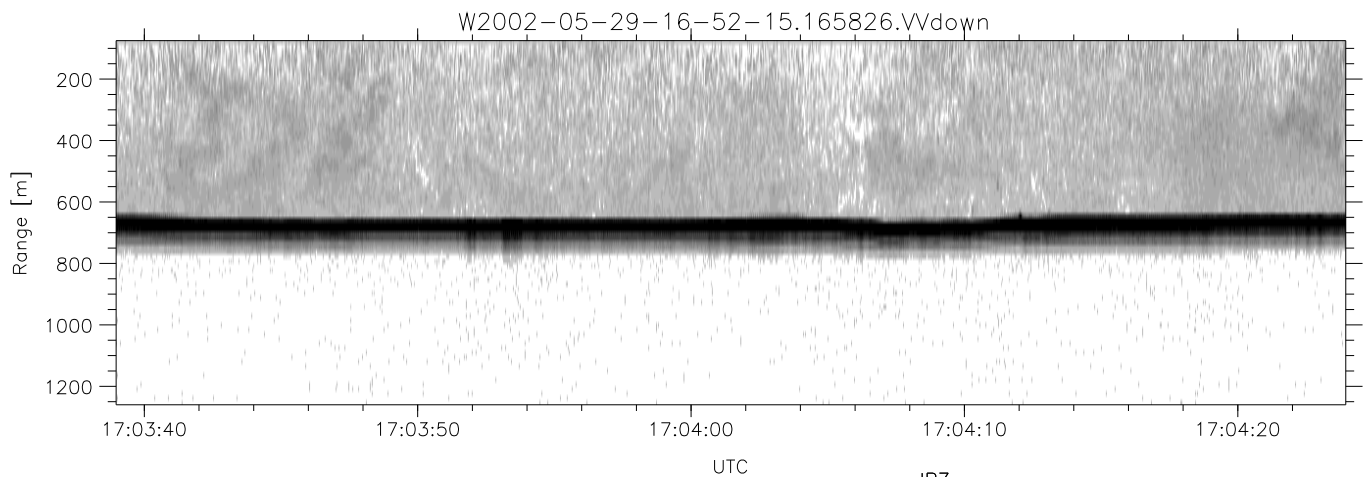
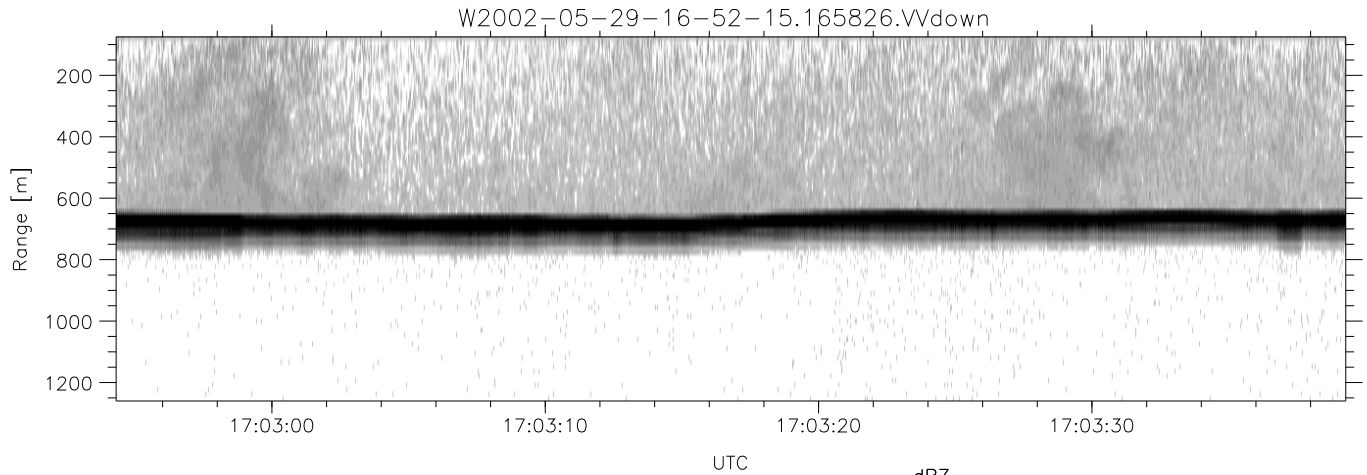
	Min	Max	Mean	Std	Varc%
hhN(dB)	-66.40	-63.50	-64.86	-75.54	8.5
vvN(dB)	-65.99	-63.27	-64.63	-75.30	8.6
hhL(dB)	-12.43	-7.53	-9.73	-17.36	17.3
vvL(dB)	-18.21	-11.16	-12.93	-20.85	16.1
ppN(m/s)	-12.57	12.67	0.09	4.16	
ppT(m/s)	-99.32	100.11	0.70	32.86	
hh/vv(dB)	-NaN	48.79	12.18	26.45	2675
vh/hh(dB)	-NaN	-28.25	-33.40	-34.64	75.2
hv/vv(dB)	-NaN	-34.43	-52.97	-45.62	543.
hnjmp(dB)	-1.61	2.01	0.14	-9.05	12.0
vnjmp(dB)	-1.60	2.01	0.13	-9.06	12.1



IHOP 2002 (dual-antenna config, modes 1,3,4,7) Data (cal: 49.0,50.0)

W2002-05-29-16-52-15 - PPMAG4
 IRIG:1,UTC: 16:51:56.94 to 17:48:51.00, Dur: 3415s
 TimeLngth: 3415.06s, TimeInt: 35ms (27.9pps)
 TimeCor=-13.0s, DSPDif(mn,mx,min):35,35,196
 PPS(min,max,std): 23,29,1.19
 Prof: 375 to 95530, NumProf(t/r): 95155/10844
 ProcTime/Recs: 16:58:26-17:04:55/10844-21687
 MxAcQtime: 43ms; DRate: 125.5KB/s; Flags: 0, 0, 0
 Pulse: 275ns, IFfilt: 5.0MHz; ppPol: HH HV VV
 TxPol: HHVV, PRF: 20 10 20 10 kHz
 Range: Delay 75m, Spacing 15m, Gates 80
 Ave. Pulses: 108, Rng/Prof Aspect@90m/s: 4.6

	Min	Max	Mean	Std	Varc%
hhN(dB)	-66.40	-63.50	-64.86	-75.54	8.5
vvN(dB)	-65.99	-63.27	-64.63	-75.30	8.6
hhL(dB)	-12.43	-7.53	-9.73	-17.36	17.3
vvL(dB)	-18.21	-11.16	-12.93	-20.85	16.1
ppN(m/s)	-12.57	12.67	0.09	4.16	
ppT(m/s)	-99.32	100.11	0.70	32.86	
hh/vv(dB)	-NaN	48.79	12.18	26.45	2675
vh/hh(dB)	-NaN	-28.25	-33.40	-34.64	75.2
hv/vv(dB)	-NaN	-34.43	-52.97	-45.62	543.
hnjmp(dB)	-1.61	2.01	0.14	-9.05	12.0
vnjmp(dB)	-1.60	2.01	0.13	-9.06	12.1



IHOP 2002 (dual-antenna config, modes 1,3,4,7) Data (cal: 49.0,50.0)

W2002-05-29-16-52-15 - PPMAG4
 IRIG:1,UTC: 16:51:56.94 to 17:48:51.00, Dur: 3415s
 TimeLngth: 3415.06s, TimeInt: 35ms (27.9pps)
 TimeCor=-13.0s, DSPDif(mn,mx,min):35,35,196
 PPS(min,max,std): 23,29,1.19
 Prof: 375 to 95530, NumProf(t/r): 95155/10844
 ProcTime/Recs: 16:58:26-17:04:55/10844-21687
 MxACQtime: 43ms; DRate: 125.5KB/s; Flags: 0, 0, 0
 Pulse: 275ns, IFfilt: 5.0MHz; ppPol: HH HV VV
 TxPol: HHVV, PRF: 20 10 20 10 kHz
 Range: Delay 75m, Spacing 15m, Gates 80
 Ave. Pulses: 108, Rng/Prof Aspect@90m/s: 4.6

	Min	Max	Mean	Std	Varc%
hhN(dB)	-66.40	-63.50	-64.86	-75.54	8.5
vvN(dB)	-65.99	-63.27	-64.63	-75.30	8.6
hhL(dB)	-12.43	-7.53	-9.73	-17.36	17.3
vvL(dB)	-18.21	-11.16	-12.93	-20.85	16.1
ppN(m/s)	-12.57	12.67	0.09	4.16	
ppT(m/s)	-99.32	100.11	0.70	32.86	
hh/vv(dB)	-NaN	48.79	12.18	26.45	2675
vh/hh(dB)	-NaN	-28.25	-33.40	-34.64	75.2
hv/vv(dB)	-NaN	-34.43	-52.97	-45.62	543.
hnjmp(dB)	-1.61	2.01	0.14	-9.05	12.0
vnjmp(dB)	-1.60	2.01	0.13	-9.06	12.1