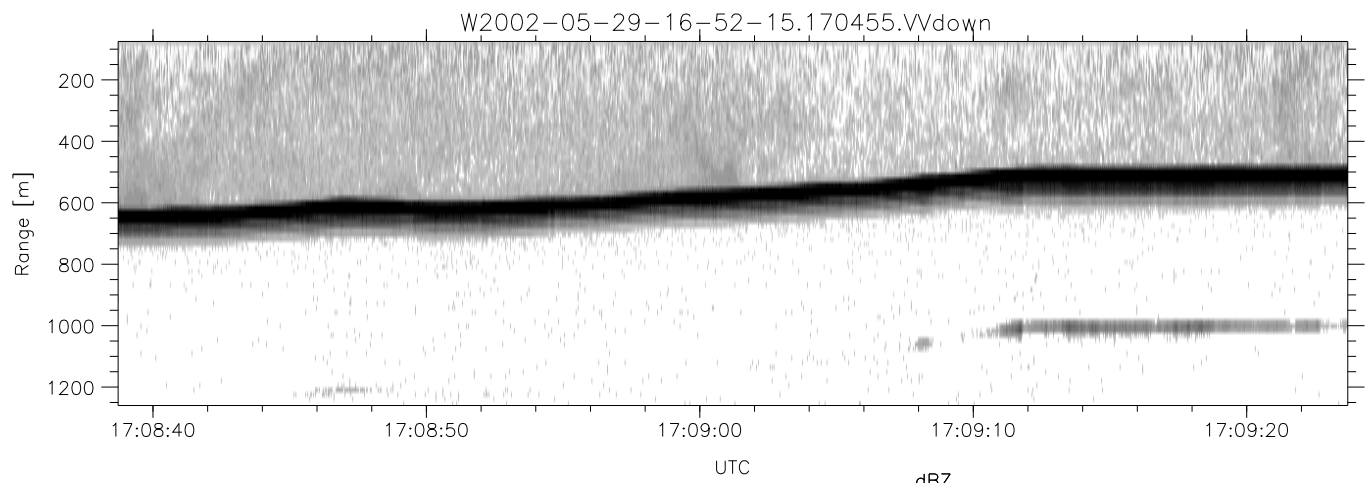
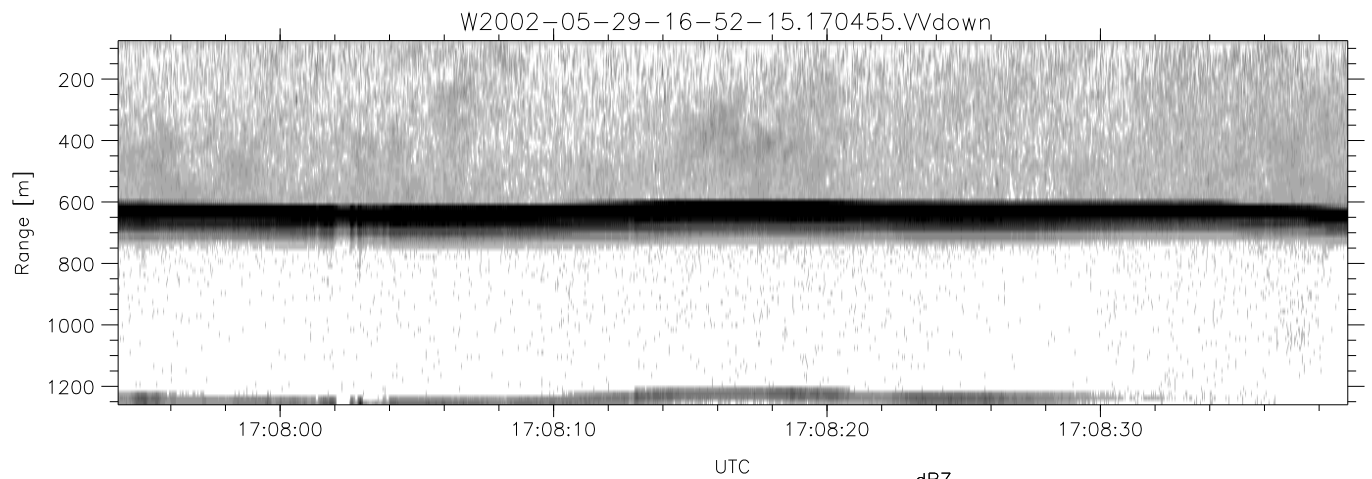
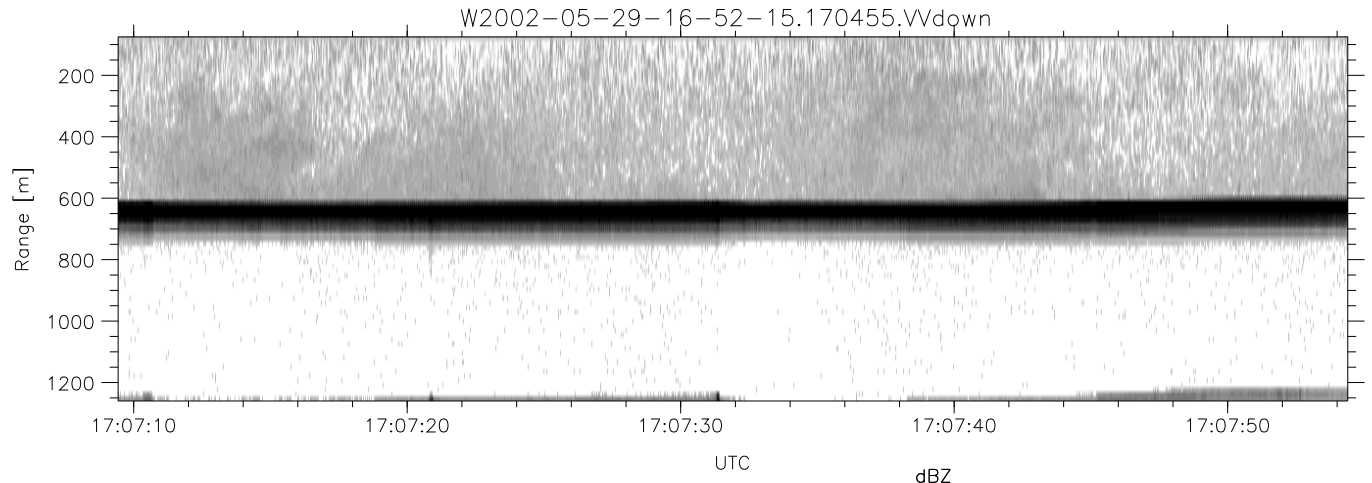


IHOP 2002 (dual-antenna config, modes 1,3,4,7) Data (cal: 49.0,50.0)

W2002-05-29-16-52-15 - PPMAG4  
 IRIG:1,UTC: 16:51:56.94 to 17:48:51.00, Dur: 3415s  
 TimeLngth: 3415.06s, TimeInt: 35ms (27.9pps)  
 TimeCor=-13.0s, DSPDif(mn,mx,min):35,35,196  
 PPS(min,max,std): 23,29,1.19  
 Prof: 375 to 95530, NumProf(t/r): 95155/10844  
 ProcTime/Recs: 17:04:55-17:11:24/21688-32531  
 MxACQtime: 43ms; DRate: 125.5KB/s; Flags: 0, 0, 0  
 Pulse: 275ns, IFfilt: 5.0MHz; ppPol: HH HV VV  
 TxPol: HHVV, PRF: 20 10 20 10 kHz  
 Range: Delay 75m, Spacing 15m, Gates 80  
 Ave. Pulses: 108, Rng/Prof Aspect@90m/s: 4.6

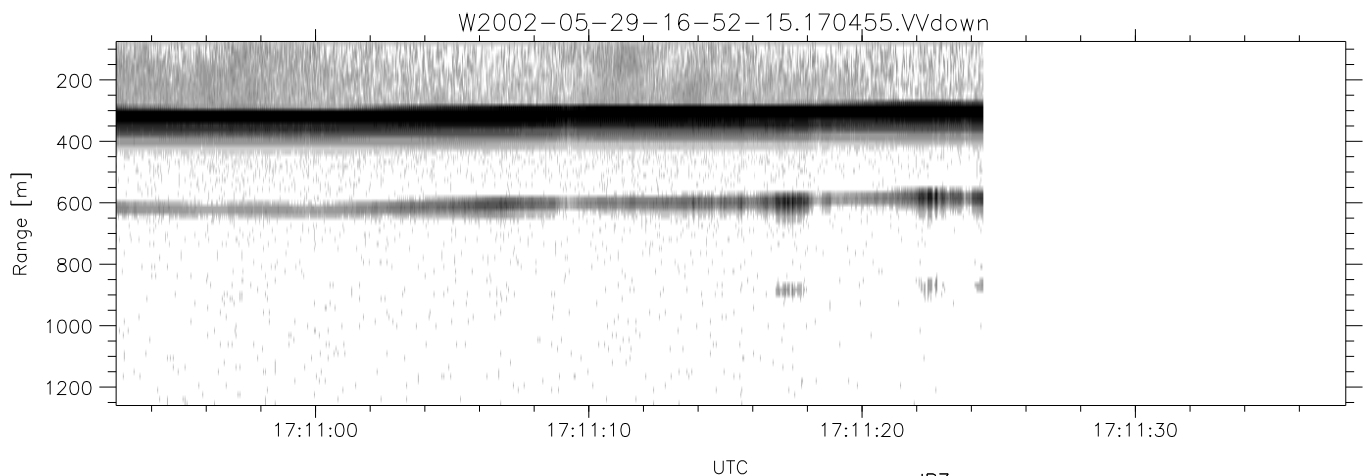
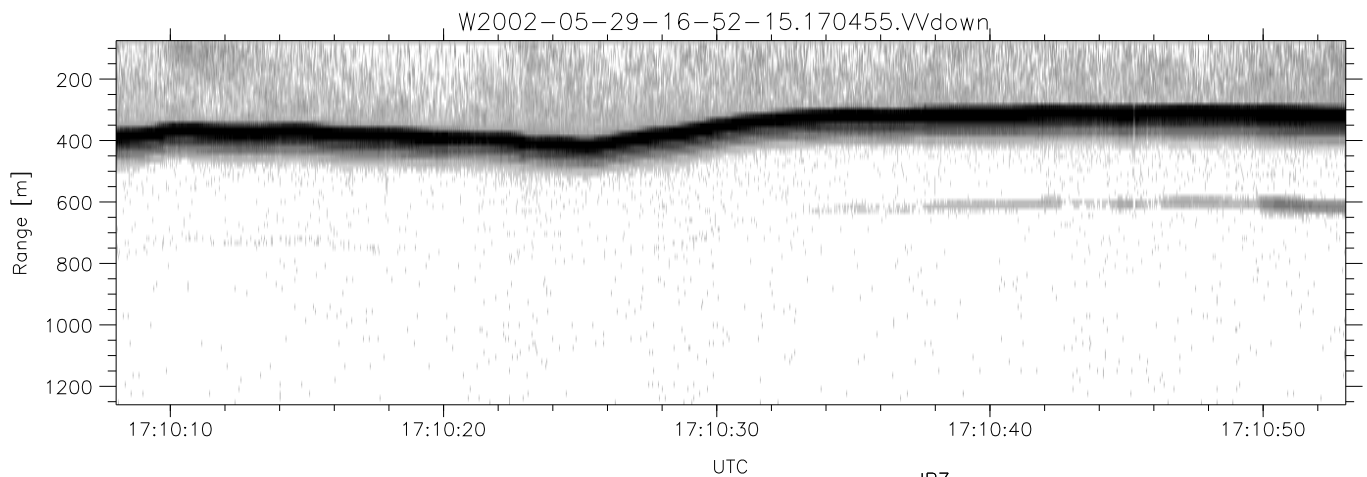
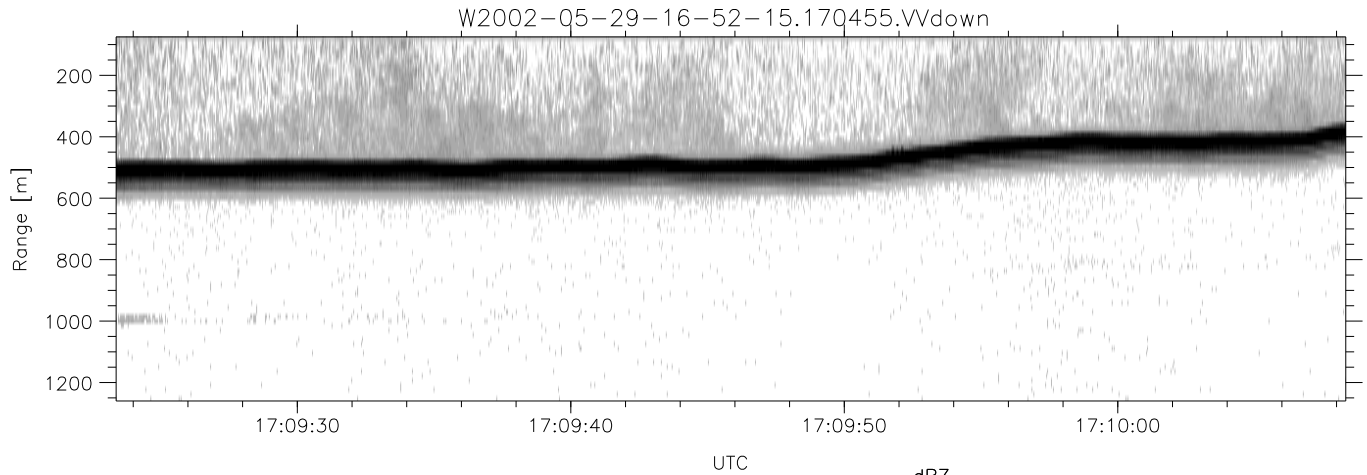
	Min	Max	Mean	Std	Varc%
hhN(dB)	-66.36	-63.48	-64.85	-75.52	8.6
vvN(dB)	-66.18	-63.31	-64.61	-75.22	8.7
hhL(dB)	-12.61	-7.28	-9.78	-15.74	25.4
vvL(dB)	-16.47	-11.36	-13.32	-20.07	21.1
ppN(m/s)	-12.49	12.54	-0.02	4.17	
ppT(m/s)	-98.69	99.05	-0.17	32.92	
hh/vv(dB)	-NaN	47.29	-NaN	38.37	-361
vh/hh(dB)	-NaN	-28.59	-33.24	-34.83	69.4
hv/vv(dB)	-NaN	-34.51	-51.77	-46.15	365.
hnjmp(dB)	-1.65	2.20	0.15	-9.04	12.1
vnjmp(dB)	-1.91	1.98	0.15	-8.97	12.3



IHOP 2002 (dual-antenna config, modes 1,3,4,7) Data (cal: 49.0,50.0)

W2002-05-29-16-52-15 - PPMAG4  
 IRIG:1,UTC: 16:51:56.94 to 17:48:51.00, Dur: 3415s  
 TimeLngth: 3415.06s, TimeInt: 35ms (27.9pps)  
 TimeCor=-13.0s, DSPDif(mn,mx,min):35,35,196  
 PPS(min,max,std): 23,29,1.19  
 Prof: 375 to 95530, NumProf(t/r): 95155/10844  
 ProcTime/Recs: 17:04:55-17:11:24/21688-32531  
 MxACQtime: 43ms; DRate: 125.5KB/s; Flags: 0, 0, 0  
 Pulse: 275ns, IFfilt: 5.0MHz; ppPol: HH HV VV  
 TxPol: HHVV, PRF: 20 10 20 10 kHz  
 Range: Delay 75m, Spacing 15m, Gates 80  
 Ave. Pulses: 108, Rng/Prof Aspect@90m/s: 4.6

	Min	Max	Mean	Std	Varc%
hhN(dB)	-66.36	-63.48	-64.85	-75.52	8.6
vvN(dB)	-66.18	-63.31	-64.61	-75.22	8.7
hhL(dB)	-12.61	-7.28	-9.78	-15.74	25.4
vvL(dB)	-16.47	-11.36	-13.32	-20.07	21.1
ppN(m/s)	-12.49	12.54	-0.02	4.17	
ppT(m/s)	-98.69	99.05	-0.17	32.92	
hh/vv(dB)	-NaN	47.29	-NaN	38.37	-361
vh/hh(dB)	-NaN	-28.59	-33.24	-34.83	69.4
hv/vv(dB)	-NaN	-34.51	-51.77	-46.15	365.
hnjmp(dB)	-1.65	2.20	0.15	-9.04	12.1
vnjmp(dB)	-1.91	1.98	0.15	-8.97	12.3



IHOP 2002 (dual-antenna config, modes 1,3,4,7) Data (cal: 49.0,50.0)

W2002-05-29-16-52-15 - PPMAG4  
 IRIG:1,UTC: 16:51:56.94 to 17:48:51.00, Dur: 3415s  
 TimeLngth: 3415.06s, TimeInt: 35ms (27.9pps)  
 TimeCor=-13.0s, DSPDif(mn,mx,min):35,35,196  
 PPS(min,max,std): 23,29,1.19  
 Prof: 375 to 95530, NumProf(t/r): 95155/10844  
 ProcTime/Recs: 17:04:55-17:11:24/21688-32531  
 MxACQtime: 43ms; DRate: 125.5KB/s; Flags: 0, 0, 0  
 Pulse: 275ns, IFfilt: 5.0MHz; ppPol: HH HV VV  
 TxPol: HHVV, PRF: 20 10 20 10 kHz  
 Range: Delay 75m, Spacing 15m, Gates 80  
 Ave. Pulses: 108, Rng/Prof Aspect@90m/s: 4.6

	Min	Max	Mean	Std	Varc%
hhN(dB)	-66.36	-63.48	-64.85	-75.52	8.6
vvN(dB)	-66.18	-63.31	-64.61	-75.22	8.7
hhL(dB)	-12.61	-7.28	-9.78	-15.74	25.4
vvL(dB)	-16.47	-11.36	-13.32	-20.07	21.1
ppN(m/s)	-12.49	12.54	-0.02	4.17	
ppT(m/s)	-98.69	99.05	-0.17	32.92	
hh/vv(dB)	-NaN	47.29	-NaN	38.37	-361
vh/hh(dB)	-NaN	-28.59	-33.24	-34.83	69.4
hv/vv(dB)	-NaN	-34.51	-51.77	-46.15	365.
hnjmp(dB)	-1.65	2.20	0.15	-9.04	12.1
vnjmp(dB)	-1.91	1.98	0.15	-8.97	12.3