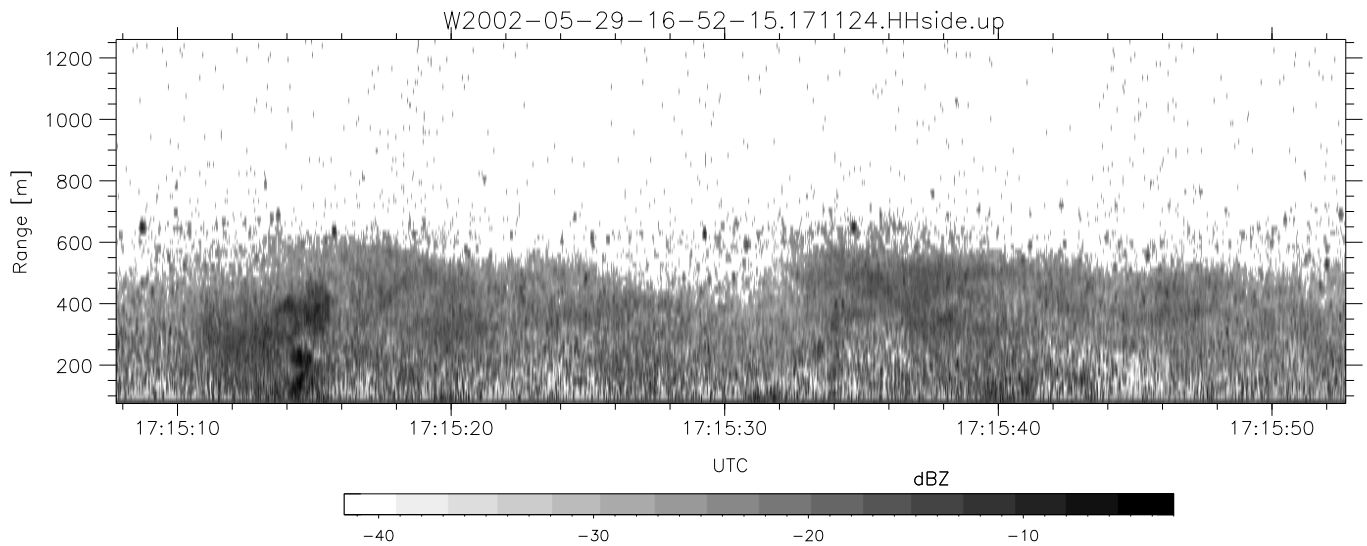
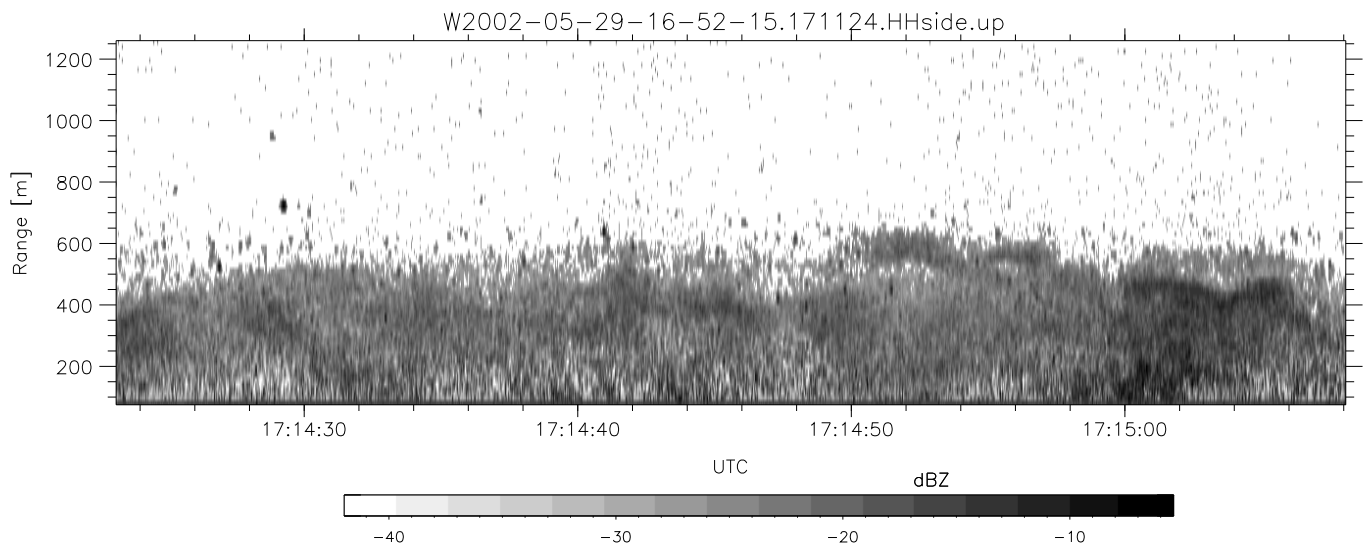
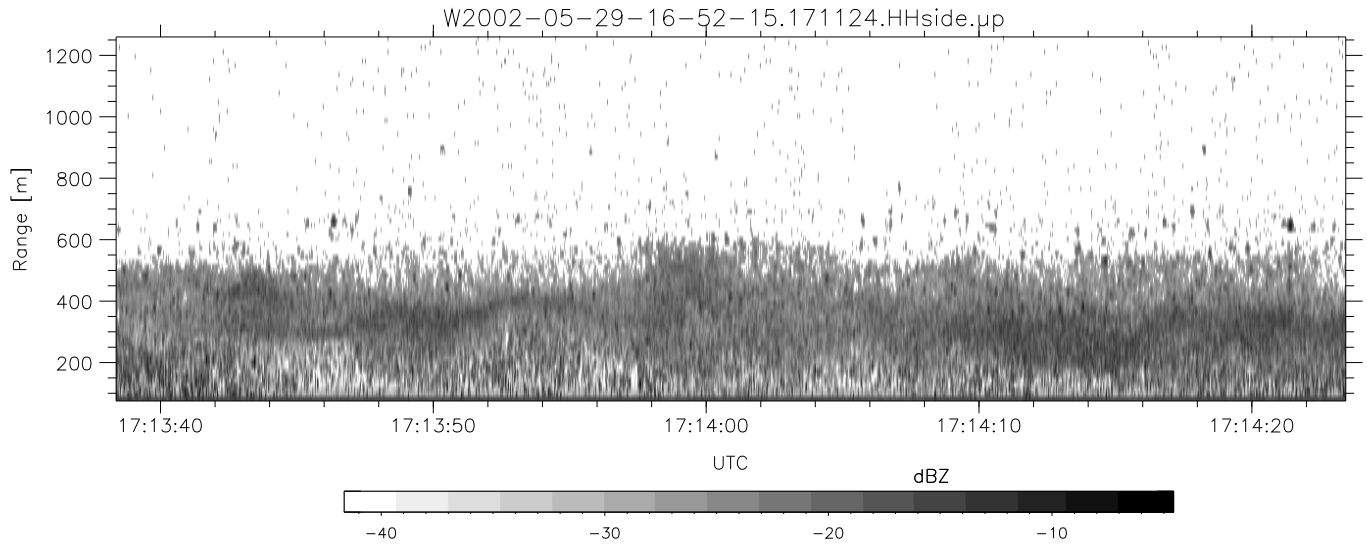


IHOP 2002 (dual-antenna config, modes 1,3,4,7) Data (cal: 49.0,50.0)

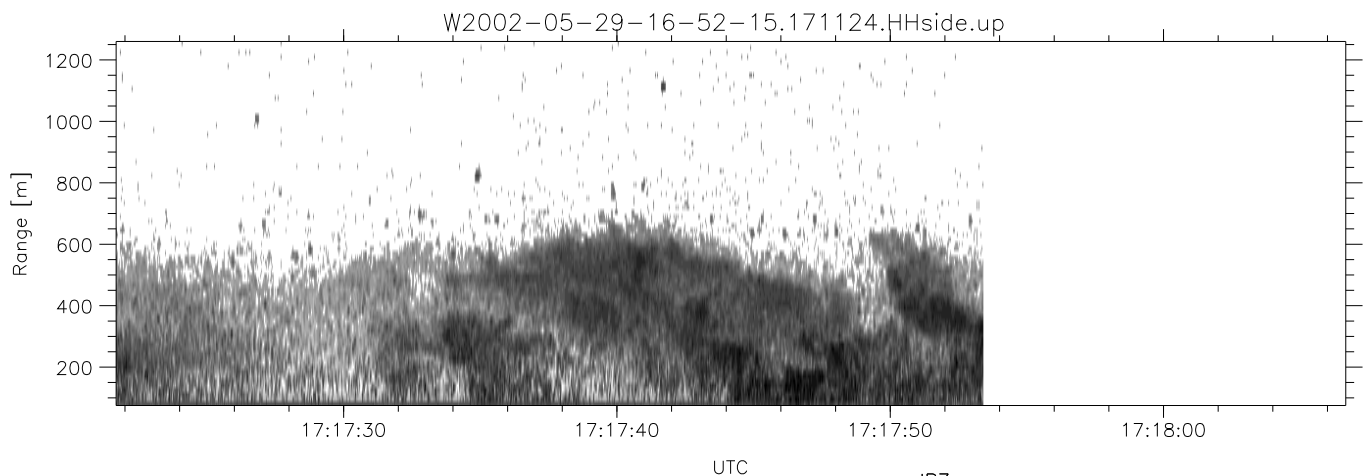
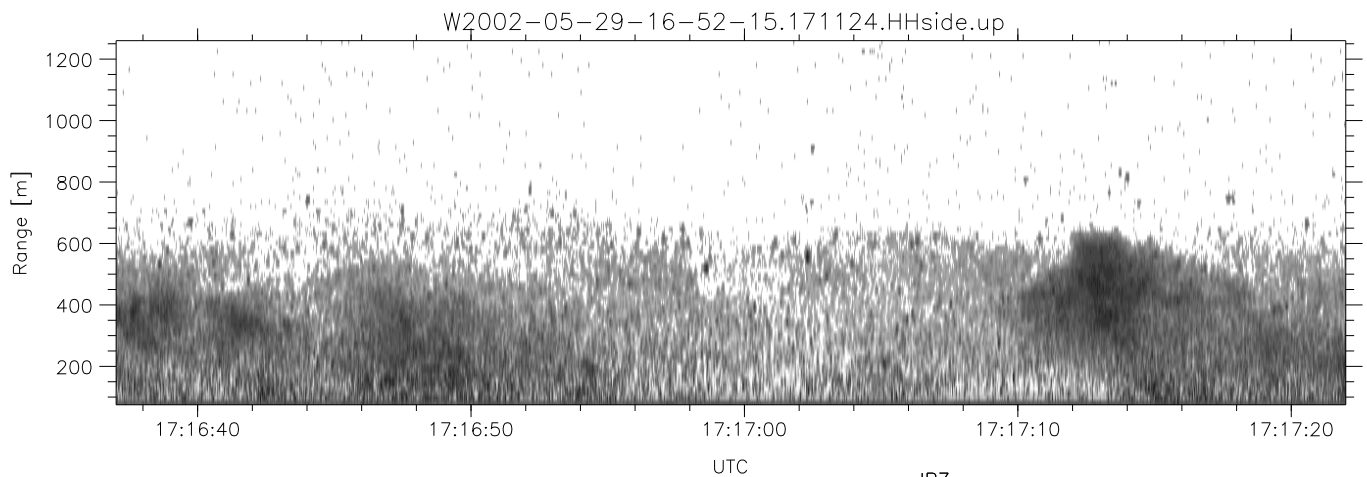
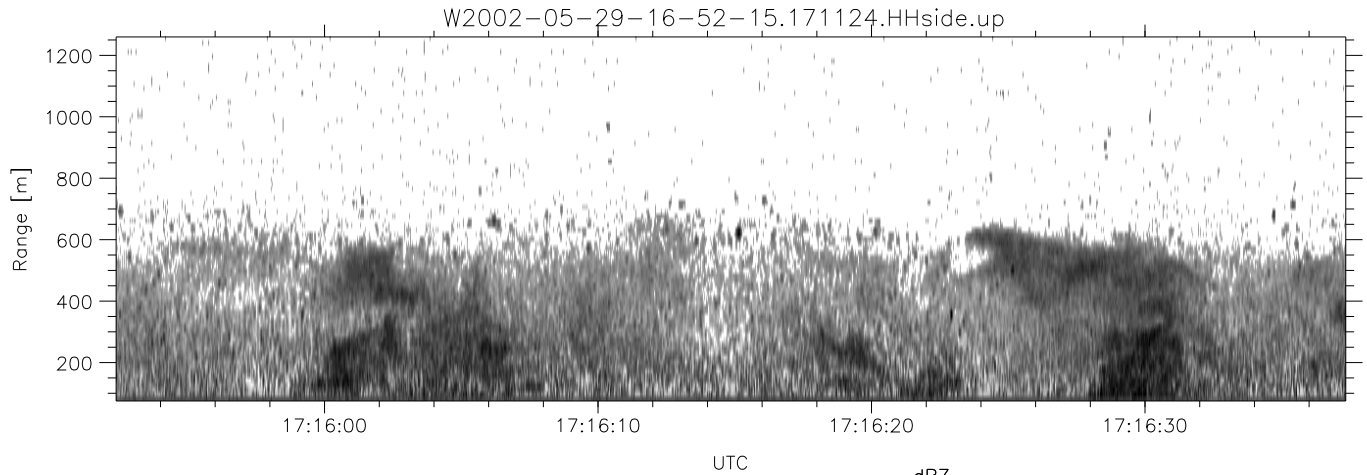
W2002-05-29-16-52-15 - PPMAG4		Min	Max	Mean	Std	Varc%
IRIG:1,UTC: 16:51:56.94 to 17:48:51.00, Dur: 3415s	hhN (dB)	-66.20	-61.09	-64.81	-74.03	12.0
TimeLngth: 3415.06s, TimeInt: 35ms (27.9pps)	vvN (dB)	-66.10	-58.04	-64.45	-70.37	25.6
TimeCor=-13.0s, DSPDif(mn,mx,min):35,35,190	hhL (dB)	-11.30	-7.28	-8.66	-17.18	14.0
PPS(min,max,std): 24,29,1.14	vvL (dB)	-16.86	-13.18	-15.15	-24.70	11.1
Prof: 375 to 95530, NumProf(t/r): 95155/10844	ppN (m/s)	-12.68	12.59	0.18	4.23	
ProcTime/Recs: 17:11:24-17:17:53/32532-43375	ppT (m/s)	-100.1	99.50	1.41	33.44	
MxACQtime: 43ms; DRate: 125.5KB/s; Flags: 0, 0, 0	hh/vv (dB)	-NaN	63.24	16.05	38.62	1808
Pulse: 275ns, IFfilt: 5.0MHz; ppPol: HH HV VV	vh/hh (dB)	-NaN	-20.21	-35.80	-33.99	151.
TxPol: HHVV, PRF: 20 10 20 10 kHz	hv/vv (dB)	-NaN	-14.40	-49.02	-35.79	2103
Range: Delay 75m, Spacing 15m, Gates 80	hn_jmp (dB)	-1.80	2.23	0.13	-8.96	12.3
Ave. Pulses: 108, Rng/Prof Aspect@90m/s: 4.6	vn_jmp (dB)	-4.09	3.81	0.13	-8.66	13.2



IHOP 2002 (dual-antenna config, modes 1,3,4,7) Data (cal: 49.0,50.0)

W2002-05-29-16-52-15 - PPMAG4
 IRIG:1,UTC: 16:51:56.94 to 17:48:51.00, Dur: 3415s
 TimeLngth: 3415.06s, TimeInt: 35ms (27.9pps)
 TimeCor=-13.0s, DSPDif(mn,mx,min):35,35,190
 PPS(min,max,std): 24,29,1.14
 Prof: 375 to 95530, NumProf(t/r): 95155/10844
 ProcTime/Recs: 17:11:24-17:17:53/32532-43375
 MxACQtime: 43ms; DRate: 125.5KB/s; Flags: 0, 0, 0
 Pulse: 275ns, IFfilt: 5.0MHz; ppPol: HH HV VV
 TxPol: HHVV, PRF: 20 10 20 10 kHz
 Range: Delay 75m, Spacing 15m, Gates 80
 Ave. Pulses: 108, Rng/Prof Aspect@90m/s: 4.6

	Min	Max	Mean	Std	Varc%
hhN(dB)	-66.20	-61.09	-64.81	-74.03	12.0
vvN(dB)	-66.10	-58.04	-64.45	-70.37	25.6
hhL(dB)	-11.30	-7.28	-8.66	-17.18	14.0
vvL(dB)	-16.86	-13.18	-15.15	-24.70	11.1
ppN(m/s)	-12.68	12.59	0.18	4.23	
ppT(m/s)	-100.1	99.50	1.41	33.44	
hh/vv(dB)	-NaN	63.24	16.05	38.62	1808
vh/hh(dB)	-NaN	-20.21	-35.80	-33.99	151.
hv/vv(dB)	-NaN	-14.40	-49.02	-35.79	2103
hn_jmp(dB)	-1.80	2.23	0.13	-8.96	12.3
vn_jmp(dB)	-4.09	3.81	0.13	-8.66	13.2



IHOP 2002 (dual-antenna config, modes 1,3,4,7) Data (cal: 49.0,50.0)

W2002-05-29-16-52-15 - PPMAG4
 IRIG:1,UTC: 16:51:56.94 to 17:48:51.00, Dur: 3415s
 TimeLngth: 3415.06s, TimeInt: 35ms (27.9pps)
 TimeCor=-13.0s, DSPDif(mn,mx,min):35,35,190
 PPS(min,max,std): 24,29,1.14
 Prof: 375 to 95530, NumProf(t/r): 95155/10844
 ProcTime/Recs: 17:11:24-17:17:53/32532-43375
 MxACQtime: 43ms; DRate: 125.5KB/s; Flags: 0, 0, 0
 Pulse: 275ns, IFfilt: 5.0MHz; ppPol: HH HV VV
 TxPol: HHVV, PRF: 20 10 20 10 kHz
 Range: Delay 75m, Spacing 15m, Gates 80
 Ave. Pulses: 108, Rng/Prof Aspect@90m/s: 4.6

	Min	Max	Mean	Std	Varc%
hhN(dB)	-66.20	-61.09	-64.81	-74.03	12.0
vvN(dB)	-66.10	-58.04	-64.45	-70.37	25.6
hhL(dB)	-11.30	-7.28	-8.66	-17.18	14.0
vvL(dB)	-16.86	-13.18	-15.15	-24.70	11.1
ppN(m/s)	-12.68	12.59	0.18	4.23	
ppT(m/s)	-100.1	99.50	1.41	33.44	
hh/vv(dB)	-NaN	63.24	16.05	38.62	1808
vh/hh(dB)	-NaN	-20.21	-35.80	-33.99	151.
hv/vv(dB)	-NaN	-14.40	-49.02	-35.79	2103
hn_jmp(dB)	-1.80	2.23	0.13	-8.96	12.3
vn_jmp(dB)	-4.09	3.81	0.13	-8.66	13.2