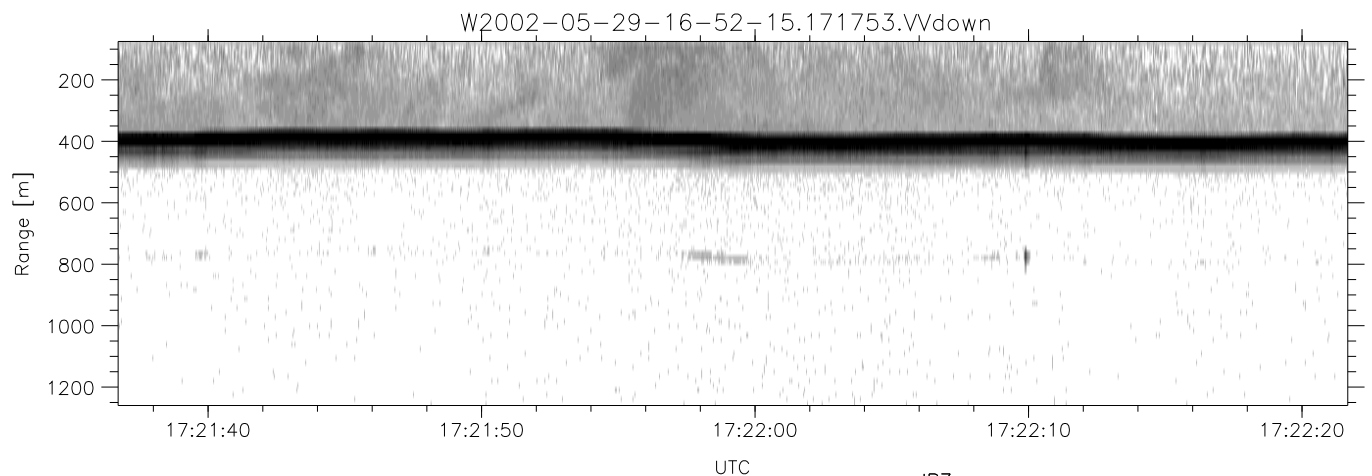
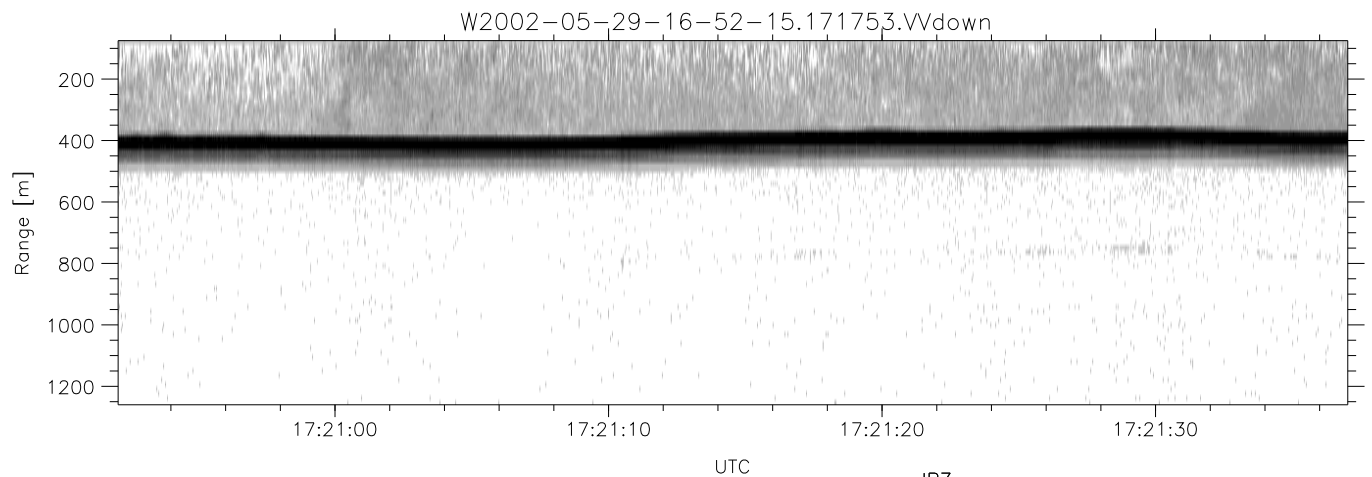
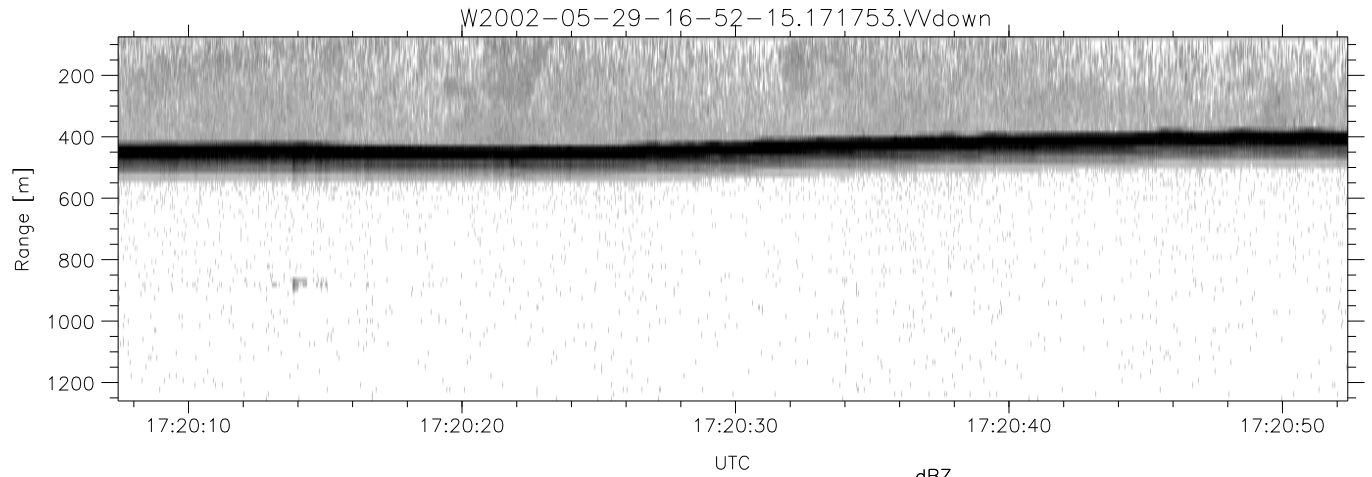


IHOP 2002 (dual-antenna config, modes 1,3,4,7) Data (cal: 49.0,50.0)

W2002-05-29-16-52-15 - PPMAG4
 IRIG:1,UTC: 16:51:56.94 to 17:48:51.00, Dur: 3415s
 TimeLngth: 3415.06s, TimeInt: 35ms (27.9pps)
 TimeCor=-13.0s, DSPDif(mn,mx,min):35,35,175
 PPS(min,max,std): 24,29,1.14
 Prof: 375 to 95530, NumProf(t/r): 95155/10844
 ProcTime/Recs: 17:17:53-17:24:22/43376-54219
 MxACQtime: 43ms; DRate: 125.5KB/s; Flags: 0, 0, 0
 Pulse: 275ns, IFfilt: 5.0MHz; ppPol: HH HV VV
 TxPol: HHVV, PRF: 20 10 20 10 kHz
 Range: Delay 75m, Spacing 15m, Gates 80
 Ave. Pulses: 108, Rng/Prof Aspect@90m/s: 4.6

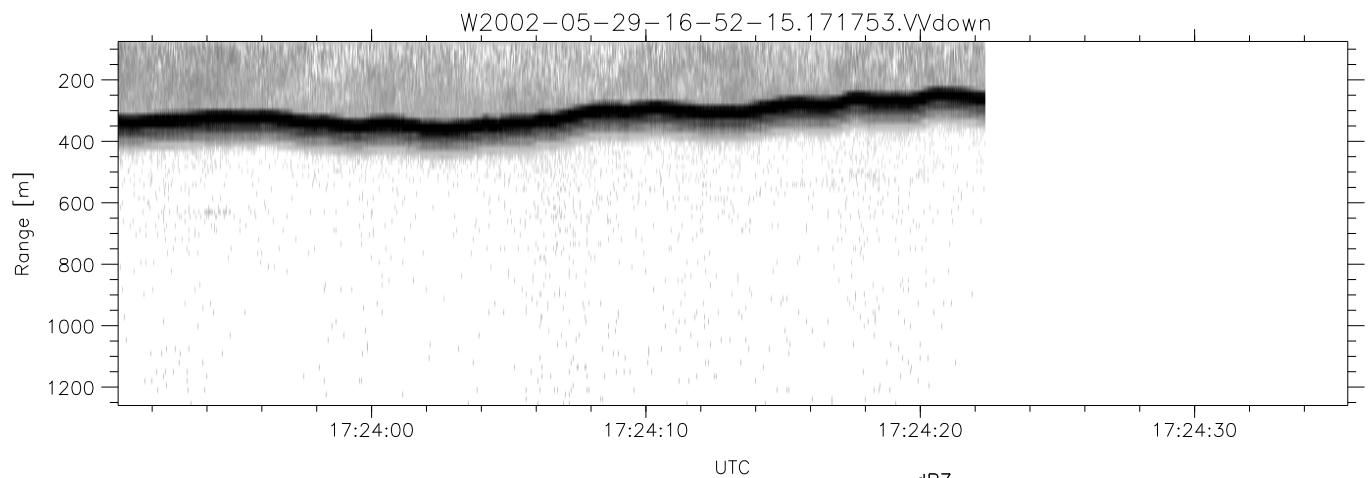
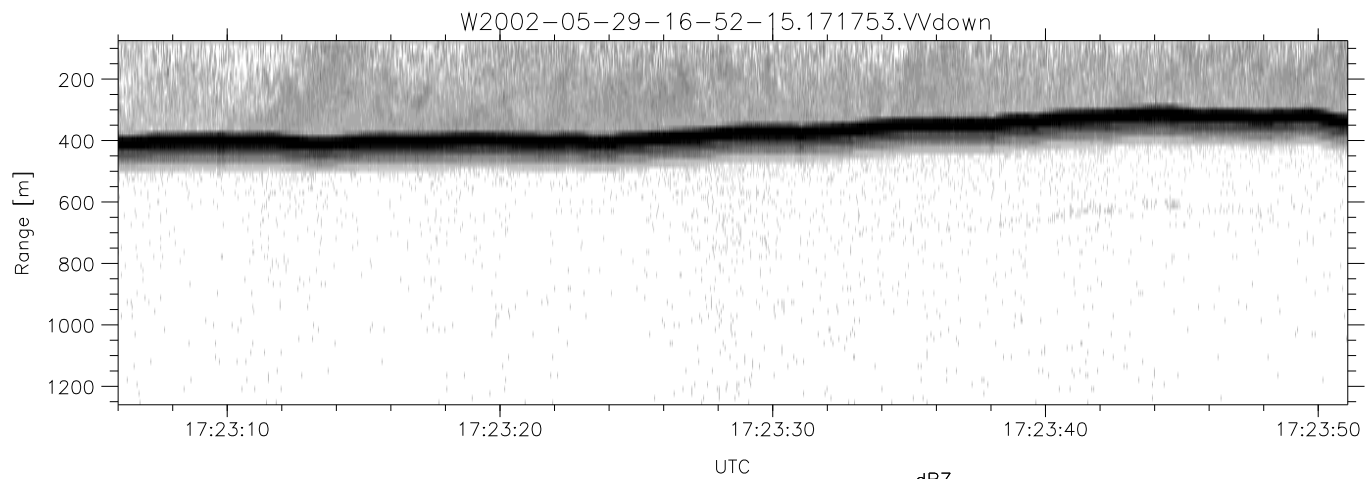
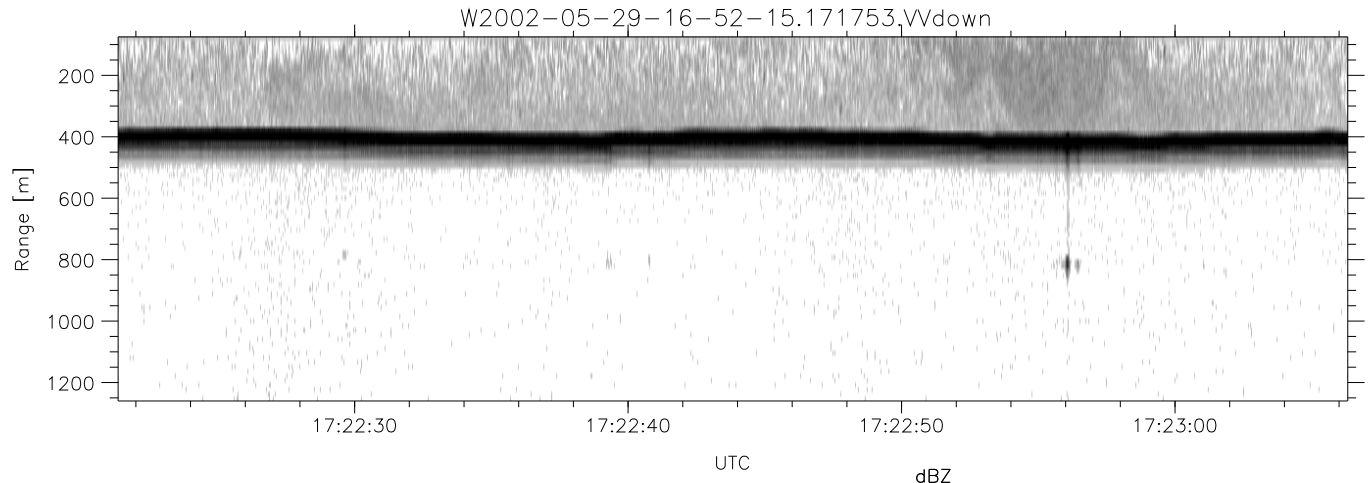
	Min	Max	Mean	Std	Varc%
hhN(dB)	-66.99	-63.73	-64.92	-75.59	8.6
vvN(dB)	-66.21	-63.10	-64.63	-75.29	8.6
hhL(dB)	-11.59	-6.69	-8.93	-17.28	14.6
vvL(dB)	-19.54	-13.57	-15.26	-23.83	13.9
ppN(m/s)	-12.85	12.31	0.07	4.17	
ppT(m/s)	-101.5	97.28	0.52	32.95	
hh/vv(dB)	-NaN	45.59	-NaN	36.65	-295
vh/hh(dB)	-NaN	-14.01	-33.73	-29.97	237.
hv/vv(dB)	-NaN	-33.81	-52.81	-46.73	405.
hnjmp(dB)	-1.55	1.85	0.15	-9.05	12.0
vnjmp(dB)	-1.88	1.83	0.13	-9.05	12.1



IHOP 2002 (dual-antenna config, modes 1,3,4,7) Data (cal: 49.0,50.0)

W2002-05-29-16-52-15 - PPMAG4
 IRIG:1,UTC: 16:51:56.94 to 17:48:51.00, Dur: 3415s
 TimeLngth: 3415.06s, TimeInt: 35ms (27.9pps)
 TimeCor=-13.0s, DSPDif(mn,mx,min):35,35,175
 PPS(min,max,std): 24,29,1.14
 Prof: 375 to 95530, NumProf(t/r): 95155/10844
 ProcTime/Recs: 17:17:53-17:24:22/43376-54219
 MxACQtime: 43ms; DRate: 125.5KB/s; Flags: 0, 0, 0
 Pulse: 275ns, IFfilt: 5.0MHz; ppPol: HH HV VV
 TxPol: HHVV, PRF: 20 10 20 10 kHz
 Range: Delay 75m, Spacing 15m, Gates 80
 Ave. Pulses: 108, Rng/Prof Aspect@90m/s: 4.6

	Min	Max	Mean	Std	Varc%
hhN(dB)	-66.99	-63.73	-64.92	-75.59	8.6
vvN(dB)	-66.21	-63.10	-64.63	-75.29	8.6
hhL(dB)	-11.59	-6.69	-8.93	-17.28	14.6
vvL(dB)	-19.54	-13.57	-15.26	-23.83	13.9
ppN(m/s)	-12.85	12.31	0.07	4.17	
ppT(m/s)	-101.5	97.28	0.52	32.95	
hh/vv(dB)	-NaN	45.59	-NaN	36.65	-295
vh/hh(dB)	-NaN	-14.01	-33.73	-29.97	237.
hv/vv(dB)	-NaN	-33.81	-52.81	-46.73	405.
hnjmp(dB)	-1.55	1.85	0.15	-9.05	12.0
vnjmp(dB)	-1.88	1.83	0.13	-9.05	12.1



IHOP 2002 (dual-antenna config, modes 1,3,4,7) Data (cal: 49.0,50.0)

W2002-05-29-16-52-15 - PPMAG4
 IRIG:1,UTC: 16:51:56.94 to 17:48:51.00, Dur: 3415s
 TimeLngth: 3415.06s, TimeInt: 35ms (27.9pps)
 TimeCor=-13.0s, DSPDif(mn,mx,min):35,35,175
 PPS(min,max,std): 24,29,1.14
 Prof: 375 to 95530, NumProf(t/r): 95155/10844
 ProcTime/Recs: 17:17:53-17:24:22/43376-54219
 MxACQtime: 43ms; DRate: 125.5KB/s; Flags: 0, 0, 0
 Pulse: 275ns, IFfilt: 5.0MHz; ppPol: HH HV VV
 TxPol: HHVV, PRF: 20 10 20 10 kHz
 Range: Delay 75m, Spacing 15m, Gates 80
 Ave. Pulses: 108, Rng/Prof Aspect@90m/s: 4.6

	Min	Max	Mean	Std	Varc%
hhN(dB)	-66.99	-63.73	-64.92	-75.59	8.6
vvN(dB)	-66.21	-63.10	-64.63	-75.29	8.6
hhL(dB)	-11.59	-6.69	-8.93	-17.28	14.6
vvL(dB)	-19.54	-13.57	-15.26	-23.83	13.9
ppN(m/s)	-12.85	12.31	0.07	4.17	
ppT(m/s)	-101.5	97.28	0.52	32.95	
hh/vv(dB)	-NaN	45.59	-NaN	36.65	-295
vh/hh(dB)	-NaN	-14.01	-33.73	-29.97	237.
hv/vv(dB)	-NaN	-33.81	-52.81	-46.73	405.
hnjmp(dB)	-1.55	1.85	0.15	-9.05	12.0
vnjmp(dB)	-1.88	1.83	0.13	-9.05	12.1