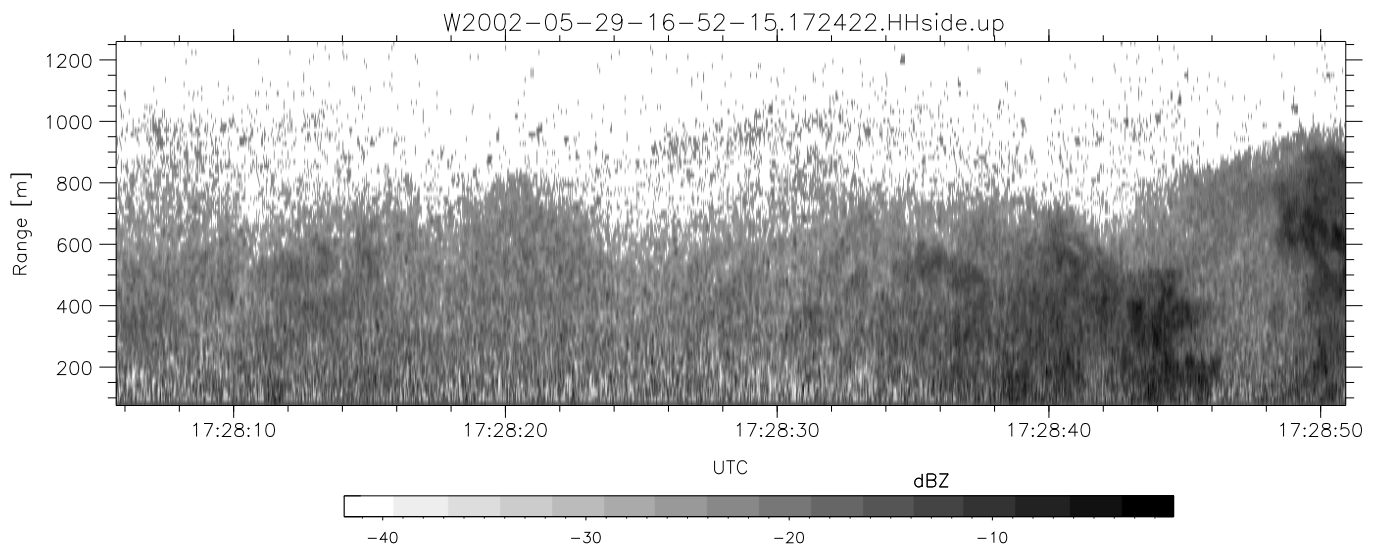
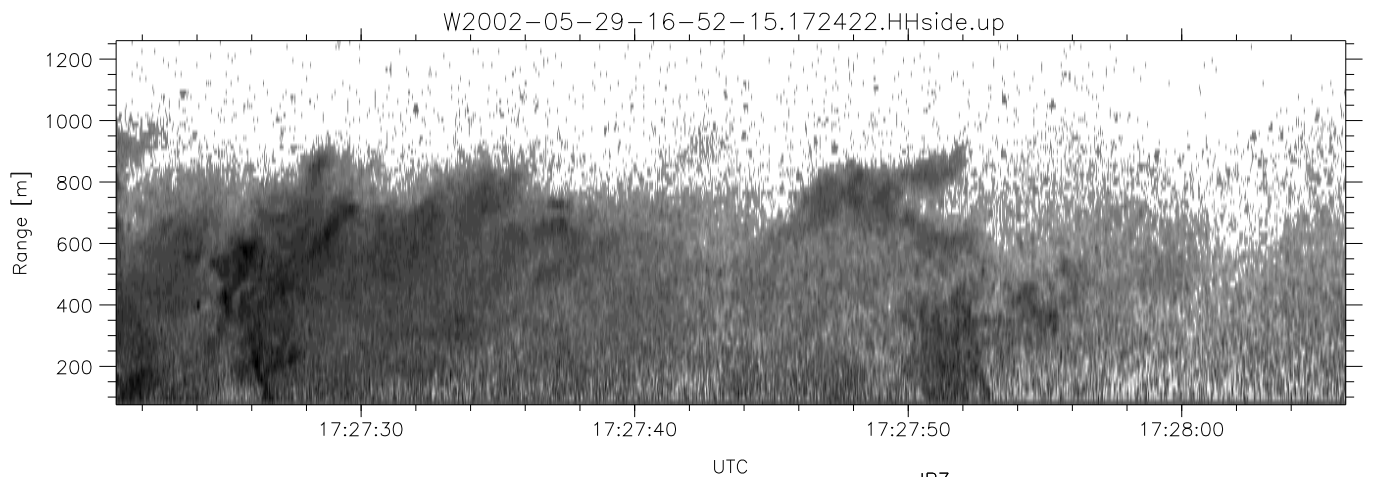
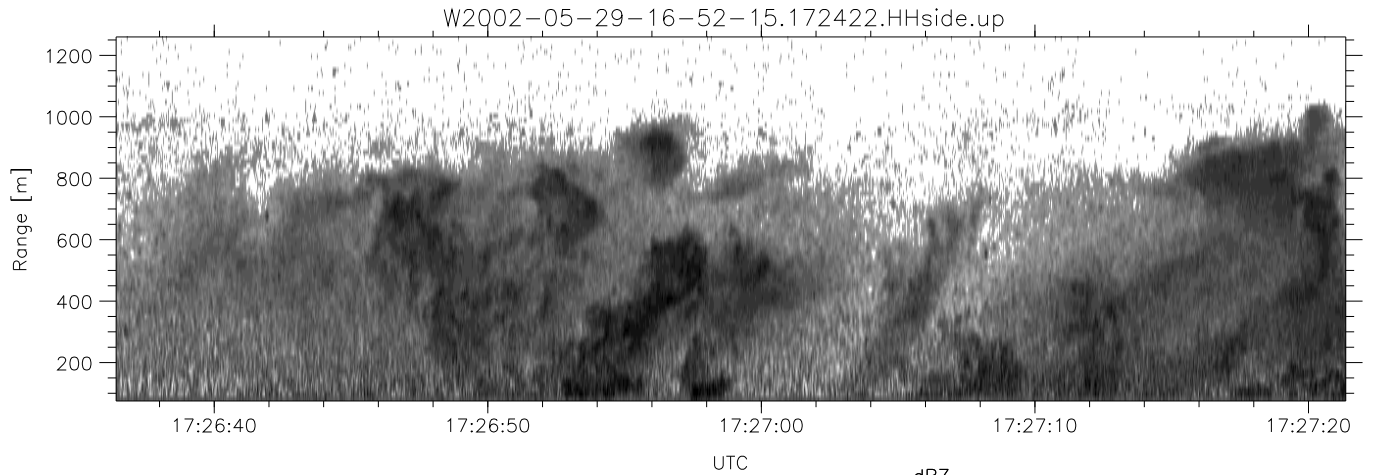


IHOP 2002 (dual-antenna config, modes 1,3,4,7) Data (cal: 49.0,50.0)

W2002-05-29-16-52-15 - PPMAG4
 IRIG:1,UTC: 16:51:56.94 to 17:48:51.00, Dur: 3415s
 TimeLngth: 3415.06s, TimeInt: 35ms (27.9pps)
 TimeCor=-13.0s, DSPDif(mn,mx,min):35,35,178
 PPS(min,max,std): 24,29,1.18
 Prof: 375 to 95530, NumProf(t/r): 95155/10844
 ProcTime/Recs: 17:24:22-17:30:51/54220-65063
 MxACQtime: 43ms; DRate: 125.5KB/s; Flags: 0, 0, 0
 Pulse: 275ns, IFfilt: 5.0MHz; ppPol: HH HV VV
 TxPol: HHVV, PRF: 20 10 20 10 kHz
 Range: Delay 75m, Spacing 15m, Gates 80
 Ave. Pulses: 108, Rng/Prof Aspect@90m/s: 4.6

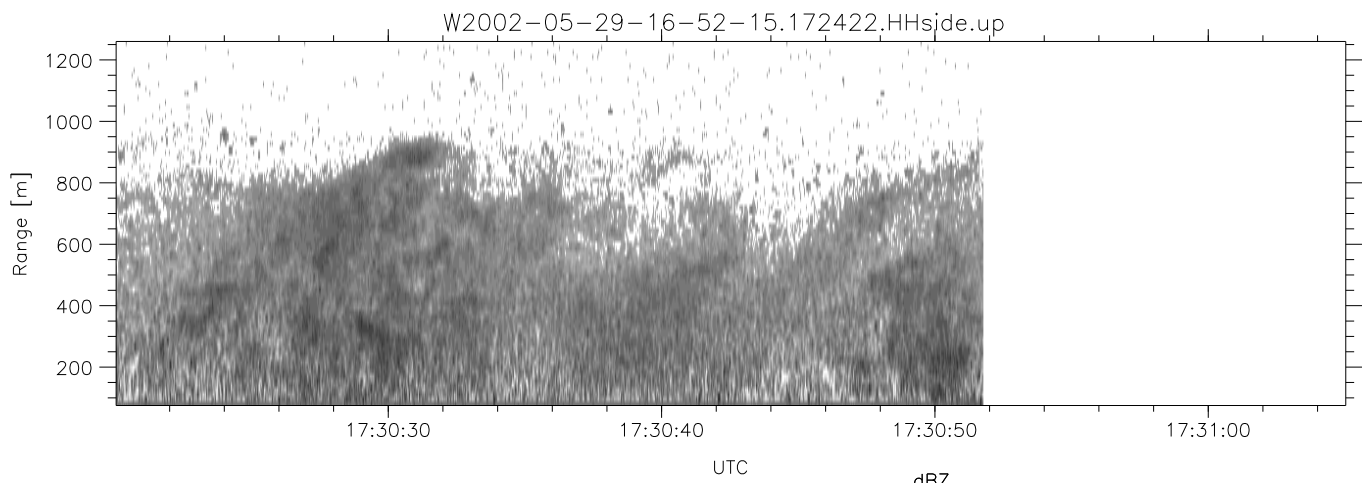
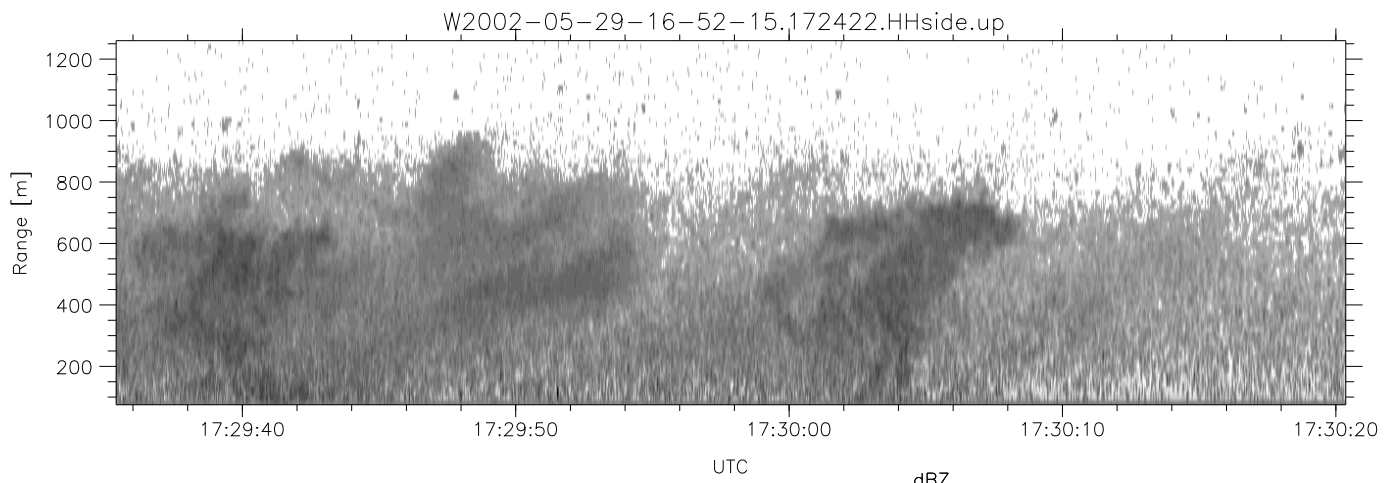
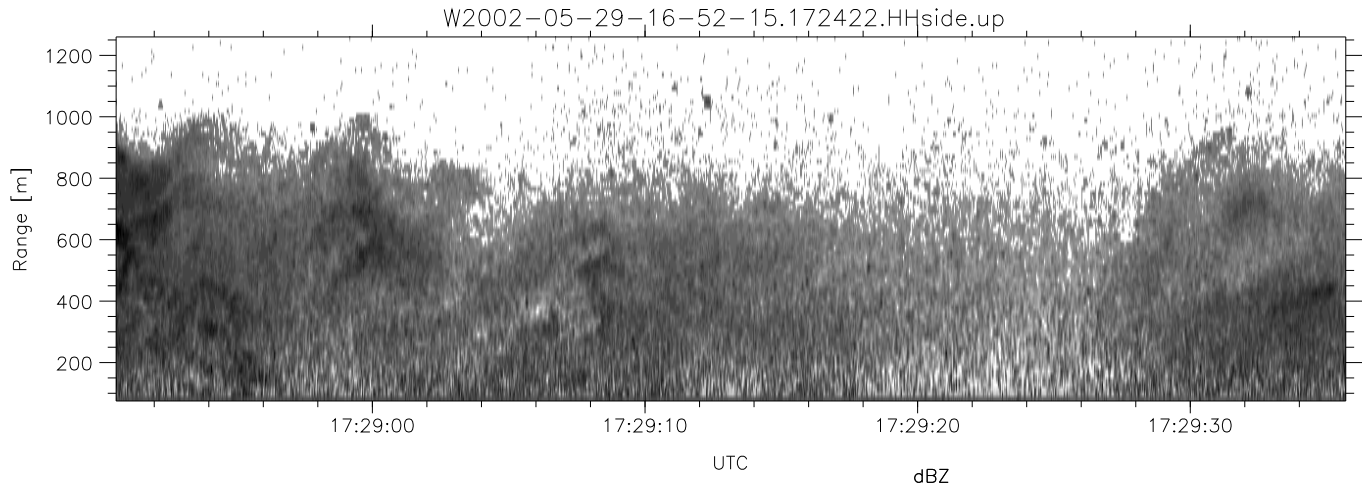
| | Min | Max | Mean | Std | Varc% |
|-----------|--------|--------|--------|--------|-------|
| hhN(dB) | -66.34 | -63.63 | -64.97 | -75.63 | 8.6 |
| vvN(dB) | -66.23 | -63.18 | -64.74 | -75.37 | 8.6 |
| hhL(dB) | -12.51 | -6.70 | -9.07 | -15.66 | 22.0 |
| vvL(dB) | -21.03 | -13.28 | -16.90 | -22.87 | 25.3 |
| ppN(m/s) | -12.23 | 12.65 | 0.08 | 4.17 | |
| ppT(m/s) | -96.62 | 99.92 | 0.61 | 32.93 | |
| hh/vv(dB) | -NaN | 72.09 | 19.42 | 46.85 | 5532 |
| vh/hh(dB) | -NaN | 0.86 | -16.80 | -10.77 | 400. |
| hv/vv(dB) | -NaN | -13.86 | -32.04 | -27.77 | 267. |
| hnjmp(dB) | -1.98 | 1.97 | 0.15 | -9.09 | 11.9 |
| vnjmp(dB) | -1.61 | 2.24 | 0.14 | -9.03 | 12.1 |



IHOP 2002 (dual-antenna config, modes 1,3,4,7) Data (cal: 49.0,50.0)

W2002-05-29-16-52-15 - PPMAG4
 IRIG:1,UTC: 16:51:56.94 to 17:48:51.00, Dur: 3415s
 TimeLngth: 3415.06s, TimeInt: 35ms (27.9pps)
 TimeCor=-13.0s, DSPDif(mn,mx,min):35,35,178
 PPS(min,max,std): 24,29,1.18
 Prof: 375 to 95530, NumProf(t/r): 95155/10844
 ProcTime/Recs: 17:24:22-17:30:51/54220-65063
 MxACQtime: 43ms; DRate: 125.5KB/s; Flags: 0, 0, 0
 Pulse: 275ns, IFfilt: 5.0MHz; ppPol: HH HV VV
 TxPol: HHVV, PRF: 20 10 20 10 kHz
 Range: Delay 75m, Spacing 15m, Gates 80
 Ave. Pulses: 108, Rng/Prof Aspect@90m/s: 4.6

| | Min | Max | Mean | Std | Varc% |
|------------|--------|--------|--------|--------|-------|
| hhN (dB) | -66.34 | -63.63 | -64.97 | -75.63 | 8.6 |
| vvN (dB) | -66.23 | -63.18 | -64.74 | -75.37 | 8.6 |
| hhL (dB) | -12.51 | -6.70 | -9.07 | -15.66 | 22.0 |
| vvL (dB) | -21.03 | -13.28 | -16.90 | -22.87 | 25.3 |
| ppN (m/s) | -12.23 | 12.65 | 0.08 | 4.17 | |
| ppT (m/s) | -96.62 | 99.92 | 0.61 | 32.93 | |
| hh/vv (dB) | -NaN | 72.09 | 19.42 | 46.85 | 5532 |
| vh/hh (dB) | -NaN | 0.86 | -16.80 | -10.77 | 400. |
| hv/vv (dB) | -NaN | -13.86 | -32.04 | -27.77 | 267. |
| hnjmp (dB) | -1.98 | 1.97 | 0.15 | -9.09 | 11.9 |
| vnjmp (dB) | -1.61 | 2.24 | 0.14 | -9.03 | 12.1 |



IHOP 2002 (dual-antenna config, modes 1,3,4,7) Data (cal: 49.0,50.0)

W2002-05-29-16-52-15 - PPMAG4
 IRIG:1,UTC: 16:51:56.94 to 17:48:51.00, Dur: 3415s
 TimeLngth: 3415.06s, TimeInt: 35ms (27.9pps)
 TimeCor=-13.0s, DSPDif(mn,mx,min):35,35,178
 PPS(min,max,std): 24,29,1.18
 Prof: 375 to 95530, NumProf(t/r): 95155/10844
 ProcTime/Recs: 17:24:22-17:30:51/54220-65063
 MxACQtime: 43ms; DRate: 125.5KB/s; Flags: 0, 0, 0
 Pulse: 275ns, IFfilt: 5.0MHz; ppPol: HH HV VV
 TxPol: HHVV, PRF: 20 10 20 10 kHz
 Range: Delay 75m, Spacing 15m, Gates 80
 Ave. Pulses: 108, Rng/Prof Aspect@90m/s: 4.6

| | Min | Max | Mean | Std | Varc% |
|-----------|--------|--------|--------|--------|-------|
| hhN(dB) | -66.34 | -63.63 | -64.97 | -75.63 | 8.6 |
| vvN(dB) | -66.23 | -63.18 | -64.74 | -75.37 | 8.6 |
| hhL(dB) | -12.51 | -6.70 | -9.07 | -15.66 | 22.0 |
| vvL(dB) | -21.03 | -13.28 | -16.90 | -22.87 | 25.3 |
| ppN(m/s) | -12.23 | 12.65 | 0.08 | 4.17 | |
| ppT(m/s) | -96.62 | 99.92 | 0.61 | 32.93 | |
| hh/vv(dB) | -NaN | 72.09 | 19.42 | 46.85 | 5532 |
| vh/hh(dB) | -NaN | 0.86 | -16.80 | -10.77 | 400. |
| hv/vv(dB) | -NaN | -13.86 | -32.04 | -27.77 | 267. |
| hnjmp(dB) | -1.98 | 1.97 | 0.15 | -9.09 | 11.9 |
| vnjmp(dB) | -1.61 | 2.24 | 0.14 | -9.03 | 12.1 |