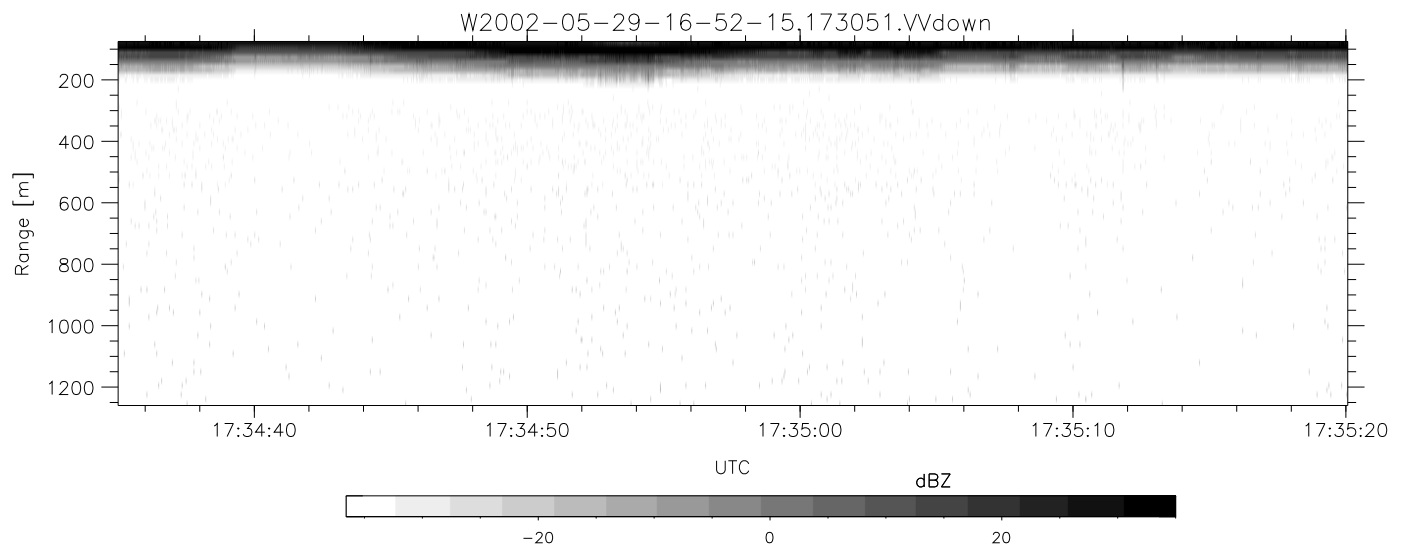
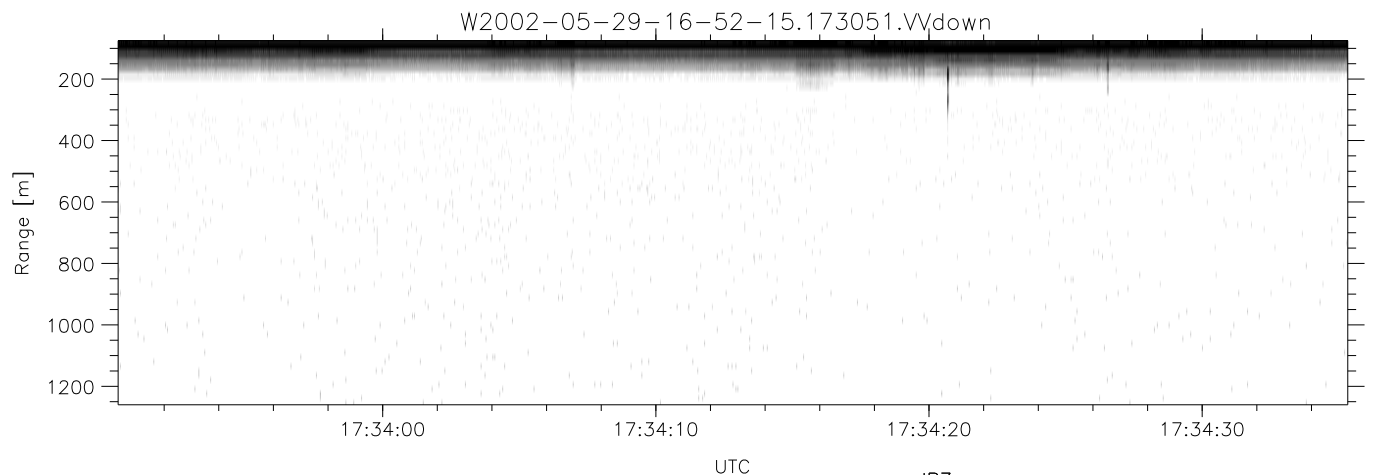
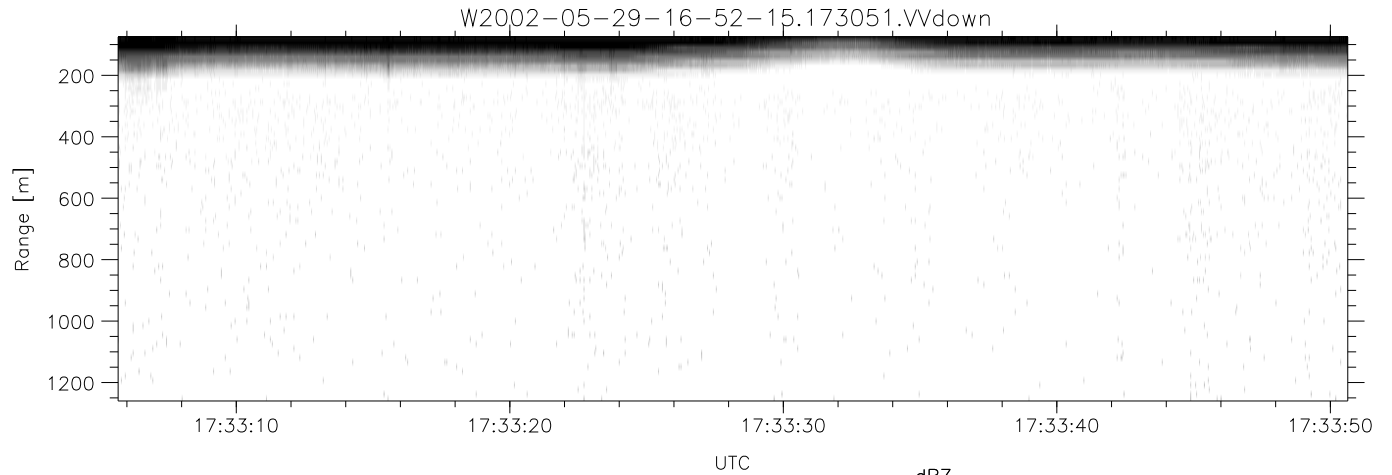


IHOP 2002 (dual-antenna config, modes 1,3,4,7) Data (cal: 49.0,50.0)

W2002-05-29-16-52-15 - PPMAG4
 IRIG:1,UTC: 16:51:56.94 to 17:48:51.00, Dur: 3415s
 TimeLngth: 3415.06s, TimeInt: 35ms (27.9pps)
 TimeCor=-13.0s, DSPDif(mn,mx,min):35,35,187
 PPS(min,max,std): 23,29,1.15
 Prof: 375 to 95530, NumProf(t/r): 95155/10844
 ProcTime/Recs: 17:30:51-17:37:20/65064-75907
 MxACQtime: 43ms; DRate: 125.5KB/s; Flags: 0, 0, 0
 Pulse: 275ns, IFfilt: 5.0MHz; ppPol: HH HV VV
 TxPol: HHVV, PRF: 20 10 20 10 kHz
 Range: Delay 75m, Spacing 15m, Gates 80
 Ave. Pulses: 108, Rng/Prof Aspect@90m/s: 4.6

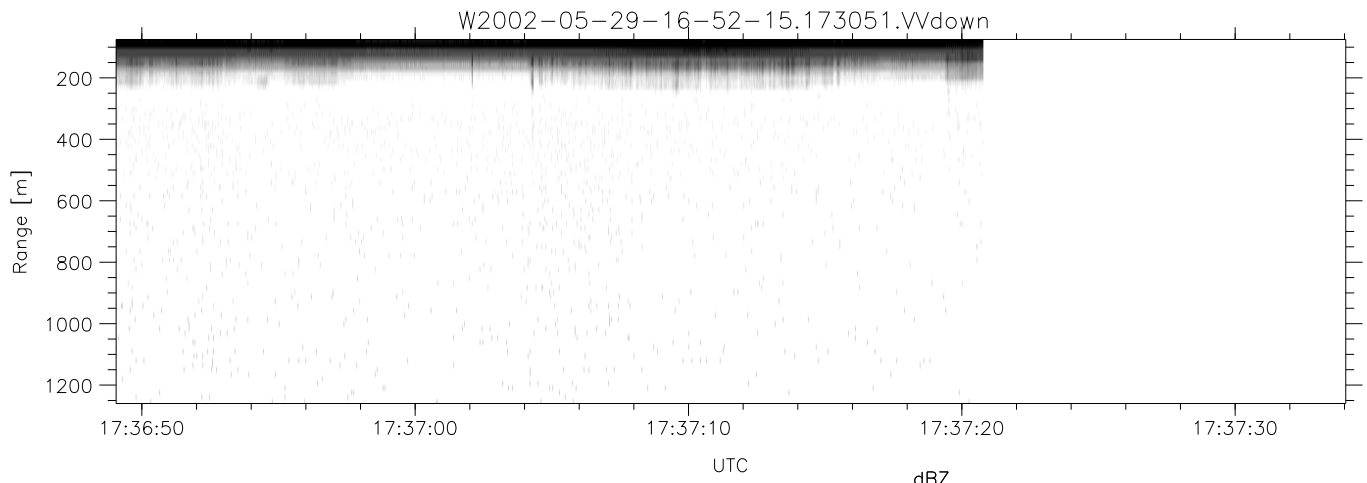
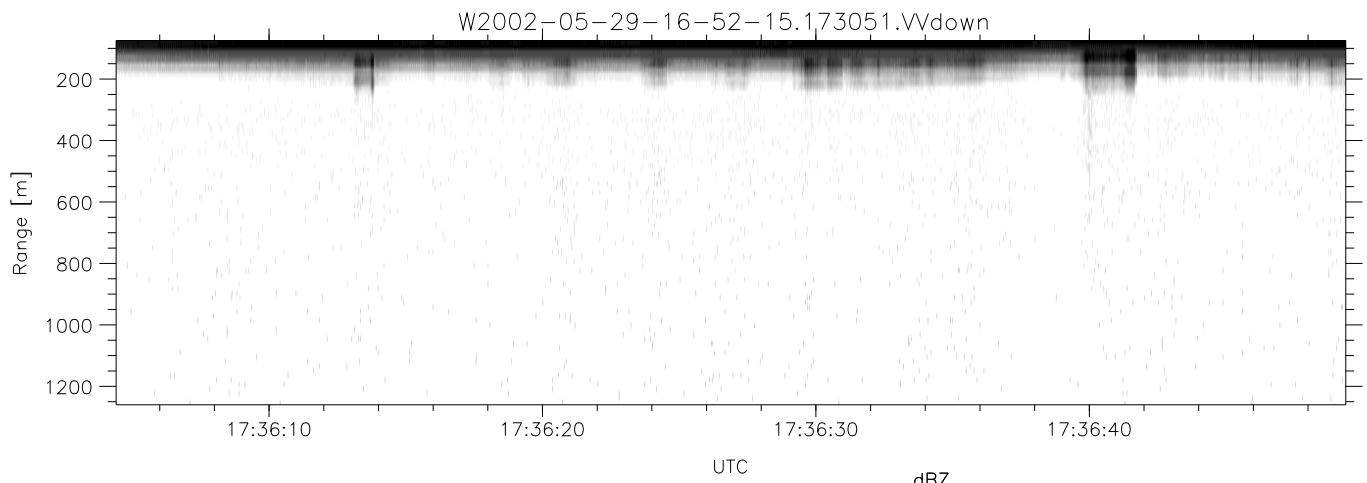
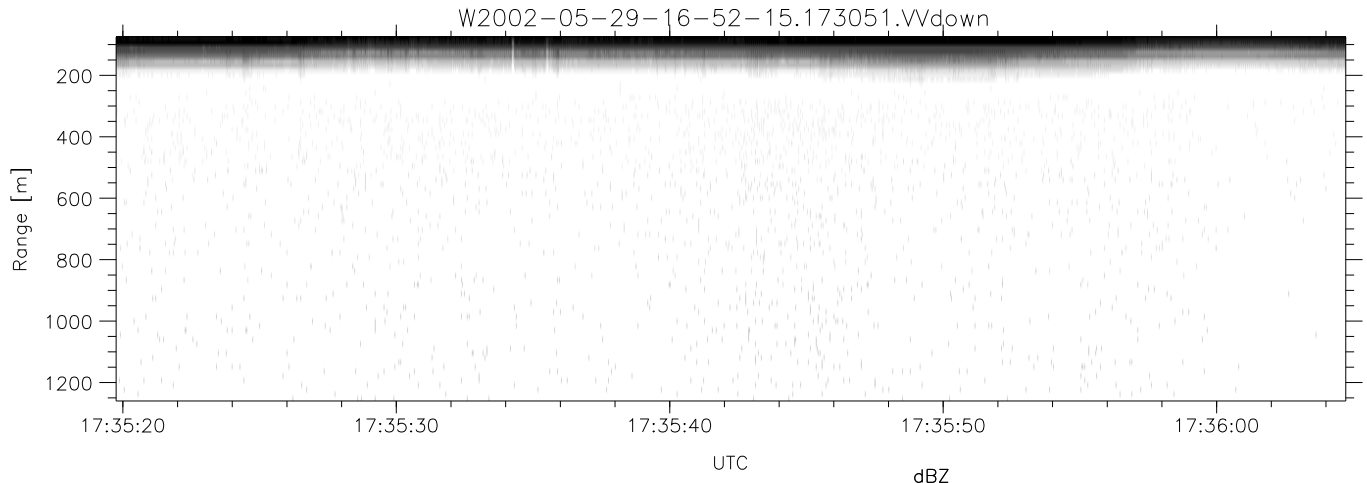
	Min	Max	Mean	Std	Varc%
hhN(dB)	-66.71	-63.72	-65.06	-75.67	8.7
vvN(dB)	-66.28	-63.46	-64.81	-75.35	8.8
hhL(dB)	-13.01	-8.05	-10.20	-18.58	14.5
vvL(dB)	-20.72	-14.20	-17.22	-24.39	19.2
ppN(m/s)	-12.23	12.75	0.17	4.21	
ppT(m/s)	-96.61	100.74	1.35	33.29	
hh/vv(dB)	-NaN	72.87	24.60	47.62	2005
vh/hh(dB)	-NaN	-5.63	-24.43	-19.73	295.
hv/vv(dB)	-NaN	-7.99	-27.38	-22.62	299.
hnjmp(dB)	-2.16	1.91	0.14	-9.05	12.1
vnjmp(dB)	-1.81	2.03	0.14	-8.98	12.3



IHOP 2002 (dual-antenna config, modes 1,3,4,7) Data (cal: 49.0,50.0)

W2002-05-29-16-52-15 - PPMAG4
 IRIG:1,UTC: 16:51:56.94 to 17:48:51.00, Dur: 3415s
 TimeLngth: 3415.06s, TimeInt: 35ms (27.9pps)
 TimeCor=-13.0s, DSPDif(mn,mx,min):35,35,187
 PPS(min,max,std): 23,29,1.15
 Prof: 375 to 95530, NumProf(t/r): 95155/10844
 ProcTime/Recs: 17:30:51-17:37:20/65064-75907
 MxACQtime: 43ms; DRate: 125.5KB/s; Flags: 0, 0, 0
 Pulse: 275ns, IFfilt: 5.0MHz; ppPol: HH HV VV
 TxPol: HHVV, PRF: 20 10 20 10 kHz
 Range: Delay 75m, Spacing 15m, Gates 80
 Ave. Pulses: 108, Rng/Prof Aspect@90m/s: 4.6

	Min	Max	Mean	Std	Varc%
hhN(dB)	-66.71	-63.72	-65.06	-75.67	8.7
vvN(dB)	-66.28	-63.46	-64.81	-75.35	8.8
hhL(dB)	-13.01	-8.05	-10.20	-18.58	14.5
vvL(dB)	-20.72	-14.20	-17.22	-24.39	19.2
ppN(m/s)	-12.23	12.75	0.17	4.21	
ppT(m/s)	-96.61	100.74	1.35	33.29	
hh/vv(dB)	-NaN	72.87	24.60	47.62	2005
vh/hh(dB)	-NaN	-5.63	-24.43	-19.73	295.
hv/vv(dB)	-NaN	-7.99	-27.38	-22.62	299.
hnjmp(dB)	-2.16	1.91	0.14	-9.05	12.1
vnjmp(dB)	-1.81	2.03	0.14	-8.98	12.3



IHOP 2002 (dual-antenna config, modes 1,3,4,7) Data (cal: 49.0,50.0)

W2002-05-29-16-52-15 - PPMAG4
 IRIG:1,UTC: 16:51:56.94 to 17:48:51.00, Dur: 3415s
 TimeLngth: 3415.06s, TimeInt: 35ms (27.9pps)
 TimeCor=-13.0s, DSPDif(mn,mx,min):35,35,187
 PPS(min,max,std): 23,29,1.15
 Prof: 375 to 95530, NumProf(t/r): 95155/10844
 ProcTime/Recs: 17:30:51-17:37:20/65064-75907
 MxACQtime: 43ms; DRate: 125.5KB/s; Flags: 0, 0, 0
 Pulse: 275ns, IFilt: 5.0MHz; ppPol: HH HV VV
 TxPol: HHVV, PRF: 20 10 20 10 kHz
 Range: Delay 75m, Spacing 15m, Gates 80
 Ave. Pulses: 108, Rng/Prof Aspect@90m/s: 4.6

	Min	Max	Mean	Std	Varc%
hhN(dB)	-66.71	-63.72	-65.06	-75.67	8.7
vvN(dB)	-66.28	-63.46	-64.81	-75.35	8.8
hhL(dB)	-13.01	-8.05	-10.20	-18.58	14.5
vvL(dB)	-20.72	-14.20	-17.22	-24.39	19.2
ppN(m/s)	-12.23	12.75	0.17	4.21	
ppT(m/s)	-96.61	100.74	1.35	33.29	
hh/vv(dB)	-NaN	72.87	24.60	47.62	2005
vh/hh(dB)	-NaN	-5.63	-24.43	-19.73	295.
hv/vv(dB)	-NaN	-7.99	-27.38	-22.62	299.
hnjmp(dB)	-2.16	1.91	0.14	-9.05	12.1
vnjmp(dB)	-1.81	2.03	0.14	-8.98	12.3