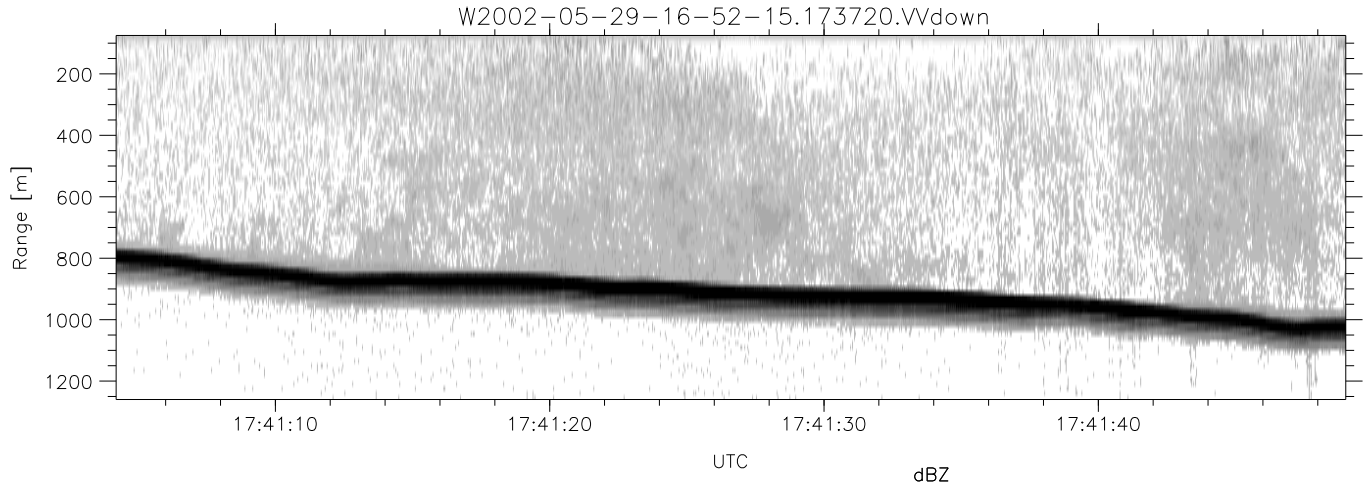
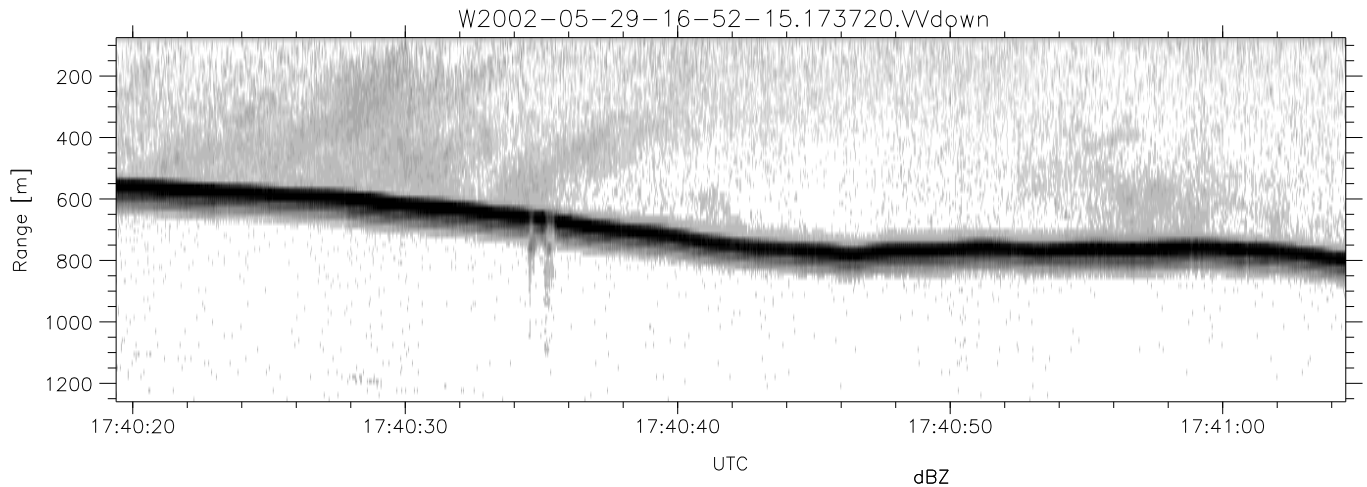
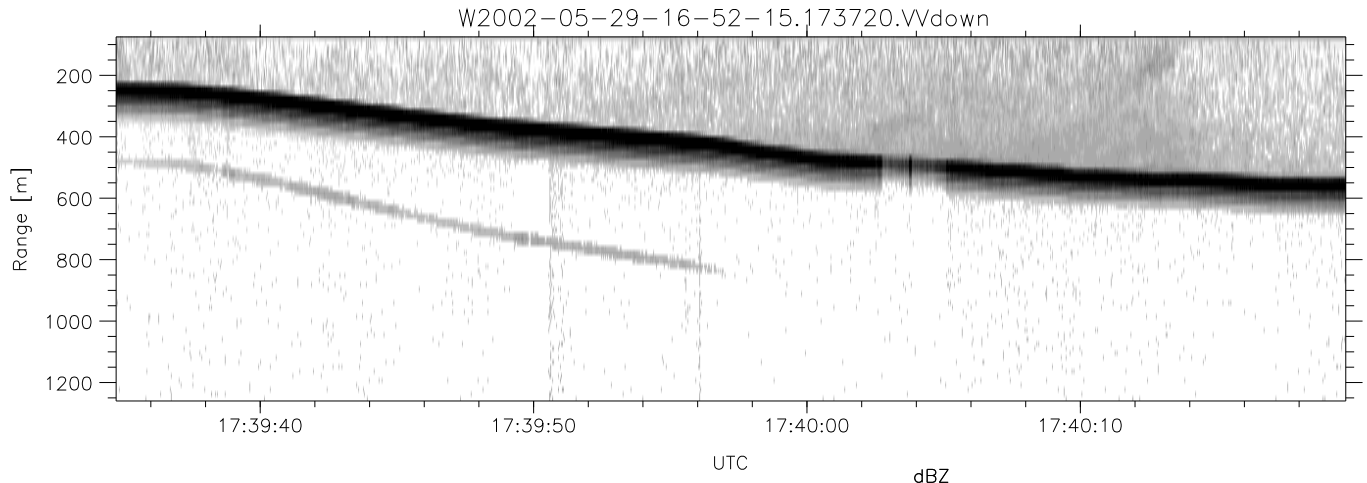


IHOP 2002 (dual-antenna config, modes 1,3,4,7) Data (cal: 49.0,50.0)

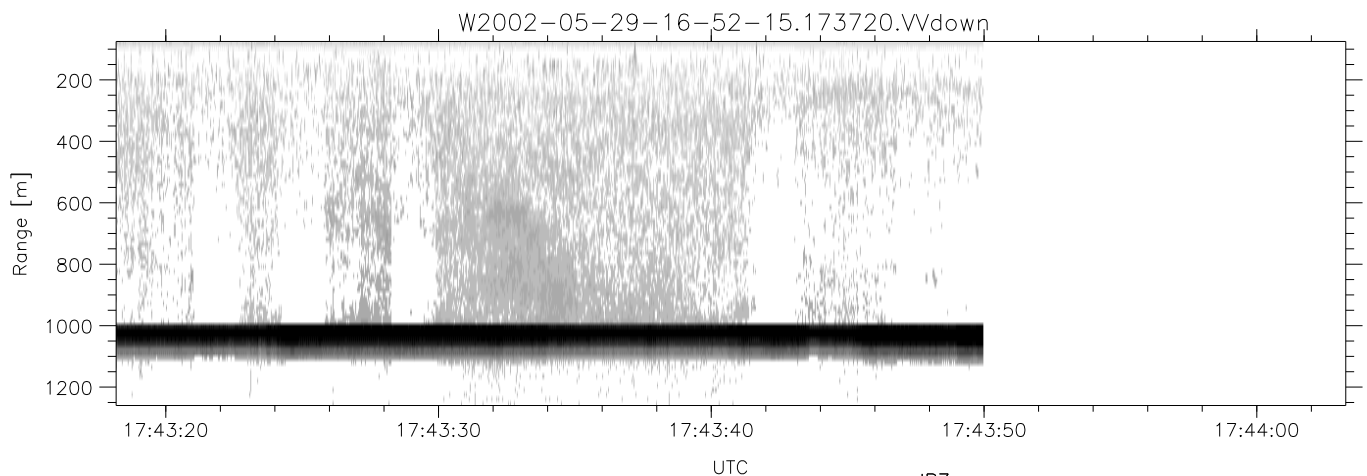
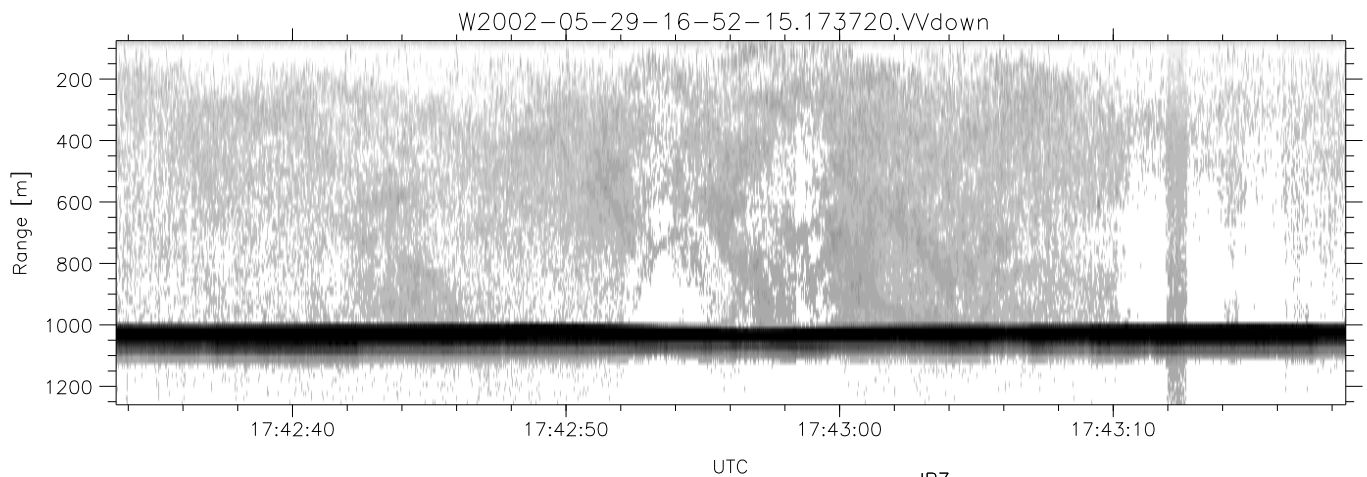
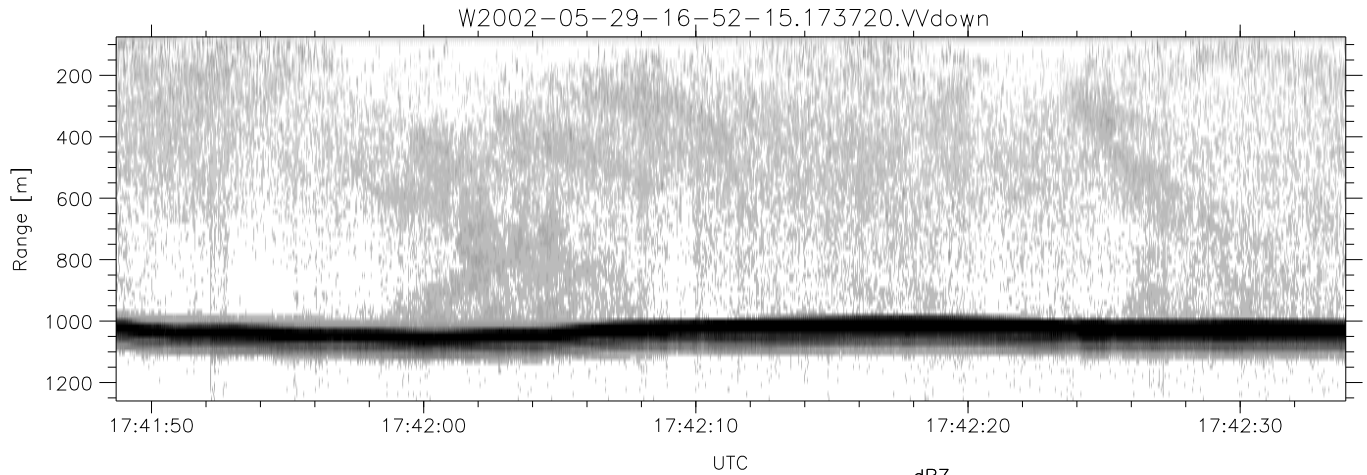
W2002-05-29-16-52-15 - PPMAG4						
IRIG:1,UTC: 16:51:56.94 to 17:48:51.00, Dur: 3415s	hhN (dB)	Min	Max	Mean	Std	Varc%
TimeLngth: 3415.06s, TimeInt: 35ms (27.9pps)	vvN (dB)	-66.72	-63.44	-65.15	-75.33	9.6
TimeCor=-13.0s, DSPDif(mn,mx,min):35,35,199	hhL (dB)	-66.55	-61.13	-64.30	-71.87	17.5
PPS(min,max,std): 23,29,1.14	vvL (dB)	-17.90	-8.41	-11.81	-14.80	50.3
Prof: 375 to 95530, NumProf(t/r): 95155/10844	ppN (m/s)	-27.56	-11.82	-16.45	-18.80	58.2
ProcTime/Recs: 17:37:20-17:43:49/75908-86751	ppT (m/s)	-12.39	12.28	0.27	4.19	
MxAcQtime: 43ms; DRate: 125.5KB/s; Flags: 0, 0, 0	hh/vv (dB)	-97.87	97.02	2.15	33.14	
Pulse: 275ns, IFilt: 5.0MHz; ppPol: HH HV VV	vh/vv (dB)	-NaN	71.15	18.86	48.34	8883
TxPol: HHVV, PRF: 20 10 20 10 kHz	vh/hh (dB)	-NaN	4.85	-14.17	-7.00	520.
Range: Delay 75m, Spacing 15m, Gates 80	hv/vv (dB)	-NaN	-2.25	-32.73	-23.02	936.
Ave. Pulses: 108, Rng/Prof Aspect@90m/s: 4.6	hn/jmp (dB)	-1.94	1.93	0.15	-9.14	11.8
	vn/jmp (dB)	-1.59	2.67	0.16	-8.89	12.5



IHOP 2002 (dual-antenna config, modes 1,3,4,7) Data (cal: 49.0,50.0)

W2002-05-29-16-52-15 - PPMAG4  
 IRIG:1,UTC: 16:51:56.94 to 17:48:51.00, Dur: 3415s  
 TimeLngth: 3415.06s, TimeInt: 35ms (27.9pps)  
 TimeCor=-13.0s, DSPDif(mn,mx,min):35,35,199  
 PPS(min,max,std): 23,29,1.14  
 Prof: 375 to 95530, NumProf(t/r): 95155/10844  
 ProcTime/Recs: 17:37:20-17:43:49/75908-86751  
 MxACQtime: 43ms; DRate: 125.5KB/s; Flags: 0, 0, 0  
 Pulse: 275ns, IFfilt: 5.0MHz; ppPol: HH HV VV  
 TxPol: HHVV, PRF: 20 10 20 10 kHz  
 Range: Delay 75m, Spacing 15m, Gates 80  
 Ave. Pulses: 108, Rng/Prof Aspect@90m/s: 4.6

	Min	Max	Mean	Std	Varc%
hhN(dB)	-66.72	-63.44	-65.15	-75.33	9.6
vvN(dB)	-66.55	-61.13	-64.30	-71.87	17.5
hhL(dB)	-17.90	-8.41	-11.81	-14.80	50.3
vvL(dB)	-27.56	-11.82	-16.45	-18.80	58.2
ppN(m/s)	-12.39	12.28	0.27	4.19	
ppT(m/s)	-97.87	97.02	2.15	33.14	
hh/vv(dB)	-NaN	71.15	18.86	48.34	8883
vh/hh(dB)	-NaN	4.85	-14.17	-7.00	520.
hv/vv(dB)	-NaN	-2.25	-32.73	-23.02	936.
hnjmp(dB)	-1.94	1.93	0.15	-9.14	11.8
vnjmp(dB)	-1.59	2.67	0.16	-8.89	12.5



IHOP 2002 (dual-antenna config, modes 1,3,4,7) Data (cal: 49.0,50.0)

W2002-05-29-16-52-15 - PPMAG4  
 IRIG:1,UTC: 16:51:56.94 to 17:48:51.00, Dur: 3415s  
 TimeLngth: 3415.06s, TimeInt: 35ms (27.9pps)  
 TimeCor=-13.0s, DSPDif(mn,mx,min):35,35,199  
 PPS(min,max,std): 23,29,1.14  
 Prof: 375 to 95530, NumProf(t/r): 95155/10844  
 ProcTime/Recs: 17:37:20-17:43:49/75908-86751  
 MxACQtime: 43ms; DRate: 125.5KB/s; Flags: 0, 0, 0  
 Pulse: 275ns, IFfilt: 5.0MHz; ppPol: HH HV VV  
 TxPol: HHVV, PRF: 20 10 20 10 kHz  
 Range: Delay 75m, Spacing 15m, Gates 80  
 Ave. Pulses: 108, Rng/Prof Aspect@90m/s: 4.6

	Min	Max	Mean	Std	Varc%
hhN(dB)	-66.72	-63.44	-65.15	-75.33	9.6
vvN(dB)	-66.55	-61.13	-64.30	-71.87	17.5
hhL(dB)	-17.90	-8.41	-11.81	-14.80	50.3
vvL(dB)	-27.56	-11.82	-16.45	-18.80	58.2
ppN(m/s)	-12.39	12.28	0.27	4.19	
ppT(m/s)	-97.87	97.02	2.15	33.14	
hh/vv(dB)	-NaN	71.15	18.86	48.34	8883
vh/hh(dB)	-NaN	4.85	-14.17	-7.00	520.
hv/vv(dB)	-NaN	-2.25	-32.73	-23.02	936.
hnjmp(dB)	-1.94	1.93	0.15	-9.14	11.8
vnjmp(dB)	-1.59	2.67	0.16	-8.89	12.5