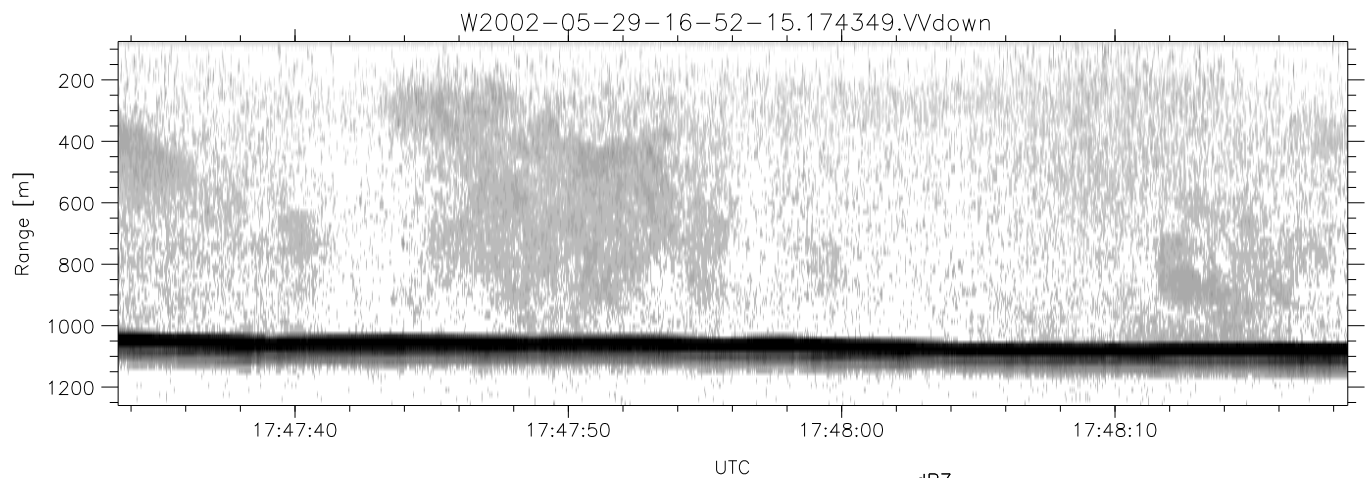
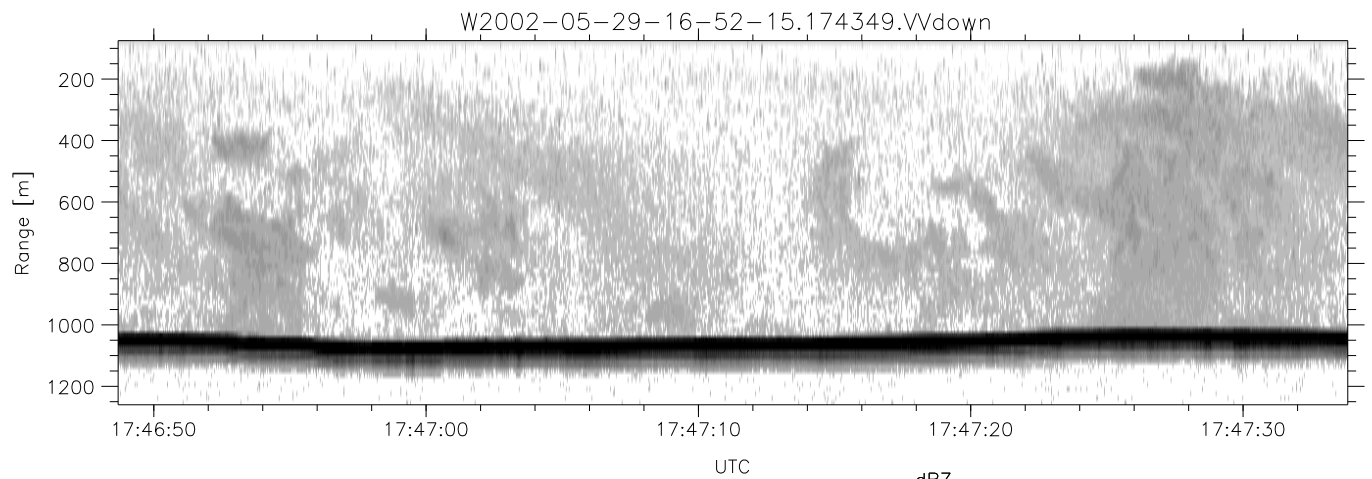
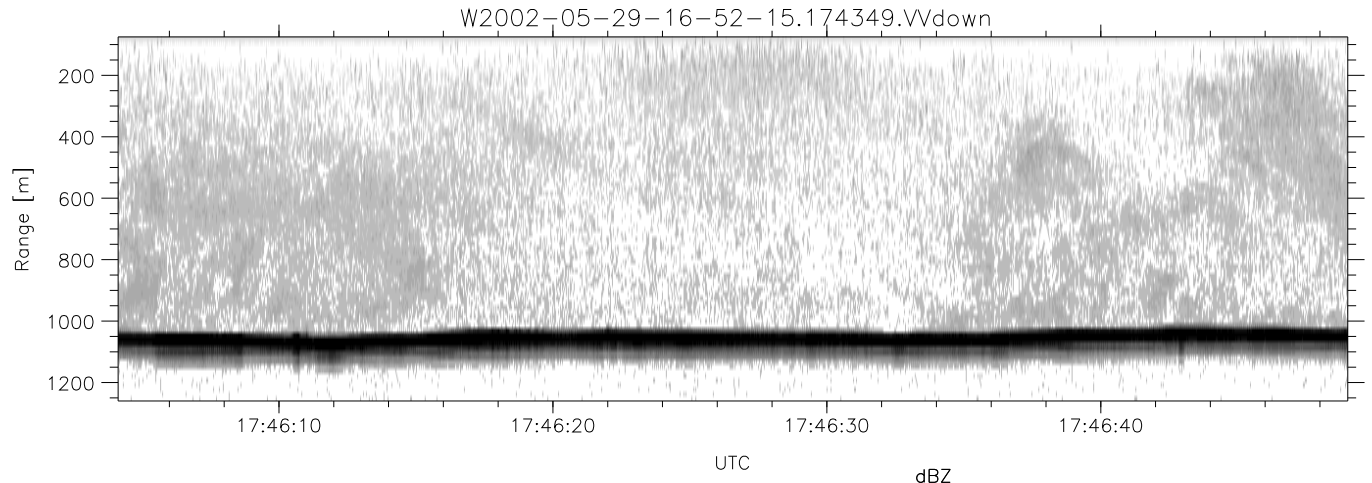


IHOP 2002 (dual-antenna config, modes 1,3,4,7) Data (cal: 49.0,50.0)

W2002-05-29-16-52-15 - PPMAG4  
 IRIG:1,UTC: 16:51:56.94 to 17:48:51.00, Dur: 3415s  
 TimeLngth: 3415.06s, TimeInt: 35ms (27.9pps)  
 TimeCor=-13.0s, DSPDif(mn,mx,min):35,35,182  
 PPS(min,max,std): 21,29,1.22  
 Prof: 375 to 95530, NumProf(t/r): 95155/8403  
 ProcTime/Recs: 17:43:49-17:48:51/86752-95154  
 MxACQtime: 43ms; DRate: 125.5KB/s; Flags: 0, 0, 0  
 Pulse: 275ns, IFfilt: 5.0MHz; ppPol: HH HV VV  
 TxPol: HHVV, PRF: 20 10 20 10 kHz  
 Range: Delay 75m, Spacing 15m, Gates 80  
 Ave. Pulses: 108, Rng/Prof Aspect@90m/s: 4.6

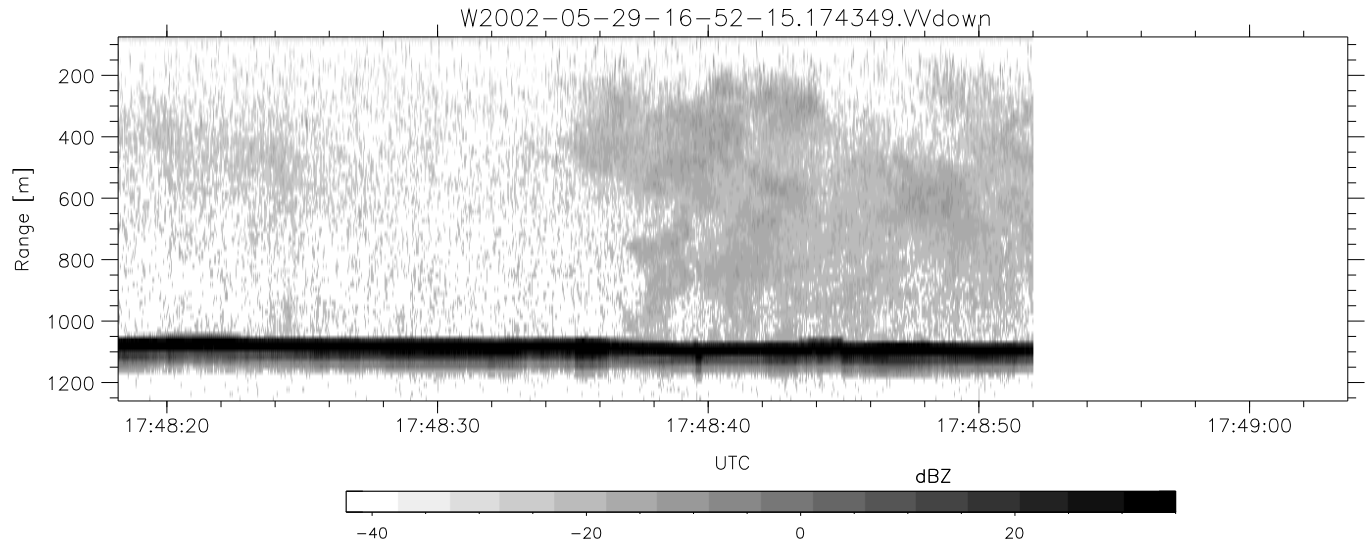
	Min	Max	Mean	Std	Varc%
hhN(dB)	-66.83	-63.62	-65.24	-75.69	9.0
vvN(dB)	-65.83	-61.55	-64.24	-73.90	10.8
hhL(dB)	-15.64	-10.31	-12.37	-17.33	31.9
vvL(dB)	-32.84	-17.49	-21.59	-23.11	70.5
ppN(m/s)	-12.51	12.35	0.05	4.13	
ppT(m/s)	-98.82	97.58	0.42	32.59	
hh/vv(dB)	-NaN	45.01	16.13	34.90	7523
vh/hh(dB)	-NaN	-30.51	-34.56	-34.58	99.6
hv/vv(dB)	-NaN	-32.91	-48.28	-45.05	210.
hnjmp(dB)	-1.83	1.98	0.14	-9.00	12.2
vnjmp(dB)	-1.71	1.79	0.15	-9.00	12.2



IHOP 2002 (dual-antenna config, modes 1,3,4,7) Data (cal: 49.0,50.0)

W2002-05-29-16-52-15 - PPMAG4  
 IRIG:1,UTC: 16:51:56.94 to 17:48:51.00, Dur: 3415s  
 TimeLngth: 3415.06s, TimeInt: 35ms (27.9pps)  
 TimeCor=-13.0s, DSPDif(mn,mx,min):35,35,182  
 PPS(min,max,std): 21,29,1.22  
 Prof: 375 to 95530, NumProf(t/r): 95155/8403  
 ProcTime/Recs: 17:43:49-17:48:51/86752-95154  
 MxACQtime: 43ms; DRate: 125.5KB/s; Flags: 0, 0, 0  
 Pulse: 275ns, IFfilt: 5.0MHz; ppPol: HH HV VV  
 TxPol: HHVV, PRF: 20 10 20 10 kHz  
 Range: Delay 75m, Spacing 15m, Gates 80  
 Ave. Pulses: 108, Rng/Prof Aspect@90m/s: 4.6

	Min	Max	Mean	Std	Varc%
hhN(dB)	-66.83	-63.62	-65.24	-75.69	9.0
vvN(dB)	-65.83	-61.55	-64.24	-73.90	10.8
hhL(dB)	-15.64	-10.31	-12.37	-17.33	31.9
vvL(dB)	-32.84	-17.49	-21.59	-23.11	70.5
ppN(m/s)	-12.51	12.35	0.05	4.13	
ppT(m/s)	-98.82	97.58	0.42	32.59	
hh/vv(dB)	-NaN	45.01	16.13	34.90	7523
vh/hh(dB)	-NaN	-30.51	-34.56	-34.58	99.6
hv/vv(dB)	-NaN	-32.91	-48.28	-45.05	210.
hnjmp(dB)	-1.83	1.98	0.14	-9.00	12.2
vnjmp(dB)	-1.71	1.79	0.15	-9.00	12.2



IHOP 2002 (dual-antenna config, modes 1,3,4,7) Data (cal: 49.0,50.0)

W2002-05-29-16-52-15 - PPMAG4						
IRIG:1,UTC: 16:51:56.94 to 17:48:51.00, Dur: 3415s	hhN(dB)	Min	Max	Mean	Std	Varc%
TimeLngth: 3415.06s, TimeInt: 35ms (27.9pps)	vvN(dB)	-66.83	-63.62	-65.24	-75.69	9.0
TimeCor=-13.0s, DSPDif(mn,mx,min):35,35,182	hhL(dB)	-65.83	-61.55	-64.24	-73.90	10.8
PPS(min,max,std): 21,29,1.22	vvL(dB)	-15.64	-10.31	-12.37	-17.33	31.9
Prof: 375 to 95530, NumProf(t/r): 95155/8403	ppN(m/s)	-32.84	-17.49	-21.59	-23.11	70.5
ProcTime/Recs: 17:43:49-17:48:51/86752-95154	ppT(m/s)	-12.51	12.35	0.05	4.13	
MxACQtime: 43ms; DRate: 125.5KB/s; Flags: 0, 0, 0	hh/vv(dB)	-98.82	97.58	0.42	32.59	
Pulse: 275ns, IFilt: 5.0MHz; ppPol: HH HV VV	vh/hh(dB)	-NaN	45.01	16.13	34.90	7523
TxPol: HHVV, PRF: 20 10 20 10 kHz	hv/vv(dB)	-NaN	-30.51	-34.56	-34.58	99.6
Range: Delay 75m, Spacing 15m, Gates 80	hn/vv(dB)	-NaN	-32.91	-48.28	-45.05	210.
Ave. Pulses: 108, Rng/Prof Aspect@90m/s: 4.6	hn/jmp(dB)	-1.83	1.98	0.14	-9.00	12.2
	vn/jmp(dB)	-1.71	1.79	0.15	-9.00	12.2