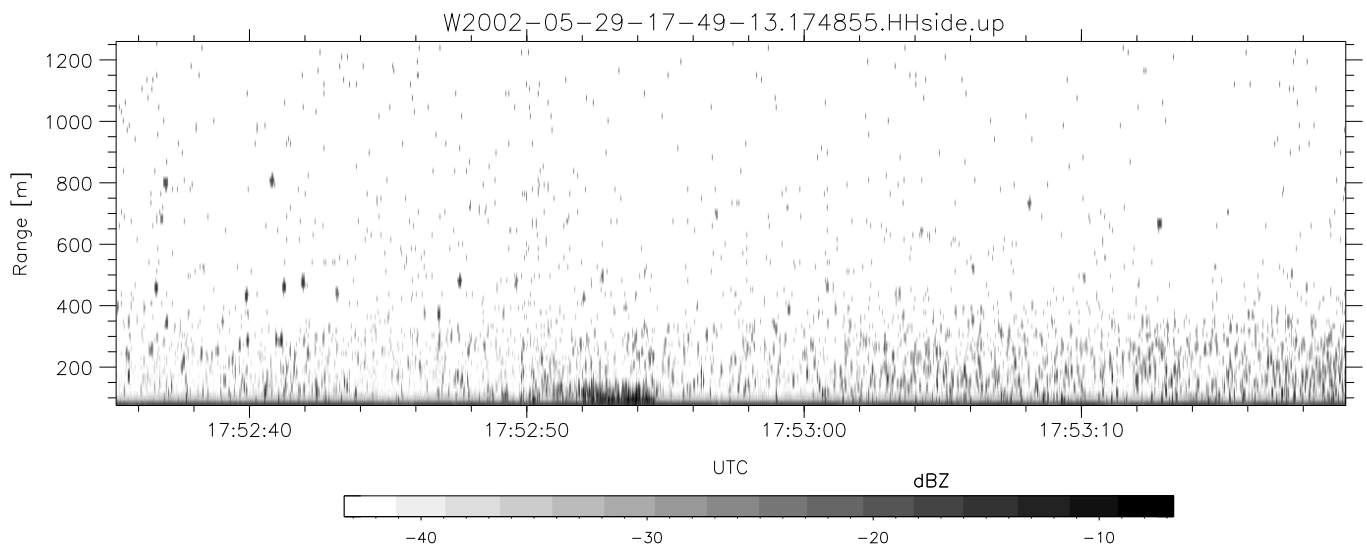
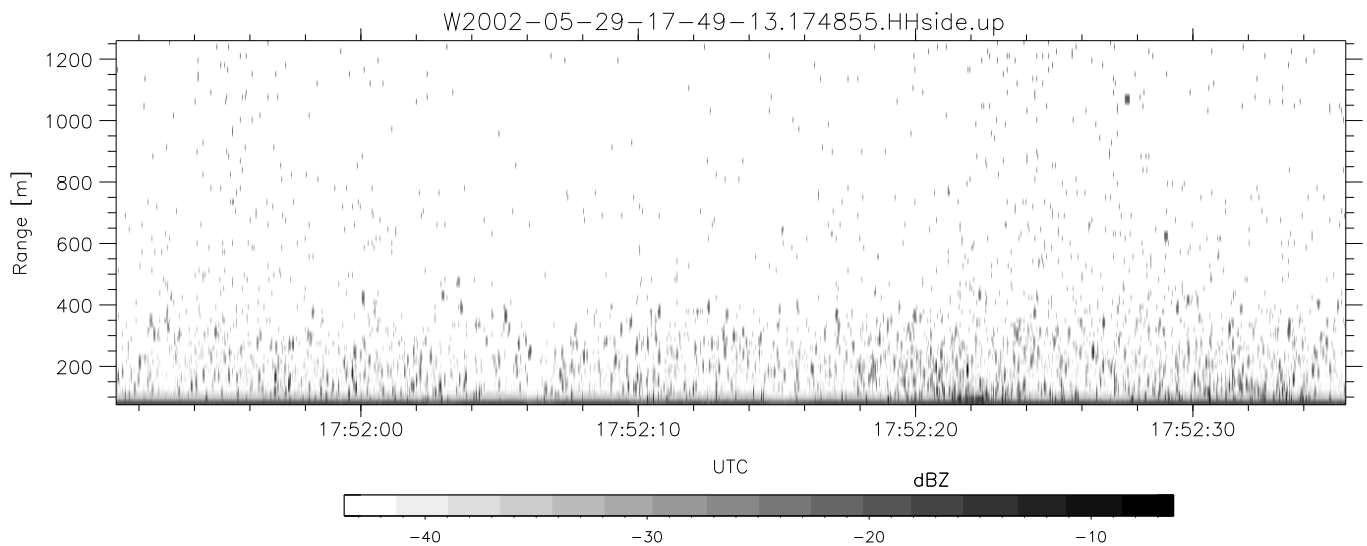
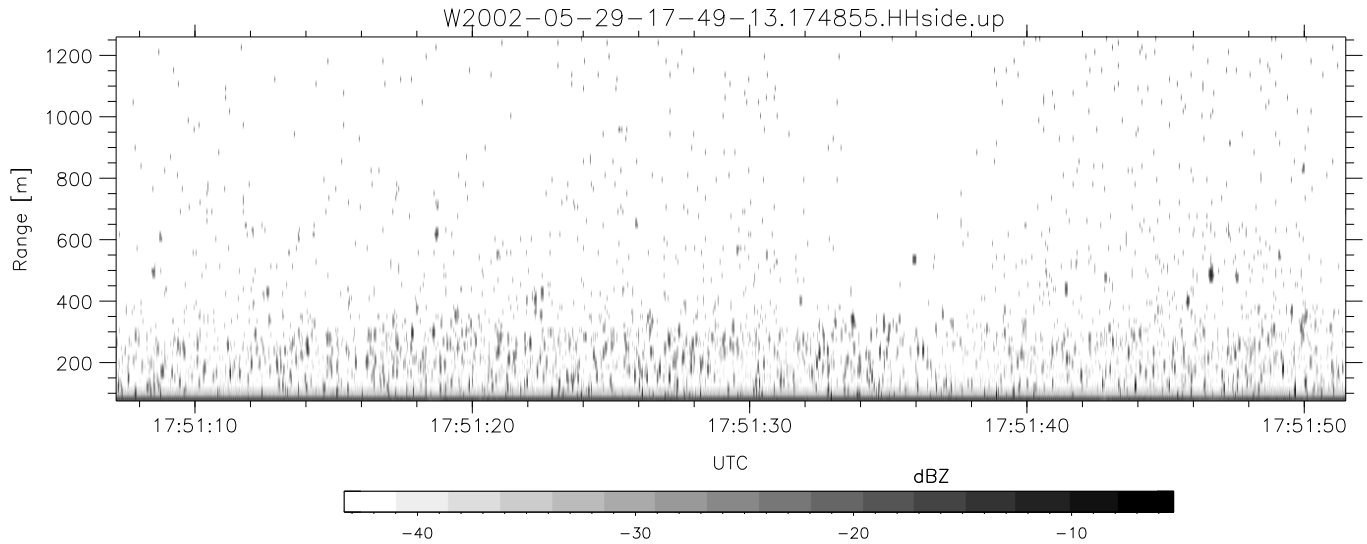


IHOP 2002 (dual-antenna config, modes 1,3,4,7) Data (cal: 49.0,50.0)

W2002-05-29-17-49-13 - PPMAG4
 IRIG:1,UTC: 17:48:55.12 to 19:39:20.99, Dur: 6625s
 TimeLngth: 6625.87s, TimeInt: 35ms (27.8pps)
 TimeCor=-13.0s, DSPDif(mn,mx,min):35,35,48
 PPS(min,max,std): 28,29,0.40
 Prof: 30081 to 214206, NumProf(t/r): 184125/10844
 ProcTime/Recs: 17:48:55-17:55:19/0-10843
 MxACQtime: 43ms; DRate: 125.2KB/s; Flags: 0, 0, 0
 Pulse: 275ns, IFfilt: 5.0MHz; ppPol: HH HV VV
 TxPol: HHVV, PRF: 20 10 20 10 kHz
 Range: Delay 75m, Spacing 15m, Gates 80
 Ave. Pulses: 108, Rng/Prof Aspect@90m/s: 4.6

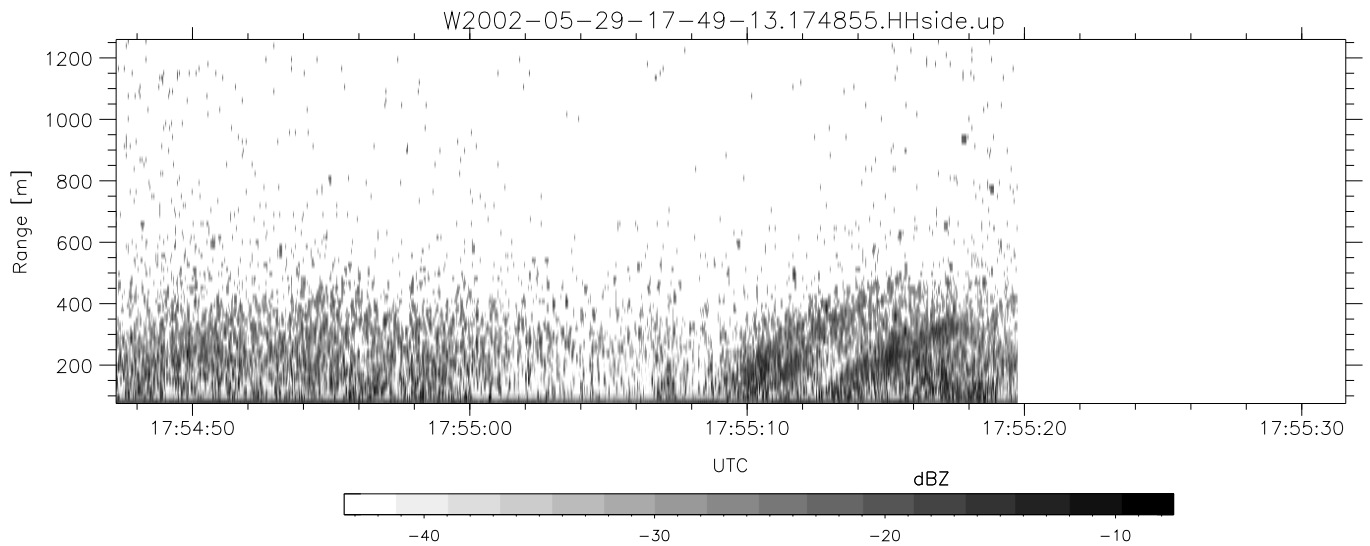
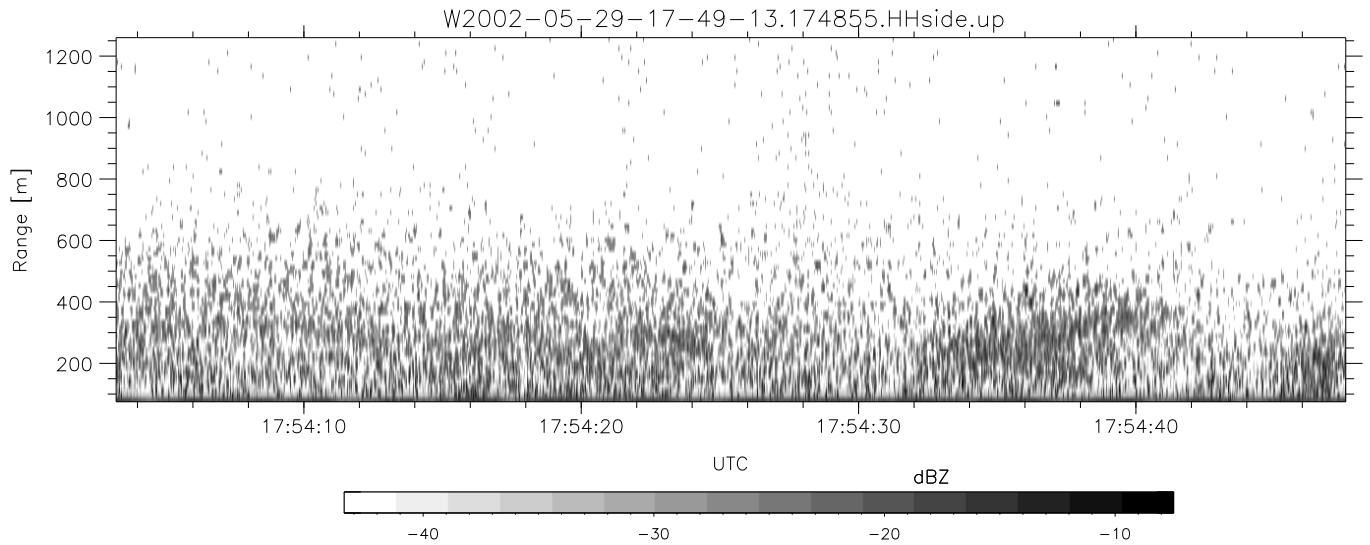
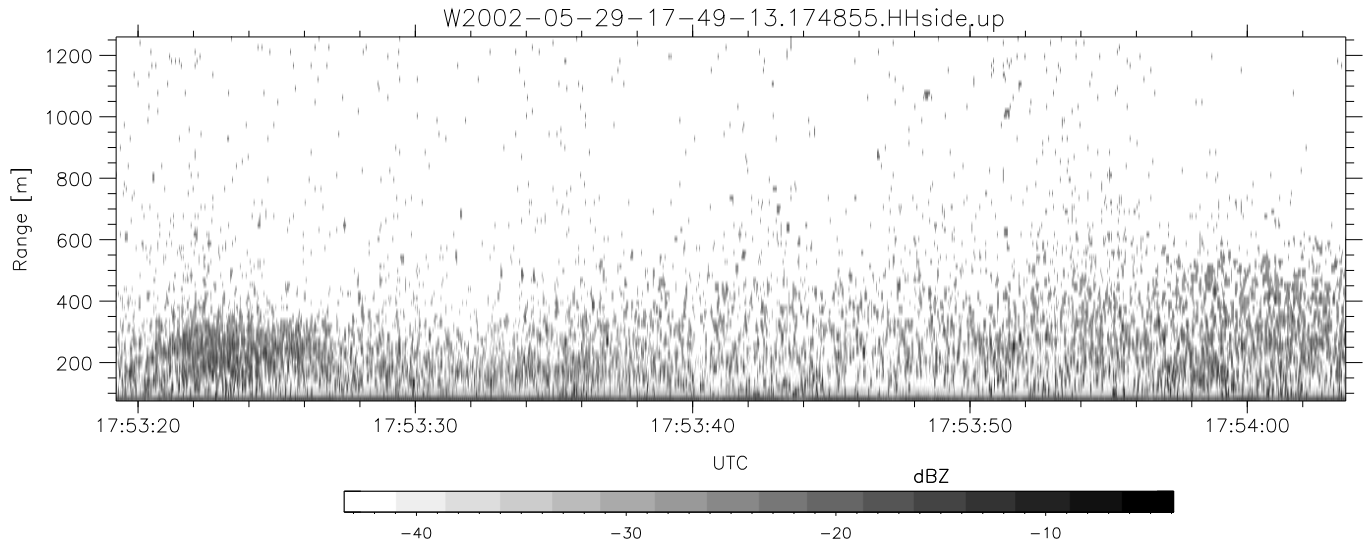
	Min	Max	Mean	Std	Varc%
hhN(dB)	-66.80	-63.97	-65.29	-75.88	8.7
vvN(dB)	-65.63	-62.53	-63.98	-74.18	9.6
hhL(dB)	-17.11	-9.40	-11.43	-18.20	21.0
vvL(dB)	-33.37	-11.31	-19.63	-18.51	129.
ppN(m/s)	-12.22	12.45	0.07	4.15	
ppT(m/s)	-96.52	98.38	0.58	32.80	
hh/vv(dB)	-NaN	54.59	16.67	36.25	9082
vh/hh(dB)	-NaN	-29.12	-33.75	-34.16	90.8
hv/vv(dB)	-NaN	-35.55	-49.23	-46.89	171.
hnjmp(dB)	-1.96	1.92	0.14	-8.93	12.4
vnjmp(dB)	-1.68	2.21	0.14	-8.85	12.6



IHOP 2002 (dual-antenna config, modes 1,3,4,7) Data (cal: 49.0,50.0)

W2002-05-29-17-49-13 - PPMAG4
 IRIG:1,UTC: 17:48:55.12 to 19:39:20.99, Dur: 6625s
 TimeLngth: 6625.87s, TimeInt: 35ms (27.8pps)
 TimeCor=-13.0s, DSPDif(mn,mx,min):35,35,48
 PPS(min,max,std): 28,29,0.40
 Prof: 30081 to 214206, NumProf(t/r): 184125/10844
 ProcTime/Recs: 17:48:55-17:55:19/0-10843
 MxACQtime: 43ms; DRate: 125.2KB/s; Flags: 0, 0, 0
 Pulse: 275ns, IFilt: 5.0MHz; ppPol: HH HV VV
 TxPol: HHVV, PRF: 20 10 20 10 kHz
 Range: Delay 75m, Spacing 15m, Gates 80
 Ave. Pulses: 108, Rng/Prof Aspect@90m/s: 4.6

	Min	Max	Mean	Std	Varc%
hhN(dB)	-66.80	-63.97	-65.29	-75.88	8.7
vvN(dB)	-65.63	-62.53	-63.98	-74.18	9.6
hhL(dB)	-17.11	-9.40	-11.43	-18.20	21.0
vvL(dB)	-33.37	-11.31	-19.63	-18.51	129.
ppN(m/s)	-12.22	12.45	0.07	4.15	
ppT(m/s)	-96.52	98.38	0.58	32.80	
hh/vv(dB)	-NaN	54.59	16.67	36.25	9082
vh/hh(dB)	-NaN	-29.12	-33.75	-34.16	90.8
hv/vv(dB)	-NaN	-35.55	-49.23	-46.89	171.
hh_jmp(dB)	-1.96	1.92	0.14	-8.93	12.4
vv_jmp(dB)	-1.68	2.21	0.14	-8.85	12.6



IHOP 2002 (dual-antenna config, modes 1,3,4,7) Data (cal: 49.0,50.0)

	Min	Max	Mean	Std	Varc%
W2002-05-29-17-49-13 - PPMAG4					
IRIG:1,UTC: 17:48:55.12 to 19:39:20.99, Dur: 6625s	hhN (dB)	-66.80 -63.97	-65.29	-75.88	8.7
TimeLngth: 6625.87s, TimeInt: 35ms (27.8pps)	vvN (dB)	-65.63 -62.53	-63.98	-74.18	9.6
TimeCor=-13.0s, DSPDif(mn,mx,min):35,35,48	hhL (dB)	-17.11 -9.40	-11.43	-18.20	21.0
PPS(min,max,std): 28,29,0.40	vvL (dB)	-33.37 -11.31	-19.63	-18.51	129.
Prof: 30081 to 214206, NumProf(t/r): 184125/10844	ppN (m/s)	-12.22 12.45	0.07	4.15	
ProcTime/Recs: 17:48:55-17:55:19/0-10843	ppT (m/s)	-96.52 98.38	0.58	32.80	
MxACQtime: 43ms; DRate: 125.2KB/s; Flags: 0, 0, 0	hh/vv (dB)	-NaN 54.59	16.67	36.25	9082
Pulse: 275ns, IFfilt: 5.0MHz; ppPol: HH HV VV	vh/hh (dB)	-NaN -29.12	-33.75	-34.16	90.8
TxPol: HHVV, PRF: 20 10 20 10 kHz	hv/vv (dB)	-NaN -35.55	-49.23	-46.89	171.
Range: Delay 75m, Spacing 15m, Gates 80	hn_jmp (dB)	-1.96 1.92	0.14	-8.93	12.4
Ave. Pulses: 108, Rng/Prof Aspect@90m/s: 4.6	vn_jmp (dB)	-1.68 2.21	0.14	-8.85	12.6