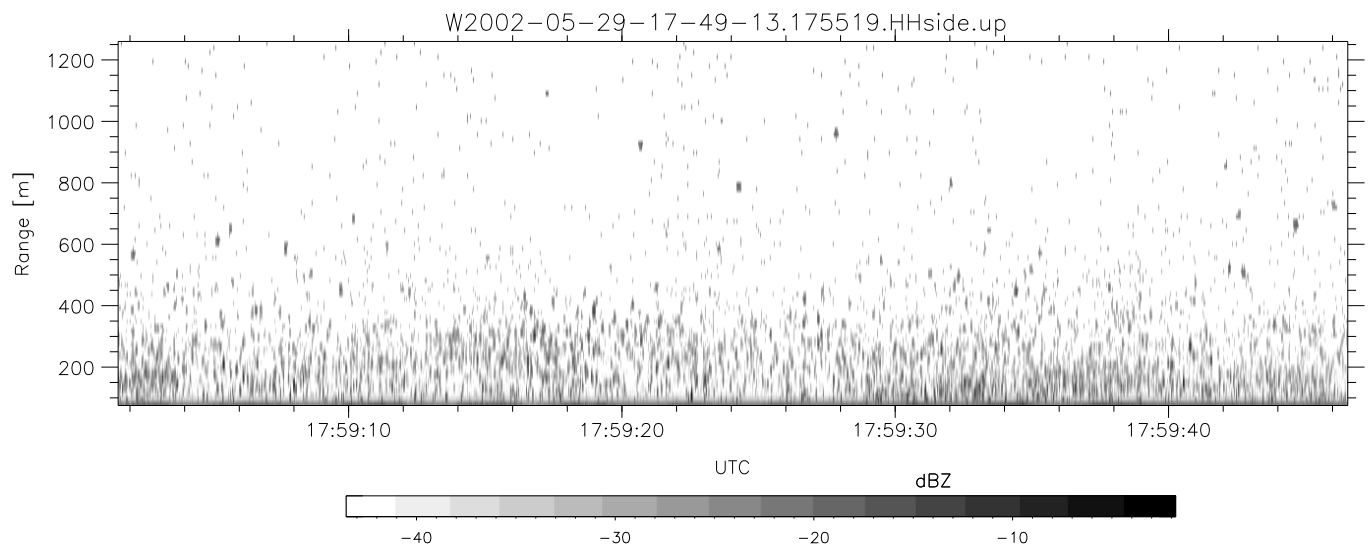
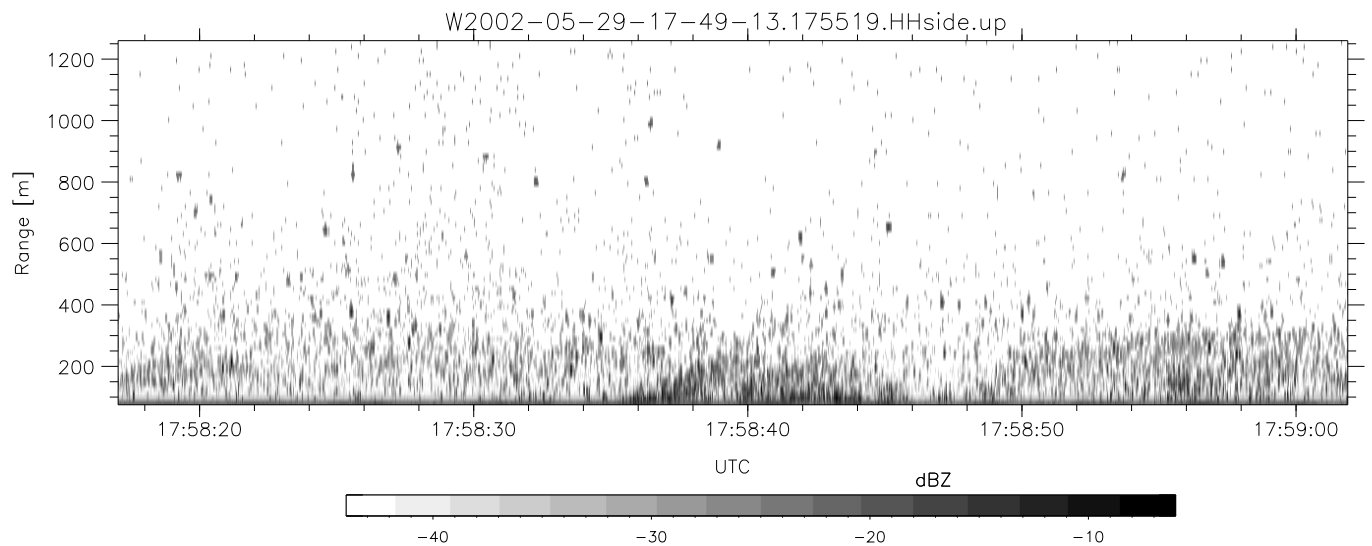
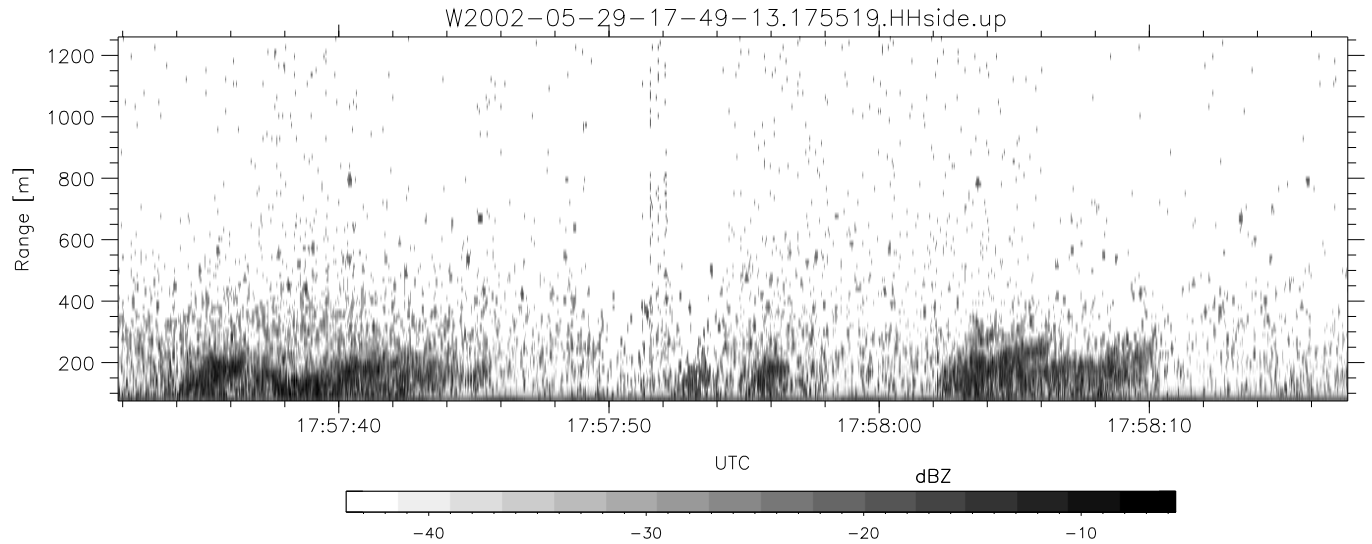


IHOP 2002 (dual-antenna config, modes 1,3,4,7) Data (cal: 49.0,50.0)

W2002-05-29-17-49-13 - PPMAG4
 IRIG:1,UTC: 17:48:55.12 to 19:39:20.99, Dur: 6625s
 TimeLngth: 6625.87s, TimeInt: 35ms (27.8pps)
 TimeCor=-13.0s, DSPDif(mn,mx,min):35,35,384
 PPS(min,max,std): 16,29,1.21
 Prof: 30081 to 214206, NumProf(t/r): 184125/10844
 ProcTime/Recs: 17:55:19-18:01:48/10844-21687
 MxACQtime: 43ms; DRate: 125.2KB/s; Flags: 0, 0, 0
 Pulse: 275ns, IFfilt: 5.0MHz; ppPol: HH HV VV
 TxPol: HHVV, PRF: 20 10 20 10 kHz
 Range: Delay 75m, Spacing 15m, Gates 80
 Ave. Pulses: 108, Rng/Prof Aspect@90m/s: 4.6

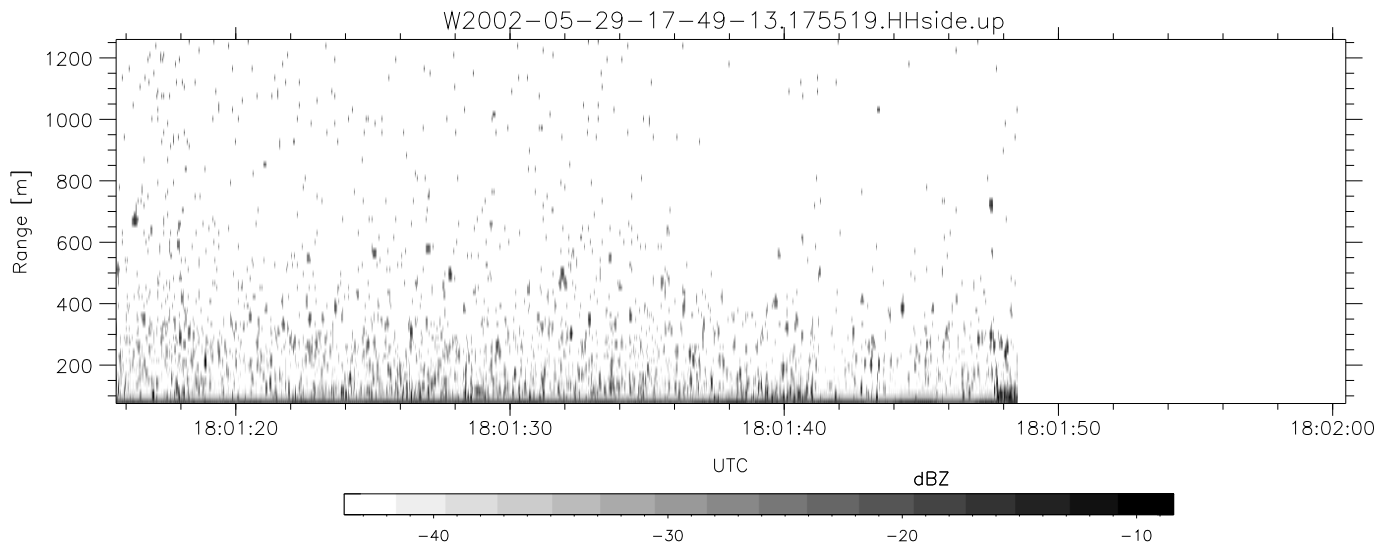
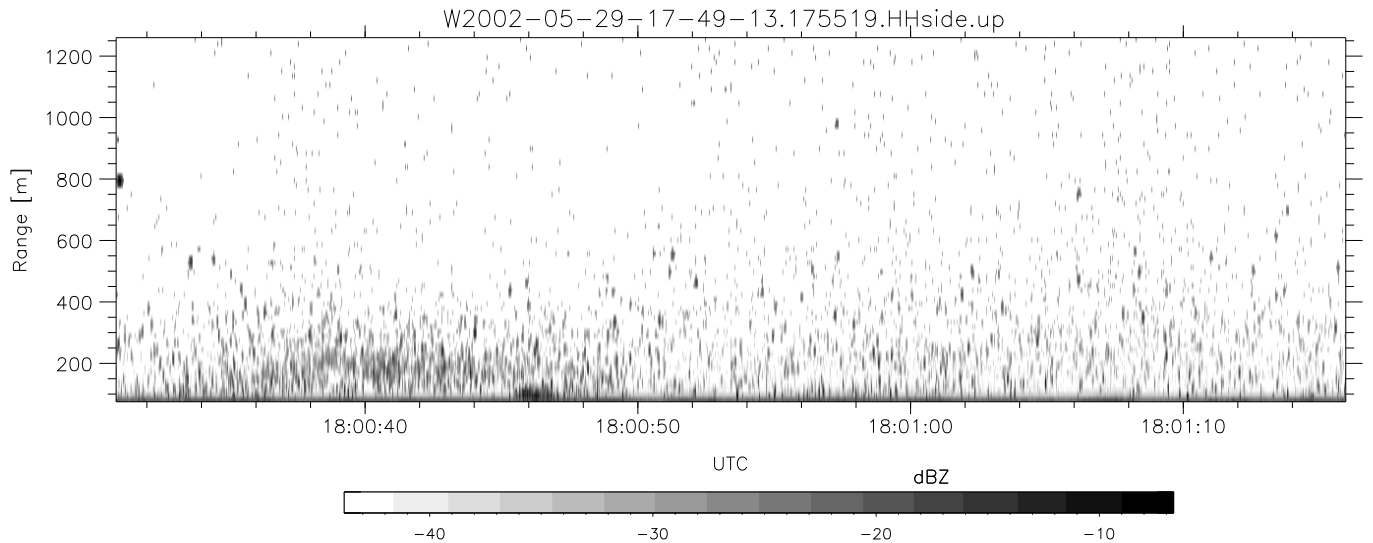
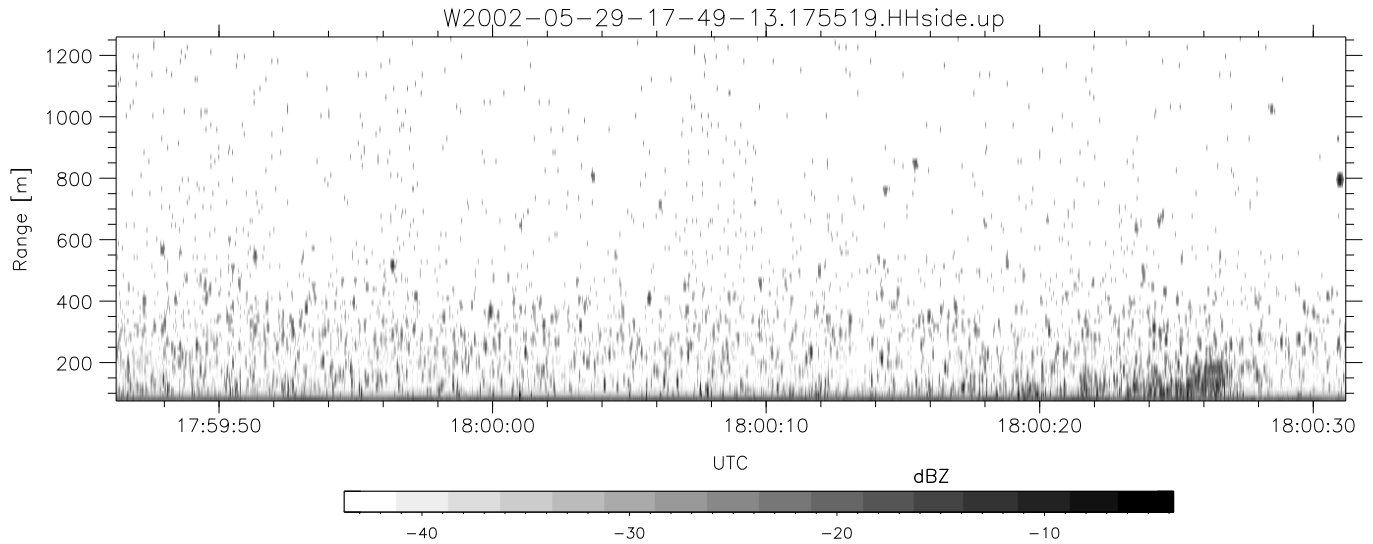
| | Min | Max | Mean | Std | Varc% |
|-----------|--------|--------|--------|--------|-------|
| hhN(dB) | -66.81 | -62.65 | -65.30 | -75.72 | 9.1 |
| vvN(dB) | -65.70 | -60.25 | -63.89 | -73.11 | 12.0 |
| hhL(dB) | -19.40 | -9.59 | -13.17 | -17.97 | 33.1 |
| vvL(dB) | -21.20 | -10.85 | -13.82 | -19.10 | 29.6 |
| ppN(m/s) | -12.57 | 12.77 | 0.01 | 4.17 | |
| ppT(m/s) | -99.30 | 100.91 | 0.05 | 32.93 | |
| hh/vv(dB) | -NaN | 55.31 | 17.51 | 36.63 | 8178 |
| vh/hh(dB) | -NaN | -28.82 | -38.78 | -34.78 | 251. |
| hv/vv(dB) | -NaN | -30.95 | -49.01 | -46.25 | 188. |
| hnjmp(dB) | -1.79 | 1.83 | 0.14 | -9.08 | 12.0 |
| vnjmp(dB) | -2.76 | 2.10 | 0.15 | -8.91 | 12.4 |



IHOP 2002 (dual-antenna config, modes 1,3,4,7) Data (cal: 49.0,50.0)

W2002-05-29-17-49-13 - PPMAG4
 IRIG:1,UTC: 17:48:55.12 to 19:39:20.99, Dur: 6625s
 TimeLngth: 6625.87s, TimeInt: 35ms (27.8pps)
 TimeCor=-13.0s, DSPDif(mn,mx,min):35,35,384
 PPS(min,max,std): 16,29,1.21
 Prof: 30081 to 214206, NumProf(t/r): 184125/10844
 ProcTime/Recs: 17:55:19-18:01:48/10844-21687
 MxACQtime: 43ms; DRate: 125.2KB/s; Flags: 0, 0, 0
 Pulse: 275ns, IFfilt: 5.0MHz; ppPol: HH HV VV
 TxPol: HHVV, PRF: 20 10 20 10 kHz
 Range: Delay 75m, Spacing 15m, Gates 80
 Ave. Pulses: 108, Rng/Prof Aspect@90m/s: 4.6

| | Min | Max | Mean | Std | Varc% |
|------------|--------|--------|--------|--------|-------|
| hhN(dB) | -66.81 | -62.65 | -65.30 | -75.72 | 9.1 |
| vvN(dB) | -65.70 | -60.25 | -63.89 | -73.11 | 12.0 |
| hhL(dB) | -19.40 | -9.59 | -13.17 | -17.97 | 33.1 |
| vvL(dB) | -21.20 | -10.85 | -13.82 | -19.10 | 29.6 |
| ppN(m/s) | -12.57 | 12.77 | 0.01 | 4.17 | |
| ppT(m/s) | -99.30 | 100.91 | 0.05 | 32.93 | |
| hh/vv(dB) | -NaN | 55.31 | 17.51 | 36.63 | 8178 |
| vh/hh(dB) | -NaN | -28.82 | -38.78 | -34.78 | 251. |
| hv/vv(dB) | -NaN | -30.95 | -49.01 | -46.25 | 188. |
| hh_jmp(dB) | -1.79 | 1.83 | 0.14 | -9.08 | 12.0 |
| vv_jmp(dB) | -2.76 | 2.10 | 0.15 | -8.91 | 12.4 |



IHOP 2002 (dual-antenna config, modes 1,3,4,7) Data (cal: 49.0,50.0)

W2002-05-29-17-49-13 - PPMAG4
 IRIG:1,UTC: 17:48:55.12 to 19:39:20.99, Dur: 6625s
 TimeLngth: 6625.87s, TimeInt: 35ms (27.8pps)
 TimeCor=-13.0s, DSPDif(mn,mx,min):35,35,384
 PPS(min,max,std): 16,29,1.21
 Prof: 30081 to 214206, NumProf(t/r): 184125/10844
 ProcTime/Recs: 17:55:19-18:01:48/10844-21687
 MxACQtime: 43ms; DRate: 125.2KB/s; Flags: 0, 0, 0
 Pulse: 275ns, IFfilt: 5.0MHz; ppPol: HH HV VV
 TxPol: HHVV, PRF: 20 10 20 10 kHz
 Range: Delay 75m, Spacing 15m, Gates 80
 Ave. Pulses: 108, Rng/Prof Aspect@90m/s: 4.6

| | Min | Max | Mean | Std | Varc% |
|-----------|--------|--------|--------|--------|-------|
| hhN(dB) | -66.81 | -62.65 | -65.30 | -75.72 | 9.1 |
| vvN(dB) | -65.70 | -60.25 | -63.89 | -73.11 | 12.0 |
| hhL(dB) | -19.40 | -9.59 | -13.17 | -17.97 | 33.1 |
| vvL(dB) | -21.20 | -10.85 | -13.82 | -19.10 | 29.6 |
| ppN(m/s) | -12.57 | 12.77 | 0.01 | 4.17 | |
| ppT(m/s) | -99.30 | 100.91 | 0.05 | 32.93 | |
| hh/vv(dB) | -NaN | 55.31 | 17.51 | 36.63 | 8178 |
| vh/hh(dB) | -NaN | -28.82 | -38.78 | -34.78 | 251. |
| hv/vv(dB) | -NaN | -30.95 | -49.01 | -46.25 | 188. |
| hnjmp(dB) | -1.79 | 1.83 | 0.14 | -9.08 | 12.0 |
| vnjmp(dB) | -2.76 | 2.10 | 0.15 | -8.91 | 12.4 |