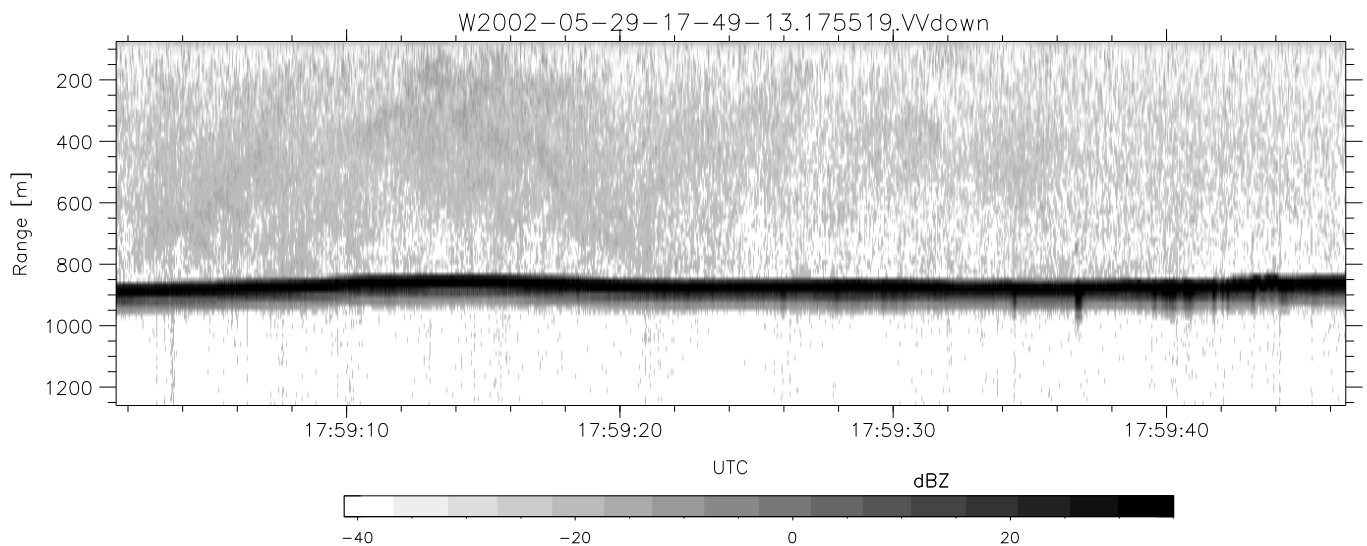
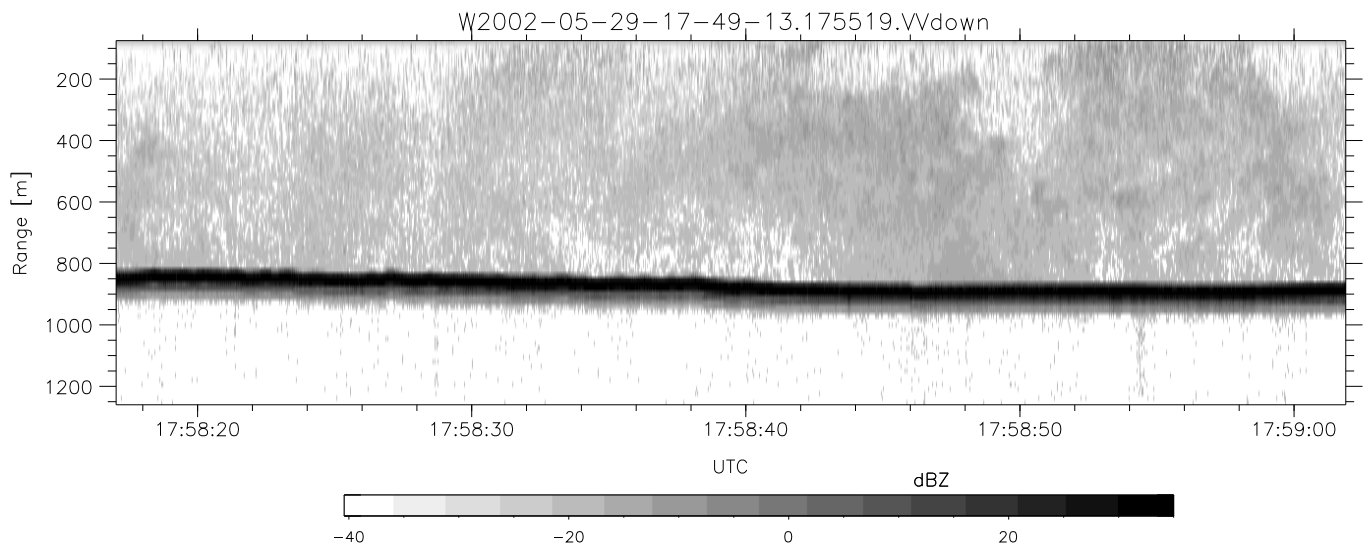
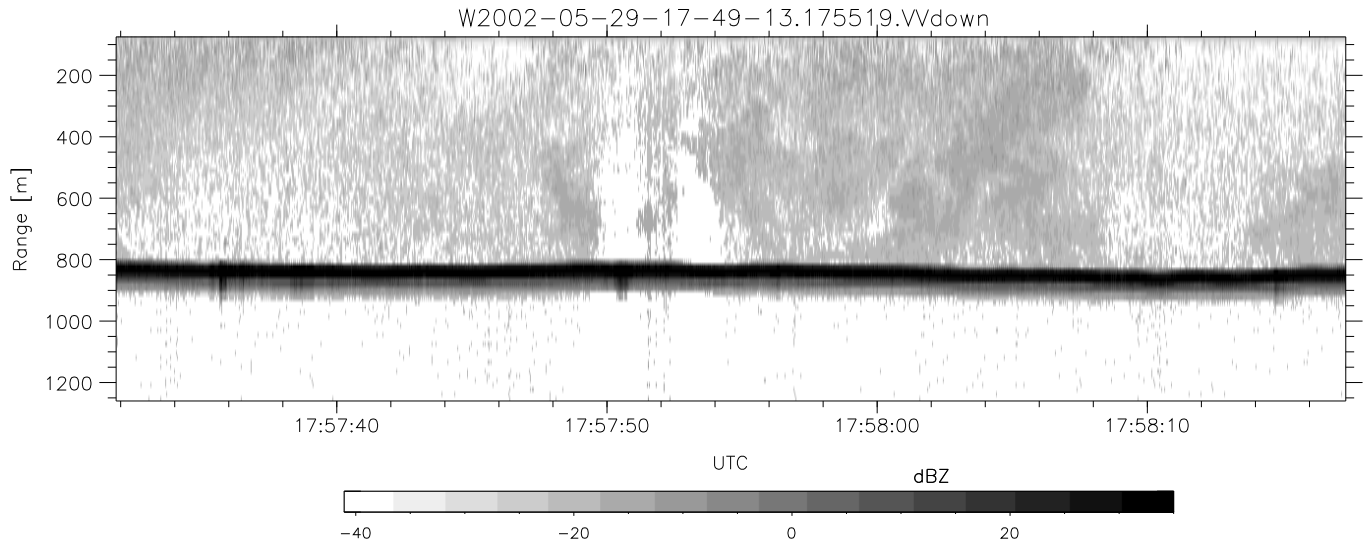


IHOP 2002 (dual-antenna config, modes 1,3,4,7) Data (cal: 49.0,50.0)

W2002-05-29-17-49-13 - PPMAG4  
 IRIG:1,UTC: 17:48:55.12 to 19:39:20.99, Dur: 6625s  
 TimeLngth: 6625.87s, TimeInt: 35ms (27.8pps)  
 TimeCor=-13.0s, DSPDif(mn,mx,min):35,35,384  
 PPS(min,max,std): 16,29,1.21  
 Prof: 30081 to 214206, NumProf(t/r): 184125/10844  
 ProcTime/Recs: 17:55:19-18:01:48/10844-21687  
 MxACQtime: 43ms; DRate: 125.2KB/s; Flags: 0, 0, 0  
 Pulse: 275ns, IFfilt: 5.0MHz; ppPol: HH HV VV  
 TxPol: HHVV, PRF: 20 10 20 10 kHz  
 Range: Delay 75m, Spacing 15m, Gates 80  
 Ave. Pulses: 108, Rng/Prof Aspect@90m/s: 4.6

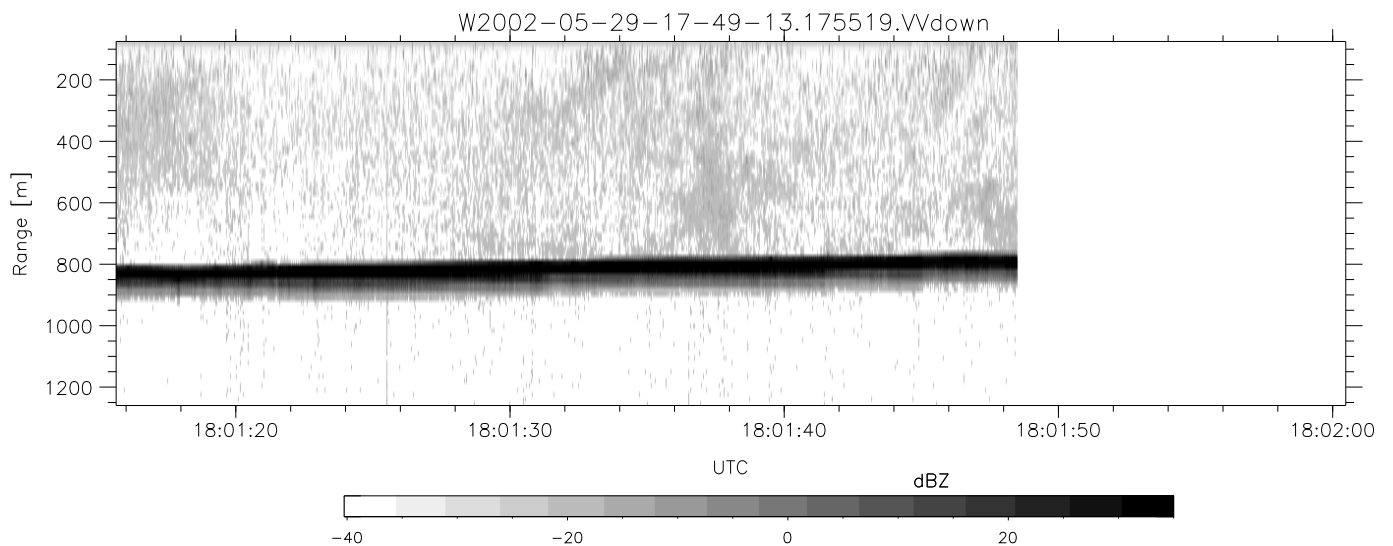
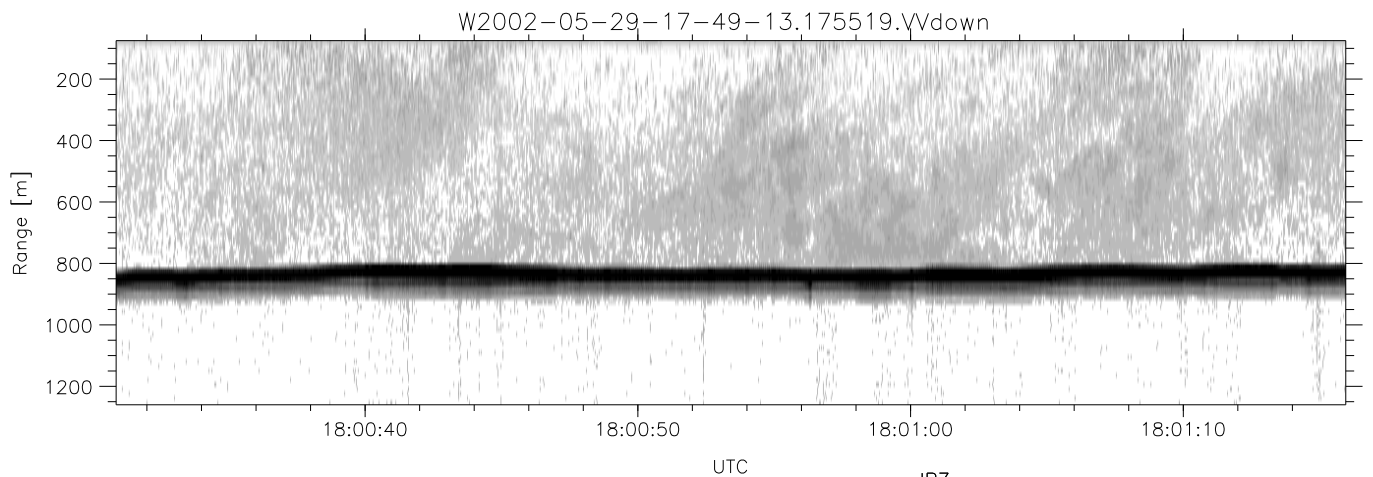
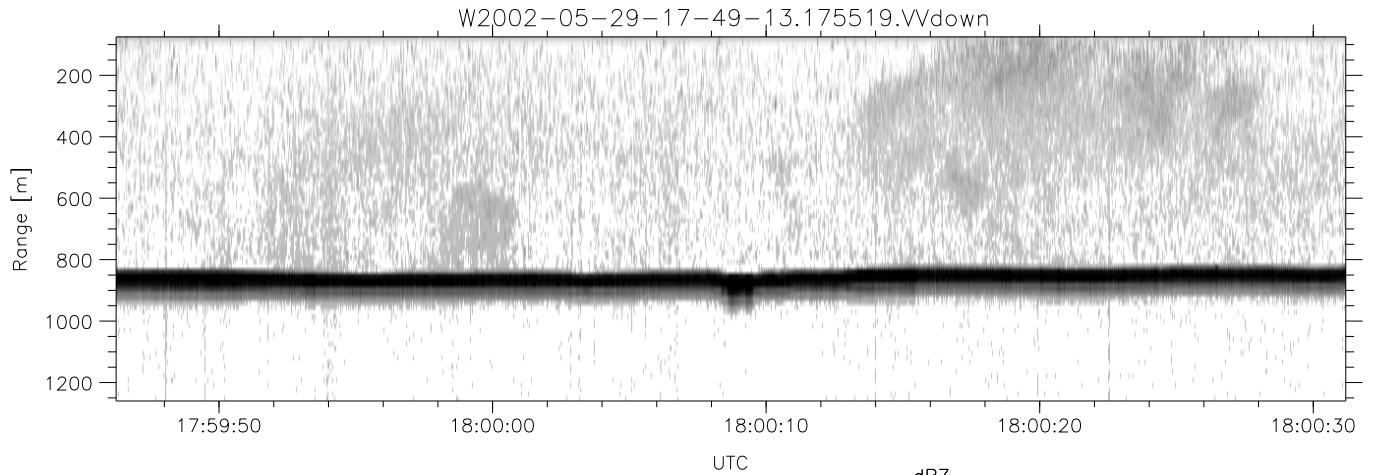
	Min	Max	Mean	Std	Varc%
hhN (dB)	-66.81	-62.65	-65.30	-75.72	9.1
vvN (dB)	-65.70	-60.25	-63.89	-73.11	12.0
hhL (dB)	-19.40	-9.59	-13.17	-17.97	33.1
vvL (dB)	-21.20	-10.85	-13.82	-19.10	29.6
ppN (m/s)	-12.57	12.77	0.01	4.17	
ppT (m/s)	-99.30	100.91	0.05	32.93	
hh/vv (dB)	-NaN	55.31	17.51	36.63	8178
vh/hh (dB)	-NaN	-28.82	-38.78	-34.78	251.
hv/vv (dB)	-NaN	-30.95	-49.01	-46.25	188.
hnjmp (dB)	-1.79	1.83	0.14	-9.08	12.0
vnjmp (dB)	-2.76	2.10	0.15	-8.91	12.4



IHOP 2002 (dual-antenna config, modes 1,3,4,7) Data (cal: 49.0,50.0)

W2002-05-29-17-49-13 - PPMAG4  
 IRIG:1,UTC: 17:48:55.12 to 19:39:20.99, Dur: 6625s  
 TimeLngth: 6625.87s, TimeInt: 35ms (27.8pps)  
 TimeCor=-13.0s, DSPDif(mn,mx,min):35,35,384  
 PPS(min,max,std): 16,29,1.21  
 Prof: 30081 to 214206, NumProf(t/r): 184125/10844  
 ProcTime/Recs: 17:55:19-18:01:48/10844-21687  
 MxACQtime: 43ms; DRate: 125.2KB/s; Flags: 0, 0, 0  
 Pulse: 275ns, IFfilt: 5.0MHz; ppPol: HH HV VV  
 TxPol: HHVV, PRF: 20 10 20 10 kHz  
 Range: Delay 75m, Spacing 15m, Gates 80  
 Ave. Pulses: 108, Rng/Prof Aspect@90m/s: 4.6

	Min	Max	Mean	Std	Varc%
hhN(dB)	-66.81	-62.65	-65.30	-75.72	9.1
vvN(dB)	-65.70	-60.25	-63.89	-73.11	12.0
hhL(dB)	-19.40	-9.59	-13.17	-17.97	33.1
vvL(dB)	-21.20	-10.85	-13.82	-19.10	29.6
ppN(m/s)	-12.57	12.77	0.01	4.17	
ppT(m/s)	-99.30	100.91	0.05	32.93	
hh/vv(dB)	-NaN	55.31	17.51	36.63	8178
vh/hh(dB)	-NaN	-28.82	-38.78	-34.78	251.
hv/vv(dB)	-NaN	-30.95	-49.01	-46.25	188.
hh/jmp(dB)	-1.79	1.83	0.14	-9.08	12.0
vv/jmp(dB)	-2.76	2.10	0.15	-8.91	12.4



IHOP 2002 (dual-antenna config, modes 1,3,4,7) Data (cal: 49.0,50.0)

W2002-05-29-17-49-13 - PPMAG4	Min	Max	Mean	Std	Varc%	
IRIG:1,UTC: 17:48:55.12 to 19:39:20.99, Dur: 6625s	hhN (dB)	-66.81	-62.65	-65.30	-75.72	9.1
TimeLngth: 6625.87s, TimeInt: 35ms (27.8pps)	vvN (dB)	-65.70	-60.25	-63.89	-73.11	12.0
TimeCor=-13.0s, DSPDif(mn,mx,min):35,35,384	hhL (dB)	-19.40	-9.59	-13.17	-17.97	33.1
PPS(min,max,std): 16,29,1.21	vvL (dB)	-21.20	-10.85	-13.82	-19.10	29.6
Prof: 30081 to 214206, NumProf(t/r): 184125/10844	ppN (m/s)	-12.57	12.77	0.01	4.17	
ProcTime/Recs: 17:55:19-18:01:48/10844-21687	ppT (m/s)	-99.30	100.91	0.05	32.93	
MxACQtime: 43ms; DRate: 125.2KB/s; Flags: 0, 0, 0	hh/vv (dB)	-NaN	55.31	17.51	36.63	8178
Pulse: 275ns, IFfilt: 5.0MHz; ppPol: HH HV VV	vh/hh (dB)	-NaN	-28.82	-38.78	-34.78	251.
TxPol: HHVV, PRF: 20 10 20 10 kHz	hv/vv (dB)	-NaN	-30.95	-49.01	-46.25	188.
Range: Delay 75m, Spacing 15m, Gates 80	hnjmp (dB)	-1.79	1.83	0.14	-9.08	12.0
Ave. Pulses: 108, Rng/Prof Aspect@90m/s: 4.6	vnjmp (dB)	-2.76	2.10	0.15	-8.91	12.4