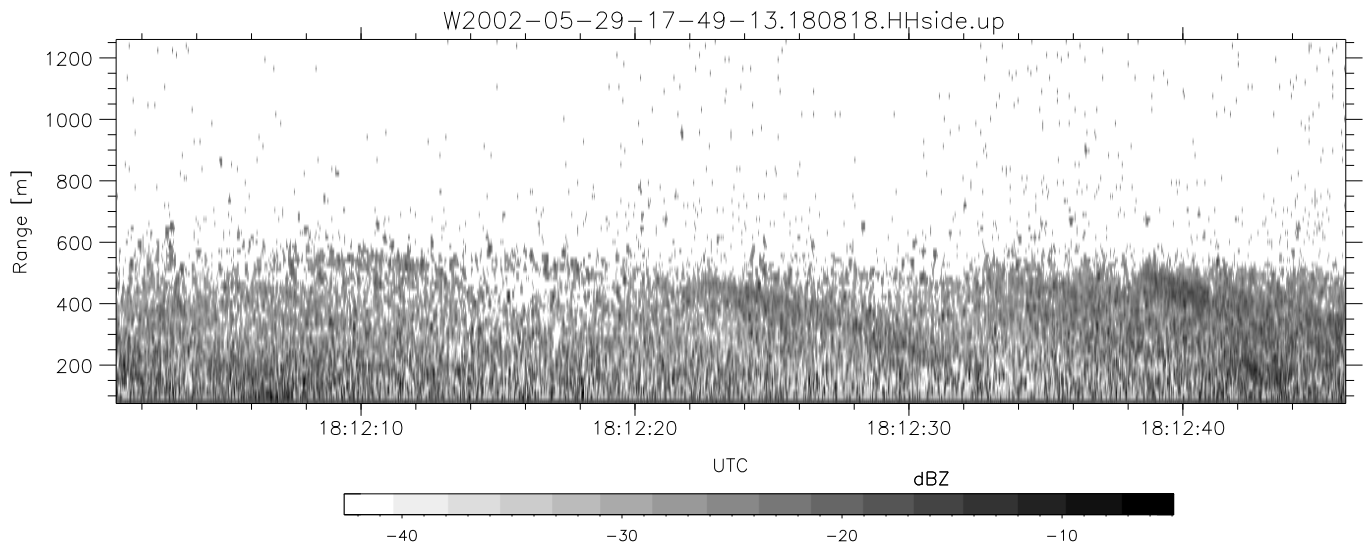
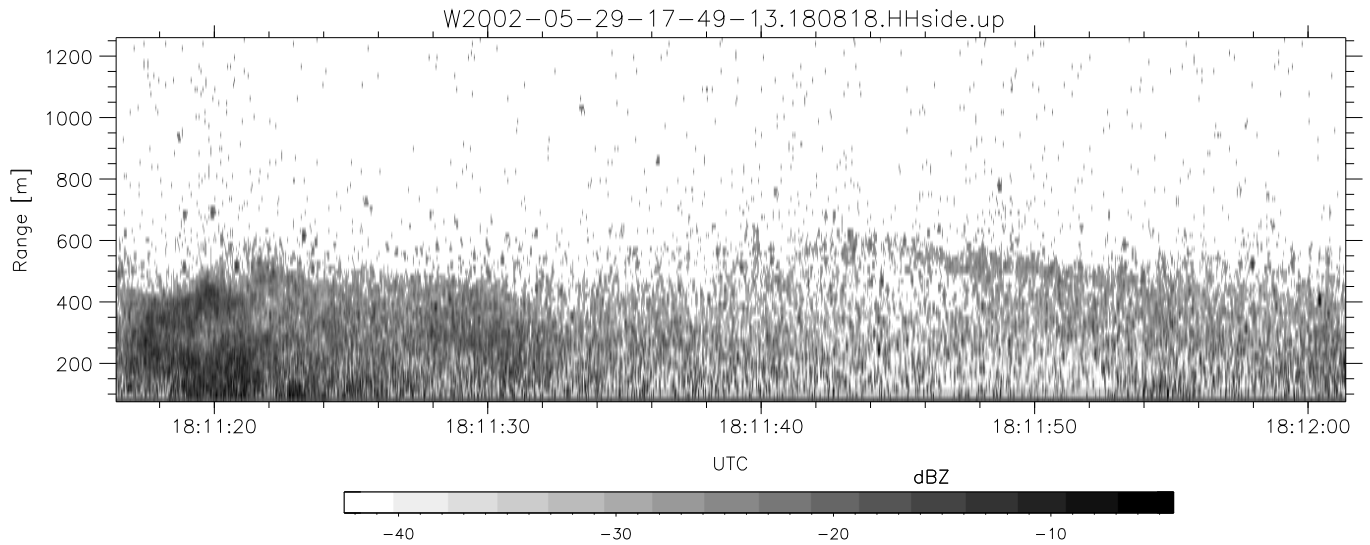
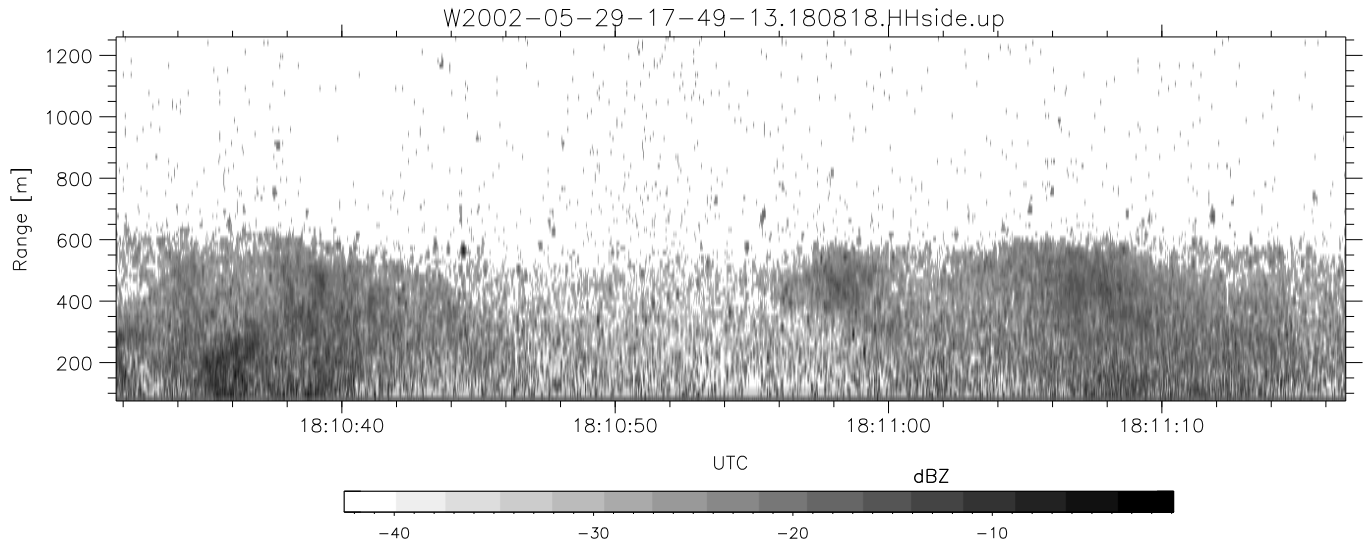


IHOP 2002 (dual-antenna config, modes 1,3,4,7) Data (cal: 49.0,50.0)

W2002-05-29-17-49-13 - PPMAG4
 IRIG:1,UTC: 17:48:55.12 to 19:39:20.99, Dur: 6625s
 TimeLngth: 6625.87s, TimeInt: 35ms (27.8pps)
 TimeCor=-13.0s, DSPDif(mn,mx,min):35,35,220
 PPS(min,max,std): 23,29,1.17
 Prof: 30081 to 214206, NumProf(t/r): 184125/10844
 ProcTime/Recs: 18:08:18-18:14:47/32532-43375
 MxACQtime: 43ms; DRate: 125.2KB/s; Flags: 0, 0, 0
 Pulse: 275ns, IFfilt: 5.0MHz; ppPol: HH HV VV
 TxPol: HHVV, PRF: 20 10 20 10 kHz
 Range: Delay 75m, Spacing 15m, Gates 80
 Ave. Pulses: 108, Rng/Prof Aspect@90m/s: 4.6

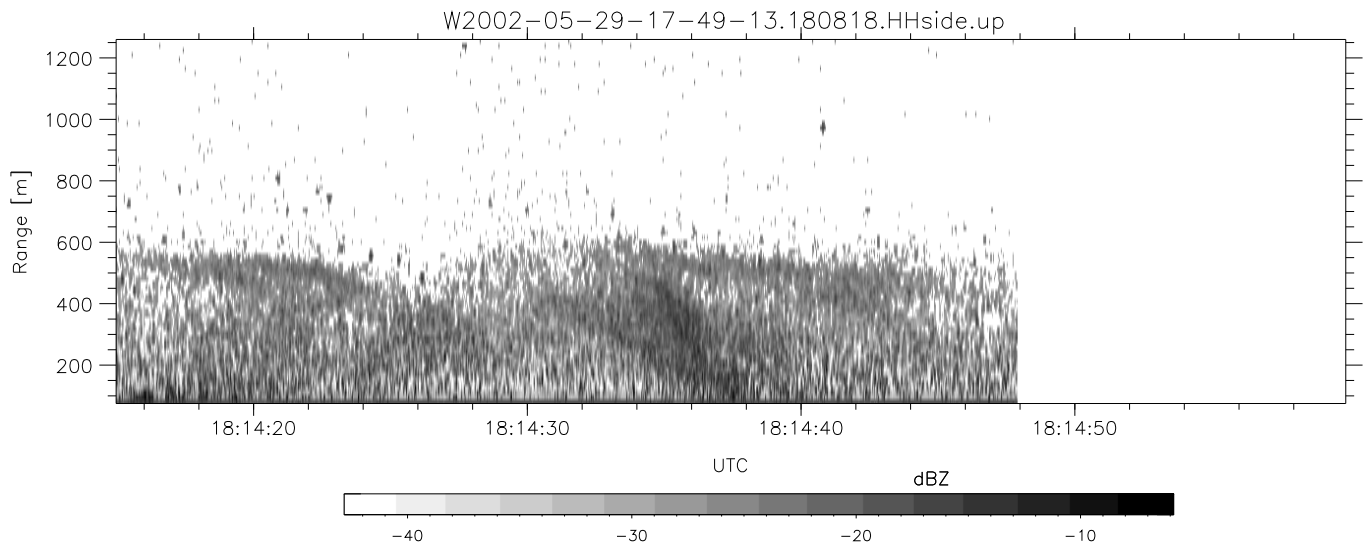
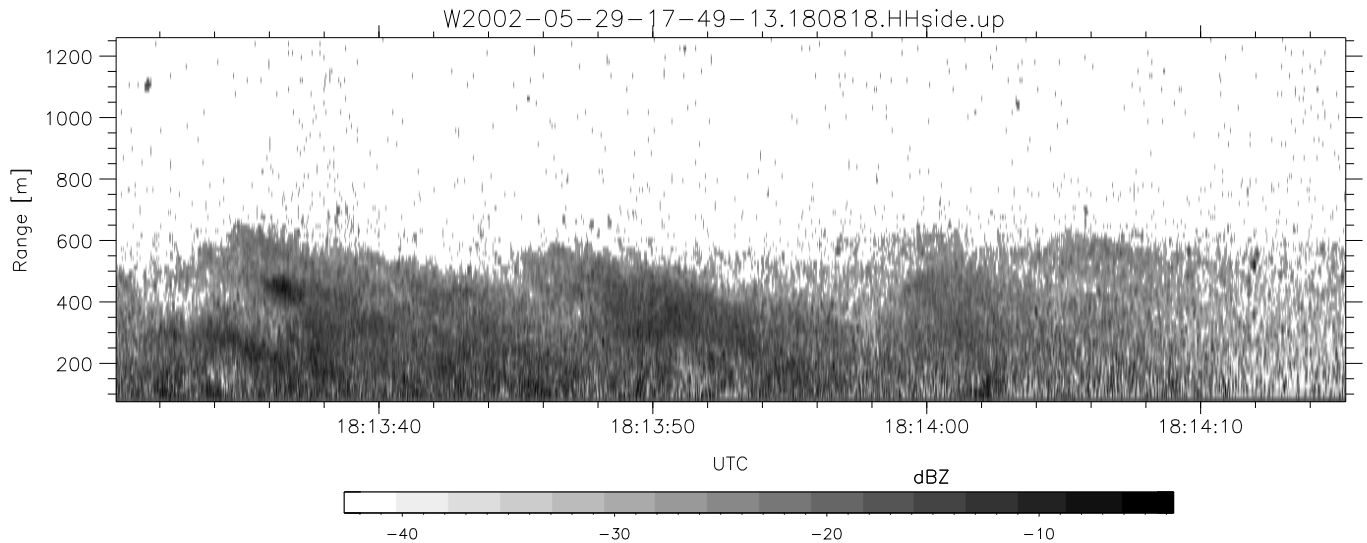
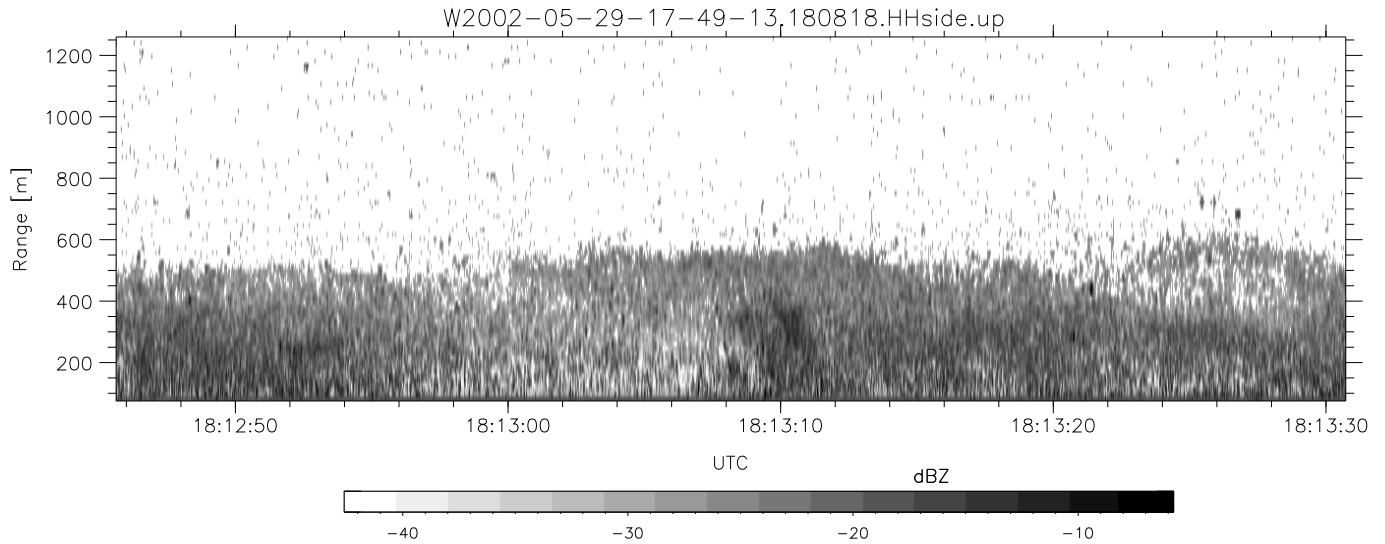
| | Min | Max | Mean | Std | Varc% |
|-----------|--------|--------|--------|--------|-------|
| hhN(dB) | -66.76 | -63.92 | -65.34 | -75.99 | 8.6 |
| vvN(dB) | -66.47 | -63.51 | -64.83 | -75.38 | 8.8 |
| hhL(dB) | -15.87 | -8.79 | -11.96 | -19.62 | 17.1 |
| vvL(dB) | -15.49 | -10.88 | -12.55 | -20.51 | 16.0 |
| ppN(m/s) | -12.67 | 12.70 | 0.07 | 4.18 | |
| ppT(m/s) | -100.0 | 100.34 | 0.56 | 32.98 | |
| hh/vv(dB) | -NaN | 63.31 | 12.77 | 40.47 | 5879 |
| vh/hh(dB) | -NaN | -27.30 | -33.20 | -34.91 | 67.4 |
| hv/vv(dB) | -NaN | -23.80 | -47.05 | -44.37 | 185. |
| hnjmp(dB) | -1.84 | 1.86 | 0.15 | -9.03 | 12.1 |
| vnjmp(dB) | -2.24 | 1.97 | 0.15 | -8.97 | 12.2 |



IHOP 2002 (dual-antenna config, modes 1,3,4,7) Data (cal: 49.0,50.0)

W2002-05-29-17-49-13 - PPMAG4
 IRIG:1,UTC: 17:48:55.12 to 19:39:20.99, Dur: 6625s
 TimeLngth: 6625.87s, TimeInt: 35ms (27.8pps)
 TimeCor=-13.0s, DSPDif(mn,mx,min):35,35,220
 PPS(min,max,std): 23,29,1.17
 Prof: 30081 to 214206, NumProf(t/r): 184125/10844
 ProcTime/Recs: 18:08:18-18:14:47/32532-43375
 MxACQtime: 43ms; DRate: 125.2KB/s; Flags: 0, 0, 0
 Pulse: 275ns, IFfilt: 5.0MHz; ppPol: HH HV VV
 TxPol: HHVV, PRF: 20 10 20 10 kHz
 Range: Delay 75m, Spacing 15m, Gates 80
 Ave. Pulses: 108, Rng/Prof Aspect@90m/s: 4.6

| | Min | Max | Mean | Std | Varc% |
|-----------|--------|--------|--------|--------|-------|
| hhN(dB) | -66.76 | -63.92 | -65.34 | -75.99 | 8.6 |
| vvN(dB) | -66.47 | -63.51 | -64.83 | -75.38 | 8.8 |
| hhL(dB) | -15.87 | -8.79 | -11.96 | -19.62 | 17.1 |
| vvL(dB) | -15.49 | -10.88 | -12.55 | -20.51 | 16.0 |
| ppN(m/s) | -12.67 | 12.70 | 0.07 | 4.18 | |
| ppT(m/s) | -100.0 | 100.34 | 0.56 | 32.98 | |
| hh/vv(dB) | -NaN | 63.31 | 12.77 | 40.47 | 5879 |
| vh/hh(dB) | -NaN | -27.30 | -33.20 | -34.91 | 67.4 |
| hv/vv(dB) | -NaN | -23.80 | -47.05 | -44.37 | 185. |
| hnjmp(dB) | -1.84 | 1.86 | 0.15 | -9.03 | 12.1 |
| vnjmp(dB) | -2.24 | 1.97 | 0.15 | -8.97 | 12.2 |



IHOP 2002 (dual-antenna config, modes 1,3,4,7) Data (cal: 49.0,50.0)

| | Min | Max | Mean | Std | Varc% |
|--|------------|---------------|--------|--------|-------|
| W2002-05-29-17-49-13 - PPMAG4 | | | | | |
| IRIG:1,UTC: 17:48:55.12 to 19:39:20.99, Dur: 6625s | hhN (dB) | -66.76 -63.92 | -65.34 | -75.99 | 8.6 |
| TimeLngth: 6625.87s, TimeInt: 35ms (27.8pps) | vvN (dB) | -66.47 -63.51 | -64.83 | -75.38 | 8.8 |
| TimeCor=-13.0s, DSPDif(mn,mx,min):35,35,220 | hhL (dB) | -15.87 -8.79 | -11.96 | -19.62 | 17.1 |
| PPS(min,max,std): 23,29,1.17 | vvL (dB) | -15.49 -10.88 | -12.55 | -20.51 | 16.0 |
| Prof: 30081 to 214206, NumProf(t/r): 184125/10844 | ppN (m/s) | -12.67 12.70 | 0.07 | 4.18 | |
| ProcTime/Recs: 18:08:18-18:14:47/32532-43375 | ppT (m/s) | -100.0 100.34 | 0.56 | 32.98 | |
| MxAcQtime: 43ms; DRate: 125.2KB/s; Flags: 0, 0, 0 | hh/vv (dB) | -NaN 63.31 | 12.77 | 40.47 | 5879 |
| Pulse: 275ns, IFfilt: 5.0MHz; ppPol: HH HV VV | vh/hh (dB) | -NaN -27.30 | -33.20 | -34.91 | 67.4 |
| TxPol: HHVV, PRF: 20 10 20 10 kHz | hv/vv (dB) | -NaN -23.80 | -47.05 | -44.37 | 185. |
| Range: Delay 75m, Spacing 15m, Gates 80 | hnjmp (dB) | -1.84 1.86 | 0.15 | -9.03 | 12.1 |
| Ave. Pulses: 108, Rng/Prof Aspect@90m/s: 4.6 | vnjmp (dB) | -2.24 1.97 | 0.15 | -8.97 | 12.2 |