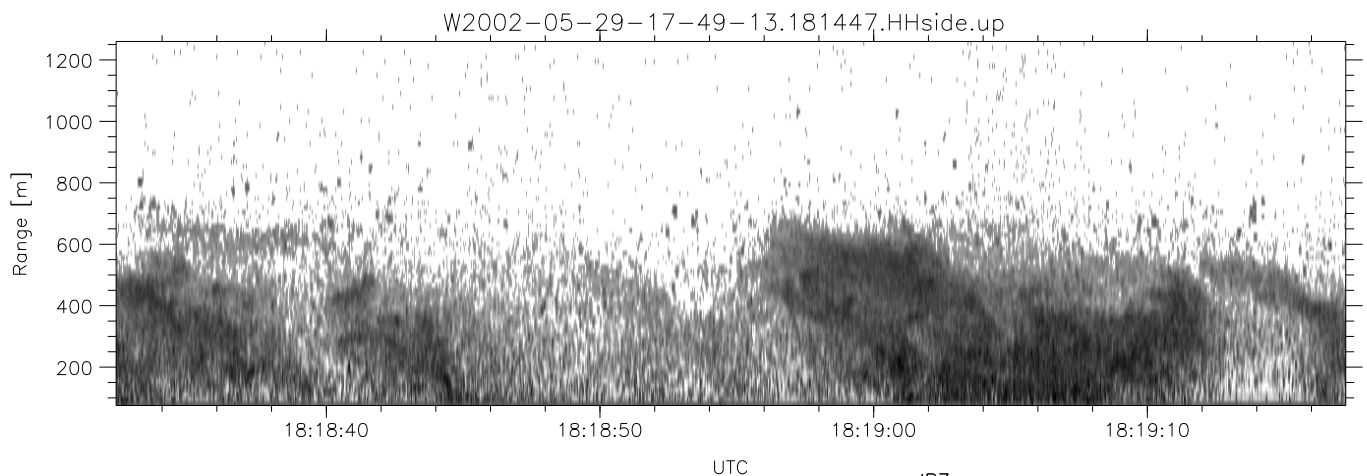
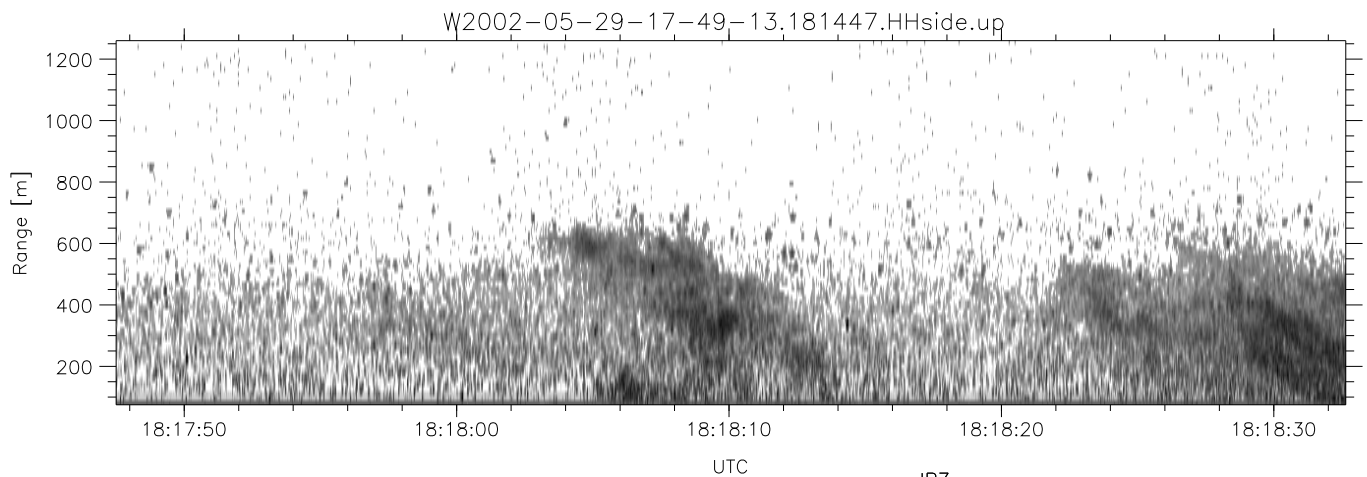
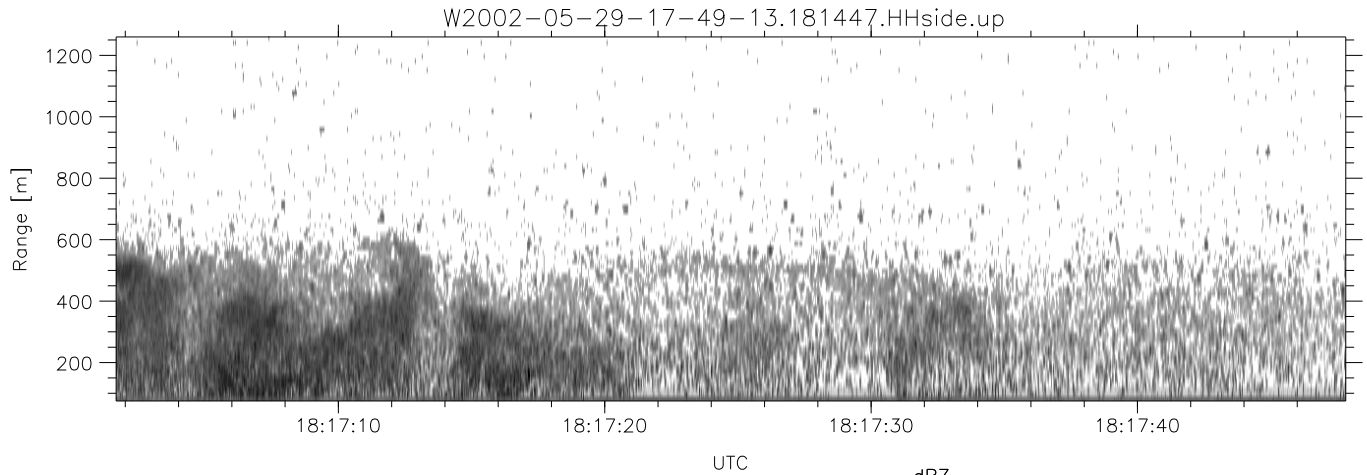


IHOP 2002 (dual-antenna config, modes 1,3,4,7) Data (cal: 49.0,50.0)

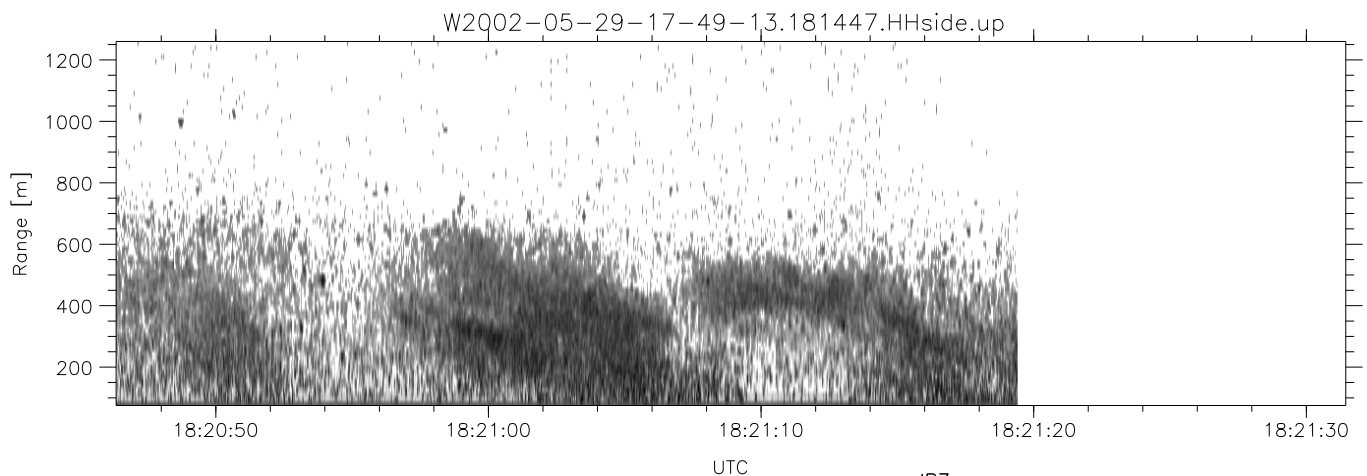
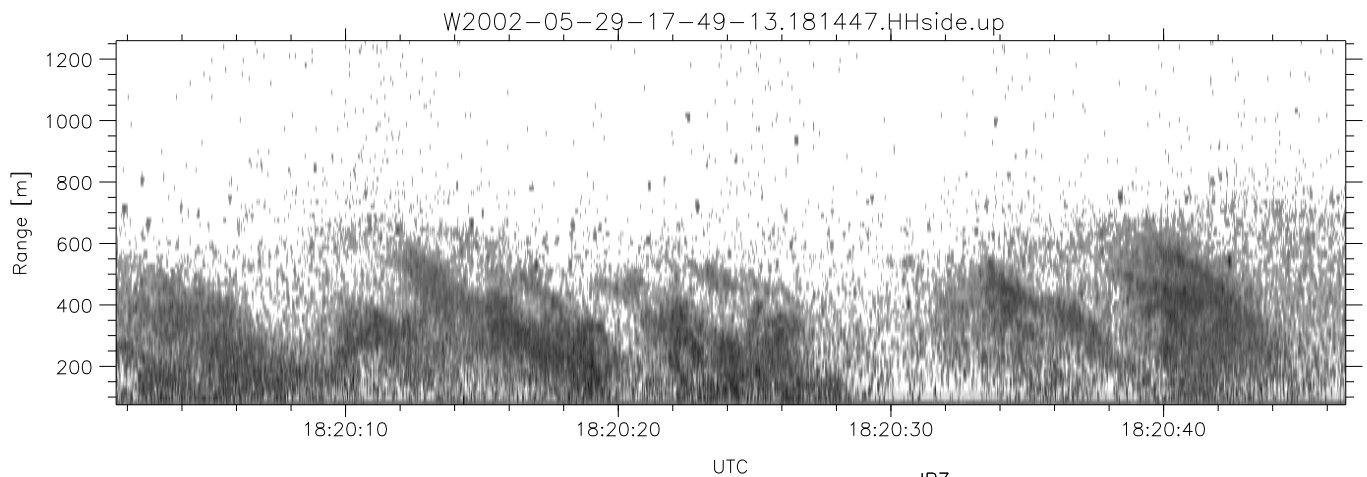
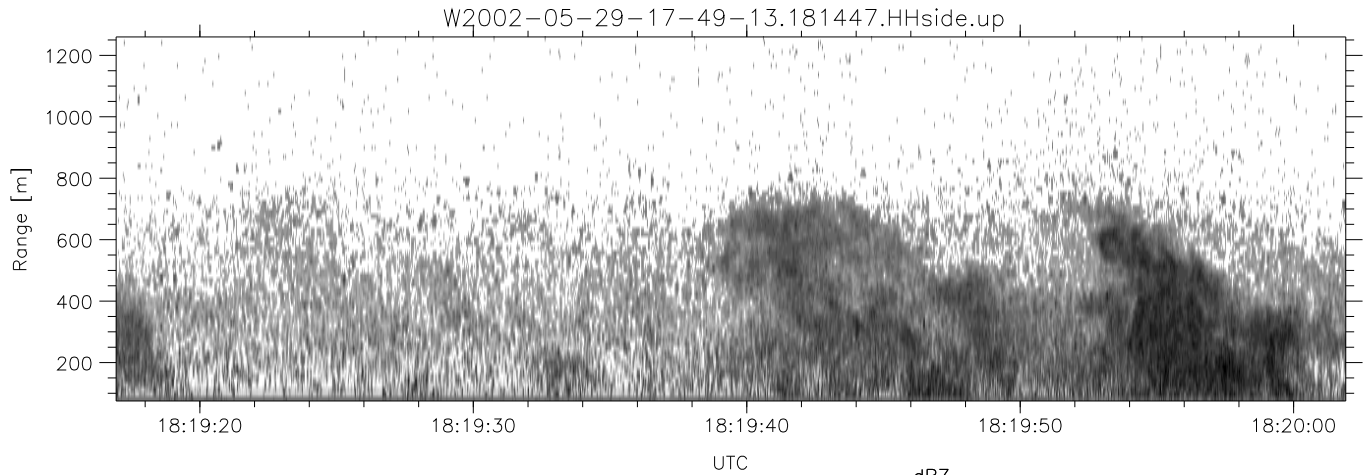
W2002-05-29-17-49-13 - PPMAG4	Min	Max	Mean	Std	Varc%
IRIG:1,UTC: 17:48:55.12 to 19:39:20.99, Dur: 6625s	-66.99	-64.03	-65.39	-76.03	8.6
TimeLngth: 6625.87s, TimeInt: 35ms (27.8pps)	-66.26	-63.38	-64.80	-75.32	8.9
TimeCor=-13.0s, DSPDif(mn,mx,min):36,35,506	-17.86	-9.64	-12.63	-18.21	27.7
PPS(min,max,std): 15,29,1.54	-21.10	-11.26	-15.46	-20.86	28.9
Prof: 30081 to 214206, NumProf(t/r): 184125/10844	ppN(m/s)	-12.50	12.68	-0.05	4.16
ProcTime/Recs: 18:14:47-18:21:19/43376-54219	ppT(m/s)	-98.75	100.20	-0.42	32.86
MxACQtime: 43ms; DRate: 125.2KB/s; Flags: 0, 0, 0	hh/vv(dB)	-NaN	55.01	-NaN	42.96 -686
Pulse: 275ns, IFilt: 5.0MHz; ppPol: HH HV VV	vh/hh(dB)	-NaN	-28.31	-34.05	-35.38 73.5
TxPol: HHVV, PRF: 20 10 20 10 kHz	hv/vv(dB)	-NaN	-34.55	-47.44	-45.40 160.
Range: Delay 75m, Spacing 15m, Gates 80	hn/jmp(dB)	-1.66	2.19	0.15	-9.08 11.9
Ave. Pulses: 108, Rng/Prof Aspect@90m/s: 4.6	vn/jmp(dB)	-2.14	2.05	0.15	-8.91 12.4



IHOP 2002 (dual-antenna config, modes 1,3,4,7) Data (cal: 49.0,50.0)

W2002-05-29-17-49-13 - PPMAG4
 IRIG:1,UTC: 17:48:55.12 to 19:39:20.99, Dur: 6625s
 TimeLngth: 6625.87s, TimeInt: 35ms (27.8pps)
 TimeCor=-13.0s, DSPDif(mn,mx,min):36,35,506
 PPS(min,max,std): 15,29,1.54
 Prof: 30081 to 214206, NumProf(t/r): 184125/10844
 ProcTime/Recs: 18:14:47-18:21:19/43376-54219
 MxACQtime: 43ms; DRate: 125.2KB/s; Flags: 0, 0, 0
 Pulse: 275ns, IFfilt: 5.0MHz; ppPol: HH HV VV
 TxPol: HHVV, PRF: 20 10 20 10 kHz
 Range: Delay 75m, Spacing 15m, Gates 80
 Ave. Pulses: 108, Rng/Prof Aspect@90m/s: 4.6

	Min	Max	Mean	Std	Varc%
hhN (dB)	-66.99	-64.03	-65.39	-76.03	8.6
vvN (dB)	-66.26	-63.38	-64.80	-75.32	8.9
hhL (dB)	-17.86	-9.64	-12.63	-18.21	27.7
vvL (dB)	-21.10	-11.26	-15.46	-20.86	28.9
ppN (m/s)	-12.50	12.68	-0.05	4.16	
ppT (m/s)	-98.75	100.20	-0.42	32.86	
hh/vv (dB)	-NaN	55.01	-NaN	42.96	-686
vh/hh (dB)	-NaN	-28.31	-34.05	-35.38	73.5
hv/vv (dB)	-NaN	-34.55	-47.44	-45.40	160.
hn_jmp (dB)	-1.66	2.19	0.15	-9.08	11.9
vn_jmp (dB)	-2.14	2.05	0.15	-8.91	12.4



IHOP 2002 (dual-antenna config, modes 1,3,4,7) Data (cal: 49.0,50.0)

W2002-05-29-17-49-13 - PPMAG4	Min	Max	Mean	Std	Varc%
IRIG:1,UTC: 17:48:55.12 to 19:39:20.99, Dur: 6625s	-66.99	-64.03	-65.39	-76.03	8.6
TimeLngth: 6625.87s, TimeInt: 35ms (27.8pps)	-66.26	-63.38	-64.80	-75.32	8.9
TimeCor=-13.0s, DSPDif(mn,mx,min):36,35,506	-17.86	-9.64	-12.63	-18.21	27.7
PPS(min,max,std): 15,29,1.54	-21.10	-11.26	-15.46	-20.86	28.9
Prof: 30081 to 214206, NumProf(t/r): 184125/10844	ppN(m/s)	-12.50	12.68	-0.05	4.16
ProcTime/Recs: 18:14:47-18:21:19/43376-54219	ppT(m/s)	-98.75	100.20	-0.42	32.86
MxACQtime: 43ms; DRate: 125.2KB/s; Flags: 0, 0, 0	hh/vv(dB)	-NaN	55.01	-NaN	42.96 -686
Pulse: 275ns, IFfilt: 5.0MHz; ppPol: HH HV VV	vh/hh(dB)	-NaN	-28.31	-34.05	-35.38 73.5
TxPol: HHVV, PRF: 20 10 20 10 kHz	hv/vv(dB)	-NaN	-34.55	-47.44	-45.40 160.
Range: Delay 75m, Spacing 15m, Gates 80	hn/jmp(dB)	-1.66	2.19	0.15	-9.08 11.9
Ave. Pulses: 108, Rng/Prof Aspect@90m/s: 4.6	vn/jmp(dB)	-2.14	2.05	0.15	-8.91 12.4