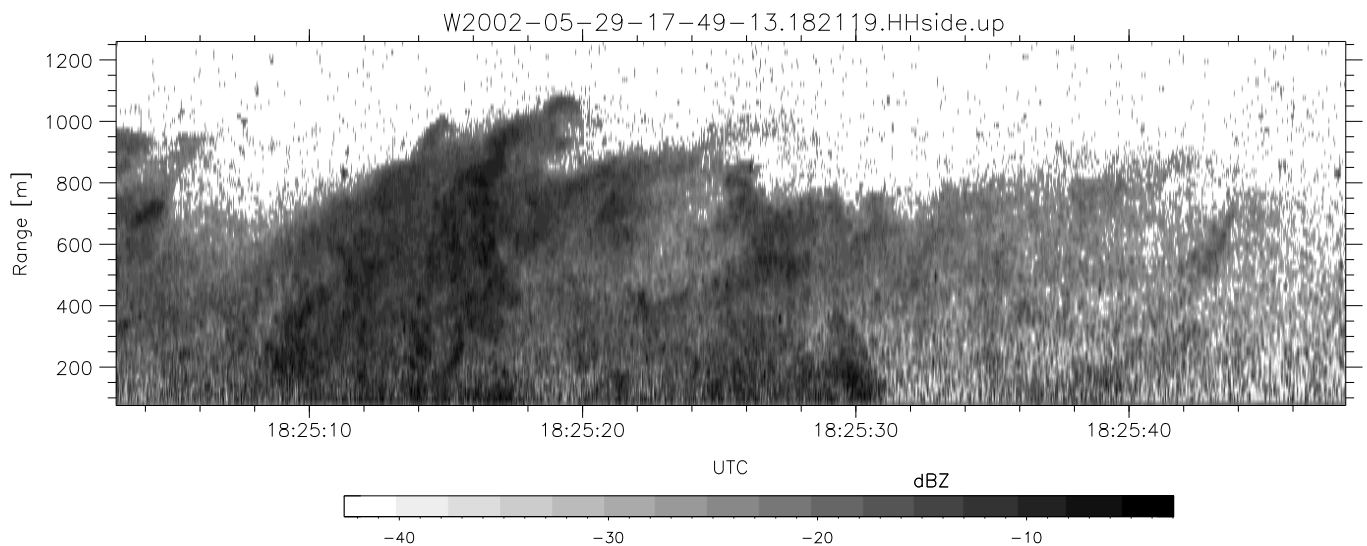
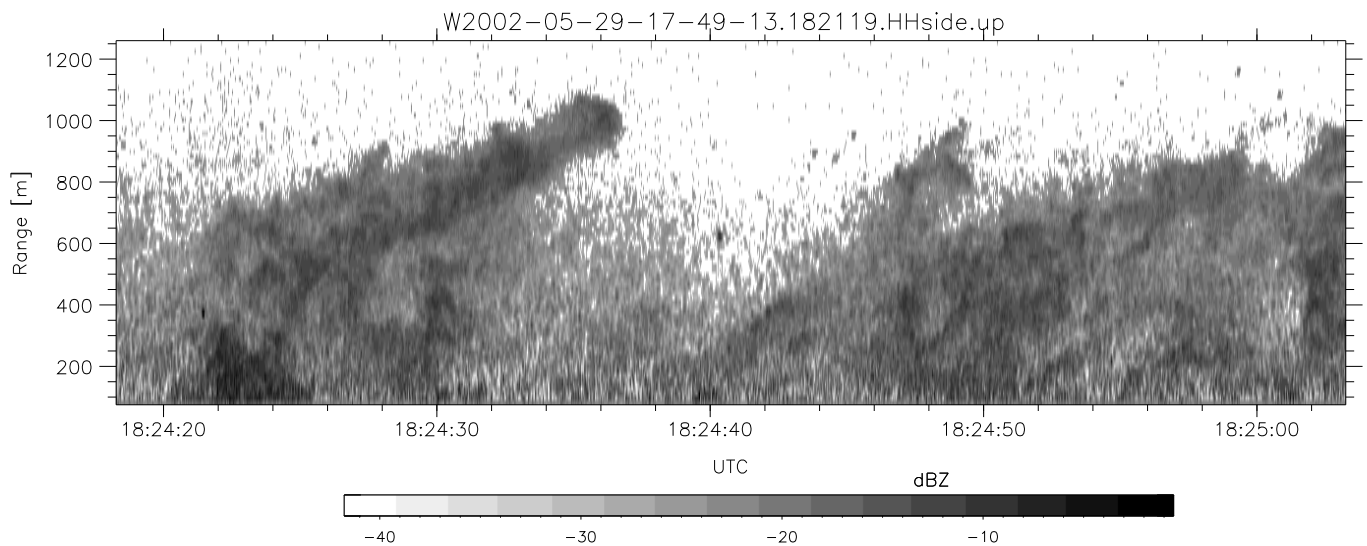
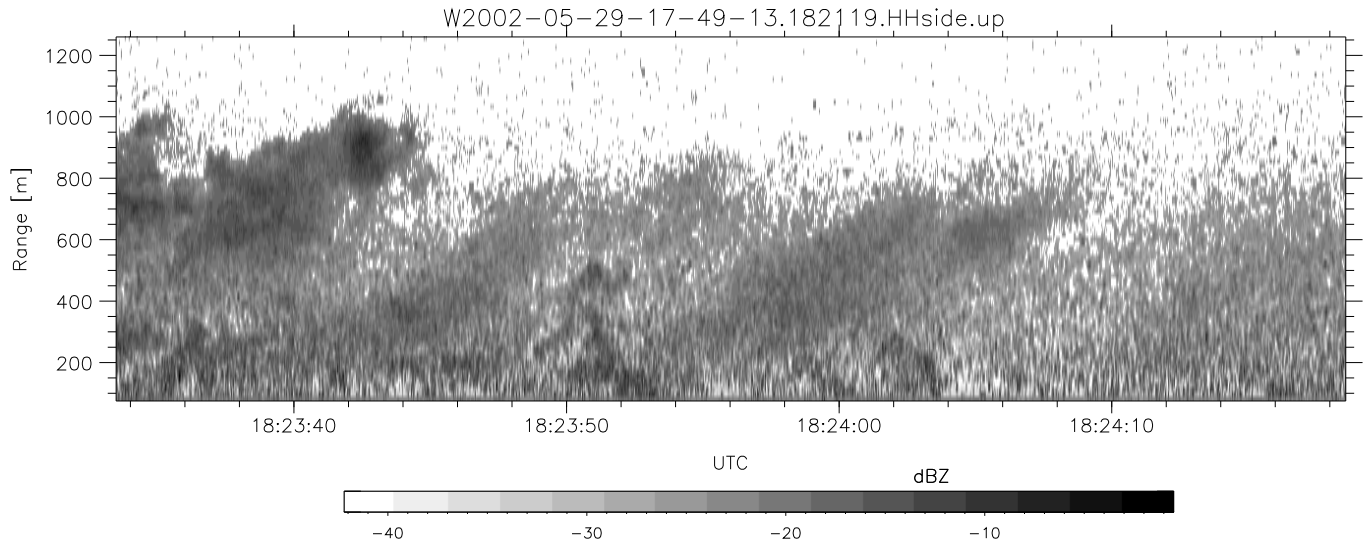


IHOP 2002 (dual-antenna config, modes 1,3,4,7) Data (cal: 49.0,50.0)

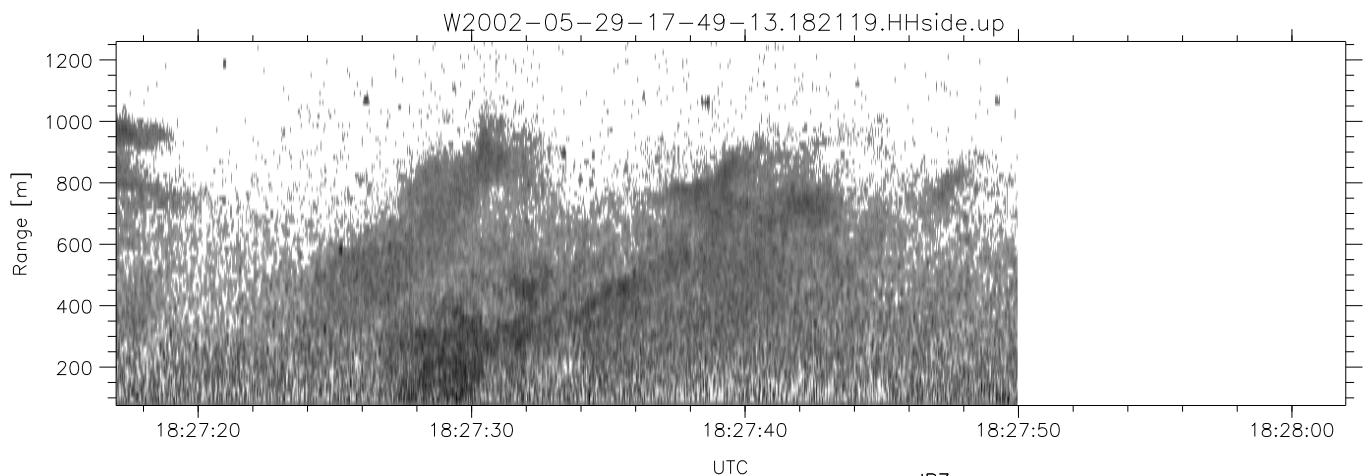
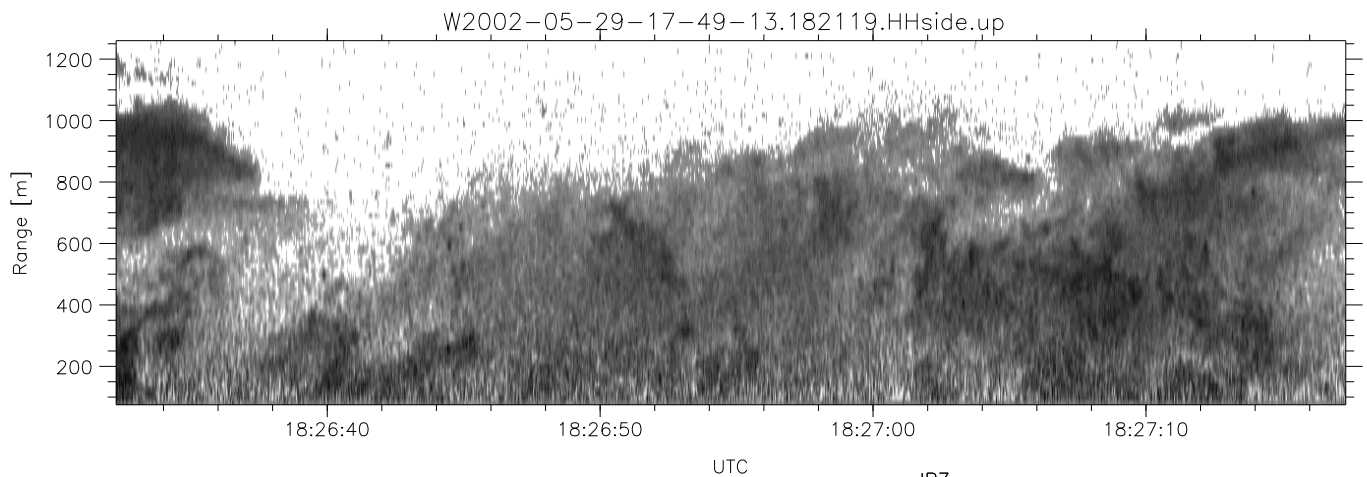
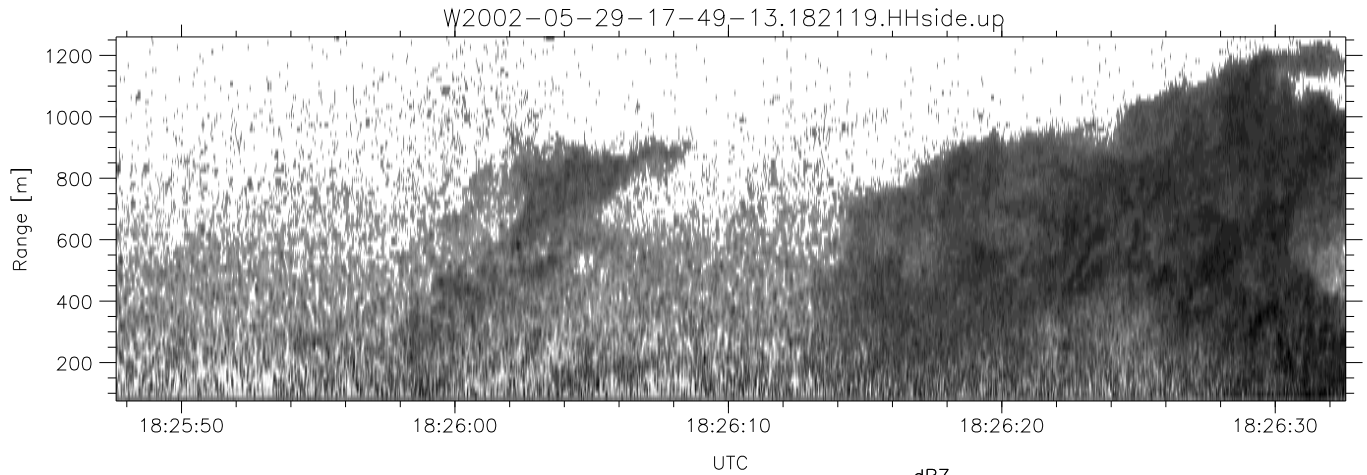
W2002-05-29-17-49-13 - PPMAG4  
 IRIG:1,UTC: 17:48:55.12 to 19:39:20.99, Dur: 6625s  
 TimeLngth: 6625.87s, TimeInt: 35ms (27.8pps)  
 TimeCor=-13.0s, DSPDif(mn,mx,min):35,35,220  
 PPS(min,max,std): 22,29,1.20  
 Prof: 30081 to 214206, NumProf(t/r): 184125/10844  
 ProcTime/Recs: 18:21:19-18:27:49/54220-65063  
 MxACQtime: 43ms; DRate: 125.2KB/s; Flags: 0, 0, 0  
 Pulse: 275ns, IFfilt: 5.0MHz; ppPol: HH HV VV  
 TxPol: HHVV, PRF: 20 10 20 10 kHz  
 Range: Delay 75m, Spacing 15m, Gates 80  
 Ave. Pulses: 108, Rng/Prof Aspect@90m/s: 4.6

	Min	Max	Mean	Std	Varc%
hhN (dB)	-67.00	-64.12	-65.42	-76.06	8.6
vvN (dB)	-66.61	-63.69	-64.94	-75.47	8.9
hhL (dB)	-19.58	-9.31	-15.39	-19.71	37.0
vvL (dB)	-20.86	-13.25	-15.41	-21.84	22.7
ppN (m/s)	-12.08	11.82	-0.01	4.11	
ppT (m/s)	-95.45	93.34	-0.09	32.43	
hh/vv (dB)	-NaN	63.22	20.88	41.01	1030
vh/hh (dB)	-NaN	-3.49	-17.21	-12.98	265.
hv/vv (dB)	-NaN	-8.83	-32.32	-25.49	481.
hh_jmp (dB)	-1.78	1.78	0.15	-9.00	12.2
vv_jmp (dB)	-1.89	1.90	0.14	-8.97	12.3



IHOP 2002 (dual-antenna config, modes 1,3,4,7) Data (cal: 49.0,50.0)

W2002-05-29-17-49-13 - PPMAG4	Min	Max	Mean	Std	Varc%	
IRIG:1,UTC: 17:48:55.12 to 19:39:20.99, Dur: 6625s	hhN (dB)	-67.00	-64.12	-65.42	-76.06	8.6
TimeLngth: 6625.87s, TimeInt: 35ms (27.8pps)	vvN (dB)	-66.61	-63.69	-64.94	-75.47	8.9
TimeCor=-13.0s, DSPDif(mn,mx,min):35,35,220	hhL (dB)	-19.58	-9.31	-15.39	-19.71	37.0
PPS(min,max,std): 22,29,1.20	vvL (dB)	-20.86	-13.25	-15.41	-21.84	22.7
Prof: 30081 to 214206, NumProf(t/r): 184125/10844	ppN (m/s)	-12.08	11.82	-0.01	4.11	
ProcTime/Recs: 18:21:19-18:27:49/54220-65063	ppT (m/s)	-95.45	93.34	-0.09	32.43	
MxACQtime: 43ms; DRate: 125.2KB/s; Flags: 0, 0, 0	hh/vv (dB)	-NaN	63.22	20.88	41.01	1030
Pulse: 275ns, IFfilt: 5.0MHz; ppPol: HH HV VV	vh/hh (dB)	-NaN	-3.49	-17.21	-12.98	265.
TxPol: HHVV, PRF: 20 10 20 10 kHz	hv/vv (dB)	-NaN	-8.83	-32.32	-25.49	481.
Range: Delay 75m, Spacing 15m, Gates 80	hn/jmp (dB)	-1.78	1.78	0.15	-9.00	12.2
Ave. Pulses: 108, Rng/Prof Aspect@90m/s: 4.6	vn/jmp (dB)	-1.89	1.90	0.14	-8.97	12.3



IHOP 2002 (dual-antenna config, modes 1,3,4,7) Data (cal: 49.0,50.0)

W2002-05-29-17-49-13 - PPMAG4  
 IRIG:1,UTC: 17:48:55.12 to 19:39:20.99, Dur: 6625s  
 TimeLngth: 6625.87s, TimeInt: 35ms (27.8pps)  
 TimeCor=-13.0s, DSPDif(mn,mx,min):35,35,220  
 PPS(min,max,std): 22,29,1.20  
 Prof: 30081 to 214206, NumProf(t/r): 184125/10844  
 ProcTime/Recs: 18:21:19-18:27:49/54220-65063  
 MxACQtime: 43ms; DRate: 125.2KB/s; Flags: 0, 0, 0  
 Pulse: 275ns, IFfilt: 5.0MHz; ppPol: HH HV VV  
 TxPol: HHVV, PRF: 20 10 20 10 kHz  
 Range: Delay 75m, Spacing 15m, Gates 80  
 Ave. Pulses: 108, Rng/Prof Aspect@90m/s: 4.6

	Min	Max	Mean	Std	Varc%
hhN (dB)	-67.00	-64.12	-65.42	-76.06	8.6
vvN (dB)	-66.61	-63.69	-64.94	-75.47	8.9
hhL (dB)	-19.58	-9.31	-15.39	-19.71	37.0
vvL (dB)	-20.86	-13.25	-15.41	-21.84	22.7
ppN (m/s)	-12.08	11.82	-0.01	4.11	
ppT (m/s)	-95.45	93.34	-0.09	32.43	
hh/vv (dB)	-NaN	63.22	20.88	41.01	1030
vh/hh (dB)	-NaN	-3.49	-17.21	-12.98	265.
hv/vv (dB)	-NaN	-8.83	-32.32	-25.49	481.
hnjmp (dB)	-1.78	1.78	0.15	-9.00	12.2
vnjmp (dB)	-1.89	1.90	0.14	-8.97	12.3