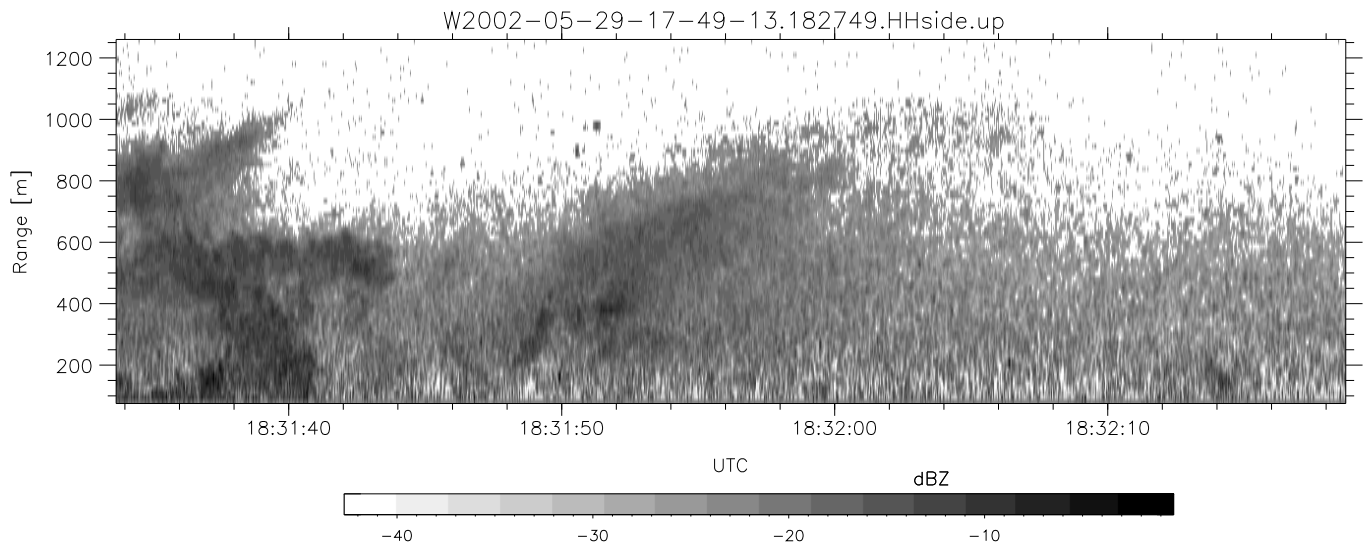
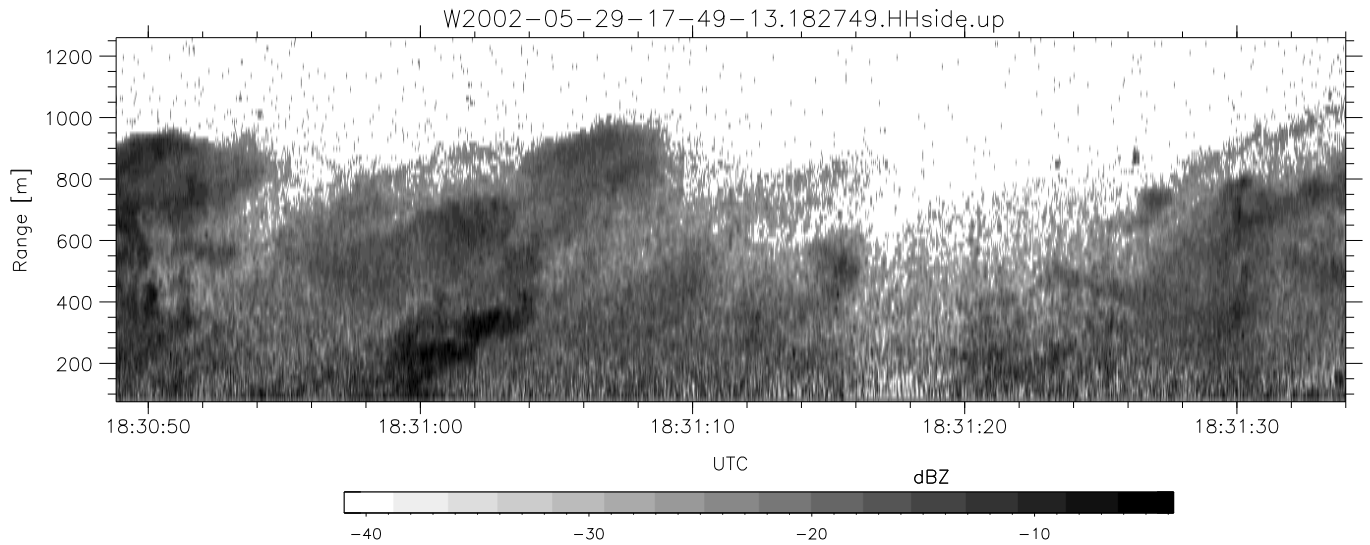
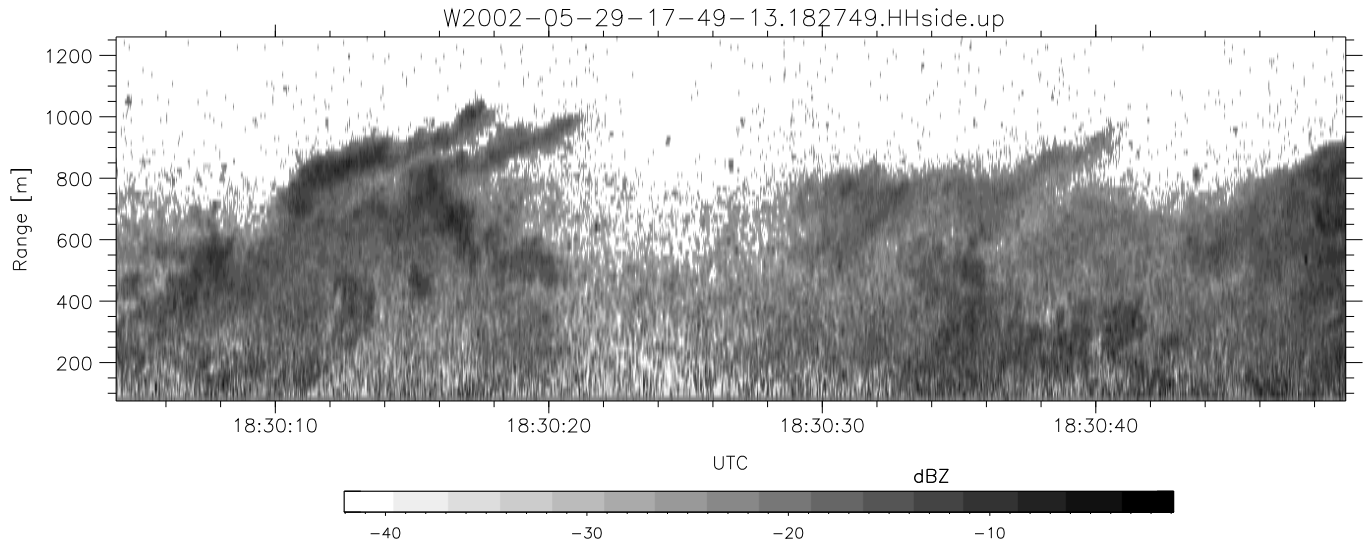


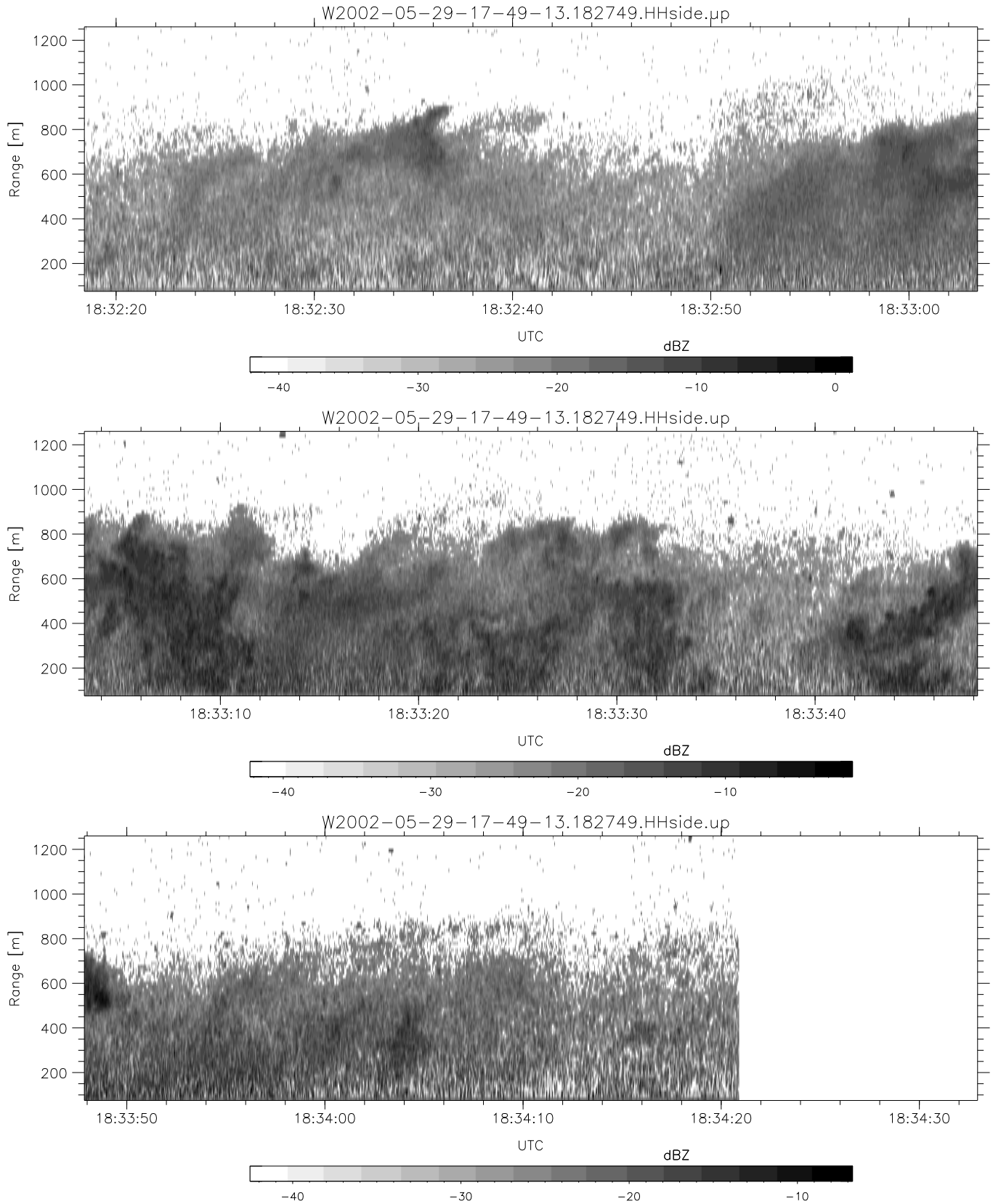
IHOP 2002 (dual-antenna config, modes 1,3,4,7) Data (cal: 49.0,50.0)

W2002-05-29-17-49-13 - PPMAG4	Min	Max	Mean	Std	Varc%	
IRIG:1,UTC: 17:48:55.12 to 19:39:20.99, Dur: 6625s	hhN (dB)	-67.12	-64.24	-65.49	-76.13	8.6
TimeLngth: 6625.87s, TimeInt: 35ms (27.8pps)	vvN (dB)	-66.60	-63.40	-65.07	-75.45	9.2
TimeCor=-13.0s, DSPDif(mn,mx,min):36,35,184	hhL (dB)	-19.73	-10.23	-16.22	-22.10	25.8
PPS(min,max,std): 23,29,1.17	vvL (dB)	-21.98	-12.96	-15.28	-22.37	19.5
Prof: 30081 to 214206, NumProf(t/r): 184125/10844	ppN (m/s)	-11.92	11.94	-0.03	4.16	
ProcTime/Recs: 18:27:49-18:34:20/65064-75907	ppT (m/s)	-94.15	94.32	-0.25	32.88	
MxAcQtime: 43ms; DRate: 125.2KB/s; Flags: 0, 0, 0	hh/vv (dB)	-NaN	68.14	20.09	43.12	2008
Pulse: 275ns, IFilt: 5.0MHz; ppPol: HH HV VV	vh/hh (dB)	-NaN	-13.77	-28.80	-26.12	185.
TxPol: HHVV, PRF: 20 10 20 10 kHz	hv/vv (dB)	-NaN	-7.51	-27.41	-23.18	264.
Range: Delay 75m, Spacing 15m, Gates 80	hn/jmp (dB)	-1.81	2.13	0.15	-9.00	12.2
Ave. Pulses: 108, Rng/Prof Aspect@90m/s: 4.6	vn/jmp (dB)	-1.70	2.14	0.14	-8.86	12.6



IHOP 2002 (dual-antenna config, modes 1,3,4,7) Data (cal: 49.0,50.0)

W2002-05-29-17-49-13 - PPMAG4	Min	Max	Mean	Std	Varc%	
IRIG:1,UTC: 17:48:55.12 to 19:39:20.99, Dur: 6625s	hhN (dB)	-67.12	-64.24	-65.49	-76.13	8.6
TimeLngth: 6625.87s, TimeInt: 35ms (27.8pps)	vvN (dB)	-66.60	-63.40	-65.07	-75.45	9.2
TimeCor=-13.0s, DSPDif(mn,mx,min):36,35,184	hhL (dB)	-19.73	-10.23	-16.22	-22.10	25.8
PPS(min,max,std): 23,29,1.17	vvL (dB)	-21.98	-12.96	-15.28	-22.37	19.5
Prof: 30081 to 214206, NumProf(t/r): 184125/10844	ppN (m/s)	-11.92	11.94	-0.03	4.16	
ProcTime/Recs: 18:27:49-18:34:20/65064-75907	ppT (m/s)	-94.15	94.32	-0.25	32.88	
MxACQtime: 43ms; DRate: 125.2KB/s; Flags: 0, 0, 0	hh/vv (dB)	-NaN	68.14	20.09	43.12	2008
Pulse: 275ns, IFfilt: 5.0MHz; ppPol: HH HV VV	vh/hh (dB)	-NaN	-13.77	-28.80	-26.12	185.
TxPol: HHVV, PRF: 20 10 20 10 kHz	hv/vv (dB)	-NaN	-7.51	-27.41	-23.18	264.
Range: Delay 75m, Spacing 15m, Gates 80	hn_jmp (dB)	-1.81	2.13	0.15	-9.00	12.2
Ave. Pulses: 108, Rng/Prof Aspect@90m/s: 4.6	vn_jmp (dB)	-1.70	2.14	0.14	-8.86	12.6



IHOP 2002 (dual-antenna config, modes 1,3,4,7) Data (cal: 49.0,50.0)

W2002-05-29-17-49-13 - PPMAG4
 IRIG:1,UTC: 17:48:55.12 to 19:39:20.99, Dur: 6625s
 TimeLngth: 6625.87s, TimeInt: 35ms (27.8pps)
 TimeCor=-13.0s, DSPDif(mn,mx,min):36,35,184
 PPS(min,max,std): 23,29,1.17
 Prof: 30081 to 214206, NumProf(t/r): 184125/10844
 ProcTime/Recs: 18:27:49-18:34:20/65064-75907
 MxACQtime: 43ms; DRate: 125.2KB/s; Flags: 0, 0, 0
 Pulse: 275ns, IFfilt: 5.0MHz; ppPol: HH HV VV
 TxPol: HHVV, PRF: 20 10 20 10 kHz
 Range: Delay 75m, Spacing 15m, Gates 80
 Ave. Pulses: 108, Rng/Prof Aspect@90m/s: 4.6

	Min	Max	Mean	Std	Varc%
hhN(dB)	-67.12	-64.24	-65.49	-76.13	8.6
vvN(dB)	-66.60	-63.40	-65.07	-75.45	9.2
hhL(dB)	-19.73	-10.23	-16.22	-22.10	25.8
vvL(dB)	-21.98	-12.96	-15.28	-22.37	19.5
ppN(m/s)	-11.92	11.94	-0.03	4.16	
ppT(m/s)	-94.15	94.32	-0.25	32.88	
hh/vv(dB)	-NaN	68.14	20.09	43.12	2008
vh/hh(dB)	-NaN	-13.77	-28.80	-26.12	185.
hv/vv(dB)	-NaN	-7.51	-27.41	-23.18	264.
hnjmp(dB)	-1.81	2.13	0.15	-9.00	12.2
vnjmp(dB)	-1.70	2.14	0.14	-8.86	12.6