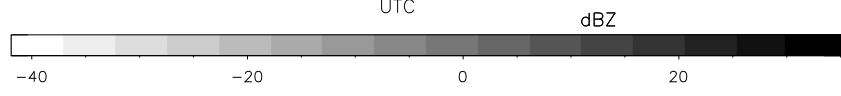
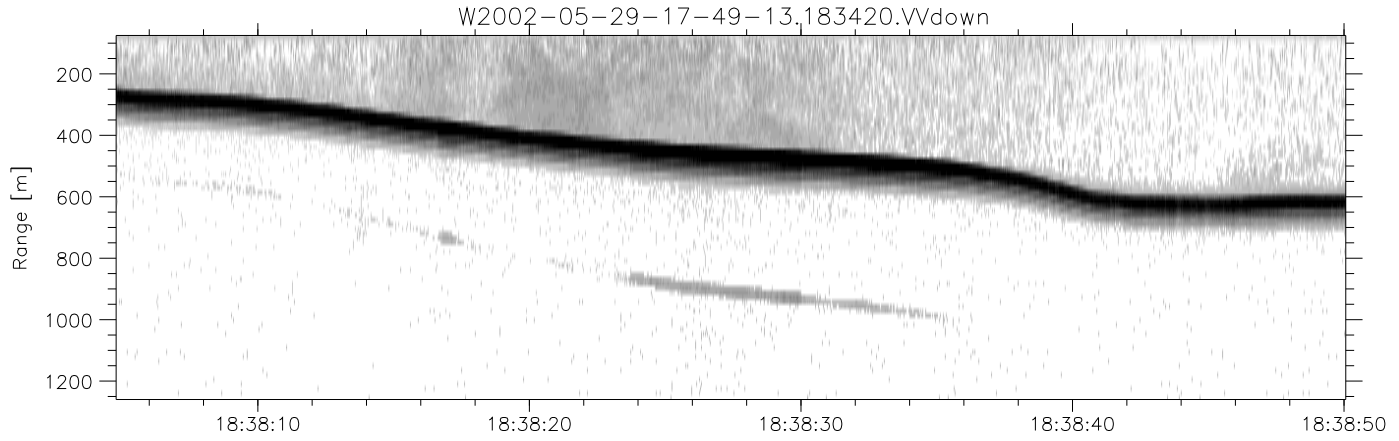
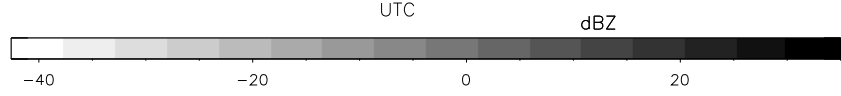
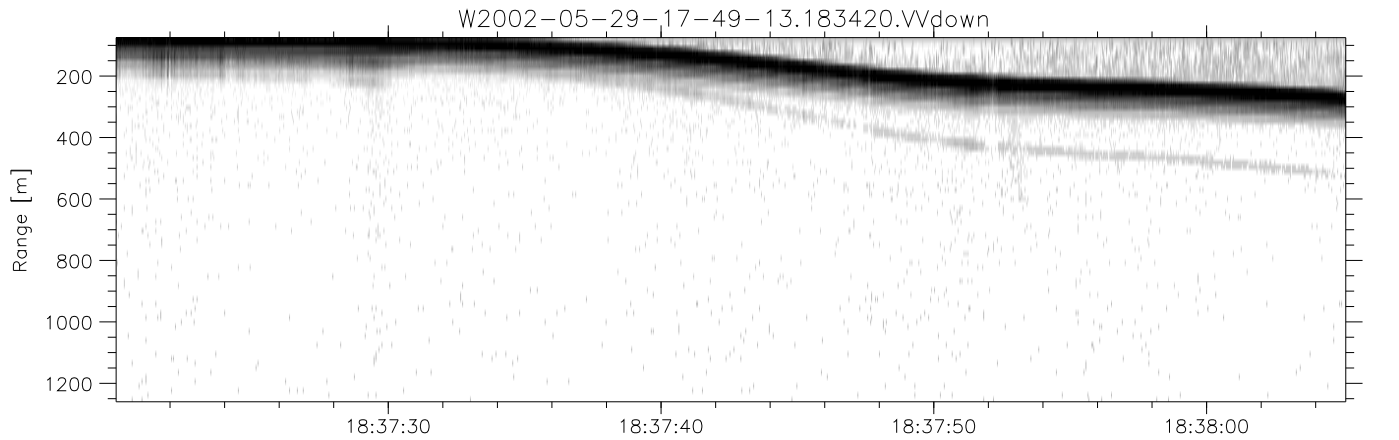
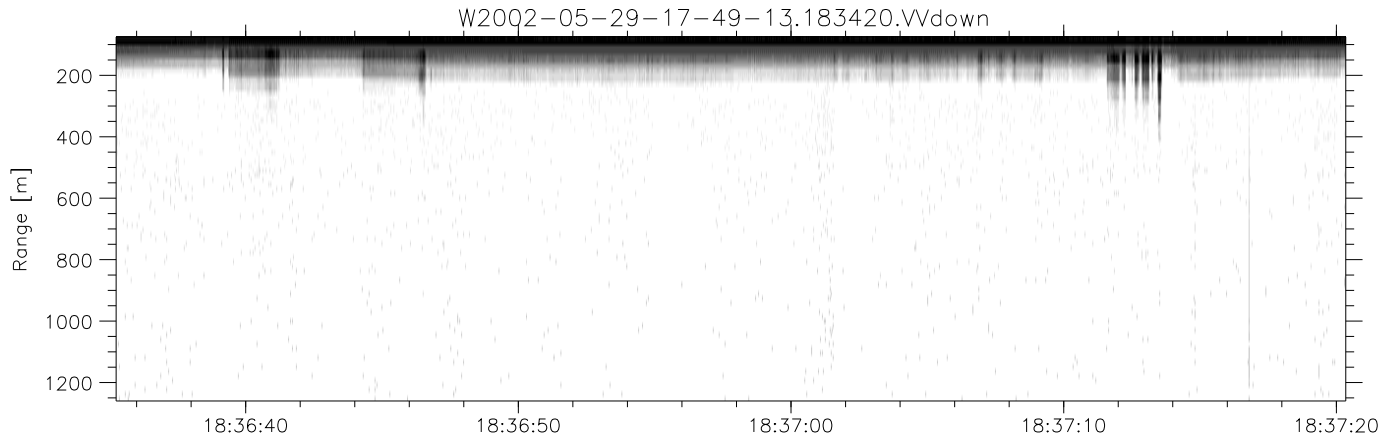


IHOP 2002 (dual-antenna config, modes 1,3,4,7) Data (cal: 49.0,50.0)

W2002-05-29-17-49-13 - PPMAG4  
 IRIG:1,UTC: 17:48:55.12 to 19:39:20.99, Dur: 6625s  
 TimeLngth: 6625.87s, TimeInt: 35ms (27.8pps)  
 TimeCor=-13.0s, DSPDif(mn,mx,min):36,35,217  
 PPS(min,max,std): 22,29,1.22  
 Prof: 30081 to 214206, NumProf(t/r): 184125/10844  
 ProcTime/Recs: 18:34:20-18:40:52/75908-86751  
 MxACQtime: 43ms; DRate: 125.2KB/s; Flags: 0, 0, 0  
 Pulse: 275ns, IFfilt: 5.0MHz; ppPol: HH HV VV  
 TxPol: HHVV, PRF: 20 10 20 10 kHz  
 Range: Delay 75m, Spacing 15m, Gates 80  
 Ave. Pulses: 108, Rng/Prof Aspect@90m/s: 4.6

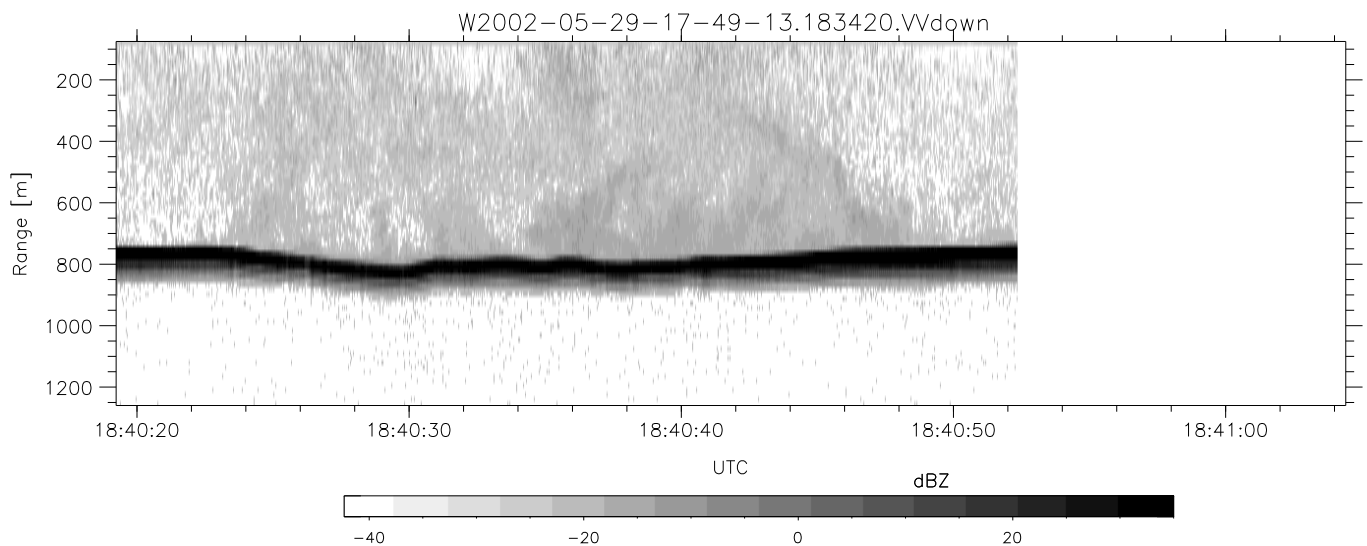
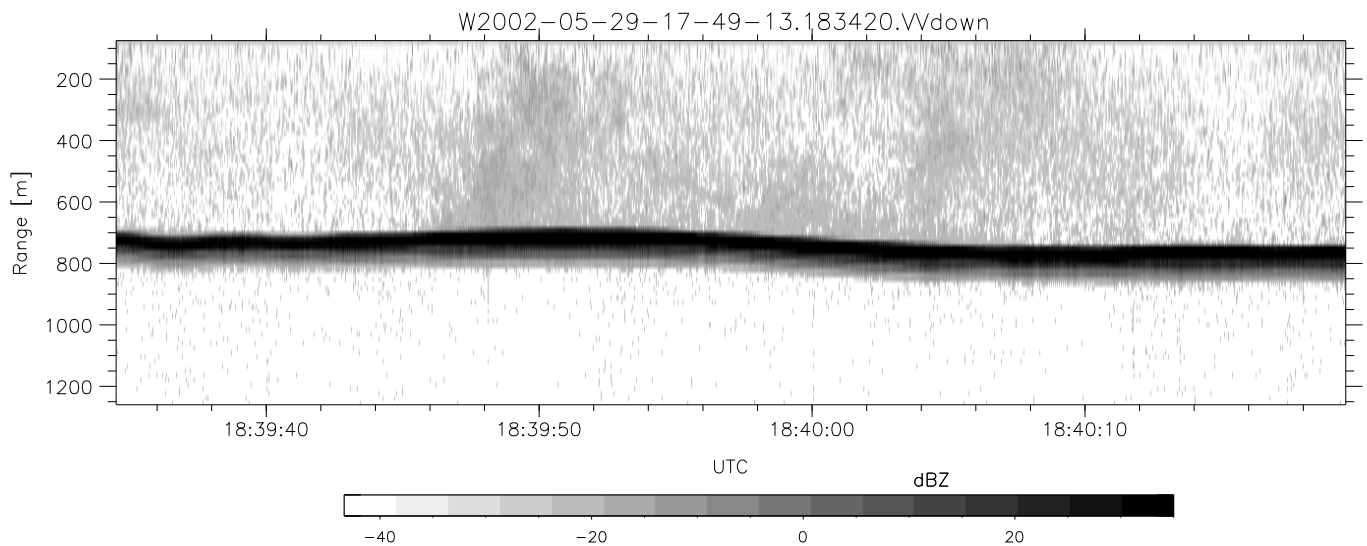
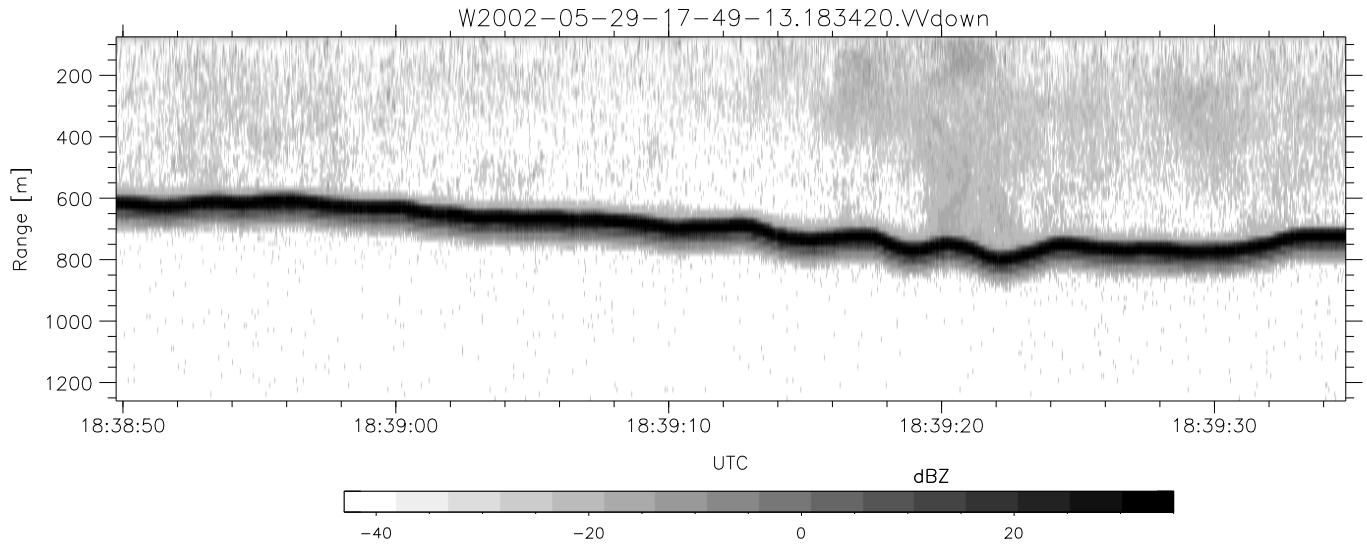
	Min	Max	Mean	Std	Varc%
hhN(dB)	-67.15	-64.39	-65.56	-76.19	8.7
vvN(dB)	-66.78	-63.13	-65.00	-74.92	10.2
hhL(dB)	-22.72	-9.24	-15.29	-17.90	54.9
vvL(dB)	-24.04	-13.00	-17.99	-21.81	41.4
ppN(m/s)	-12.19	12.32	-0.04	4.18	
ppT(m/s)	-96.33	97.33	-0.31	33.03	
hh/vv(dB)	-NaN	60.42	-NaN	44.66	-336
vh/hh(dB)	-NaN	-6.65	-25.47	-19.58	388.
hv/vv(dB)	-NaN	-10.91	-29.00	-24.39	289.
hnjmp(dB)	-2.12	2.03	0.15	-9.00	12.2
vnjmp(dB)	-1.83	2.00	0.15	-8.97	12.3



IHOP 2002 (dual-antenna config, modes 1,3,4,7) Data (cal: 49.0,50.0)

W2002-05-29-17-49-13 - PPMAG4  
 IRIG:1,UTC: 17:48:55.12 to 19:39:20.99, Dur: 6625s  
 TimeLngth: 6625.87s, TimeInt: 35ms (27.8pps)  
 TimeCor=-13.0s, DSPDif(mn,mx,min):36,35,217  
 PPS(min,max,std): 22,29,1.22  
 Prof: 30081 to 214206, NumProf(t/r): 184125/10844  
 ProcTime/Recs: 18:34:20-18:40:52/75908-86751  
 MxACQtime: 43ms; DRate: 125.2KB/s; Flags: 0, 0, 0  
 Pulse: 275ns, IFfilt: 5.0MHz; ppPol: HH HV VV  
 TxPol: HHVV, PRF: 20 10 20 10 kHz  
 Range: Delay 75m, Spacing 15m, Gates 80  
 Ave. Pulses: 108, Rng/Prof Aspect@90m/s: 4.6

	Min	Max	Mean	Std	Varc%
hhN(dB)	-67.15	-64.39	-65.56	-76.19	8.7
vvN(dB)	-66.78	-63.13	-65.00	-74.92	10.2
hhL(dB)	-22.72	-9.24	-15.29	-17.90	54.9
vvL(dB)	-24.04	-13.00	-17.99	-21.81	41.4
ppN(m/s)	-12.19	12.32	-0.04	4.18	
ppT(m/s)	-96.33	97.33	-0.31	33.03	
hh/vv(dB)	-NaN	60.42	-NaN	44.66	-336
vh/hh(dB)	-NaN	-6.65	-25.47	-19.58	388.
hv/vv(dB)	-NaN	-10.91	-29.00	-24.39	289.
hnjmp(dB)	-2.12	2.03	0.15	-9.00	12.2
vnjmp(dB)	-1.83	2.00	0.15	-8.97	12.3



IHOP 2002 (dual-antenna config, modes 1,3,4,7) Data (cal: 49.0,50.0)

W2002-05-29-17-49-13 - PPMAG4  
 IRIG:1,UTC: 17:48:55.12 to 19:39:20.99, Dur: 6625s  
 TimeLngth: 6625.87s, TimeInt: 35ms (27.8pps)  
 TimeCor=-13.0s, DSPDif(mn,mx,min):36,35,217  
 PPS(min,max,std): 22,29,1.22  
 Prof: 30081 to 214206, NumProf(t/r): 184125/10844  
 ProcTime/Recs: 18:34:20-18:40:52/75908-86751  
 MxACQtime: 43ms; DRate: 125.2KB/s; Flags: 0, 0, 0  
 Pulse: 275ns, IFfilt: 5.0MHz; ppPol: HH HV VV  
 TxPol: HHVV, PRF: 20 10 20 10 kHz  
 Range: Delay 75m, Spacing 15m, Gates 80  
 Ave. Pulses: 108, Rng/Prof Aspect@90m/s: 4.6

	Min	Max	Mean	Std	Varc%
hhN(dB)	-67.15	-64.39	-65.56	-76.19	8.7
vvN(dB)	-66.78	-63.13	-65.00	-74.92	10.2
hhL(dB)	-22.72	-9.24	-15.29	-17.90	54.9
vvL(dB)	-24.04	-13.00	-17.99	-21.81	41.4
ppN(m/s)	-12.19	12.32	-0.04	4.18	
ppT(m/s)	-96.33	97.33	-0.31	33.03	
hh/vv(dB)	-NaN	60.42	-NaN	44.66	-336
vh/hh(dB)	-NaN	-6.65	-25.47	-19.58	388.
hv/vv(dB)	-NaN	-10.91	-29.00	-24.39	289.
hnjmp(dB)	-2.12	2.03	0.15	-9.00	12.2
vnjmp(dB)	-1.83	2.00	0.15	-8.97	12.3