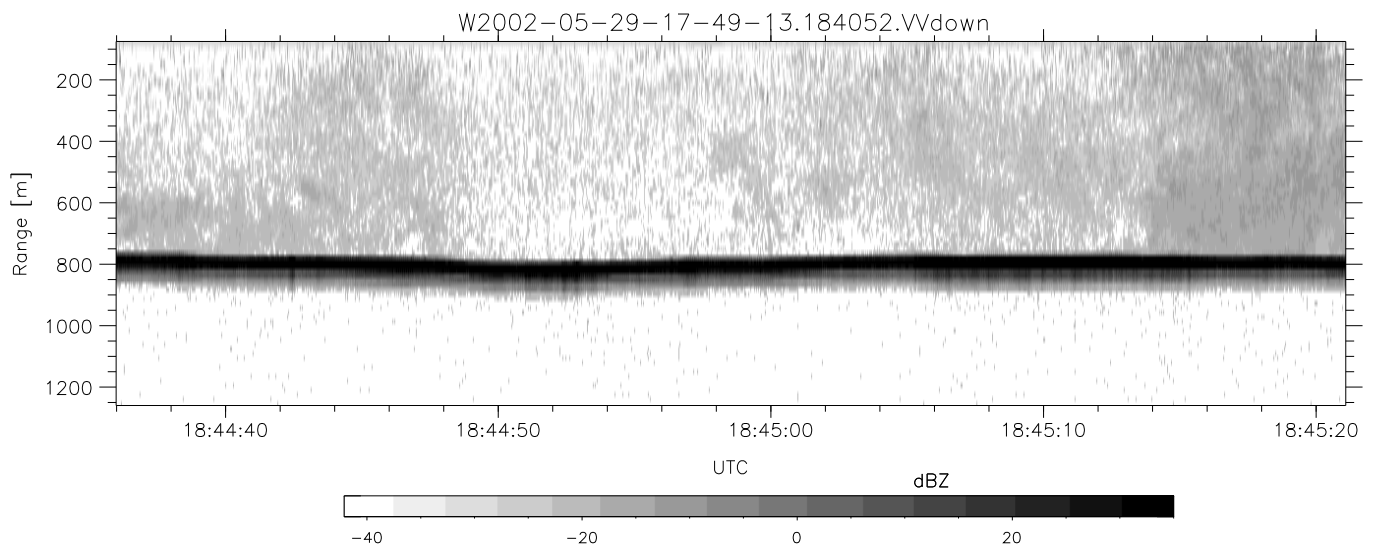
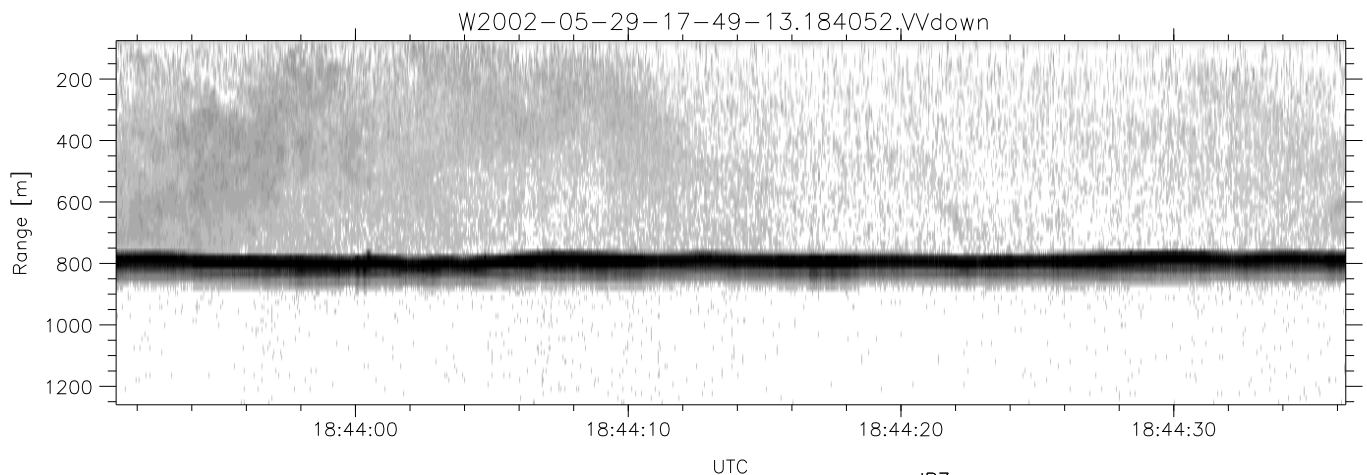
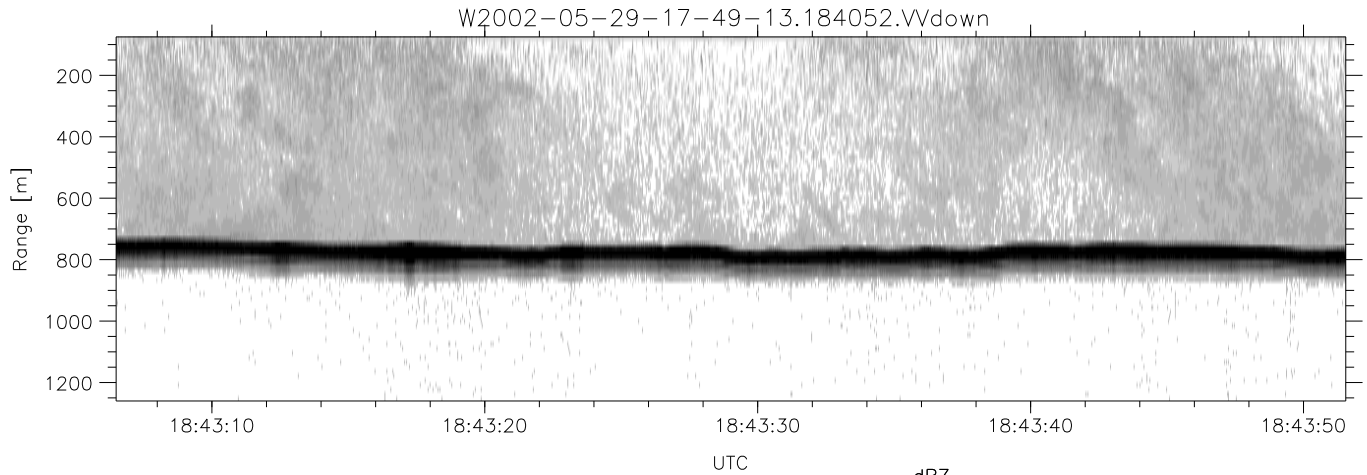


IHOP 2002 (dual-antenna config, modes 1,3,4,7) Data (cal: 49.0,50.0)

W2002-05-29-17-49-13 - PPMAG4  
 IRIG:1,UTC: 17:48:55.12 to 19:39:20.99, Dur: 6625s  
 TimeLngth: 6625.87s, TimeInt: 35ms (27.8pps)  
 TimeCor=-13.0s, DSPDif(mn,mx,min):36,35,237  
 PPS(min,max,std): 22,29,1.19  
 Prof: 30081 to 214206, NumProf(t/r): 184125/10844  
 ProcTime/Recs: 18:40:52-18:47:23/86752-97595  
 MxACQtime: 43ms; DRate: 125.2KB/s; Flags: 0, 0, 0  
 Pulse: 275ns, IFfilt: 5.0MHz; ppPol: HH HV VV  
 TxPol: HHVV, PRF: 20 10 20 10 kHz  
 Range: Delay 75m, Spacing 15m, Gates 80  
 Ave. Pulses: 108, Rng/Prof Aspect@90m/s: 4.6

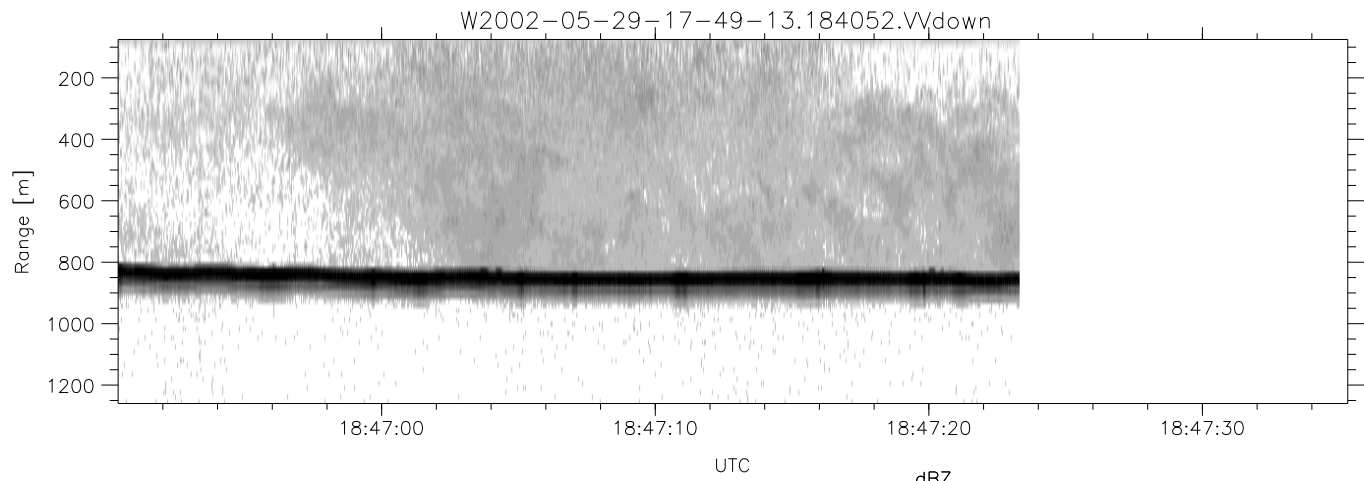
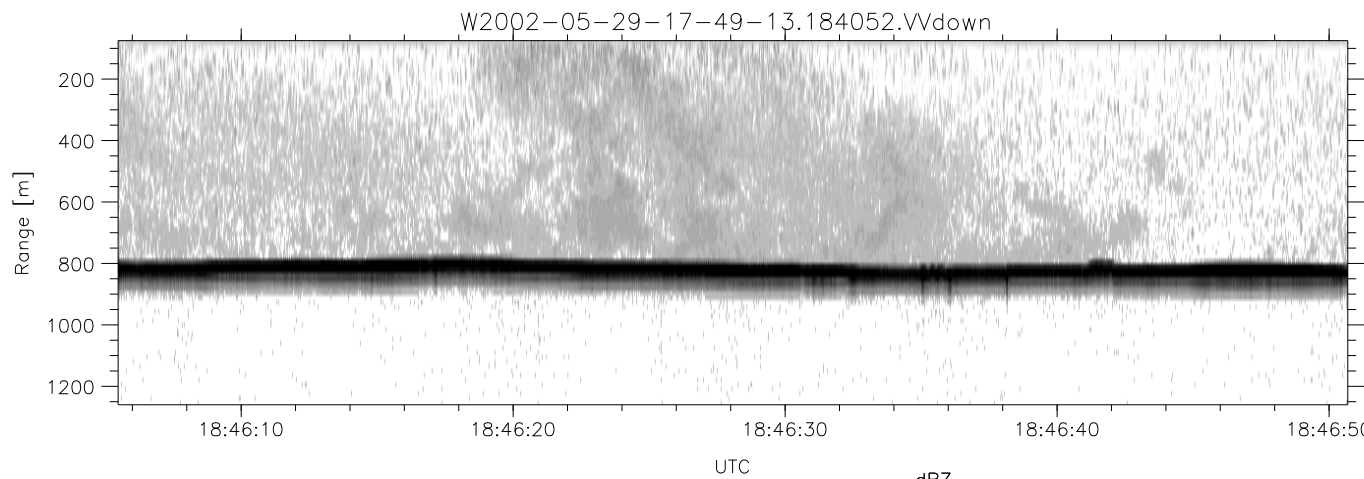
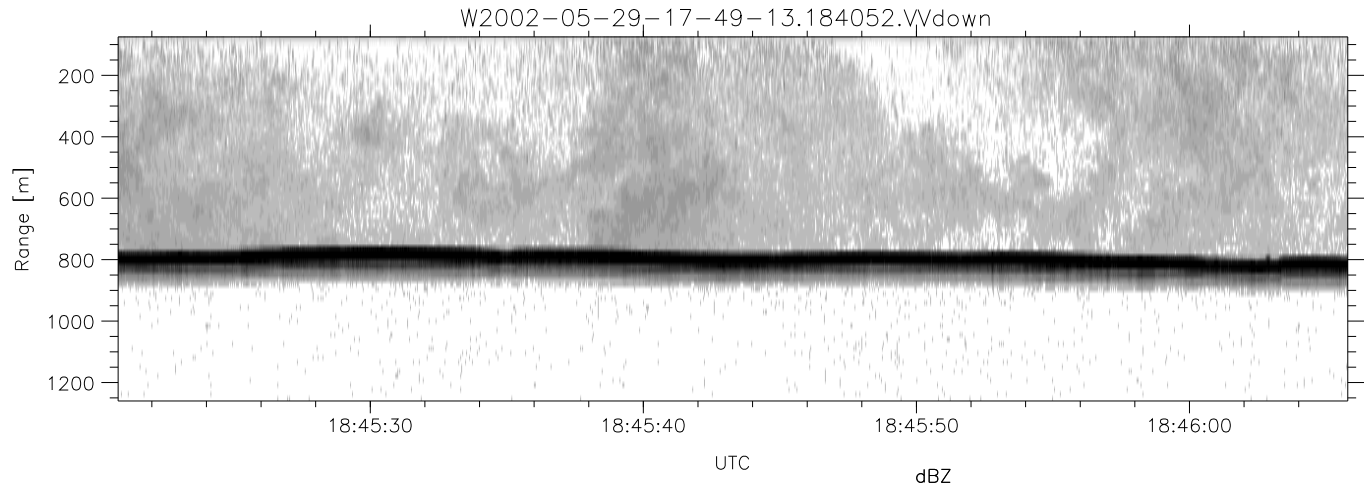
	Min	Max	Mean	Std	Varc%
hhN(dB)	-66.97	-64.05	-65.63	-76.27	8.6
vvN(dB)	-66.33	-63.42	-64.77	-75.26	8.9
hhL(dB)	-23.48	-9.48	-15.48	-18.61	48.7
vvL(dB)	-20.49	-13.48	-18.39	-24.30	25.6
ppN(m/s)	-12.23	12.78	-0.03	4.15	
ppT(m/s)	-96.58	100.95	-0.22	32.81	
hh/vv(dB)	-NaN	52.39	15.34	33.73	6901
vh/hh(dB)	-NaN	-29.15	-34.66	-35.20	88.3
hv/vv(dB)	-NaN	-34.17	-46.87	-45.61	133.
hnjmp(dB)	-1.93	2.13	0.15	-9.00	12.2
vnjmp(dB)	-1.84	2.05	0.14	-8.94	12.4



IHOP 2002 (dual-antenna config, modes 1,3,4,7) Data (cal: 49.0,50.0)

W2002-05-29-17-49-13 - PPMAG4  
 IRIG:1,UTC: 17:48:55.12 to 19:39:20.99, Dur: 6625s  
 TimeLngth: 6625.87s, TimeInt: 35ms (27.8pps)  
 TimeCor=-13.0s, DSPDif(mn,mx,min):36,35,237  
 PPS(min,max,std): 22,29,1.19  
 Prof: 30081 to 214206, NumProf(t/r): 184125/10844  
 ProcTime/Recs: 18:40:52-18:47:23/86752-97595  
 MxACQtime: 43ms; DRate: 125.2KB/s; Flags: 0, 0, 0  
 Pulse: 275ns, IFfilt: 5.0MHz; ppPol: HH HV VV  
 TxPol: HHVV, PRF: 20 10 20 10 kHz  
 Range: Delay 75m, Spacing 15m, Gates 80  
 Ave. Pulses: 108, Rng/Prof Aspect@90m/s: 4.6

	Min	Max	Mean	Std	Varc%
hhN(dB)	-66.97	-64.05	-65.63	-76.27	8.6
vvN(dB)	-66.33	-63.42	-64.77	-75.26	8.9
hhL(dB)	-23.48	-9.48	-15.48	-18.61	48.7
vvL(dB)	-20.49	-13.48	-18.39	-24.30	25.6
ppN(m/s)	-12.23	12.78	-0.03	4.15	
ppT(m/s)	-96.58	100.95	-0.22	32.81	
hh/vv(dB)	-NaN	52.39	15.34	33.73	6901
vh/hh(dB)	-NaN	-29.15	-34.66	-35.20	88.3
hv/vv(dB)	-NaN	-34.17	-46.87	-45.61	133.
hnjmp(dB)	-1.93	2.13	0.15	-9.00	12.2
vnjmp(dB)	-1.84	2.05	0.14	-8.94	12.4



IHOP 2002 (dual-antenna config, modes 1,3,4,7) Data (cal: 49.0,50.0)

W2002-05-29-17-49-13 - PPMAG4  
 IRIG:1,UTC: 17:48:55.12 to 19:39:20.99, Dur: 6625s  
 TimeLngth: 6625.87s, TimeInt: 35ms (27.8pps)  
 TimeCor=-13.0s, DSPDif(mn,mx,min):36,35,237  
 PPS(min,max,std): 22,29,1.19  
 Prof: 30081 to 214206, NumProf(t/r): 184125/10844  
 ProcTime/Recs: 18:40:52-18:47:23/86752-97595  
 MxACQtime: 43ms; DRate: 125.2KB/s; Flags: 0, 0, 0  
 Pulse: 275ns, IFfilt: 5.0MHz; ppPol: HH HV VV  
 TxPol: HHVV, PRF: 20 10 20 10 kHz  
 Range: Delay 75m, Spacing 15m, Gates 80  
 Ave. Pulses: 108, Rng/Prof Aspect@90m/s: 4.6

	Min	Max	Mean	Std	Varc%
hhN(dB)	-66.97	-64.05	-65.63	-76.27	8.6
vvN(dB)	-66.33	-63.42	-64.77	-75.26	8.9
hhL(dB)	-23.48	-9.48	-15.48	-18.61	48.7
vvL(dB)	-20.49	-13.48	-18.39	-24.30	25.6
ppN(m/s)	-12.23	12.78	-0.03	4.15	
ppT(m/s)	-96.58	100.95	-0.22	32.81	
hh/vv(dB)	-NaN	52.39	15.34	33.73	6901
vh/hh(dB)	-NaN	-29.15	-34.66	-35.20	88.3
hv/vv(dB)	-NaN	-34.17	-46.87	-45.61	133.
hnjmp(dB)	-1.93	2.13	0.15	-9.00	12.2
vnjmp(dB)	-1.84	2.05	0.14	-8.94	12.4