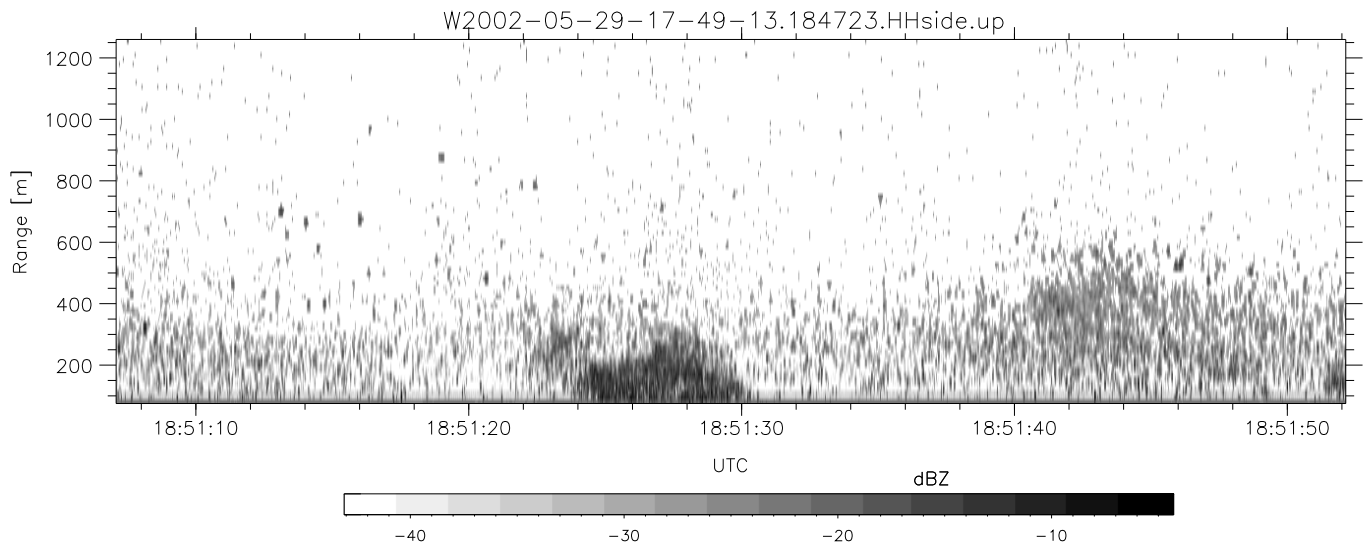
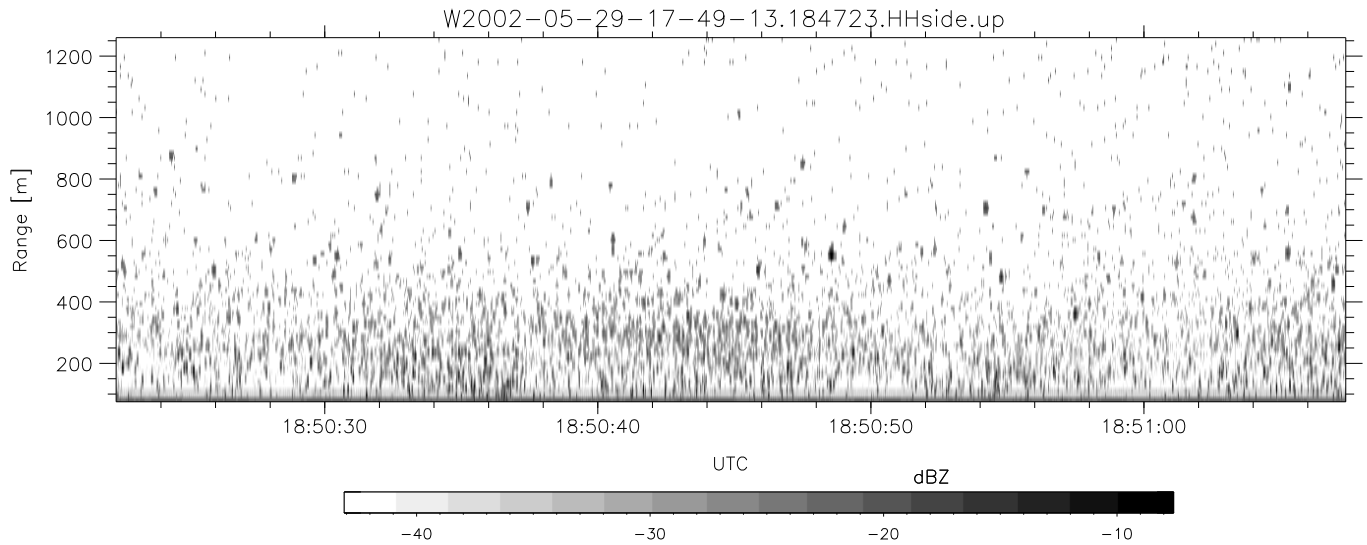
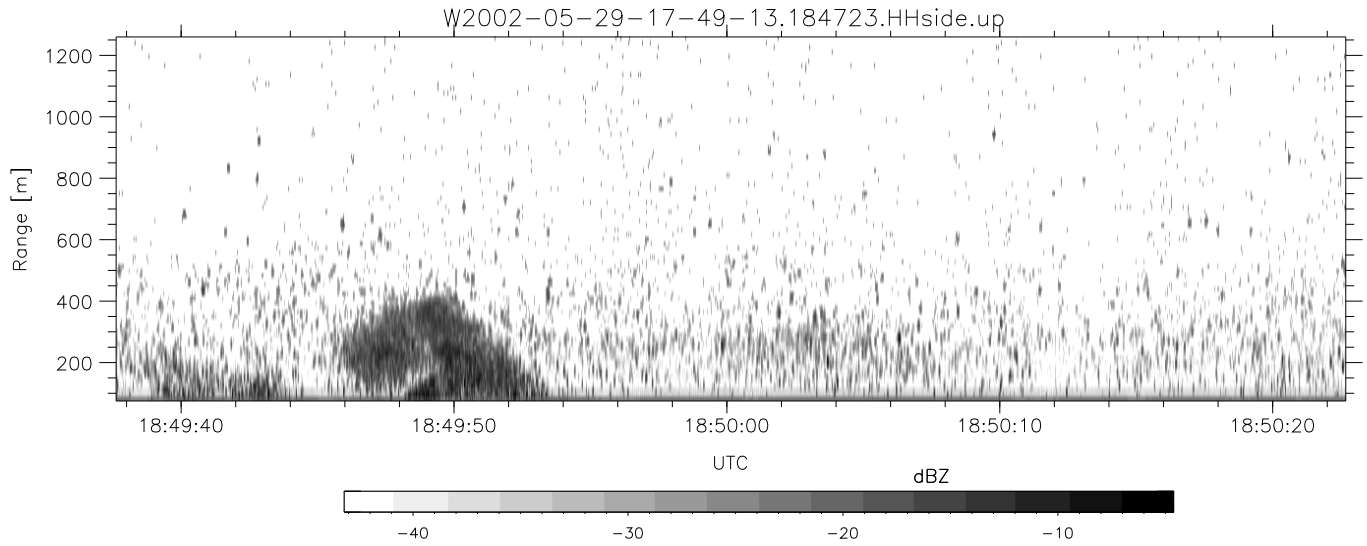


IHOP 2002 (dual-antenna config, modes 1,3,4,7) Data (cal: 49.0,50.0)

W2002-05-29-17-49-13 - PPMAG4
 IRIG:1,UTC: 17:48:55.12 to 19:39:20.99, Dur: 6625s
 TimeLngth: 6625.87s, TimeInt: 35ms (27.8pps)
 TimeCor=-13.0s, DSPDif(mn,mx,min):35,35,177
 PPS(min,max,std): 24,29,1.12
 Prof: 30081 to 214206, NumProf(t/r): 184125/10844
 ProcTime/Recs: 18:47:23-18:53:54/97596-108439
 MxACQtime: 43ms; DRate: 125.2KB/s; Flags: 0, 0, 0
 Pulse: 275ns, IFfilt: 5.0MHz; ppPol: HH HV VV
 TxPol: HHVV, PRF: 20 10 20 10 kHz
 Range: Delay 75m, Spacing 15m, Gates 80
 Ave. Pulses: 108, Rng/Prof Aspect@90m/s: 4.6

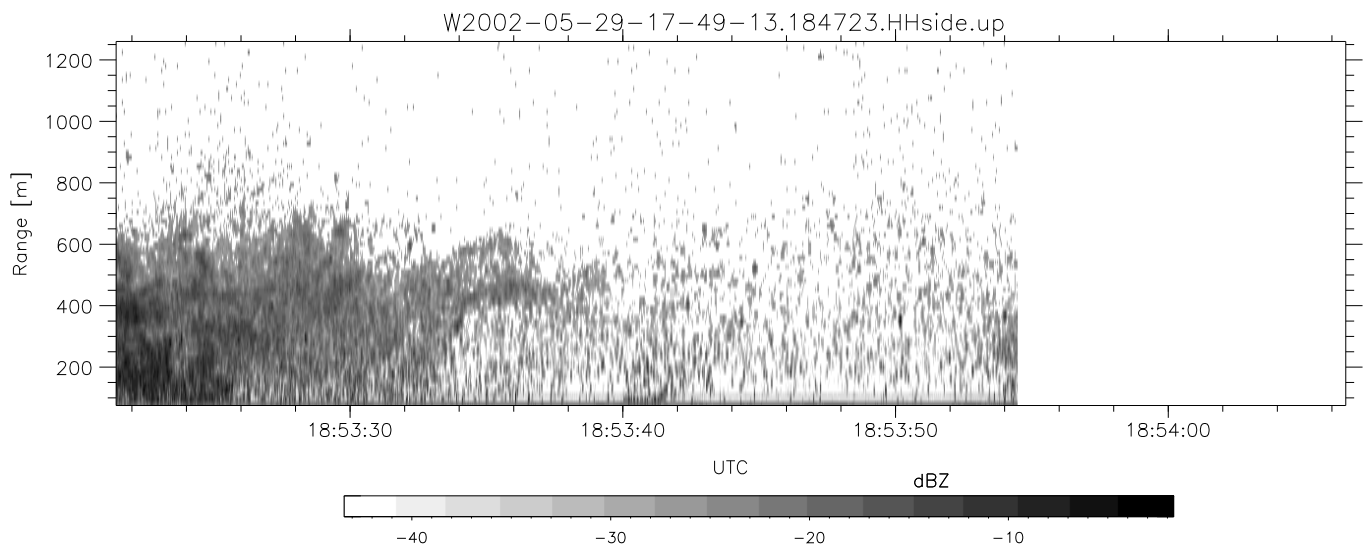
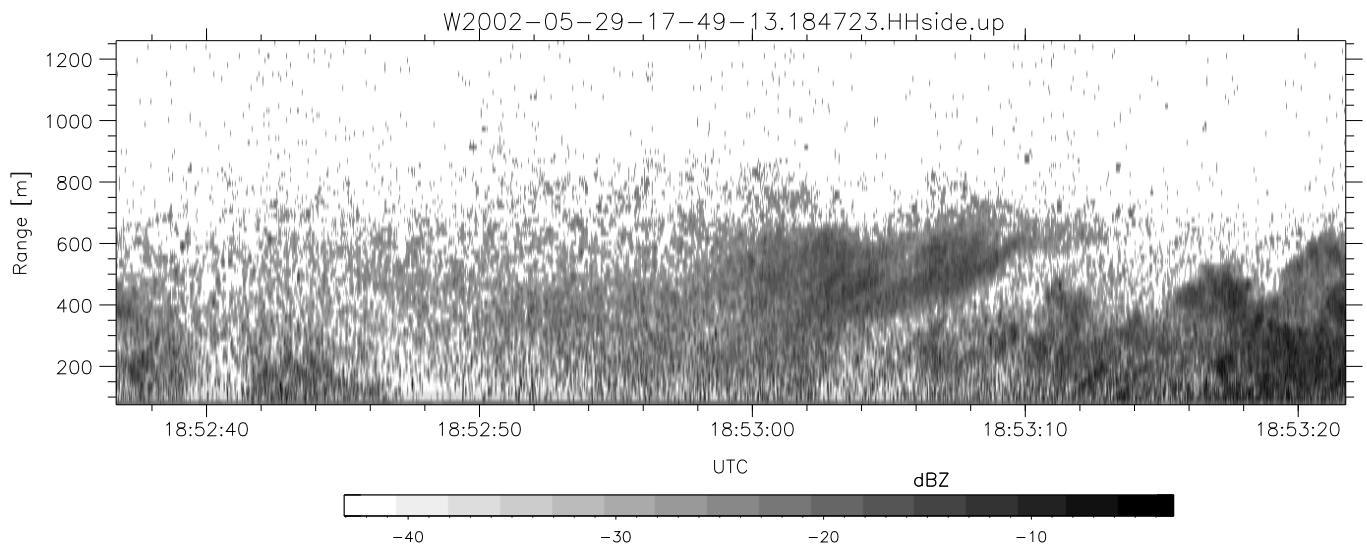
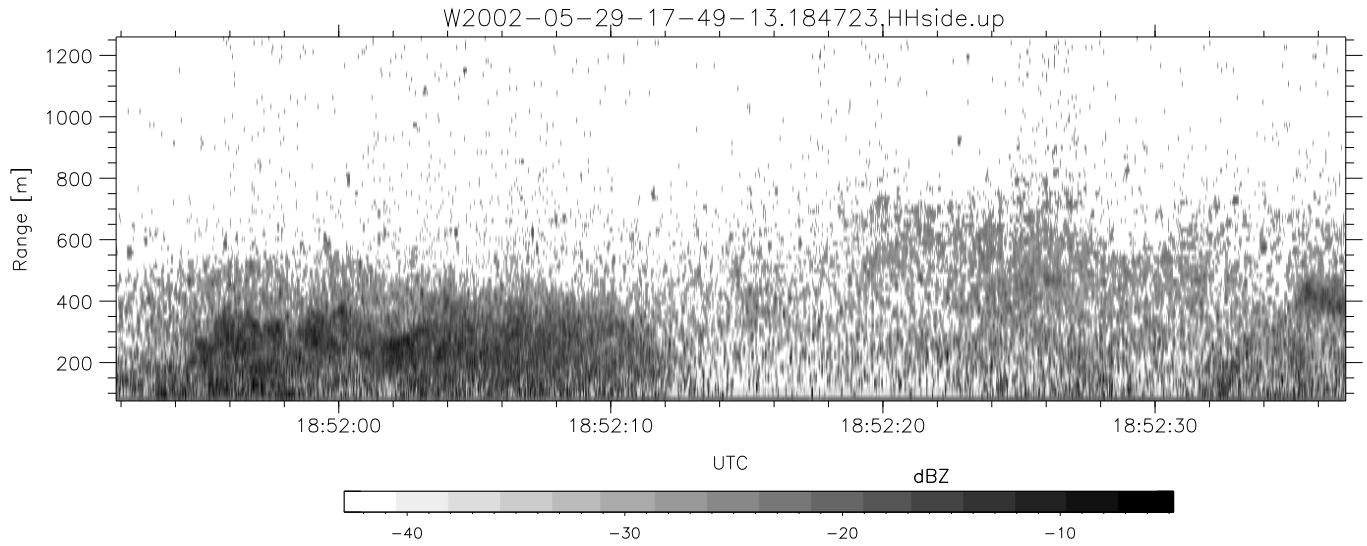
	Min	Max	Mean	Std	Varc%
hhN(dB)	-67.33	-64.17	-65.64	-76.30	8.6
vvN(dB)	-66.32	-62.93	-64.73	-75.11	9.2
hhL(dB)	-21.56	-11.83	-16.57	-21.86	29.6
vvL(dB)	-22.89	-15.43	-18.53	-24.97	22.7
ppN(m/s)	-12.34	12.57	0.00	4.20	
ppT(m/s)	-97.46	99.27	0.02	33.18	
hh/vv(dB)	-NaN	62.86	19.66	39.80	1033
vh/hh(dB)	-NaN	-27.68	-33.53	-34.92	72.6
hv/vv(dB)	-NaN	-34.32	-47.42	-46.26	130.
hnjmp(dB)	-1.79	1.99	0.15	-8.99	12.2
vnjmp(dB)	-1.71	2.14	0.16	-8.93	12.4



IHOP 2002 (dual-antenna config, modes 1,3,4,7) Data (cal: 49.0,50.0)

W2002-05-29-17-49-13 - PPMAG4
 IRIG:1,UTC: 17:48:55.12 to 19:39:20.99, Dur: 6625s
 TimeLngth: 6625.87s, TimeInt: 35ms (27.8pps)
 TimeCor=-13.0s, DSPDif(mn,mx,min):35,35,177
 PPS(min,max,std): 24,29,1.12
 Prof: 30081 to 214206, NumProf(t/r): 184125/10844
 ProcTime/Recs: 18:47:23-18:53:54/97596-108439
 MxACQtime: 43ms; DRate: 125.2KB/s; Flags: 0, 0, 0
 Pulse: 275ns, IFfilt: 5.0MHz; ppPol: HH HV VV
 TxPol: HHVV, PRF: 20 10 20 10 kHz
 Range: Delay 75m, Spacing 15m, Gates 80
 Ave. Pulses: 108, Rng/Prof Aspect@90m/s: 4.6

	Min	Max	Mean	Std	Varc%
hhN(dB)	-67.33	-64.17	-65.64	-76.30	8.6
vvN(dB)	-66.32	-62.93	-64.73	-75.11	9.2
hhL(dB)	-21.56	-11.83	-16.57	-21.86	29.6
vvL(dB)	-22.89	-15.43	-18.53	-24.97	22.7
ppN(m/s)	-12.34	12.57	0.00	4.20	
ppT(m/s)	-97.46	99.27	0.02	33.18	
hh/vv(dB)	-NaN	62.86	19.66	39.80	1033
vh/hh(dB)	-NaN	-27.68	-33.53	-34.92	72.6
hv/vv(dB)	-NaN	-34.32	-47.42	-46.26	130.
hnjmp(dB)	-1.79	1.99	0.15	-8.99	12.2
vnjmp(dB)	-1.71	2.14	0.16	-8.93	12.4



IHOP 2002 (dual-antenna config, modes 1,3,4,7) Data (cal: 49.0,50.0)

W2002-05-29-17-49-13 - PPMAG4
 IRIG:1,UTC: 17:48:55.12 to 19:39:20.99, Dur: 6625s
 TimeLngth: 6625.87s, TimeInt: 35ms (27.8pps)
 TimeCor=-13.0s, DSPDif(mn,mx,min):35,35,177
 PPS(min,max,std): 24,29,1.12
 Prof: 30081 to 214206, NumProf(t/r): 184125/10844
 ProcTime/Recs: 18:47:23-18:53:54/97596-108439
 MxACQtime: 43ms; DRate: 125.2KB/s; Flags: 0, 0, 0
 Pulse: 275ns, IFfilt: 5.0MHz; ppPol: HH HV VV
 TxPol: HHVV, PRF: 20 10 20 10 kHz
 Range: Delay 75m, Spacing 15m, Gates 80
 Ave. Pulses: 108, Rng/Prof Aspect@90m/s: 4.6

	Min	Max	Mean	Std	Varc%
hhN (dB)	-67.33	-64.17	-65.64	-76.30	8.6
vvN (dB)	-66.32	-62.93	-64.73	-75.11	9.2
hhL (dB)	-21.56	-11.83	-16.57	-21.86	29.6
vvL (dB)	-22.89	-15.43	-18.53	-24.97	22.7
ppN (m/s)	-12.34	12.57	0.00	4.20	
ppT (m/s)	-97.46	99.27	0.02	33.18	
hh/vv (dB)	-NaN	62.86	19.66	39.80	1033
vh/hh (dB)	-NaN	-27.68	-33.53	-34.92	72.6
hv/vv (dB)	-NaN	-34.32	-47.42	-46.26	130.
hn_jmp (dB)	-1.79	1.99	0.15	-8.99	12.2
vn_jmp (dB)	-1.71	2.14	0.16	-8.93	12.4