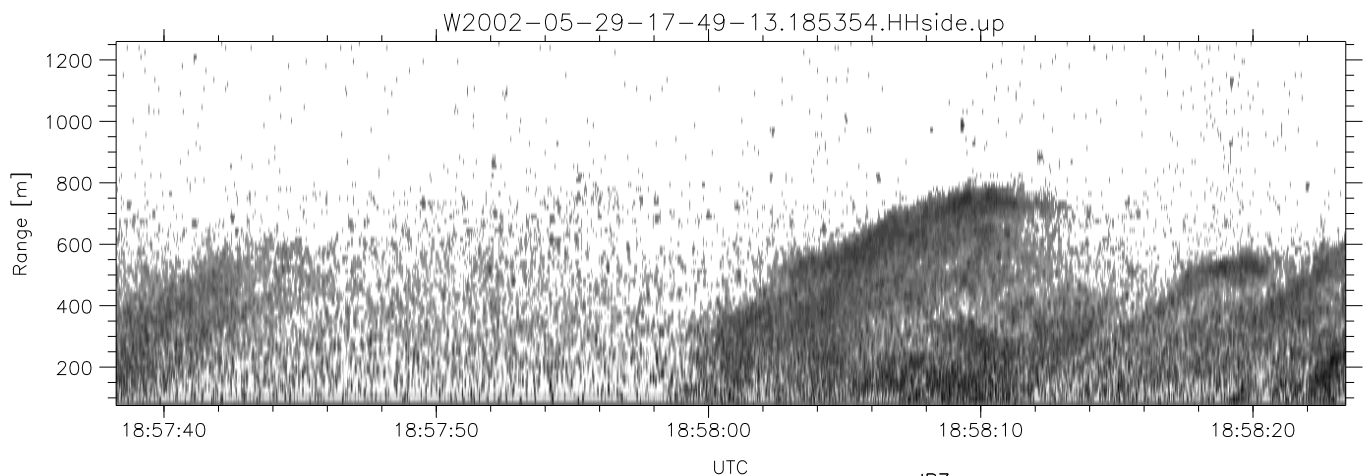
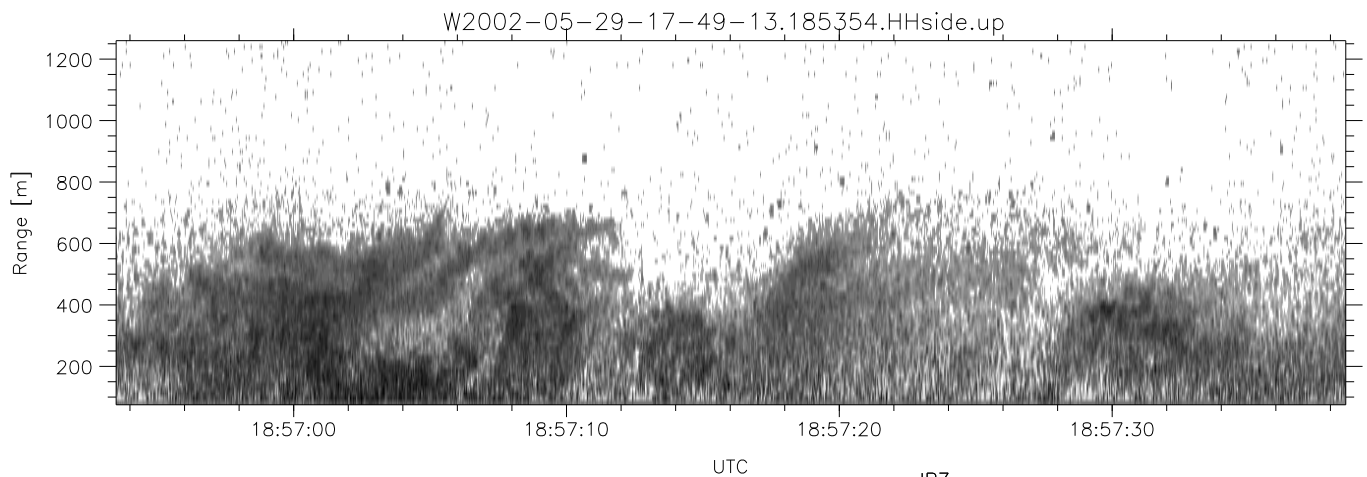
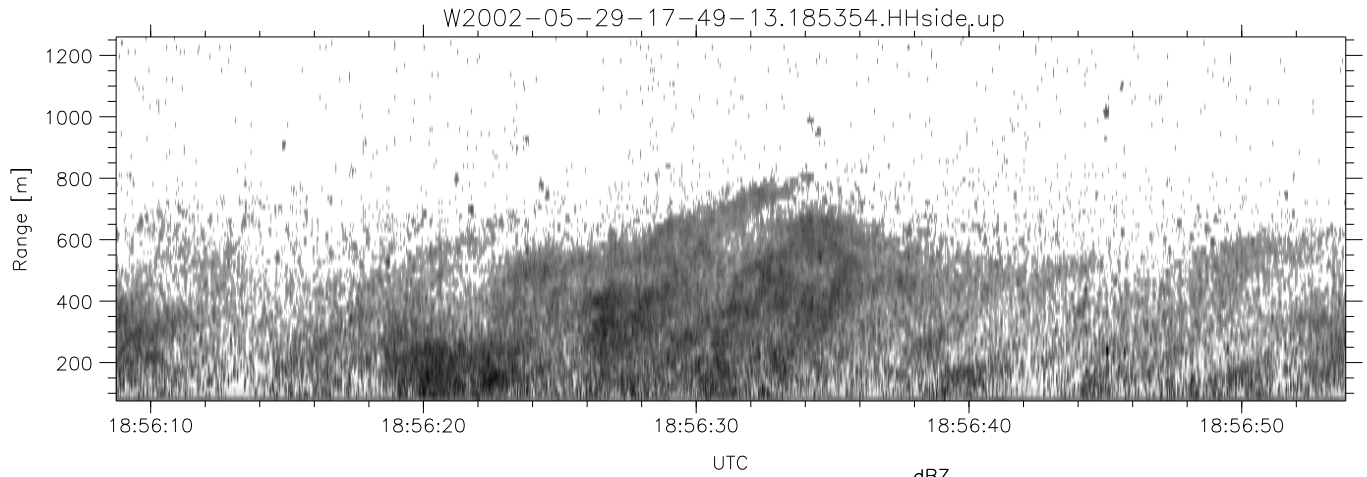


IHOP 2002 (dual-antenna config, modes 1,3,4,7) Data (cal: 49.0,50.0)

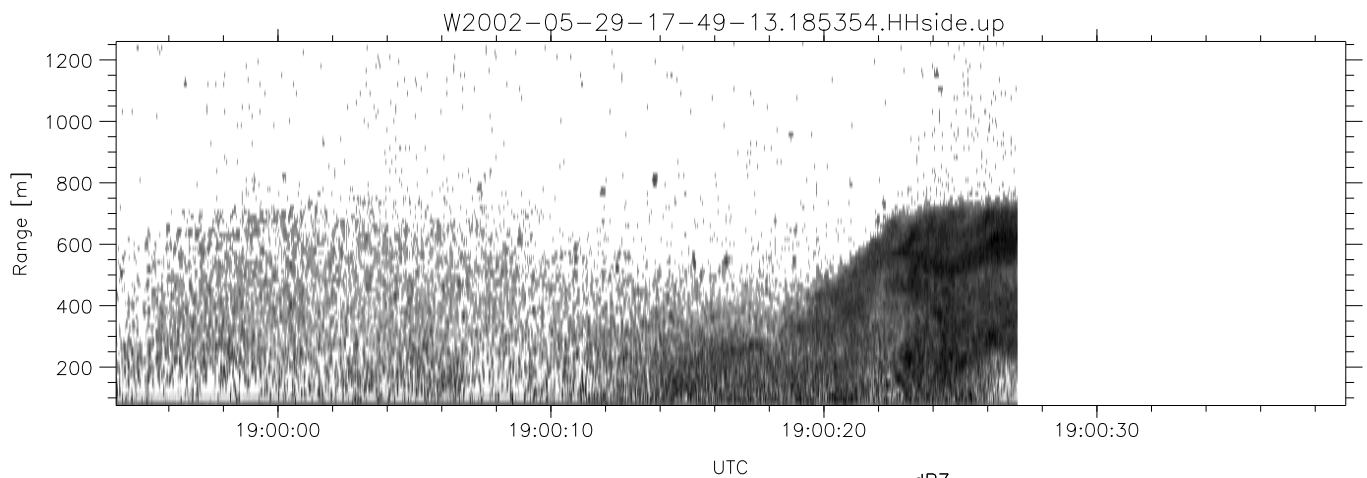
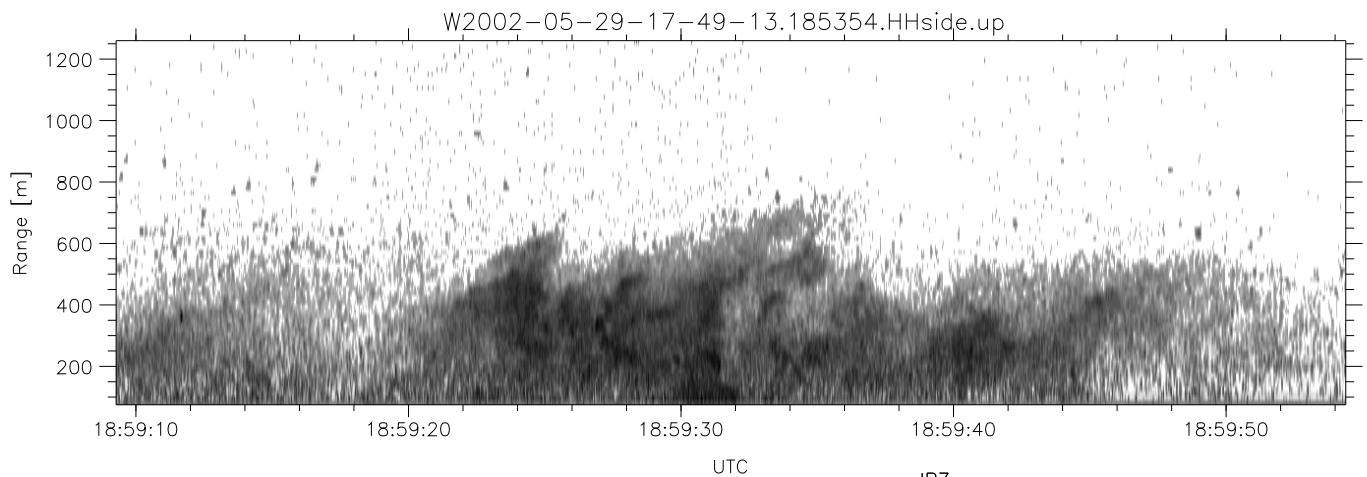
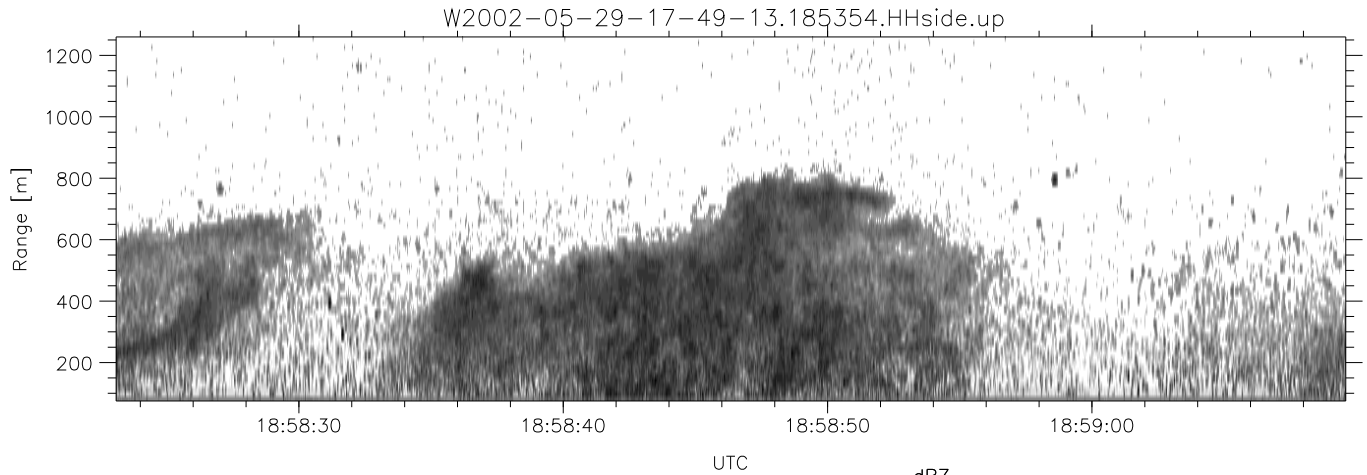
W2002-05-29-17-49-13 - PPMAG4
 IRIG:1,UTC: 17:48:55.12 to 19:39:20.99, Dur: 6625s
 TimeLngth: 6625.87s, TimeInt: 35ms (27.8pps)
 TimeCor=-13.0s, DSPDif(mn,mx,min):36,35,293
 PPS(min,max,std): 16,29,1.53
 Prof: 30081 to 214206, NumProf(t/r): 184125/10844
 ProcTime/Recs: 18:53:54-19:00:27/108440-119283
 MxACQtime: 43ms; DRate: 125.2KB/s; Flags: 0, 0, 0
 Pulse: 275ns, IFfilt: 5.0MHz; ppPol: HH HV VV
 TxPol: HHVV, PRF: 20 10 20 10 kHz
 Range: Delay 75m, Spacing 15m, Gates 80
 Ave. Pulses: 108, Rng/Prof Aspect@90m/s: 4.6

	Min	Max	Mean	Std	Varc%
hhN(dB)	-67.29	-64.30	-65.64	-76.25	8.7
vvN(dB)	-66.38	-63.23	-64.80	-75.25	9.0
hhL(dB)	-21.10	-10.74	-16.15	-21.91	26.6
vvL(dB)	-22.17	-15.15	-17.29	-24.71	18.1
ppN(m/s)	-11.90	12.23	0.12	4.16	
ppT(m/s)	-93.97	96.59	0.93	32.85	
hh/vv(dB)	-NaN	53.90	12.92	36.61	2340
vh/hh(dB)	-NaN	-28.04	-34.65	-35.15	89.0
hv/vv(dB)	-NaN	-34.17	-46.32	-45.07	133.
hh/jmp(dB)	-1.87	2.04	0.14	-9.01	12.2
vv/jmp(dB)	-1.98	1.95	0.15	-8.91	12.4



IHOP 2002 (dual-antenna config, modes 1,3,4,7) Data (cal: 49.0,50.0)

W2002-05-29-17-49-13 - PPMAG4						
IRIG:1,UTC: 17:48:55.12 to 19:39:20.99, Dur: 6625s	hhN (dB)	Min	Max	Mean	Std	Varc%
TimeLngth: 6625.87s, TimeInt: 35ms (27.8pps)	vvN (dB)	-67.29	-64.30	-65.64	-76.25	8.7
TimeCor=-13.0s, DSPDif(mn,mx,min):36,35,293	hhL (dB)	-66.38	-63.23	-64.80	-75.25	9.0
PPS(min,max,std): 16,29,1.53	vvL (dB)	-21.10	-10.74	-16.15	-21.91	26.6
Prof: 30081 to 214206, NumProf(t/r): 184125/10844	ppN (m/s)	-22.17	-15.15	-17.29	-24.71	18.1
ProcTime/Recs: 18:53:54-19:00:27/108440-119283	ppT (m/s)	-11.90	12.23	0.12	4.16	
MxACQtime: 43ms; DRate: 125.2KB/s; Flags: 0, 0, 0	hh/vv (dB)	-93.97	96.59	0.93	32.85	
Pulse: 275ns, IFfilt: 5.0MHz; ppPol: HH HV VV	vh/vh (dB)	-NaN	53.90	12.92	36.61	2340
TxPol: HHVV, PRF: 20 10 20 10 kHz	hv/hv (dB)	-NaN	-28.04	-34.65	-35.15	89.0
Range: Delay 75m, Spacing 15m, Gates 80	hn/jmp (dB)	-NaN	-34.17	-46.32	-45.07	133.
Ave. Pulses: 108, Rng/Prof Aspect@90m/s: 4.6	hn/jmp (dB)	-1.87	2.04	0.14	-9.01	12.2
	vn/jmp (dB)	-1.98	1.95	0.15	-8.91	12.4



IHOP 2002 (dual-antenna config, modes 1,3,4,7) Data (cal: 49.0,50.0)

W2002-05-29-17-49-13 - PPMAG4
 IRIG:1,UTC: 17:48:55.12 to 19:39:20.99, Dur: 6625s
 TimeLngth: 6625.87s, TimeInt: 35ms (27.8pps)
 TimeCor=-13.0s, DSPDif(mn,mx,min):36,35,293
 PPS(min,max,std): 16,29,1.53
 Prof: 30081 to 214206, NumProf(t/r): 184125/10844
 ProcTime/Recs: 18:53:54-19:00:27/108440-119283
 MxACQtime: 43ms; DRate: 125.2KB/s; Flags: 0, 0, 0
 Pulse: 275ns, IFfilt: 5.0MHz; ppPol: HH HV VV
 TxPol: HHVV, PRF: 20 10 20 10 kHz
 Range: Delay 75m, Spacing 15m, Gates 80
 Ave. Pulses: 108, Rng/Prof Aspect@90m/s: 4.6

	Min	Max	Mean	Std	Varc%
hhN(dB)	-67.29	-64.30	-65.64	-76.25	8.7
vvN(dB)	-66.38	-63.23	-64.80	-75.25	9.0
hhL(dB)	-21.10	-10.74	-16.15	-21.91	26.6
vvL(dB)	-22.17	-15.15	-17.29	-24.71	18.1
ppN(m/s)	-11.90	12.23	0.12	4.16	
ppT(m/s)	-93.97	96.59	0.93	32.85	
hh/vv(dB)	-NaN	53.90	12.92	36.61	2340
vh/hh(dB)	-NaN	-28.04	-34.65	-35.15	89.0
hv/vv(dB)	-NaN	-34.17	-46.32	-45.07	133.
hnjmp(dB)	-1.87	2.04	0.14	-9.01	12.2
vnjmp(dB)	-1.98	1.95	0.15	-8.91	12.4