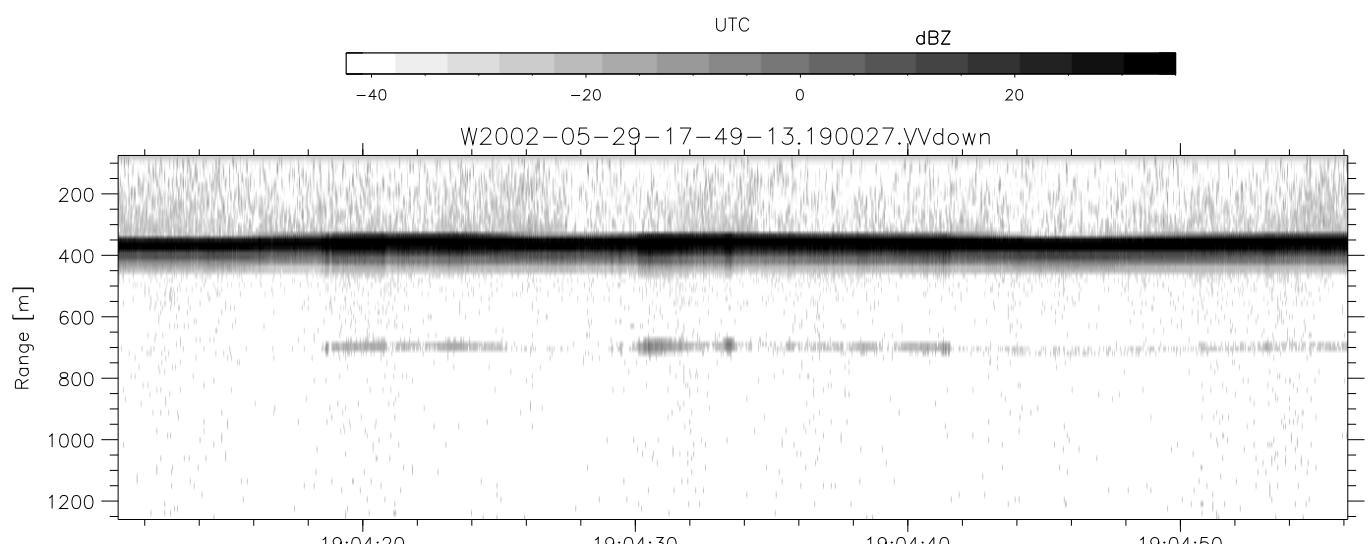
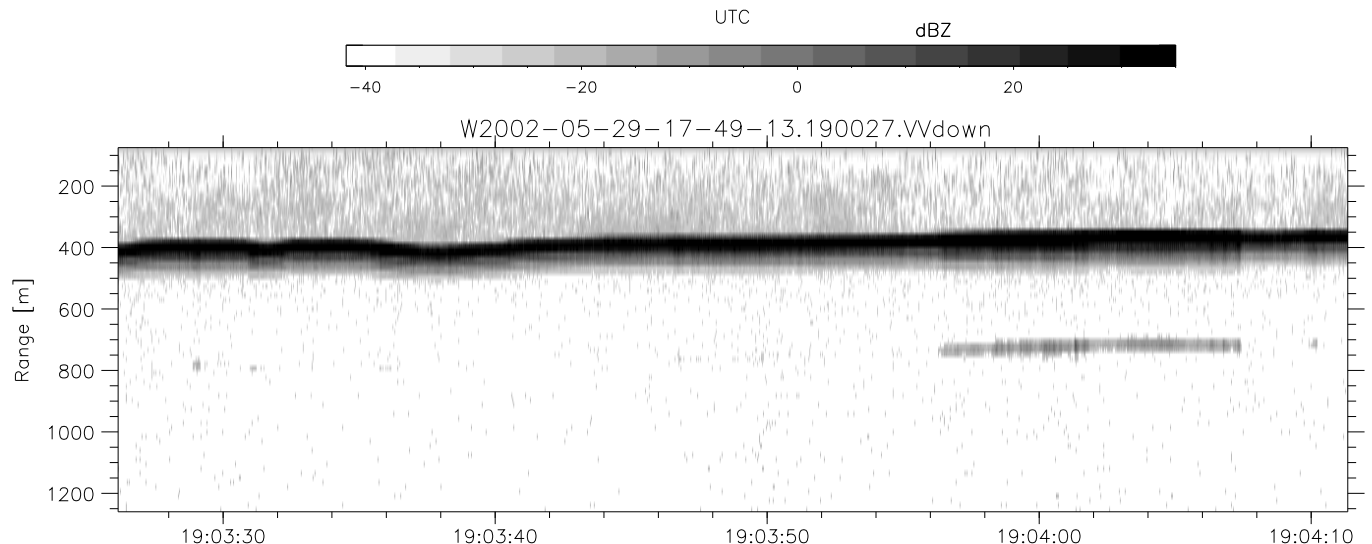
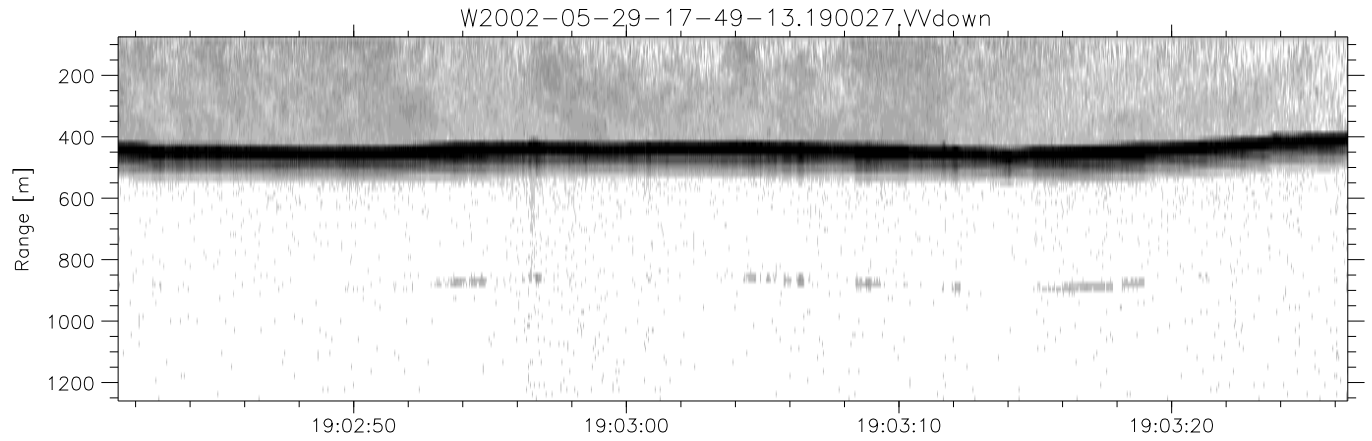


IHOP 2002 (dual-antenna config, modes 1,3,4,7) Data (cal: 49.0,50.0)

W2002-05-29-17-49-13 - PPMAG4
 IRIG:1,UTC: 17:48:55.12 to 19:39:20.99, Dur: 6625s
 TimeLngth: 6625.87s, TimeInt: 35ms (27.8pps)
 TimeCor=-13.0s, DSPDif(mn,mx,min):36,35,223
 PPS(min,max,std): 23,29,1.19
 Prof: 30081 to 214206, NumProf(t/r): 184125/10844
 ProcTime/Recs: 19:00:27-19:06:58/119284-130127
 MxACQtime: 43ms; DRate: 125.2KB/s; Flags: 0, 0, 0
 Pulse: 275ns, IFfilt: 5.0MHz; ppPol: HH HV VV
 TxPol: HHVV, PRF: 20 10 20 10 kHz
 Range: Delay 75m, Spacing 15m, Gates 80
 Ave. Pulses: 108, Rng/Prof Aspect@90m/s: 4.6

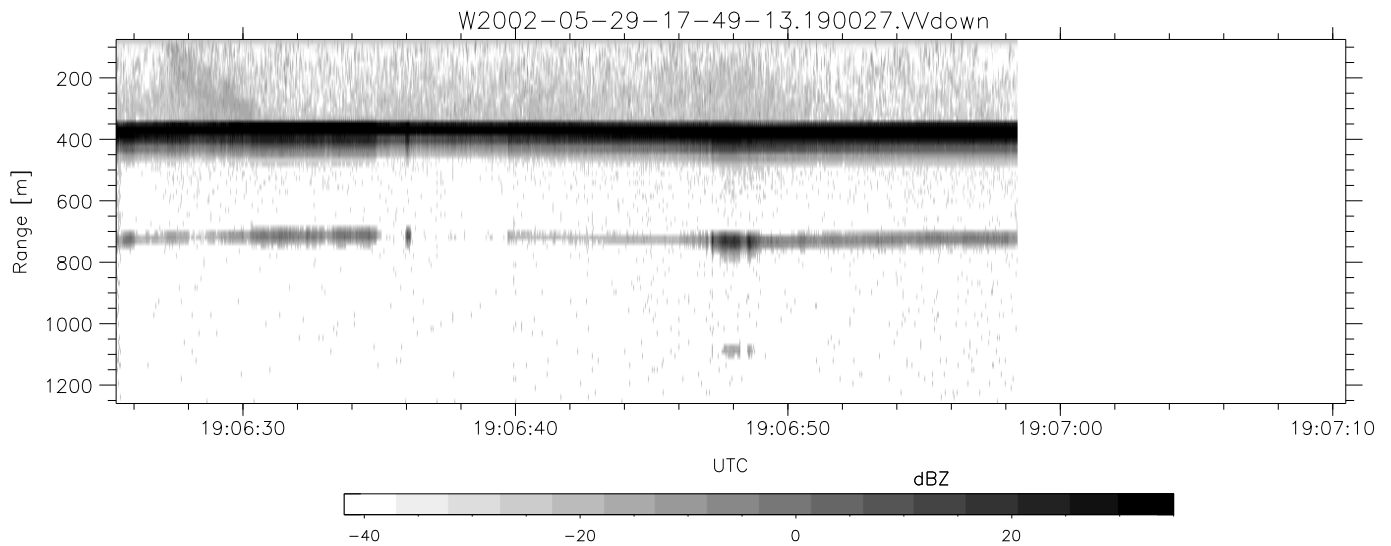
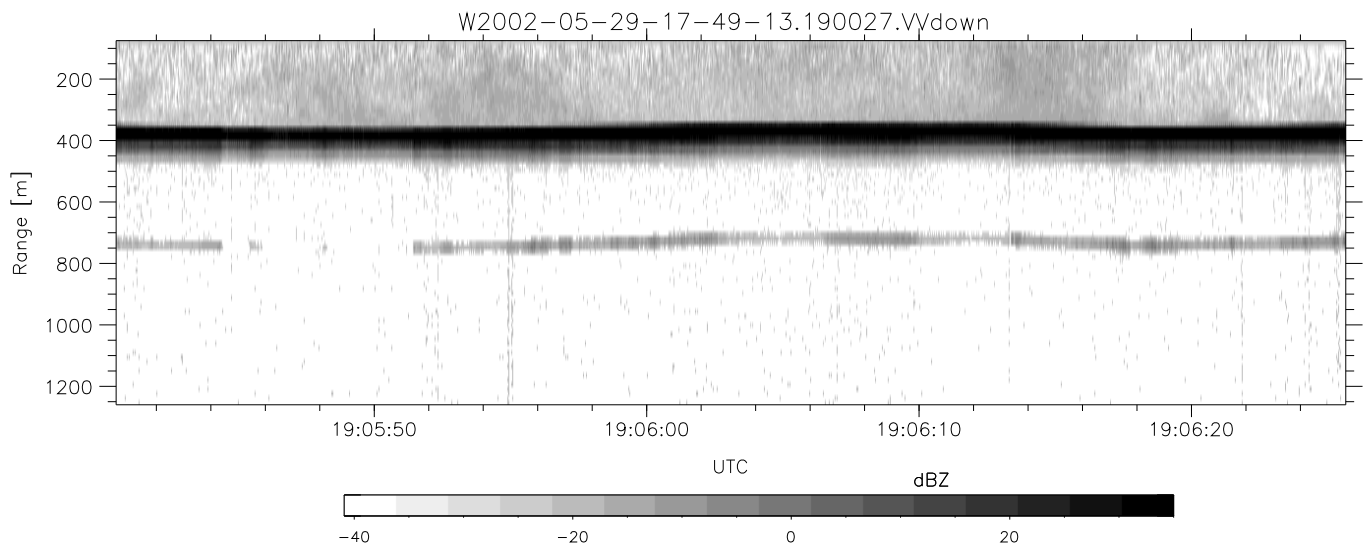
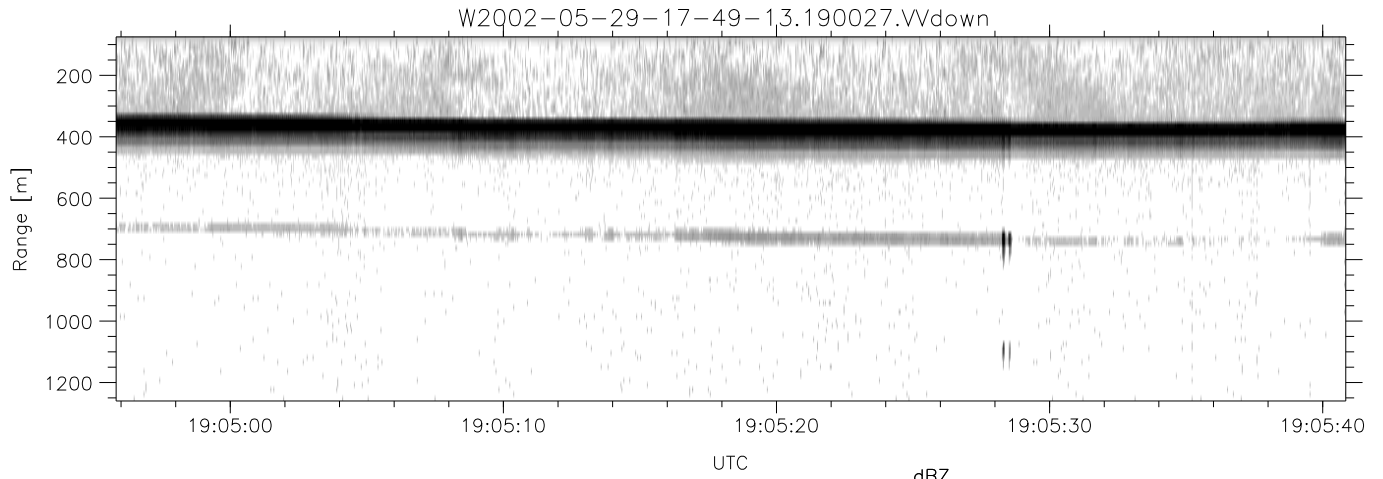
	Min	Max	Mean	Std	Varc%
hhN(dB)	-67.20	-64.30	-65.66	-76.24	8.7
vvN(dB)	-66.21	-63.20	-64.79	-74.99	9.6
hhL(dB)	-19.61	-10.82	-15.46	-21.87	22.8
vvL(dB)	-22.78	-14.50	-16.89	-24.12	18.9
ppN(m/s)	-12.45	12.89	0.07	4.21	
ppT(m/s)	-98.39	101.81	0.57	33.22	
hh/vv(dB)	-NaN	62.67	-NaN	44.29	-107
vh/hh(dB)	-NaN	-26.50	-35.41	-35.05	108.
hv/vv(dB)	-NaN	-21.29	-46.15	-42.59	226.
hnjmp(dB)	-2.09	2.30	0.17	-8.92	12.3
vnjmp(dB)	-1.77	1.75	0.15	-8.93	12.3



IHOP 2002 (dual-antenna config, modes 1,3,4,7) Data (cal: 49.0,50.0)

W2002-05-29-17-49-13 - PPMAG4
 IRIG:1,UTC: 17:48:55.12 to 19:39:20.99, Dur: 6625s
 TimeLngth: 6625.87s, TimeInt: 35ms (27.8pps)
 TimeCor=-13.0s, DSPDif(mn,mx,min):36,35,223
 PPS(min,max,std): 23,29,1.19
 Prof: 30081 to 214206, NumProf(t/r): 184125/10844
 ProcTime/Recs: 19:00:27-19:06:58/119284-130127
 MxACQtime: 43ms; DRate: 125.2KB/s; Flags: 0, 0, 0
 Pulse: 275ns, IFfilt: 5.0MHz; ppPol: HH HV VV
 TxPol: HHVV, PRF: 20 10 20 10 kHz
 Range: Delay 75m, Spacing 15m, Gates 80
 Ave. Pulses: 108, Rng/Prof Aspect@90m/s: 4.6

	Min	Max	Mean	Std	Varc%
hhN(dB)	-67.20	-64.30	-65.66	-76.24	8.7
vvN(dB)	-66.21	-63.20	-64.79	-74.99	9.6
hhL(dB)	-19.61	-10.82	-15.46	-21.87	22.8
vvL(dB)	-22.78	-14.50	-16.89	-24.12	18.9
ppN(m/s)	-12.45	12.89	0.07	4.21	
ppT(m/s)	-98.39	101.81	0.57	33.22	
hh/vv(dB)	-NaN	62.67	-NaN	44.29	-107
vh/hh(dB)	-NaN	-26.50	-35.41	-35.05	108.
hv/vv(dB)	-NaN	-21.29	-46.15	-42.59	226.
hnjmp(dB)	-2.09	2.30	0.17	-8.92	12.3
vnjmp(dB)	-1.77	1.75	0.15	-8.93	12.3



IHOP 2002 (dual-antenna config, modes 1,3,4,7) Data (cal: 49.0,50.0)

W2002-05-29-17-49-13 - PPMAG4
 IRIG:1,UTC: 17:48:55.12 to 19:39:20.99, Dur: 6625s
 TimeLngth: 6625.87s, TimeInt: 35ms (27.8pps)
 TimeCor=-13.0s, DSPDif(mn,mx,min):36,35,223
 PPS(min,max,std): 23,29,1.19
 Prof: 30081 to 214206, NumProf(t/r): 184125/10844
 ProcTime/Recs: 19:00:27-19:06:58/119284-130127
 MxACQtime: 43ms; DRate: 125.2KB/s; Flags: 0, 0, 0
 Pulse: 275ns, IFfilt: 5.0MHz; ppPol: HH HV VV
 TxPol: HHVV, PRF: 20 10 20 10 kHz
 Range: Delay 75m, Spacing 15m, Gates 80
 Ave. Pulses: 108, Rng/Prof Aspect@90m/s: 4.6

	Min	Max	Mean	Std	Varc%
hhN(dB)	-67.20	-64.30	-65.66	-76.24	8.7
vvN(dB)	-66.21	-63.20	-64.79	-74.99	9.6
hhL(dB)	-19.61	-10.82	-15.46	-21.87	22.8
vvL(dB)	-22.78	-14.50	-16.89	-24.12	18.9
ppN(m/s)	-12.45	12.89	0.07	4.21	
ppT(m/s)	-98.39	101.81	0.57	33.22	
hh/vv(dB)	-NaN	62.67	-NaN	44.29	-107
vh/hh(dB)	-NaN	-26.50	-35.41	-35.05	108.
hv/vv(dB)	-NaN	-21.29	-46.15	-42.59	226.
hnjmp(dB)	-2.09	2.30	0.17	-8.92	12.3
vnjmp(dB)	-1.77	1.75	0.15	-8.93	12.3