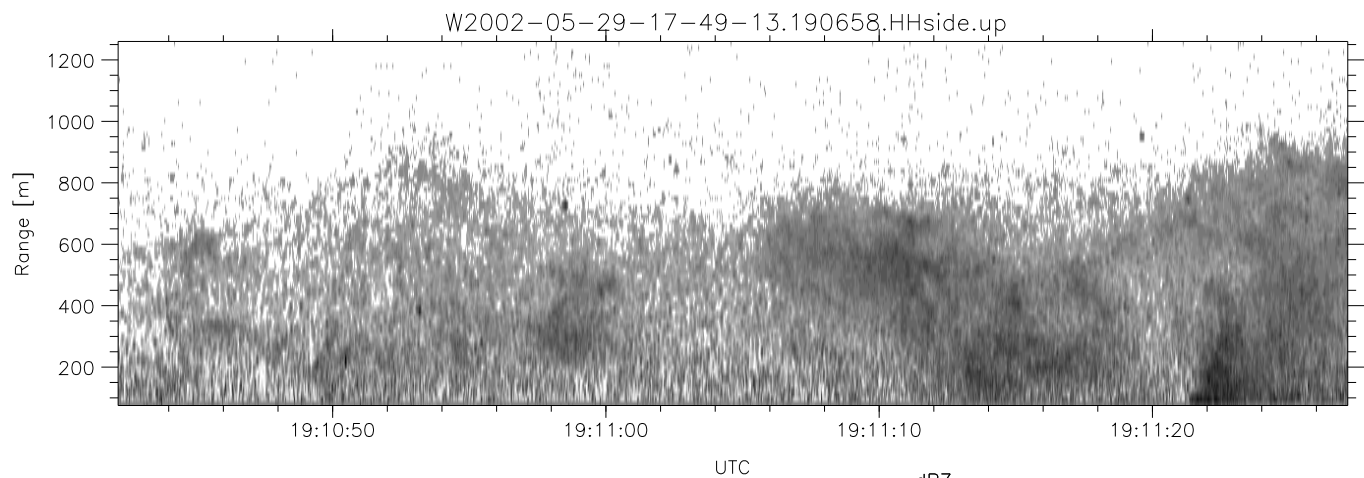
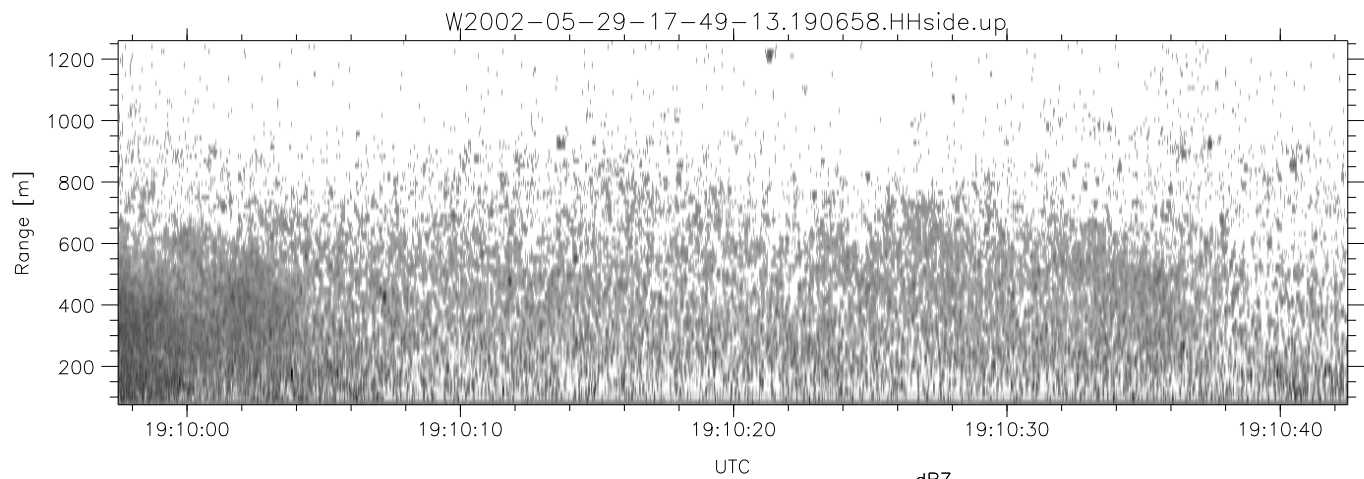
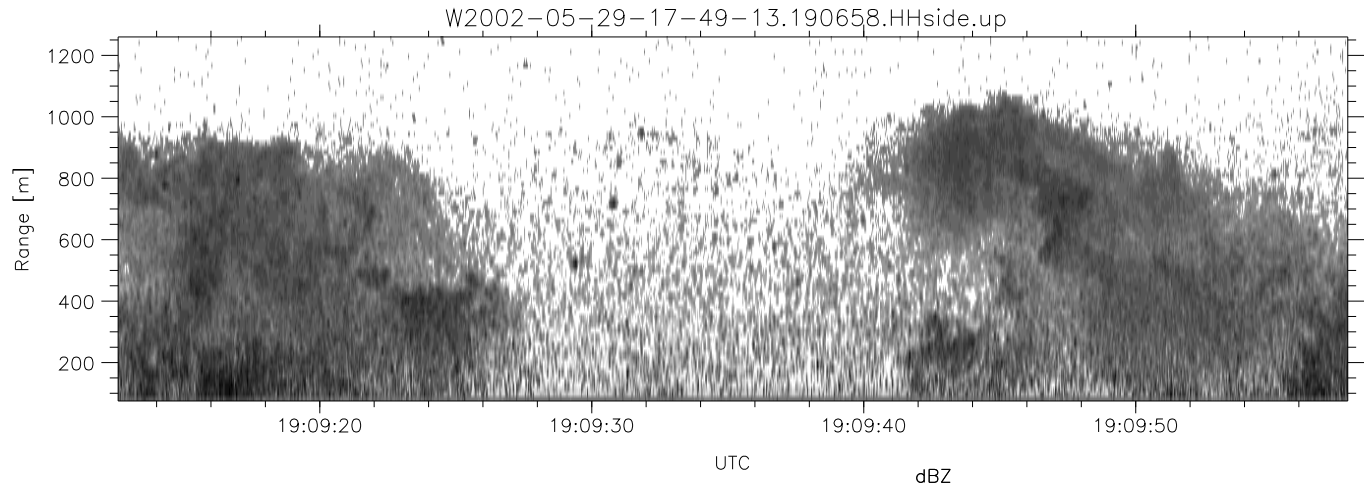


IHOP 2002 (dual-antenna config, modes 1,3,4,7) Data (cal: 49.0,50.0)

W2002-05-29-17-49-13 - PPMAG4
 IRIG:1,UTC: 17:48:55.12 to 19:39:20.99, Dur: 6625s
 TimeLngth: 6625.87s, TimeInt: 35ms (27.8pps)
 TimeCor=-13.0s, DSPDif(mn,mx,min):35,35,233
 PPS(min,max,std): 22,29,1.18
 Prof: 30081 to 214206, NumProf(t/r): 184125/10844
 ProcTime/Recs: 19:06:58-19:13:29/130128-140971
 MxACQtime: 43ms; DRate: 125.2KB/s; Flags: 0, 0, 0
 Pulse: 275ns, IFfilt: 5.0MHz; ppPol: HH HV VV
 TxPol: HHVV, PRF: 20 10 20 10 kHz
 Range: Delay 75m, Spacing 15m, Gates 80
 Ave. Pulses: 108, Rng/Prof Aspect@90m/s: 4.6

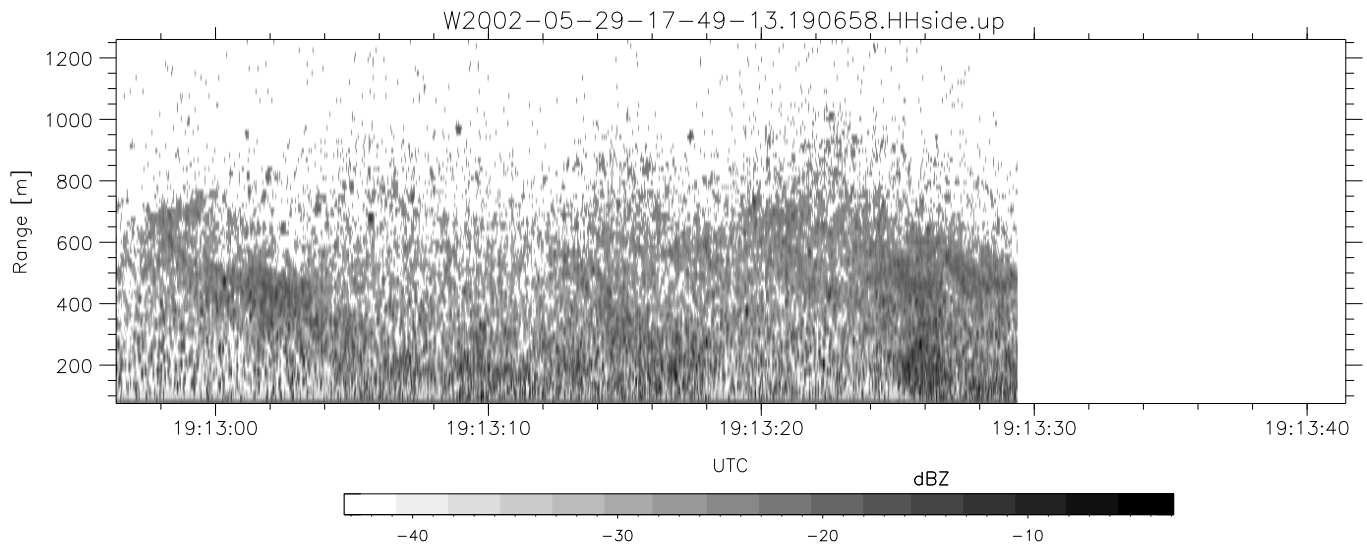
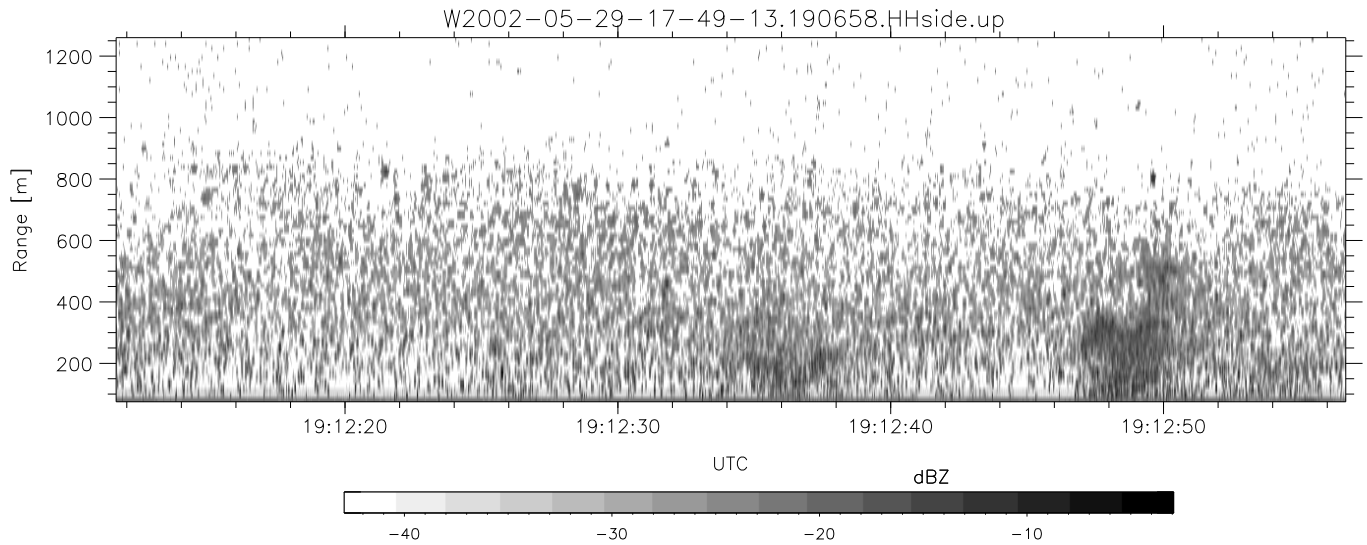
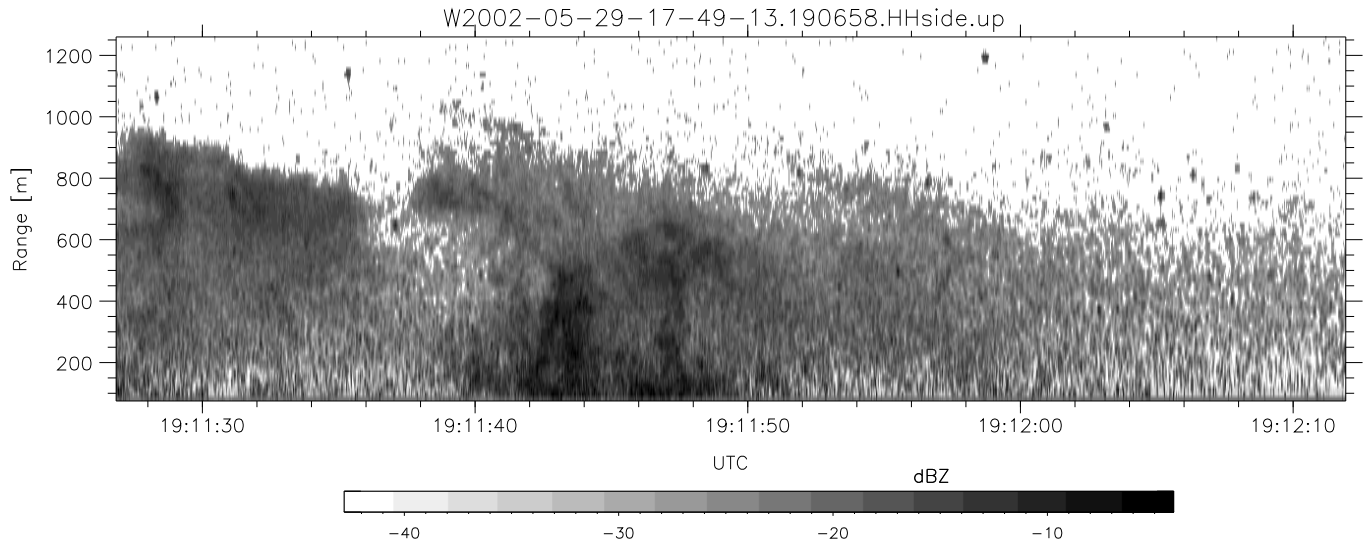
	Min	Max	Mean	Std	Varc%
hhN(dB)	-67.19	-64.17	-65.67	-76.30	8.6
vvN(dB)	-66.81	-63.56	-65.08	-74.81	10.6
hhL(dB)	-19.66	-9.93	-15.65	-21.77	24.4
vvL(dB)	-21.57	-13.89	-16.84	-22.39	27.9
ppN(m/s)	-12.21	12.36	-0.10	4.18	
ppT(m/s)	-96.44	97.62	-0.79	33.03	
hh/vv(dB)	-NaN	60.71	-NaN	45.02	-868
vh/hh(dB)	-NaN	3.32	-12.75	-6.96	379.
hv/vv(dB)	-NaN	-9.50	-27.49	-22.63	306.
hh/vv(dB)	-2.31	1.95	0.15	-9.02	12.1
vv/vv(dB)	-1.58	2.08	0.15	-8.90	12.5



IHOP 2002 (dual-antenna config, modes 1,3,4,7) Data (cal: 49.0,50.0)

W2002-05-29-17-49-13 - PPMAG4
 IRIG:1,UTC: 17:48:55.12 to 19:39:20.99, Dur: 6625s
 TimeLngth: 6625.87s, TimeInt: 35ms (27.8pps)
 TimeCor=-13.0s, DSPDif(mn,mx,min):35,35,233
 PPS(min,max,std): 22,29,1.18
 Prof: 30081 to 214206, NumProf(t/r): 184125/10844
 ProcTime/Recs: 19:06:58-19:13:29/130128-140971
 MxACQtime: 43ms; DRate: 125.2KB/s; Flags: 0, 0, 0
 Pulse: 275ns, IFfilt: 5.0MHz; ppPol: HH HV VV
 TxPol: HHVV, PRF: 20 10 20 10 kHz
 Range: Delay 75m, Spacing 15m, Gates 80
 Ave. Pulses: 108, Rng/Prof Aspect@90m/s: 4.6

	Min	Max	Mean	Std	Varc%
hhN(dB)	-67.19	-64.17	-65.67	-76.30	8.6
vvN(dB)	-66.81	-63.56	-65.08	-74.81	10.6
hhL(dB)	-19.66	-9.93	-15.65	-21.77	24.4
vvL(dB)	-21.57	-13.89	-16.84	-22.39	27.9
ppN(m/s)	-12.21	12.36	-0.10	4.18	
ppT(m/s)	-96.44	97.62	-0.79	33.03	
hh/vv(dB)	-NaN	60.71	-NaN	45.02	-868
vh/hh(dB)	-NaN	3.32	-12.75	-6.96	379.
hv/vv(dB)	-NaN	-9.50	-27.49	-22.63	306.
hnjmp(dB)	-2.31	1.95	0.15	-9.02	12.1
vnjmp(dB)	-1.58	2.08	0.15	-8.90	12.5



IHOP 2002 (dual-antenna config, modes 1,3,4,7) Data (cal: 49.0,50.0)

W2002-05-29-17-49-13 - PPMAG4
 IRIG:1,UTC: 17:48:55.12 to 19:39:20.99, Dur: 6625s
 TimeLngth: 6625.87s, TimeInt: 35ms (27.8pps)
 TimeCor=-13.0s, DSPDif(mn,mx,min):35,35,233
 PPS(min,max,std): 22,29,1.18
 Prof: 30081 to 214206, NumProf(t/r): 184125/10844
 ProcTime/Recs: 19:06:58-19:13:29/130128-140971
 MxACQtime: 43ms; DRate: 125.2KB/s; Flags: 0, 0, 0
 Pulse: 275ns, IFfilt: 5.0MHz; ppPol: HH HV VV
 TxPol: HHVV, PRF: 20 10 20 10 kHz
 Range: Delay 75m, Spacing 15m, Gates 80
 Ave. Pulses: 108, Rng/Prof Aspect@90m/s: 4.6

	Min	Max	Mean	Std	Varc%
hhN(dB)	-67.19	-64.17	-65.67	-76.30	8.6
vvN(dB)	-66.81	-63.56	-65.08	-74.81	10.6
hhL(dB)	-19.66	-9.93	-15.65	-21.77	24.4
vvL(dB)	-21.57	-13.89	-16.84	-22.39	27.9
ppN(m/s)	-12.21	12.36	-0.10	4.18	
ppT(m/s)	-96.44	97.62	-0.79	33.03	
hh/vv(dB)	-NaN	60.71	-NaN	45.02	-868
vh/hh(dB)	-NaN	3.32	-12.75	-6.96	379.
hv/vv(dB)	-NaN	-9.50	-27.49	-22.63	306.
hnjmp(dB)	-2.31	1.95	0.15	-9.02	12.1
vnjmp(dB)	-1.58	2.08	0.15	-8.90	12.5