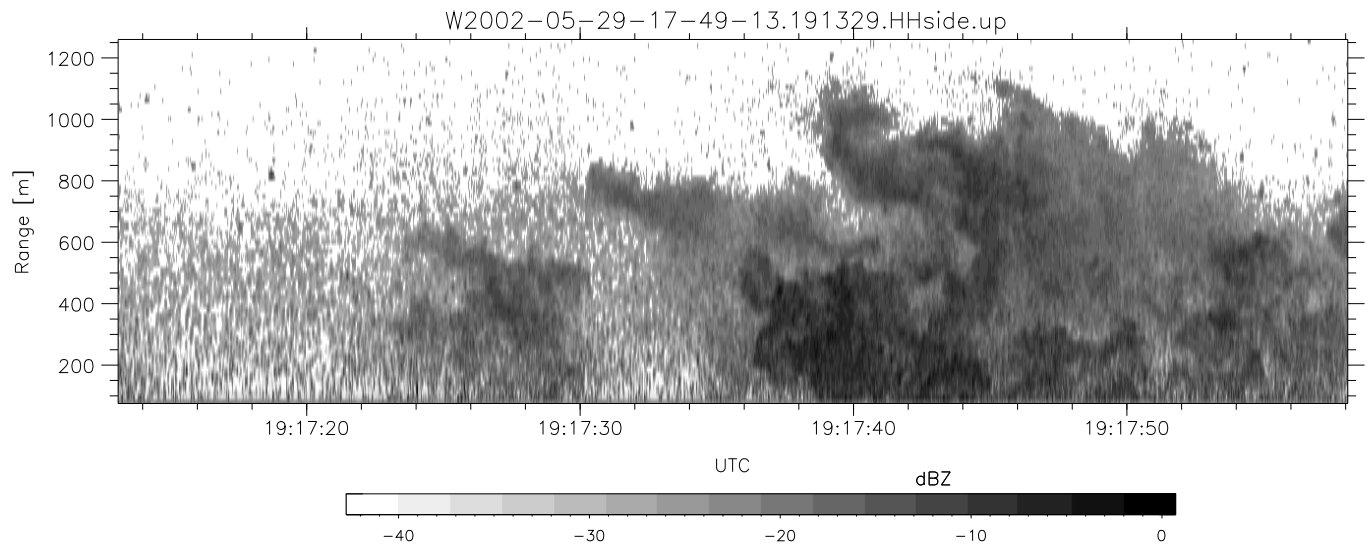
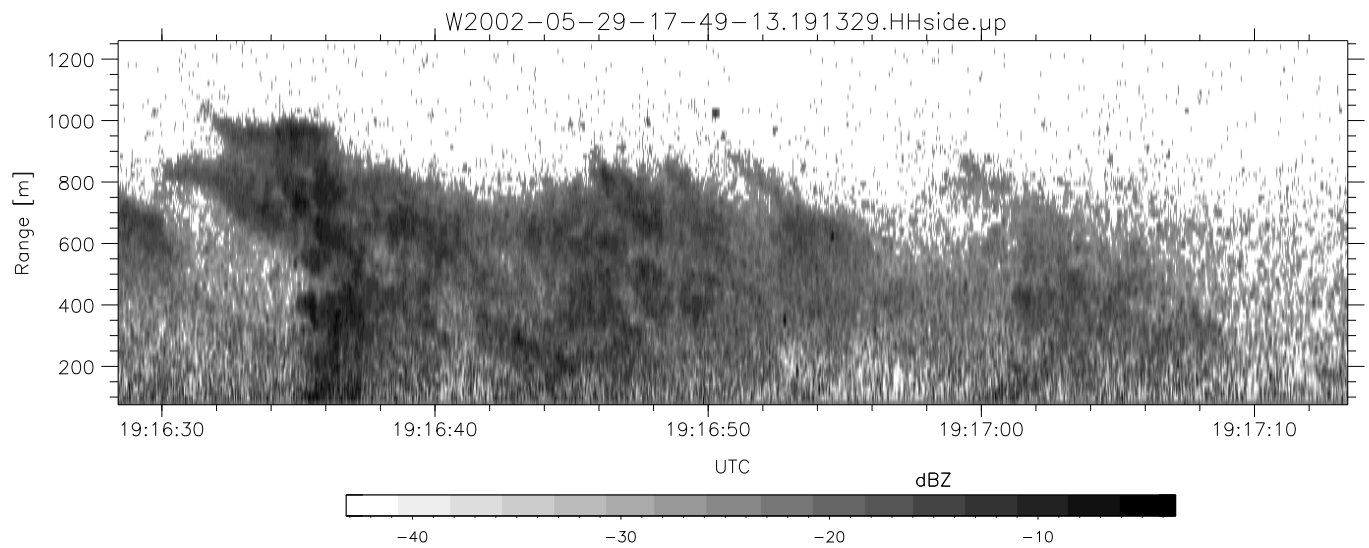
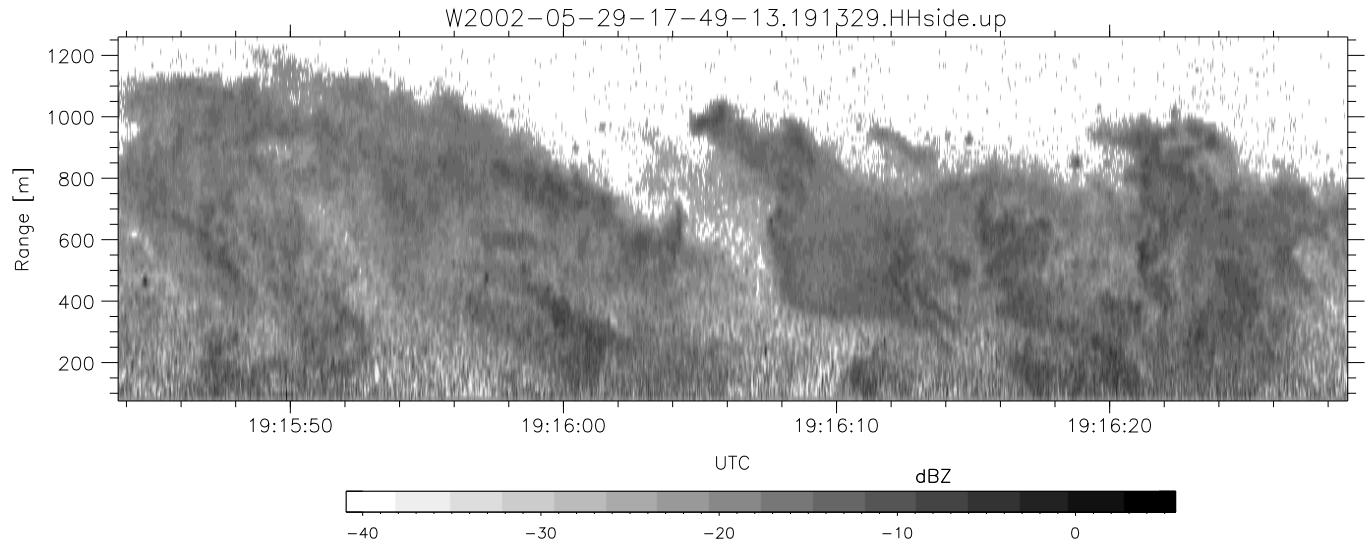


IHOP 2002 (dual-antenna config, modes 1,3,4,7) Data (cal: 49.0,50.0)

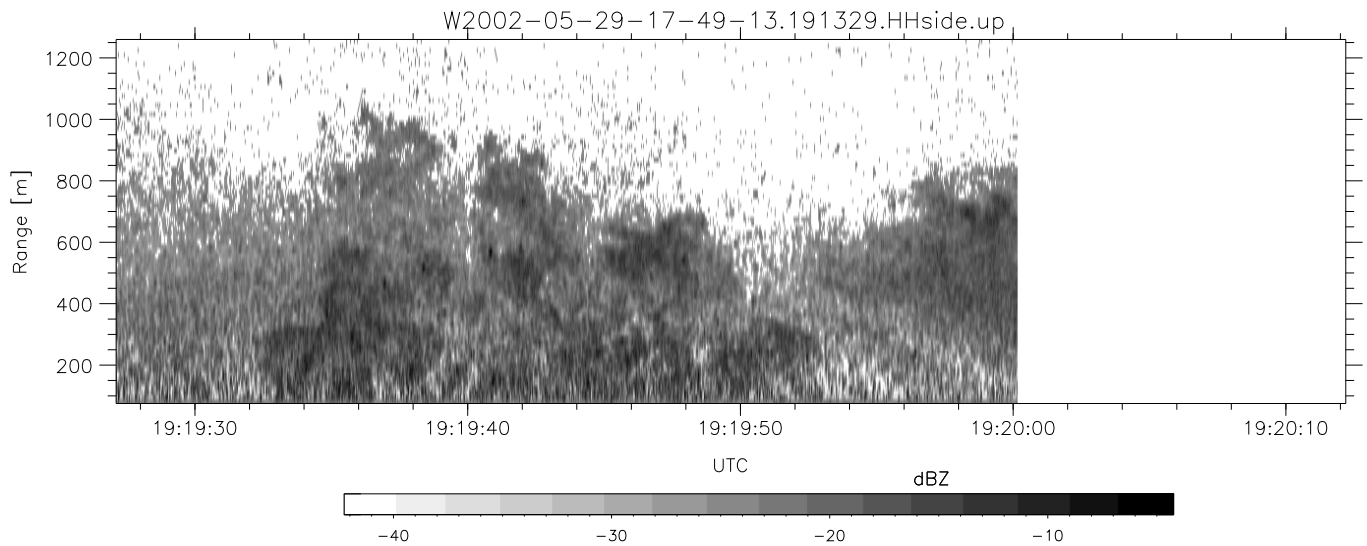
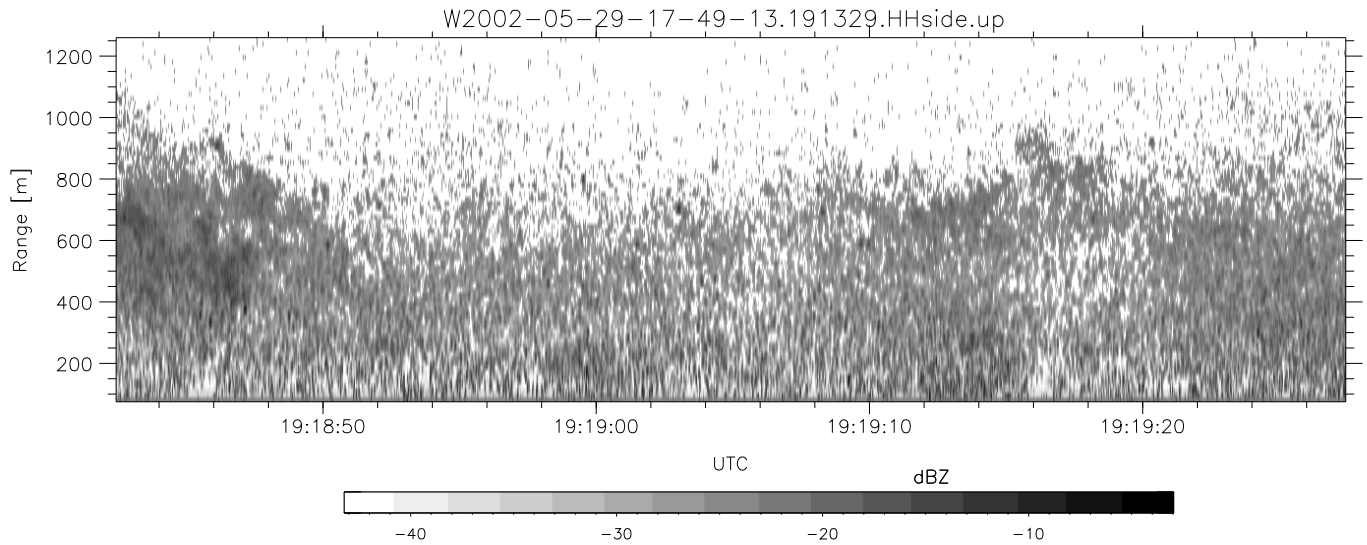
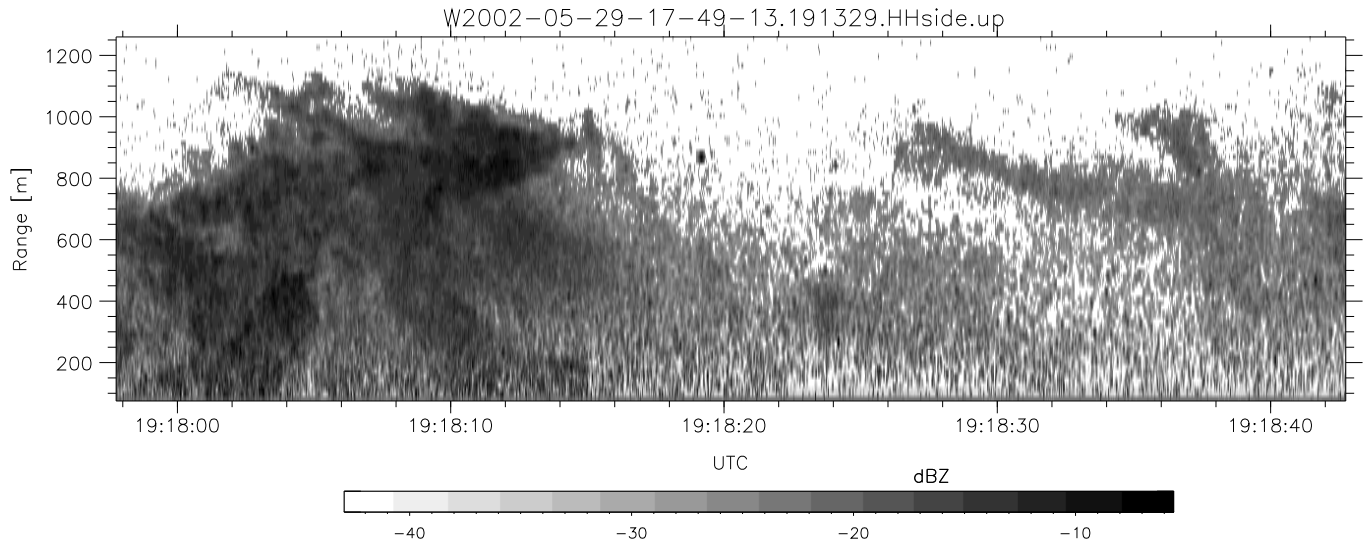
	Min	Max	Mean	Std	Varc%
W2002-05-29-17-49-13 - PPMAG4					
IRIG:1,UTC: 17:48:55.12 to 19:39:20.99, Dur: 6625s	hhN (dB)	-67.21 -64.47	-65.68	-76.35	8.6
TimeLngth: 6625.87s, TimeInt: 35ms (27.8pps)	vvN (dB)	-66.84 -64.07	-65.31	-75.92	8.7
TimeCor=-13.0s, DSPDif(mn,mx,min):35,35,174	hhL (dB)	-19.93 -10.47	-16.40	-21.93	28.0
PPS(min,max,std): 23,29,1.18	vvL (dB)	-25.70 -15.61	-17.83	-24.92	19.6
Prof: 30081 to 214206, NumProf(t/r): 184125/10844	ppN (m/s)	-12.27 11.86	-0.06	4.13	
ProcTime/Recs: 19:13:29-19:20:00/140972-151815	ppT (m/s)	-96.96 93.67	-0.44	32.65	
MxAcQtime: 43ms; DRate: 125.2KB/s; Flags: 0, 0, 0	hh/vv (dB)	-NaN 66.64	22.32	43.31	1255
Pulse: 275ns, IFfilt: 5.0MHz; ppPol: HH HV VV	vh/hh (dB)	-NaN -5.93	-26.58	-19.21	545.
TxPol: HHVV, PRF: 20 10 20 10 kHz	hv/vv (dB)	-47.08 -7.11	-27.01	-21.95	320.
Range: Delay 75m, Spacing 15m, Gates 80	hn_jmp (dB)	-1.73 2.16	0.15	-9.06	12.0
Ave. Pulses: 108, Rng/Prof Aspect@90m/s: 4.6	vn_jmp (dB)	-1.88 2.25	0.13	-8.95	12.3



IHOP 2002 (dual-antenna config, modes 1,3,4,7) Data (cal: 49.0,50.0)

W2002-05-29-17-49-13 - PPMAG4
 IRIG:1,UTC: 17:48:55.12 to 19:39:20.99, Dur: 6625s
 TimeLngth: 6625.87s, TimeInt: 35ms (27.8pps)
 TimeCor=-13.0s, DSPDif(mn,mx,min):35,35,174
 PPS(min,max,std): 23,29,1.18
 Prof: 30081 to 214206, NumProf(t/r): 184125/10844
 ProcTime/Recs: 19:13:29-19:20:00/140972-151815
 MxACQtime: 43ms; DRate: 125.2KB/s; Flags: 0, 0, 0
 Pulse: 275ns, IFfilt: 5.0MHz; ppPol: HH HV VV
 TxPol: HHVV, PRF: 20 10 20 10 kHz
 Range: Delay 75m, Spacing 15m, Gates 80
 Ave. Pulses: 108, Rng/Prof Aspect@90m/s: 4.6

	Min	Max	Mean	Std	Varc%
hhN (dB)	-67.21	-64.47	-65.68	-76.35	8.6
vvN (dB)	-66.84	-64.07	-65.31	-75.92	8.7
hhL (dB)	-19.93	-10.47	-16.40	-21.93	28.0
vvL (dB)	-25.70	-15.61	-17.83	-24.92	19.6
ppN (m/s)	-12.27	11.86	-0.06	4.13	
ppT (m/s)	-96.96	93.67	-0.44	32.65	
hh/vv (dB)	-NaN	66.64	22.32	43.31	1255
vh/hh (dB)	-NaN	-5.93	-26.58	-19.21	545.
hv/vv (dB)	-47.08	-7.11	-27.01	-21.95	320.
hnjmp (dB)	-1.73	2.16	0.15	-9.06	12.0
vnjmp (dB)	-1.88	2.25	0.13	-8.95	12.3



IHOP 2002 (dual-antenna config, modes 1,3,4,7) Data (cal: 49.0,50.0)

W2002-05-29-17-49-13 - PPMAG4	Min	Max	Mean	Std	Varc%	
IRIG:1,UTC: 17:48:55.12 to 19:39:20.99, Dur: 6625s	hhN (dB)	-67.21	-64.47	-65.68	-76.35	8.6
TimeLngth: 6625.87s, TimeInt: 35ms (27.8pps)	vvN (dB)	-66.84	-64.07	-65.31	-75.92	8.7
TimeCor=-13.0s, DSPDif(mn,mx,min):35,35,174	hhL (dB)	-19.93	-10.47	-16.40	-21.93	28.0
PPS(min,max,std): 23,29,1.18	vvL (dB)	-25.70	-15.61	-17.83	-24.92	19.6
Prof: 30081 to 214206, NumProf(t/r): 184125/10844	ppN (m/s)	-12.27	11.86	-0.06	4.13	
ProcTime/Recs: 19:13:29-19:20:00/140972-151815	ppT (m/s)	-96.96	93.67	-0.44	32.65	
MxACQtime: 43ms; DRate: 125.2KB/s; Flags: 0, 0, 0	hh/vv (dB)	-NaN	66.64	22.32	43.31	1255
Pulse: 275ns, IFfilt: 5.0MHz; ppPol: HH HV VV	vh/hh (dB)	-NaN	-5.93	-26.58	-19.21	545.
TxPol: HHVV, PRF: 20 10 20 10 kHz	hv/vv (dB)	-47.08	-7.11	-27.01	-21.95	320.
Range: Delay 75m, Spacing 15m, Gates 80	hn/jmp (dB)	-1.73	2.16	0.15	-9.06	12.0
Ave. Pulses: 108, Rng/Prof Aspect@90m/s: 4.6	vn/jmp (dB)	-1.88	2.25	0.13	-8.95	12.3