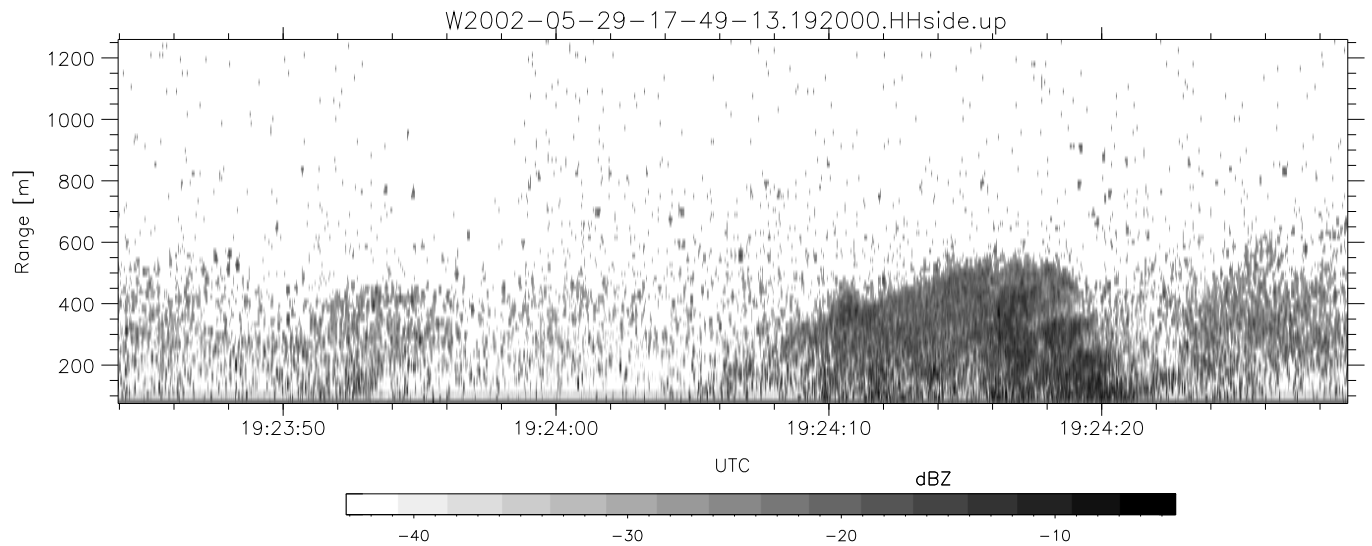
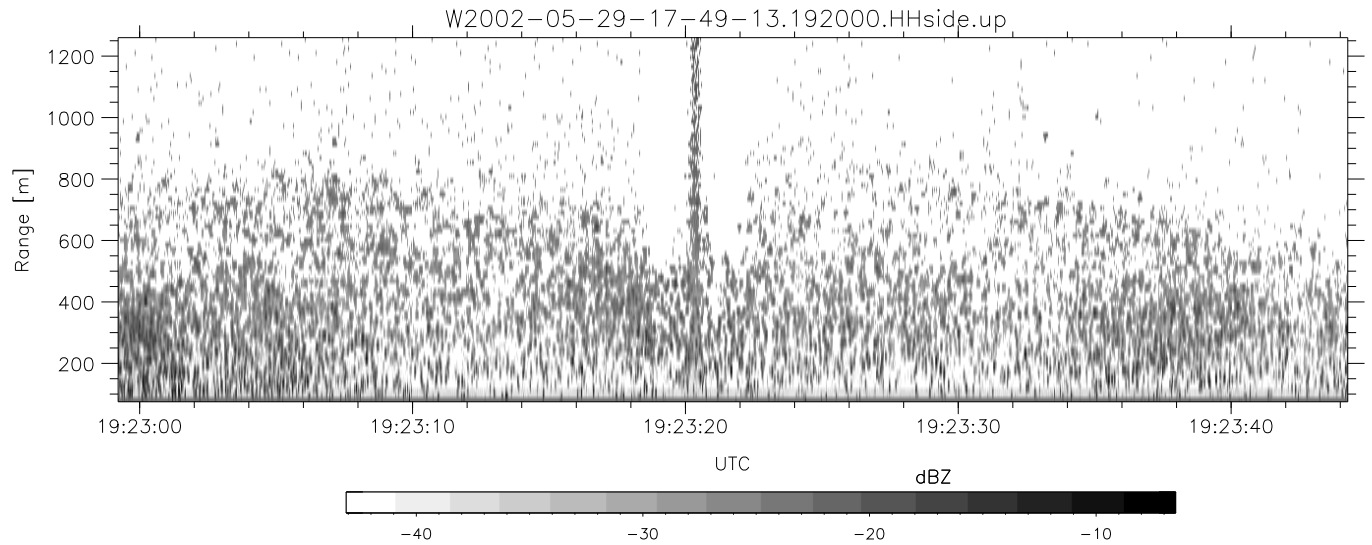
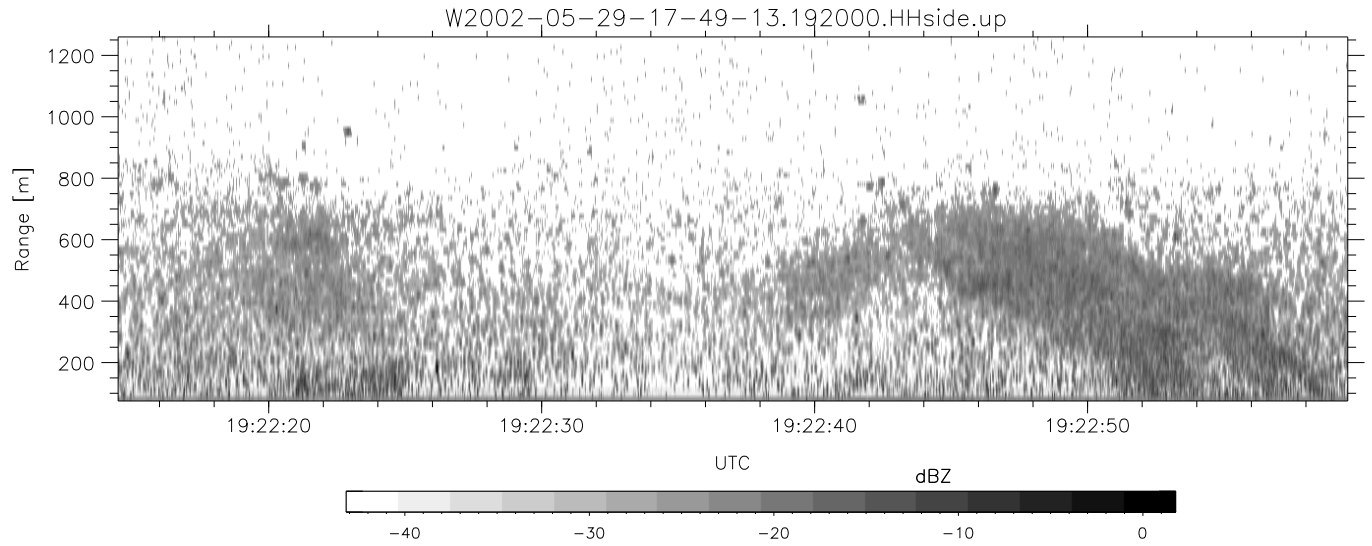


IHOP 2002 (dual-antenna config, modes 1,3,4,7) Data (cal: 49.0,50.0)

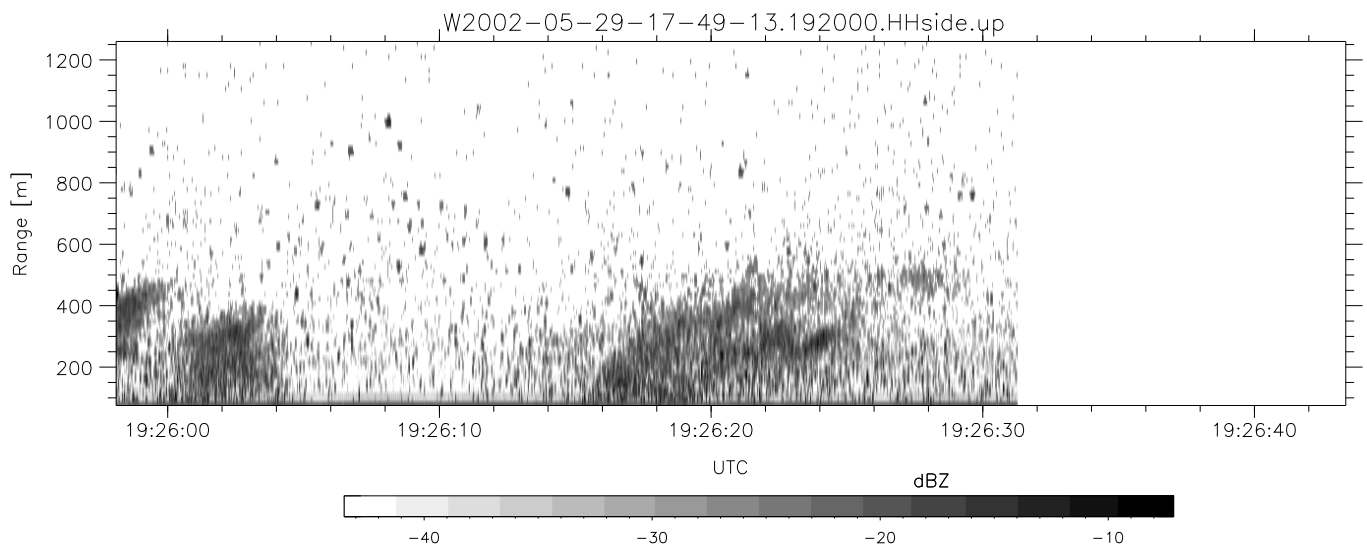
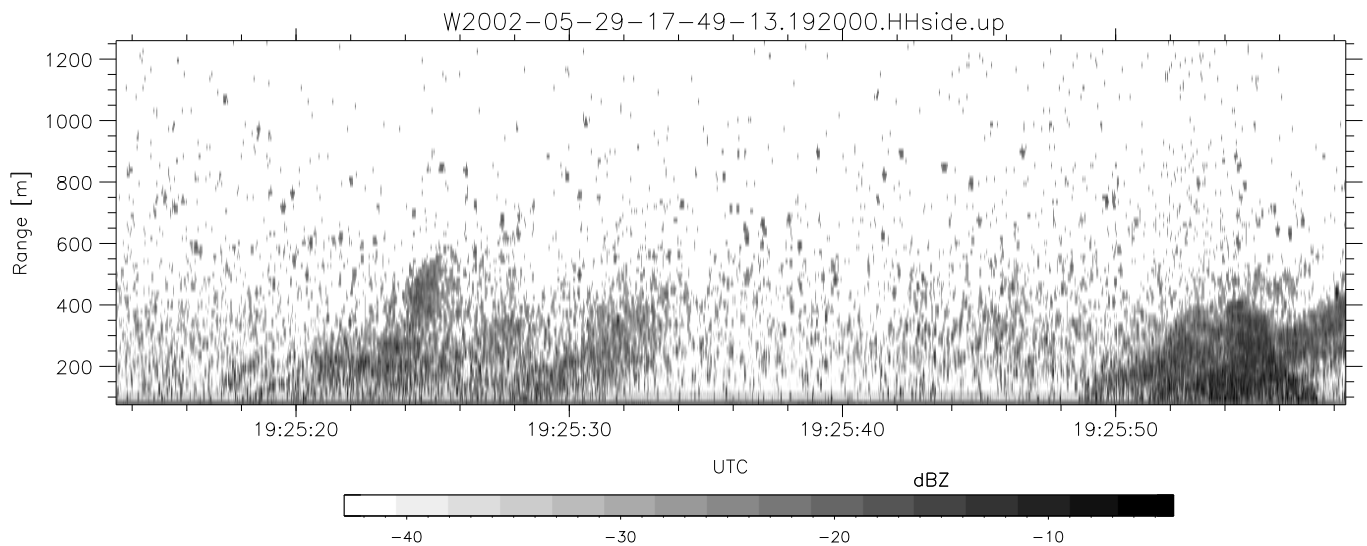
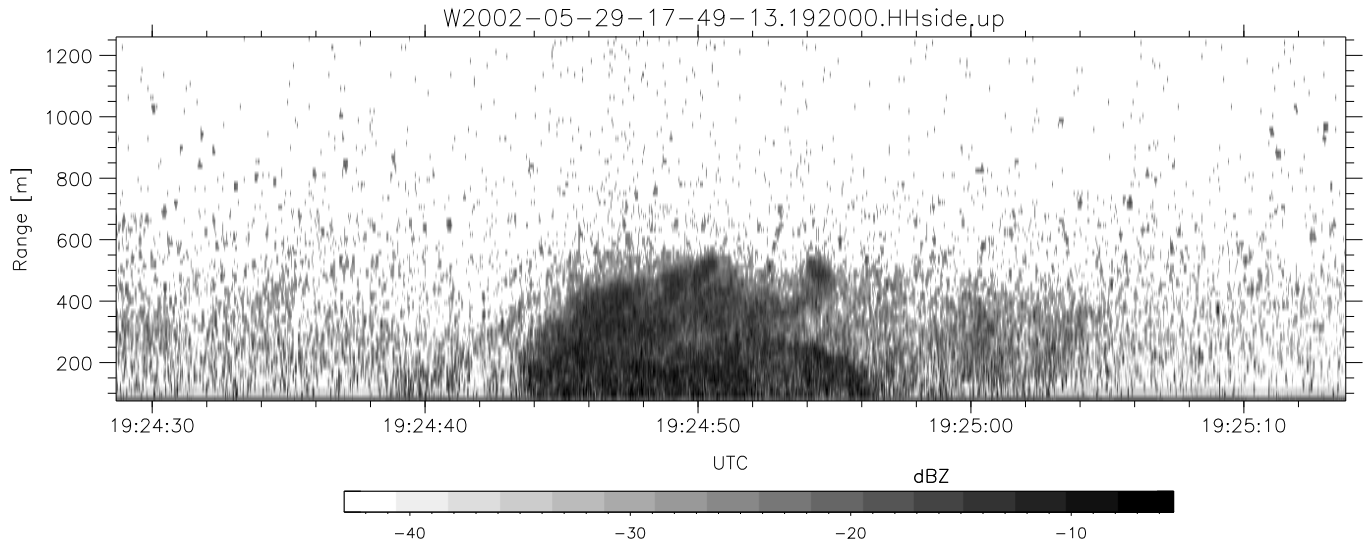
W2002-05-29-17-49-13 - PPMAG4	Min	Max	Mean	Std	Varc%	
IRIG:1,UTC: 17:48:55.12 to 19:39:20.99, Dur: 6625s	hhN(dB)	-67.48	-63.93	-65.71	-76.27	8.8
TimeLngth: 6625.87s, TimeInt: 35ms (27.8pps)	vvN(dB)	-66.76	-63.62	-65.29	-75.83	8.8
TimeCor=-13.0s, DSPDif(mn,mx,min):35,35,181	hhL(dB)	-19.74	-11.37	-16.00	-21.12	30.8
PPS(min,max,std): 23,29,1.20	vvL(dB)	-23.59	-15.35	-17.54	-24.02	22.5
Prof: 30081 to 214206, NumProf(t/r): 184125/10844	ppN(m/s)	-12.81	12.21	-0.03	4.18	
ProcTime/Recs: 19:20:00-19:26:31/151816-162659	ppT(m/s)	-101.2	96.43	-0.23	33.03	
MxAcQtime: 43ms; DRate: 125.2KB/s; Flags: 0, 0, 0	hh/vv(dB)	-NaN	63.11	10.69	41.59	1231
Pulse: 275ns, IFilt: 5.0MHz; ppPol: HH HV VV	vh/hh(dB)	-NaN	-7.19	-27.77	-19.19	720.
TxPol: HHVV, PRF: 20 10 20 10 kHz	hv/vv(dB)	-NaN	-18.23	-39.06	-34.18	307.
Range: Delay 75m, Spacing 15m, Gates 80	hn_jmp(dB)	-1.89	2.20	0.15	-9.00	12.2
Ave. Pulses: 108, Rng/Prof Aspect@90m/s: 4.6	vn_jmp(dB)	-1.84	2.26	0.15	-8.93	12.4



IHOP 2002 (dual-antenna config, modes 1,3,4,7) Data (cal: 49.0,50.0)

W2002-05-29-17-49-13 - PPMAG4
 IRIG:1,UTC: 17:48:55.12 to 19:39:20.99, Dur: 6625s
 TimeLngth: 6625.87s, TimeInt: 35ms (27.8pps)
 TimeCor=-13.0s, DSPDif(mn,mx,min):35,35,181
 PPS(min,max,std): 23,29,1.20
 Prof: 30081 to 214206, NumProf(t/r): 184125/10844
 ProcTime/Recs: 19:20:00-19:26:31/151816-162659
 MxAcQtime: 43ms; DRate: 125.2KB/s; Flags: 0, 0, 0
 Pulse: 275ns, IFfilt: 5.0MHz; ppPol: HH HV VV
 TxPol: HHVV, PRF: 20 10 20 10 kHz
 Range: Delay 75m, Spacing 15m, Gates 80
 Ave. Pulses: 108, Rng/Prof Aspect@90m/s: 4.6

	Min	Max	Mean	Std	Varc%
hhN(dB)	-67.48	-63.93	-65.71	-76.27	8.8
vvN(dB)	-66.76	-63.62	-65.29	-75.83	8.8
hhL(dB)	-19.74	-11.37	-16.00	-21.12	30.8
vvL(dB)	-23.59	-15.35	-17.54	-24.02	22.5
ppN(m/s)	-12.81	12.21	-0.03	4.18	
ppT(m/s)	-101.2	96.43	-0.23	33.03	
hh/vv(dB)	-NaN	63.11	10.69	41.59	1231
vh/hh(dB)	-NaN	-7.19	-27.77	-19.19	720.
hv/vv(dB)	-NaN	-18.23	-39.06	-34.18	307.
hnjmp(dB)	-1.89	2.20	0.15	-9.00	12.2
vnjmp(dB)	-1.84	2.26	0.15	-8.93	12.4



IHOP 2002 (dual-antenna config, modes 1,3,4,7) Data (cal: 49.0,50.0)

W2002-05-29-17-49-13 - PPMAG4
 IRIG:1,UTC: 17:48:55.12 to 19:39:20.99, Dur: 6625s
 TimeLngth: 6625.87s, TimeInt: 35ms (27.8pps)
 TimeCor=-13.0s, DSPDif(mn,mx,min):35,35,181
 PPS(min,max,std): 23,29,1.20
 Prof: 30081 to 214206, NumProf(t/r): 184125/10844
 ProcTime/Recs: 19:20:00-19:26:31/151816-162659
 MxACQtime: 43ms; DRate: 125.2KB/s; Flags: 0, 0, 0
 Pulse: 275ns, IFfilt: 5.0MHz; ppPol: HH HV VV
 TxPol: HHVV, PRF: 20 10 20 10 kHz
 Range: Delay 75m, Spacing 15m, Gates 80
 Ave. Pulses: 108, Rng/Prof Aspect@90m/s: 4.6

	Min	Max	Mean	Std	Varc%
hhN (dB)	-67.48	-63.93	-65.71	-76.27	8.8
vvN (dB)	-66.76	-63.62	-65.29	-75.83	8.8
hhL (dB)	-19.74	-11.37	-16.00	-21.12	30.8
vvL (dB)	-23.59	-15.35	-17.54	-24.02	22.5
ppN (m/s)	-12.81	12.21	-0.03	4.18	
ppT (m/s)	-101.2	96.43	-0.23	33.03	
hh/vv (dB)	-NaN	63.11	10.69	41.59	1231
vh/hh (dB)	-NaN	-7.19	-27.77	-19.19	720.
hv/vv (dB)	-NaN	-18.23	-39.06	-34.18	307.
hh_jmp (dB)	-1.89	2.20	0.15	-9.00	12.2
vv_jmp (dB)	-1.84	2.26	0.15	-8.93	12.4