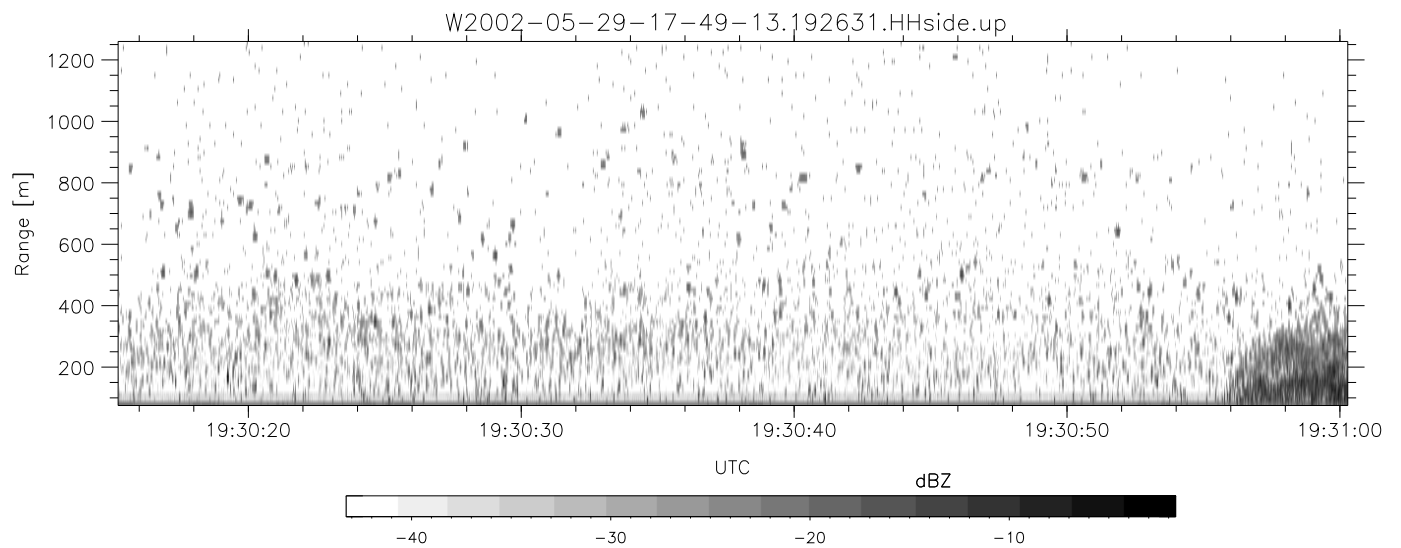
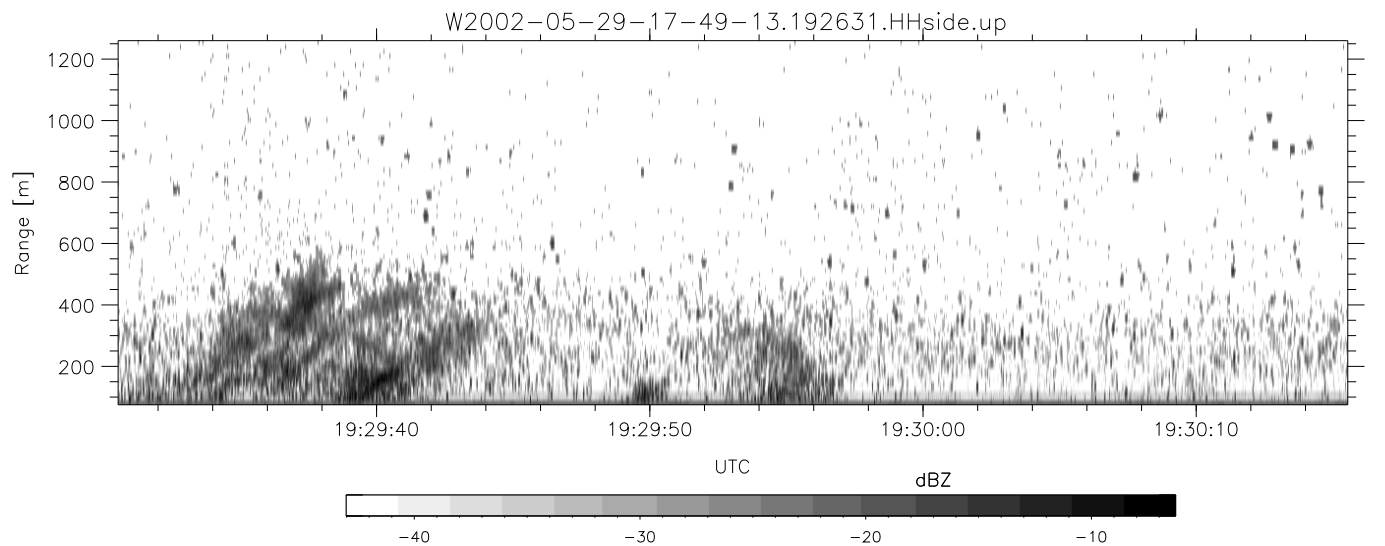
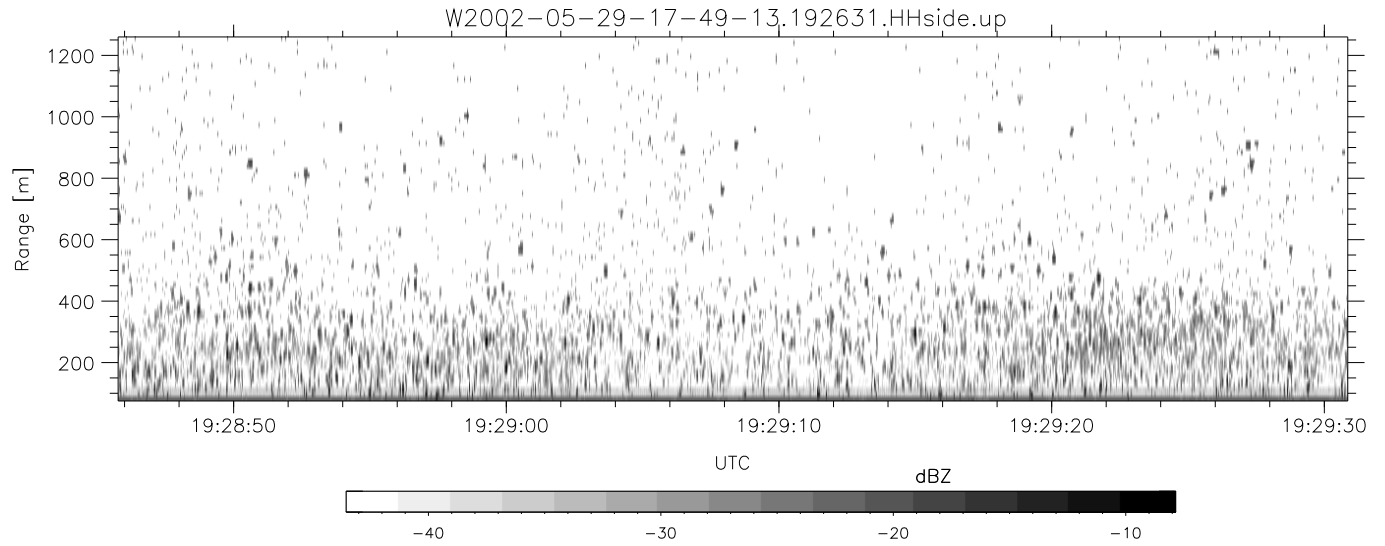


IHOP 2002 (dual-antenna config, modes 1,3,4,7) Data (cal: 49.0,50.0)

W2002-05-29-17-49-13 - PPMAG4
 IRIG:1,UTC: 17:48:55.12 to 19:39:20.99, Dur: 6625s
 TimeLngth: 6625.87s, TimeInt: 35ms (27.8pps)
 TimeCor=-13.0s, DSPDif(mn,mx,min):36,35,265
 PPS(min,max,std): 22,29,1.27
 Prof: 30081 to 214206, NumProf(t/r): 184125/10844
 ProcTime/Recs: 19:26:31-19:33:02/162660-173503
 MxACQtime: 43ms; DRate: 125.2KB/s; Flags: 0, 0, 0
 Pulse: 275ns, IFfilt: 5.0MHz; ppPol: HH HV VV
 TxPol: HHVV, PRF: 20 10 20 10 kHz
 Range: Delay 75m, Spacing 15m, Gates 80
 Ave. Pulses: 108, Rng/Prof Aspect@90m/s: 4.6

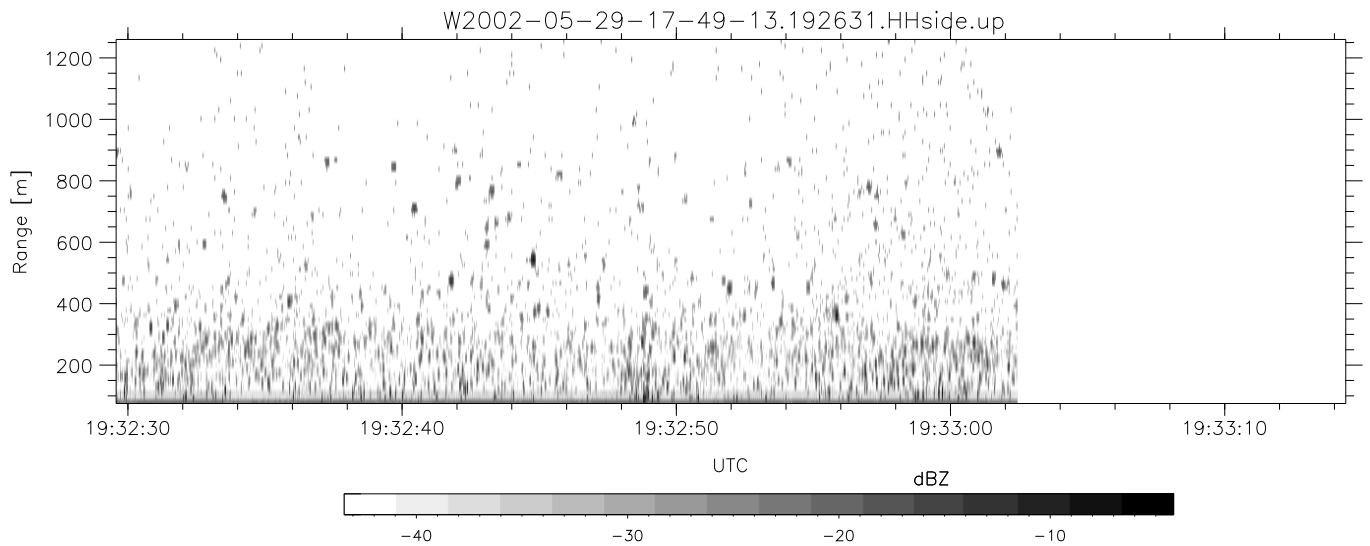
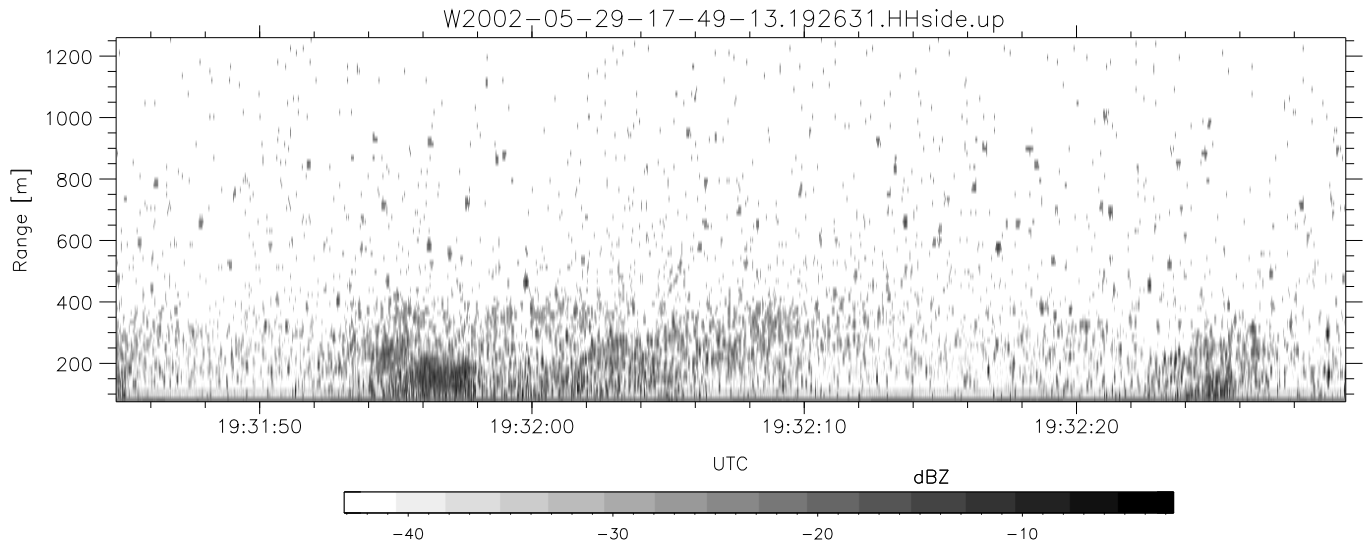
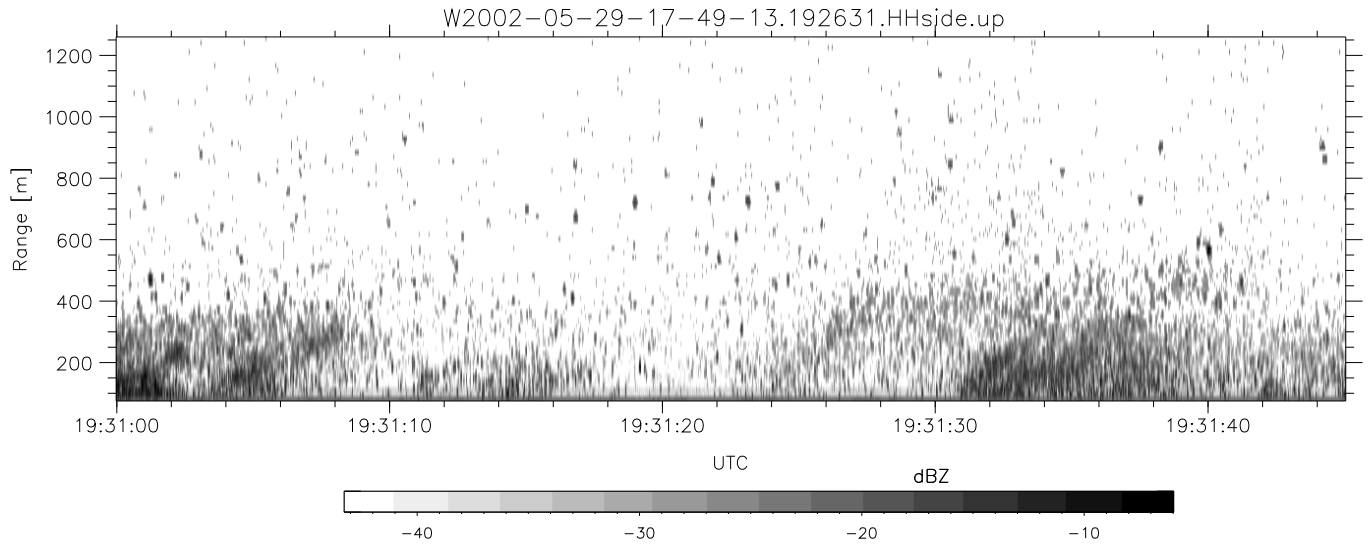
	Min	Max	Mean	Std	Varc%
hhN(dB)	-67.53	-64.37	-65.74	-76.35	8.7
vvN(dB)	-66.99	-63.84	-65.28	-75.80	8.9
hhL(dB)	-20.23	-12.25	-16.41	-21.80	28.9
vvL(dB)	-26.23	-16.49	-18.92	-24.92	25.1
ppN(m/s)	-12.45	12.13	0.08	4.18	
ppT(m/s)	-98.35	95.80	0.66	33.04	
hh/vv(dB)	-NaN	55.16	15.54	37.34	1514
vh/hh(dB)	-NaN	-29.53	-35.70	-36.15	90.2
hv/vv(dB)	-NaN	-33.95	-47.02	-46.14	122.
hh/jmp(dB)	-1.68	2.26	0.15	-8.96	12.3
vv/jmp(dB)	-1.86	2.37	0.15	-8.88	12.5



IHOP 2002 (dual-antenna config, modes 1,3,4,7) Data (cal: 49.0,50.0)

W2002-05-29-17-49-13 - PPMAG4
 IRIG:1,UTC: 17:48:55.12 to 19:39:20.99, Dur: 6625s
 TimeLngth: 6625.87s, TimeInt: 35ms (27.8pps)
 TimeCor=-13.0s, DSPDif(mn,mx,min):36,35,265
 PPS(min,max,std): 22,29,1.27
 Prof: 30081 to 214206, NumProf(t/r): 184125/10844
 ProcTime/Recs: 19:26:31-19:33:02/162660-173503
 MxACQtime: 43ms; DRate: 125.2KB/s; Flags: 0, 0, 0
 Pulse: 275ns, IFfilt: 5.0MHz; ppPol: HH HV VV
 TxPol: HHVV, PRF: 20 10 20 10 kHz
 Range: Delay 75m, Spacing 15m, Gates 80
 Ave. Pulses: 108, Rng/Prof Aspect@90m/s: 4.6

	Min	Max	Mean	Std	Varc%
hhN(dB)	-67.53	-64.37	-65.74	-76.35	8.7
vvN(dB)	-66.99	-63.84	-65.28	-75.80	8.9
hhL(dB)	-20.23	-12.25	-16.41	-21.80	28.9
vvL(dB)	-26.23	-16.49	-18.92	-24.92	25.1
ppN(m/s)	-12.45	12.13	0.08	4.18	
ppT(m/s)	-98.35	95.80	0.66	33.04	
hh/vv(dB)	-NaN	55.16	15.54	37.34	1514
vh/hh(dB)	-NaN	-29.53	-35.70	-36.15	90.2
hv/vv(dB)	-NaN	-33.95	-47.02	-46.14	122.
hn_jmp(dB)	-1.68	2.26	0.15	-8.96	12.3
vn_jmp(dB)	-1.86	2.37	0.15	-8.88	12.5



IHOP 2002 (dual-antenna config, modes 1,3,4,7) Data (cal: 49.0,50.0)

W2002-05-29-17-49-13 - PPMAG4
 IRIG:1,UTC: 17:48:55.12 to 19:39:20.99, Dur: 6625s
 TimeLngth: 6625.87s, TimeInt: 35ms (27.8pps)
 TimeCor=-13.0s, DSPDif(mn,mx,min):36,35,265
 PPS(min,max,std): 22,29,1.27
 Prof: 30081 to 214206, NumProf(t/r): 184125/10844
 ProcTime/Recs: 19:26:31-19:33:02/162660-173503
 MxACQtime: 43ms; DRate: 125.2KB/s; Flags: 0, 0, 0
 Pulse: 275ns, IFfilt: 5.0MHz; ppPol: HH HV VV
 TxPol: HHVV, PRF: 20 10 20 10 kHz
 Range: Delay 75m, Spacing 15m, Gates 80
 Ave. Pulses: 108, Rng/Prof Aspect@90m/s: 4.6

	Min	Max	Mean	Std	Varc%
hhN(dB)	-67.53	-64.37	-65.74	-76.35	8.7
vvN(dB)	-66.99	-63.84	-65.28	-75.80	8.9
hhL(dB)	-20.23	-12.25	-16.41	-21.80	28.9
vvL(dB)	-26.23	-16.49	-18.92	-24.92	25.1
ppN(m/s)	-12.45	12.13	0.08	4.18	
ppT(m/s)	-98.35	95.80	0.66	33.04	
hh/vv(dB)	-NaN	55.16	15.54	37.34	1514
vh/hh(dB)	-NaN	-29.53	-35.70	-36.15	90.2
hv/vv(dB)	-NaN	-33.95	-47.02	-46.14	122.
hh/vv(dB)	-1.68	2.26	0.15	-8.96	12.3
vv/vv(dB)	-1.86	2.37	0.15	-8.88	12.5