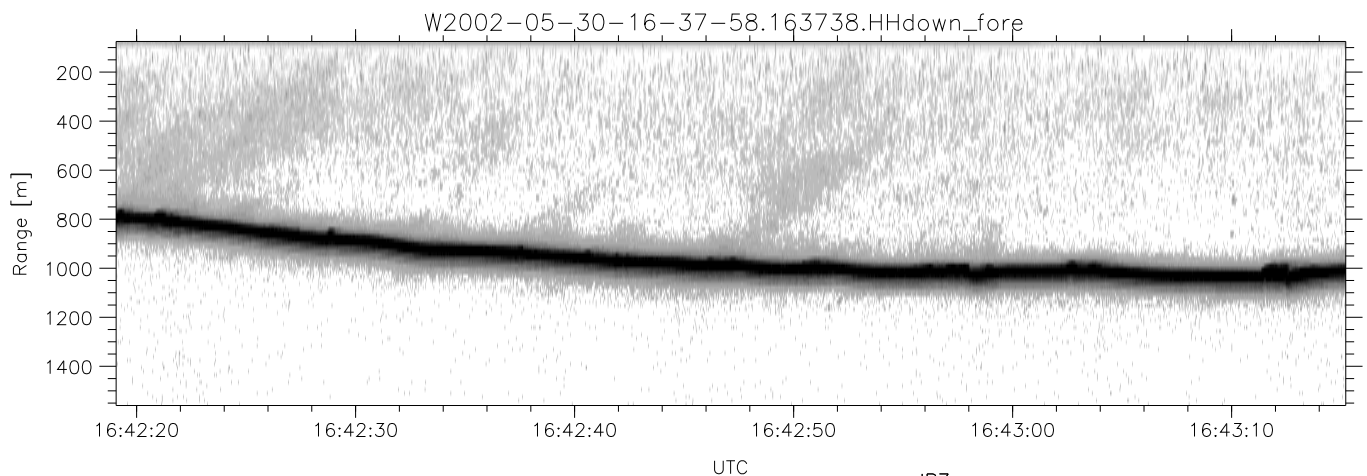
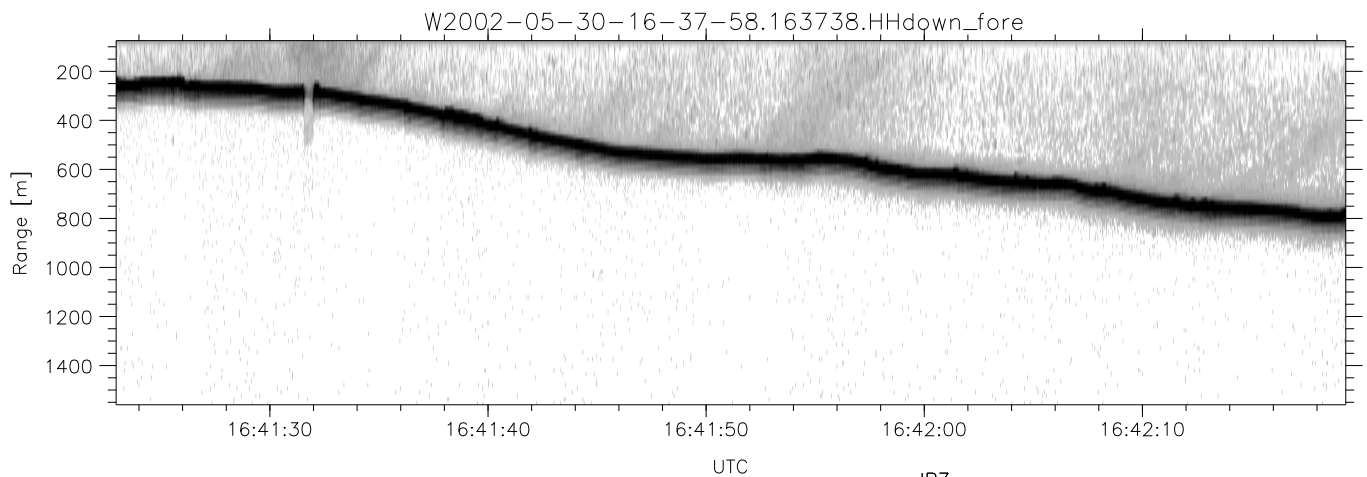
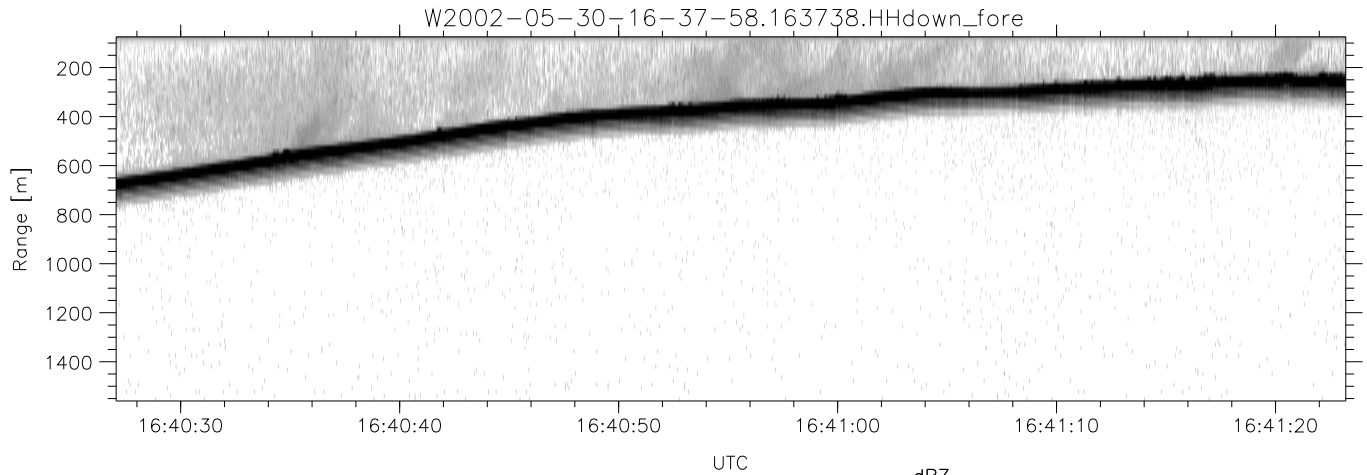


IHOP 2002 (dual-antenna config, modes 1,3,4,7) Data (cal: 55.0,50.0)

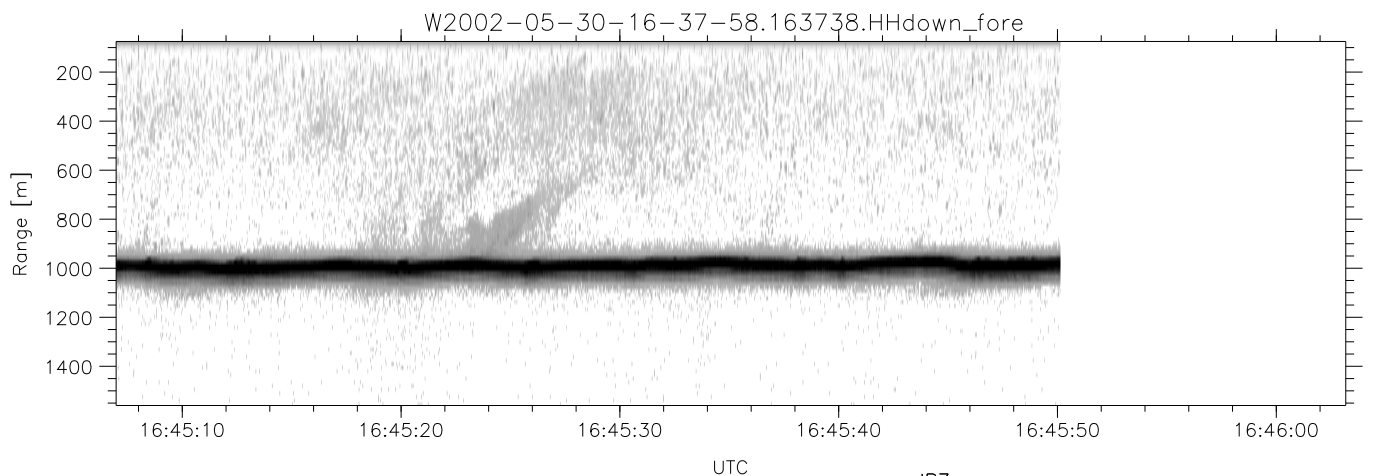
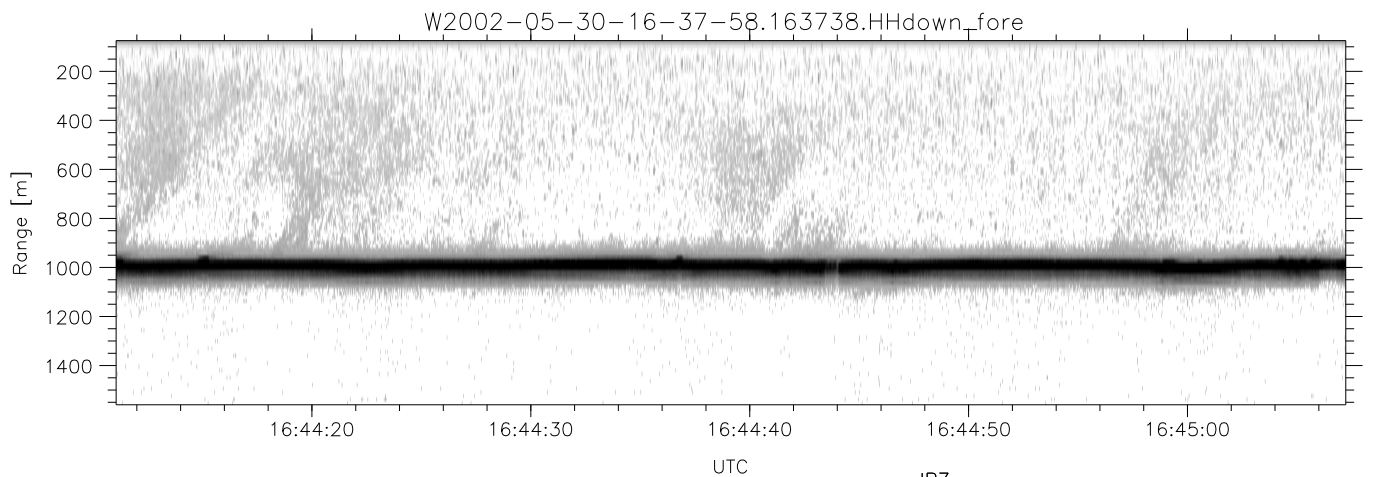
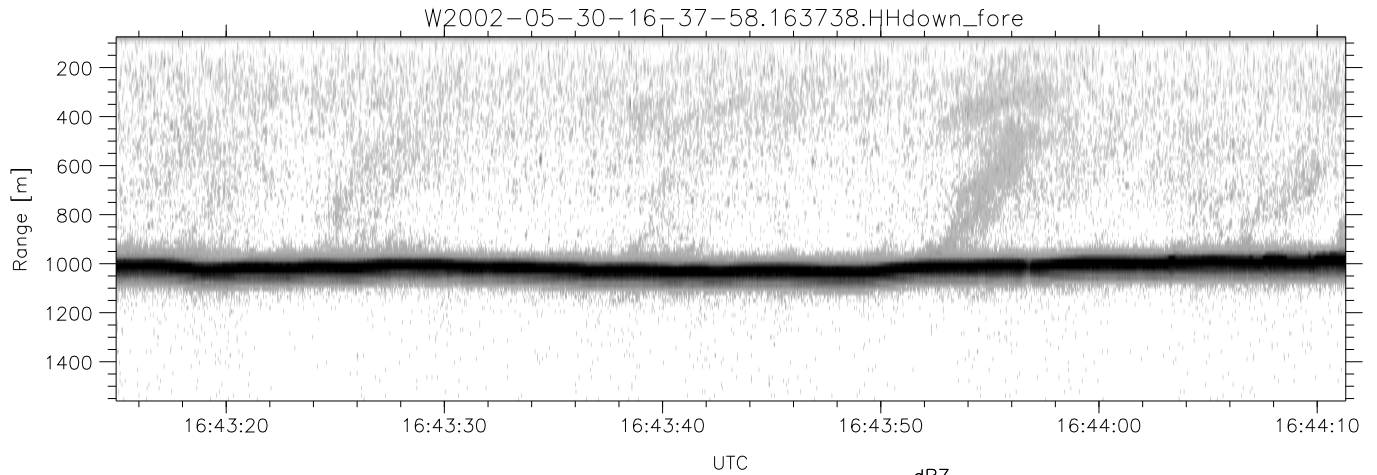
W2002-05-30-16-37-58 - PPMAG4  
 IRIG:1,UTC: 16:37:38.92 to 16:50:27.02, Dur: 769s  
 TimeLngth: 768.10s, TimeInt: 28ms (34.7pps)  
 TimeCor=-13.0s, DSPDif(mn,mx,min):28,28,245  
 PPS(min,max,std): 19,36,2.12  
 Prof: 11109 to 37798, NumProf(t/r): 26689/17069  
 ProcTime/Recs: 16:37:38-16:45:50/0-17068  
 MxACQtime: 33ms; DRate: 194.5KB/s; Flags: 0, 0, 0  
 Pulse: 275ns, IFilt: 5.0MHz; ppPol: HH HV VV  
 TxPol: HHVV, PRF: 20 10 20 10 kHz  
 Range: Delay 75m, Spacing 15m, Gates 100  
 Ave. Pulses: 84, Rng/Prof Aspect@90m/s: 5.8

|           | Min    | Max    | Mean   | Std    | Varc% |
|-----------|--------|--------|--------|--------|-------|
| hhN(dB)   | -66.10 | -62.85 | -64.42 | -74.55 | 9.7   |
| vvN(dB)   | -66.02 | -62.70 | -64.34 | -74.48 | 9.7   |
| hhL(dB)   | -12.23 | -5.51  | -8.34  | -14.85 | 22.3  |
| vvL(dB)   | -30.53 | -9.49  | -11.91 | -16.71 | 33.1  |
| ppN(m/s)  | -12.78 | 12.41  | 0.01   | 4.13   |       |
| ppT(m/s)  | -100.9 | 98.00  | 0.10   | 32.60  |       |
| hh/vv(dB) | -NaN   | 103.34 | -NaN   | 82.32  | -659  |
| vh/hh(dB) | -NaN   | -2.95  | -36.52 | -23.47 | 2016  |
| hv/vv(dB) | -NaN   | -15.54 | -40.37 | -32.86 | 563.  |
| hnjmp(dB) | -1.91  | 2.30   | 0.14   | -8.54  | 13.6  |
| vnjmp(dB) | -1.90  | 2.27   | 0.15   | -8.51  | 13.6  |



IHOP 2002 (dual-antenna config, modes 1,3,4,7) Data (cal: 55.0,50.0)

|   |             |        |        |        |        |       |
|---|-------------|--------|--------|--------|--------|-------|
| W2002-05-30-16-37-58 - PPMAG4                     |             |        |        |        |        |       |
| IRIG:1,UTC: 16:37:38.92 to 16:50:27.02, Dur: 769s | hhN (dB)    | Min    | Max    | Mean   | Std    | Varc% |
| TimeLngth: 768.10s, TimeInt: 28ms (34.7pps)       | vvN (dB)    | -66.10 | -62.85 | -64.42 | -74.55 | 9.7   |
| TimeCor=-13.0s, DSPDif(mn,mx,min):28,28,245       | hhL (dB)    | -66.02 | -62.70 | -64.34 | -74.48 | 9.7   |
| PPS(min,max,std): 19,36,2.12                      | vvL (dB)    | -12.23 | -5.51  | -8.34  | -14.85 | 22.3  |
| Prof: 11109 to 37798, NumProf(t/r): 26689/17069   | ppN (m/s)   | -30.53 | -9.49  | -11.91 | -16.71 | 33.1  |
| ProcTime/Recs: 16:37:38-16:45:50/0-17068          | ppT (m/s)   | -12.78 | 12.41  | 0.01   | 4.13   |       |
| MxAcQtime: 33ms; DRate: 194.5KB/s; Flags: 0, 0, 0 | hh/vv (dB)  | -100.9 | 98.00  | 0.10   | 32.60  |       |
| Pulse: 275ns, IFfilt: 5.0MHz; ppPol: HH HV VV     | vh/vh (dB)  | -NaN   | 103.34 | -NaN   | 82.32  | -659  |
| TxPol: HHVV, PRF: 20 10 20 10 kHz                 | hv/hv (dB)  | -NaN   | -2.95  | -36.52 | -23.47 | 2016  |
| Range: Delay 75m, Spacing 15m, Gates 100          | hn/jmp (dB) | -NaN   | -15.54 | -40.37 | -32.86 | 563.  |
| Ave. Pulses: 84, Rng/Prof Aspect@90m/s: 5.8       | hn/jmp (dB) | -1.91  | 2.30   | 0.14   | -8.54  | 13.6  |
|   | vn/jmp (dB) | -1.90  | 2.27   | 0.15   | -8.51  | 13.6  |



IHOP 2002 (dual-antenna config, modes 1,3,4,7) Data (cal: 55.0,50.0)

W2002-05-30-16-37-58 - PPMAG4  
 IRIG:1,UTC: 16:37:38.92 to 16:50:27.02, Dur: 769s  
 TimeLngth: 768.10s, TimeInt: 28ms (34.7pps)  
 TimeCor=-13.0s, DSPDif(mn,mx,min):28,28,245  
 PPS(min,max,std): 19,36,2.12  
 Prof: 11109 to 37798, NumProf(t/r): 26689/17069  
 ProcTime/Recs: 16:37:38-16:45:50/0-17068  
 MxACQtime: 33ms; DRate: 194.5KB/s; Flags: 0, 0, 0  
 Pulse: 275ns, IFfilt: 5.0MHz; ppPol: HH HV VV  
 TxPol: HHVV, PRF: 20 10 20 10 kHz  
 Range: Delay 75m, Spacing 15m, Gates 100  
 Ave. Pulses: 84, Rng/Prof Aspect@90m/s: 5.8

|           | Min    | Max    | Mean   | Std    | Varc% |
|-----------|--------|--------|--------|--------|-------|
| hhN(dB)   | -66.10 | -62.85 | -64.42 | -74.55 | 9.7   |
| vvN(dB)   | -66.02 | -62.70 | -64.34 | -74.48 | 9.7   |
| hhL(dB)   | -12.23 | -5.51  | -8.34  | -14.85 | 22.3  |
| vvL(dB)   | -30.53 | -9.49  | -11.91 | -16.71 | 33.1  |
| ppN(m/s)  | -12.78 | 12.41  | 0.01   | 4.13   |       |
| ppT(m/s)  | -100.9 | 98.00  | 0.10   | 32.60  |       |
| hh/vv(dB) | -NaN   | 103.34 | -NaN   | 82.32  | -659  |
| vh/hh(dB) | -NaN   | -2.95  | -36.52 | -23.47 | 2016  |
| hv/vv(dB) | -NaN   | -15.54 | -40.37 | -32.86 | 563.  |
| hnjmp(dB) | -1.91  | 2.30   | 0.14   | -8.54  | 13.6  |
| vnjmp(dB) | -1.90  | 2.27   | 0.15   | -8.51  | 13.6  |