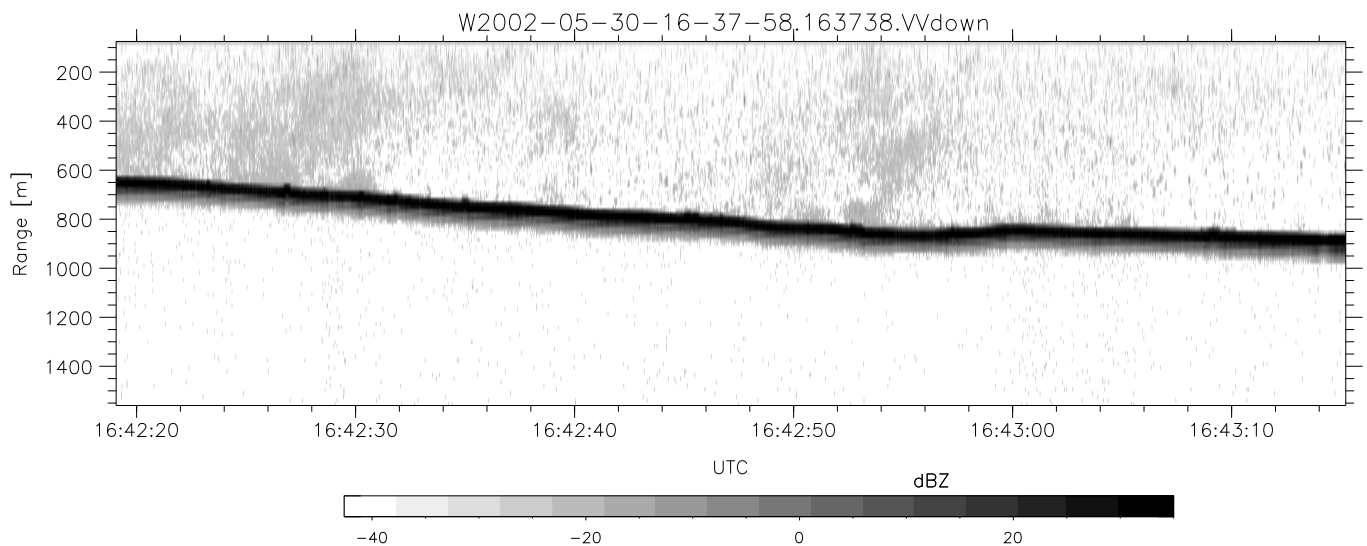
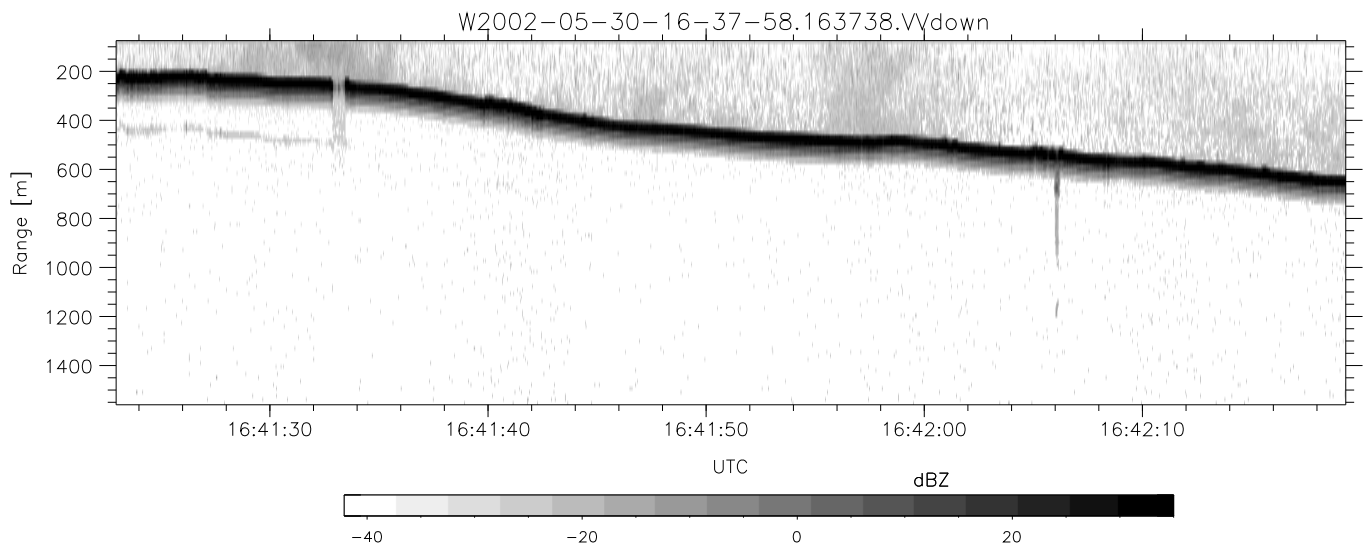
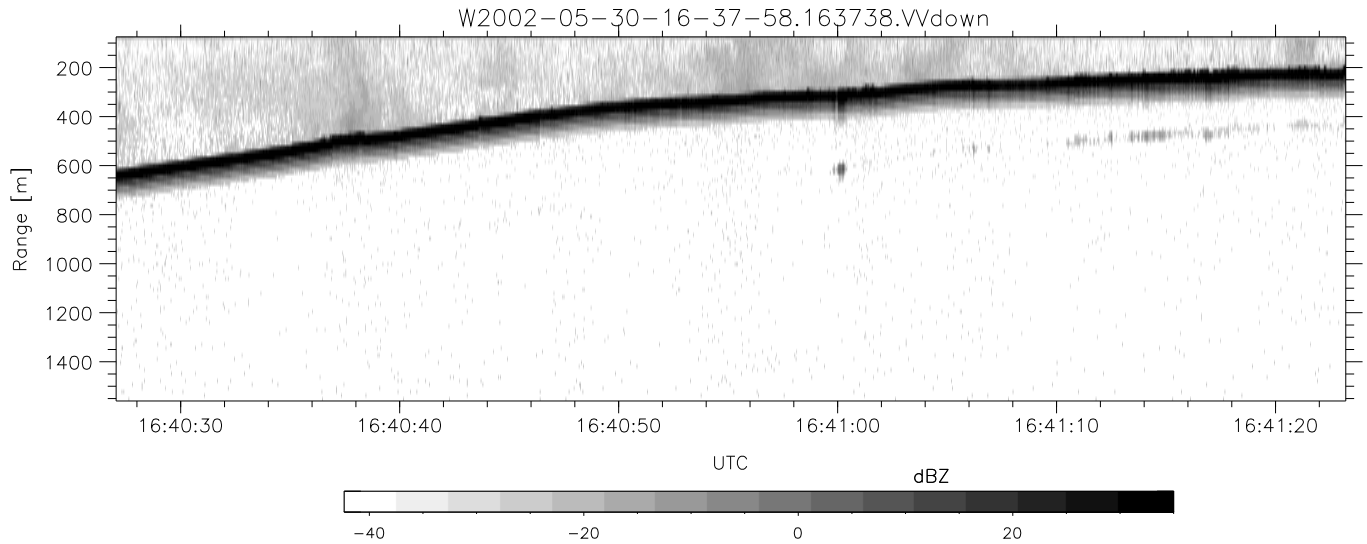


IHOP 2002 (dual-antenna config, modes 1,3,4,7) Data (cal: 55.0,50.0)

W2002-05-30-16-37-58 - PPMAG4
 IRIG:1,UTC: 16:37:38.92 to 16:50:27.02, Dur: 769s
 TimeLngth: 768.10s, TimeInt: 28ms (34.7pps)
 TimeCor=-13.0s, DSPDif(mn,mx,min):28,28,245
 PPS(min,max,std): 19,36,2.12
 Prof: 11109 to 37798, NumProf(t/r): 26689/17069
 ProcTime/Recs: 16:37:38-16:45:50/0-17068
 MxAcQtime: 33ms; DRate: 194.5KB/s; Flags: 0, 0, 0
 Pulse: 275ns, IFilt: 5.0MHz; ppPol: HH HV VV
 TxPol: HHVV, PRF: 20 10 20 10 kHz
 Range: Delay 75m, Spacing 15m, Gates 100
 Ave. Pulses: 84, Rng/Prof Aspect@90m/s: 5.8

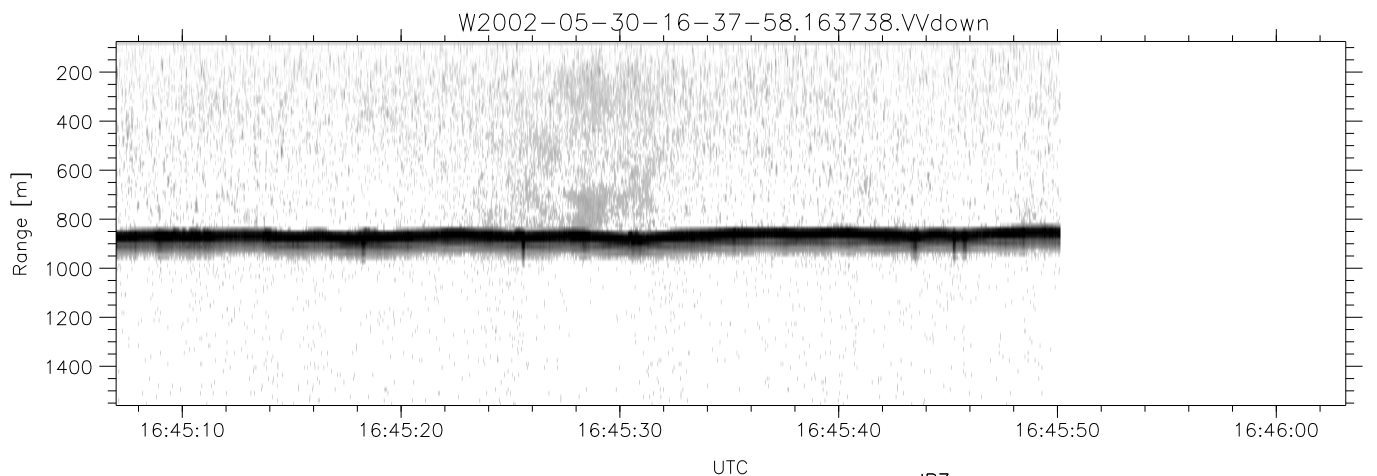
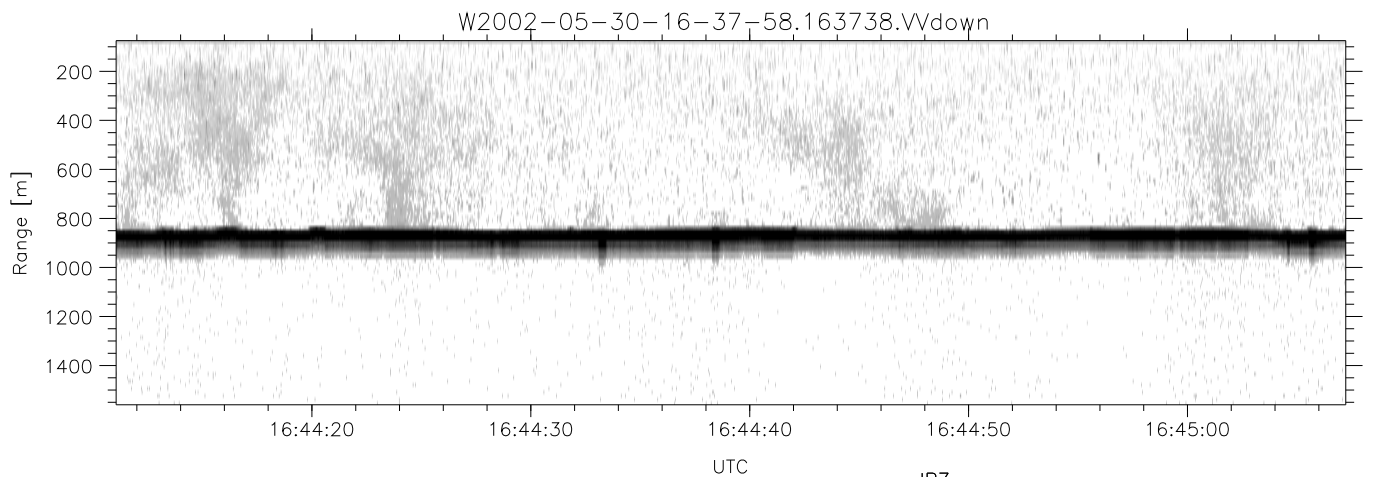
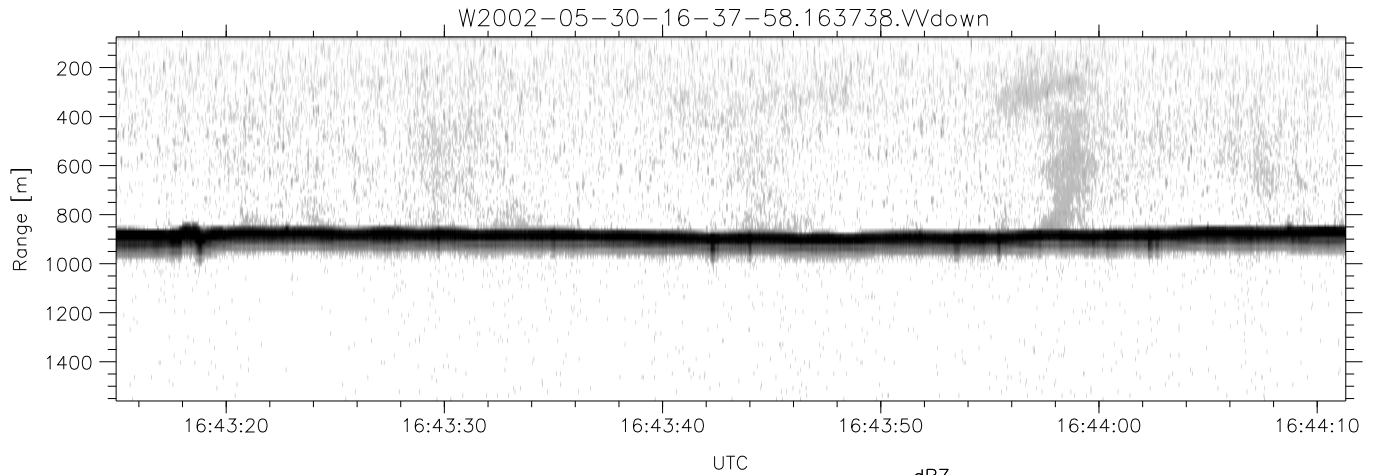
	Min	Max	Mean	Std	Varc%
hhN(dB)	-66.10	-62.85	-64.42	-74.55	9.7
vvN(dB)	-66.02	-62.70	-64.34	-74.48	9.7
hhL(dB)	-12.23	-5.51	-8.34	-14.85	22.3
vvL(dB)	-30.53	-9.49	-11.91	-16.71	33.1
ppN(m/s)	-12.78	12.41	0.01	4.13	
ppT(m/s)	-100.9	98.00	0.10	32.60	
hh/vv(dB)	-NaN	103.34	-NaN	82.32	-659
vh/hh(dB)	-NaN	-2.95	-36.52	-23.47	2016
hv/vv(dB)	-NaN	-15.54	-40.37	-32.86	563.
hnjmp(dB)	-1.91	2.30	0.14	-8.54	13.6
vnjmp(dB)	-1.90	2.27	0.15	-8.51	13.6



IHOP 2002 (dual-antenna config, modes 1,3,4,7) Data (cal: 55.0,50.0)

W2002-05-30-16-37-58 - PPMAG4
 IRIG:1,UTC: 16:37:38.92 to 16:50:27.02, Dur: 769s
 TimeLngth: 768.10s, TimeInt: 28ms (34.7pps)
 TimeCor=-13.0s, DSPDif(mn,mx,min):28,28,245
 PPS(min,max,std): 19,36,2.12
 Prof: 11109 to 37798, NumProf(t/r): 26689/17069
 ProcTime/Recs: 16:37:38-16:45:50/0-17068
 MxACQtime: 33ms; DRate: 194.5KB/s; Flags: 0, 0, 0
 Pulse: 275ns, IFfilt: 5.0MHz; ppPol: HH HV VV
 TxPol: HHVV, PRF: 20 10 20 10 kHz
 Range: Delay 75m, Spacing 15m, Gates 100
 Ave. Pulses: 84, Rng/Prof Aspect@90m/s: 5.8

	Min	Max	Mean	Std	Varc%
hhN(dB)	-66.10	-62.85	-64.42	-74.55	9.7
vvN(dB)	-66.02	-62.70	-64.34	-74.48	9.7
hhL(dB)	-12.23	-5.51	-8.34	-14.85	22.3
vvL(dB)	-30.53	-9.49	-11.91	-16.71	33.1
ppN(m/s)	-12.78	12.41	0.01	4.13	
ppT(m/s)	-100.9	98.00	0.10	32.60	
hh/vv(dB)	-NaN	103.34	-NaN	82.32	-659
vh/hh(dB)	-NaN	-2.95	-36.52	-23.47	2016
hv/vv(dB)	-NaN	-15.54	-40.37	-32.86	563.
hnjmp(dB)	-1.91	2.30	0.14	-8.54	13.6
vnjmp(dB)	-1.90	2.27	0.15	-8.51	13.6



IHOP 2002 (dual-antenna config, modes 1,3,4,7) Data (cal: 55.0,50.0)

W2002-05-30-16-37-58 - PPMAG4	Min	Max	Mean	Std	Varc%
IRIG:1,UTC: 16:37:38.92 to 16:50:27.02, Dur: 769s	-66.10	-62.85	-64.42	-74.55	9.7
TimeLngth: 768.10s, TimeInt: 28ms (34.7pps)	-66.02	-62.70	-64.34	-74.48	9.7
TimeCor=-13.0s, DSPDif(mn,mx,min):28,28,245	-12.23	-5.51	-8.34	-14.85	22.3
PPS(min,max,std): 19,36,2.12	-30.53	-9.49	-11.91	-16.71	33.1
Prof: 11109 to 37798, NumProf(t/r): 26689/17069	ppN(m/s)	-12.78	12.41	0.01	4.13
ProcTime/Recs: 16:37:38-16:45:50/0-17068	ppT(m/s)	-100.9	98.00	0.10	32.60
MxACQtime: 33ms; DRate: 194.5KB/s; Flags: 0, 0, 0	hh/vv(dB)	-NaN	103.34	-NaN	82.32 -659
Pulse: 275ns, IFfilt: 5.0MHz; ppPol: HH HV VV	vh/hh(dB)	-NaN	-2.95	-36.52	-23.47 2016
TxPol: HHVV, PRF: 20 10 20 10 kHz	hv/vv(dB)	-NaN	-15.54	-40.37	-32.86 563.
Range: Delay 75m, Spacing 15m, Gates 100	hnjmp(dB)	-1.91	2.30	0.14	-8.54 13.6
Ave. Pulses: 84, Rng/Prof Aspect@90m/s: 5.8	vnjmp(dB)	-1.90	2.27	0.15	-8.51 13.6