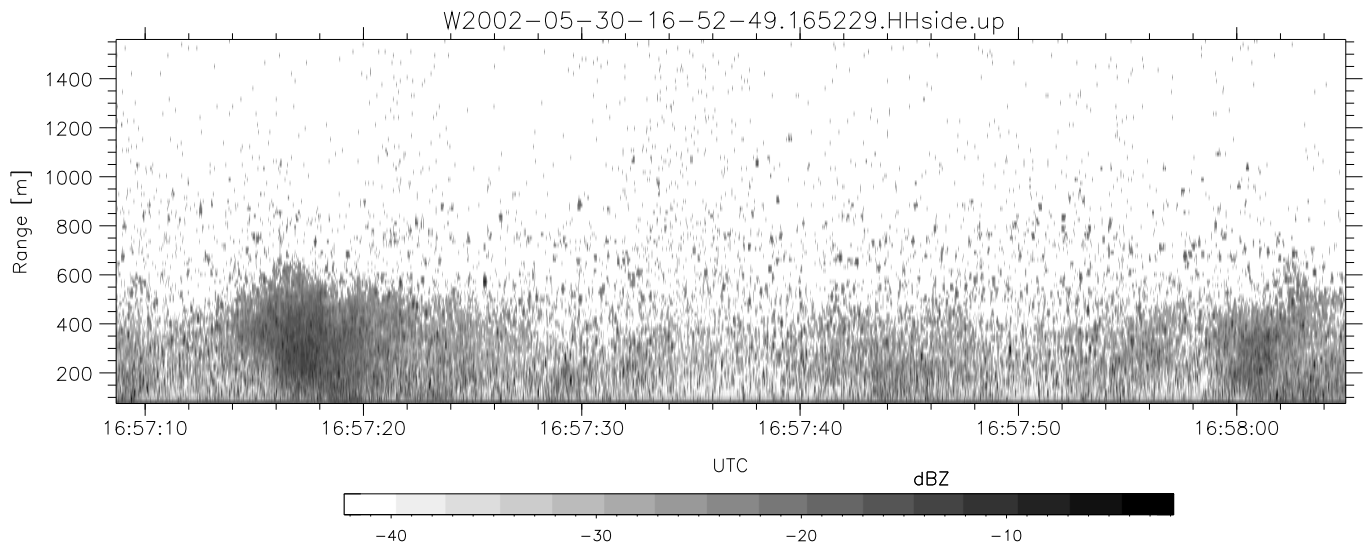
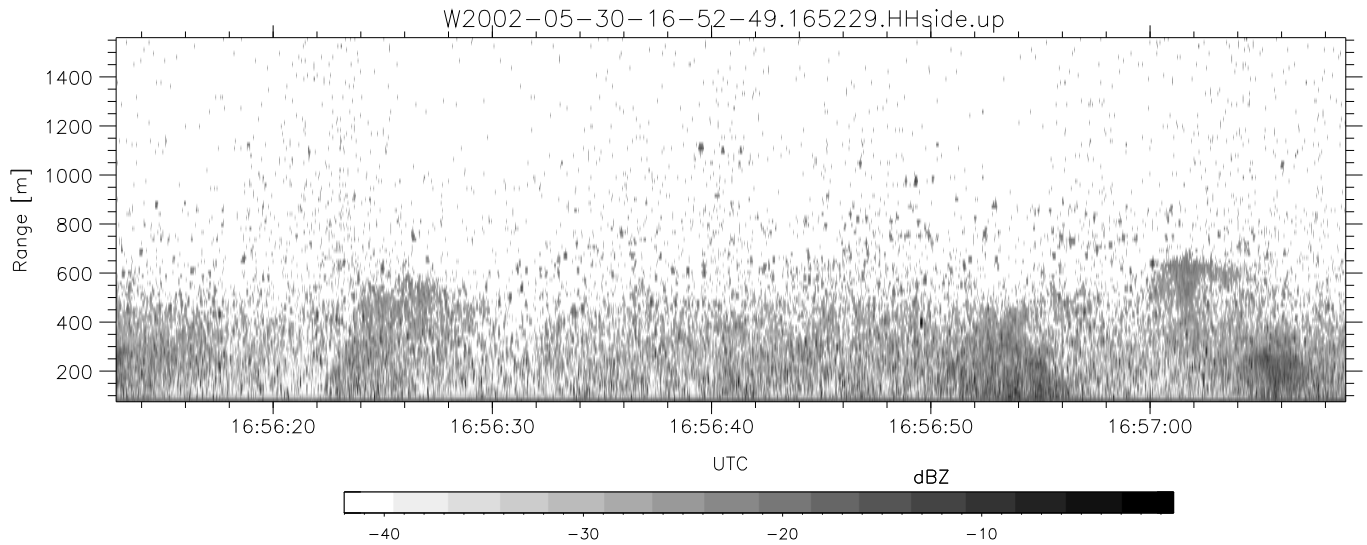
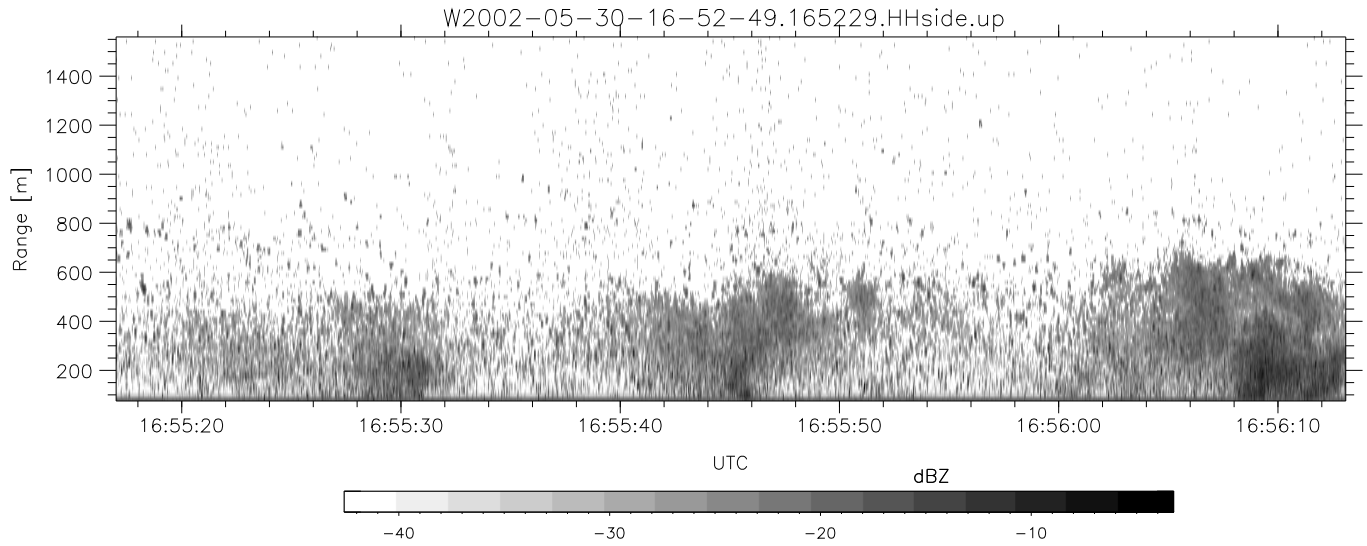


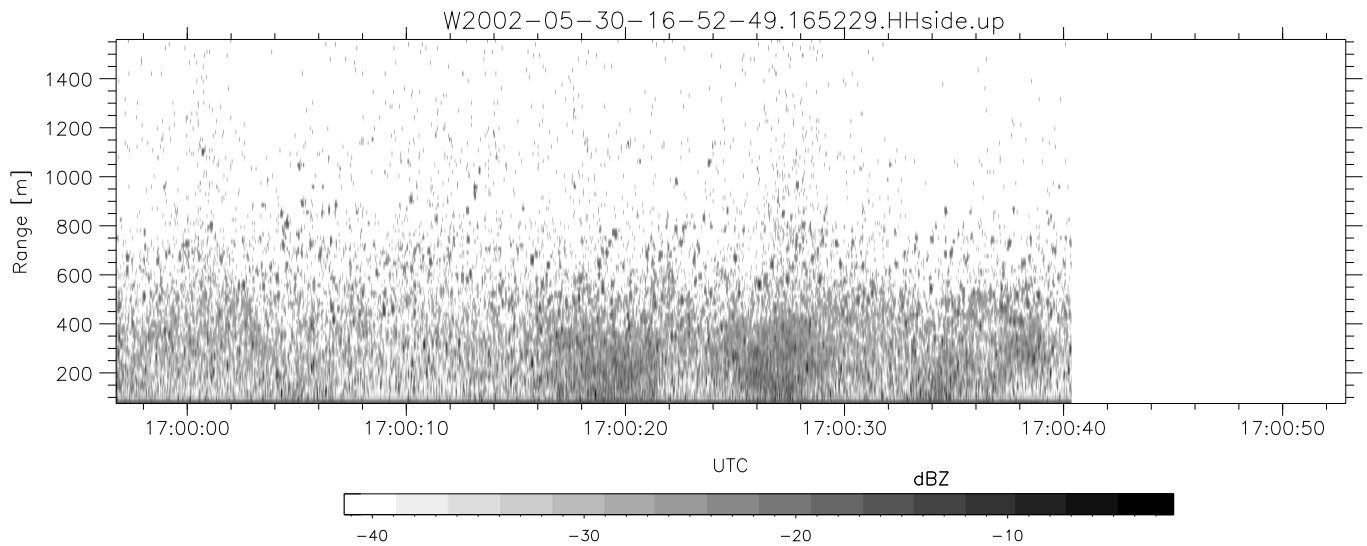
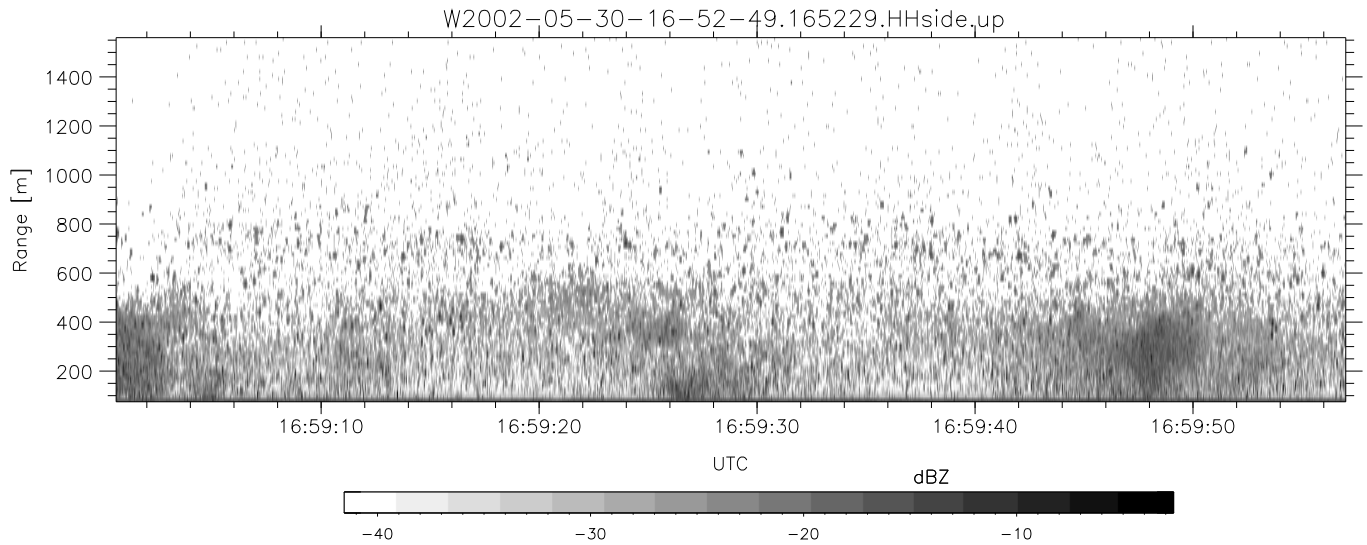
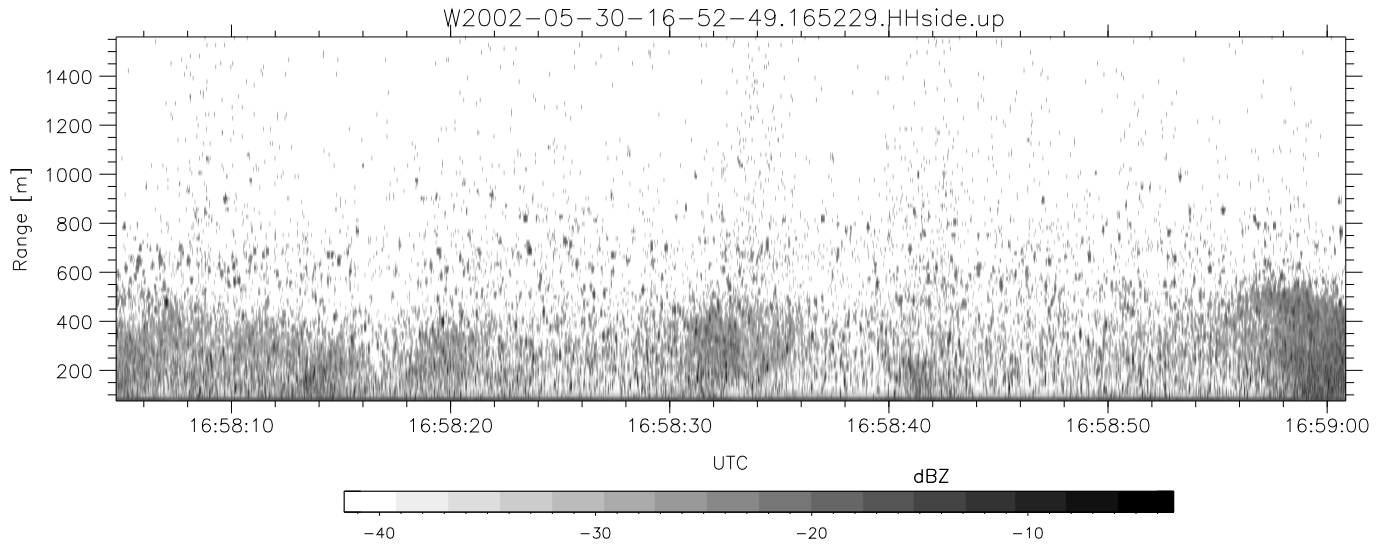
IHOP 2002 (dual-antenna config, modes 1,3,4,7) Data (cal: 49.0,50.0)

	Min	Max	Mean	Std	Varc%	
W2002-05-30-16-52-49 - PPMAG4						
IRIG:1,UTC: 16:52:29.45 to 17:25:25.24, Dur: 1976s	hhN(dB)	-66.58	-63.17	-64.76	-74.87	9.8
TimeLngth: 1975.80s, TimeInt: 28ms (34.7pps)	vvN(dB)	-66.70	-60.03	-64.25	-73.23	12.7
TimeCor=-13.0s, DSPDif(mn,mx,min):28,28,596	hhL(dB)	-12.71	-5.03	-9.22	-14.66	28.6
PPS(min,max,std): 15,36,2.15	vvL(dB)	-37.69	-10.10	-13.38	-17.21	41.4
Prof: 563 to 69162, NumProf(t/r): 68599/17069	ppN(m/s)	-12.62	12.84	-0.02	4.12	
ProcTime/Recs: 16:52:29-17:00:40/0-17068	ppT(m/s)	-99.71	101.44	-0.14	32.58	
MxACQtime: 33ms; DRate: 194.3KB/s; Flags: 0, 0, 0	hh/vv(dB)	-NaN	58.05	17.54	36.39	7676
Pulse: 275ns, IFfilt: 5.0MHz; ppPol: HH HV VV	vh/hh(dB)	-NaN	-11.88	-27.40	-21.90	355.
TxPol: HHVV, PRF: 20 10 20 10 kHz	hv/vv(dB)	-NaN	-1.59	-26.77	-20.98	378.
Range: Delay 75m, Spacing 15m, Gates 100	hn/jmp(dB)	-2.24	2.28	0.15	-8.44	13.8
Ave. Pulses: 84, Rng/Prof Aspect@90m/s: 5.8	vn/jmp(dB)	-2.00	2.07	0.13	-8.50	13.7



IHOP 2002 (dual-antenna config, modes 1,3,4,7) Data (cal: 49.0,50.0)

	Min	Max	Mean	Std	Varc%	
W2002-05-30-16-52-49 - PPMAG4						
IRIG:1,UTC: 16:52:29.45 to 17:25:25.24, Dur: 1976s	hhN (dB)	-66.58	-63.17	-64.76	-74.87	9.8
TimeLngth: 1975.80s, TimeInt: 28ms (34.7pps)	vvN (dB)	-66.70	-60.03	-64.25	-73.23	12.7
TimeCor=-13.0s, DSPDif(mn,mx,min):28,28,596	hhL (dB)	-12.71	-5.03	-9.22	-14.66	28.6
PPS(min,max,std): 15,36,2.15	vvL (dB)	-37.69	-10.10	-13.38	-17.21	41.4
Prof: 563 to 69162, NumProf(t/r): 68599/17069	ppN (m/s)	-12.62	12.84	-0.02	4.12	
ProcTime/Recs: 16:52:29-17:00:40/0-17068	ppT (m/s)	-99.71	101.44	-0.14	32.58	
MxACQtime: 33ms; DRate: 194.3KB/s; Flags: 0, 0, 0	hh/vv (dB)	-NaN	58.05	17.54	36.39	7676
Pulse: 275ns, IFfilt: 5.0MHz; ppPol: HH HV VV	vh/hh (dB)	-NaN	-11.88	-27.40	-21.90	355.
TxPol: HHVV, PRF: 20 10 20 10 kHz	hv/vv (dB)	-NaN	-1.59	-26.77	-20.98	378.
Range: Delay 75m, Spacing 15m, Gates 100	hn/jmp (dB)	-2.24	2.28	0.15	-8.44	13.8
Ave. Pulses: 84, Rng/Prof Aspect@90m/s: 5.8	vn/jmp (dB)	-2.00	2.07	0.13	-8.50	13.7



IHOP 2002 (dual-antenna config, modes 1,3,4,7) Data (cal: 49.0,50.0)

	Min	Max	Mean	Std	Varc%
W2002-05-30-16-52-49 - PPMAG4					
IRIG:1,UTC: 16:52:29.45 to 17:25:25.24, Dur: 1976s	hhN (dB)	-66.58 -63.17	-64.76	-74.87	9.8
TimeLngth: 1975.80s, TimeInt: 28ms (34.7pps)	vvN (dB)	-66.70 -60.03	-64.25	-73.23	12.7
TimeCor=-13.0s, DSPDif(mn,mx,min):28,28,596	hhL (dB)	-12.71 -5.03	-9.22	-14.66	28.6
PPS(min,max,std): 15,36,2.15	vvL (dB)	-37.69 -10.10	-13.38	-17.21	41.4
Prof: 563 to 69162, NumProf(t/r): 68599/17069	ppN (m/s)	-12.62 12.84	-0.02	4.12	
ProcTime/Recs: 16:52:29-17:00:40/0-17068	ppT (m/s)	-99.71 101.44	-0.14	32.58	
MxACQtime: 33ms; DRate: 194.3KB/s; Flags: 0, 0, 0	hh/vv (dB)	-NaN 58.05	17.54	36.39	7676
Pulse: 275ns, IFfilt: 5.0MHz; ppPol: HH HV VV	vh/hh (dB)	-NaN -11.88	-27.40	-21.90	355.
TxPol: HHVV, PRF: 20 10 20 10 kHz	hv/vv (dB)	-NaN -1.59	-26.77	-20.98	378.
Range: Delay 75m, Spacing 15m, Gates 100	hnjmp (dB)	-2.24 2.28	0.15	-8.44	13.8
Ave. Pulses: 84, Rng/Prof Aspect@90m/s: 5.8	vnjmp (dB)	-2.00 2.07	0.13	-8.50	13.7