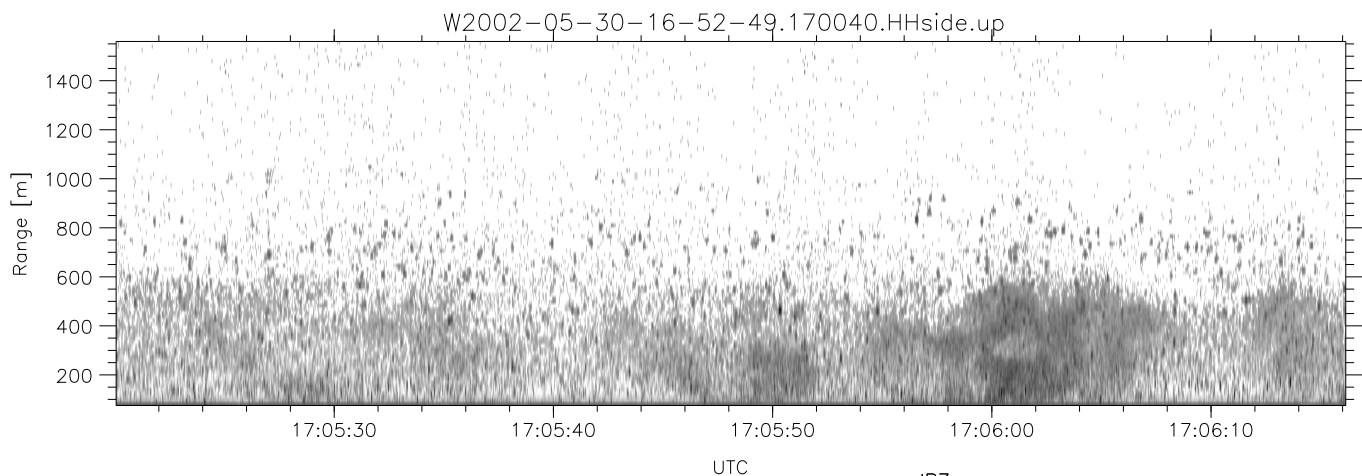
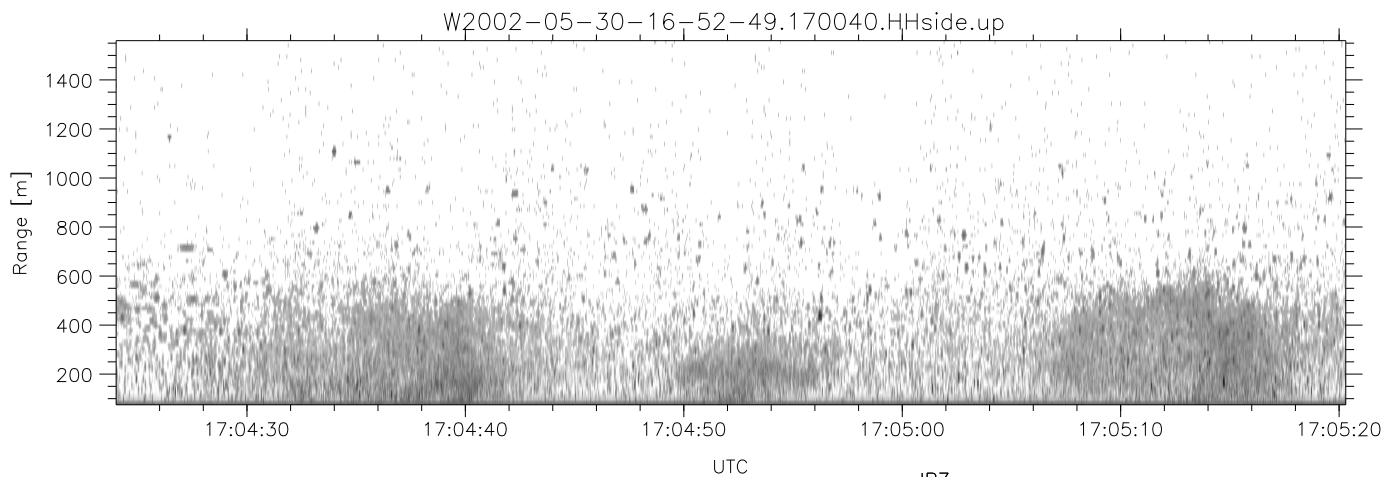
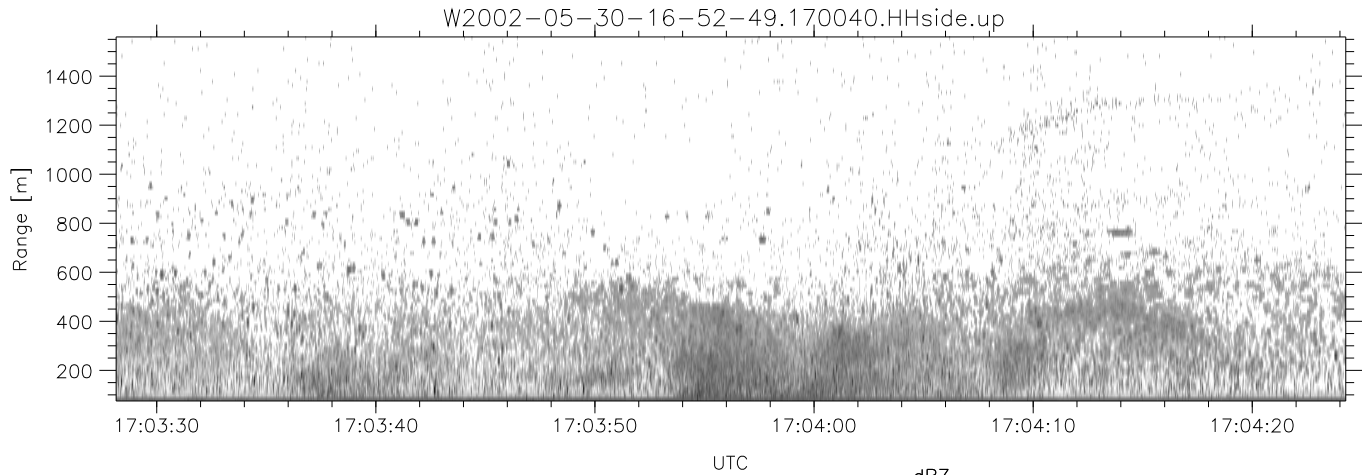


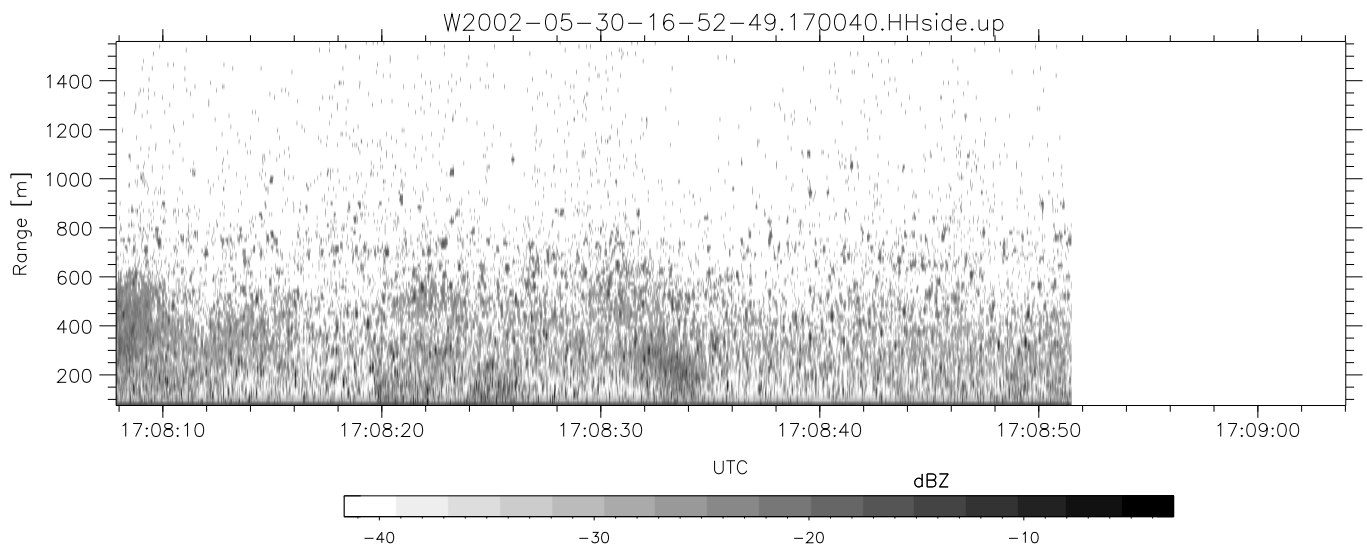
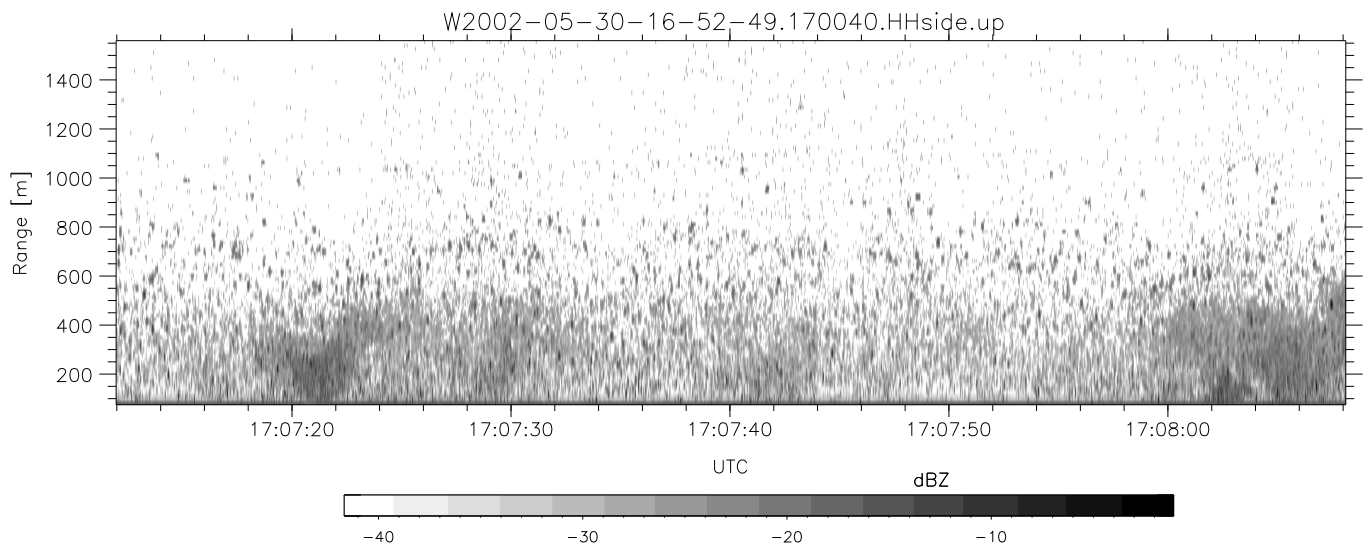
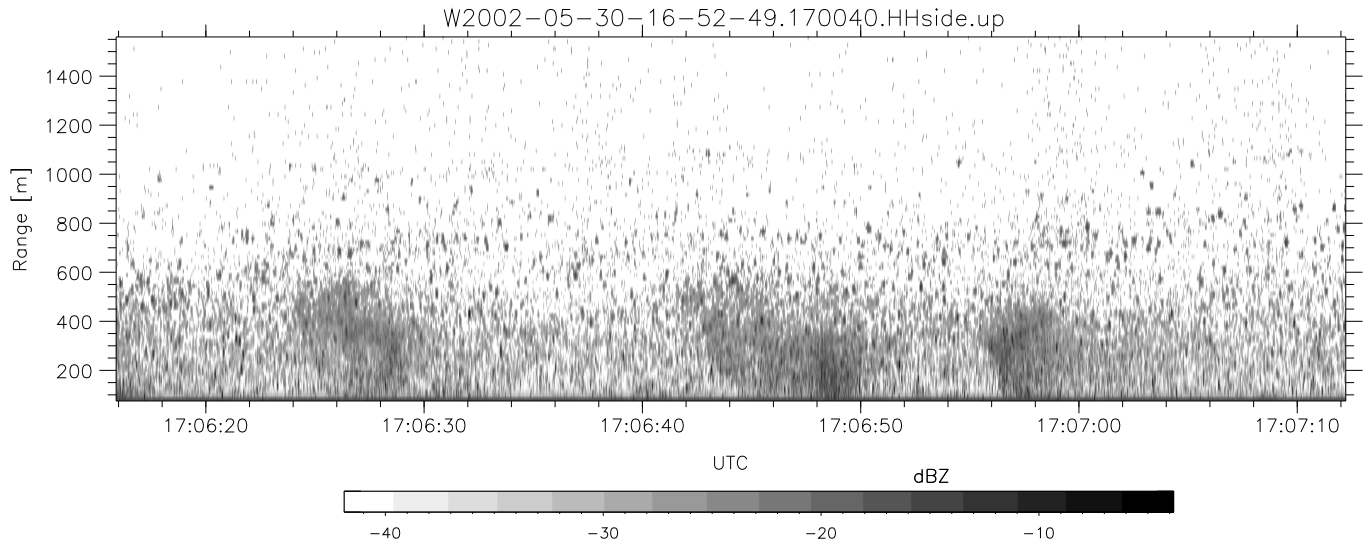
IHOP 2002 (dual-antenna config, modes 1,3,4,7) Data (cal: 49.0,50.0)

W2002-05-30-16-52-49 - PPMAG4	Min	Max	Mean	Std	Varc%	
IRIG:1,UTC: 16:52:29.45 to 17:25:25.24, Dur: 1976s	hhN(dB)	-66.58	-63.15	-64.83	-74.98	9.7
TimeLngth: 1975.80s, TimeInt: 28ms (34.7pps)	vvN(dB)	-67.15	-62.11	-65.21	-74.65	11.4
TimeCor=-13.0s, DSPDif(mn,mx,min):28,28,253	hhL(dB)	-11.51	-4.98	-8.23	-15.25	19.9
PPS(min,max,std): 28,36,1.99	vvL(dB)	-25.40	-9.83	-12.25	-17.39	30.6
Prof: 563 to 69162, NumProf(t/r): 68599/17069	ppN(m/s)	-12.58	12.80	0.00	4.16	
ProcTime/Recs: 17:00:40-17:08:51/17069-34137	ppT(m/s)	-99.39	101.10	0.03	32.85	
MxACQtime: 33ms; DRate: 194.3KB/s; Flags: 0, 0, 0	hh/vv(dB)	-NaN	62.97	19.19	39.31	1029
Pulse: 275ns, IFfilt: 5.0MHz; ppPol: HH HV VV	vh/hh(dB)	-NaN	-11.67	-29.70	-23.26	440.
TxPol: HHVV, PRF: 20 10 20 10 kHz	hv/vv(dB)	-NaN	-5.30	-23.87	-20.92	197.
Range: Delay 75m, Spacing 15m, Gates 100	hn/jmp(dB)	-2.70	1.92	-0.06	-8.73	13.6
Ave. Pulses: 84, Rng/Prof Aspect@90m/s: 5.8	vn/jmp(dB)	-2.83	2.16	-0.06	-8.68	13.8



IHOP 2002 (dual-antenna config, modes 1,3,4,7) Data (cal: 49.0,50.0)

W2002-05-30-16-52-49 - PPMAG4	Min	Max	Mean	Std	Varc%	
IRIG:1,UTC: 16:52:29.45 to 17:25:25.24, Dur: 1976s	hhN (dB)	-66.58	-63.15	-64.83	-74.98	9.7
TimeLngth: 1975.80s, TimeInt: 28ms (34.7pps)	vvN (dB)	-67.15	-62.11	-65.21	-74.65	11.4
TimeCor=-13.0s, DSPDif(mn,mx,min):28,28,253	hhL (dB)	-11.51	-4.98	-8.23	-15.25	19.9
PPS(min,max,std): 28,36,1.99	vvL (dB)	-25.40	-9.83	-12.25	-17.39	30.6
Prof: 563 to 69162, NumProf(t/r): 68599/17069	ppN (m/s)	-12.58	12.80	0.00	4.16	
ProcTime/Recs: 17:00:40-17:08:51/17069-34137	ppT (m/s)	-99.39	101.10	0.03	32.85	
MxACQtime: 33ms; DRate: 194.3KB/s; Flags: 0, 0, 0	hh/vv (dB)	-NaN	62.97	19.19	39.31	1029
Pulse: 275ns, IFilt: 5.0MHz; ppPol: HH HV VV	vh/hh (dB)	-NaN	-11.67	-29.70	-23.26	440.
TxPol: HHVV, PRF: 20 10 20 10 kHz	hv/vv (dB)	-NaN	-5.30	-23.87	-20.92	197.
Range: Delay 75m, Spacing 15m, Gates 100	hn/jmp (dB)	-2.70	1.92	-0.06	-8.73	13.6
Ave. Pulses: 84, Rng/Prof Aspect@90m/s: 5.8	vn/jmp (dB)	-2.83	2.16	-0.06	-8.68	13.8



IHOP 2002 (dual-antenna config, modes 1,3,4,7) Data (cal: 49.0,50.0)

W2002-05-30-16-52-49 - PPMAG4	Min	Max	Mean	Std	Varc%
IRIG:1,UTC: 16:52:29.45 to 17:25:25.24, Dur: 1976s	-66.58	-63.15	-64.83	-74.98	9.7
TimeLngth: 1975.80s, TimeInt: 28ms (34.7pps)	-67.15	-62.11	-65.21	-74.65	11.4
TimeCor=-13.0s, DSPDif(mn,mx,min):28,28,253	-11.51	-4.98	-8.23	-15.25	19.9
PPS(min,max,std): 28,36,1.99	-25.40	-9.83	-12.25	-17.39	30.6
Prof: 563 to 69162, NumProf(t/r): 68599/17069	ppN(m/s)	-12.58	12.80	0.00	4.16
ProcTime/Recs: 17:00:40-17:08:51/17069-34137	ppT(m/s)	-99.39	101.10	0.03	32.85
MxACQtime: 33ms; DRate: 194.3KB/s; Flags: 0, 0, 0	hh/vv(dB)	-NaN	62.97	19.19	39.31 1029
Pulse: 275ns, IFilt: 5.0MHz; ppPol: HH HV VV	vh/hh(dB)	-NaN	-11.67	-29.70	-23.26 440.
TxPol: HHVV, PRF: 20 10 20 10 kHz	hv/vv(dB)	-NaN	-5.30	-23.87	-20.92 197.
Range: Delay 75m, Spacing 15m, Gates 100	hnjmp(dB)	-2.70	1.92	-0.06	-8.73 13.6
Ave. Pulses: 84, Rng/Prof Aspect@90m/s: 5.8	vnjmp(dB)	-2.83	2.16	-0.06	-8.68 13.8