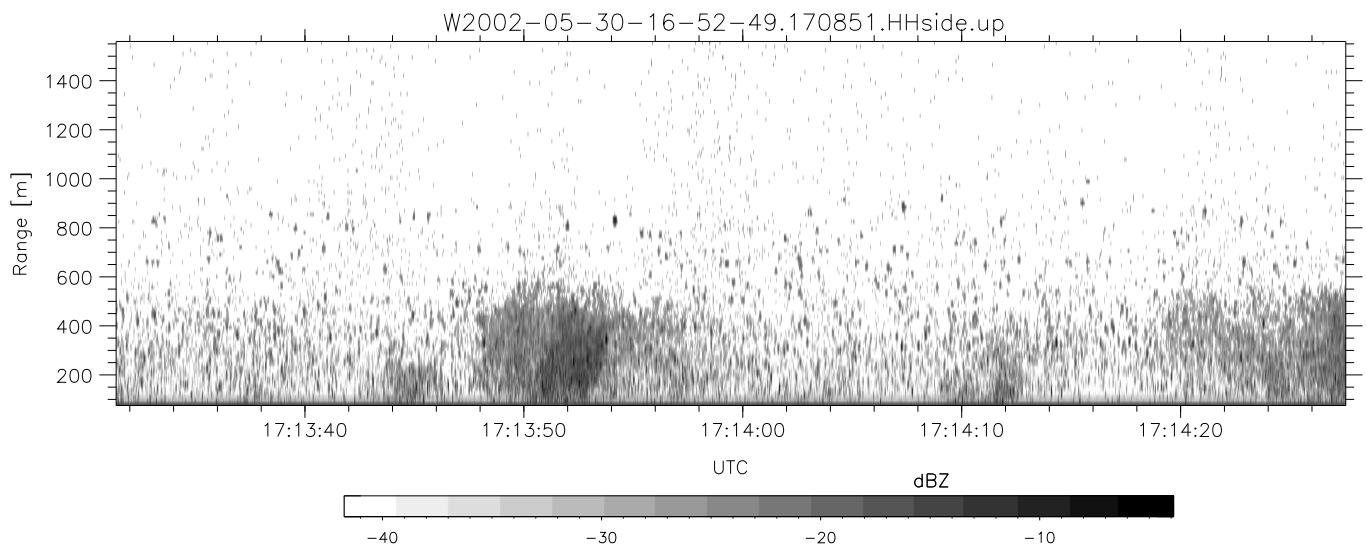
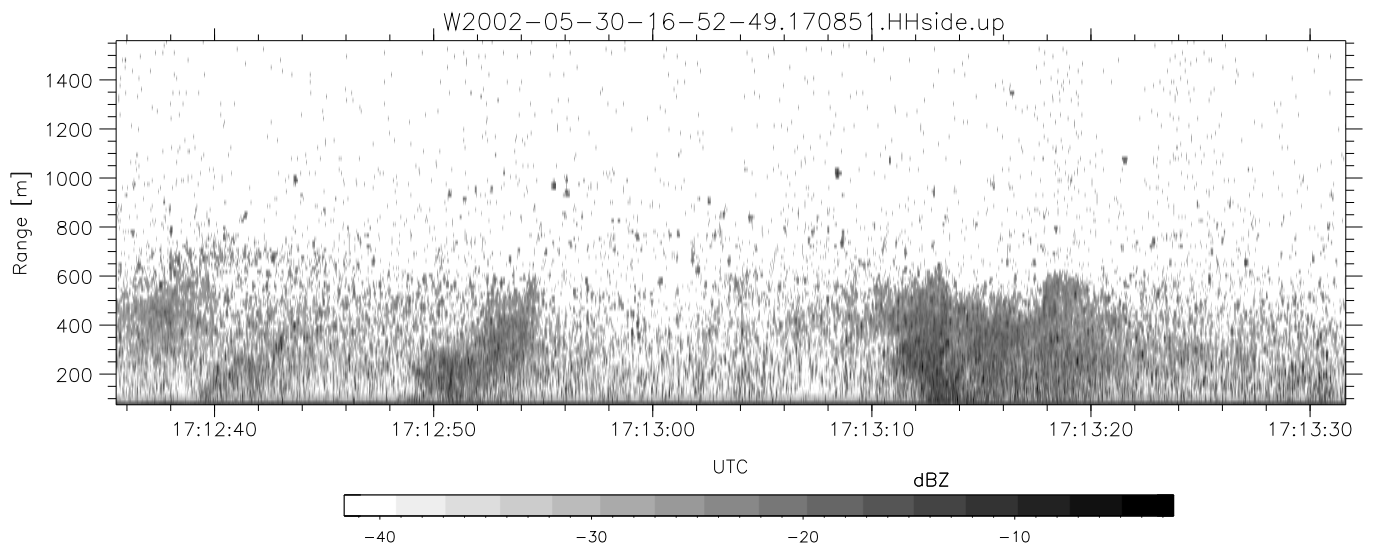
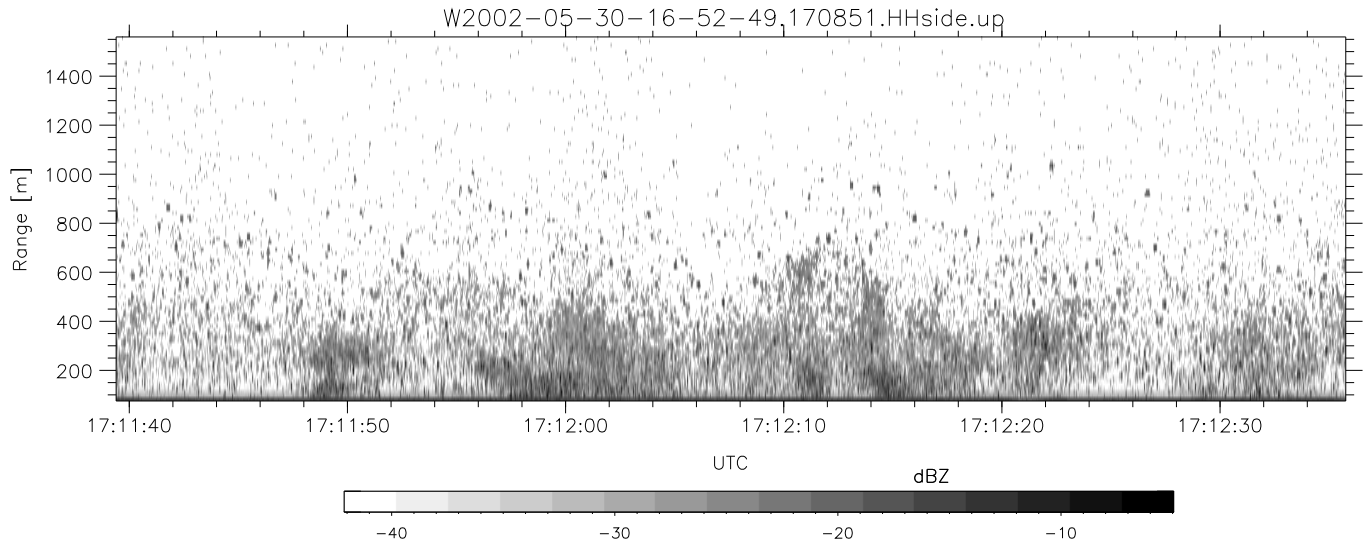


IHOP 2002 (dual-antenna config, modes 1,3,4,7) Data (cal: 49.0,50.0)

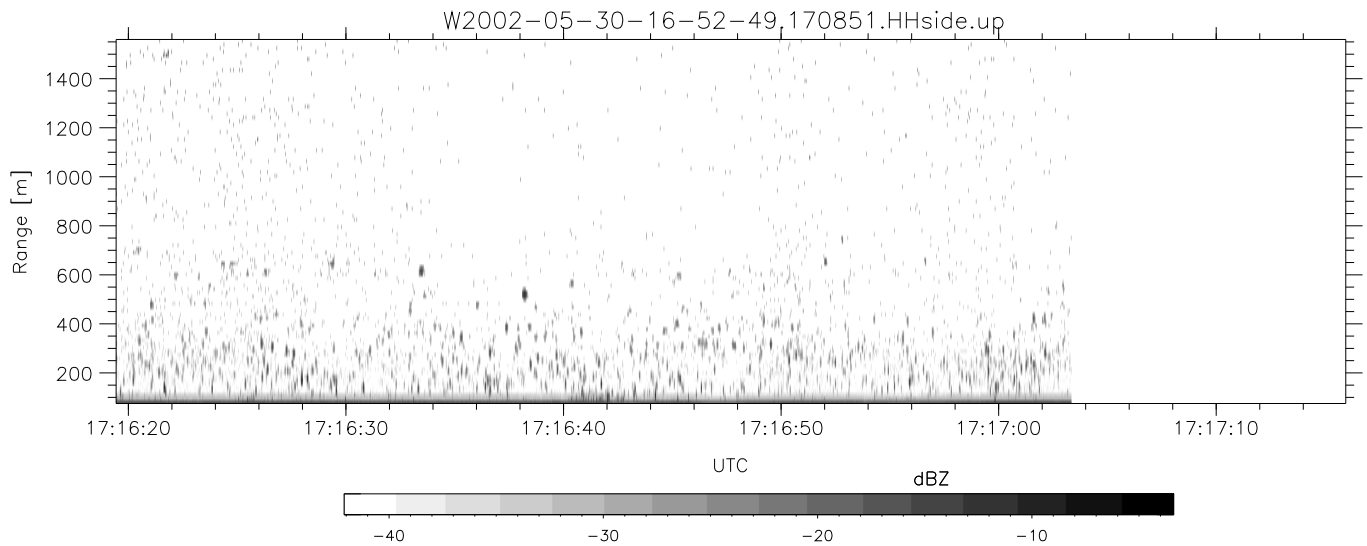
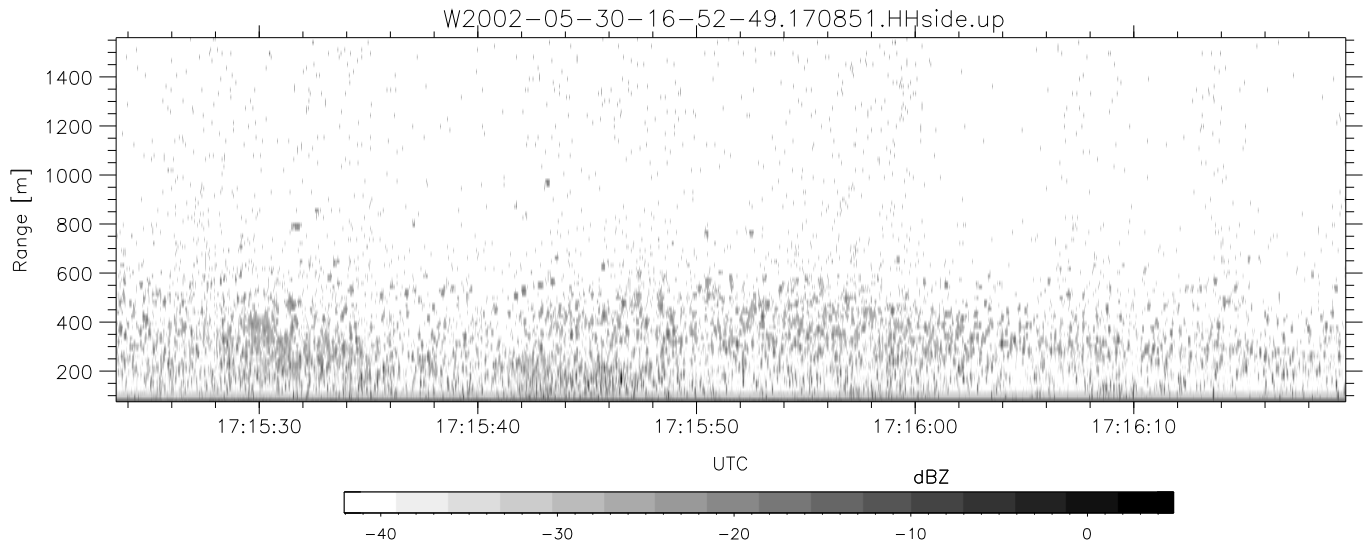
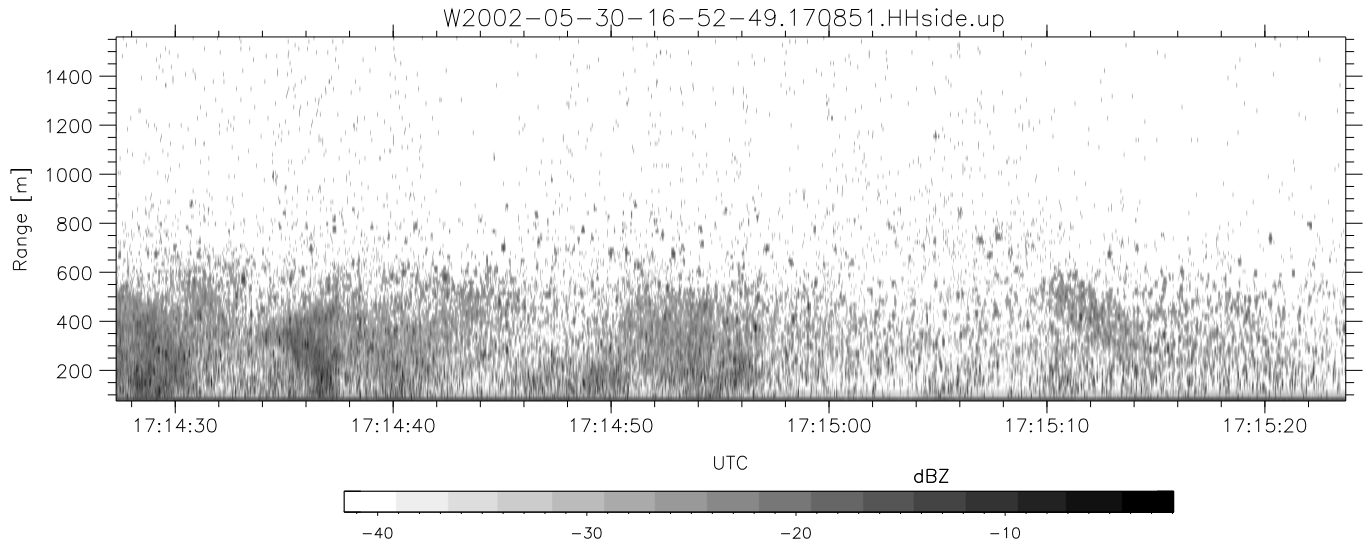
W2002-05-30-16-52-49 - PPMAG4
 IRIG:1,UTC: 16:52:29.45 to 17:25:25.24, Dur: 1976s
 TimeLngth: 1975.80s, TimeInt: 28ms (34.7pps)
 TimeCor=-13.0s, DSPDif(mn,mx,min):28,28,255
 PPS(min,max,std): 27,36,2.06
 Prof: 563 to 69162, NumProf(t/r): 68599/17069
 ProcTime/Recs: 17:08:51-17:17:03/34138-51206
 MxACQtime: 33ms; DRate: 194.3KB/s; Flags: 0, 0, 0
 Pulse: 275ns, IFfilt: 5.0MHz; ppPol: HH HV VV
 TxPol: HHVV, PRF: 20 10 20 10 kHz
 Range: Delay 75m, Spacing 15m, Gates 100
 Ave. Pulses: 84, Rng/Prof Aspect@90m/s: 5.8

	Min	Max	Mean	Std	Varc%
hhN(dB)	-66.84	-63.42	-64.97	-75.09	9.7
vvN(dB)	-67.84	-62.10	-65.68	-71.97	23.5
hhL(dB)	-18.80	-5.96	-8.56	-15.63	19.6
vvL(dB)	-47.08	-10.33	-21.59	-17.98	229.
ppN(m/s)	-12.56	12.46	-0.02	4.16	
ppT(m/s)	-99.20	98.44	-0.18	32.85	
hh/vv(dB)	-NaN	61.12	-NaN	50.34	-212
vh/hh(dB)	-NaN	12.18	-9.02	1.17	1046
hv/vv(dB)	-NaN	-2.67	-19.11	-15.84	212.
hnjmp(dB)	-2.03	2.25	0.16	-8.49	13.7
vnjmp(dB)	-2.26	2.38	0.16	-8.40	13.9



IHOP 2002 (dual-antenna config, modes 1,3,4,7) Data (cal: 49.0,50.0)

	Min	Max	Mean	Std	Varc%
W2002-05-30-16-52-49 - PPMAG4					
IRIG:1,UTC: 16:52:29.45 to 17:25:25.24, Dur: 1976s	hhN (dB)	-66.84 -63.42	-64.97	-75.09	9.7
TimeLngth: 1975.80s, TimeInt: 28ms (34.7pps)	vvN (dB)	-67.84 -62.10	-65.68	-71.97	23.5
TimeCor=-13.0s, DSPDif(mn,mx,min):28,28,255	hhL (dB)	-18.80 -5.96	-8.56	-15.63	19.6
PPS(min,max,std): 27,36,2.06	vvL (dB)	-47.08 -10.33	-21.59	-17.98	229.
Prof: 563 to 69162, NumProf(t/r): 68599/17069	ppN (m/s)	-12.56 12.46	-0.02	4.16	
ProcTime/Recs: 17:08:51-17:17:03/34138-51206	ppT (m/s)	-99.20 98.44	-0.18	32.85	
MxAcQtime: 33ms; DRate: 194.3KB/s; Flags: 0, 0, 0	hh/vv (dB)	-NaN 61.12	-NaN	50.34	-212
Pulse: 275ns, IFilt: 5.0MHz; ppPol: HH HV VV	vh/hh (dB)	-NaN 12.18	-9.02	1.17	1046
TxPol: HHVV, PRF: 20 10 20 10 kHz	hv/vv (dB)	-NaN -2.67	-19.11	-15.84	212.
Range: Delay 75m, Spacing 15m, Gates 100	hnjmp (dB)	-2.03 2.25	0.16	-8.49	13.7
Ave. Pulses: 84, Rng/Prof Aspect@90m/s: 5.8	vnjmp (dB)	-2.26 2.38	0.16	-8.40	13.9



IHOP 2002 (dual-antenna config, modes 1,3,4,7) Data (cal: 49.0,50.0)

	Min	Max	Mean	Std	Varc%	
W2002-05-30-16-52-49 - PPMAG4						
IRIG:1,UTC: 16:52:29.45 to 17:25:25.24, Dur: 1976s	hhN (dB)	-66.84	-63.42	-64.97	-75.09	9.7
TimeLngth: 1975.80s, TimeInt: 28ms (34.7pps)	vvN (dB)	-67.84	-62.10	-65.68	-71.97	23.5
TimeCor=-13.0s, DSPDif(mn,mx,min):28,28,255	hhL (dB)	-18.80	-5.96	-8.56	-15.63	19.6
PPS(min,max,std): 27,36,2.06	vvL (dB)	-47.08	-10.33	-21.59	-17.98	229.
Prof: 563 to 69162, NumProf(t/r): 68599/17069	ppN (m/s)	-12.56	12.46	-0.02	4.16	
ProcTime/Recs: 17:08:51-17:17:03/34138-51206	ppT (m/s)	-99.20	98.44	-0.18	32.85	
MxACQtime: 33ms; DRate: 194.3KB/s; Flags: 0, 0, 0	hh/vv (dB)	-NaN	61.12	-NaN	50.34	-212
Pulse: 275ns, IFfilt: 5.0MHz; ppPol: HH HV VV	vh/hh (dB)	-NaN	12.18	-9.02	1.17	1046
TxPol: HHVV, PRF: 20 10 20 10 kHz	hv/vv (dB)	-NaN	-2.67	-19.11	-15.84	212.
Range: Delay 75m, Spacing 15m, Gates 100	hn/jmp (dB)	-2.03	2.25	0.16	-8.49	13.7
Ave. Pulses: 84, Rng/Prof Aspect@90m/s: 5.8	vn/jmp (dB)	-2.26	2.38	0.16	-8.40	13.9