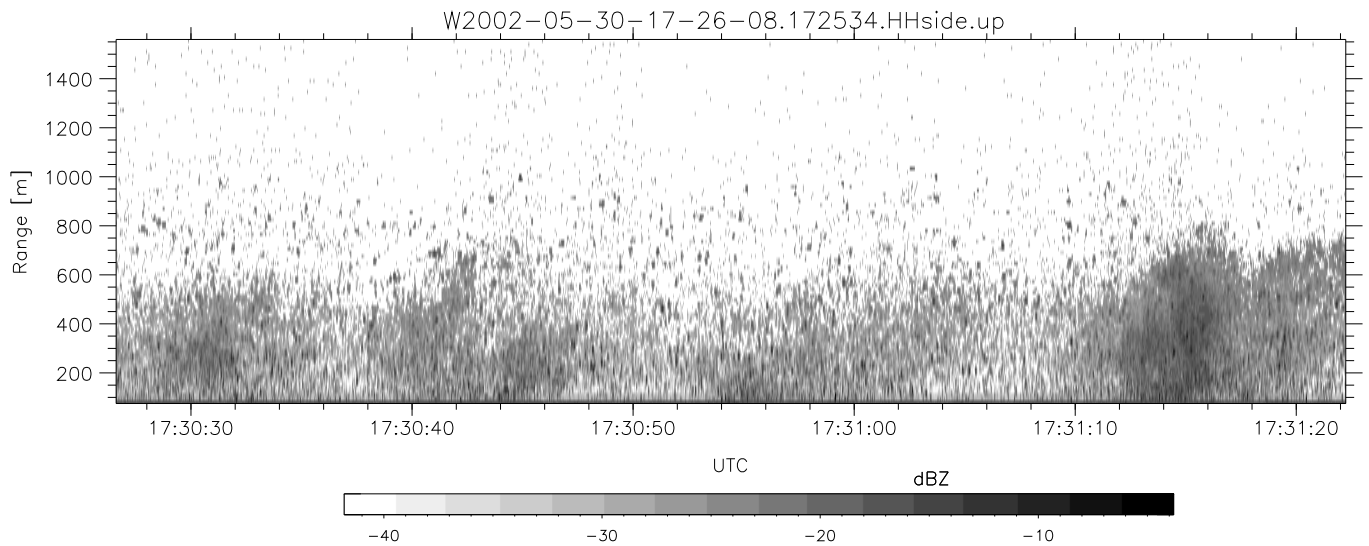
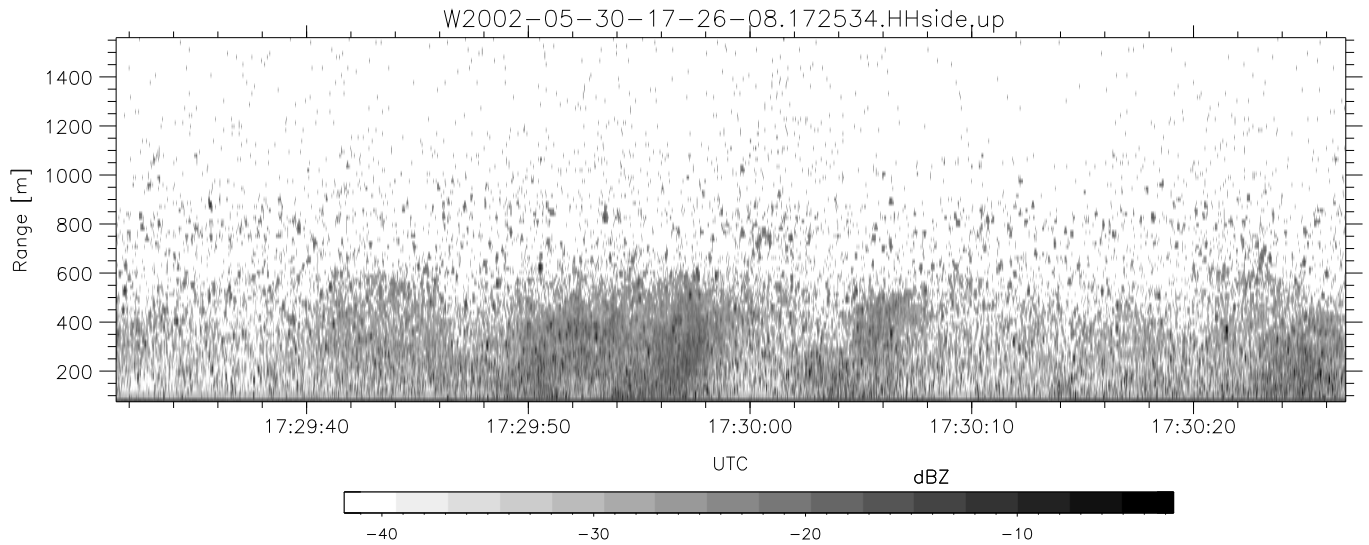
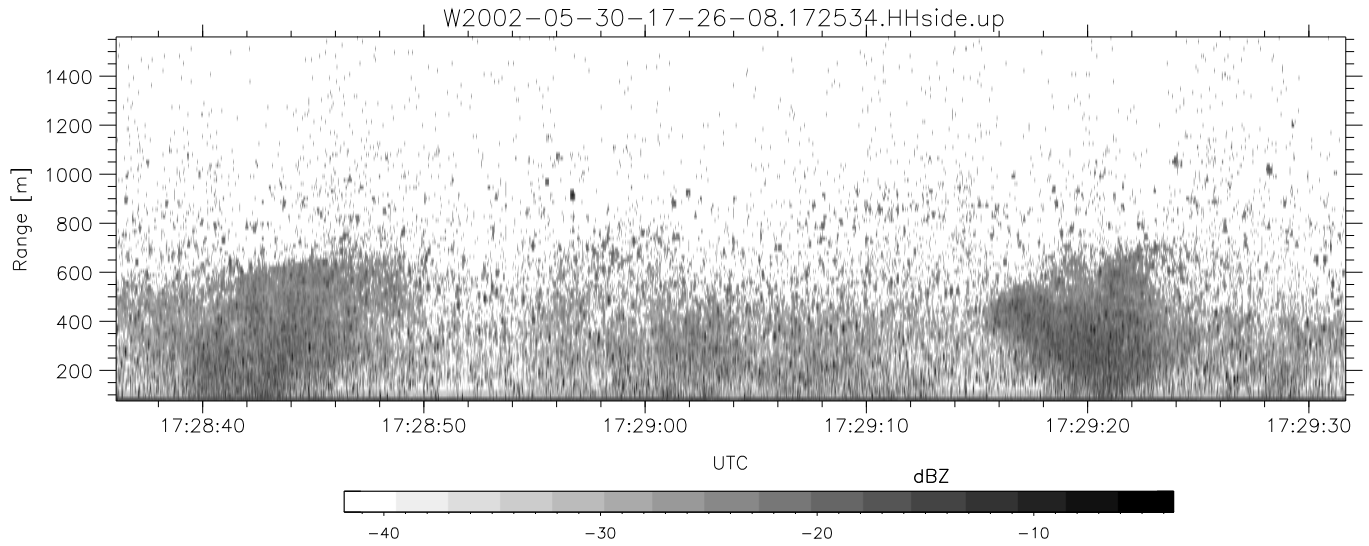


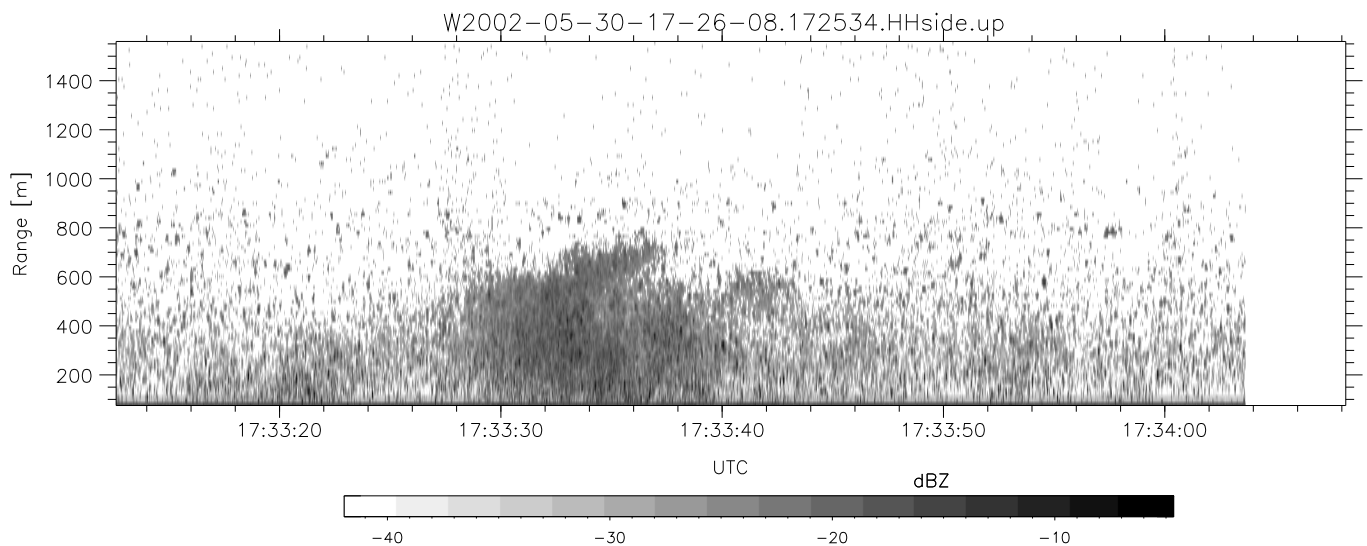
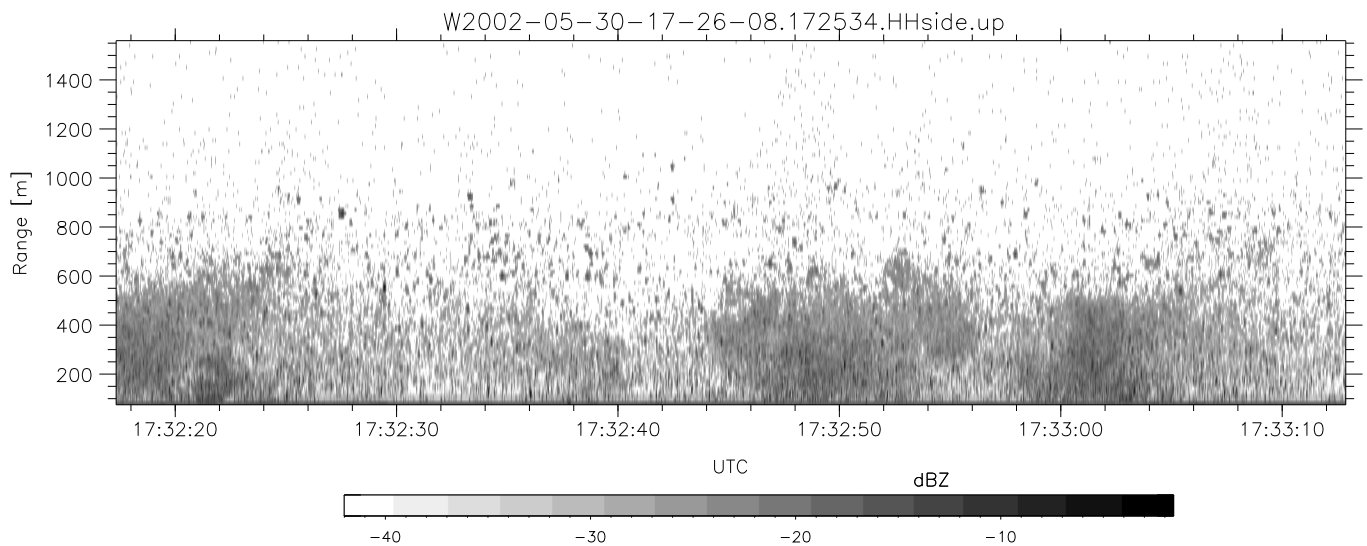
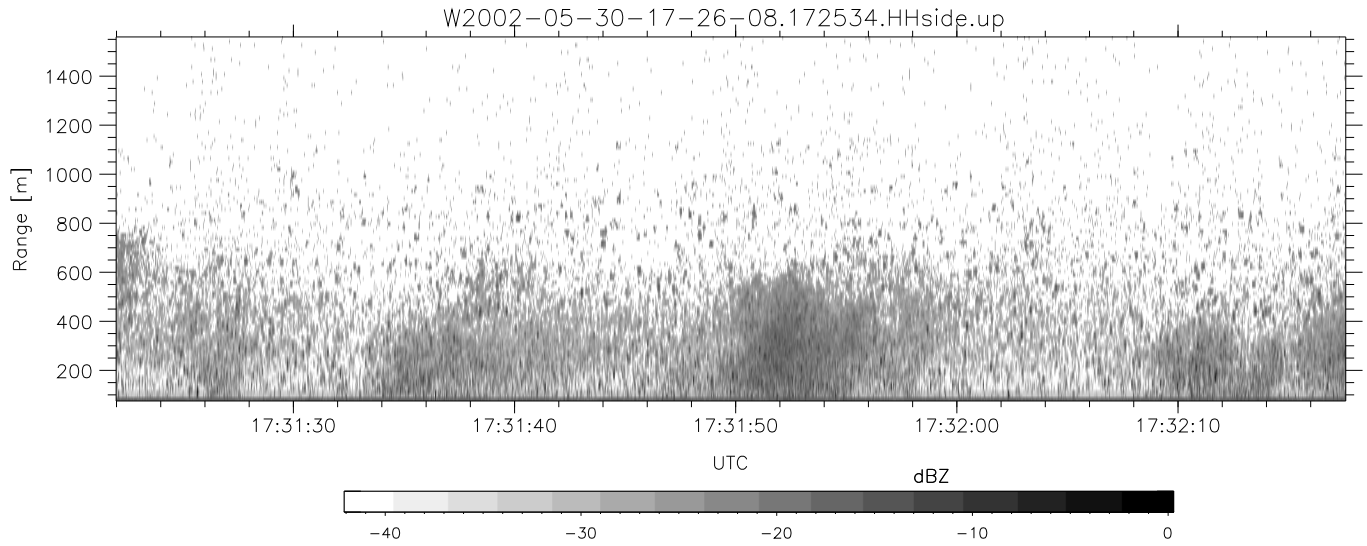
IHOP 2002 (dual-antenna config, modes 1,3,4,7) Data (cal: 49.0,50.0)

	Min	Max	Mean	Std	Varc%
W2002-05-30-17-26-08 - PPMAG4					
IRIG:1,UTC: 17:25:34.81 to 17:52:26.11, Dur: 1612s					
TimeLngth: 1611.30s, TimeInt: 29ms (34.2pps)					
TimeCor=-13.0s, DSPDif(mn,mx,min):30,28,13792					
PPS(min,max,std): 0,36,6.14					
Prof: 3 to 55052, NumProf(t/r): 55049/17069					
ProcTime/Recs: 17:25:34-17:34:03/0-17068					
MxACQtime: 33ms; DRate: 191.2KB/s; Flags: 0, 0, 0					
Pulse: 275ns, IFfilt: 5.0MHz; ppPol: HH HV VV					
TxPol: HHVV, PRF: 20 10 20 10 kHz					
Range: Delay 75m, Spacing 15m, Gates 100					
Ave. Pulses: 84, Rng/Prof Aspect@90m/s: 5.7					
hhN (dB)	-67.34	-63.44	-65.16	-75.23	9.8
vvN (dB)	-68.62	-63.12	-66.23	-72.71	22.5
hhL (dB)	-16.99	-6.00	-9.41	-14.92	28.2
vvL (dB)	-63.96	-18.33	-30.24	-27.43	191.
ppN (m/s)	-12.39	12.28	0.06	4.14	
ppT (m/s)	-97.89	97.01	0.45	32.71	
hh/vv (dB)	-NaN	60.74	9.21	37.87	7347
vh/hh (dB)	-NaN	-25.16	-36.41	-31.80	289.
hv/vv (dB)	-33.52	1.64	-8.61	-6.77	152.
hnjmp (dB)	-1.94	2.42	0.16	-8.43	13.8
vnjmp (dB)	-2.11	2.58	0.14	-8.43	13.9



IHOP 2002 (dual-antenna config, modes 1,3,4,7) Data (cal: 49.0,50.0)

	Min	Max	Mean	Std	Varc%
W2002-05-30-17-26-08 - PPMAG4					
IRIG:1,UTC: 17:25:34.81 to 17:52:26.11, Dur: 1612s	hhN (dB)	-67.34 -63.44	-65.16	-75.23	9.8
TimeLngth: 1611.30s, TimeInt: 29ms (34.2pps)	vvN (dB)	-68.62 -63.12	-66.23	-72.71	22.5
TimeCor=-13.0s, DSPDif(mn,mx,min):30,28,13792	hhL (dB)	-16.99 -6.00	-9.41	-14.92	28.2
PPS(min,max,std): 0,36,6.14	vvL (dB)	-63.96 -18.33	-30.24	-27.43	191.
Prof: 3 to 55052, NumProf(t/r): 55049/17069	ppN (m/s)	-12.39 12.28	0.06	4.14	
ProcTime/Recs: 17:25:34-17:34:03/0-17068	ppT (m/s)	-97.89 97.01	0.45	32.71	
MxACQtime: 33ms; DRate: 191.2KB/s; Flags: 0, 0, 0	hh/vv (dB)	-NaN 60.74	9.21	37.87	7347
Pulse: 275ns, IFfilt: 5.0MHz; ppPol: HH HV VV	vh/hh (dB)	-NaN -25.16	-36.41	-31.80	289.
TxPol: HHVV, PRF: 20 10 20 10 kHz	hv/vv (dB)	-33.52 1.64	-8.61	-6.77	152.
Range: Delay 75m, Spacing 15m, Gates 100	hn/jmp (dB)	-1.94 2.42	0.16	-8.43	13.8
Ave. Pulses: 84, Rng/Prof Aspect@90m/s: 5.7	vn/jmp (dB)	-2.11 2.58	0.14	-8.43	13.9



IHOP 2002 (dual-antenna config, modes 1,3,4,7) Data (cal: 49.0,50.0)

W2002-05-30-17-26-08 - PPMAG4
 IRIG:1,UTC: 17:25:34.81 to 17:52:26.11, Dur: 1612s
 TimeLngth: 1611.30s, TimeInt: 29ms (34.2pps)
 TimeCor=-13.0s, DSPDif(mn,mx,min):30,28,13792
 PPS(min,max,std): 0,36,6.14
 Prof: 3 to 55052, NumProf(t/r): 55049/17069
 ProcTime/Recs: 17:25:34-17:34:03/0-17068
 MxACQtime: 33ms; DRate: 191.2KB/s; Flags: 0, 0, 0
 Pulse: 275ns, IFilt: 5.0MHz; ppPol: HH HV VV
 TxPol: HHVV, PRF: 20 10 20 10 kHz
 Range: Delay 75m, Spacing 15m, Gates 100
 Ave. Pulses: 84, Rng/Prof Aspect@90m/s: 5.7

	Min	Max	Mean	Std	Varc%
hhN(dB)	-67.34	-63.44	-65.16	-75.23	9.8
vvN(dB)	-68.62	-63.12	-66.23	-72.71	22.5
hhL(dB)	-16.99	-6.00	-9.41	-14.92	28.2
vvL(dB)	-63.96	-18.33	-30.24	-27.43	191.
ppN(m/s)	-12.39	12.28	0.06	4.14	
ppT(m/s)	-97.89	97.01	0.45	32.71	
hh/vv(dB)	-NaN	60.74	9.21	37.87	7347
vh/hh(dB)	-NaN	-25.16	-36.41	-31.80	289.
hv/vv(dB)	-33.52	1.64	-8.61	-6.77	152.
hh_jmp(dB)	-1.94	2.42	0.16	-8.43	13.8
vv_jmp(dB)	-2.11	2.58	0.14	-8.43	13.9