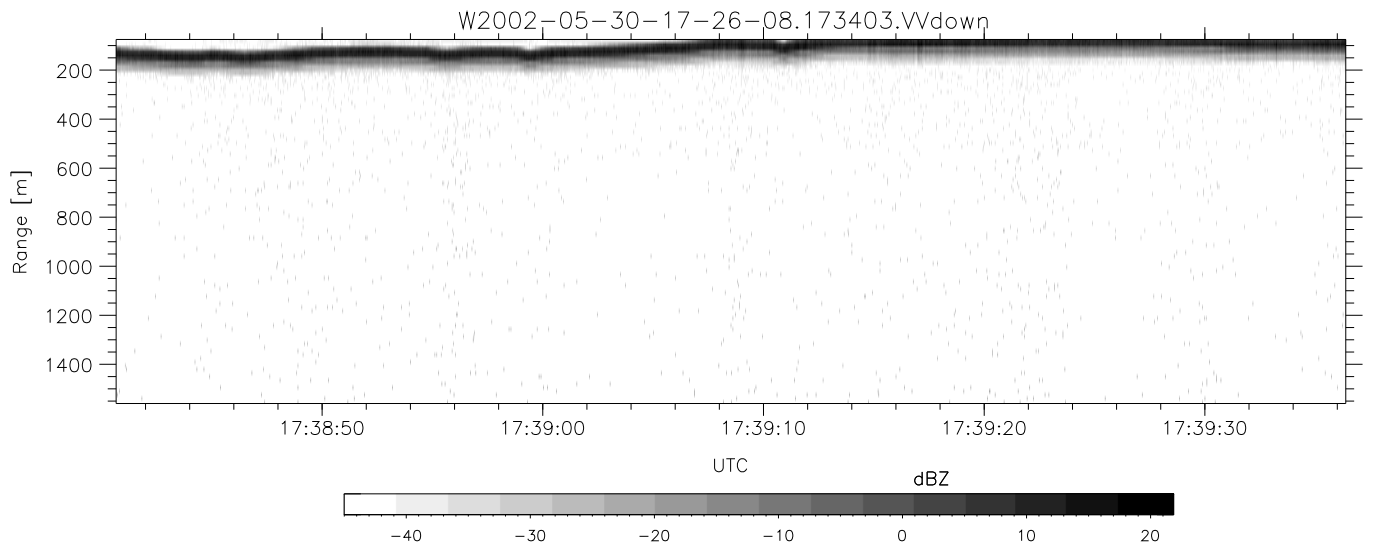
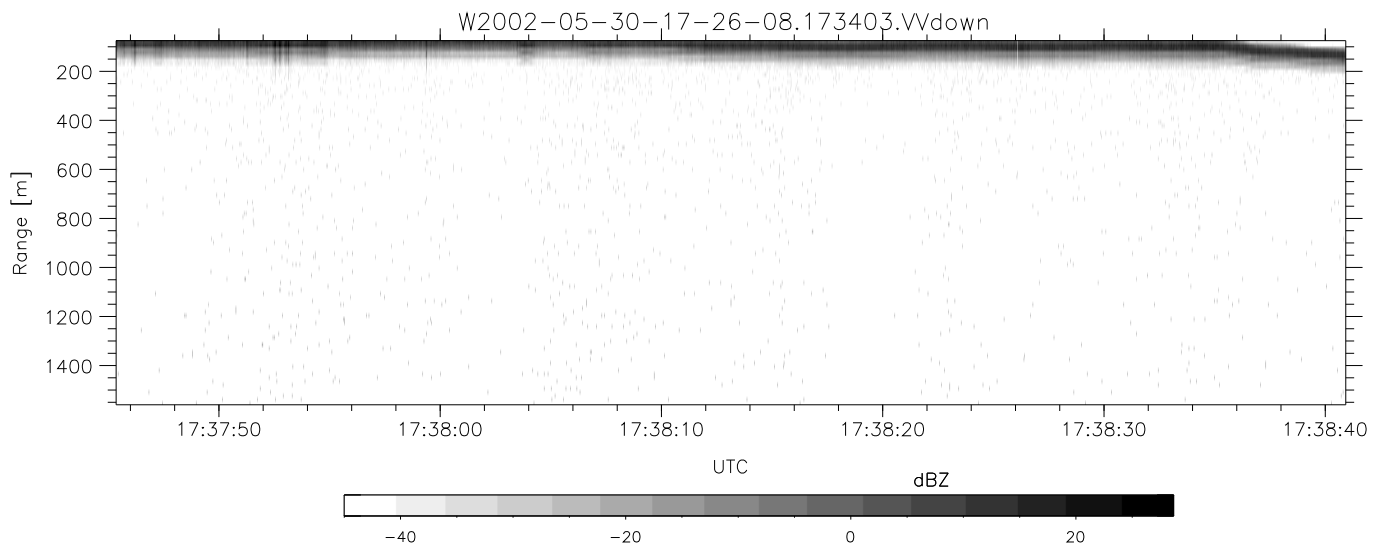
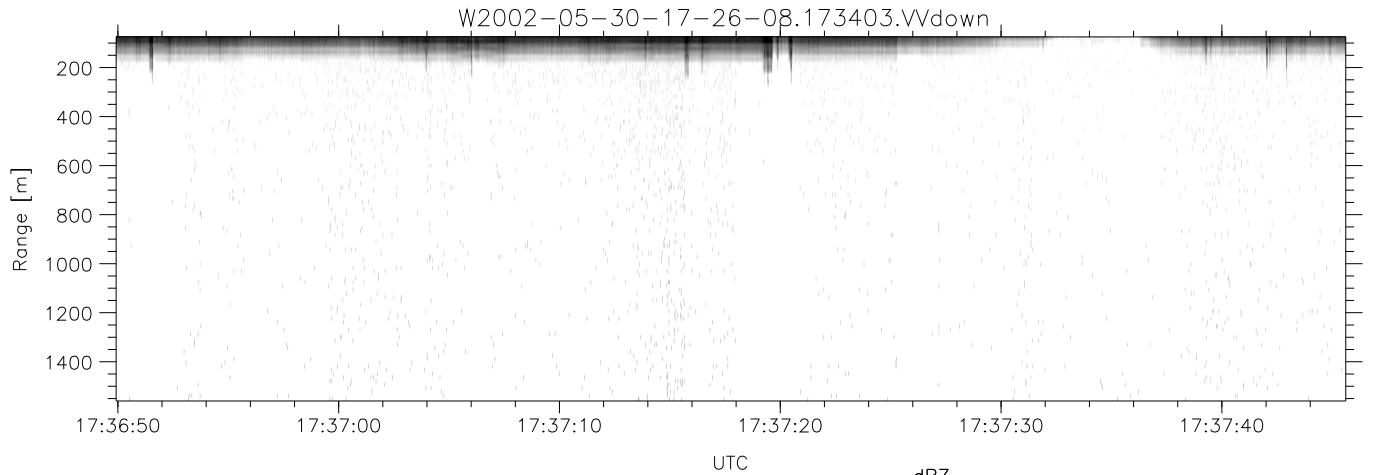


IHOP 2002 (dual-antenna config, modes 1,3,4,7) Data (cal: 49.0,50.0)

W2002-05-30-17-26-08 - PPMAG4  
 IRIG:1,UTC: 17:25:34.81 to 17:52:26.11, Dur: 1612s  
 TimeLngth: 1611.30s, TimeInt: 29ms (34.2pps)  
 TimeCor=-13.0s, DSPDif(mn,mx,min):29,28,351  
 PPS(min,max,std): 24,36,2.20  
 Prof: 3 to 55052, NumProf(t/r): 55049/17069  
 ProcTime/Recs: 17:34:03-17:42:17/17069-34137  
 MxACQtime: 33ms; DRate: 191.2KB/s; Flags: 0, 0, 0  
 Pulse: 275ns, IFfilt: 5.0MHz; ppPol: HH HV VV  
 TxPol: HHVV, PRF: 20 10 20 10 kHz  
 Range: Delay 75m, Spacing 15m, Gates 100  
 Ave. Pulses: 84, Rng/Prof Aspect@90m/s: 5.7

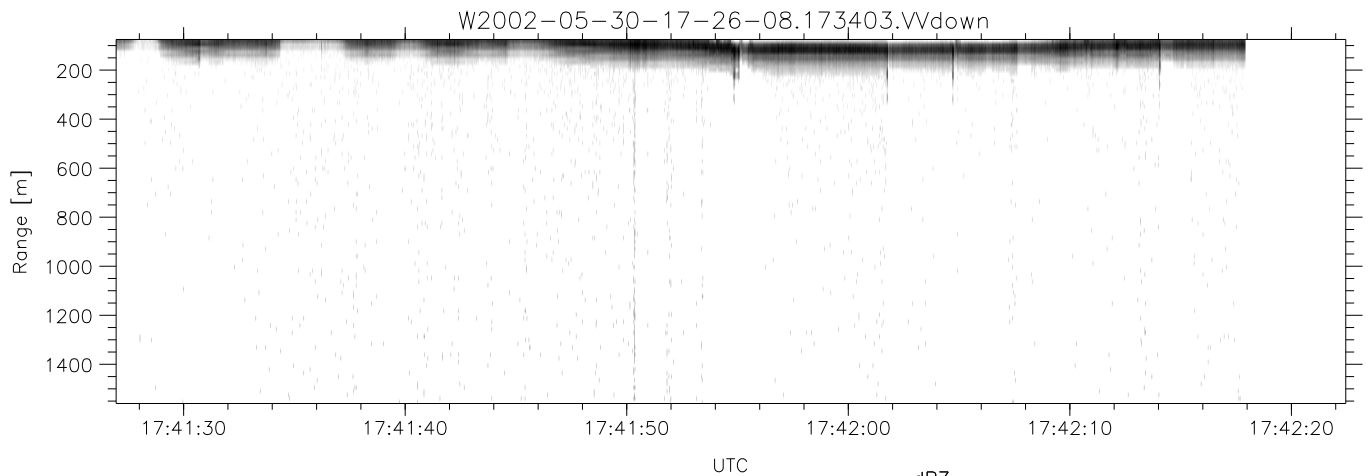
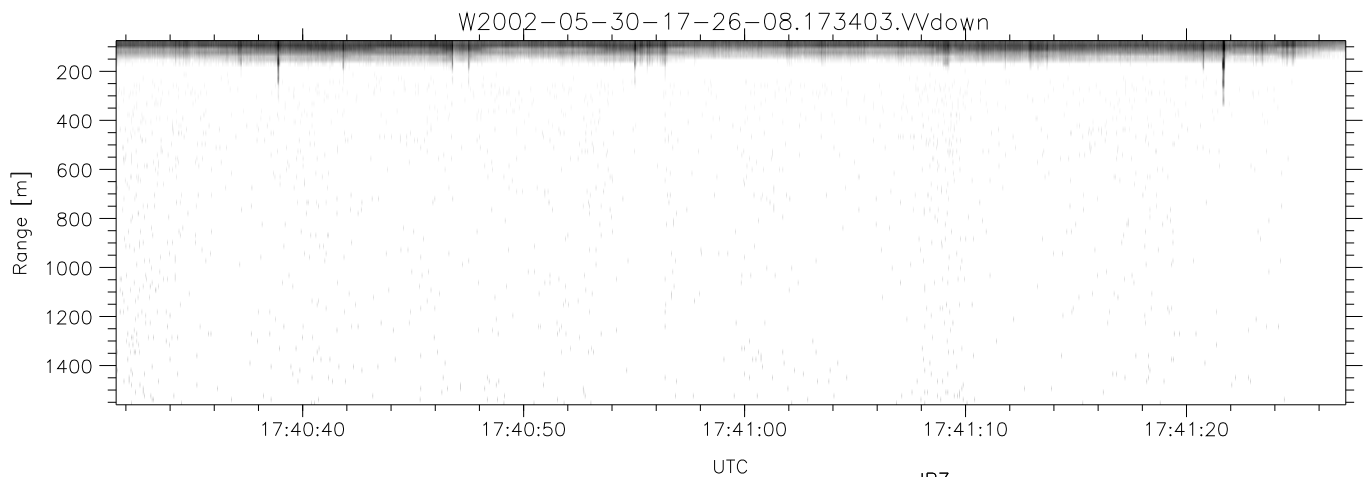
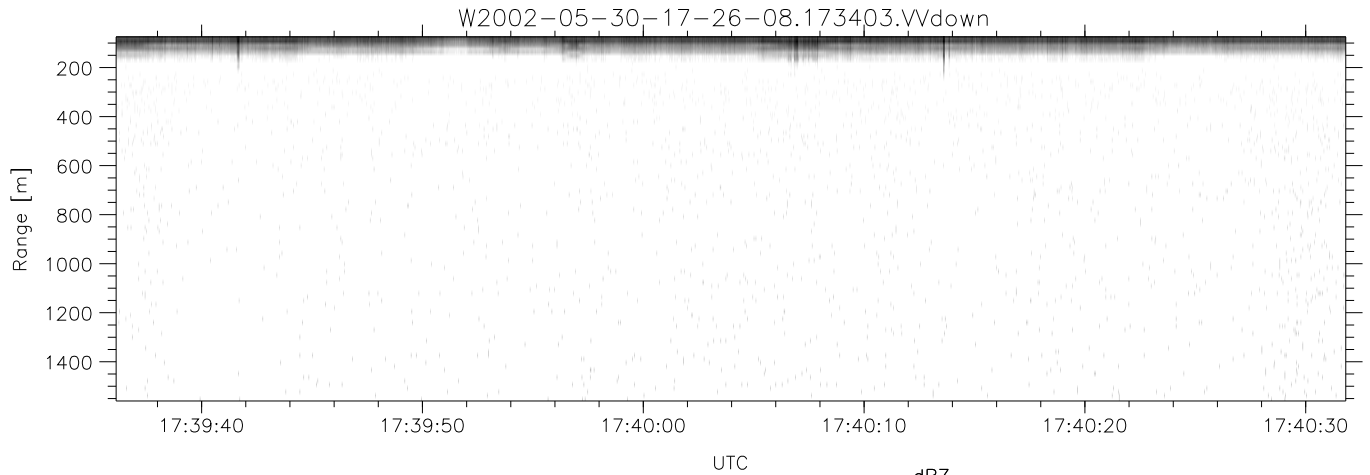
	Min	Max	Mean	Std	Varc%
hhN(dB)	-66.85	-63.67	-65.25	-75.36	9.7
vvN(dB)	-68.51	-61.41	-65.44	-70.77	29.3
hhL(dB)	-16.55	-6.84	-10.54	-16.28	26.7
vvL(dB)	-56.82	-15.17	-25.00	-22.94	160.
ppN(m/s)	-12.56	12.44	0.00	4.15	
ppT(m/s)	-99.23	98.26	0.00	32.82	
hh/vv(dB)	-NaN	56.66	-NaN	39.25	-107
vh/hh(dB)	-NaN	-22.95	-35.26	-29.42	384.
hv/vv(dB)	-37.54	1.06	-16.92	-12.05	307.
hnjmp(dB)	-2.33	2.28	-0.08	-8.72	13.6
vnjmp(dB)	-2.68	2.48	-0.08	-8.60	14.0



IHOP 2002 (dual-antenna config, modes 1,3,4,7) Data (cal: 49.0,50.0)

W2002-05-30-17-26-08 - PPMAG4  
 IRIG:1,UTC: 17:25:34.81 to 17:52:26.11, Dur: 1612s  
 TimeLngth: 1611.30s, TimeInt: 29ms (34.2pps)  
 TimeCor=-13.0s, DSPDif(mn,mx,min):29,28,351  
 PPS(min,max,std): 24,36,2.20  
 Prof: 3 to 55052, NumProf(t/r): 55049/17069  
 ProcTime/Recs: 17:34:03-17:42:17/17069-34137  
 MxACQtime: 33ms; DRate: 191.2KB/s; Flags: 0, 0, 0  
 Pulse: 275ns, IFfilt: 5.0MHz; ppPol: HH HV VV  
 TxPol: HHVV, PRF: 20 10 20 10 kHz  
 Range: Delay 75m, Spacing 15m, Gates 100  
 Ave. Pulses: 84, Rng/Prof Aspect@90m/s: 5.7

	Min	Max	Mean	Std	Varc%
hhN(dB)	-66.85	-63.67	-65.25	-75.36	9.7
vvN(dB)	-68.51	-61.41	-65.44	-70.77	29.3
hhL(dB)	-16.55	-6.84	-10.54	-16.28	26.7
vvL(dB)	-56.82	-15.17	-25.00	-22.94	160.
ppN(m/s)	-12.56	12.44	0.00	4.15	
ppT(m/s)	-99.23	98.26	0.00	32.82	
hh/vv(dB)	-NaN	56.66	-NaN	39.25	-107
vh/hh(dB)	-NaN	-22.95	-35.26	-29.42	384.
hv/vv(dB)	-37.54	1.06	-16.92	-12.05	307.
hnjmp(dB)	-2.33	2.28	-0.08	-8.72	13.6
vnjmp(dB)	-2.68	2.48	-0.08	-8.60	14.0



IHOP 2002 (dual-antenna config, modes 1,3,4,7) Data (cal: 49.0,50.0)

W2002-05-30-17-26-08 - PPMAG4  
 IRIG:1,UTC: 17:25:34.81 to 17:52:26.11, Dur: 1612s  
 TimeLngth: 1611.30s, TimeInt: 29ms (34.2pps)  
 TimeCor=-13.0s, DSPDif(mn,mx,min):29,28,351  
 PPS(min,max,std): 24,36,2.20  
 Prof: 3 to 55052, NumProf(t/r): 55049/17069  
 ProcTime/Recs: 17:34:03-17:42:17/17069-34137  
 MxACQtime: 33ms; DRate: 191.2KB/s; Flags: 0, 0, 0  
 Pulse: 275ns, IFfilt: 5.0MHz; ppPol: HH HV VV  
 TxPol: HHVV, PRF: 20 10 20 10 kHz  
 Range: Delay 75m, Spacing 15m, Gates 100  
 Ave. Pulses: 84, Rng/Prof Aspect@90m/s: 5.7

	Min	Max	Mean	Std	Varc%
hhN(dB)	-66.85	-63.67	-65.25	-75.36	9.7
vvN(dB)	-68.51	-61.41	-65.44	-70.77	29.3
hhL(dB)	-16.55	-6.84	-10.54	-16.28	26.7
vvL(dB)	-56.82	-15.17	-25.00	-22.94	160.
ppN(m/s)	-12.56	12.44	0.00	4.15	
ppT(m/s)	-99.23	98.26	0.00	32.82	
hh/vv(dB)	-NaN	56.66	-NaN	39.25	-107
vh/hh(dB)	-NaN	-22.95	-35.26	-29.42	384.
hv/vv(dB)	-37.54	1.06	-16.92	-12.05	307.
hnjmp(dB)	-2.33	2.28	-0.08	-8.72	13.6
vnjmp(dB)	-2.68	2.48	-0.08	-8.60	14.0