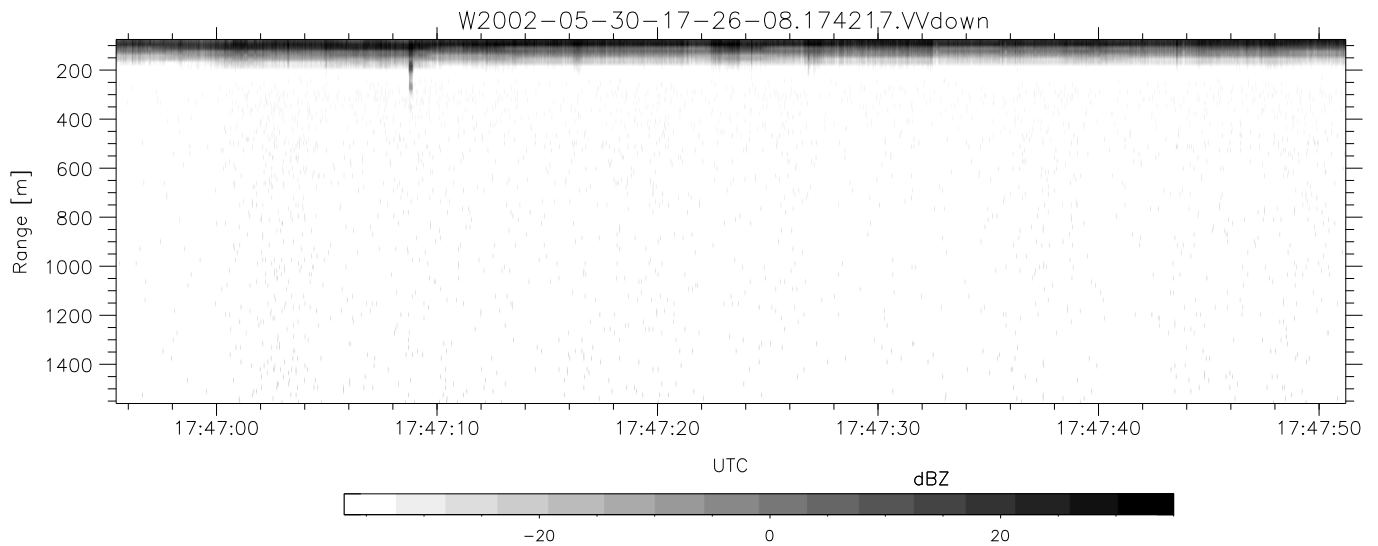
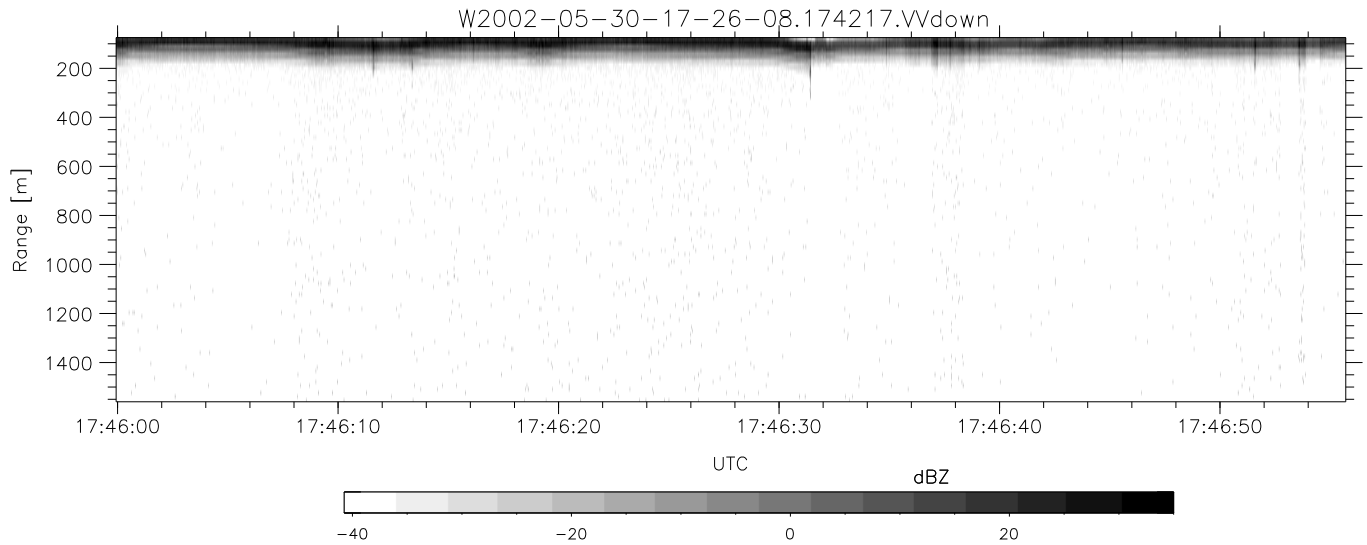
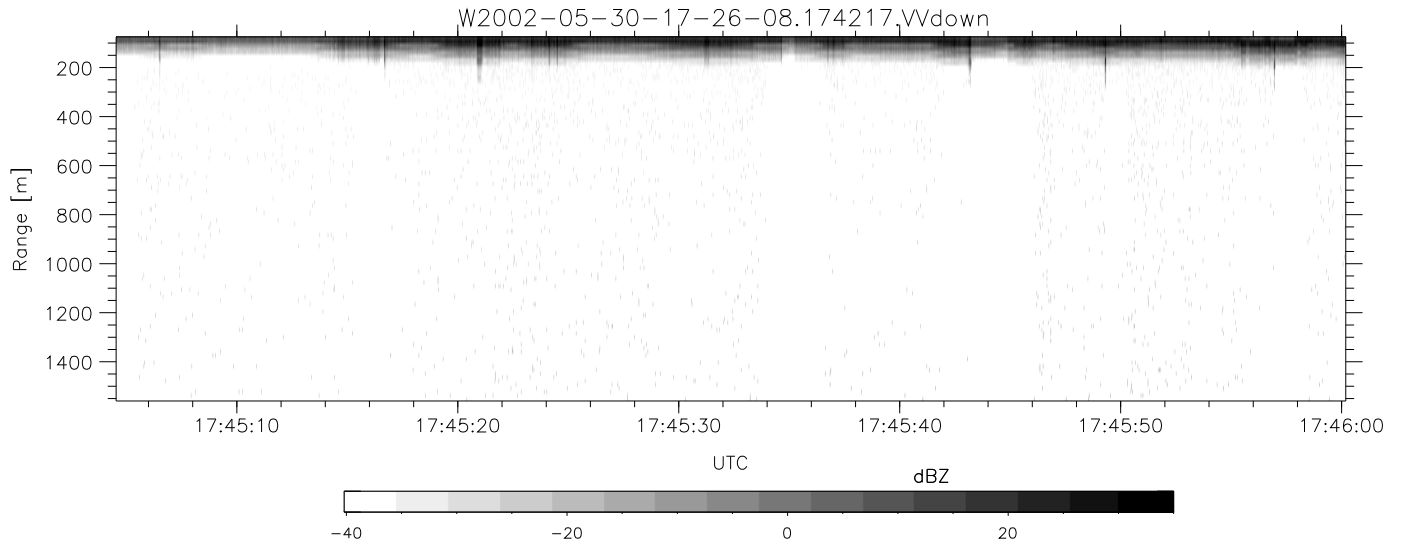


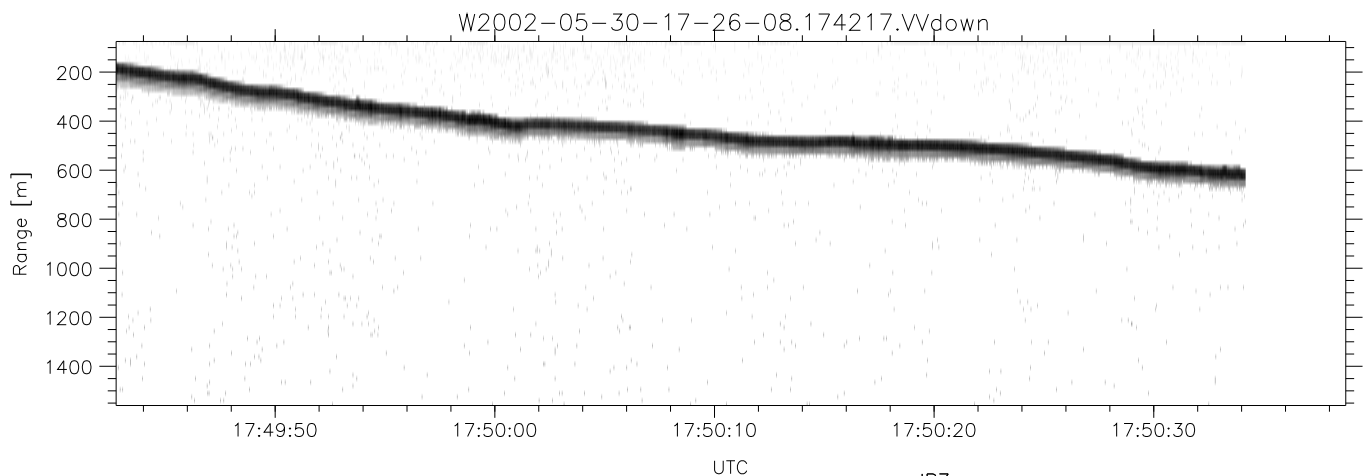
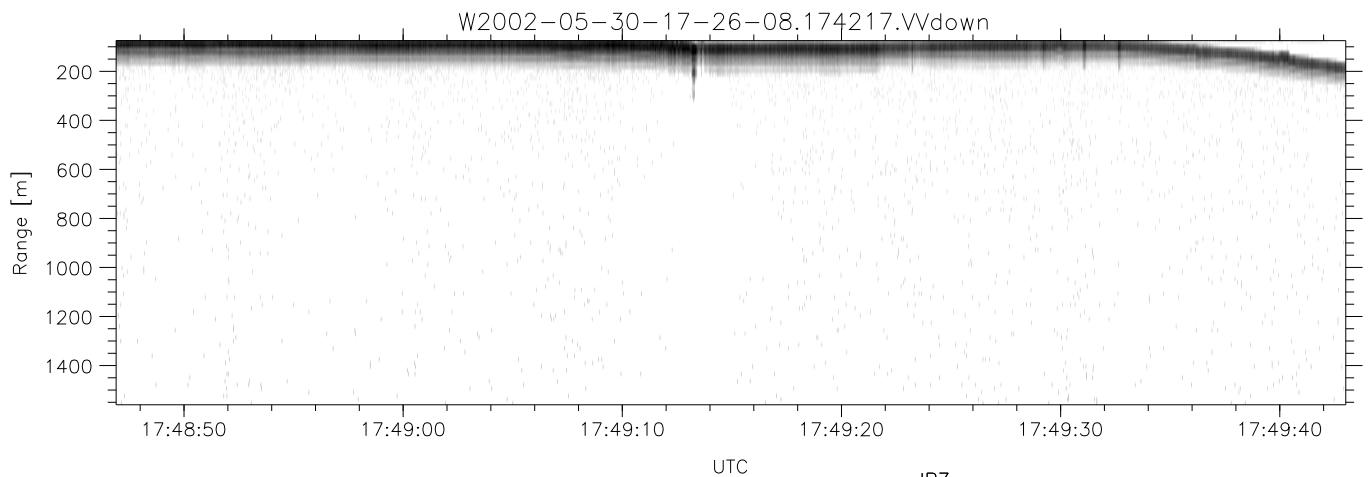
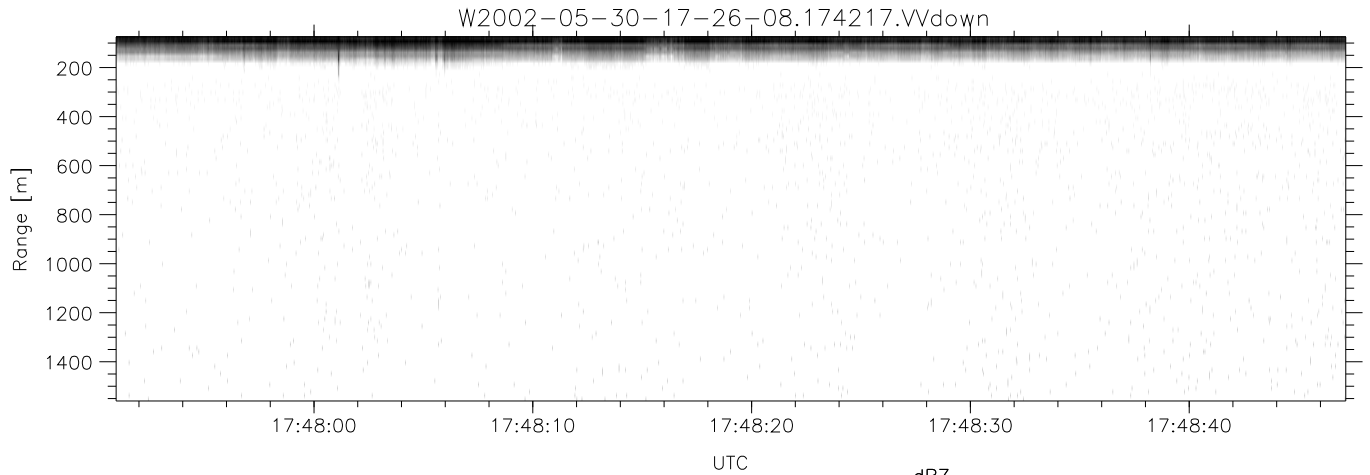
IHOP 2002 (dual-antenna config, modes 1,3,4,7) Data (cal: 49.0,50.0)

W2002-05-30-17-26-08 - PPMAG4	Min	Max	Mean	Std	Varc%	
IRIG:1,UTC: 17:25:34.81 to 17:52:26.11, Dur: 1612s	hhN(dB)	-66.91	-63.50	-65.35	-75.42	9.8
TimeLngth: 1611.30s, TimeInt: 29ms (34.2pps)	vvN(dB)	-68.78	-62.16	-64.98	-71.46	22.5
TimeCor=-13.0s, DSPDif(mn,mx,min):28,28,307	hhL(dB)	-17.02	-7.60	-11.31	-17.44	24.4
PPS(min,max,std): 23,36,2.29	vvL(dB)	-58.88	-18.53	-24.90	-25.53	86.4
Prof: 3 to 55052, NumProf(t/r): 55049/17069	ppN(m/s)	-12.36	12.85	-0.02	4.17	
ProcTime/Recs: 17:42:17-17:50:34/34138-51206	ppT(m/s)	-97.63	101.52	-0.18	32.94	
MxACQtime: 33ms; DRate: 191.2KB/s; Flags: 0, 0, 0	hh/vv(dB)	-NaN	60.19	-NaN	56.61	-253
Pulse: 275ns, IFfilt: 5.0MHz; ppPol: HH HV VV	vh/hh(dB)	-NaN	-18.50	-33.26	-28.67	288.
TxPol: HHVV, PRF: 20 10 20 10 kHz	hv/vv(dB)	-40.31	-3.57	-19.37	-17.01	172.
Range: Delay 75m, Spacing 15m, Gates 100	hnjmp(dB)	-2.19	2.56	0.15	-8.44	13.8
Ave. Pulses: 84, Rng/Prof Aspect@90m/s: 5.7	vnjmp(dB)	-1.99	2.24	0.15	-8.42	13.9



IHOP 2002 (dual-antenna config, modes 1,3,4,7) Data (cal: 49.0,50.0)

	Min	Max	Mean	Std	Varc%
W2002-05-30-17-26-08 - PPMAG4					
IRIG:1,UTC: 17:25:34.81 to 17:52:26.11, Dur: 1612s	hhN (dB)	-66.91 -63.50	-65.35	-75.42	9.8
TimeLngth: 1611.30s, TimeInt: 29ms (34.2pps)	vvN (dB)	-68.78 -62.16	-64.98	-71.46	22.5
TimeCor=-13.0s, DSPDif(mn,mx,min):28,28,307	hhL (dB)	-17.02 -7.60	-11.31	-17.44	24.4
PPS(min,max,std): 23,36,2.29	vvL (dB)	-58.88 -18.53	-24.90	-25.53	86.4
Prof: 3 to 55052, NumProf(t/r): 55049/17069	ppN (m/s)	-12.36 12.85	-0.02	4.17	
ProcTime/Recs: 17:42:17-17:50:34/34138-51206	ppT (m/s)	-97.63 101.52	-0.18	32.94	
MxACQtime: 33ms; DRate: 191.2KB/s; Flags: 0, 0, 0	hh/vv (dB)	-NaN 60.19	-NaN	56.61	-253
Pulse: 275ns, IFfilt: 5.0MHz; ppPol: HH HV VV	vh/hh (dB)	-NaN -18.50	-33.26	-28.67	288.
TxPol: HHVV, PRF: 20 10 20 10 kHz	hv/vv (dB)	-40.31 -3.57	-19.37	-17.01	172.
Range: Delay 75m, Spacing 15m, Gates 100	hnjmp (dB)	-2.19 2.56	0.15	-8.44	13.8
Ave. Pulses: 84, Rng/Prof Aspect@90m/s: 5.7	vnjmp (dB)	-1.99 2.24	0.15	-8.42	13.9



IHOP 2002 (dual-antenna config, modes 1,3,4,7) Data (cal: 49.0,50.0)

W2002-05-30-17-26-08 - PPMAG4
 IRIG:1,UTC: 17:25:34.81 to 17:52:26.11, Dur: 1612s
 TimeLngth: 1611.30s, TimeInt: 29ms (34.2pps)
 TimeCor=-13.0s, DSPDif(mn,mx,min):28,28,307
 PPS(min,max,std): 23,36,2.29
 Prof: 3 to 55052, NumProf(t/r): 55049/17069
 ProcTime/Recs: 17:42:17-17:50:34/34138-51206
 MxACQtime: 33ms; DRate: 191.2KB/s; Flags: 0, 0, 0
 Pulse: 275ns, IFfilt: 5.0MHz; ppPol: HH HV VV
 TxPol: HHVV, PRF: 20 10 20 10 kHz
 Range: Delay 75m, Spacing 15m, Gates 100
 Ave. Pulses: 84, Rng/Prof Aspect@90m/s: 5.7

	Min	Max	Mean	Std	Varc%
hhN(dB)	-66.91	-63.50	-65.35	-75.42	9.8
vvN(dB)	-68.78	-62.16	-64.98	-71.46	22.5
hhL(dB)	-17.02	-7.60	-11.31	-17.44	24.4
vvL(dB)	-58.88	-18.53	-24.90	-25.53	86.4
ppN(m/s)	-12.36	12.85	-0.02	4.17	
ppT(m/s)	-97.63	101.52	-0.18	32.94	
hh/vv(dB)	-NaN	60.19	-NaN	56.61	-253
vh/hh(dB)	-NaN	-18.50	-33.26	-28.67	288.
hv/vv(dB)	-40.31	-3.57	-19.37	-17.01	172.
hnjmp(dB)	-2.19	2.56	0.15	-8.44	13.8
vnjmp(dB)	-1.99	2.24	0.15	-8.42	13.9