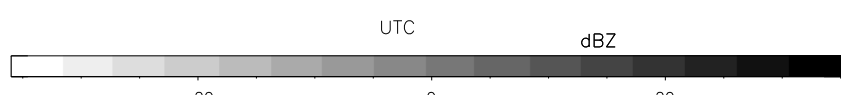
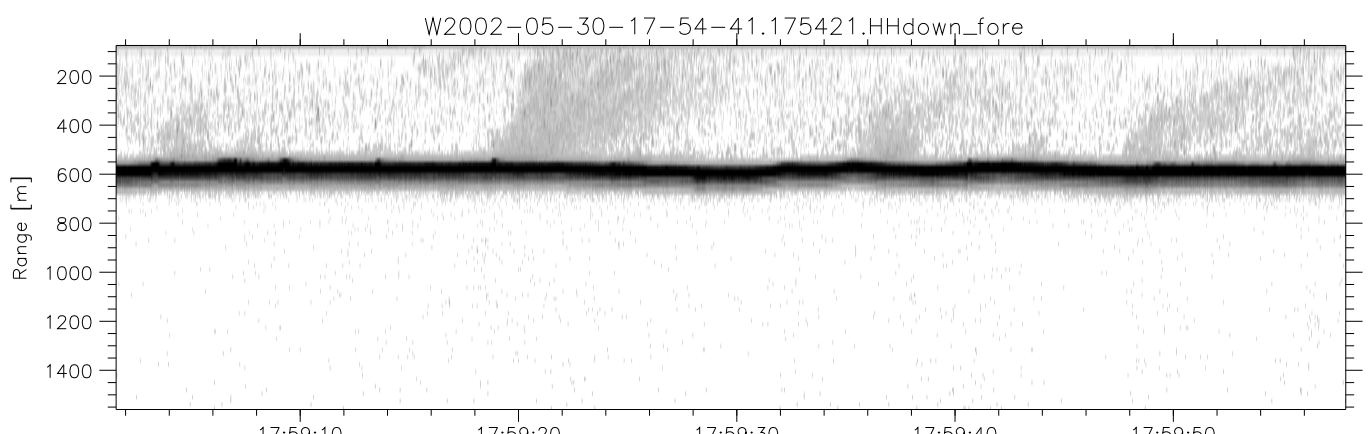
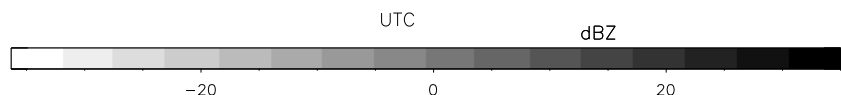
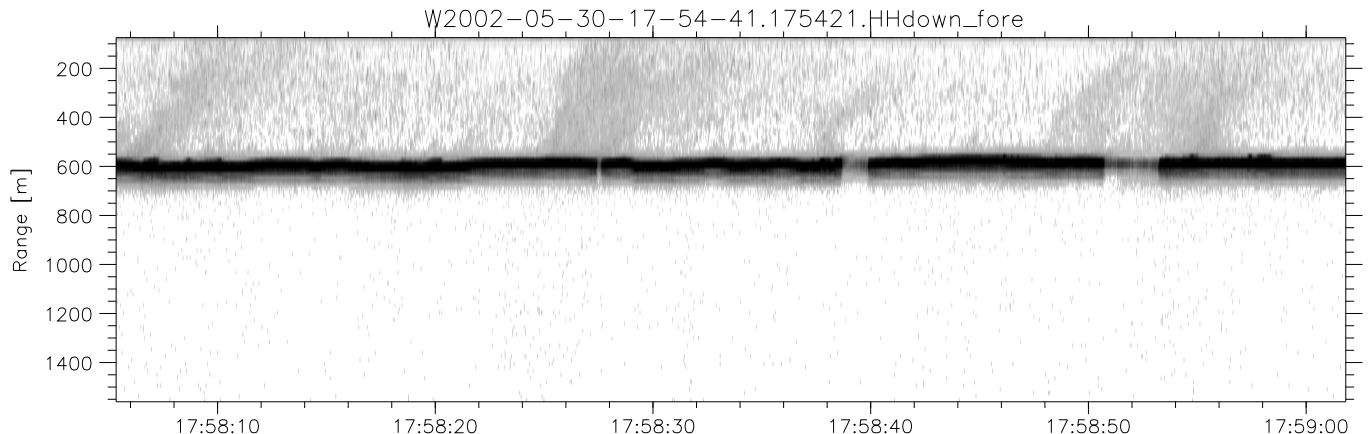
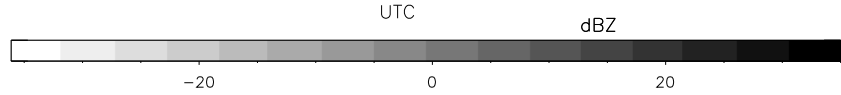
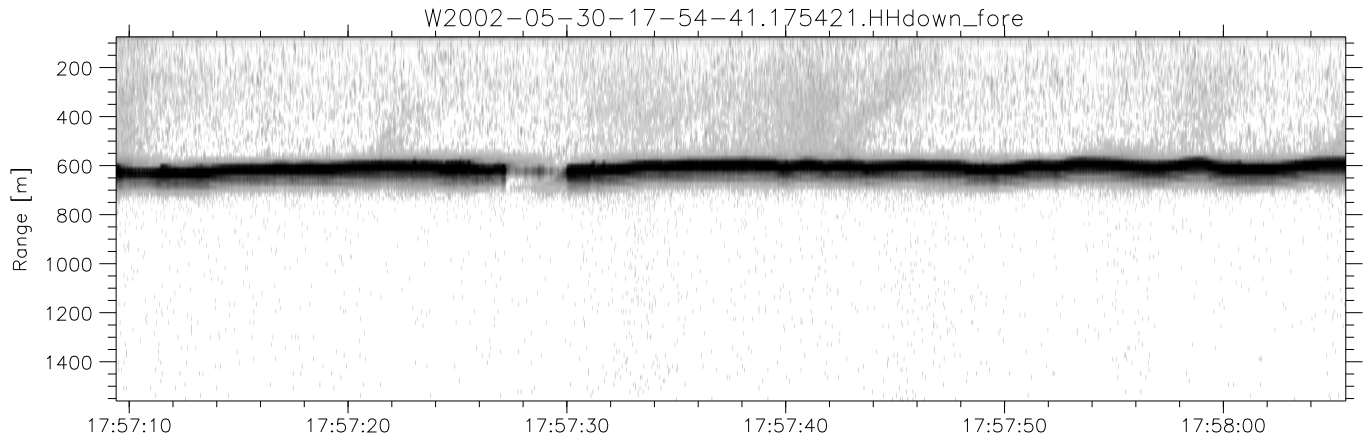


IHOP 2002 (dual-antenna config, modes 1,3,4,7) Data (cal: 55.0,50.0)

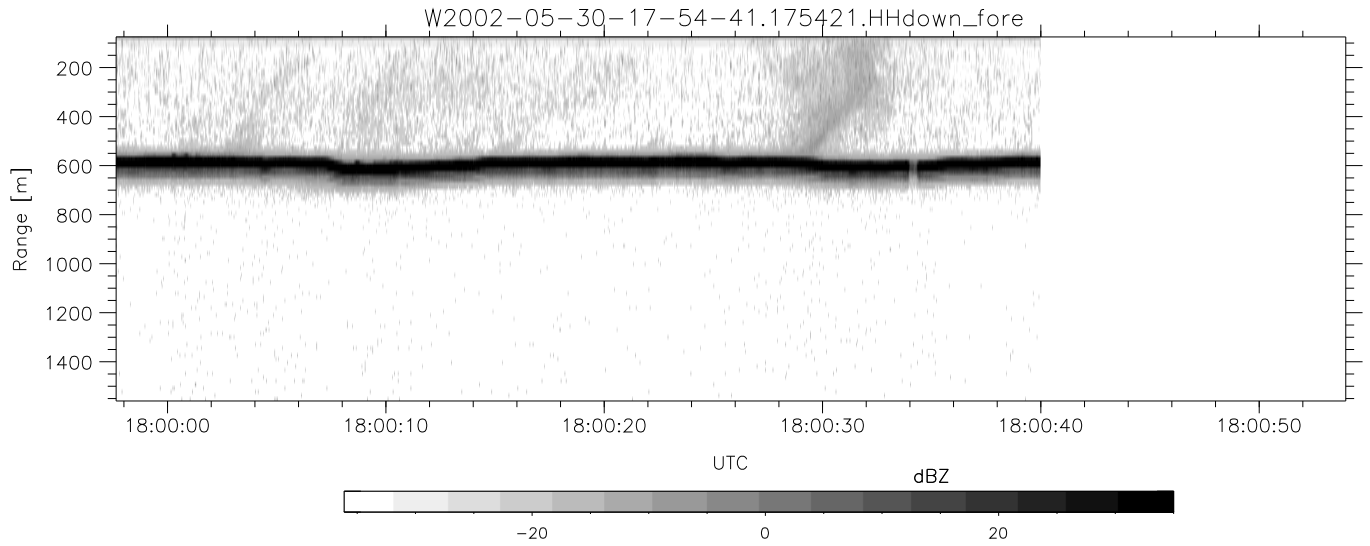
W2002-05-30-17-54-41 - PPMAG4						
IRIG:1,UTC: 17:54:21.70 to 18:00:39.97, Dur: 378s	hhN(dB)	Min	Max	Mean	Std	Varc%
TimeLngth: 378.27s, TimeInt: 29ms (34.3pps)	vvN(dB)	-66.94	-63.76	-65.15	-75.23	9.8
TimeCor=-13.0s, DSPDif(mn,mx,min):29,28,289	hhL(dB)	-67.66	-62.42	-64.39	-72.59	15.1
PPS(min,max,std): 26,36,2.09	vvL(dB)	-18.84	-9.97	-12.95	-19.54	21.9
Prof: 72 to 13062, NumProf(t/r): 12990/12990	ppN(m/s)	-42.58	-17.74	-21.13	-24.95	41.4
MxACQtime: 33ms; DRate: 192.2KB/s; Flags: 0, 0, 0	ppT(m/s)	-12.63	12.12	-0.01	4.17	
Pulse: 275ns, IFfilt: 5.0MHz; ppPol: HH HV VV	hh/vv(dB)	-99.79	95.73	-0.07	32.91	
TxPol: HHVV, PRF: 20 10 20 10 kHz	vh/hh(dB)	-NaN	108.47	58.37	83.38	3162
Range: Delay 75m, Spacing 15m, Gates 100	hv/vv(dB)	-NaN	-19.84	-47.54	-36.65	1225
Ave. Pulses: 84, Rng/Prof Aspect@90m/s: 5.7	hv/vv(dB)	-NaN	-12.53	-35.91	-30.63	337.
	hn_jmp(dB)	-2.12	2.19	-0.08	-8.66	13.9
	vn_jmp(dB)	-2.31	2.48	-0.06	-8.62	13.9



IHOP 2002 (dual-antenna config, modes 1,3,4,7) Data (cal: 55.0,50.0)

W2002-05-30-17-54-41 - PPMAG4  
 IRIG:1,UTC: 17:54:21.70 to 18:00:39.97, Dur: 378s  
 TimeLngth: 378.27s, TimeInt: 29ms (34.3pps)  
 TimeCor=-13.0s, DSPDif(mn,mx,min):29,28,289  
 PPS(min,max,std): 26,36,2.09  
 Prof: 72 to 13062, NumProf(t/r): 12990/12990  
 MxACQtime: 33ms; DRate: 192.2KB/s; Flags: 0, 0, 0  
 Pulse: 275ns, IFfilt: 5.0MHz; ppPol: HH HV VV  
 TxPol: HHVV, PRF: 20 10 20 10 kHz  
 Range: Delay 75m, Spacing 15m, Gates 100  
 Ave. Pulses: 84, Rng/Prof Aspect@90m/s: 5.7

	Min	Max	Mean	Std	Varc%
hhN(dB)	-66.94	-63.76	-65.15	-75.23	9.8
vvN(dB)	-67.66	-62.42	-64.39	-72.59	15.1
hhL(dB)	-18.84	-9.97	-12.95	-19.54	21.9
vvL(dB)	-42.58	-17.74	-21.13	-24.95	41.4
ppN(m/s)	-12.63	12.12	-0.01	4.17	
ppT(m/s)	-99.79	95.73	-0.07	32.91	
hh/vv(dB)	-NaN	108.47	58.37	83.38	3162
vh/hh(dB)	-NaN	-19.84	-47.54	-36.65	1225
hv/vv(dB)	-NaN	-12.53	-35.91	-30.63	337.
hnjmp(dB)	-2.12	2.19	-0.08	-8.66	13.9
vnjmp(dB)	-2.31	2.48	-0.06	-8.62	13.9



IHOP 2002 (dual-antenna config, modes 1,3,4,7) Data (cal: 55.0,50.0)

W2002-05-30-17-54-41 - PPMAG4						
IRIG:1,UTC: 17:54:21.70 to 18:00:39.97, Dur: 378s	hhN (dB)	Min	Max	Mean	Std	Varc%
TimeLngth: 378.27s, TimeInt: 29ms (34.3pps)	vvN (dB)	-66.94	-63.76	-65.15	-75.23	9.8
TimeCor=-13.0s, DSPDif(mn,mx,min):29,28,289	hhL (dB)	-67.66	-62.42	-64.39	-72.59	15.1
PPS(min,max,std): 26,36,2.09	vvL (dB)	-18.84	-9.97	-12.95	-19.54	21.9
Prof: 72 to 13062, NumProf(t/r): 12990/12990	ppN (m/s)	-42.58	-17.74	-21.13	-24.95	41.4
MxACQtime: 33ms; DRate: 192.2KB/s; Flags: 0, 0, 0	ppT (m/s)	-12.63	12.12	-0.01	4.17	
Pulse: 275ns, IFfilt: 5.0MHz; ppPol: HH HV VV	hh/vv (dB)	-99.79	95.73	-0.07	32.91	
TxPol: HHVV, PRF: 20 10 20 10 kHz	vh/hh (dB)	-NaN	108.47	58.37	83.38	3162
Range: Delay 75m, Spacing 15m, Gates 100	hv/vv (dB)	-NaN	-19.84	-47.54	-36.65	1225
Ave. Pulses: 84, Rng/Prof Aspect@90m/s: 5.7	hn/vv (dB)	-NaN	-12.53	-35.91	-30.63	337.
	hn/jmp (dB)	-2.12	2.19	-0.08	-8.66	13.9
	vn/jmp (dB)	-2.31	2.48	-0.06	-8.62	13.9