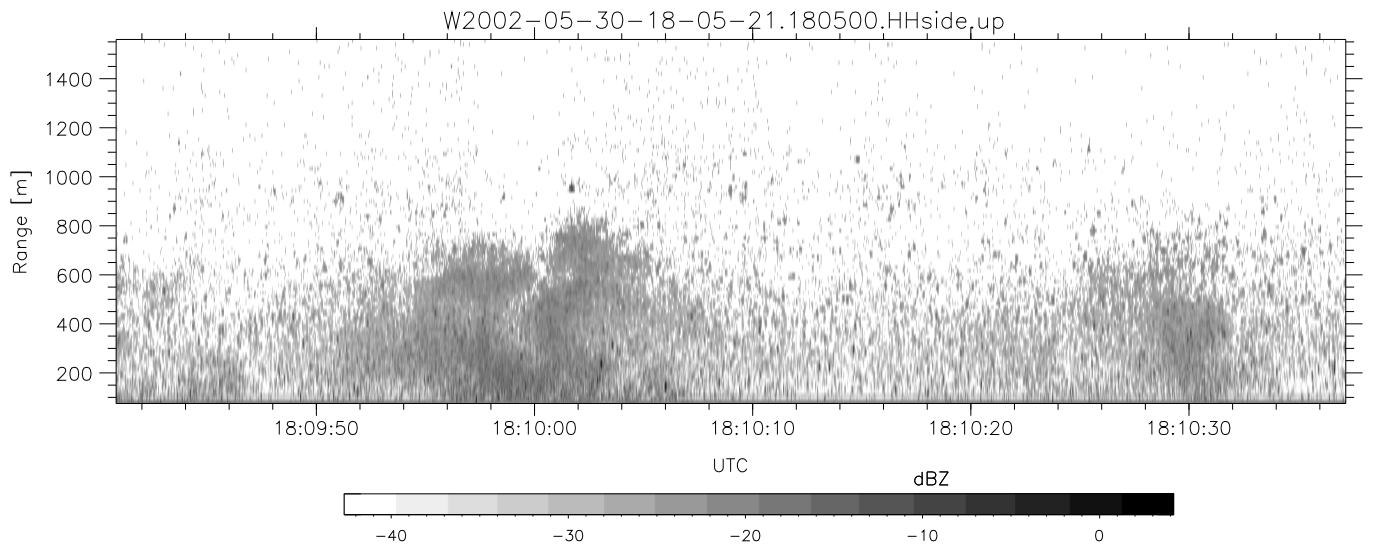
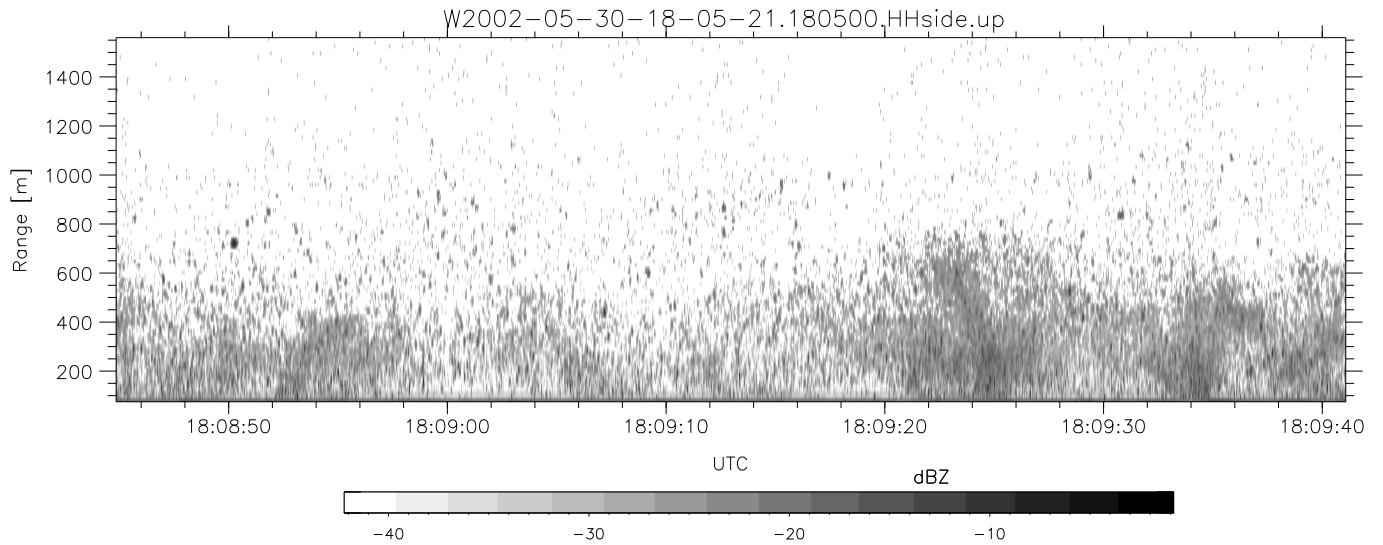
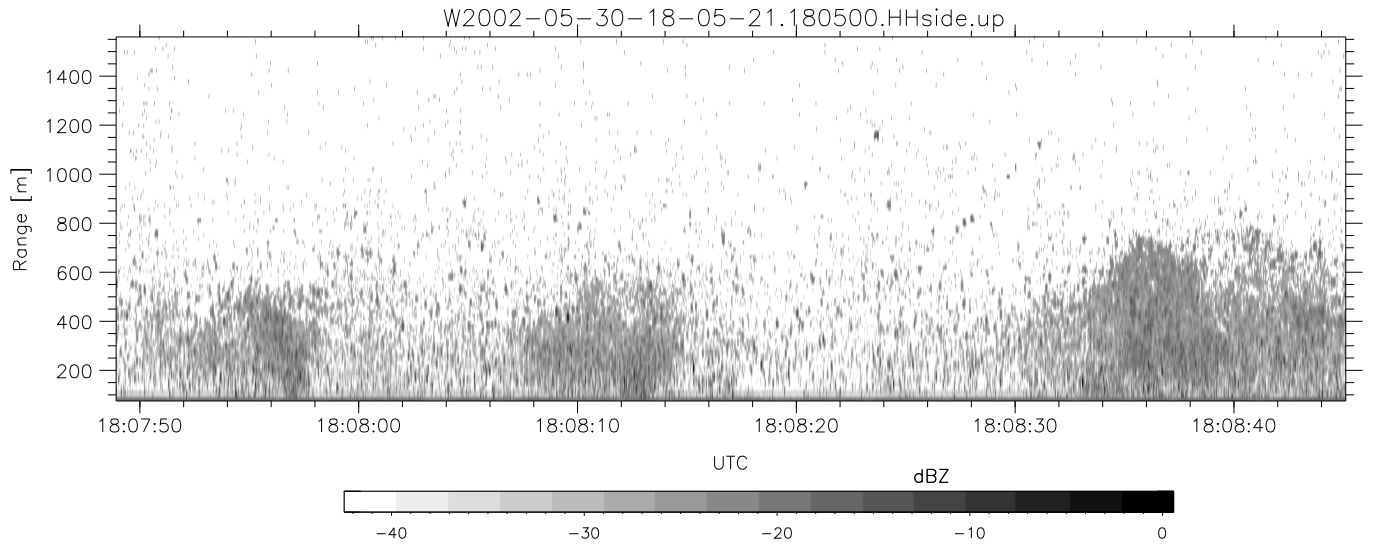


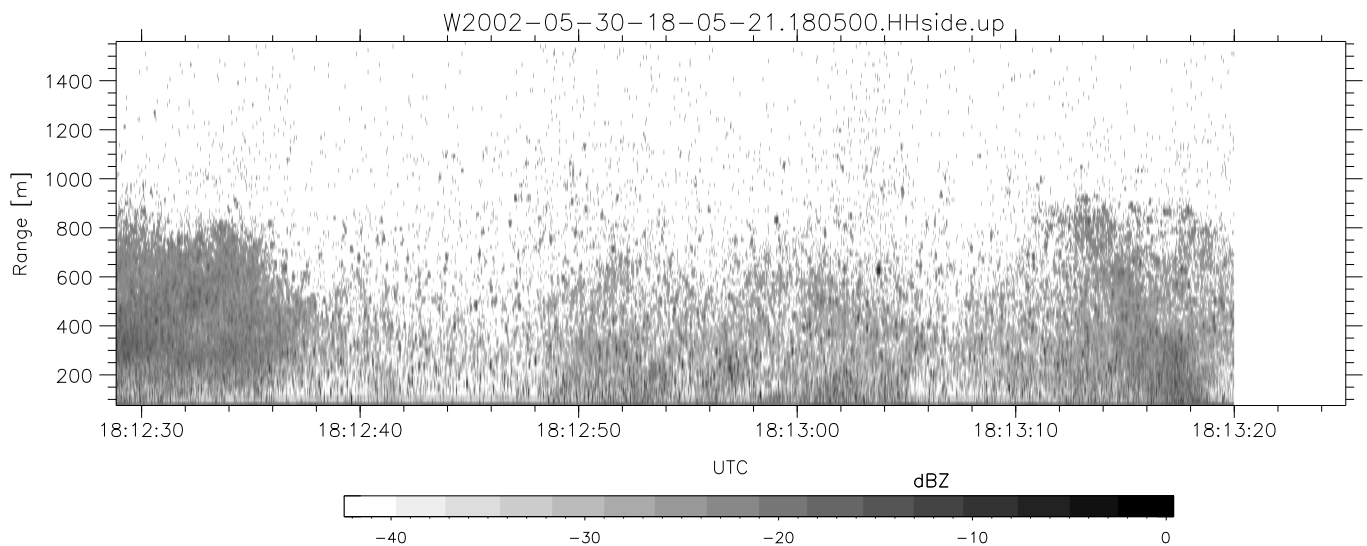
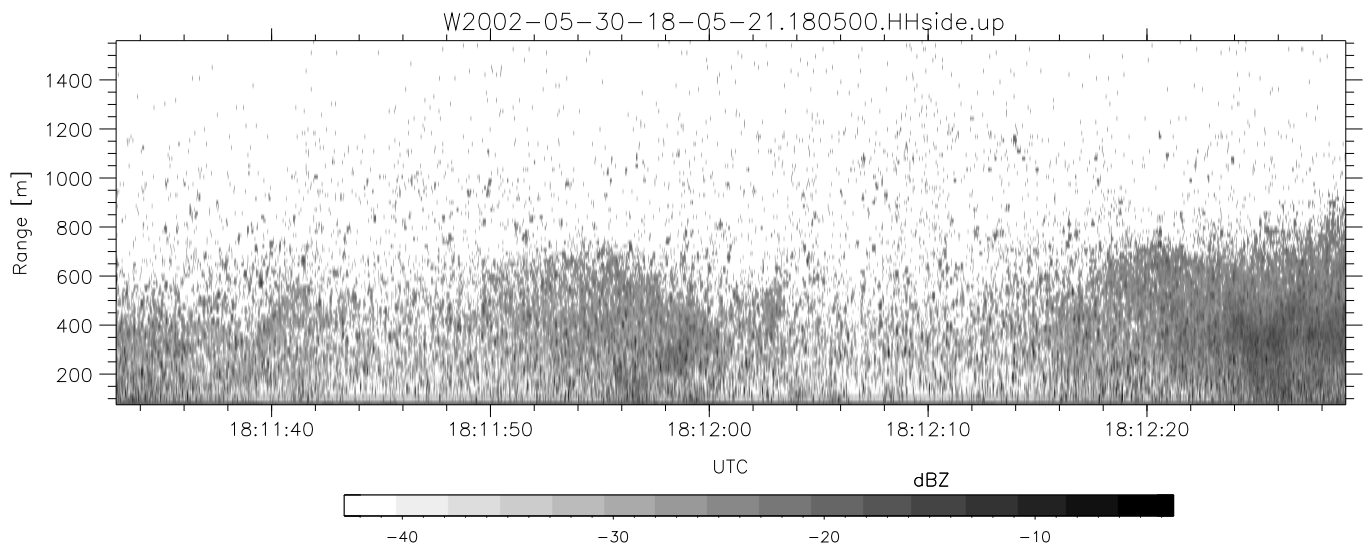
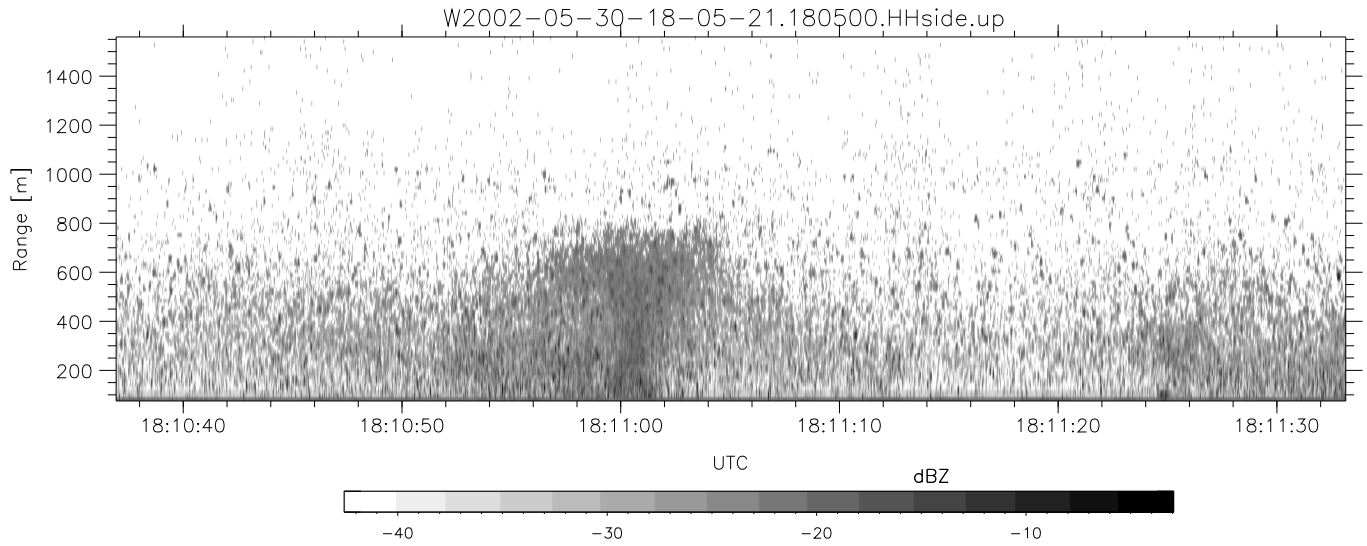
IHOP 2002 (dual-antenna config, modes 1,3,4,7) Data (cal: 49.0,50.0)

W2002-05-30-18-05-21 - PPMAG4	Min	Max	Mean	Std	Varc%	
IRIG:1,UTC: 18:05:00.93 to 19:26:15.64, Dur: 4875s	hhN (dB)	-67.17	-64.04	-65.54	-75.59	9.9
TimeLngth: 4874.71s, TimeInt: 29ms (34.2pps)	vvN (dB)	-70.43	-59.87	-66.56	-70.16	43.7
TimeCor=-13.0s, DSPDif(mn,mx,min):29,28,338	hhL (dB)	-22.09	-8.07	-12.77	-17.90	30.7
PPS(min,max,std): 25,36,2.10	vvL (dB)	-63.96	-20.46	-31.29	-29.64	146.
Prof: 5209 to 171914, NumProf(t/r): 166705/17069	ppN (m/s)	-12.17	12.60	0.03	4.15	
ProcTime/Recs: 18:05:00-18:13:19/0-17068	ppT (m/s)	-96.14	99.56	0.24	32.77	
MxACQtime: 33ms; DRate: 191.4KB/s; Flags: 0, 0, 0	hh/vv (dB)	-NaN	56.36	7.40	36.85	8809
Pulse: 275ns, IFfilt: 5.0MHz; ppPol: HH HV VV	vh/hh (dB)	-NaN	-14.17	-33.11	-25.07	636.
TxPol: HHVV, PRF: 20 10 20 10 kHz	hv/vv (dB)	-39.34	12.15	-13.10	-6.57	449.
Range: Delay 75m, Spacing 15m, Gates 100	hnjmp (dB)	-2.23	2.02	0.15	-8.39	14.0
Ave. Pulses: 84, Rng/Prof Aspect@90m/s: 5.7	vnjmp (dB)	-2.90	2.43	0.15	-8.40	14.0



IHOP 2002 (dual-antenna config, modes 1,3,4,7) Data (cal: 49.0,50.0)

	Min	Max	Mean	Std	Varc%
W2002-05-30-18-05-21 - PPMAG4					
IRIG:1,UTC: 18:05:00.93 to 19:26:15.64, Dur: 4875s					
TimeLngth: 4874.71s, TimeInt: 29ms (34.2pps)	hhN (dB)	-67.17 -64.04	-65.54	-75.59	9.9
TimeCor=-13.0s, DSPDif(mn,mx,min):29,28,338	vvN (dB)	-70.43 -59.87	-66.56	-70.16	43.7
PPS(min,max,std): 25,36,2.10	hhL (dB)	-22.09 -8.07	-12.77	-17.90	30.7
Prof: 5209 to 171914, NumProf(t/r): 166705/17069	vvL (dB)	-63.96 -20.46	-31.29	-29.64	146.
ProcTime/Recs: 18:05:00-18:13:19/0-17068	ppN (m/s)	-12.17 12.60	0.03	4.15	
MxACQtime: 33ms; DRate: 191.4KB/s; Flags: 0, 0, 0	ppT (m/s)	-96.14 99.56	0.24	32.77	
Pulse: 275ns, IFilt: 5.0MHz; ppPol: HH HV VV	hh/vv (dB)	-NaN 56.36	7.40	36.85	8809
TxPol: HHVV, PRF: 20 10 20 10 kHz	vh/hh (dB)	-NaN -14.17	-33.11	-25.07	636.
Range: Delay 75m, Spacing 15m, Gates 100	hv/vv (dB)	-39.34 12.15	-13.10	-6.57	449.
Ave. Pulses: 84, Rng/Prof Aspect@90m/s: 5.7	hn/jmp (dB)	-2.23 2.02	0.15	-8.39	14.0
	vn/jmp (dB)	-2.90 2.43	0.15	-8.40	14.0



IHOP 2002 (dual-antenna config, modes 1,3,4,7) Data (cal: 49.0,50.0)

	Min	Max	Mean	Std	Varc%
W2002-05-30-18-05-21 - PPMAG4					
IRIG:1,UTC: 18:05:00.93 to 19:26:15.64, Dur: 4875s					
TimeLngth: 4874.71s, TimeInt: 29ms (34.2pps)					
TimeCor=-13.0s, DSPDif(mn,mx,min):29,28,338					
PPS(min,max,std): 25,36,2.10					
Prof: 5209 to 171914, NumProf(t/r): 166705/17069					
ProcTime/Recs: 18:05:00-18:13:19/0-17068					
MxACQtime: 33ms; DRate: 191.4KB/s; Flags: 0, 0, 0					
Pulse: 275ns, IFfilt: 5.0MHz; ppPol: HH HV VV					
TxPol: HHVV, PRF: 20 10 20 10 kHz					
Range: Delay 75m, Spacing 15m, Gates 100					
Ave. Pulses: 84, Rng/Prof Aspect@90m/s: 5.7					
hhN(dB)	-67.17	-64.04	-65.54	-75.59	9.9
vvN(dB)	-70.43	-59.87	-66.56	-70.16	43.7
hhL(dB)	-22.09	-8.07	-12.77	-17.90	30.7
vvL(dB)	-63.96	-20.46	-31.29	-29.64	146.
ppN(m/s)	-12.17	12.60	0.03	4.15	
ppT(m/s)	-96.14	99.56	0.24	32.77	
hh/vv(dB)	-NaN	56.36	7.40	36.85	8809
vh/hh(dB)	-NaN	-14.17	-33.11	-25.07	636.
hv/vv(dB)	-39.34	12.15	-13.10	-6.57	449.
hnjmp(dB)	-2.23	2.02	0.15	-8.39	14.0
vnjmp(dB)	-2.90	2.43	0.15	-8.40	14.0