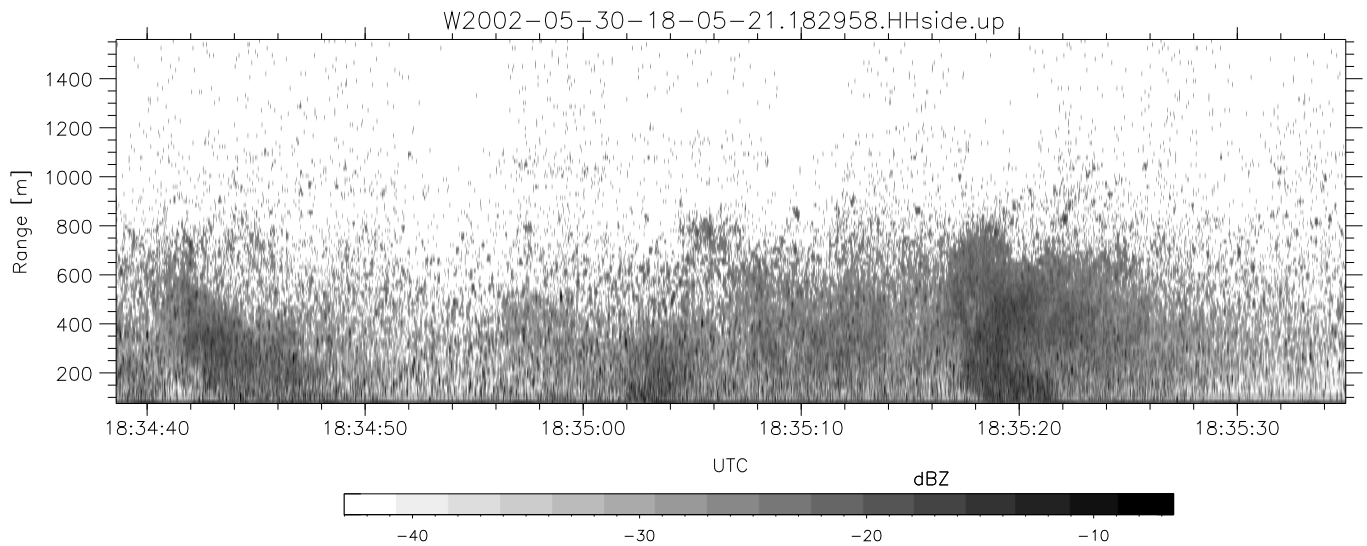
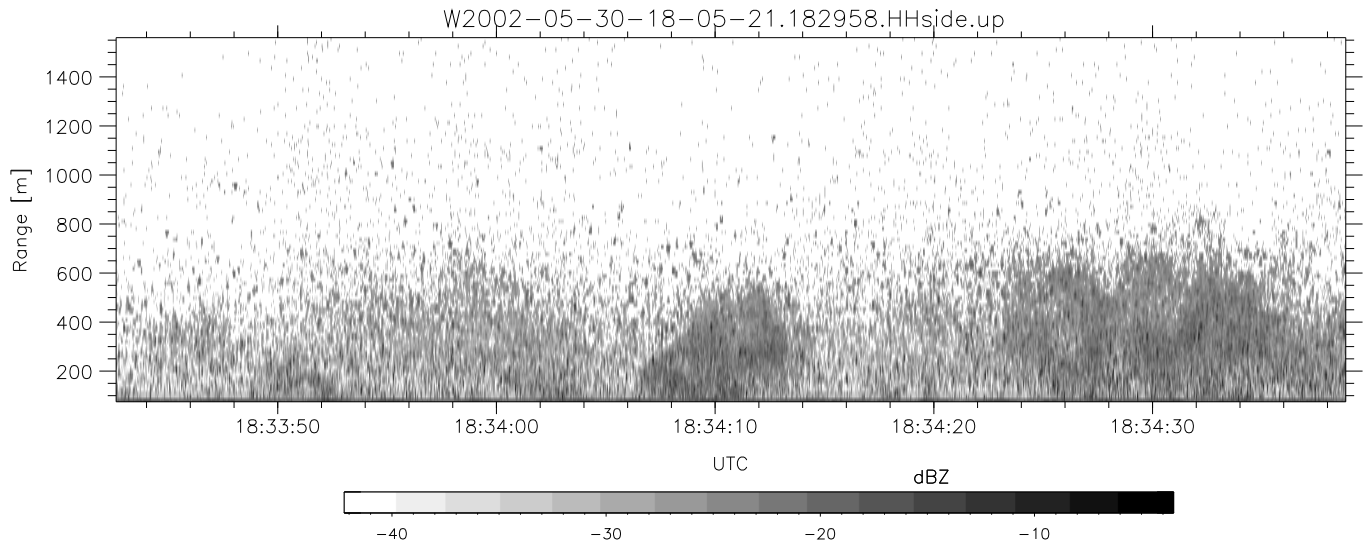
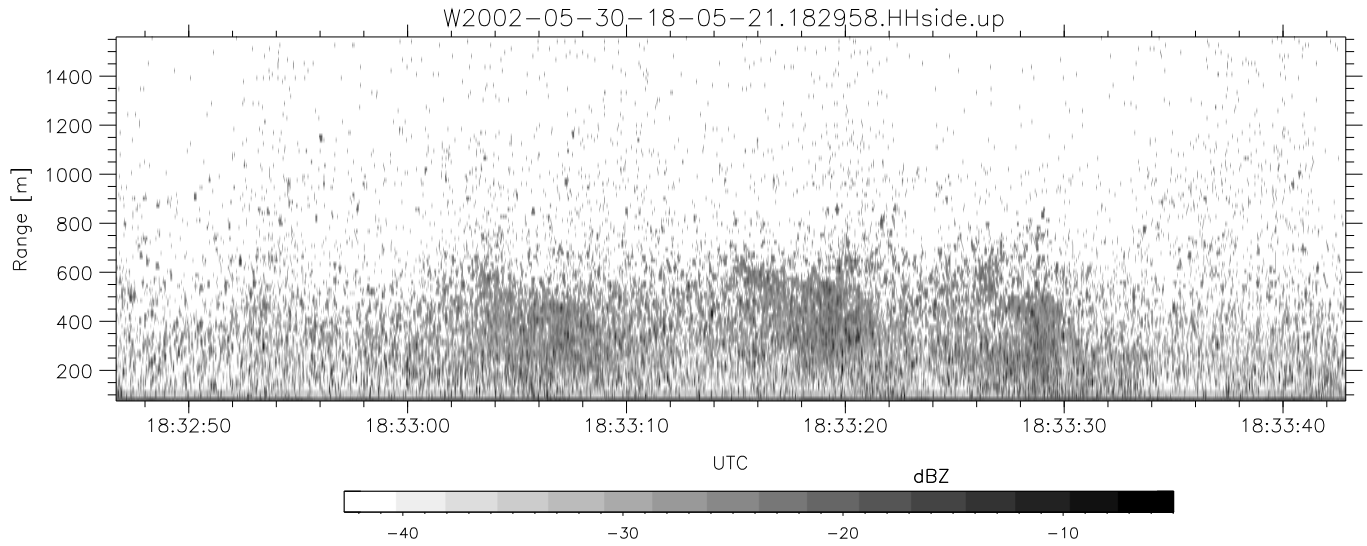


IHOP 2002 (dual-antenna config, modes 1,3,4,7) Data (cal: 49.0,50.0)

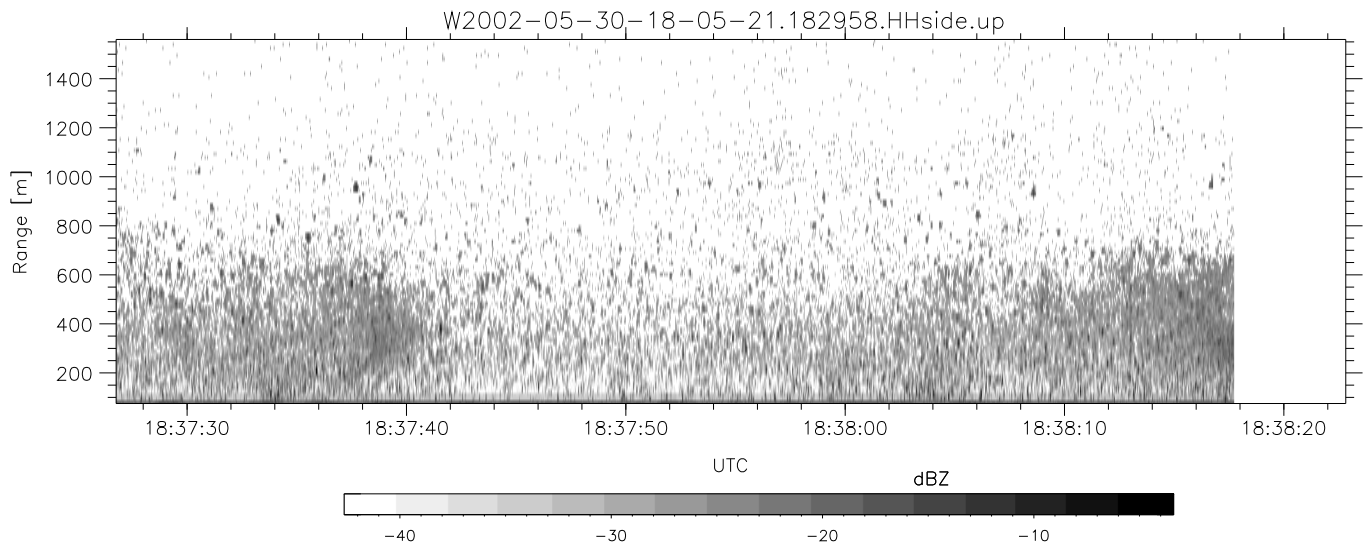
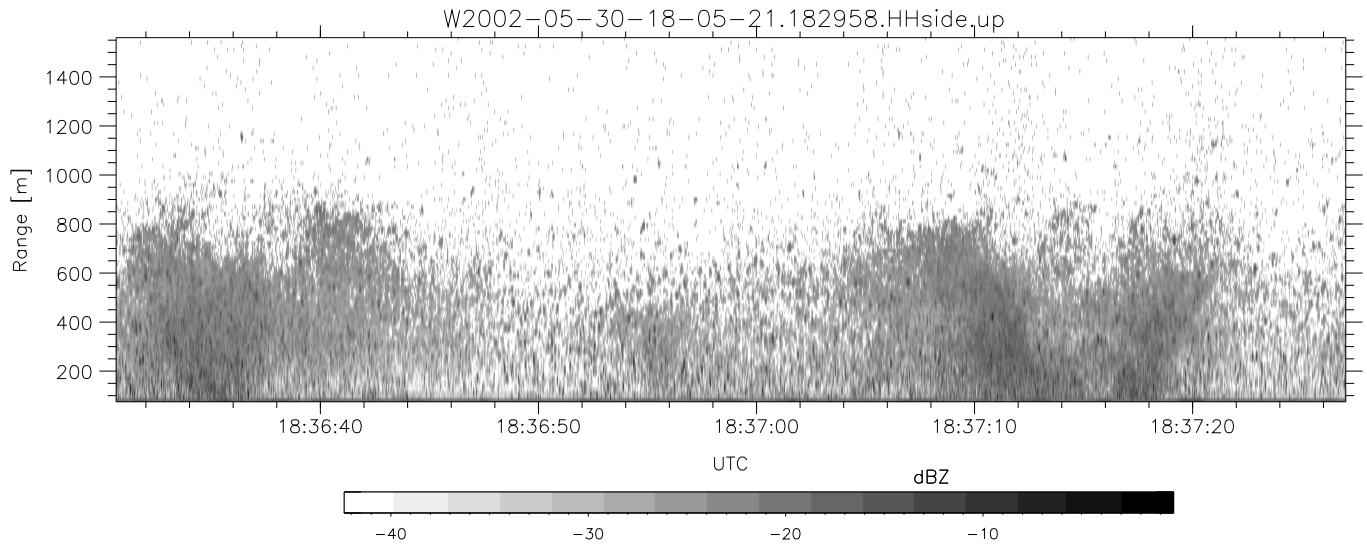
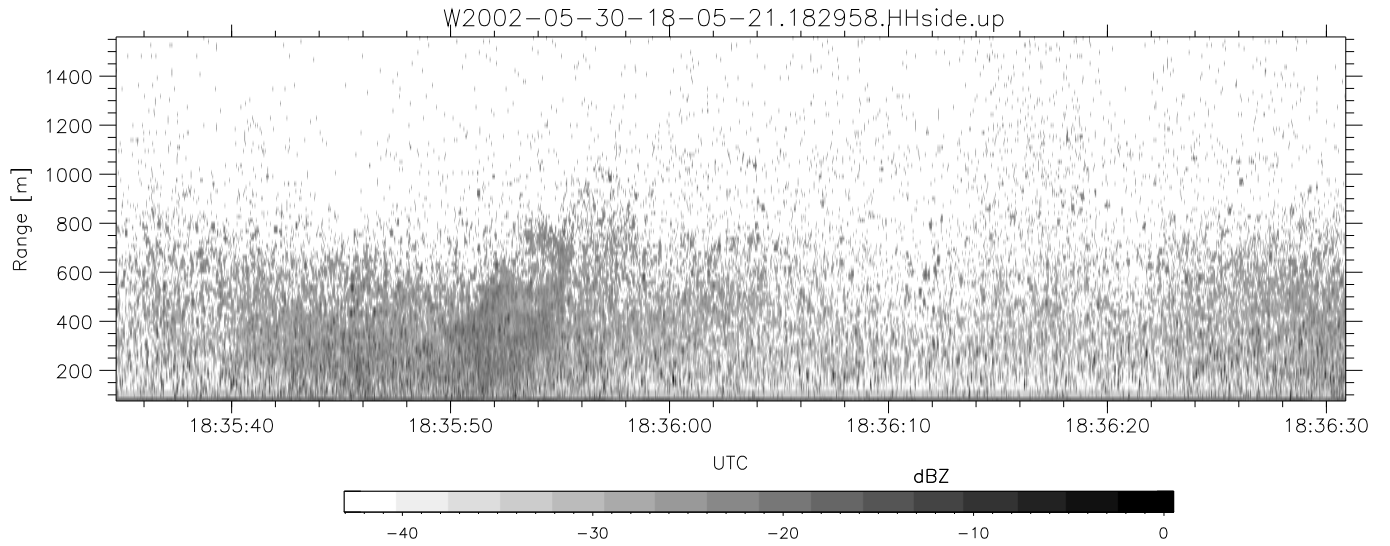
W2002-05-30-18-05-21 - PPMAG4	Min	Max	Mean	Std	Varc%	
IRIG:1,UTC: 18:05:00.93 to 19:26:15.64, Dur: 4875s	hhN(dB)	-67.43	-64.20	-65.70	-75.83	9.7
TimeLngth: 4874.71s, TimeInt: 29ms (34.2pps)	vvN(dB)	-70.60	-65.09	-68.46	-75.55	19.6
TimeCor=-13.0s, DSPDif(mn,mx,min):29,28,292	hhL(dB)	-18.45	-7.31	-12.19	-16.58	36.4
PPS(min,max,std): 26,36,2.12	vvL(dB)	-61.82	-36.68	-44.84	-46.16	73.9
Prof: 5209 to 171914, NumProf(t/r): 166705/17069	ppN(m/s)	-12.56	12.73	0.04	4.12	
ProcTime/Recs: 18:29:58-18:38:17/51207-68275	ppT(m/s)	-99.20	100.54	0.32	32.56	
MxACQtime: 33ms; DRate: 191.4KB/s; Flags: 0, 0, 0	hh/vv(dB)	-NaN	74.52	-NaN	61.14	-262
Pulse: 275ns, IFfilt: 5.0MHz; ppPol: HH HV VV	vh/hh(dB)	-NaN	-26.73	-39.21	-34.02	330.
TxPol: HHVV, PRF: 20 10 20 10 kHz	hv/vv(dB)	-24.26	7.25	0.38	-1.21	69.3
Range: Delay 75m, Spacing 15m, Gates 100	hn_jmp(dB)	-2.12	1.94	-0.07	-8.71	13.7
Ave. Pulses: 84, Rng/Prof Aspect@90m/s: 5.7	vn_jmp(dB)	-2.61	2.25	-0.09	-8.60	14.1



IHOP 2002 (dual-antenna config, modes 1,3,4,7) Data (cal: 49.0,50.0)

W2002-05-30-18-05-21 - PPMAG4
 IRIG:1,UTC: 18:05:00.93 to 19:26:15.64, Dur: 4875s
 TimeLngth: 4874.71s, TimeInt: 29ms (34.2pps)
 TimeCor=-13.0s, DSPDif(mn,mx,min):29,28,292
 PPS(min,max,std): 26,36,2.12
 Prof: 5209 to 171914, NumProf(t/r): 166705/17069
 ProcTime/Recs: 18:29:58-18:38:17/51207-68275
 MxACQtime: 33ms; DRate: 191.4KB/s; Flags: 0, 0, 0
 Pulse: 275ns, IFfilt: 5.0MHz; ppPol: HH HV VV
 TxPol: HHVV, PRF: 20 10 20 10 kHz
 Range: Delay 75m, Spacing 15m, Gates 100
 Ave. Pulses: 84, Rng/Prof Aspect@90m/s: 5.7

	Min	Max	Mean	Std	Varc%
hhN (dB)	-67.43	-64.20	-65.70	-75.83	9.7
vvN (dB)	-70.60	-65.09	-68.46	-75.55	19.6
hhL (dB)	-18.45	-7.31	-12.19	-16.58	36.4
vvL (dB)	-61.82	-36.68	-44.84	-46.16	73.9
ppN (m/s)	-12.56	12.73	0.04	4.12	
ppT (m/s)	-99.20	100.54	0.32	32.56	
hh/vv (dB)	-NaN	74.52	-NaN	61.14	-262
vh/hh (dB)	-NaN	-26.73	-39.21	-34.02	330.
hv/vv (dB)	-24.26	7.25	0.38	-1.21	69.3
hn/jmp (dB)	-2.12	1.94	-0.07	-8.71	13.7
vn/jmp (dB)	-2.61	2.25	-0.09	-8.60	14.1



IHOP 2002 (dual-antenna config, modes 1,3,4,7) Data (cal: 49.0,50.0)

	Min	Max	Mean	Std	Varc%
W2002-05-30-18-05-21 - PPMAG4					
IRIG:1,UTC: 18:05:00.93 to 19:26:15.64, Dur: 4875s					
TimeLngth: 4874.71s, TimeInt: 29ms (34.2pps)					
TimeCor=-13.0s, DSPDif(mn,mx,min):29,28,292					
PPS(min,max,std): 26,36,2.12					
Prof: 5209 to 171914, NumProf(t/r): 166705/17069					
ProcTime/Recs: 18:29:58-18:38:17/51207-68275					
MxACQtime: 33ms; DRate: 191.4KB/s; Flags: 0, 0, 0					
Pulse: 275ns, IFfilt: 5.0MHz; ppPol: HH HV VV					
TxPol: HHVV, PRF: 20 10 20 10 kHz					
Range: Delay 75m, Spacing 15m, Gates 100					
Ave. Pulses: 84, Rng/Prof Aspect@90m/s: 5.7					
hhN(dB)	-67.43	-64.20	-65.70	-75.83	9.7
vvN(dB)	-70.60	-65.09	-68.46	-75.55	19.6
hhL(dB)	-18.45	-7.31	-12.19	-16.58	36.4
vvL(dB)	-61.82	-36.68	-44.84	-46.16	73.9
ppN(m/s)	-12.56	12.73	0.04	4.12	
ppT(m/s)	-99.20	100.54	0.32	32.56	
hh/vv(dB)	-NaN	74.52	-NaN	61.14	-262
vh/hh(dB)	-NaN	-26.73	-39.21	-34.02	330.
hv/vv(dB)	-24.26	7.25	0.38	-1.21	69.3
hnjmp(dB)	-2.12	1.94	-0.07	-8.71	13.7
vnjmp(dB)	-2.61	2.25	-0.09	-8.60	14.1