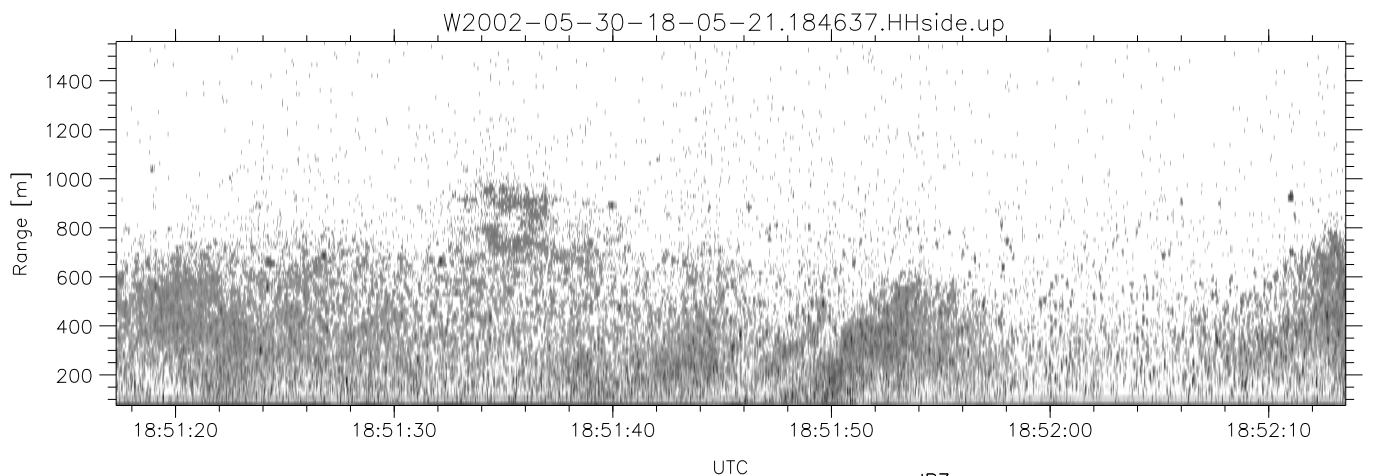
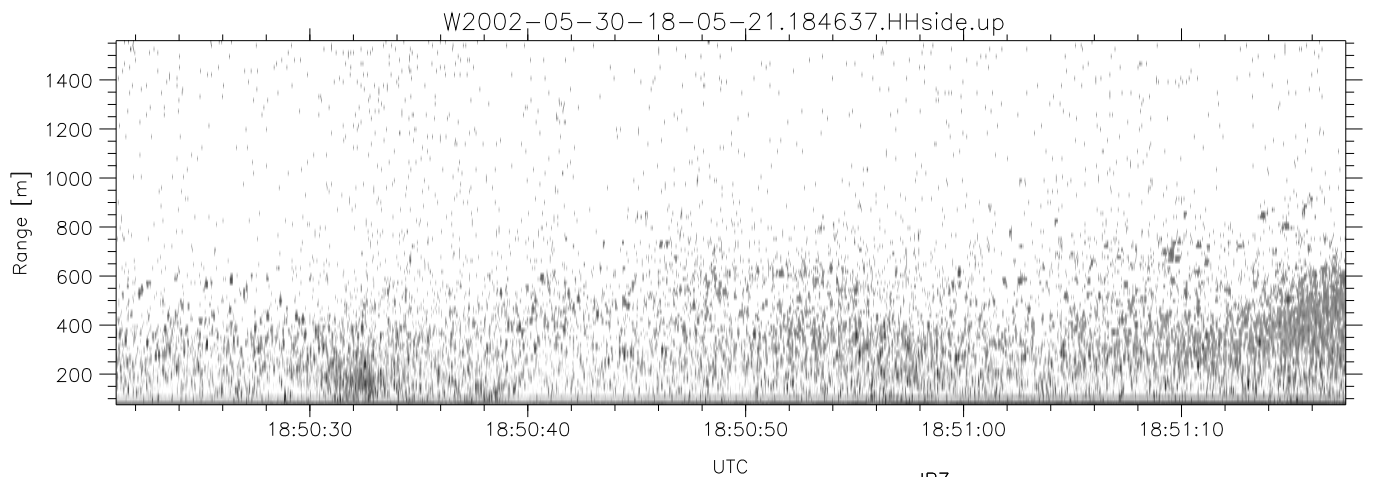
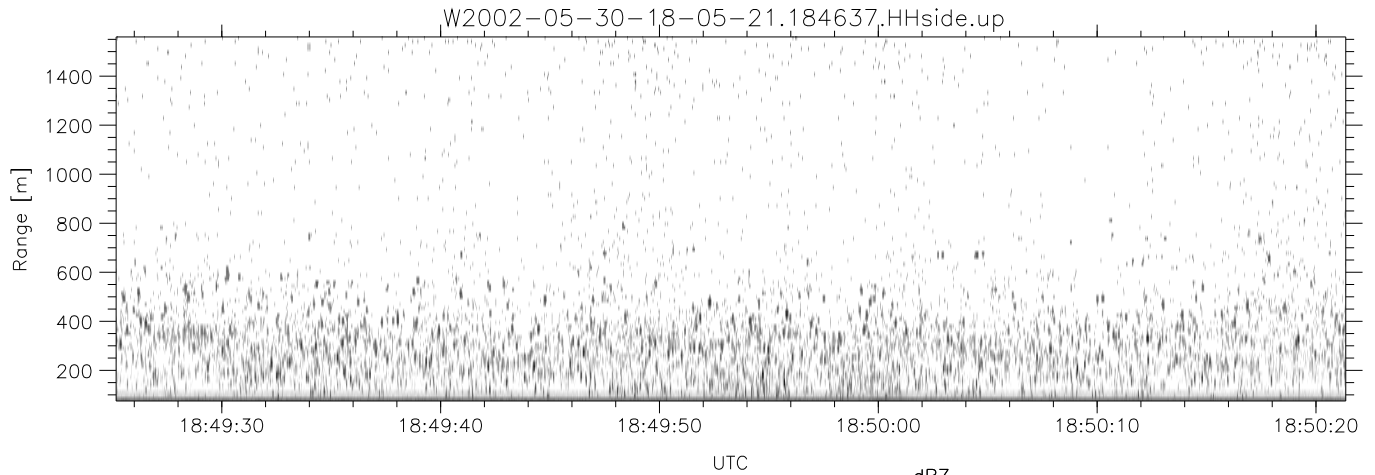


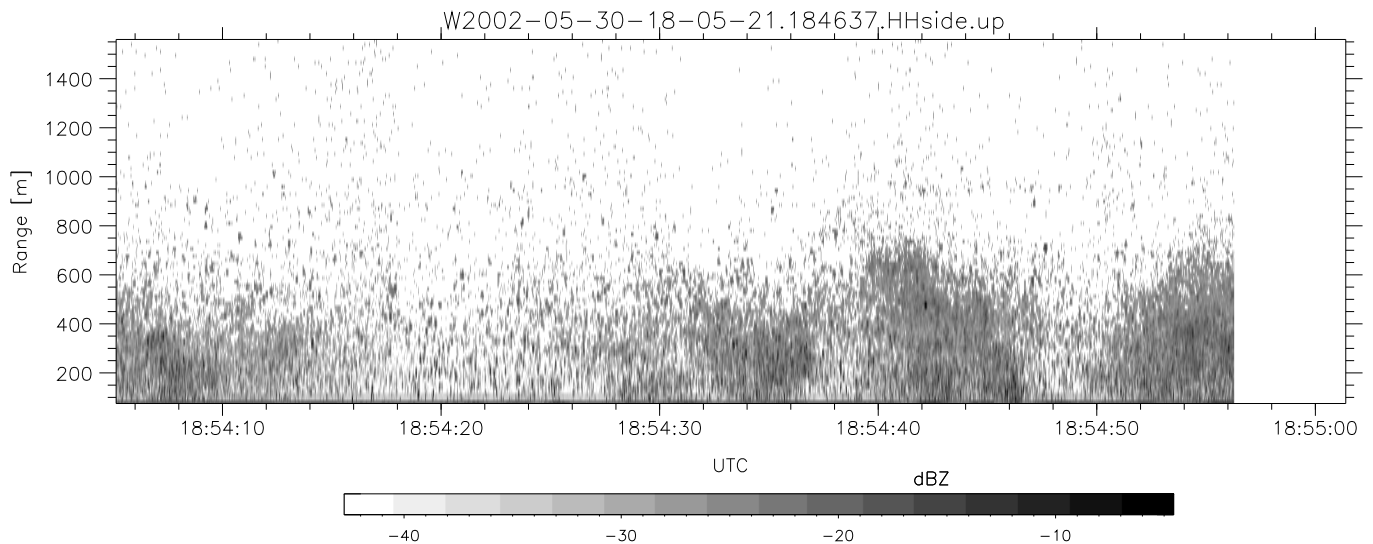
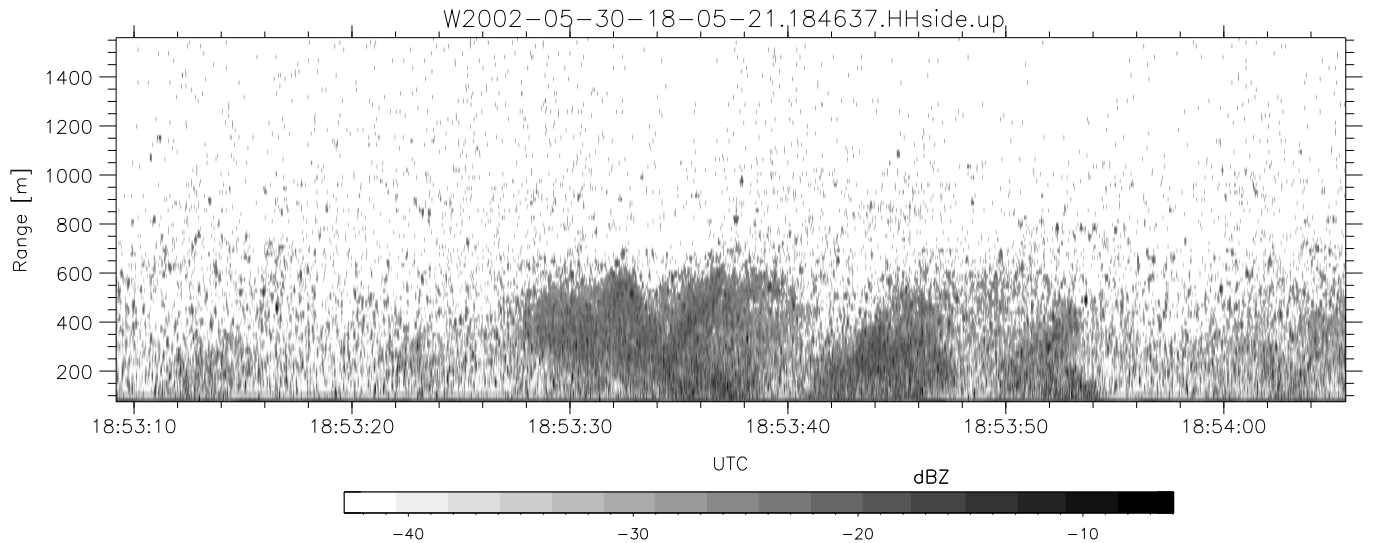
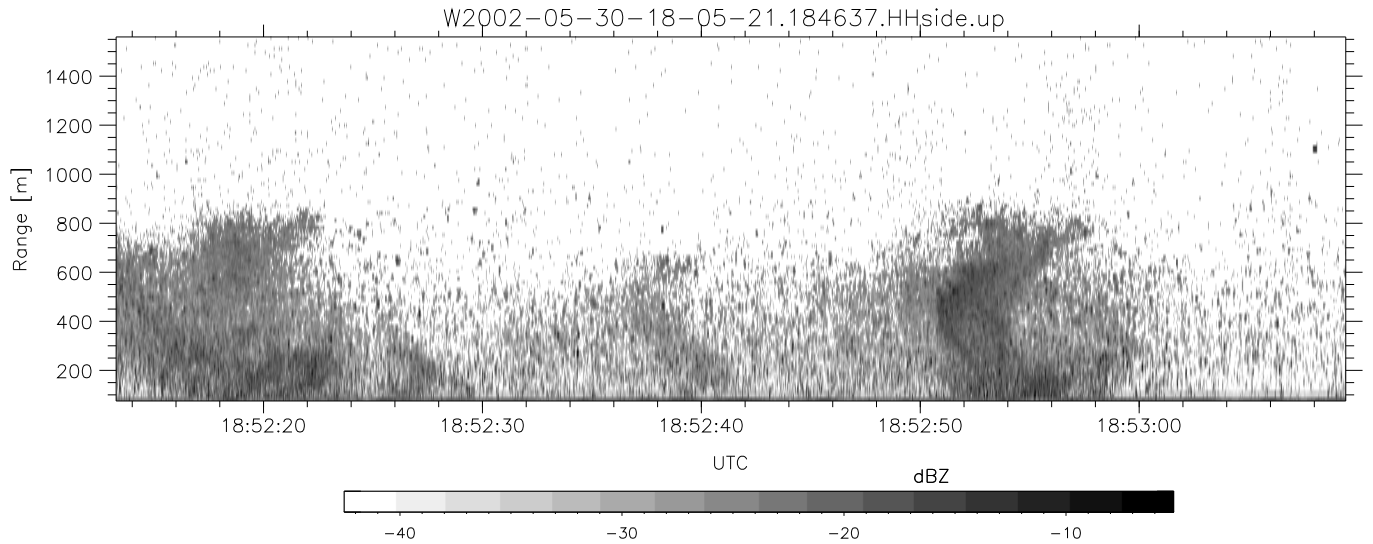
IHOP 2002 (dual-antenna config, modes 1,3,4,7) Data (cal: 49.0,50.0)

W2002-05-30-18-05-21 - PPMAG4	Min	Max	Mean	Std	Varc%	
IRIG:1,UTC: 18:05:00.93 to 19:26:15.64, Dur: 4875s	hhN (dB)	-67.50	-64.17	-65.76	-75.87	9.7
TimeLngth: 4874.71s, TimeInt: 29ms (34.2pps)	vvN (dB)	-70.57	-66.12	-67.88	-76.09	15.1
TimeCor=-13.0s, DSPDif(mn,mx,min):29,28,285	hhL (dB)	-26.61	-8.34	-14.92	-17.15	59.8
PPS(min,max,std): 26,36,2.13	vvL (dB)	-65.31	-34.92	-39.92	-42.64	53.5
Prof: 5209 to 171914, NumProf(t/r): 166705/17069	ppN (m/s)	-12.42	12.52	0.03	4.15	
ProcTime/Recs: 18:46:37-18:54:56/85345-102413	ppT (m/s)	-98.13	98.88	0.23	32.82	
MxACQtime: 33ms; DRate: 191.4KB/s; Flags: 0, 0, 0	hh/vv (dB)	-NaN	56.93	-NaN	43.58	-161
Pulse: 275ns, IFilt: 5.0MHz; ppPol: HH HV VV	vh/hh (dB)	-NaN	-32.16	-NaN	-35.67	-101
TxPol: HHVV, PRF: 20 10 20 10 kHz	hv/vv (dB)	-15.18	12.26	-7.82	-2.16	368.
Range: Delay 75m, Spacing 15m, Gates 100	hnjmp (dB)	-2.39	2.16	-0.07	-8.71	13.7
Ave. Pulses: 84, Rng/Prof Aspect@90m/s: 5.7	vnjmp (dB)	-2.33	2.27	-0.06	-8.53	14.2



IHOP 2002 (dual-antenna config, modes 1,3,4,7) Data (cal: 49.0,50.0)

W2002-05-30-18-05-21 - PPMAG4	Min	Max	Mean	Std	Varc%
IRIG:1,UTC: 18:05:00.93 to 19:26:15.64, Dur: 4875s	-67.50	-64.17	-65.76	-75.87	9.7
TimeLngth: 4874.71s, TimeInt: 29ms (34.2pps)	-70.57	-66.12	-67.88	-76.09	15.1
TimeCor=-13.0s, DSPDif(mn,mx,min):29,28,285	-26.61	-8.34	-14.92	-17.15	59.8
PPS(min,max,std): 26,36,2.13	-65.31	-34.92	-39.92	-42.64	53.5
Prof: 5209 to 171914, NumProf(t/r): 166705/17069	ppN(m/s)	-12.42	12.52	0.03	4.15
ProcTime/Recs: 18:46:37-18:54:56/85345-102413	ppT(m/s)	-98.13	98.88	0.23	32.82
MxACQtime: 33ms; DRate: 191.4KB/s; Flags: 0, 0, 0	hh/vv(dB)	-NaN	56.93	-NaN	43.58 -161
Pulse: 275ns, IFfilt: 5.0MHz; ppPol: HH HV VV	vh/hh(dB)	-NaN	-32.16	-NaN	-35.67 -101
TxPol: HHVV, PRF: 20 10 20 10 kHz	hv/vv(dB)	-15.18	12.26	-7.82	-2.16 368.
Range: Delay 75m, Spacing 15m, Gates 100	hn/jmp(dB)	-2.39	2.16	-0.07	-8.71 13.7
Ave. Pulses: 84, Rng/Prof Aspect@90m/s: 5.7	vn/jmp(dB)	-2.33	2.27	-0.06	-8.53 14.2



IHOP 2002 (dual-antenna config, modes 1,3,4,7) Data (cal: 49.0,50.0)

	Min	Max	Mean	Std	Varc%
W2002-05-30-18-05-21 - PPMAG4					
IRIG:1,UTC: 18:05:00.93 to 19:26:15.64, Dur: 4875s					
TimeLngth: 4874.71s, TimeInt: 29ms (34.2pps)					
TimeCor=-13.0s, DSPDif(mn,mx,min):29,28,285					
PPS(min,max,std): 26,36,2.13					
Prof: 5209 to 171914, NumProf(t/r): 166705/17069					
ProcTime/Recs: 18:46:37-18:54:56/85345-102413					
MxACQtime: 33ms; DRate: 191.4KB/s; Flags: 0, 0, 0					
Pulse: 275ns, IFfilt: 5.0MHz; ppPol: HH HV VV					
TxPol: HHVV, PRF: 20 10 20 10 kHz					
Range: Delay 75m, Spacing 15m, Gates 100					
Ave. Pulses: 84, Rng/Prof Aspect@90m/s: 5.7					
hhN(dB)	-67.50	-64.17	-65.76	-75.87	9.7
vvN(dB)	-70.57	-66.12	-67.88	-76.09	15.1
hhL(dB)	-26.61	-8.34	-14.92	-17.15	59.8
vvL(dB)	-65.31	-34.92	-39.92	-42.64	53.5
ppN(m/s)	-12.42	12.52	0.03	4.15	
ppT(m/s)	-98.13	98.88	0.23	32.82	
hh/vv(dB)	-NaN	56.93	-NaN	43.58	-161
vh/hh(dB)	-NaN	-32.16	-NaN	-35.67	-101
hv/vv(dB)	-15.18	12.26	-7.82	-2.16	368.
hnjmp(dB)	-2.39	2.16	-0.07	-8.71	13.7
vnjmp(dB)	-2.33	2.27	-0.06	-8.53	14.2