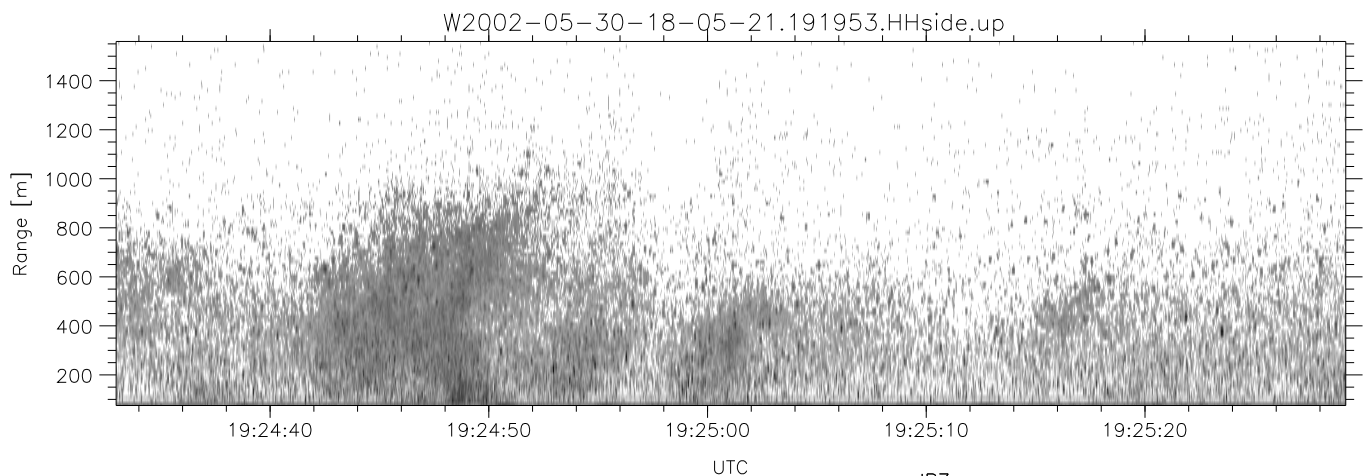
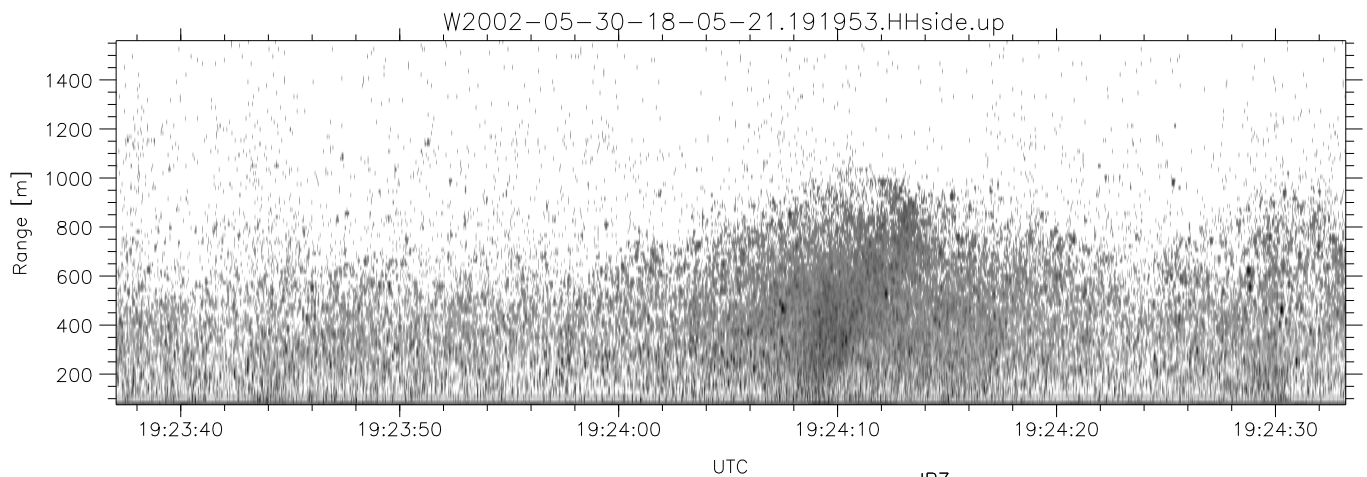
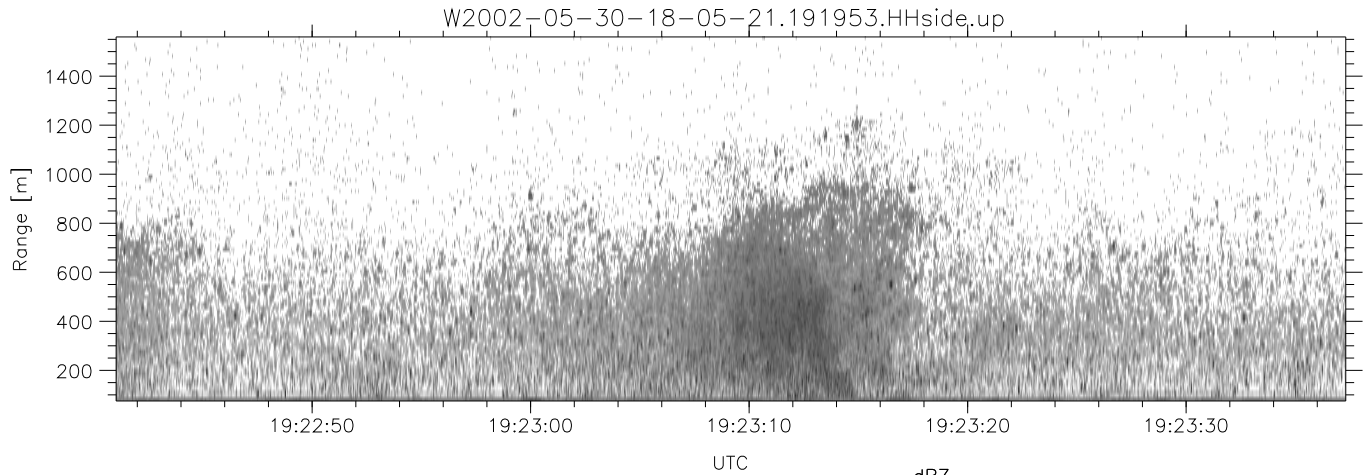


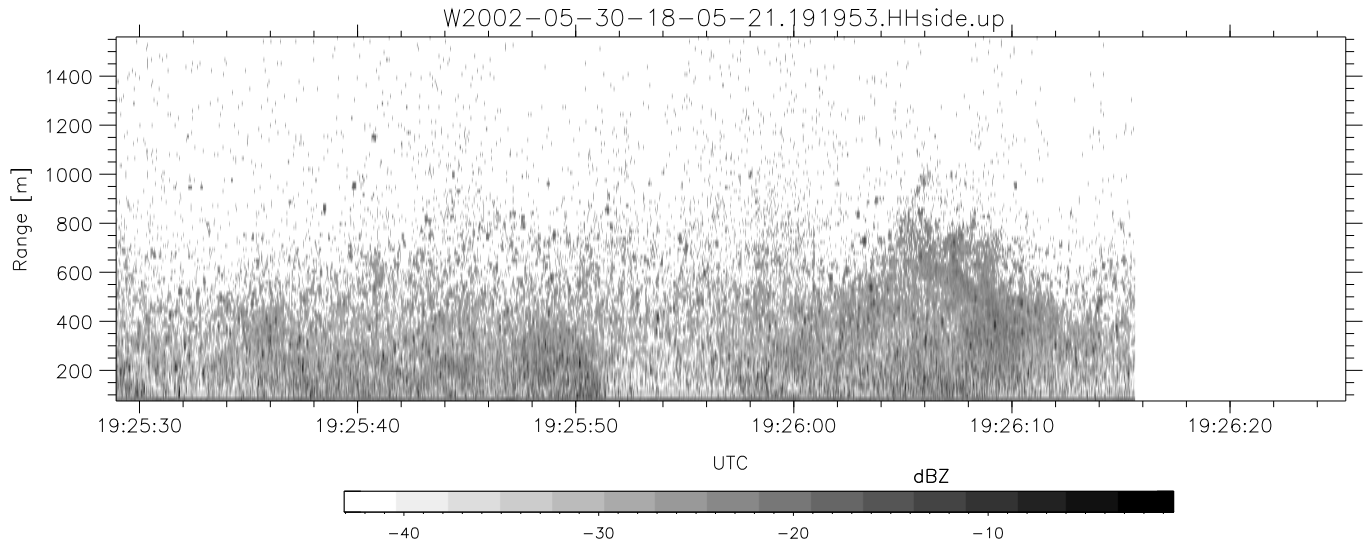
IHOP 2002 (dual-antenna config, modes 1,3,4,7) Data (cal: 49.0,50.0)

W2002-05-30-18-05-21 - PPMAG4	Min	Max	Mean	Std	Varc%
IRIG:1,UTC: 18:05:00.93 to 19:26:15.64, Dur: 4875s	-67.59	-64.40	-65.85	-76.03	9.6
TimeLngth: 4874.71s, TimeInt: 29ms (34.2pps)	-71.51	-67.69	-69.52	-78.89	11.6
TimeCor=-13.0s, DSPDif(mn,mx,min):29,28,286	-21.70	-8.50	-14.14	-17.60	45.2
PPS(min,max,std): 26,36,2.19	-68.70	-46.11	-53.68	-54.69	79.2
Prof: 5209 to 171914, NumProf(t/r): 166705/13084	ppN(m/s)	-12.36	12.44	0.02	4.14
ProcTime/Recs: 19:19:53-19:26:15/153621-166704	ppT(m/s)	-97.65	98.30	0.18	32.69
MxACQtime: 33ms; DRate: 191.4KB/s; Flags: 0, 0, 0	hh/vv(dB)	-NaN	62.67	-NaN	51.45 -295
Pulse: 275ns, IFfilt: 5.0MHz; ppPol: HH HV VV	vh/hh(dB)	-NaN	-33.38	-44.42	-38.90 356.
TxPol: HHVV, PRF: 20 10 20 10 kHz	hv/vv(dB)	-2.47	15.77	7.15	6.72 90.5
Range: Delay 75m, Spacing 15m, Gates 100	hn/jmp(dB)	-2.29	2.05	-0.07	-8.77 13.5
Ave. Pulses: 84, Rng/Prof Aspect@90m/s: 5.7	vn/jmp(dB)	-2.25	2.00	-0.07	-8.64 13.9



IHOP 2002 (dual-antenna config, modes 1,3,4,7) Data (cal: 49.0,50.0)

W2002-05-30-18-05-21 - PPMAG4	Min	Max	Mean	Std	Varc%	
IRIG:1,UTC: 18:05:00.93 to 19:26:15.64, Dur: 4875s	hhN (dB)	-67.59	-64.40	-65.85	-76.03	9.6
TimeLngth: 4874.71s, TimeInt: 29ms (34.2pps)	vvN (dB)	-71.51	-67.69	-69.52	-78.89	11.6
TimeCor=-13.0s, DSPDif(mn,mx,min):29,28,286	hhL (dB)	-21.70	-8.50	-14.14	-17.60	45.2
PPS(min,max,std): 26,36,2.19	vvL (dB)	-68.70	-46.11	-53.68	-54.69	79.2
Prof: 5209 to 171914, NumProf(t/r): 166705/13084	ppN (m/s)	-12.36	12.44	0.02	4.14	
ProcTime/Recs: 19:19:53-19:26:15/153621-166704	ppT (m/s)	-97.65	98.30	0.18	32.69	
MxACQtime: 33ms; DRate: 191.4KB/s; Flags: 0, 0, 0	hh/vv (dB)	-NaN	62.67	-NaN	51.45	-295
Pulse: 275ns, IFilt: 5.0MHz; ppPol: HH HV VV	vh/hh (dB)	-NaN	-33.38	-44.42	-38.90	356.
TxPol: HHVV, PRF: 20 10 20 10 kHz	hv/vv (dB)	-2.47	15.77	7.15	6.72	90.5
Range: Delay 75m, Spacing 15m, Gates 100	hn/jmp (dB)	-2.29	2.05	-0.07	-8.77	13.5
Ave. Pulses: 84, Rng/Prof Aspect@90m/s: 5.7	vn/jmp (dB)	-2.25	2.00	-0.07	-8.64	13.9



IHOP 2002 (dual-antenna config, modes 1,3,4,7) Data (cal: 49.0,50.0)

W2002-05-30-18-05-21 - PPMAG4						
IRIG:1,UTC: 18:05:00.93 to 19:26:15.64, Dur: 4875s	hhN(dB)	Min	Max	Mean	Std	Varc%
TimeLngth: 4874.71s, TimeInt: 29ms (34.2pps)	vvN(dB)	-67.59	-64.40	-65.85	-76.03	9.6
TimeCor=-13.0s, DSPDif(mn,mx,min):29,28,286	hhL(dB)	-71.51	-67.69	-69.52	-78.89	11.6
PPS(min,max,std): 26,36,2.19	vvL(dB)	-21.70	-8.50	-14.14	-17.60	45.2
Prof: 5209 to 171914, NumProf(t/r): 166705/13084	ppN(m/s)	-68.70	-46.11	-53.68	-54.69	79.2
ProcTime/Recs: 19:19:53-19:26:15/153621-166704	ppT(m/s)	-12.36	12.44	0.02	4.14	
MxACQtime: 33ms; DRate: 191.4KB/s; Flags: 0, 0, 0	hh/vv(dB)	-97.65	98.30	0.18	32.69	
Pulse: 275ns, IFilt: 5.0MHz; ppPol: HH HV VV	vh/vv(dB)	-NaN	62.67	-NaN	51.45	-295
TxPol: HHVV, PRF: 20 10 20 10 kHz	hh/vv(dB)	-NaN	-33.38	-44.42	-38.90	356.
Range: Delay 75m, Spacing 15m, Gates 100	hv/vv(dB)	-2.47	15.77	7.15	6.72	90.5
Ave. Pulses: 84, Rng/Prof Aspect@90m/s: 5.7	hn/jmp(dB)	-2.29	2.05	-0.07	-8.77	13.5
	vn/jmp(dB)	-2.25	2.00	-0.07	-8.64	13.9