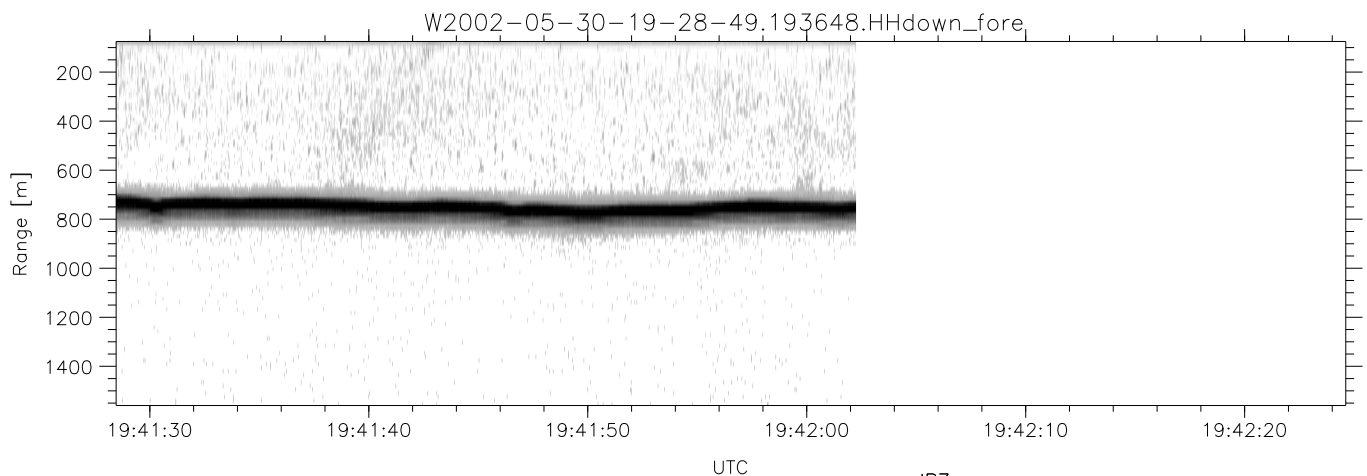
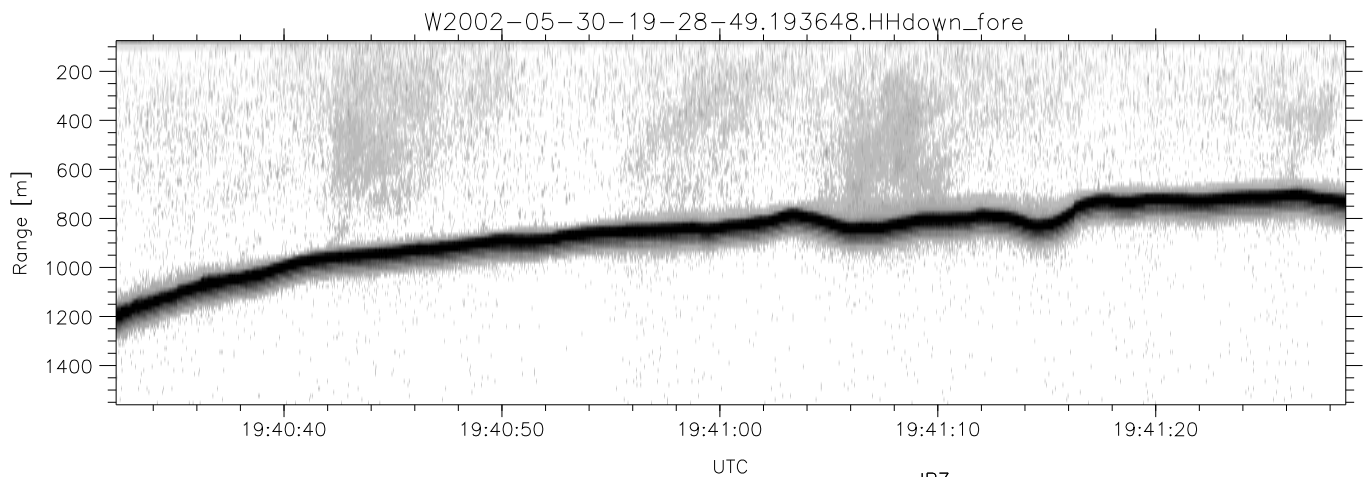
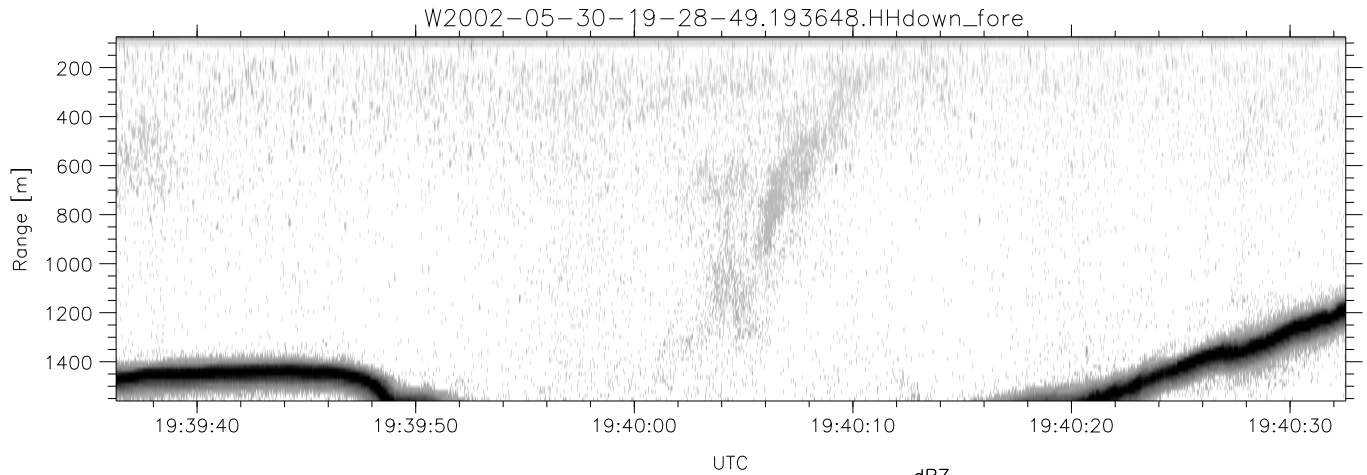


IHOP 2002 (dual-antenna config, modes 1,3,4,7) Data (cal: 55.0,50.0)

W2002-05-30-19-28-49 - PPMAG4	Min	Max	Mean	Std	Varc%	
IRIG:1,UTC: 19:28:28.80 to 19:42:02.23, Dur: 814s	hhN (dB)	-67.14	-64.08	-65.55	-75.57	9.9
TimeLngth: 813.43s, TimeInt: 29ms (34.2pps)	vvN (dB)	-71.33	-67.82	-69.19	-79.21	10.0
TimeCor=-13.0s, DSPDif(mn,mx,min):29,28,295	hhL (dB)	-20.82	-7.03	-9.00	-12.41	45.6
PPS(min,max,std): 26,36,2.17	vvL (dB)	-59.00	-41.18	-45.50	-48.79	46.9
Prof: 548 to 28338, NumProf(t/r): 27790/10721	ppN (m/s)	-12.30	12.41	0.03	4.14	
ProcTime/Recs: 19:36:48-19:42:02/17069-27789	ppT (m/s)	-97.18	98.07	0.22	32.70	
MxACQtime: 33ms; DRate: 191.2KB/s; Flags: 0, 0, 0	hh/vv (dB)	-NaN	98.51	-NaN	79.17	-568
Pulse: 275ns, IFilt: 5.0MHz; ppPol: HH HV VV	vh/hh (dB)	-NaN	-33.36	-NaN	-44.44	-663
TxPol: HHVV, PRF: 20 10 20 10 kHz	hv/vv (dB)	-11.83	-4.98	-9.11	-13.18	39.2
Range: Delay 75m, Spacing 15m, Gates 100	hn_jmp (dB)	-2.08	1.99	0.17	-8.36	14.0
Ave. Pulses: 84, Rng/Prof Aspect@90m/s: 5.7	vn_jmp (dB)	-2.53	2.50	0.16	-8.33	14.1



IHOP 2002 (dual-antenna config, modes 1,3,4,7) Data (cal: 55.0,50.0)

W2002-05-30-19-28-49 - PPMAG4	Min	Max	Mean	Std	Varc%	
IRIG:1,UTC: 19:28:28.80 to 19:42:02.23, Dur: 814s	hhN (dB)	-67.14	-64.08	-65.55	-75.57	9.9
TimeLngth: 813.43s, TimeInt: 29ms (34.2pps)	vvN (dB)	-71.33	-67.82	-69.19	-79.21	10.0
TimeCor=-13.0s, DSPDif(mn,mx,min):29,28,295	hhL (dB)	-20.82	-7.03	-9.00	-12.41	45.6
PPS(min,max,std): 26,36,2.17	vvL (dB)	-59.00	-41.18	-45.50	-48.79	46.9
Prof: 548 to 28338, NumProf(t/r): 27790/10721	ppN (m/s)	-12.30	12.41	0.03	4.14	
ProcTime/Recs: 19:36:48-19:42:02/17069-27789	ppT (m/s)	-97.18	98.07	0.22	32.70	
MxACQtime: 33ms; DRate: 191.2KB/s; Flags: 0, 0, 0	hh/vv (dB)	-NaN	98.51	-NaN	79.17	-568
Pulse: 275ns, IFfilt: 5.0MHz; ppPol: HH HV VV	vh/hh (dB)	-NaN	-33.36	-NaN	-44.44	-663
TxPol: HHVV, PRF: 20 10 20 10 kHz	hv/vv (dB)	-11.83	-4.98	-9.11	-13.18	39.2
Range: Delay 75m, Spacing 15m, Gates 100	hnjmp (dB)	-2.08	1.99	0.17	-8.36	14.0
Ave. Pulses: 84, Rng/Prof Aspect@90m/s: 5.7	vnjmp (dB)	-2.53	2.50	0.16	-8.33	14.1