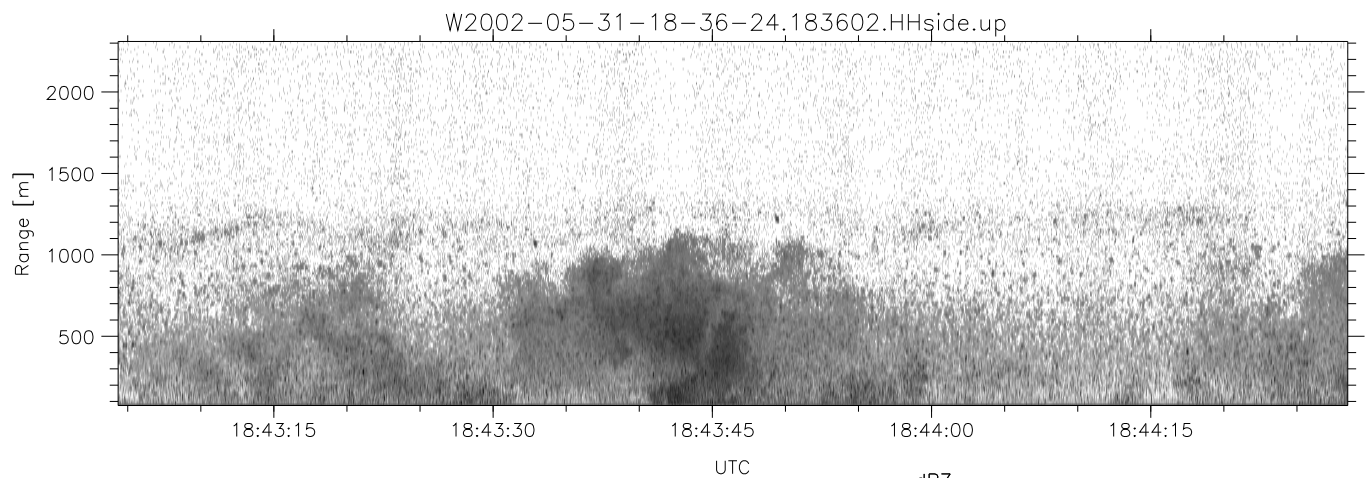
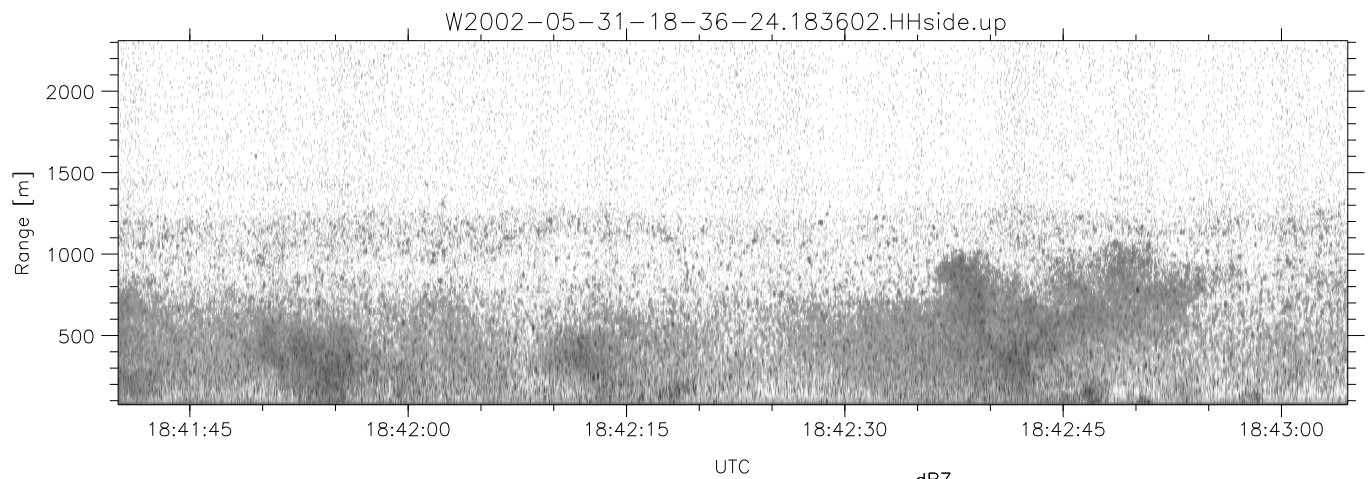
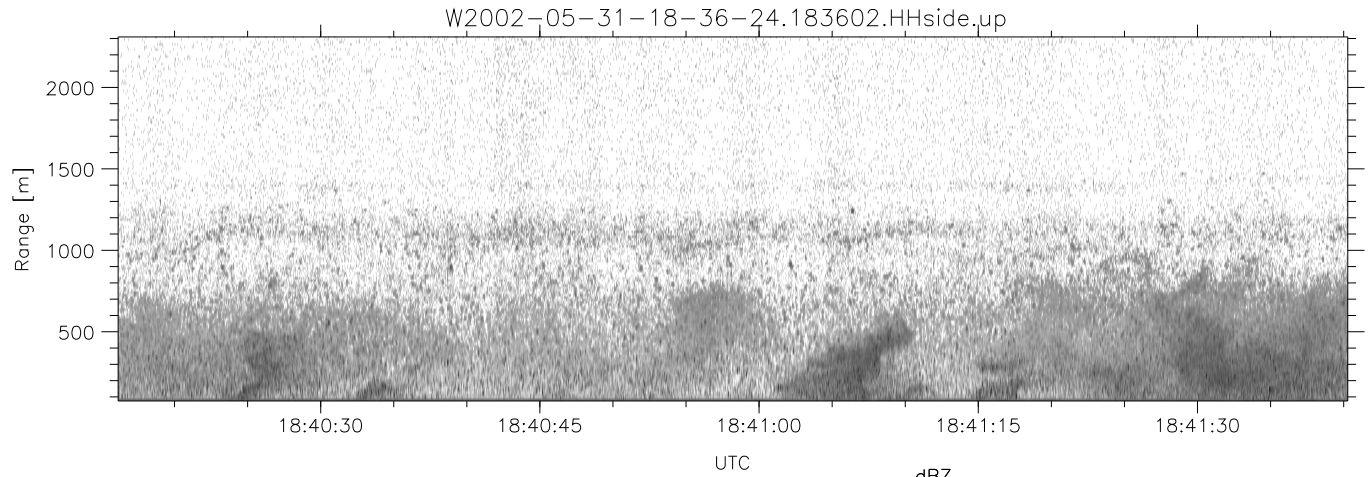


IHOP 2002 (dual-antenna config, modes 1,3,4,7) Data (cal: 49.0,50.0)

W2002-05-31-18-36-24 - SPPMAG
 IRIG:1,UTC: 18:36:02.67 to 20:00:07.58, Dur: 5045s
 TimeLngth: 5044.91s, TimeInt: 24ms (41.0pps)
 TimeCor=-13.0s, DSPDif(mn,mx,min):28,20,484
 PPS(min,max,std): 25,42,2.47
 Prof: 1363 to 208217, NumProf(t/r): 206854/30875
 ProcTime/Recs: 18:36:02-18:48:35/0-30874
 MxACQtime: 17ms; DRate: 98.2KB/s; Flags: 0, 0, 0
 Pulse: 275ns, IFfilt: 5.0MHz; ppPol: HH
 TxPol: H, PRF: 20 kHz
 Range: Delay 75m, Spacing 15m, Gates 150
 Ave. Pulses: 348, Rng/Prof Aspect@90m/s: 6.8

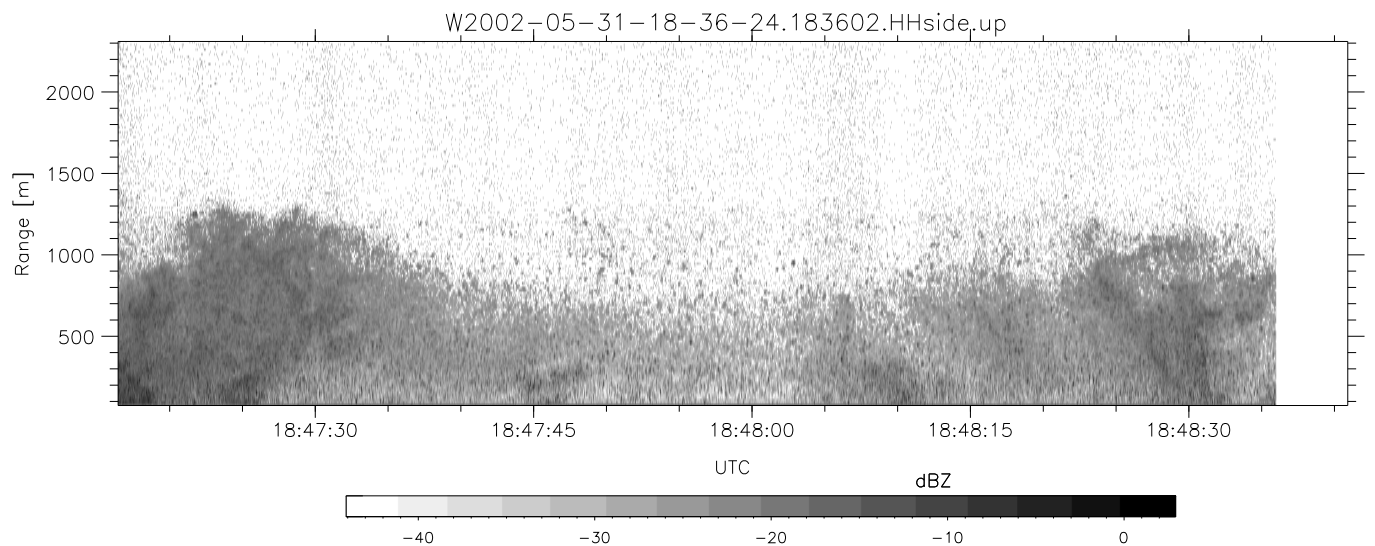
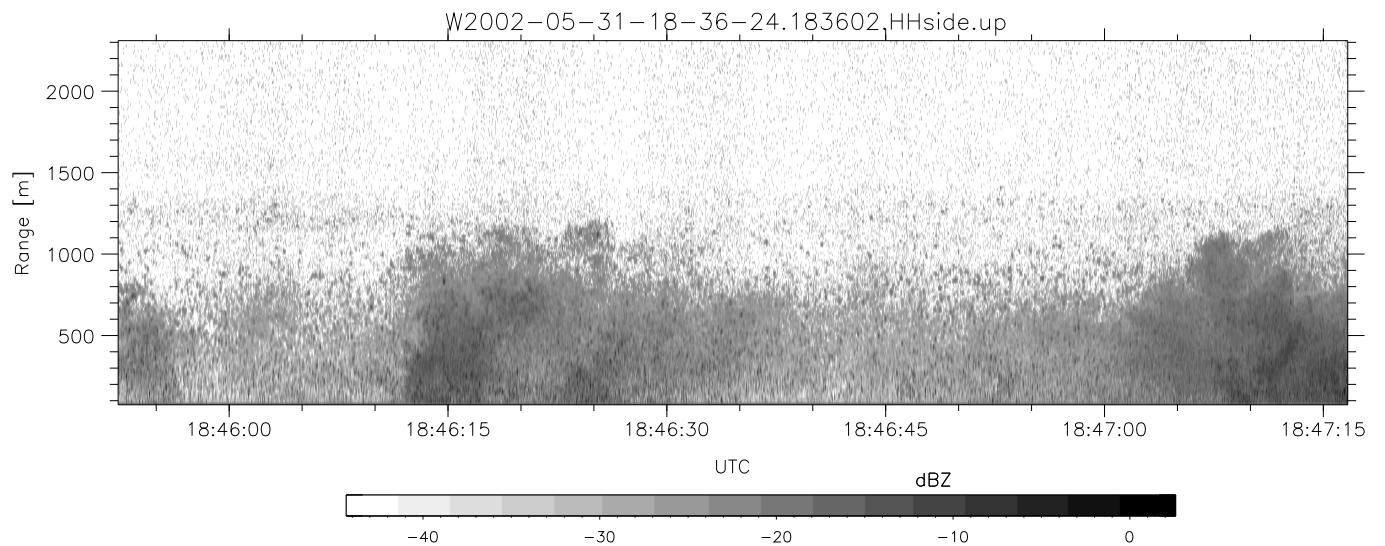
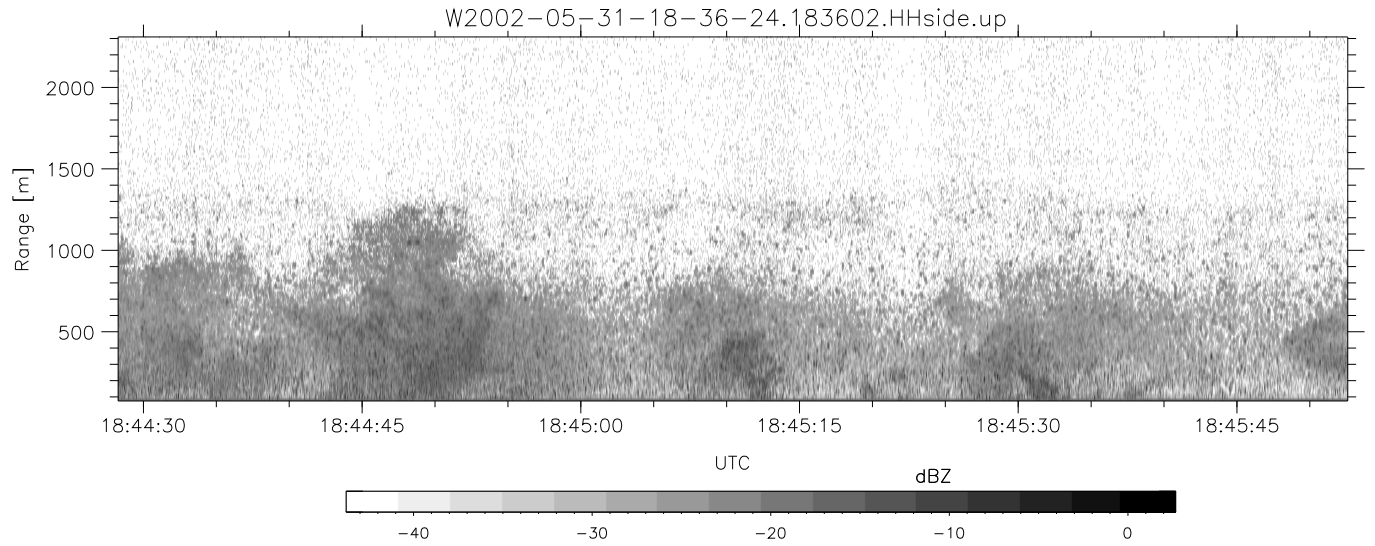
	Min	Max	Mean	Std	Varc%
hhN(dB)	-66.12	-64.33	-65.31	-78.30	5.0
vvN(dB)	-69.70	-67.80	-68.67	-81.68	5.0
hhL(dB)	-14.97	-8.53	-11.64	-18.54	20.4
vhL(dB)	-45.59	-36.19	-40.79	-46.37	27.7
ppN(m/s)	-15.80	15.79	-0.01	9.10	
ppT(m/s)	-0.02	0.03	-0.00	0.01	
vh/hh(dB)	-NaN	-33.78	-42.54	-40.88	146.
hnjmp(dB)	-0.95	1.43	0.14	-11.60	6.7
vnjmp(dB)	-1.09	1.27	0.12	-11.56	6.8



IHOP 2002 (dual-antenna config, modes 1,3,4,7) Data (cal: 49.0,50.0)

W2002-05-31-18-36-24 - SPPMAG
 IRIG:1,UTC: 18:36:02.67 to 20:00:07.58, Dur: 5045s
 TimeLngth: 5044.91s, TimeInt: 24ms (41.0pps)
 TimeCor=-13.0s, DSPDif(mn,mx,min):28,20,484
 PPS(min,max,std): 25,42,2.47
 Prof: 1363 to 208217, NumProf(t/r): 206854/30875
 ProcTime/Recs: 18:36:02-18:48:35/0-30874
 MxACQtime: 17ms; DRate: 98.2KB/s; Flags: 0, 0, 0
 Pulse: 275ns, IFfilt: 5.0MHz; ppPol: HH
 TxPol: H, PRF: 20 kHz
 Range: Delay 75m, Spacing 15m, Gates 150
 Ave. Pulses: 348, Rng/Prof Aspect@90m/s: 6.8

	Min	Max	Mean	Std	Varc%
hhN(dB)	-66.12	-64.33	-65.31	-78.30	5.0
vvN(dB)	-69.70	-67.80	-68.67	-81.68	5.0
hhL(dB)	-14.97	-8.53	-11.64	-18.54	20.4
vhL(dB)	-45.59	-36.19	-40.79	-46.37	27.7
ppN(m/s)	-15.80	15.79	-0.01	9.10	
ppT(m/s)	-0.02	0.03	-0.00	0.01	
vh/hh(dB)	-NaN	-33.78	-42.54	-40.88	146.
hnjmp(dB)	-0.95	1.43	0.14	-11.60	6.7
vnjmp(dB)	-1.09	1.27	0.12	-11.56	6.8



IHOP 2002 (dual-antenna config, modes 1,3,4,7) Data (cal: 49.0,50.0)

W2002-05-31-18-36-24 - SPPMAG
 IRIG:1,UTC: 18:36:02.67 to 20:00:07.58, Dur: 5045s
 TimeLngth: 5044.91s, TimeInt: 24ms (41.0pps)
 TimeCor=-13.0s, DSPDif(mn,mx,min):28,20,484
 PPS(min,max,std): 25,42,2.47
 Prof: 1363 to 208217, NumProf(t/r): 206854/30875
 ProcTime/Recs: 18:36:02-18:48:35/0-30874
 MxACQtime: 17ms; DRate: 98.2KB/s; Flags: 0, 0, 0
 Pulse: 275ns, IFfilt: 5.0MHz; ppPol: HH
 TxPol: H, PRF: 20 kHz
 Range: Delay 75m, Spacing 15m, Gates 150
 Ave. Pulses: 348, Rng/Prof Aspect@90m/s: 6.8

	Min	Max	Mean	Std	Varc%
hhN(dB)	-66.12	-64.33	-65.31	-78.30	5.0
vvN(dB)	-69.70	-67.80	-68.67	-81.68	5.0
hhL(dB)	-14.97	-8.53	-11.64	-18.54	20.4
vhL(dB)	-45.59	-36.19	-40.79	-46.37	27.7
ppN(m/s)	-15.80	15.79	-0.01	9.10	
ppT(m/s)	-0.02	0.03	-0.00	0.01	
vh/hh(dB)	-NaN	-33.78	-42.54	-40.88	146.
hnjmp(dB)	-0.95	1.43	0.14	-11.60	6.7
vnjmp(dB)	-1.09	1.27	0.12	-11.56	6.8