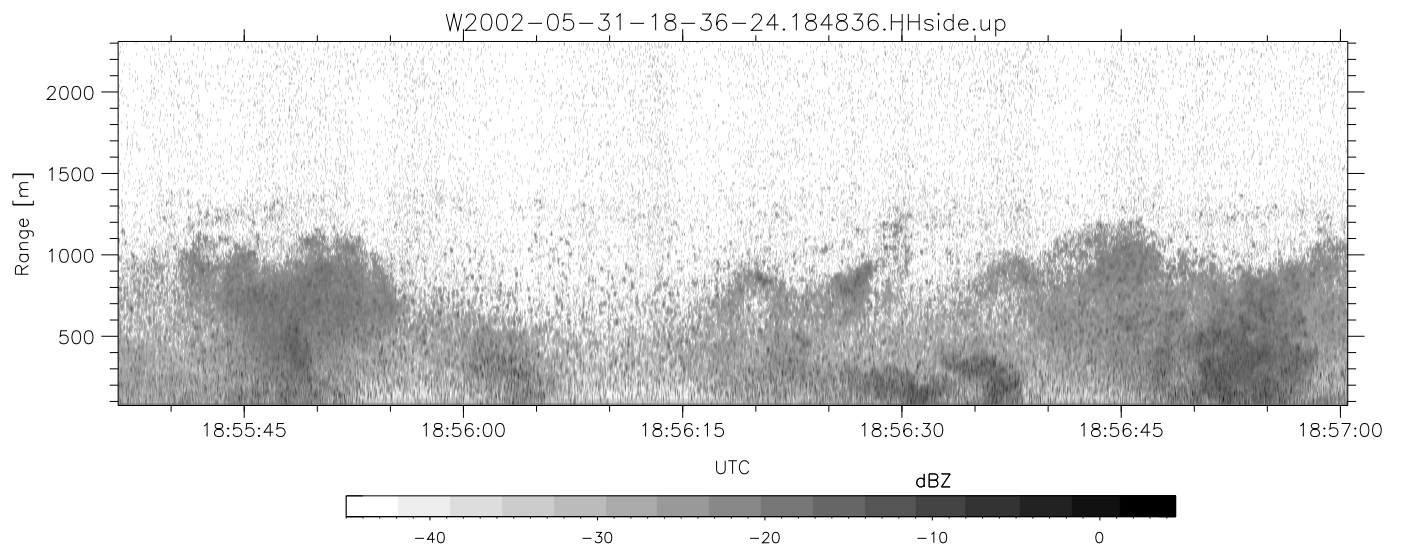
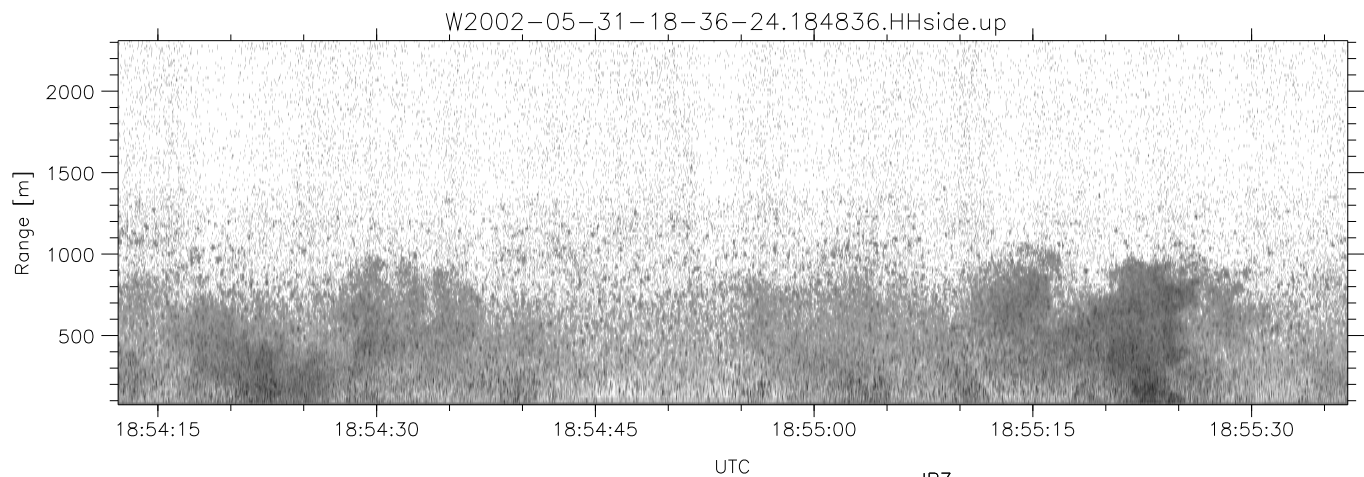
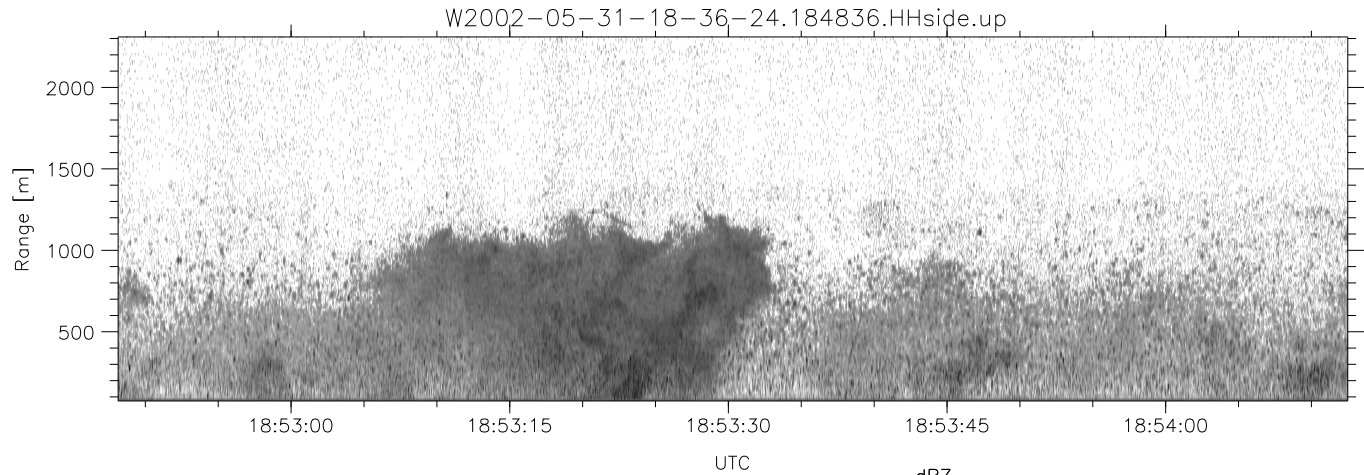


IHOP 2002 (dual-antenna config, modes 1,3,4,7) Data (cal: 49.0,50.0)

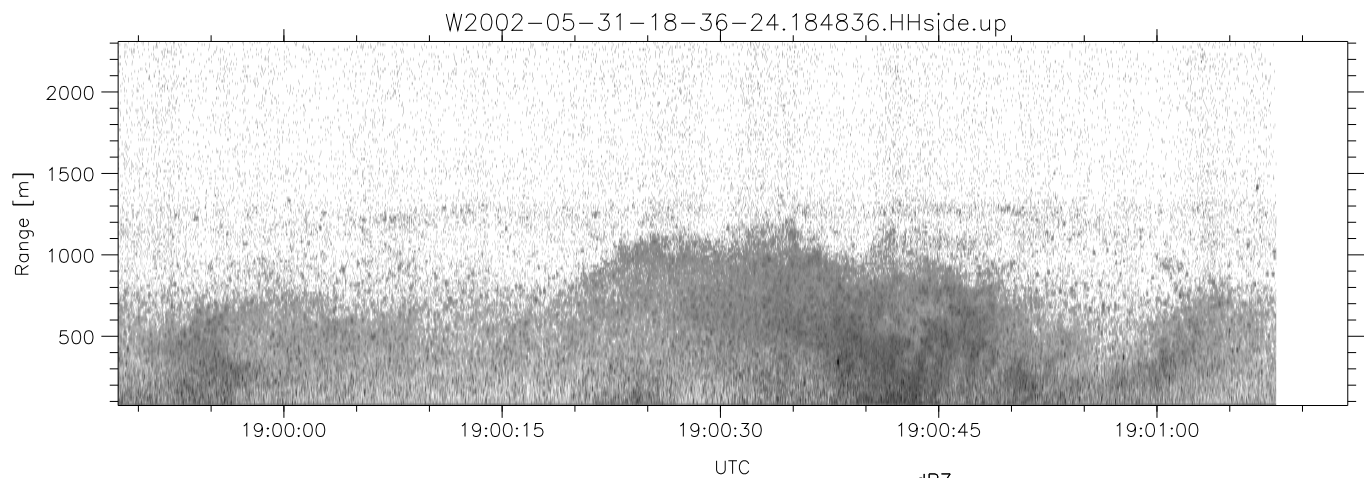
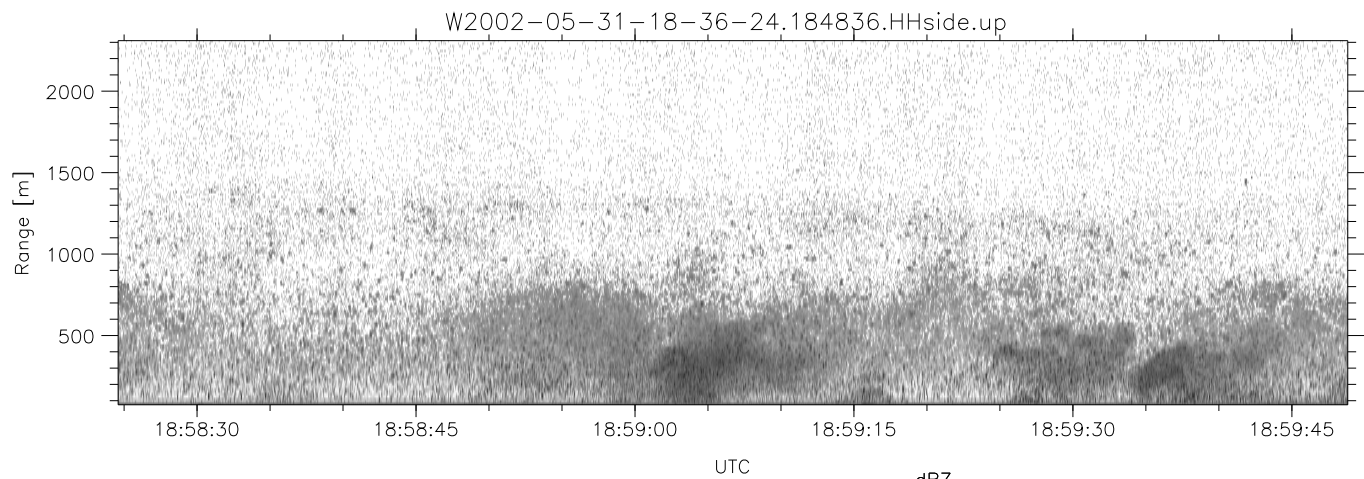
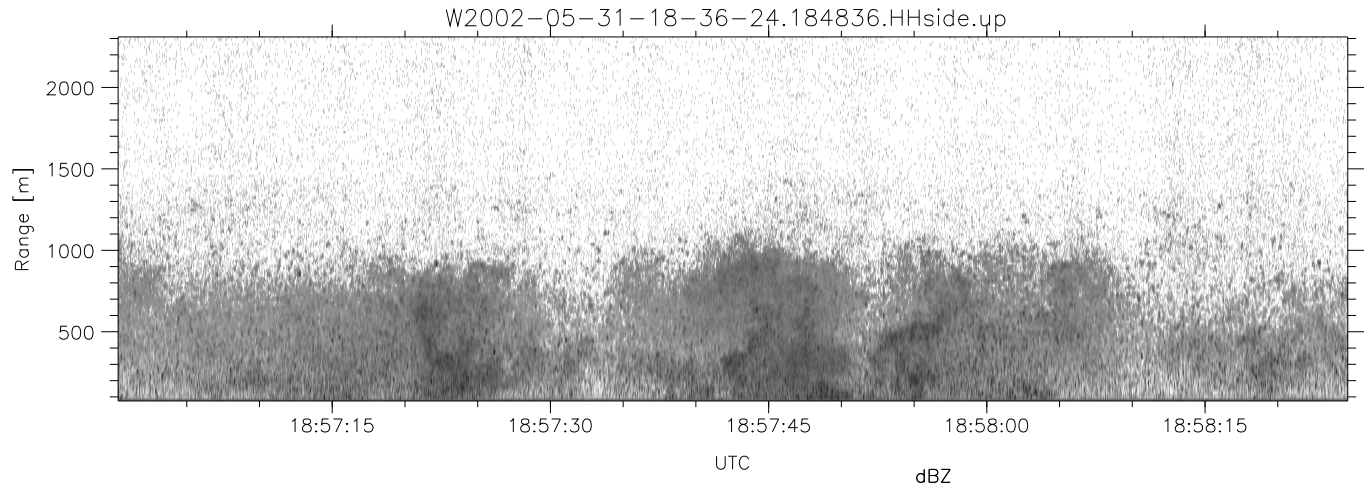
W2002-05-31-18-36-24 - SPPMAG	Min	Max	Mean	Std	Varc%	
IRIG:1,UTC: 18:36:02.67 to 20:00:07.58, Dur: 5045s	hhN(dB)	-66.31	-64.52	-65.41	-78.37	5.1
TimeLngth: 5044.91s, TimeInt: 24ms (41.0pps)	vvN(dB)	-69.90	-67.88	-68.79	-81.71	5.1
TimeCor=-13.0s, DSPDif(mn,mx,min):20,-979,3020	hhL(dB)	-15.94	-7.07	-12.72	-19.48	21.1
PPS(min,max,std): 0,159,5.52	vhL(dB)	-47.50	-35.30	-42.03	-47.06	31.4
Prof: 1363 to 208217, NumProf(t/r): 206854/30875	ppN(m/s)	-15.80	15.80	-0.05	9.06	
ProcTime/Recs: 18:48:36-19:01:08/30875-61749	ppT(m/s)	-0.03	0.03	-0.00	0.01	
MxACQtime: 17ms; DRate: 98.2KB/s; Flags: 0, 0, 0	vh/hh(dB)	-NaN	-33.90	-42.74	-40.94	151.
Pulse: 275ns, IFfilt: 5.0MHz; ppPol: HH	hnjmp(dB)	-1.16	1.00	-0.13	-11.89	6.7
TxPol: H, PRF: 20 kHz	vnjmp(dB)	-1.25	1.09	-0.10	-11.73	6.9
Range: Delay 75m, Spacing 15m, Gates 150						
Ave. Pulses: 348, Rng/Prof Aspect@90m/s: 6.8						



IHOP 2002 (dual-antenna config, modes 1,3,4,7) Data (cal: 49.0,50.0)

W2002-05-31-18-36-24 - SPPMAG
 IRIG:1,UTC: 18:36:02.67 to 20:00:07.58, Dur: 5045s
 TimeLngth: 5044.91s, TimeInt: 24ms (41.0pps)
 TimeCor=-13.0s, DSPDif(mn,mx,min):20,-979,3020
 PPS(min,max,std): 0,159,5.52
 Prof: 1363 to 208217, NumProf(t/r): 206854/30875
 ProcTime/Recs: 18:48:36-19:01:08/30875-61749
 MxACQtime: 17ms; DRate: 98.2KB/s; Flags: 0, 0, 0
 Pulse: 275ns, IFfilt: 5.0MHz; ppPol: HH
 TxPol: H, PRF: 20 kHz
 Range: Delay 75m, Spacing 15m, Gates 150
 Ave. Pulses: 348, Rng/Prof Aspect@90m/s: 6.8

	Min	Max	Mean	Std	Varc%
hhN(dB)	-66.31	-64.52	-65.41	-78.37	5.1
vvN(dB)	-69.90	-67.88	-68.79	-81.71	5.1
hhL(dB)	-15.94	-7.07	-12.72	-19.48	21.1
vhL(dB)	-47.50	-35.30	-42.03	-47.06	31.4
ppN(m/s)	-15.80	15.80	-0.05	9.06	
ppT(m/s)	-0.03	0.03	-0.00	0.01	
vh/hh(dB)	-NaN	-33.90	-42.74	-40.94	151.
hnjmp(dB)	-1.16	1.00	-0.13	-11.89	6.7
vnjmp(dB)	-1.25	1.09	-0.10	-11.73	6.9



IHOP 2002 (dual-antenna config, modes 1,3,4,7) Data (cal: 49.0,50.0)

W2002-05-31-18-36-24 - SPPMAG
 IRIG:1,UTC: 18:36:02.67 to 20:00:07.58, Dur: 5045s
 TimeLngth: 5044.91s, TimeInt: 24ms (41.0pps)
 TimeCor=-13.0s, DSPDif(mn,mx,min):20,-979,3020
 PPS(min,max,std): 0,159,5.52
 Prof: 1363 to 208217, NumProf(t/r): 206854/30875
 ProcTime/Recs: 18:48:36-19:01:08/30875-61749
 MxACQtime: 17ms; DRate: 98.2KB/s; Flags: 0, 0, 0
 Pulse: 275ns, IFfilt: 5.0MHz; ppPol: HH
 TxPol: H, PRF: 20 kHz
 Range: Delay 75m, Spacing 15m, Gates 150
 Ave. Pulses: 348, Rng/Prof Aspect@90m/s: 6.8

	Min	Max	Mean	Std	Varc%
hhN(dB)	-66.31	-64.52	-65.41	-78.37	5.1
vvN(dB)	-69.90	-67.88	-68.79	-81.71	5.1
hhL(dB)	-15.94	-7.07	-12.72	-19.48	21.1
vhL(dB)	-47.50	-35.30	-42.03	-47.06	31.4
ppN(m/s)	-15.80	15.80	-0.05	9.06	
ppT(m/s)	-0.03	0.03	-0.00	0.01	
vh/hh(dB)	-NaN	-33.90	-42.74	-40.94	151.
hnjmp(dB)	-1.16	1.00	-0.13	-11.89	6.7
vnjmp(dB)	-1.25	1.09	-0.10	-11.73	6.9